



2026

# Product Catalog

Volume 1



# Content

<b>LumiCloud Features</b>	17
LumiCloud	18
LumiCloud Key Features	19
Plug into the Cloud	20
LumiCloud Features: NVRs	22
LumiCloud Features: Access	24
LumiCloud Features: Network Switches	26
<b>LumiCenter Features</b>	28
<b>Network Cameras</b>	35
<b>Network Video Recorder</b>	56
<b>Kits</b>	61
<b>Access Control</b>	66
<b>Transmission</b>	70
<b>Analog</b>	75
<b>Accessories</b>	78
<b>LumiGuardian</b>	84



## Luminys Tools: Streamlined Support for Every Project Stage.

The Lumi Wiki gives you the tools to save time and boost productivity. Access the product manuals, guides, firmware updates and more to ensure you have what you need for smooth operations at every project stage.



Scan the QR code to go to the [Lumi Wiki](#).

---

## Product Selectors: Find and Compare.

Find exactly what you are looking for on our website easily and quickly by entering the first one (1) to (3) characters of the product name or SKU.

For customized search results or to compare products, use one of our product selectors to ensure you find the best product for your project.

- [Cameras Selector](#): Tailored for various security needs.
- [Recorders Selector](#): Enhance your security systems.
- [Accessories Selector](#): Complement your setup.
- [Software Selector](#): Control your system with powerful software.
- [LumiCloud Hardware Selector](#): Find direct-to-cloud hardware.



Scan the QR code to access search for a Luminys product.

---

## Learn Lumi: Empower. Innovate. Excel.

Master essential skills to enhance expertise and support professional growth with Learn Lumi, our targeted training and certification platform.



Scan the QR code to visit [Learn Lumi](#).

# Luminys Systems Corporation



*We deliver the most cost-competitive and advanced NDAA-compliant security solution portfolios in North America.*

## Rigorous Compliance



**Delivering Safe, Smart, and Sustainable Ecosystems**



### Mission

To empower communities and customers with advanced, high-quality technology solutions, we uphold integrity, enhance security, and optimize operations. Our smart connected solutions deliver sustainable, safer, and symbiotic ecosystems.



### Vision

To be the connected ecosystem of solutions and services for a sustainable, secure world.

# MVP Program

As an MVP partner, you are not just part of our network—you are at the heart of our mission to innovate, lead, and shape the future of our industry together.

Join us to gain access to dynamic co-marketing initiatives, cutting-edge technical support, priority resources, and significant pricing advantages.

## What Can We Do For You

- Unlock a pathway to growth through exclusive benefits and unique opportunities that drive profitability.
- Tailor your program to your achievements and commitment level with our four distinct tiers.
- Access robust resources, support, and tools that provide you everything you need to succeed and elevate your business.



**Partner**



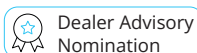
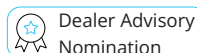
**Executive**



**Ambassador**



**Elite**

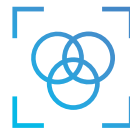
Core Requirements				
Sales and Technical Certification Requirements*	None	None	1 Sales Certification & 1 Technical Certification	2 Sales Certification & 2 Technical Certification
Core Benefits				
Over-the-Counter Exchange	✓	✓	✓	✓
Project Registration	✓	✓	✓	✓
Co-Marketing		✓	✓	✓
Online Certification Courses	✓	✓	✓	✓
Dealer Portal	✓	✓	✓	✓
Dedicated Account Manager	✓	✓	✓	✓
Dedicated Project Technical Support	-	Dedicated Project Technical Support	Dedicated Project Technical Support	Dedicated Project Technical Support
Technical Support Email Access	Email Response Within 24 Hours	Email Response Within 24 Hours	Email Response Within 12 Hours	Email Response Within 12 Hours
Technical Support Line Access	General Line	General Line	Priority Line	Priority Line
Partner Care Program	-	✓	✓	✓
Lead Generation	-	✓	✓	✓
Technical Consultant	-	✓	✓	✓
MVP Summit*	-	-	Eligible for 2 people**	Eligible for 2 people**
LumiCloud Access	✓	✓	✓	✓
Exclusive Nomination Opportunity	-	-	 Dealer Advisory Nomination	 Dealer Advisory Nomination

\*This requirement will be mandatory once the certification training program is launched.

\*\*Stay up-to-date with our demo purchase program. Our partners have the opportunity to purchase demo products at a discounted rate each year based on tier level.

# Our Technologies

## Low-light Technologies



### LumiLuxSmart



### Designed with 3 Flexible Modes.

LumiLuxSmart technology features dual-illumination to deliver full-color security in near-dark environments. It offers three versatile modes to suit any application: IR only, dusk-to-dawn white-light LEDs only, and motion-activated dual-illumination for full-color video. **Available on N5-L, N5-D, N3-L, N3-B fixed cameras and P5-D and P4-D PTZs.**

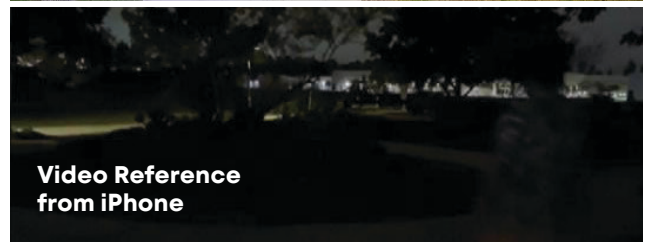
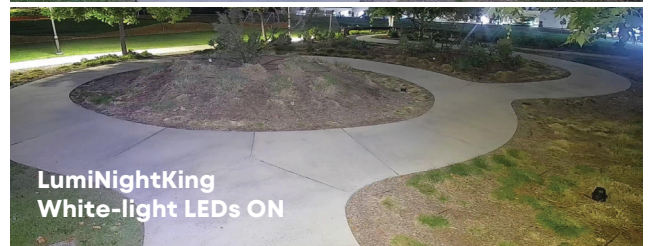
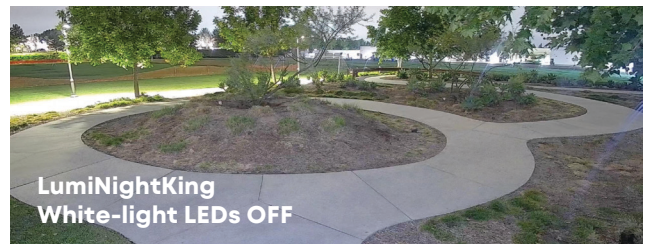


### LumiNightKing



### Made for Color. Specialized for Covertness or Deterrence.

LumiNightKing technology provides flexible and reliable full-color video in near-dark conditions. These cameras support two modes: covert monitoring with no LEDs or dusk-to-dawn white-light LEDs for deterrent monitoring. **Available on N4 fixed and P3-N PTZ cameras.**





## LumiLightBand



### Express Your Presence.

LumiLightBand technology features a vibrant front-facing light strip designed to ensure the camera's presence is clearly visible. The light strip can be activated based on a preset schedule or in response to event triggers. With eight attention-grabbing color options, the illuminating LEDs can be configured to remain steady, wave, or flash for a specified duration. **Available on N3-B fixed and K8-B kits.**



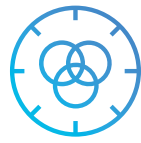
## LumiDeterrent



### Powerful Prevention.

LumiDeterrent technology integrates full-color low-light imaging with advanced proactive deterrence features, including customizable audio alerts, LumiDeterrent technology integrates full-color low-light imaging with advanced proactive deterrence including customizable audio alerts, flashing warning lights, and dual-illumination. It supports three operational modes—infrared, dusk-to-dawn white-light LEDs for continuous deterrent monitoring, and motion-activated lighting. Brightness levels are remotely adjustable to minimize light pollution and optimize visibility for different environments. **Available on N5-D, N3-D fixed and P5-D and P4-D PTZs.**





**LumiColor**



## Engineered for Continuous Color.

LumiColor technology features dusk-to-dawn white-light LEDs to provide active deterrence and ambient illumination, delivering full-color security in near-dark environments. Once lighting is increased, the white-light LEDs turn off. **Available on N5-C Series fixed cameras.**

## AI Technologies

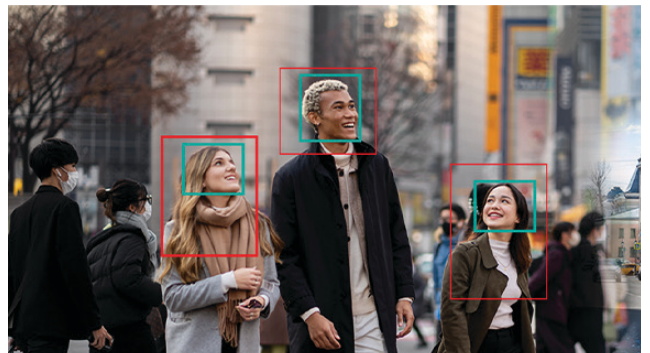


**LumiAnalytics**



## Powered by Intelligence.

LumiAnalytics encompasses Face Detection, People Counting, Queue Management, Smart Object Detection, and Heat Mapping. These analytics utilize detailed metadata and advanced AI algorithms to track key metrics, including people counting and behavioral analysis. These insights provide businesses with highly valuable information to improve and optimize operations.





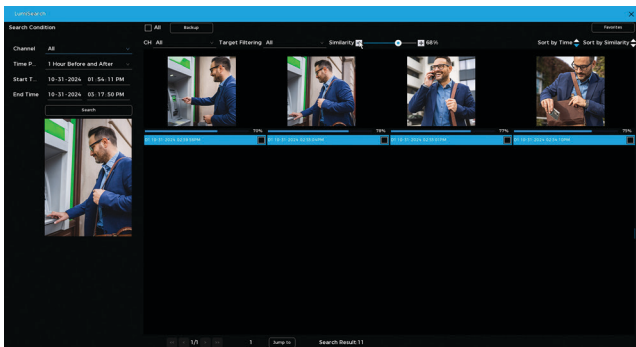
## LumiSearch



### Optimized to Find Things Fast.

LumiSearch technology lets you quickly find, track, and identify targets in security video using a reference image. The LumiSearch algorithm analyzes human body shape, clothing color, and other characteristics to accurately pinpoint where a target has appeared in video captured by any LumiSearch-enabled camera and NVR. **Availability on the P54-4DB25, N5-D\*, N5-C, P5-S cameras, and R5, R6 NVRs.**

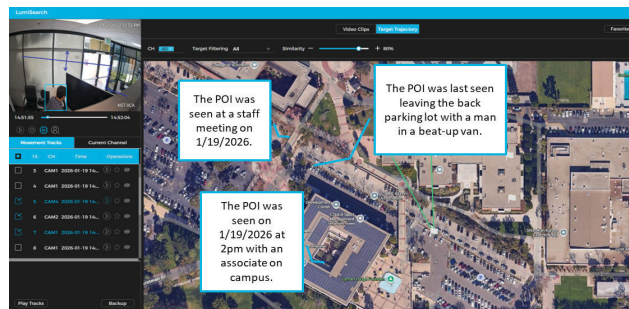
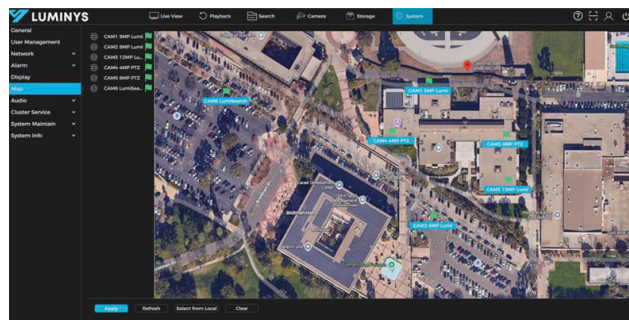
\*Does not include: NSP-8DA2



## LumiSearch+

### AI-driven. Finding Results Faster.

LumiSearch+ adds LumiTrajectory, which maps a person or vehicle's movement across multiple camera feeds for fast, real-time tracking. Upload a site map, place camera flags, and run a search using a reference image. Results appear chronologically on the map, clearly showing the subject's path. This improves situational awareness for live monitoring and forensic review. **Available on N5-L series cameras and R5, R6 NVRs.**



## Performance Technologies



### LumiPolarPro

#### Arctic Dependable.

LumiPolarPro technology ensures rugged all-weather performance. Depending on the product model, LumiPolarPro enables dependable performance in  $-40\text{ }^{\circ}\text{C}$  ( $-40\text{ }^{\circ}\text{F}$ ) or lower.

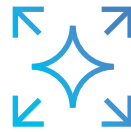
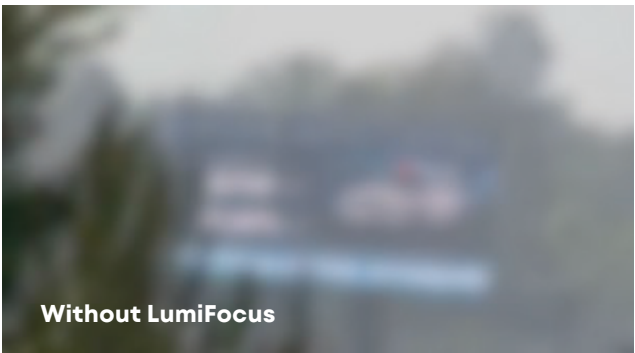


### LumiDesertPro

#### Built to Last.

LumiDesertPro technology ensures rugged all-weather performance. Depending on the product model, LumiDesertPro allows operation in temperatures  $60\text{ }^{\circ}\text{C}$  ( $140\text{ }^{\circ}\text{F}$ ) or higher.





## LumiFocus



### Precision Where It Matters.

LumiFocus technology delivers seamless, razor-sharp focus at every zoom level. Available on all Luminys PTZs, LumiFocus keeps targets in focus so operators never lose sight when zooming in or out of a scene. No delays, no distractions, no refocusing of the lens—just crystal-clear footage from start to finish.

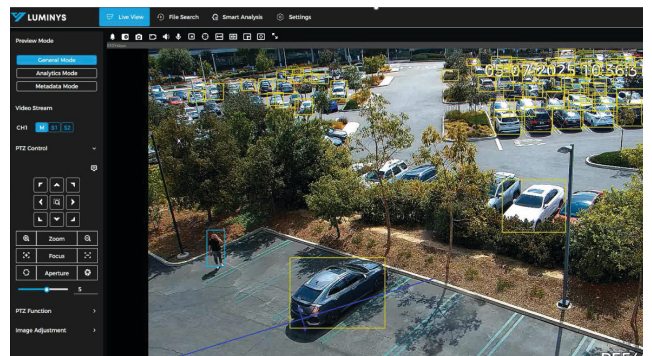


## LumiTracking



### Follow the Things that Matter.

LumiTracking technology enhances security and efficiency by automating the tracking of people and vehicles. It uses advanced AI algorithms to monitor and predict the direction and speed of moving targets, enabling quick response to potential issues for enhanced security and smooth operation. **Available on all Luminys PTZs.**



## Example of LumiPower Using Network Camera and NVR:



IP Camera With LumiPower

**LumiPower  
(Up to 3,000 Feet)**



NVR With LumiPower



# LumiPower



## Go the Distance.

Power over Ethernet technology enables up to 3,000 feet of power and data transmission via a single Ethernet cable. It eliminates the need for additional power sources or repeaters and ensures consistent connectivity and dependable power management throughout your security infrastructure.



N5-C Series



N5-L Series



# LumiPoE

## Extend Your Range. Powerful, Efficient, Long-distance.

Power over Ethernet (PoE) technology enables extended power and data transmission via a single Ethernet cable. Allows for distances of up to 820 feet, simplifying installations in larger or more complex environments by eliminating the need for additional power sources or repeaters. Ensures consistent connectivity and dependable power management throughout your security infrastructure.

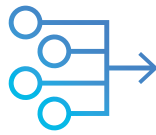
**Standard PoE**

Up to 328 ft.  
(100 m)

**LumiPoE**

Up to 820 ft.  
(250 m)

Bandwidth limited to 10 mbps per port



## LumiFlex

### More Coverage. Reduced Channels. Fewer Licenses.

Running low on channels? No problem. LumiFlex technology is available on select multi-sensor cameras for more coverage while reducing the number of channels and licenses. Multi-sensors with the LumiFlex capability feature multiple sensors that can be individually positioned to capture different areas of a scene. The footage from each sensor can then be combined to create one continuous stream for a higher return on investment. **Available on N9P-4RA2 and N9P-20RAV.**



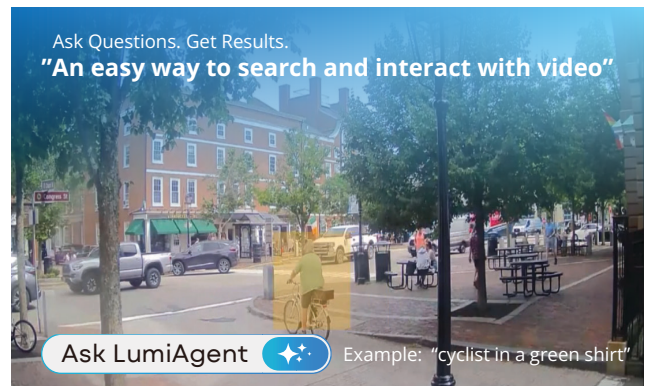
## LumiAgent

### Transform Security Video Into Answers

#### LumiAgent: VLM Intelligence Engine

LumiAgent is a powerful new technology that unlocks the Vision Language Model (VLM) capabilities within **LumiCloud** and **LumiCenter**.

LumiAgent is a query-based AI agent that you can ask questions in plain language with no special commands as if talking to a person.



#### Key Highlights:

- **Natural Language Search:** Instantly locate video evidence using conversational queries.
- **Custom AI Alerts:** Create personalized event triggers tailored to specific security needs.
- **Generative Summaries:** Automatically creates summary of video event.

#### Coming Soon to:



LumiCloud



LumiCenter

# Camera Naming Conventions

**N 5 D - 4 L A 2 C**

Technology	Series	Form Factor	Resolution	CORE Function	Generation	Lens	Cloud/Color
<b>N</b> Network	<b>5</b> LumiLuxSmart LumiColor LumiDeterrent	<b>B</b> Bullet	<b>4</b> 4MP	<b>C</b> LumiColor	<b>A</b> Gen. 1	<b>2</b> 2.8 mm	<b>C</b> Direct-to-Cloud
	<b>9</b> Pano LPR Fisheye	<b>T</b> Turret	<b>5</b> 5MP	<b>S</b> LumiSearch	<b>B</b> Gen. 2	<b>V</b> Vari-focal	<b>B</b> Black
	<b>4</b> LumiNightKing	<b>D</b> Dome	<b>6</b> 6MP	<b>D</b> LumiDeterrent		<b>3</b> 3.6 mm	
	<b>3</b> LumiLightBand	<b>P</b> Panoramic	<b>8</b> 8MP	<b>L</b> LumiLuxSmart		<b>1</b> 1.85 mm	
	<b>2</b> IR	<b>F</b> Fisheye	<b>12</b> 12MP	<b>R</b> IR		<b>L</b> Long-Range Vari-focal	
		<b>W</b> Wedge	<b>18</b> 18MP	<b>B</b> LumiLightBand			
		<b>L</b> LPR	<b>20</b> 20MP	<b>V</b> LumiNightKing			



# PTZ Naming Conventions

P 5 4 - 8 R A 25						
Technology	Tier/Series	Form Factor	Resolution	Function	Generation	Lens/Color
<b>P</b> PTZ	<b>2</b> Starter Series	<b>2</b> 2-in. PTZ	<b>8</b> 8MP	<b>S</b> LumiSearch	<b>A</b> Gen. 1	<b>25</b> 25x Optical Zoom
	<b>3</b> LumiNightKing	<b>4</b> 4-in. PTZ	<b>5</b> 5MP	<b>D</b> LumiDeterrent	<b>B</b> Gen. 2	<b>45</b> 45x Optical Zoom
	<b>4</b> Mainstream Series	<b>5</b> 5-in. PTZ	<b>4</b> 4MP	<b>R</b> IR		<b>32</b> 32x Optical Zoom
	<b>5</b> Mainstream Series	<b>C</b> In-ceiling PTZ		<b>N</b> LumiNightKing		<b>4</b> 4x Optical Zoom
				<b>T</b> True WDR		<b>16D</b> 16x Digital Zoom

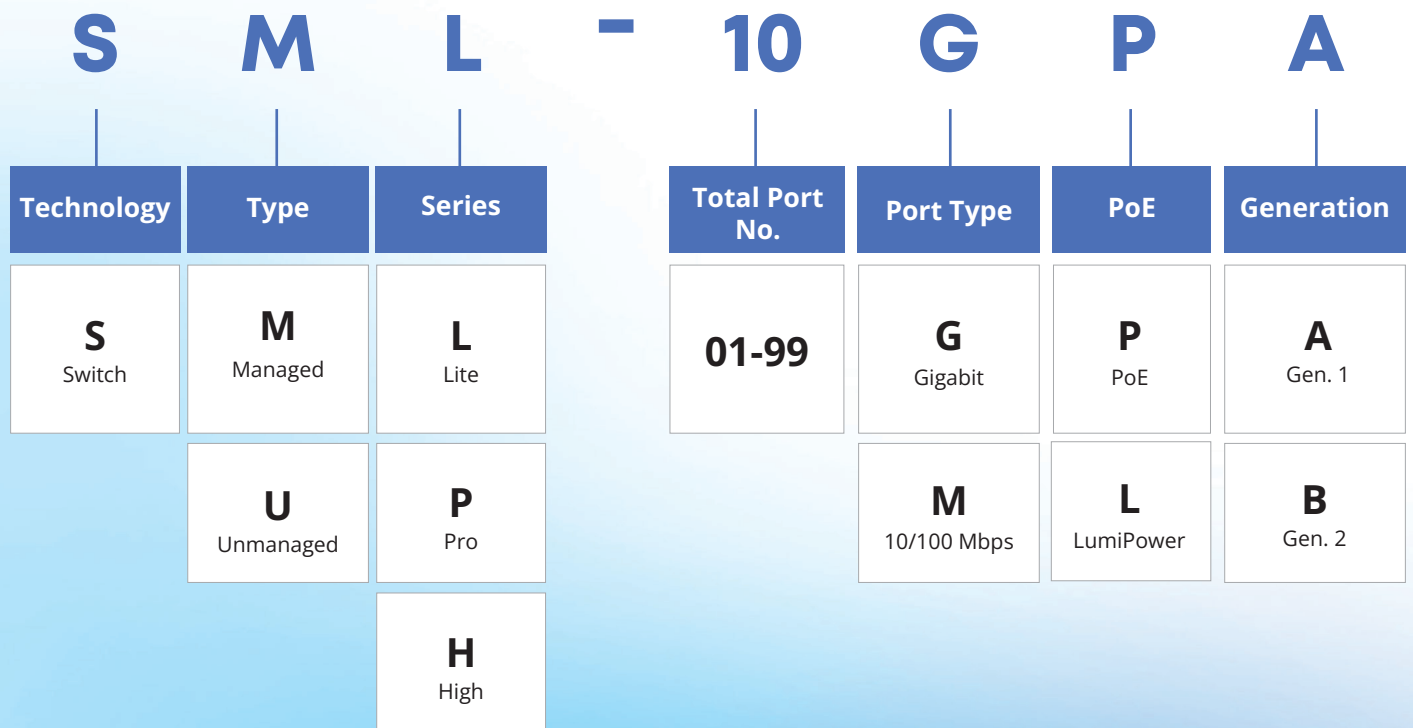


# NVR Naming Conventions

Technology	Series	HDD No.	Channel No.	Function	Generation	HDD Size
<b>R</b> NVR	<b>3</b> Starter	<b>1</b> 1 HDD	<b>4</b> 4CH	<b>P</b> PoE	<b>A</b> Gen. 1	<b>1</b> 1 TB
	<b>4</b> Mainstream	<b>2</b> 2 HDD	<b>8</b> 8CH	<b>N</b> Non-PoE/Dual NIC	<b>B</b> Gen. 2	<b>2</b> 2 TB
	<b>5</b> Mainstream	<b>4</b> 4 HDD	<b>16</b> 16CH			<b>4</b> 4 TB
	<b>6</b> Extreme	<b>8</b> 8 HDD	<b>24</b> 24CH			<b>8</b> 8 TB
		<b>S</b> 16 HDD	<b>32</b> 32CH			<b>T</b> 10 TB
		<b>T</b> 24 HDD	<b>64</b> 64CH			
			<b>X</b> 128CH			



# Switch Naming Conventions



# Access Control Naming Conventions

**C**

**2**

**G**

**A**

Technology	Door	Material Appearance	Generation
<b>C</b> Controller	<b>1</b> 1 Door	<b>P</b> Plastic	<b>A</b> Gen. 1
<b>E</b> Enclosure	<b>2</b> 2 Door	<b>M</b> Metal	<b>B</b> Gen. 2

<b>4</b> 4 Door	<b>N</b> Narrow
<b>F</b> Face	<b>W</b> Wide
	<b>4</b> 4.3-in.

**RD**

**1**

**M**

**G**

Technology	Generation	Control Type	Material Appearance
<b>RD</b> Reader	<b>1</b> Gen. 1	<b>B</b> Bluetooth	<b>P</b> Plastic
<b>ED</b> Enrollment	<b>2</b> Gen. 2	<b>P</b> Password	<b>M</b> Metal
		<b>C</b> Card	<b>N</b> Narrow
			<b>W</b> Wide
			<b>U</b> USB



01

# LumiCloud Features



# LumiCloud

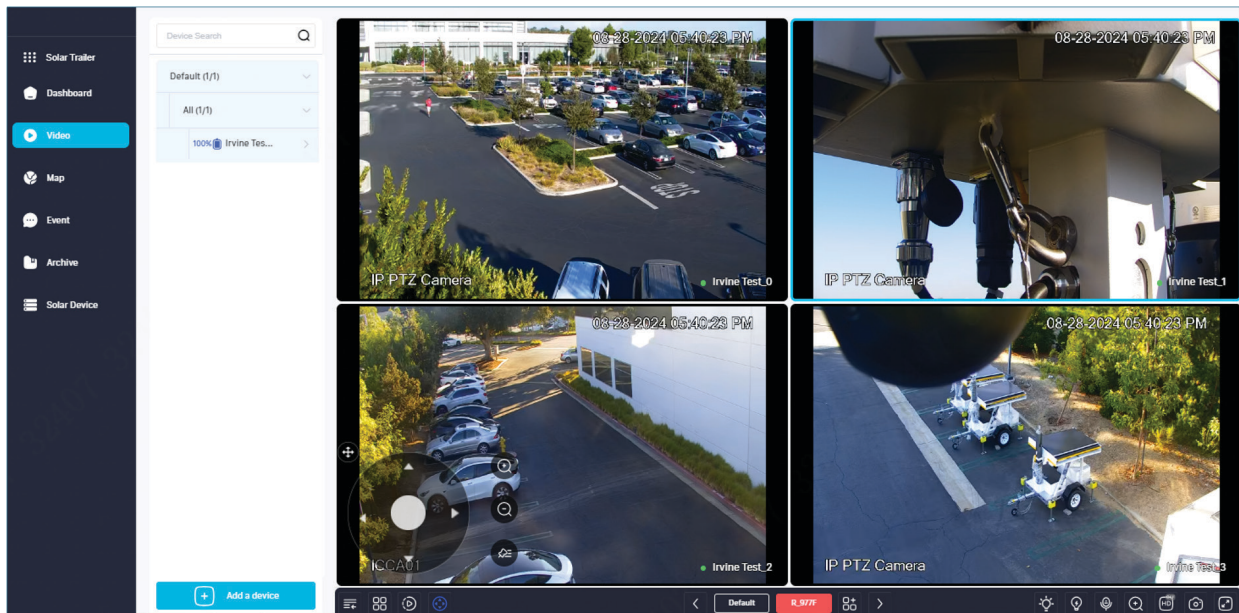
## The Next-Generation of Video Surveillance

Revolutionize the way you monitor and manage your security system.



**LumiCloud is a Video Surveillance as a Service (VSaaS) solution** powered by a variety of algorithms that provides the ability to search, receive alerts and analyze patterns of detections across locations and historical data. Data is centrally stored in the cloud with easy access from web browsers and smart phone apps.

LumiCloud supports high-resolution video streams, ensures clarity, and provides real-time access from anywhere. This platform provides advanced analytics, customizable alerts, effective bandwidth management, and simple subscription-based scalability.



View and search live or recorded video through a web browser or smart phone.

- Luminy's Network Cameras
- Luminy's NVRs
- Luminy's Network Switches
- Luminy's Access Control
- Off-Grid Solutions (Includes LumiGuardian and LumiWatch)

# LumiCloud Key Features



## Dashboard Management

- Access cameras and other devices
- No port forwarding
- Connect anywhere, anytime, with any device



## Optimize Your IT Costs

- No need to purchase an expensive server or hire maintenance staff
- Maximize time and resources while minimizing IT costs



## Quickly Connect Devices

- Add a device manually or via QR Code
- Supports select camera and NVRs, LumiGuardian trailer, PoE switches, and access control



## Trusted

- Video data is stored and managed in the cloud
- Reliable protection against threats from both inside and outside



## Easy Configuration

- Remotely login and configure devices
- No server hardware to install, manage, or configure

\*Web browser requires HTML-5 support, or use Smart Phone App.

 **LumiCloud Cameras**

**Connect  
Capture  
View**



## Plug Into the Cloud

Direct-to-cloud connection, storage, video playback, events and alerts for one-stop cloud management for your video security.

### What can I do with LumiCloud?

- Secure storage of video and data in the cloud to eliminate the need for a DVR/NVR
- Remote connection from anywhere\*
- View live video
- Playback video stored in cloud or on camera
- Remote device configuration
- Map camera locations
- Device status, notifications and alerts
- AI-based smart search, iMD, and VCA event data
- Archive video (up to 30 GB per end-user account)
- Share video and events
- Dashboard overview, reports, and more
- OTA firmware updates
- One-year trial subscription included with LumiCloud Camera (LCL-HDV-UC)

# CLOUD VSaaS



\* Requires internet connection and browser that supports HTML-5 or the LumiCloud mobile app.

## LumiCloud Camera Features

- ✓ 4MP Resolution
- ✓ Smart Encoding
- ✓ WDR
- ✓ IR Illumination (< 98 ft.)
- ✓ White-Light LED Illumination (< 98 ft.)
- ✓ Built-In Microphone
- ✓ IP67
- ✓ MicroSD Card (256 GB) Included
- ✓ LumiPower & PoE
- ✓ Intelligent Motion Detection (iMD)
- ✓ Video Content Analytics+ (VCA+)
- ✓ Includes 1-Year LumiCloud Unity Trial Subscription License (LCL-HDV-UC)



**N5B-4LA2C**



**N5T-4LA2C**



**N5D-4LAVC**

Adding a 24\*7 LumiCloud storage subscription license provides unlimited cloud storage for one direct-to-cloud Luminys camera for one year with rolling playback of stored video in LumiCloud. The maximum number of days for stored video in the cloud is specified by each cloud storage SKU. An active HD Video Unity camera subscription license is required to use 24\*7 storage.

SKU	Description
LCL-30CLOUD-UC	LumiCloud 24*7 Storage, 30 Day Rolling Playback for One LumiCloud Direct-to-Cloud Camera (Annual Subscription Plan)
LCL-60CLOUD-UC	LumiCloud 24*7 Storage, 60 Day Rolling Playback for One LumiCloud Direct-to-Cloud Camera (Annual Subscription Plan)
LCL-90CLOUD-UC	LumiCloud 24*7 Storage, 90 Day Rolling Playback for One LumiCloud Direct-to-Cloud Camera (Annual Subscription Plan)
LCL-1800CLOUD-UC	LumiCloud 24*7 Storage, 180 Day Rolling Playback for One LumiCloud Direct-to-Cloud Camera (Annual Subscription Plan)

# LumiCloud Features: NVRs

LUMICLOUD

LUMICENTER

NETWORK CAMERA

NETWORK VIDEO  
RECORDER

KITS



## LumiCloud Lite

- LumiCloud Lite is included with the purchase of select models of Luminy NVRs, access control products, and network switches
- Upgrade to a core subscription to get the full LumiCloud experience with additional features



	Feature	LumiCloud Lite	LumiCloud Unity
<b>License &amp; Subscription</b>	SKU	Included With Hardware	LCL-HDV-U
	Subscription Length	Perpetual	1 Year
	Compatible NVR platform	R3 & R5	R3 & R5
<b>General Function</b>	Secure Remote Connection	Y	Y
	Device Registration via QR Code	Y	Y
	Live View	Y*	Y
	Playback From Local Storage	Y*	Y
	Device Configuration	Y	Y
<b>Interactive Management &amp; Monitoring</b>	Device & Site Group Management	Y	Y
	Channel Configuration	Y	Y
	Mapping (No GPS)	Y	Y
	PTZ Control	Y	Y
<b>Cloud Storage</b>	Event Cloud Storage (Rolling Playback)	1 Day	30 Days
	Permanent Archive (Max. 30 GB)	-	Y
<b>Event &amp; Alert</b>	Event Record on Local Storage	Y	Y
	Intelligent Motion Detection (iMD) Event	-	Y
	Video Content Analysis (VCA) Event	-	Y
	System Alert	Y	Y
	Event Alert	Y	Y
<b>User Function</b>	User Control	Y	Y
	Video/Event Sharing	-	Y
	SSO (Single Sign-On)	Y	Y
	Audit Logs for Sign-In	Y	Y
<b>System Function</b>	Device Online Status	Y	Y
	Remote Firmware Upgrade	Y	Y
	Health Alerts	-	Y
	Comprehensive Reports	-	Y

\*Maximum of five (5) minutes.

ACCESS CONTROL

TRANSMISSION

ANALOG

ACCESSORIES

LUMIGUARDIAN

# LumiCloud Features: Access Control

LUMICLOUD

LUMICENTER

NETWORK CAMERA

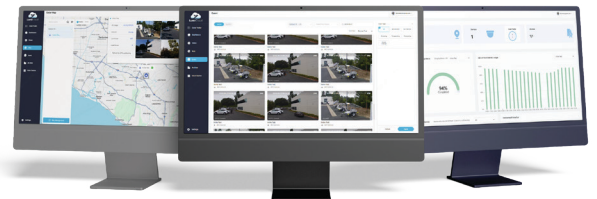
NETWORK VIDEO  
RECORDER

KITS



## Simplifying Access Control With LumiCloud

- Manage One (1) Door
- Manage Credential & User Permissions
- Door Management
  - ✓ Configure Users & Door Groups
  - ✓ Remote Monitoring and Management
  - ✓ Simplified Configuration Processes
  - ✓ Real-Time Network Health Monitoring
- Scalable and Flexible Deployment





ACCESS CONTROL

TRANSMISSION

ANALOG

ACCESSORIES

LUMIGUARDIAN

	Feature	LumiCloud Lite	LumiCloud Access
<b>License &amp; Subscription</b>	SKU	Included With Hardware	LCL-ACD
	Subscription Length	Perpetual	1 Year
<b>General</b>	Secure Remote Connection	Y	Y
	Device Online Status	Y	Y
	Remote Firmware Upgrade	Y	Y
<b>Access Schedule</b>	User & Group Management	Y	Y
	Access Rules Configuration	-	Y
	Weekly Schedule	-	Y
	Exception Schedule	-	Y
	User Information Extraction	Y	Y
	Door Configuration	-	Y
<b>Advanced Functions</b>	Remote Lock/Unlock	-	Y
	First-Person Unlock	-	Y
	Interlock*	-	Y
	Anti-Passback*	-	Y
<b>Video Access Control</b>	NVR Channel Linkage	-	Y
	Linked Camera Live View	-	Y
	Event Search	-	Y
	Event Retrieval	-	Y
	Comprehensive Reports (Save & Export)	Y	Y

\*Coming Soon

# LumiCloud Features: Network Switches

LUMICLOUD

LUMICENTER

NETWORK CAMERA

NETWORK VIDEO  
RECORDER

KITS



## Simplifying Network Management With LumiCloud

- Centralized Network Control
- Remote Monitoring and Management
- Simplified Configuration Processes
- Real-Time Network Health Monitoring
- Scalable and Flexible Deployment
- Remote Access With Secure Connectivity
- Compatible with Luminiys SML-6GPA, SML-10GPA, SML-20GPA, and SML-28GPA



ACCESS CONTROL

TRANSMISSION

ANALOG

ACCESSORIES

LUMIGUARDIAN

Features		LumiCloud Lite	Network Switch
<b>License &amp; Subscription</b>	SKU	Included With Hardware	LCL-SW100
	Subscription Length	Perpetual	1 Year
<b>General Function</b>	Secure Remote Connection	Y	Y
	Device Registration via QR	Y	Y
	Remote Firmware Upgrade	Y	Y
<b>Switch Management</b>	Switch Panel View	-	Y
	Switch Setting and Status	-	Y
	Switch Reboot	-	Y
	Congestion Threshold	-	Y
	Comprehensive Report	-	Y
	VLAN	-	Y
<b>Port Management</b>	Port Status	-	Y
	Port Setting	-	Y
	Port Control	-	Y
	PoE Watchdog	-	Y
	Port Alert	-	Y
<b>User Function</b>	SSO (Single Sign-On)	Y	Y
	Audit Logs for Sign-In	Y	Y
	Device & Site Group Management	Y	Y
	User Control	Y	Y



**LumiCenter**

02

# **LumiCenter Features**

# LumiCenter VMS

Unifying Security, Amplifying Intelligence.



### Unified Control Interface

Seamless integration and management of multiple devices from one interface.



### Advanced Analytics

On-board camera analytics and AI-based analytics detection.



### Real-time Monitoring

Timely alerts with automated event responses.

## Overview

LumiCenter is a state-of-the-art video management software (VMS) designed to seamlessly integrate surveillance cameras, AI-based analytics, and robust server software with web clients and mobile applications. The software enables you to take a proactive stance on security, predicting and alerting to potential incidents before they escalate. Dynamic map navigation and response systems let you quickly access video feed and automate responses. LumiCenter eliminates the common frustrations of most video management systems and provides a streamlined, intelligent solution to video monitoring and management.

# AI-Powered Analytics

LUMICLOUD

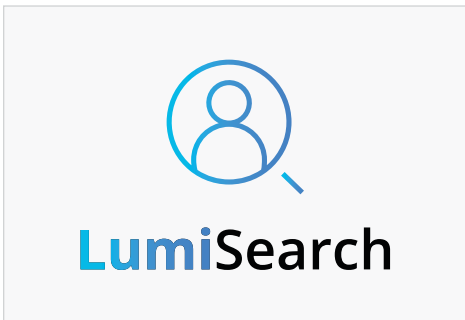
LUMICENTER



## Behavior Analytics Man Down Detected

- The LumiCenter AI Tracker Channel (LCE-AIT) is AI solution to integrate seamlessly with the LumiCenter Plus/Max platform, providing advanced AI-driven features to enhance video surveillance capabilities

NETWORK CAMERA



## LumiSearch VMS Tag and Track People

- AI analytics extracts human appearance features and stores them in a database
- Select a person in a video frame or upload a photo to quickly find similar individuals within security video from multiple cameras

NETWORK VIDEO  
RECORDER



## Real-time Analytics Advanced Motion Detection

- AI analytics extracts human appearance features and stores them
- Supports embedded camera analytics for important scene metadata and information
- Supports ONVIF profiles M and T
- Reduces false events and alerts with state-of-the-art algorithms

KITS



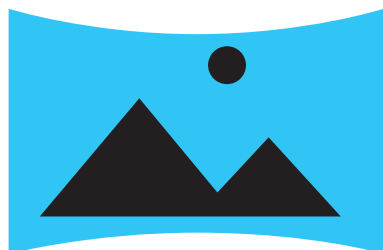
## Web, Desktop, and Mobile Clients

- Access LumiCenter from any device.
- Easily change video viewing and analytic settings and monitor video feeds from anywhere.



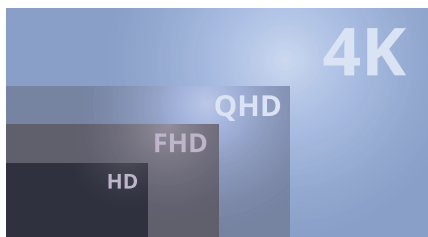
## PanoMerge™

- Seamlessly combine feeds from up to three (3) cameras to create a panoramic view.
- View live or playback panoramic video
- Export panoramic footage as standard .avi or .mkv files.
- Select and zoom into any part of the merged image.



## Image Dewarping

- Dewarp and correct images without any additional burden on the client CPU.



## AutoStream™

- Automatically chooses a camera stream that matches the client's screen resolution.
- Saves network bandwidth and client CPU resources using adaptive video streaming.

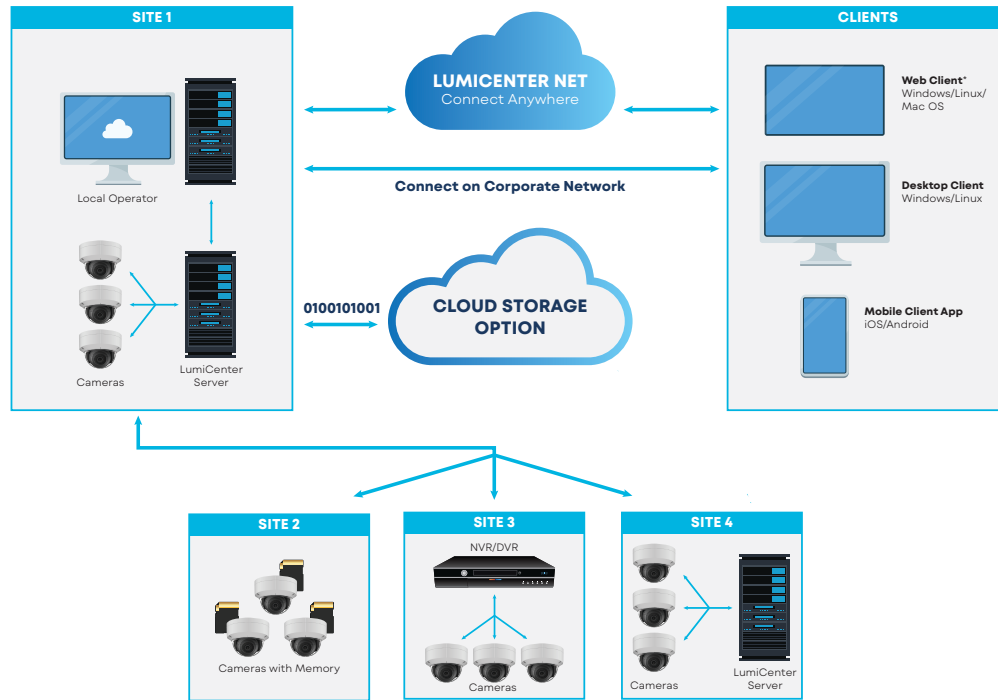


## LumiCenter Net

- Provides an intuitive, user-friendly web client without the need for port forwarding or an open network port.
- View live or recorded video remotely from any HTML 5 supported browser.

# LumiCenter System Diagram

LumiCenter is designed to be an all-in-one integration and management hub for your surveillance and access control devices. It allows you to store data at the edge, locally, or in a centralized server. Access your systems and information no matter where you are or what device you are on with LumiCenter Net and our various clients.



## Key Features

- Scalable to suit any type and size of application
- ONVIF support for compatibility with thousands of third-party IP cameras and devices
- Advanced AI-based video analytics and embedded camera analytics
- LumiSearch enables quick location of objects and individuals in recorded footage
- One-time license fee with no annual maintenance

# LumiCenter Feature Matrix

There are three variants of LumiCenter: Basic, Plus and Max, choose the one that fits your needs. Each license enables video capture, display, record, transmit and playback of one video channel from an IP camera or IP

device. Additional functionality includes input/output, audio and PTZ support. LumiCenter VMS supports ONVIF profiles G, M, S and T for maximum IP camera and device compatibility. The software license has no annual maintenance fee.

Features	LumiCenter Basic	LumiCenter Plus	LumiCenter Max
SKU	LCE-BASV	LCE-PLSV	LCE-MAXV
Max. Number of Distributed Servers	30	30	Unlimited
Max. Number of Cameras	Unlimited	Unlimited	Unlimited
Real-Time Analytics (Object Tracker)	Y	Y	Y
Edge Analytics (Camera Metadata)	Y	Y	Y
Edge Storage (Playback Only)	Y	Y	Y
AutoStream™ Bandwidth Management	Y	Y	Y
Interactive 3D Map	Y	Y	Y
Web Client	Y	Y	Y
Timeslice Search (Search by Time Intervals)	Y	Y	Y
Privacy Masking	Y	Y	Y
Macros (Event-Response Scenarios)	Y	Y	Y
ONVIF Profiles G, S, T, M	Y	Y	Y
Video Bookmarking (Searchable Text Comments)	Y	Y	Y
PanoMerge™	Y	Y	Y
LumiCenter Net (Cloud Service)	-	Y	Y
Reports	-	Y	Y
Cross-System Client	-	Y	Y
Videowall	-	Y	Y
LumiSearch VMS	-	-	Y
Storage Replication	-	-	Y
Failover	-	-	Y
LDAP Service	-	-	Y

ACCESS CONTROL

TRANSMISSION

ANALOG

ACCESSORIES

LUMIGUARDIAN

## LumiCenter Add-on Modules (Per Channel License)

Add more power to your system with LumiCenter add-on modules.\*

Features	SKU	LumiCenter Basic	LumiCenter Plus	LumiCenter Max
LumiCenter AI Tracker	LCE-AIT	-	Y	Y**
LumiCenter Face Recognition	LCE-FR	-	Y	Y
LumiCenter Face Recognition - 10 Pack	LCE-FR10	-	Y	Y
LumiCenter LPR	LCE-LPR	-	Y	Y
LumiCenter LPR Search	LCE-LPRS	-	Y	Y
LumiCenter PPE	LCE-PPE	-	Y	Y

\*Add-on video modules require the purchase of a LumiCenter Basic, Plus or Max video license.  
\*\*Included with LumiCenter Max.

03

# Network Cameras



# Low-light Technology Feature Matrix

Luminys offers a comprehensive range of low-light camera technologies, delivering full-color performance in near-dark conditions. Each camera series is tailored with distinct features to enhance visibility and efficiency, providing flexible solutions for a wide range of security applications. For added flexibility, the brightness intensity of Luminys cameras with white-light LEDs can be remotely adjusted to minimize light pollution and optimize visibility.

Camera Technology	Technical Description	IR Mode	White-light LED Mode	Dual-illumination: IR and White-light LEDs	Unique Features
<b>LumiColor: N5-C Mainstream Series</b>	Cameras with LumiColor technology feature a large aperture lens to capture more available light and integrated dusk-to-dawn white-light LEDs for full-color video down to 0.0005 lux at F1.0.		●		LumiPower for extended distance
<b>LumiDeterrent: N5-D Mainstream Series</b>	Cameras with LumiDeterrent technology feature a large aperture lens to capture more available light and flashing deterrent lights that work in tandem with dual-illumination for full-color video down to 0.001 - 0.002 lux at F1.0.	●	●	●	Flashing lights and an audio alarm
<b>LumiLuxSmart: N5-L Mainstream Series</b> <b>N3-L Starter Series*</b>	Cameras with LumiLuxSmart technology feature dual-illumination for full-color video down to 0.0005 to 0.0008 lux (Mainstream Series) and 0.005 to 0.007 lux (Starter Series).	●	●	●	LumiPower for extended distance
<b>LumiNightKing: N4 Mainstream Series</b>	Cameras with LumiNightKing technology feature a powerful AI-ISP chipset, enhanced pixel size 2.9µm, and a large F1.0 aperture lens to capture more available light for full-color video down to 0.0003 lux at F1.0.		●		AI-ISP for covert mode
<b>LumiLightBand: N3-B Starter Series</b>	Cameras with the colorful proactive LumiLightBand technology video 0.008 lux at F1.6.	●	●	●	Colorful band of deterrent LEDs

\*N3-L LumiPower not included

LUMICLOUD

LUMICENTER

NETWORK CAMERA

NETWORK VIDEO RECORDER

KITS



**N2D-8RB2**



**N2B-8RB2**

Series	N2 Starter Series	
<b>Image Sensor</b>	1/2.7-in. CMOS	1/2.7-in. CMOS
<b>Max. Resolution</b>	8MP (3840 x 2160)	8MP (3840 x 2160)
<b>Focal Length</b>	2.8 mm	2.8 mm
<b>Min. Illumination</b>	Color: 0.18 Lux B/W: < 0.005 Lux	Color: 0.18 Lux B/W: < 0.005 Lux
<b>Max. IR Distance</b>	98 ft (30 m)	98 ft (30 m)
<b>Max. White-light Distance</b>	-	-
<b>LumiSearch / LumiSearch+</b>	-	-
<b>LumiAnalytics+</b>	-	-
<b>iMD</b>	Yes	Yes
<b>VCA / VCA+</b>	-	-
<b>Audio In/Out</b>	1 Input/1 Output	Built-in Microphone, 1 Input/1 Output
<b>Alarm In/Out</b>	1 Input/1 Output	1 Input/1 Output
<b>Memory Slot</b>	Max. 1 TB	Max. 1 TB
<b>Protection Rating</b>	IP66, IK10	IP66, IK10
<b>Operating Temperature</b>	-22 °F to 140 °F (-30 °C to 60 °C)	-22 °F to 140 °F (-30 °C to 60 °C)
<b>Power</b>	PoE, 12 VDC	PoE, 12 VDC

**N2T-8RBV****N2B-8RBV****N2T-4RA2**

Series	AI Network Camera		
<b>Image Sensor</b>	1/2.7-in. CMOS	1/2.7-in. CMOS	1/2.9-in CMOS
<b>Max. Resolution</b>	8MP (3840 x 2160)	8MP (3840 x 2160)	4MP (2688 x 1520)
<b>Focal Length</b>	2.7 mm to 13.5 mm	2.7 mm to 13.5 mm	2.8 mm
<b>Min. Illumination</b>	Color: 0.2 Lux B/W: < 0.005 Lux	Color: 0.2 Lux B/W: < 0.005 Lux	Color: 0.005 Lux at F1.6 B/W: 0.0005 Lux at F1.6
<b>Max. IR Distance</b>	98 ft (30 m)	98 ft (30 m)	8 ft (30 m)
<b>Max. White-light Distance</b>	-	-	-
<b>LumiSearch / LumiSearch*</b>	-	-	No
<b>LumiAnalytics*</b>	-	-	No
<b>iMD</b>	Yes	Yes	iMD
<b>VCA / VCA+</b>	-	-	VCA
<b>Audio In/Out</b>	Built-in Microphone, 1 Input/1 Output	Built-in Microphone, 1 Input/1 Output	Built-in Microphone
<b>Alarm In/Out</b>	1 Input/1 Output	1 Input/1 Output	-
<b>Memory Slot</b>	Max. 1 TB	Max. 1 TB	Max. 256 GB
<b>Protection Rating</b>	IP66, IK10	IP66, IK10	IP67
<b>Operating Temperature</b>	-22 °F to 140 °F (-30 °C to 60 °C)	-22 °F to 140 °F (-30 °C to 60 °C)	-40 °F to 140 °F (-40 °C to 60 °C)
<b>Power</b>	PoE, 12 VDC	PoE, 12 VDC	PoE, 12 VDC



**N3B-8LAV**



**N3T-4LA2  
N3T-4LA2B (Black)**



**N3T-4LAV**

Series	N3-L LumiLuxSmart		
<b>Image Sensor</b>	1/2.7-in. CMOS	1/2.9-in. CMOS	1/2.9-in. CMOS
<b>Max. Resolution</b>	8MP (3840 x 2160)	4MP (2688 x 1520)	4MP (2688 x 1520)
<b>Focal Length</b>	2.7 mm to 13.5 mm	2.8 mm	2.7 mm to 13.5 mm
<b>Min. Illumination</b>	Color: 0.007 Lux at F1.5 B/W: 0.0007 Lux at F1.5 0 Lux With Illuminator On	Color: 0.005 Lux at F1.6 B/W: 0.0005 Lux at F1.6 0 Lux With Illuminator On	Color: 0.005 Lux at F1.5 B/W: 0.0005 Lux at F1.5 0 Lux With Illuminator On
<b>Max. IR Distance</b>	200 ft (61 m)	100 ft (30 m)	130 ft (40 m)
<b>Max. White-light Distance</b>	200 ft (61m)	100 ft (30 m)	130 ft (40 m)
<b>LumiSearch / LumiSearch+</b>	No	No	No
<b>LumiAnalytics+</b>	No	No	No
<b>iMD</b>	Yes	Yes	Yes
<b>VCA / VCA+</b>	VCA	VCA	VCA
<b>Audio In/Out</b>	Built-in Microphone, 1 Input/1 Output	Built-in Microphone, 1 Input/1 Output	Built-in Microphone
<b>Alarm In/Out</b>	1 Input/1 Output	1 Input/1 Output	No
<b>Memory Slot</b>	Max. 256 GB	Max. 256 GB	Max. 256 GB
<b>Protection Rating</b>	IP67, IK10	IP67	IP67
<b>Operating Temperature</b>	-40 °F to 140 °F (-40 °C to 60 °C)	-40 °F to 140 °F (-40 °C to 60 °C)	-22 °F to 140 °F (-30 °C to 60 °C)
<b>Power</b>	PoE, 12 VDC	PoE, 12 VDC	PoE, 12 VDC

ACCESS CONTROL

TRANSMISSION

ANALOG

ACCESSORIES

LUMIGUARDIAN

**N3T-8LA2****N3T-8LAV****N3D-4LA2**

Series	N3-L LumiLuxSmart		
<b>Image Sensor</b>	1/2.7-in. CMOS	1/2.7-in. CMOS	1/2.9-in. CMOS
<b>Max. Resolution</b>	8MP (3840 x 2160)	8MP (3840 x 2160)	4MP (2688 x 1520)
<b>Focal Length</b>	2.8 mm	2.7 mm to 13.5 mm	2.8 mm
<b>Min. Illumination</b>	Color: 0.007 Lux at F1.6 B/W: 0.0007 Lux at F1.6 0 Lux With Illuminator On	Color: 0.007 Lux at F1.5 B/W: 0.0007 Lux at F1.5 0 Lux With Illuminator On	Color: 0.005 Lux at F1.6 B/W: 0.0005 Lux at F1.6 0 Lux With Illuminator On
<b>Max. IR Distance</b>	100 ft (30 m)	130 ft (40 m)	100 ft (30 m)
<b>Max. White-light Distance</b>	100 ft (30 m)	130 ft (40 m)	100 ft (30 m)
<b>LumiSearch / LumiSearch<sup>+</sup></b>	No	No	No
<b>LumiAnalytics<sup>+</sup></b>	No	No	No
<b>iMD</b>	Yes	Yes	Yes
<b>VCA / VCA<sup>+</sup></b>	VCA	VCA	VCA
<b>Audio In/Out</b>	Built-in Microphone, 1 Input/1 Output	Built-in Microphone	Built-in Microphone, 1 Input/1 Output
<b>Alarm In/Out</b>	1 Input/1 Output	No	1 Input/1 Output
<b>Memory Slot</b>	Max. 256 GB	Max. 256 GB	Max. 256 GB
<b>Protection Rating</b>	IP67	IP67	IP67, IK10
<b>Operating Temperature</b>	-40 °F to 140 °F (-40 °C to 60 °C)	-22 °F to 140 °F (-30 °C to 60 °C)	-40 °F to 140 °F (-40 °C to 60 °C)
<b>Power</b>	PoE, 12 VDC	PoE, 12 VDC	PoE, 12 VDC

**N3D-4LAV****N3D-8LA2****N3D-8LAV****N3W-4LA2**

ACCESS CONTROL

TRANSMISSION

ANALOG

ACCESSORIES

LUMIGUARDIAN

Series	N3-L LumiLuxSmart			
<b>Image Sensor</b>	1/2.9-in. CMOS	1/2.7-in. CMOS	1/2.7-in. CMOS	1/2.9-in. CMOS
<b>Max. Resolution</b>	4MP (2688 x 1520)	8MP (3840 x 2160)	8MP (3840 x 2160)	4MP (2688 x 1520)
<b>Focal Length</b>	2.7 mm to 13.5 mm	2.8 mm	2.8 mm	2.8 mm
<b>Min. Illumination</b>	Color: 0.005 Lux at F1.5 B/W: 0.0005 Lux at F1.5 0 Lux With Illuminator On	Color: 0.007 Lux at F1.6 B/W: 0.0007 Lux at F1.6 0 Lux With Illuminator On	Color: 0.007 Lux at F1.6 B/W: 0.0007 Lux at F1.6 0 Lux With Illuminator On	Color: 0.007 Lux at F1.6 B/W: 0.0007 Lux at F1.6 0 Lux With Illuminator On
<b>Max. IR Distance</b>	130 ft (40 m)	100 ft (30 m)	200 ft (61 m)	100 ft (30 m)
<b>Max. White-light Distance</b>	130 ft (40 m)	100 ft (30 m)	200 ft (61 m)	100 ft (30 m)
<b>LumiSearch / LumiSearch*</b>	No	No	No	No
<b>LumiAnalytics*</b>	No	No	No	No
<b>iMD</b>	Yes	Yes	Yes	Yes
<b>VCA / VCA+</b>	VCA	VCA	VCA	VCA
<b>Audio In/Out</b>	Built-in Microphone, 1 Input/1 Output	Built-in Microphone, 1 Input/1 Output	Built-in Microphone, 1 Input/1 Output	Built-in Microphone, 1 Input/1 Output
<b>Alarm In/Out</b>	1 Input/1 Output	1 Input/1 Output	1 Input/1 Output	1 Input/1 Output
<b>Memory Slot</b>	Max. 256 GB	Max. 256 GB	Max. 256 GB	Max. 256 GB
<b>Protection Rating</b>	IP67, IK10	IP67, IK10	IP67, IK10	IP67, IK10
<b>Operating Temperature</b>	-40 °F to 140 °F (-40 °C to 60 °C)	-40 °F to 140 °F (-40 °C to 60 °C)	-40 °F to 140 °F (-40 °C to 60 °C)	-40 °F to 140 °F (-40 °C to 60 °C)
<b>Power</b>	PoE, 12 VDC	PoE, 12 VDC	PoE, 12 VDC	PoE, 12 VDC

**N3B-4LA2****N3B-4LAV****N3B-8LA2**

Series	N3-L		
<b>Image Sensor</b>	1/2.9-in. CMOS	1/2.9-in. CMOS	1/2.7-in. CMOS
<b>Max. Resolution</b>	4MP (2688 x 1520)	4MP (2688 x 1520)	8MP (3840 x 2160)
<b>Focal Length</b>	2.8 mm	2.7 mm to 13.5 mm	2.8 mm
<b>Min. Illumination</b>	Color: 0.005 Lux at F1.6 B/W: 0.0005 Lux at F1.6 0 Lux With Illuminator On	Color: 0.005 Lux at F1.5 B/W: 0.0005 Lux at F1.5 0 Lux With Illuminator On	Color: 0.007 Lux at F1.6 B/W: 0.0007 Lux at F1.6 0 Lux With Illuminator On
<b>Max. IR Distance</b>	100 ft (30 m)	200 ft (61 m)	100 ft (30 m)
<b>Max. White-light Distance</b>	100 ft (30 m)	200 ft (61 m)	100 ft (30 m)
<b>LumiSearch / LumiSearch+</b>	No	No	No
<b>LumiAnalytics*</b>	No	No	No
<b>iMD</b>	Yes	Yes	Yes
<b>VCA / VCA+</b>	VCA	VCA	VCA
<b>Audio In/Out</b>	Built-in Microphone 1 Input/1 Output	Built-in Microphone 1 Input/1 Output	Built-in Microphone 1 Input/1 Output
<b>Alarm In/Out</b>	1 Input/1 Output	1 Input/1 Output	1 Input/1 Output
<b>Memory Slot</b>	Max. 256 GB	Max. 256 GB	Max. 256 GB
<b>Protection Rating</b>	IP67	IP67, IK10	IP67
<b>Operating Temperature</b>	-40 °F to 140 °F (-40 °C to 60 °C)	-40 °F to 140 °F (-40 °C to 60 °C)	-40 °F to 140 °F (-40 °C to 60 °C)
<b>Power</b>	PoE, 12 VDC	PoE, 12 VDC	PoE, 12 VDC



**N3T-8BA2**



**N3T-5DA2**  
(Coming Soon)

Series	N3-B LumiLightBand	N3-D LumiDeterrent
Image Sensor	1/2.7-in. CMOS	1/2.7-in, CMOS
Max. Resolution	8MP (3840 x 2160)	5MP (2960 x 1688)
Focal Length	2.8 mm	2.8 mm
Min. Illumination	Color: 0.008 Lux at F1.6 B/W: 0.0008 Lux at F1.6 0 Lux With Illuminator On	Color: 0.007 Lux at F1.6 B/W: 0.0007 Lux at F1.6 0 Lux With Illuminator On
Max. IR Distance	98 ft (30 m)	98 ft (30 m)
Max. White-light Distance	98 ft (30 m)	98 ft (30 m)
LumiSearch / LumiSearch+	No	No
LumiAnalytics*	No	No
iMD	Yes	No
VCA / VCA+	VCA	VCA
Audio In/Out	Built-in Microphone	Built-in Microphone
Alarm In/Out	No	No
Memory Slot	Max. 256 GB	Max. 256 GB
Protection Rating	IP67	IP67
Operating Temperature	-40 °F to 140 °F (-40 °C to 60 °C)	-40 °F to 140 °F (-40 °C to 60 °C)
Power	PoE, 12 VDC	PoE, 12 VDC

VCA: Line Crossing and Intrusion

VCA+: Line Crossing, Intrusion, Loitering Detection, and Parking Detection

**N4T-4VA2****N4T-8VA2****N4B-4VA2****N4B-8VA2**

Series	N4 LumiNightKing			
<b>Image Sensor</b>	1/1.8-in. CMOS	1/1.8-in. CMOS	1/1.8-in. CMOS	1/1.8-in. CMOS
<b>Max. Resolution</b>	4MP (2688 × 1520)	8MP (3840 × 2160)	4MP (2688 × 1520)	8MP (3840 × 2160)
<b>Focal Length</b>	2.8 mm	2.8 mm	2.8 mm	2.8 mm
<b>Min. Illumination</b>	Color: 0.0005 Lux at F1.0 0 Lux With Illuminator On	Color: 0.0008 Lux at F1.0 0 Lux With Illuminator On	Color: 0.0005 Lux at F1.0 0 Lux With Illuminator On	Color: 0.0008 Lux at F1.0 0 Lux With Illuminator On
<b>Max. IR Distance</b>	No	No	No	No
<b>Max. White-light Distance</b>	98 ft (30 m)	164 ft (50 m)	98 ft (30 m)	164 ft (50 m)
<b>LumiSearch / LumiSearch+</b>	No	No	No	No
<b>LumiAnalytics*</b>	No	No	No	No
<b>iMD</b>	Yes	Yes	Yes	Yes
<b>VCA / VCA+</b>	VCA	VCA	VCA	VCA
<b>Audio In/Out</b>	Built-in Microphone	Built-in Microphone	Built-in Microphone	Built-in Microphone
<b>Alarm In/Out</b>	No	No	No	No
<b>Memory Slot</b>	Max. 256 GB	Max. 256 GB	Max. 256 GB	Max. 256 GB
<b>Protection Rating</b>	IP67	IP67	IP67	IP67
<b>Operating Temperature</b>	-40 °F to 140 °F (-40 °C to 60 °C)	-40 °F to 140 °F (-40 °C to 60 °C)	-40 °F to 140 °F (-40 °C to 60 °C)	-40 °F to 140 °F (-40 °C to 60 °C)
<b>Power</b>	PoE, 12 VDC	PoE, 12 VDC	PoE, 12 VDC	PoE, 12 VDC

VCA: Line Crossing and Intrusion

VCA+: Line Crossing, Intrusion, Loitering Detection, and Parking Detection

**N5T-4DA2****N5T-8DA2****N5T-8DAV****N5P-12DB2**  
(Coming Soon)**N5P-8DA2**

Series	N5-D LumiDeterrent				
<b>Image Sensor</b>	1/2.7-in. CMOS	1/2.8-in. CMOS	1/2.8-in. CMOS	1/2.7-in. CMOS	1/2.7-in. CMOS
<b>Max. Resolution</b>	4MP (2688 × 1520)	8MP (3840 × 2160)	8MP (3840 × 2160)	2 x 6MP (4096 × 1860)	2 x 4MP (4096 × 1860)
<b>Focal Length</b>	2.8 mm	2.8 mm	2.7 mm to 13.5 mm	2.8 mm	2.8 mm
<b>Min. Illumination</b>	Color: 0.001 Lux at F1.0 B/W: 0.0001 Lux at F1.0 0 Lux With Illuminator On	Color: 0.001 Lux at F1.0 B/W: 0.0001 Lux at F1.0 0 Lux With Illuminator On	Color: 0.002 Lux at F1.0 B/W: 0.0002 Lux at F1.0 0 Lux With Illuminator On	Color: 0.002 Lux at F1.4 B/W: 0.0002 Lux at F1.4 0 Lux With Illuminator On	Color: 0.002 Lux at F1.4 B/W: 0.0002 Lux at F1.4 0 Lux With Illuminator On
<b>Max. IR Distance</b>	98 ft (30 m)	98 ft (30 m)	164 ft (50 m)	82 ft (25 m)	82 ft (25 m)
<b>Max. White-light Distance</b>	98 ft (30 m)	98 ft (30 m)	131 ft (40 m)	66 ft (20 m)	66 ft (20 m)
<b>LumiSearch / LumiSearch*</b>	LumiSearch	LumiSearch	LumiSearch	LumiSearch*	No
<b>LumiAnalytics*</b>	No	No	No	No	No
<b>iMD</b>	Yes	Yes	Yes	Yes	Yes
<b>VCA / VCA+</b>	VCA+**	VCA+**	VCA+**	VCA+**	VCA+**
<b>Audio In/Out</b>	Built-in Microphone, 1 Input/Built-in Speaker, 1 Output	Built-in Microphone, 1 Input/Built-in Speaker, 1 Output	Built-in Microphone, 1 Input/Built-in Speaker, 1 Output	Built-in Microphone, Built-in Speaker	Built-in Microphone, 1 Input/Built-in Speaker, 1 Output
<b>Alarm In/Out</b>	1 Input/1 Output	1 Input/1 Output	1 Input/1 Output	1 Input/1 Output	1 Input/1 Output
<b>Memory Slot</b>	Max. 256 GB	Max. 256 GB	Max. 512 GB	Max. 256 GB	Max. 256 GB
<b>Protection Rating</b>	IP67	IP67	IP67	IP67	IP67
<b>Operating Temperature</b>	-40 °F to 140 °F (-40 °C to 60 °C)	-40 °F to 140 °F (-40 °C to 60 °C)	-22 °F to 140 °F (-30 °C to 60 °C)	-40 °F to 140 °F (-40 °C to 60 °C)	-40 °F to 140 °F (-40 °C to 60 °C)
<b>Power</b>	PoE, 12 VDC	PoE, 12 VDC	PoE, 12 VDC	PoE, 12 VDC	PoE, 12 VDC

\*Face Detection, People Counting, Queue Management, Heat Map, Smart Object Detection. Features may vary. Refer to the product datasheet for exact specifications.

\*\*Parking Detection Not Supported

\*\*\*Fence Climbing, Abandoned/Missing Object, People Gathering, Vehicle/Human Alarm Classification, Linkage Tracking

ACCESS CONTROL

TRANSMISSION

ACCESSORIES

LUMIGUARDIAN

**N5T-4LA2****N5T-8LA2/  
N5T-8LA2B****N5T-12LA2**

Series	N5-L LumiLuxSmart		
<b>Image Sensor</b>	1/1.8-in. CMOS	1/1.8-in. CMOS	1/2.5-in. CMOS
<b>Max. Resolution</b>	4MP (2688 × 1520)	8MP (3840 × 2160)	12MP (4512 × 2512)
<b>Focal Length</b>	2.8 mm	2.8 mm	2.8 mm
<b>Min. Illumination</b>	Color: 0.0005 Lux at F1.0 B/W: 0.0003 Lux at F1.0 0 Lux With Illuminator On	Color: 0.0005 Lux at F1.0 B/W: 0.0003 Lux at F1.0 0 Lux With Illuminator On	Color: 0.0085 Lux at F1.6 B/W: 0.0008 Lux at F1.6 0 Lux With Illuminator On
<b>Max. IR Distance</b>	98 ft (30 m)	98 ft (30 m)	98 ft (30 m)
<b>Max. White-light Distance</b>	98 ft (30 m)	98 ft (30 m)	98 ft (30 m)
<b>LumiSearch / LumiSearch+</b>	LumiSearch+	LumiSearch+	LumiSearch+
<b>LumiAnalytics*</b>	Yes	Yes	Yes
<b>iMD</b>	Yes	Yes	Yes
<b>VCA / VCA+</b>	VCA+	VCA+	VCA+
<b>Audio In/Out</b>	Built-in Microphone, 1 Input/1 Output	Built-in Microphone, 1 Input/1 Output	Built-in Microphone, 1 Input/1 Output
<b>Alarm In/Out</b>	1 Input/1 Output	1 Input/1 Output	1 Input/1 Output
<b>Memory Slot</b>	Max. 512 GB	Max. 512 GB	Max. 512 GB
<b>Protection Rating</b>	IP67	IP67	IP67
<b>Operating Temperature</b>	-40 °F to 140 °F (-40 °C to 60 °C)	-40 °F to 140 °F (-40 °C to 60 °C)	-40 °F to 140 °F (-40 °C to 60 °C)
<b>Power</b>	PoE, 12 VDC, LumiPower	PoE, 12 VDC, LumiPower	PoE, 12 VDC, LumiPower

VCA: Line Crossing and Intrusion

VCA+: Line Crossing, Intrusion, Loitering Detection, and Parking Detection



**N5T-4LAV**



**N5T-8LAV**



**N5B-4LA2**



**N5B-8LA2**



**N5B-8SAL**

ACCESS CONTROL

TRANSMISSION

ACCESSORIES

LUMIGUARDIAN

Series	N5-L LumiLuxSmart				
<b>Image Sensor</b>	1/1.8-in. CMOS	1/1.8-in. CMOS	1/1.8-in. CMOS	1/1.8-in. CMOS	1/1.8-in. CMOS
<b>Max. Resolution</b>	4MP (2688 × 1520)	8MP (3840 × 2160)	4MP (2688 × 1520)	8MP (3840 × 2160)	8MP (3840 × 2160)
<b>Focal Length</b>	2.7 mm to 12 mm	2.7 mm to 12 mm	2.8 mm	2.8 mm	8 mm to 32 mm
<b>Min. Illumination</b>	Color: 0.0006 Lux at F1.2 B/W: 0.0003 Lux at F1.2 0 Lux With Illuminator On	Color: 0.0007 Lux at F1.2 B/W: 0.0004 Lux at F1.2 0 Lux With Illuminator On	Color: 0.0005 Lux at F1.0 B/W: 0.0003 Lux at F1.0 0 Lux With Illuminator On	Color: 0.0005 Lux at F1.0 B/W: 0.0003 Lux at F1.0 0 Lux With Illuminator On	Color: 0.0007 Lux at F1.2 B/W: 0.0004 Lux at F1.2 0 Lux With Illuminator On
<b>Max. IR Distance</b>	131 ft (40 m)	131 ft (40 m)	98 ft (30 m)	98 ft (30 m)	164 ft (50 m)
<b>Max. White-light Distance</b>	131 ft (40 m)	131 ft (40 m)	98 ft (30 m)	98 ft (30 m)	164 ft (50 m)
<b>LumiSearch / LumiSearch+</b>	LumiSearch+	LumiSearch+	LumiSearch+	LumiSearch+	LumiSearch+
<b>LumiAnalytics*</b>	Yes	Yes	Yes	Yes	Yes
<b>iMD</b>	Yes	Yes	Yes	Yes	Yes
<b>VCA / VCA+</b>	VCA+	VCA+	VCA+	VCA+	VCA+
<b>Audio In/Out</b>	Built-in Microphone, 1 Input/1 Output	Built-in Microphone, 1 Input/1 Output	Built-in Microphone, 1 Input/1 Output	Built-in Microphone, 1 Input/1 Output	Built-in Microphone, 1 Input/1 Output
<b>Alarm In/Out</b>	1 Input/1 Output	1 Input/1 Output	1 Input/1 Output	1 Input/1 Output	1 Input/1 Output
<b>Memory Slot</b>	Max. 512 GB	Max. 512 GB	Max. 512 GB	Max. 512 GB	Max. 512 GB
<b>Protection Rating</b>	IP67	IP67	IP67, IK10	IP67, IK10	IP67, IK10
<b>Operating Temperature</b>	-22 °F to 140 °F (-30 °C to 60 °C)	-22 °F to 140 °F (-30 °C to 60 °C)	-40 °F to 140 °F (-40 °C to 60 °C)	-40 °F to 140 °F (-40 °C to 60 °C)	-22 °F to 140 °F (-30 °C to 60 °C)
<b>Power</b>	PoE, 12 VDC, LumiPower	PoE, 12 VDC, LumiPower	PoE, 12 VDC, LumiPower	PoE, 12 VDC, LumiPower	PoE, 12 VDC, LumiPower

\*Face Detection, People Counting, Queue Management, Heat Map, Smart Object Detection. Features may vary. Refer to the product datasheet for exact specifications.

\*\*Parking Detection Not Supported

\*\*\*Fence Climbing, Abandoned/Missing Object, People Gathering, Vehicle/Human Alarm Classification, Linkage Tracking

**N5B-12LA2****N5B-4LAV****N5B-8LAV****N5D-4LA2**

Series	N5-L LumiLuxSmart			
<b>Image Sensor</b>	1/2.5-in. CMOS	1/1.8-in. CMOS	1/1.8-in. CMOS	1/1.8-in. CMOS
<b>Max. Resolution</b>	12MP (4512 x 2512)	4MP (2688 x 1520)	8MP (3840 x 2160)	4MP (2688 x 1520)
<b>Focal Length</b>	2.8 mm	2.7 mm to 12 mm	2.7 mm to 12 mm	2.8 mm
<b>Min. Illumination</b>	Color: 0.0085 Lux at F1.6 B/W: 0.0008 Lux at F1.6 0 Lux With Illuminator On	Color: 0.0006 Lux at F1.2 B/W: 0.0003 Lux at F1.2 0 Lux With Illuminator On	Color: 0.0007 Lux at F1.2 B/W: 0.0004 Lux at F1.2 0 Lux With Illuminator On	Color: 0.0008 Lux at F1.4 B/W: 0.0005 Lux at F1.4 0 Lux With Illuminator On
<b>Max. IR Distance</b>	98 ft (30 m)	164 ft (50 m)	164 ft (50 m)	98 ft (30 m)
<b>Max. White-light Distance</b>	98 ft (30 m)	164 ft (50 m)	164 ft (50 m)	98 ft (30 m)
<b>LumiSearch / LumiSearch*</b>	LumiSearch+	LumiSearch+	LumiSearch+	LumiSearch+
<b>LumiAnalytics*</b>	Yes	Yes	Yes	Yes
<b>iMD</b>	Yes	Yes	Yes	Yes
<b>VCA / VCA+</b>	VCA+	VCA+	VCA+	VCA+
<b>Audio In/Out</b>	Built-in Microphone, 1 Input/1 Output	Built-in Microphone, 1 Input/1 Output	Built-in Microphone, 1 Input/1 Output	Built-in Microphone, 1 Input/1 Output
<b>Alarm In/Out</b>	1 Input/1 Output	1 Input/1 Output	1 Input/1 Output	1 Input/1 Output
<b>Memory Slot</b>	Max. 512 GB	Max. 512 GB	Max. 512 GB	Max. 512 GB
<b>Protection Rating</b>	IP67, IK10	IP67, IK10	IP67, IK10	IP67, IK10
<b>Operating Temperature</b>	-40 °F to 140 °F (-40 °C to 60 °C)	-22 °F to 140 °F (-30 °C to 60 °C)	-22 °F to 140 °F (-30 °C to 60 °C)	-40 °F to 140 °F (-40 °C to 60 °C)
<b>Power</b>	PoE, 12 VDC, LumiPower	PoE, 12 VDC, LumiPower	PoE, 12 VDC, LumiPower	PoE, 12 VDC, LumiPower

VCA: Line Crossing and Intrusion

VCA+: Line Crossing, Intrusion, Loitering Detection, and Parking Detection



**N5D-8LA2**



**N5D-12LA2**



**N5D-4LAV**



**N5D-8LAV**

Series	N5-L LumiLuxSmart			
<b>Image Sensor</b>	1/1.8-in. CMOS	1/2.5-in. CMOS	1/1.8-in. CMOS	1/1.8-in. CMOS
<b>Max. Resolution</b>	8MP (3840 x 2160)	12MP (4512 x 2512)	4MP (2688 x 1520)	8MP (3840 x 2160)
<b>Focal Length</b>	2.8 mm	2.8 mm	2.7 mm to 12 mm	2.7 mm to 12 mm
<b>Min. Illumination</b>	Color: 0.0008 Lux at F1.4 B/W: 0.0005 Lux at F1.4 0 Lux With Illuminator On	Color: 0.0085 Lux at F1.6 B/W: 0.0008 Lux at F1.6 0 Lux With Illuminator On	Color: 0.0006 Lux at F1.2 B/W: 0.0003 Lux at F1.2 0 Lux With Illuminator On	Color: 0.0007 Lux at F1.2 B/W: 0.0004 Lux at F1.2 0 Lux With Illuminator On
<b>Max. IR Distance</b>	98 ft (30 m)	98 ft (30 m)	98 ft (30 m)	98 ft (30 m)
<b>Max. White-light Distance</b>	98 ft (30 m)	98 ft (30 m)	98 ft (30 m)	98 ft (30 m)
<b>LumiSearch / LumiSearch+</b>	LumiSearch+	LumiSearch+	LumiSearch+	LumiSearch+
<b>LumiAnalytics*</b>	Yes	Yes	Yes	Yes
<b>iMD</b>	Yes	Yes	Yes	Yes
<b>VCA / VCA+</b>	VCA+	VCA+	VCA+	VCA+
<b>Audio In/Out</b>	Built-in Microphone, 1 Input/1 Output	Built-in Microphone, 1 Input/1 Output	Built-in Microphone, 1 Input/1 Output	Built-in Microphone, 1 Input/1 Output
<b>Alarm In/Out</b>	1 Input/1 Output	1 Input/1 Output	1 Input/1 Output	1 Input/1 Output
<b>Memory Slot</b>	Max. 512 GB	Max. 512 GB	Max. 512 GB	Max. 512 GB
<b>Protection Rating</b>	IP67, IK10	IP67, IK10	IP67, IK10	IP67, IK10
<b>Operating Temperature</b>	-40 °F to 140 °F (-40 °C to 60 °C)	-40 °F to 140 °F (-40 °C to 60 °C)	-40 °F to 140 °F (-40 °C to 60 °C)	-22 °F to 140 °F (-30 °C to 60 °C)
<b>Power</b>	PoE, 12 VDC, LumiPower	PoE, 12 VDC, LumiPower	PoE, 12 VDC, LumiPower	PoE, 12 VDC, LumiPower

\*Face Detection, People Counting, Queue Management, Heat Map, Smart Object Detection. Features may vary. Refer to the product datasheet for exact specifications.

\*\*Parking Detection Not Supported

\*\*\*Fence Climbing, Abandoned/Missing Object, People Gathering, Vehicle/Human Alarm Classification, Linkage Tracking

ACCESS CONTROL

TRANSMISSION

ACCESSORIES

LUMIGUARDIAN

**N5T-4CA2****N5T-8CA2****N5B-4CA2****N5B-8CA2**

Series	N5-C LumiColor			
<b>Image Sensor</b>	1/1.8-in. CMOS	1/1.8-in. CMOS	1/1.8-in. CMOS	1/1.8-in. CMOS
<b>Max. Resolution</b>	4MP (2688 × 1520)	8MP (3840 x 2160)	4MP (2688 × 1520)	8MP (3840 x 2160)
<b>Focal Length</b>	2.8 mm	2.8 mm	2.8 mm	2.8 mm
<b>Min. Illumination</b>	Color: 0.0005 Lux at F1.0 0 Lux With Illuminator On	Color: 0.0005 Lux at F1.0 0 Lux With Illuminator On	Color: 0.0005 Lux at F1.0 0 Lux With Illuminator On	Color: 0.0005 Lux at F1.0 0 Lux With Illuminator On
<b>Max. IR Distance</b>	No	No	No	No
<b>Max. White-light Distance</b>	98 ft (30 m)	98 ft (30 m)	98 ft (30 m)	98 ft (30 m)
<b>LumiSearch / LumiSearch+</b>	LumiSearch	LumiSearch	LumiSearch	LumiSearch
<b>LumiAnalytics*</b>	Yes	Yes	Yes	Yes
<b>iMD</b>	Yes	Yes	Yes	Yes
<b>VCA / VCA+</b>	VCA+	VCA+	VCA+	VCA+
<b>Audio In/Out</b>	Built-in Microphone	Built-in Microphone	Built-in Microphone	Built-in Microphone
<b>Alarm In/Out</b>	No	No	No	No
<b>Memory Slot</b>	Max. 512 GB	Max. 512 GB	Max. 512 GB	Max. 512 GB
<b>Protection Rating</b>	IP67	IP67	IP67, IK10	IP67, IK10
<b>Operating Temperature</b>	-40 °F to 140 °F (-40 °C to 60 °C)	-40 °F to 140 °F (-40 °C to 60 °C)	-40 °F to 140 °F (-40 °C to 60 °C)	-40 °F to 140 °F (-40 °C to 60 °C)
<b>Power</b>	PoE, 12 VDC, LumiPower	PoE, 12 VDC, LumiPower	PoE, 12 VDC, LumiPower	PoE, 12 VDC, LumiPower

\*Face Detection, People Counting, Queue Management, Heat Map, Smart Object Detection. Features may vary. Refer to the product datasheet for exact specifications.

\*\*Parking Detection Not Supported

\*\*\*Fence Climbing, Abandoned/Missing Object, People Gathering, Vehicle/Human Alarm Classification, Linkage Tracking

VCA: Line Crossing and Intrusion

VCA+: Line Crossing, Intrusion, Loitering Detection, and Parking Detection



**N9F-12RA1**



**N9F-8RA1**



**N9F-6RA1**  
(Coming Soon)



**N9L-4RAL**

Series	N9F Fisheye			N9L LPR
<b>Image Sensor</b>	1/1.7-in. CMOS	1/1.7-in. CMOS	1/2.5-in. CMOS	1/1.8-in. CMOS
<b>Max. Resolution</b>	12MP (4000 x 3000)	8MP (3840 x 2160)	6MP (2560 x 2560)	4MP (2688 x 1520)
<b>Focal Length</b>	1.85 mm	1.85 mm	1.68 mm	10 mm to 50 mm
<b>Min. Illumination</b>	Color: 0.01 Lux at F2.0 B/W: 0.001 Lux at F2.0 0 Lux With Illuminator On	Color: 0.01 Lux at F2.0 B/W: 0.001 Lux at F2.0 0 Lux With Illuminator On	Color: 0.006 Lux at F2.0 B/W: 0.0006 Lux at F2.0 0 Lux With Illuminator On	0.002 Lux
<b>Max. IR Distance</b>	33 ft (10 m)	33 ft (10 m)	50 ft (15 m)	98 ft (30 m)
<b>Max. White-light Distance</b>	No	No	No	No
<b>LumiSearch / LumiSearch*</b>	No	No	No	No
<b>LumiAnalytics*</b>	Yes	Yes	Yes	Vehicle Type, Color, Brand
<b>iMD</b>	No	No	No	No
<b>VCA / VCA+</b>	VCA	VCA	VCA	No
<b>Audio In/Out</b>	Built-in Microphone, 1 Input/1 Output	Built-in Microphone, 1 Input/1 Output	Built-in Dual Microphone, 1 Input/1 Output	1 Output
<b>Alarm In/Out</b>	2 Inputs/2 Outputs	2 Inputs/2 Outputs	1 Input/1 Output	2 Inputs/2 Outputs
<b>Memory Slot</b>	Max. 256 GB	Max. 256 GB	Max. 1 TB	Max. 128 GB
<b>Protection Rating</b>	IP67, IK10	IP67, IK10	IP67, IK10	IP67, IK10
<b>Operating Temperature</b>	-22 °F to 140 °F (-30 °C to 60 °C)	-40 °F to 140 °F (-40 °C to 60 °C)	-22 °F to 140 °F (-30 °C to 60 °C)	-40 °F to 140 °F (-40 °C to 60 °C)
<b>Power</b>	PoE+, 1 2VDC	PoE+, 12 VDC	PoE, 12 VDC	PoE+, 12 VDC

\*Face Detection, People Counting, Queue Management, Heat Map, Smart Object Detection. Features may vary. Refer to the product datasheet for exact specifications.

\*\*Parking Detection Not Supported

\*\*\*Fence Climbing, Abandoned/Missing Object, People Gathering, Vehicle/Human Alarm Classification, Linkage Tracking

ACCESS CONTROL

TRANSMISSION

ACCESSORIES

LUMIGUARDIAN

**N9P-4RA2****N9P-20RAV**

Series	N9P Multi-sensors	
<b>Image Sensor</b>	1/2.7-in. CMOS	1/2.7-in. CMOS
<b>Max. Resolution</b>	2 x 4MP (2688 × 1520)	4 x 5MP (2592 × 1944)
<b>Focal Length</b>	2.8 mm	2.8 mm to 12 mm
<b>Min. Illumination</b>	B/W: 0.0007 Lux at F1.6 0 Lux With Illuminator On	Color: 0.005 Lux at F1.7 B/W: 0.0005 Lux at F1.7 0 Lux With Illuminator On
<b>Max. IR Distance</b>	100 ft (30 m)	98 ft (30 m)
<b>Max. White-light Distance</b>	No	No
<b>LumiSearch / LumiSearch+</b>	No	No
<b>LumiAnalytics*</b>	No	Face Detection, People Counting
<b>iMD</b>	Yes	No
<b>VCA / VCA+</b>	VCA	VCA+
<b>Audio In/Out</b>	Built-in Microphone, 1 Input/1 Output	1 Input/1 Output
<b>Alarm In/Out</b>	1 Input/1 Output	3 Inputs/2 Outputs
<b>Memory Slot</b>	Max. 256 GB	Max. 256 GB
<b>Protection Rating</b>	IP67	IP67, IK10
<b>Operating Temperature</b>	-40 °F to 140 °F (-40 °C to 60 °C)	-22 °F to 140 °F (-30 °C to 60 °C)
<b>Power</b>	PoE, 12 VDC	PoE+, 12 VDC

\*Face Detection, People Counting, Queue Management, Heat Map, Smart Object Detection. Features may vary. Refer to the product datasheet for exact specifications.

\*\*Parking Detection Not Supported

\*\*\*Fence Climbing, Abandoned/Missing Object, People Gathering, Vehicle/Human Alarm Classification, Linkage Tracking



**P54-4SA25**



**P55-4SA45**



**P5C-4SA32**



**P45-8RA25**

Series	P5-S LumiSearch			P4
<b>Image Sensor</b>	1/2.8-in. CMOS	1/2.8-in. CMOS	1/2.8-in. CMOS	1/1.8-in. CMOS
<b>Max. Resolution</b>	4MP (2560 x 1440)	4MP (2560 x 1440)	4MP (2560 x 1440)	8MP (3840 x 2160)
<b>Focal Length</b>	25x (5 mm to 125 mm)	45x (4 mm to 178 mm)	32x (4.8 mm to 154 mm)	25x (5 mm to 125 mm)
<b>Min. Illumination</b>	Color: 0.005 Lux at F1.6 B/W: 0.0005 Lux at F1.6 0 Lux With Illuminator On	Color: 0.005 Lux at F1.6 B/W: 0.0005 Lux at F1.6 0 Lux With Illuminator On	Color: 0.005 Lux at F1.6 B/W: 0.0005 Lux at F1.6 0 Lux With Illuminator On	Color: 0.005 Lux at F1.6 B/W: 0.0005 Lux at F1.6 0 Lux With Illuminator On
<b>Max. IR Distance</b>	328 ft (100 m)	492 ft (150 m)	No	492 ft (150 m)
<b>LumiTracking</b>	Yes	Yes	Yes	Yes
<b>LumiSearch / LumiSearch*</b>	LumiSearch	LumiSearch	LumiSearch	No
<b>LumiAnalytics*</b>	Yes	Yes	Yes	Yes
<b>iMD</b>	Yes	Yes	Yes	Yes
<b>VCA / VCA+</b>	VCA+***	VCA+***	VCA+***	VCA+***
<b>Audio In/Out</b>	1 Input/1 Output	1 Input/1 Output	1 Input/1 Output	1 Input/1 Output
<b>Alarm In/Out</b>	2 Inputs/2 Outputs	2 Inputs/2 Outputs	2 Inputs/2 Outputs	2 Inputs/1 Output
<b>Memory Slot</b>	Max. 512 GB	Max. 512 GB	Max. 512 GB	Max. 512 GB
<b>Protection Rating</b>	IP66	IP67, IK10	IK10	IP67, IK10
<b>Operating Temperature</b>	-40 °F to 158 °F (-40 °C to 70 °C)	-40 °F to 158 °F (-40 °C to 70 °C)	-40 °F to 140 °F (-40 °C to 60 °C)	-40 °F to 158 °F (-40 °C to 70 °C)
<b>Power</b>	PoE+, 12 VDC	PoE+, 24 VDC	PoE+, 24 VDC	PoE+, 24 VDC

\*Face Detection, People Counting, Queue Management, Heat Map, Smart Object Detection. Features may vary. Refer to the product datasheet for exact specifications.

\*\*Parking Detection Not Supported

\*\*\*Fence Climbing, Abandoned/Missing Object, People Gathering, Vehicle/Human Alarm Classification, Linkage Tracking

VCA: Line Crossing and Intrusion

VCA+: Line Crossing, Intrusion, Loitering Detection, and Parking Detection

ACCESS CONTROL

TRANSMISSION

ACCESSORIES

LUMIGUARDIAN



P54-4DA25



P54-4DB25



P44-8DB25

Series	P5-D LumiDeterrent		
<b>Image Sensor</b>	Panoramic: 1/2.7-in. CMOS PTZ: 1/2.8-in. CMOS	1/2.8-in. CMOS	1/2.8-in. CMOS
<b>Max. Resolution</b>	Panoramic: 8MP (4096 x 1860) PTZ: 4MP (2560 x 1440)	4MP (2560 x 1440)	8MP (3840 x 2160)
<b>Focal Length</b>	Panoramic: 2.8mm PTZ: 25x (5 mm to 125 mm)	25x (5 mm to 125 mm)	25x (5 mm to 125 mm)
<b>Min. Illumination</b>	<b>Panoramic:</b> Color: 0.005 lux at F1.4, B/W: 0.0005 lux at F1.4 0 Lux With Illuminator On <b>PTZ</b> Color: 0.005 lux at F1.6 B/W: 0.0005 lux at F1.6 0 Lux With Illuminator On	Color: 0.006 Lux at F1.6 B/W: 0.0006 Lux at F1.6 0 Lux With Illuminators On	Color: 0.006 Lux at F1.6 B/W: 0.0006 Lux at F1.6 0 Lux With Illuminators On
<b>Max. IR Distance</b>	Panoramic: 98 ft (30 m) PTZ: 328 ft (100 m)	330 ft (100 m)	330 ft (100 m)
<b>LumiTracking</b>	Yes	Yes	Yes
<b>LumiSearch / LumiSearch+</b>	No	LumiSearch	No
<b>LumiAnalytics+</b>	No	Yes	Yes
<b>iMD</b>	Yes	Yes	Yes
<b>VCA / VCA+</b>	VCA+***	VCA+***	VCA+***
<b>Audio In/Out</b>	1 Input/1 Output	1 Input/1 Output	1 Input/1 Output
<b>Alarm In/Out</b>	2 Inputs/1 Output	2 Inputs/1 Output	2 Inputs/1 Output
<b>Memory Slot</b>	Max. 512 GB	Max. 512 GB	Max. 512 GB
<b>Protection Rating</b>	IP66	IP66	IP66
<b>Operating Temperature</b>	-40 °F to 149 °F (-40 °C to 65 °C)	-40 °F to 140 °F (-40 °C to 60 °C)	-40 °F to 140 °F (-40 °C to 60 °C)
<b>Power</b>	PoE+, 12 VDC	PoE+, 12 VDC	PoE+, 12 VDC



**P22-4TA4**  
(Coming Soon)



**P32-4NA16D**  
(Coming Soon)

Series	P2-T	P3-N LumiNightKing
<b>Image Sensor</b>	1/2.8-in. CMOS	1/1.8-in. CMOS
<b>Max. Resolution</b>	4MP (2560 x 1440)	4MP (2560 x 1440)
<b>Focal Length</b>	4x (2.8 mm to 12 mm)	Fixed (3.6 mm) 16x (Digital Zoom)
<b>Min. Illumination</b>	Color: 0.005 lux at F1.6 B/W: 0.0005 lux at F1.6	Color: 0.0005 Lux at F1.0 0 Lux With Illuminator On
<b>Max. IR Distance</b>	No	No
<b>Max. White light Distance</b>	No	100 ft (30 m)
<b>LumiTracking</b>	No	Yes (Human Only)
<b>LumiSearch / LumiSearch*</b>	No	No
<b>LumiAnalytics*</b>	No	No
<b>iMD</b>	No	Yes
<b>VCA / VCA+</b>	VCA	VCA
<b>Audio In/Out</b>	No	Built-in Microphone Built-in Speaker
<b>Alarm In/Out</b>	No	No
<b>Memory Slot</b>	Max. 512 GB	Max. 512 GB
<b>Protection Rating</b>	IP66, IK10	IP66
<b>Operating Temperature</b>	-22 °F to 140 °F (-30 °C to 60 °C)	-22 °F to 131 °F (-30 °C to 55 °C)
<b>Power</b>	PoE, 12 VDC	PoE, 12 VDC

04

# Network Video Recorder



**R31-4PA****R31-8PA****R32-8PA****R32-16PA**

Series	R3 Starter Series NVRs			
<b>Key Features</b>	4CH 4K PoE NVR Camera-Side Analytics	8CH 4K PoE NVR Camera-Side Analytics	8CH 4K PoE NVR Camera-Side Analytics	16CH 4K PoE NVR Camera-Side Analytics
<b>Video Compression</b>	H.265, H.264, MJPEG	H.265, H.264, MJPEG	H.265, H.264, MJPEG	H.265, H.264, MJPEG
<b>IP Video Inputs</b>	4CH	8CH	8CH	16CH
<b>Max Input/Record Bandwidth</b>	80 Mbps	80 Mbps	160 Mbps	160 Mbps
<b>Display Output</b>	HDMI (Max. 4K), VGA (Max. 1080p)	HDMI (Max. 4K), VGA (Max. 1080p)	HDMI (Max. 4K), VGA (Max. 1080p)	HDMI (Max. 4K), VGA (Max. 1080p)
<b>Maximum HDD Capacity</b>	Up to 10 TB Total (1 x 10 TB per Drive)	Up to 10 TB Total (1 x 10 TB per Drive)	Up to 20 TB Total (2 x 10 TB per Drive)	Up to 20 TB Total (2 x 10 TB per Drive)
<b>eSATA/Mini SAS</b>	-	-	-	-
<b>Audio In/Out</b>	1/1	1/1	1/1	1/1
<b>Alarm In/Out</b>	-	-	4/2	4/2
<b>Ethernet Port</b>	1 Gigabit Port	1 Gigabit Port	1 Gigabit Port	1 Gigabit Port
<b>PoE Port</b>	4 PoE Ports	8 PoE Ports	8 PoE Ports	16 PoE Ports
<b>Dimensions</b>	10.2 × 9.2 × 1.8 in. (259.1 × 233.7 × 45.7 mm)	10.2 × 9.2 × 1.8 in. (259.1 × 233.7 × 45.7 mm)	14.7 × 12.8 × 1.7 in. (373.4 × 325.1 × 43.2 mm)	14.7 × 12.8 × 1.7 in. (373.4 × 325.1 × 43.2 mm)
<b>Power</b>	48–53 VDC, 36 W Max. PoE	48–53 VDC, 36 W Max. PoE	100–240 V, 115 W Max. PoE	100–240 V, 115 W Max. PoE
<b>LumiCloud</b>				

ACCESS CONTROL

TRANSMISSION

ACCESSORIES

LUMIGUARDIAN

**R42-8PA****R42-16PA**

Series	R4 Mainstream Series NVRs	
<b>Key Features</b>	8CH 16MP Analytics PoE NVR	16CH 16MP Analytics PoE NVR
<b>Video Compression</b>	H.265, H.264, MJPEG	H.265, H.264, MJPEG
<b>IP Video Inputs</b>	8CH	16CH
<b>Max. Input/Record Bandwidth</b>	256 Mbps	256 Mbps
<b>Display Output</b>	HDMI (Max. 4K), VGA (Max. 1080p)	HDMI (Max. 4K), VGA (Max. 1080p)
<b>Max. HDD Capacity</b>	Up to 32 TB Total (2 x 16 TB per Drive)	Up to 32 TB Total (2 x 16 TB per Drive)
<b>eSATA/Mini SAS</b>	-	-
<b>Audio In/Out</b>	1/1	1/1
<b>Alarm In/Out</b>	4/2	4/2
<b>Ethernet Port</b>	1 Gigabit Port	1 Gigabit Port
<b>PoE Port</b>	8 PoE Ports	16 PoE Ports
<b>Dimensions</b>	14.7 × 12.8 × 1.7 in. (373.4 × 325.1 × 43.2 mm)	14.7 × 12.8 × 1.7 in. (373.4 × 325.1 × 43.2 mm)
<b>Power</b>	100-240 VAC, 130 W Max. PoE	100-240 VAC, 130 W Max. PoE
<b>System Enhancement</b>	Adds Analytics by NVR	Adds Analytics by NVR



**R52-8PA**



**R52-16PA**



**R54-32PA**



**R54-32NA**

Series	R5 Mainstream Series NVRs			
<b>Key Features</b>	8CH 8K LumiSearch NVR LumiPower	16CH 8K LumiSearch NVR LumiPower	32CH 8K LumiSearch NVR LumiPower	32CH 8K LumiSearch NVR
<b>Video Compression</b>	H.265, H.264, MJPEG	H.265, H.264, MJPEG	H.265, H.264, MJPEG	H.265, H.264, MJPEG
<b>IP Video Inputs</b>	8CH	16CH	32CH	32CH
<b>Max. Input/Record Bandwidth</b>	256 Mbps	400 Mbps	400 Mbps	400 Mbps
<b>Display Output</b>	HDMI (Max. 4K), VGA (Max. 1080p)	HDMI (Max. 4K), VGA (Max. 1080p)	HDMI (Max. 4K), VGA (Max. 1080p)	HDMI (Max. 4K), VGA (Max. 1080p)
<b>Maximum HDD Capacity</b>	Up to 32 TB Total (2 x 16 TB per drive)	Up to 32 TB Total (2 x 16TB per drive)	Up to 64 TB Total (4 x 16 TB per Drive)	Up to 64 TB Total (4 x 16 TB per Drive)
<b>eSATA/Mini SAS</b>	-	-	1 eSATA Port	1 eSATA Port
<b>Audio In/Out</b>	1/1	1/1	1/2	1/2
<b>Alarm In/Out</b>	4/2	4/2	16/6	16/6
<b>Ethernet Port</b>	1 Gigabit Port	1 Gigabit Port	1 Gigabit Port	2 Gigabit Ports
<b>PoE Port</b>	8 PoE Ports (Enhanced on Ports 1-8 for LumiPower-enabled cameras)	16 PoE Ports (Enhanced on Ports 1-8 for LumiPower-enabled cameras)	24 PoE Ports (Enhanced on Ports 1-8 for LumiPower-enabled cameras)	-
<b>Dimensions</b>	14.7 × 12.8 × 1.7 in. (373.4 × 325.1 × 43.2 mm)	14.7 × 12.8 × 1.7 in. (373.4 × 325.1 × 43.2 mm)	17.4 × 16.3 × 2.7 in. (442.0 × 414.0 × 68.6 mm)	17.4 × 16.3 × 2.7 in. (442.0 × 414.0 × 68.6 mm)
<b>Power</b>	100-240 V, 130 W Max. PoE	100-240 V, 130 W Max. PoE	100-240 V, 210 W Max. PoE	100-240 V, < 13 W
<b>LumiCloud</b>				

ACCESS CONTROL

TRANSMISSION

ACCESSORIES

LUMIGUARDIAN


**R68-32NA****R68-64NA****R68-XNA**

Series	R6 Extreme Series NVRs		
<b>Key Features</b>	32CH 8K LumiSearch NVR LumiAnalytics by Recorder	64CH 8K LumiSearch NVR LumiAnalytics by Recorder	128CH 8K LumiSearch NVR LumiAnalytics by Recorder
<b>Video Compression</b>	H.265, H.264, MJPEG	H.265, H.264, MJPEG	H.265, H.264, MJPEG
<b>IP Video Inputs</b>	32CH	64CH	128CH
<b>Max Input/ Record Bandwidth</b>	1400 Mbps	1400 Mbps	1400 Mbps
<b>Display Output</b>	HDMI (Max. 8K), VGA (Max. 1080p)	HDMI (Max. 8K), VGA (Max. 1080p)	HDMI (Max. 8K), VGA (Max. 1080p)
<b>Maximum HDD Capacity</b>	Up to 160 TB Total (8 x 20 TB per Drive)	Up to 160 TB Total (8 x 20 TB per Drive)	Up to 160 TB Total (8 x 20 TB per Drive)
<b>eSATA/Mini SAS</b>	1 eSATA Port	1 eSATA Port	1 eSATA Port
<b>Audio In/Out</b>	1/2	1/2	1/2
<b>Alarm In/Out</b>	16/8	16/8	16/8
<b>Ethernet Port</b>	2 x 2.5 Gigabit Ports	2 x 2.5 Gigabit Ports	2 x 2.5 Gigabit Ports
<b>PoE Port</b>	-	-	-
<b>Dimensions</b>	17.5 × 18.7 × 3.7 in. (444.5 × 475.0 × 94.0 mm)	17.5 × 18.7 × 3.7 in. (444.5 × 475.0 × 94.0 mm)	17.5 × 18.7 × 3.7 in. (444.5 × 475.0 × 94.0 mm)
<b>Power</b>	100–240 VAC, 50/60 Hz	100–240 VAC, 50/60 Hz	100–240 VAC, 50/60 Hz
<b>System Enhancement</b>	LumiSearch, LumiAnalytics technology, & other features such as Dual NIC and RAID	LumiSearch, LumiAnalytics technology, & other features such as Dual NIC and RAID	LumiSearch, LumiAnalytics technology, & other features such as Dual NIC and RAID

# 05 Kits



**K54-4L1A2****K56-8L1A2****K5T-16L2A4**

Series	LumiLuxLite 5MP Network Kits		
<b>Included NVR</b>	R31-4PA2	R31-8PA2	R32-16PA4
<b>Included Cameras</b>	N3T-5KA2	N3T-5KA2	N3T-5KA2
<b>Number of Cameras</b>	4	6	12
<b>Camera Resolution (Kit Cameras)</b>	5MP	5MP	5MP
<b>Camera Illumination Type</b>	LumiLuxLite	LumiLuxLite	LumiLuxLite
<b>Lens</b>	2.8 mm Fixed	2.8 mm Fixed	2.8 mm Fixed
<b>NVR Channels</b>	4	8	16
<b>Preinstalled Storage (Surveillance HDD)</b>	2 TB	2 TB	4 TB
<b>PoE Ports</b>	4	8	16
<b>Supported Camera Analytics on NVR</b>	iMD	iMD	iMD
<b>Camera Audio (Built-in Mic &amp; Speaker)</b>	Built-in Microphone, Built-in Speaker	Built-in Microphone, Built-in Speaker	Built-in Microphone, Built-in Speaker
<b>Camera Protection Rating (IP)</b>	IP66	IP66	IP66
<b>Camera Operating Temperature</b>	-22 °F to 140 °F (-30 °C to 60 °C)	-22 °F to 140 °F (-30 °C to 60 °C)	-22 °F to 140 °F (-30 °C to 60 °C)
<b>NVR Power Supply</b>	48 VDC/2 A	48 VDC/2 A	100-240 VAC
<b>NVR Max Bandwidth</b>	80 Mbps	80 Mbps	160 Mbps
<b>LumiCloud</b>			



**K5T-16D2A4**  
(Coming Soon)



**K56-8D1A2**  
(Coming Soon)



**K54-4D1A2**  
(Coming Soon)

ACCESS CONTROL



TRANSMISSION

ACCESSORIES

LUMIGUARDIAN

Series	K5 Deterrent Kit		
Included Cameras	N3T-5DA2	N3T-5DA2	N3T-5DA2
Camera Illumination Type	LumiDeterrent	LumiDeterrent	LumiDeterrent
Key Features	16CH 5MP LumiDeterrent IP Kit	8CH 5MP LumiDeterrent IP Kit	4CH 5MP LumiDeterrent IP Kit
Max. Resolution	5MP	5MP	5MP
Number of Cameras	12	6	4
Number of Channels	16CH	8CH	4CH
Camera Function	LumiDeterrent	LumiDeterrent	LumiDeterrent
HDD No.	2 HDD	1 HDD	1 HDD
HDD Size	4 TB	2 TB	2 TB
Image Sensor	1/2.7-in. CMOS	1/2.7-in. CMOS	1/2.7-in. CMOS
Focal Length	2.8 mm	2.8 mm	2.8 mm
Min. Illumination	Color: 0.01 Lux at F1.6 0 Lux With Illuminator On	Color: 0.01 Lux at F1.6 0 Lux With Illuminator On	Color: 0.01 Lux at F1.6 0 Lux With Illuminator On
Max. IR Distance	98 ft (30 m)	98 ft (30 m)	98 ft (30 m)
Max. White-light Distance	66 ft (20 m)	66 ft (20 m)	66 ft (20 m)
iMD	Yes	Yes	Yes
VCA / VCA+	Intrusion Only	Intrusion Only	Intrusion Only
Audio In/Out	Built-in Microphone, Built-in Speaker	Built-in Microphone, Built-in Speaker	Built-in Microphone, Built-in Speaker
Alarm In/Out	-	-	-
Memory Slot	Max. 128 GB	Max. 128 GB	Max. 128 GB
Protection Rating	IP66	IP66	IP66
Operating Temperature	-22 °F to 140 °F (-30 °C to 60 °C)	-22 °F to 140 °F (-30 °C to 60 °C)	-22 °F to 140 °F (-30 °C to 60 °C)
Power	PoE, 12 VDC	PoE, 12 VDC	PoE, 12 VDC

**K86-8B2A4****K8T-16B2A4**

Series	LumiLightBand 8MP Network Kits	
<b>Included NVR</b>	R32-8PA4	R32-16PA4
<b>Included Cameras</b>	N3T-8BA2	N3T-8BA2
<b>Number of Cameras</b>	6	12
<b>Camera Resolution (Kit Cameras)</b>	8MP	8MP
<b>Camera Illumination Type</b>	LumiLightBand	LumiLightBand
<b>Lens</b>	2.8 mm Fixed	2.8 mm Fixed
<b>NVR Channels</b>	8	16
<b>Preinstalled Storage (Surveillance HDD)</b>	4 TB	4 TB
<b>PoE Ports</b>	8	16
<b>Supported Camera Analytics on NVR</b>	iMD and VCA (Line Crossing, Intrusion)	iMD and VCA (Line Crossing, Intrusion)
<b>Camera Protection Rating (IP)</b>	IP66	IP66
<b>Camera Operating Temperature</b>	-22 °F to 140 °F (-30 °C to 60 °C)	-22 °F to 140 °F (-30 °C to 60 °C)
<b>NVR Power Supply</b>	100-240 VAC	100-240V AC
<b>NVR Max. Bandwidth</b>	160 Mbps	160 Mbps
<b>LumiCloud</b>		



### DW401-CW01 (Coming Soon)

Series	Video Doorbell Kit	
<b>Image Sensor</b>	1/3-in. CMOS	-
<b>Max. Resolution</b>	4MP (2560 × 1440) at 15 fps	-
<b>Focal Length</b>	Fixed 2.3 mm at F2.2	-
<b>Max. IR Distance</b>	33 ft (10 m)	-
<b>iMD</b>	iMD for Human and Vehicle	-
<b>Built-in Microphone</b>	Support	-
<b>Built-in Speaker</b>	Support	Support
<b>Wireless Communication</b>	2.4G/5G Hz Dual-Band Wi-Fi, Bluetooth	2.4G
<b>Memory Slot</b>	Max. 256 GB	-
<b>Protection Rating</b>	IP65	-
<b>Operating Environment</b>	-4 °F to 131 °F (-25 °C to 55 °C) < 95% (RH), Non-Condensing	14 °F to 113 °F (-10 °C to 45 °C) < 20% to 95% (RH), Non-Condensing
<b>Power Supply</b>	USB (5 VDC ± 5%, 2 A) or Binding Post Power Supply (10–24 VDC/14–24 VAC, 1.0 A)	100–240 VAC 50/60 Hz
<b>Dimensions</b>	5.3 × 1.8 × 0.9 in. (134.6 × 45.7 × 22.9 mm)	3.7 × 2.0 × 2.0 in. (94.0 × 50.8 × 50.8 mm)

ACCESS CONTROL

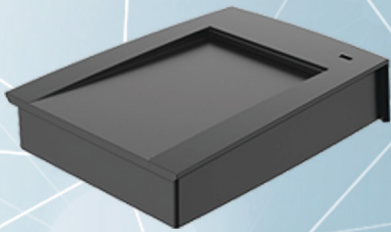
TRANSMISSION

ACCESSORIES

LUMIGUARDIAN

06

# Access Control





C-2PA



C-F4A



C-4MA

Series	Web Access Controller	Facial Recognition Terminal	4-Door Access Controller
<b>Doors Managed</b>	Up to 30 Doors With Sub-Controllers	1 Door	4 Doors
<b>User Capacity</b>	1,000 Users	6,000 Users	100,000 Users
<b>Card Capacity</b>	5,000 Cards	10,000 Cards	100,000 Cards
<b>Bluetooth Capacity</b>	Up to 5,000 Bluetooth Credentials (Max. 5 Per User)	-	-
<b>Record Capacity</b>	300,000 Events	300,000 Events	500,000 Events
<b>Verification Methods</b>	Card, PIN, Bluetooth Credential	Card, PIN, Face Recognition	Card, PIN, Fingerprint
<b>Protection Level</b>	IK06	IP65	IP65
<b>Communication Protocols</b>	RS-485, Wiegand, TCP/IP	RS-485, Wiegand, TCP/IP	RS-485, Wiegand, TCP/IP
<b>PoE Support</b>	Yes (Standard PoE)	Yes (Standard PoE)	-
<b>Power Supply</b>	12 VDC, PoE	12 VDC, PoE	Switching Power Supply (AC 100-240 V, 4 A to DC 12 V, 12.5 A)
<b>Built-In Server</b>	Yes, Web-Centric Configuration	Yes, Web-Centric Configuration	Yes, Web-Centric Configuration
<b>Alarm Input/Output</b>	2 Input, 2 Output	1 Input, 1 Output	5 Input, 4 Output
<b>Real-Time Monitoring</b>	Supported via LumiViewer Mobile App and LumiCloud	Supported via LumiViewer Mobile App	Supported via LumiViewer Mobile App
<b>Operating Environment</b>	Indoor	Indoor and Outdoor	Indoor
<b>Dimensions</b>	7.3 × 7.3 × 2.3 in. (185.4 × 185.4 × 58.4 mm)	7.1 × 3.6 × 1.1 in. (180.3 × 91.4 × 27.9 mm)	15.7 × 10.3 × 3.3 in. (398.8 × 261.6 × 83.8 mm)
<b>Mounting</b>	Surface Mount or DIN-Rail Mount	86 mm or Single-Gang Junction Box, Surface Mount, or Wall Mount	Surface Mount
<b>LumiCloud</b>		-	-



RD1PM



RD1BN

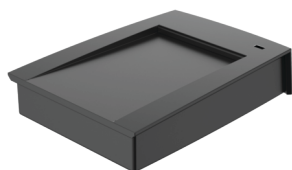


RD1PN



RD1CW

Series	Vandal-proof Access Reader	Bluetooth Access Reader	Mullion Keypad Access Reader	Waterproof Access Reader
<b>Card Type</b>	MIFARE (IC Card)	MIFARE (IC Card), Bluetooth	MIFARE (IC Card)	MIFARE (IC Card)
<b>Bluetooth Support</b>	No	Yes	No	No
<b>Verification Methods</b>	Card, PIN	Card, Bluetooth Credential	Card, PIN	Card
<b>Protection Level</b>	IK08	IP66	IP66	IP66
<b>Communication Protocols</b>	RS-485, Wiegand	RS-485, Wiegand	RS-485, Wiegand	RS-485, Wiegand
<b>Card Reading Distance</b>	Up to 1.2 in (3.5 cm)	Up to 2.0 in (5.1 cm)	Up to 2.0 in (5.1 mm)	Up to 2.0 in (5.1 cm)
<b>Bluetooth Range</b>	-	Short: 1.0 ft (0.3 m) Medium: 7.0 ft (2.1 m) Long: 33.0 ft (10.1 m)	-	-
<b>Mullion Mount</b>	No	Yes	Yes	No
<b>Operating Temperature</b>	14 °F to 131 °F (-10 °C to 55 °C)	-22 °F to 158 °F (-30 °C to 70 °C)	-22 °F to 158 °F (-30 °C to 70 °C)	-22 °F to 158 °F (-30 °C to 70 °C)
<b>Operating Environment</b>	Indoor	Indoor and Outdoor	Indoor and Outdoor	Indoor and Outdoor
<b>Dimensions</b>	4.3 x 3.4 x 1.0 in. (109.2 x 86.4 x 25.4 mm)	5.3 x 1.6 x 0.6 in. (134.6 x 40.6 x 15.2 mm)	5.3 x 1.6 x 0.6 in. (134.6 x 40.6 x 15.2 mm)	4.8 x 3.8 x 0.6 in. (121.9 x 96.5 x 15.2 mm)

**ED1CU****E-CS50****E-FS50**

Series	Credential Enrollment and Identification Accessories		
<b>Product Type</b>	Card Issuer	MIFARE NFC IC Card	Mifare NFC IC Key Fob
<b>Model</b>	ED1CU	E-CS50	E-FS50
<b>Standard</b>	MIFARE 13.56 MHz	MIFARE 13.56 MHz	MIFARE 13.56 MHz
<b>Card Reading Frequency</b>	13.56 MHz	13.56 MHz	13.56 MHz
<b>Connection Type</b>	USB 2.0 Plug and Play	-	-
<b>Range</b>	-	Up to 3.9 in (10 cm)	Up to 3.9 in (10 cm)
<b>Operating Temperature</b>	-22 °F to 140 °F (-30 °C to 60 °C)	-	-
<b>Operating Environment</b>	Indoor	Indoor / Outdoor	Indoor / Outdoor
<b>Dimensions</b>	4.13 × 2.95 × 0.79 in (104.9 × 74.9 × 20.1 mm)	3.39 × 2.13 × 0.03 in (86.1 × 54.1 × 0.8 mm)	1.40 × 1.10 × 0.20 in (35.6 × 27.9 × 5.1 mm)
<b>Material</b>	ABS Plastic	PVC	ABS Plastic
<b>Packaging</b>	1 Unit	20 Cards per Bag	20 Key Fobs per Bag

07

# Transmission



**SML-6GPA****SML-10GPA****SML-20GPA****SML-28GPA**

<b>Description</b>	4-Port PoE+ Gigabit Managed Cloud Switch	8-Port PoE++ Gigabit Managed Cloud Switch	16-Port PoE++ Gigabit Managed Cloud Switch	24-Port PoE++ Gigabit Managed Cloud Switch
<b>Port Configuration</b>	4 PoE Ports + 2 RJ-45 Uplink Ports	8 PoE Ports + 2 RJ-45 Uplink Ports	16 PoE Ports + 4 Uplink Ports (2 SFP, 2 RJ-45)	24 PoE Ports + 4 Uplink Ports (2 SFP, 2 RJ-45)
<b>SFP Optical Ports</b>	-	-	2 x 100/1000 Mbps	2 x 100/1000 Mbps
<b>PoE Standard</b>	IEEE802.3af, IEEE802.3at (PoE+)	IEEE802.3af, IEEE802.3at (PoE+), IEEE802.3bt (PoE++)	IEEE802.3af, IEEE802.3at (PoE+), IEEE802.3bt (PoE++)	IEEE802.3af, IEEE802.3at (PoE+), IEEE802.3bt (PoE++)
<b>PoE Budget</b>	60 W	110 W	240 W	375 W
<b>Switching Capacity</b>	12 Gbps	20 Gbps	40 Gbps	56 Gbps
<b>Packet Forwarding Rate</b>	8.9 Mpps	14.8 Mpps	29.8 Mpps	42 Mpps
<b>Packet Buffer Size</b>	4.1 Mbit	4.1 Mbit	4.1 Mbit	4.1 Mbit
<b>MAC Table Size</b>	8,000	8,000	8,000	8,000
<b>VLAN Number</b>	32	32	32	32
<b>Management</b>	Web/Cloud-Based	Web/Cloud-Based	Web/Cloud-Based	Web/Cloud-Based
<b>Lightning Protection</b>	4 kV/2 kV	4 kV/2 kV	4 kV/2 kV	4 kV/2 kV
<b>Operating Temperature</b>	14 °F to 131 °F (-10 °C to 55 °C)	14 °F to 131 °F (-10 °C to 55 °C)	14 °F to 131 °F (-10 °C to 55 °C)	14 °F to 131 °F (-10 °C to 55 °C)
<b>Dimensions</b>	5.1 × 3.5 × 1.0 in. (129.5 × 88.9 × 25.4 mm)	7.5 × 4.2 × 1.2 in. (190.5 × 106.7 × 30.5 mm)	17.3 × 8.7 × 1.7 in. (439.4 × 221.0 × 43.2 mm)	17.3 × 8.7 × 1.7 in. (439.4 × 221.0 × 43.2 mm)
<b>LumiPoE</b>	PoE Watchdog, Long Distance PoE, Perpetual PoE, PoE Priority Management			
<b>LumiCloud</b>				

Note: When long-distance PoE is enabled, port speed is limited to 10 Mbps.



	SUL-10MLA
<b>Description</b>	8-Port LumiPower Unmanaged Megabit Switch (PoE++)
<b>Port Configuration</b>	8 PoE Ports + 2 Uplink Ports (1 SFP, 1 RJ-45)
<b>SFP Optical Ports</b>	1 x 100/1000 Mbps
<b>PoE Standard</b>	IEEE802.3af IEEE802.3at IEEE802.3bt (PoE++)
<b>PoE Budget</b>	120 W
<b>Switching Capacity</b>	8.8 Gbps
<b>Packet Forwarding Rate</b>	5.4 Mpps
<b>Packet Buffer Size</b>	2.8 Mbit
<b>MAC Table Size</b>	8,000
<b>VLAN Number</b>	-
<b>Management</b>	-
<b>Lightning Protection</b>	4 kV/2 kV
<b>Operating Temperature</b>	-22 °F to 149 °F (-30 °C to 65 °C)
<b>Dimensions</b>	6.3 in. × 4.4 in. × 1.7 in. (159.8 mm × 110.4 mm × 42.0 mm)
<b>LumiPower</b>	Support

**WB3-900****WB5-900**

Series	Wireless Bridge	
<b>Description</b>	5 GHz Outdoor Wireless Bridge for Mid-Range Transmission	5 GHz Outdoor Wireless Bridge for Mid-Range Transmission
<b>Wireless Standard</b>	IEEE 802.11a/-c	IEEE 802.11a/-c
<b>Frequency Band</b>	5.8 GHz	5.8 GHz
<b>Max Throughput</b>	Up to 900 Mbps	Up to 900 Mbps
<b>Maximum Range (Line-of-Sight)</b>	Up to 1.8 miles (3 km)	Up to 3.1 miles (5 km)
<b>Ethernet Interface</b>	1× Gigabit Ethernet + 1× Fast Ethernet	1× Gigabit Ethernet + 1× Fast Ethernet
<b>Antenna Design</b>	Integrated 14 dBi Directional Panel Antenna	Integrated 14 dBi Directional Panel Antenna
<b>Power Supply</b>	24 V PoE or 12 VDC	24 V PoE or 12 VDC
<b>Network Topology</b>	Point-to-Point or Point-to-Multipoint (Up to 8 Nodes)	Point-to-Point or Point-to-Multipoint (Up to 8 Nodes)
<b>Enclosure Rating</b>	IP65 Weather-Resistant Outdoor Housing	IP65 Weather-Resistant Outdoor Housing
<b>Operating Temperature</b>	-22 °F to 131 °F (-30 °C to 55 °C)	-22 °F to 131 °F (-30 °C to 55 °C)
<b>Dimensions</b>	10.2 × 3.5 × 2.2 in. (258.0 × 90.0 × 56.0 mm)	10.2 × 3.5 × 2.2 in. (258.0 × 90.0 × 56.0 mm)

**APC630****SAL-1LAB**

Series	Wireless Access Point
<b>Description</b>	Wi-Fi 6 Dual-Band Ceiling-Mount Access Point
<b>Wireless Standard</b>	IEEE 802.11 a/b/g/-c/ax (Wi-Fi 6)
<b>Frequency Band</b>	2.4 GHz + 5 GHz Dual-Band
<b>Max Throughput</b>	Up to 3.0 Gbps Combined Wireless Rate
<b>Client Capacity</b>	Supports up to 128 Concurrent Users
<b>Ethernet Interface</b>	1× Gigabit Ethernet With PoE
<b>Antenna Design</b>	Integrated Dual-Band MIMO Antennas
<b>Power Input</b>	802.3af/at PoE or 12 VDC
<b>Operating Modes</b>	Router, Access Point, Mesh
<b>Management</b>	Local Web Interface
<b>Surge Protection</b>	Integrated Over-Voltage and Over-Current Protection
<b>Operating Temperature</b>	14 °F to 113 °F (-10 °C to 45 °C)
<b>Dimensions</b>	6.9 × 1.7 in. (Ø 175.0 mm × 42.0 mm)

Series	EoC Kit
<b>Type:</b>	PoE Ethernet Over Coax Extender Kit
<b>Cable</b>	RG59/RG6 Coax
<b>Max Distance</b>	Up to 3,280 ft (1,000 m)
<b>Ethernet Speed</b>	10 / 100 Mbps (Distance Dependent)
<b>PoE Support</b>	IEEE 802.3af/802.3at

# 08 Analog



**X52-16KA**

Series	DVR
<b>Key Features</b>	16CH 4K AI DVR
<b>Video Compression</b>	H.265+, H.265, H.264+, H264
<b>Analog Video Inputs</b>	16CH
<b>IP Video Inputs</b>	16CH
<b>Max. Input/Record Bandwidth</b>	128 Mbps
<b>Display Output</b>	HDMI (Max. 4K), VGA (Max. 1080p)
<b>Max. HDD Capacity</b>	U to 20 TB Total (2 x 10 TB per Drive)
<b>Audio In/Out</b>	4/1
<b>Alarm In/Out</b>	16/3
<b>Ethernet Port</b>	1 Gigabit Port
<b>Power</b>	12 VDC



**A3T-2LA2**  
(Coming Soon)



**A3T-5LA2**  
(Coming Soon)



**A3T-2LAV**  
(Coming Soon)

Series	A3 Dual-illumination Series		
<b>Image Sensor</b>	1/3.2-in. CMOS	1/2.7-in. CMOS	1/28.-in. CMOS
<b>Max. Resolution</b>	2MP (1920 x 1080)	5MP (2880 x 1620)	2MP (1920 x 1080)
<b>Focal Length</b>	2.8 mm	2.8 mm	2.7 mm to 12 mm
<b>Min. Illumination</b>	Color: 0.02 Lux at F2.0 B/W: 0.002 Lux at F2.0 0 Lux With Illuminator On	Color: 0.02 Lux at F2.0 B/W: 0.002 Lux at F2.0 0 Lux With Illuminator On	Color: 0.02 Lux at F1.5 B/W: 0.002 Lux at F1.5 0 Lux With Illuminator On
<b>Max. IR Distance</b>	98 ft (30 m)	98 ft (30 m)	TBD
<b>Max. White-light Distance</b>	98 ft (30 m)	98 ft (30 m)	TBD
<b>Audio In/Out</b>	Built-in Microphone	Built-in Microphone	Built-in Microphone
<b>Alarm In/Out</b>	-	-	-
<b>Video Choices</b>	CVI/TVI/AHD/CVBS	CVI/TVI/AHD/CVBS	CVI/TVI/AHD/CVBS
<b>Protection Rating</b>	IP67	IP67	IP67
<b>Operating Temperature</b>	-40 °F to 140 °F (-40 °C to 60 °C)	-40 °F to 140 °F (-40 °C to 60 °C)	-22 °F to 140 °F (-30 °C to 60 °C)
<b>Power</b>	12 VDC	12 VDC	24 VAC, 12 VDC

09

# Accessories



**MODEL****S-1515A**

IP Speaker

-Power Consumption: 15 W

-Max. Sound Pressure Level: 108 db

-SNR:  $\geq 75$  db

-Built-In Microphone

- Max. Connection Distance: 328 ft (100 m)

- Aviation Aluminum Material

**Pole & Corner Mounts****Accessory Image****Part Number****Description**

LUM-P02

Pole Mount Bracket



LUM-P01

Pole Mount Bracket for N3/N5/N9/P4/P5 Series Cameras



LUM-C01

Corner Mount Bracket

**Wall Mount Brackets****Accessory Image****Part Number****Description**

LUM-W01

Wall Mount Bracket for N5D/N5T/N3T Cameras



LUM-W02

Wall Mount Bracket for N5D/N5T/N3T/P45/P54/P55 Cameras



LUM-W06

Wall Mount Bracket for P44 PTZ

## Wall Mount Brackets

Accessory Image	Part Number	Description
-----------------	-------------	-------------



LUM-W05

Wall Mount Bracket for Wedge Dome Cameras



LUM-W04

Wall Mount Bracket for N5T/N5P Cameras



LUM-W03

Wall Mount Bracket for N9F Cameras



LUM-W04B

Black Wall Mount Bracket for N5T/N5P Cameras



P54-W01

Wall Mount Bracket for P54 PTZ



LUM-W51

Wall Mount for N9 Specialty Stitched Multi-Sensor Camera



LUM-W09

Wall Mount for N9P-4RA2



LUM-W10

Wall Mount for N2T-4RA2, N3/N5 Mini Turret cameras



LUM-R01

Parapet mount for PTZ



LUM-W01B

Wall mount for N3T-4LA2B camera

## Ceiling Mounts

Accessory Image	Part Number	Description
-----------------	-------------	-------------



LUM-E01

Ceiling Mount Bracket for N5D/N5T/N3T/N5P Cameras



LUM-E02

Ceiling Mount Bracket for N9F/P44/P45/P54/P55 Cameras



LUM-M01

In-ceiling Mount Bracket for N5D Dome



LUM-E04

Wall and Ceiling Mount Bracket for N9P-4RA2



LUM-E05

Ceiling Mount Bracket

LUMICLOUD

LUMICENTER

NETWORK CAMERA

NETWORK VIDEO RECORDER

KITS

## Junction Boxes

Accessory Image	Part Number	Description
-----------------	-------------	-------------



LUM-J01

Junction Box for N5B Cameras

LUM-J02

Junction Box for N5D/N5T/N3T Cameras

LUM-J05

Junction Box for N3W-4LA2

LUM-J06

Junction Box for N3T-5KA2

LUM-J51

Waterproof Junction Box for N2 Cameras

LUM-J03

Junction Box for N9F Cameras

LUM-J04

Junction Box for N5T/N5P Cameras

LUM-J04B

Black Junction Box for N5T/N5P Cameras

LUM-J09

Junction Box for N9P-4RA2

LUM-J10

Junction Box for PTZ

LUM-CJ11

Waterproof Junction Box for N3/N4/N5 Turret Cameras

LUM-CJ11B

Black Waterproof Junction box for N3/N4/N5 Turret Cameras

ACCESS CONTROL

TRANSMISSION

ANALOG

ACCESSORIES

LUMIGUARDIAN

## Adapter

Accessory Image	Part Number	Description
-----------------	-------------	-------------



LUM-A01

Adapter Plate for N5D/N5T/N3T Cameras



LUM-A02

Adapter Plate for N5T/N5P Cameras



LUM-A03

Adapter Plate for N9F Cameras



LUM-A07

Adapter Plate for P44 PTZ



LUM-A08

Mount Adapter for N5D/N5T/N3T Cameras



LUM-A06

Adapter Plate for Wedge Dome

## Power & Other Accessories

Accessory Image	Part Number	Description
-----------------	-------------	-------------



LUM-D01

Power Box for P55/P54/P45 Series PTZ



LUM-A04

Water Joint for N5B Junction Box



LUM-B01

Smoked Replacement Bubble (3.4-in.) –  
Compatible with Dome Housing Style 1



P44-B01

Smoked Replacement Bubble (5.2-in.) –  
Compatible with PTZ Housing Style 2



P55-B01

Smoked Replacement Bubble (5.5-in.) – For P5C-  
4SA32 PTZ Housing



LUM-J10

Junction Box for PTZ



LUM-R01

Parapet mount

LUMICLOUD

LUMICENTER

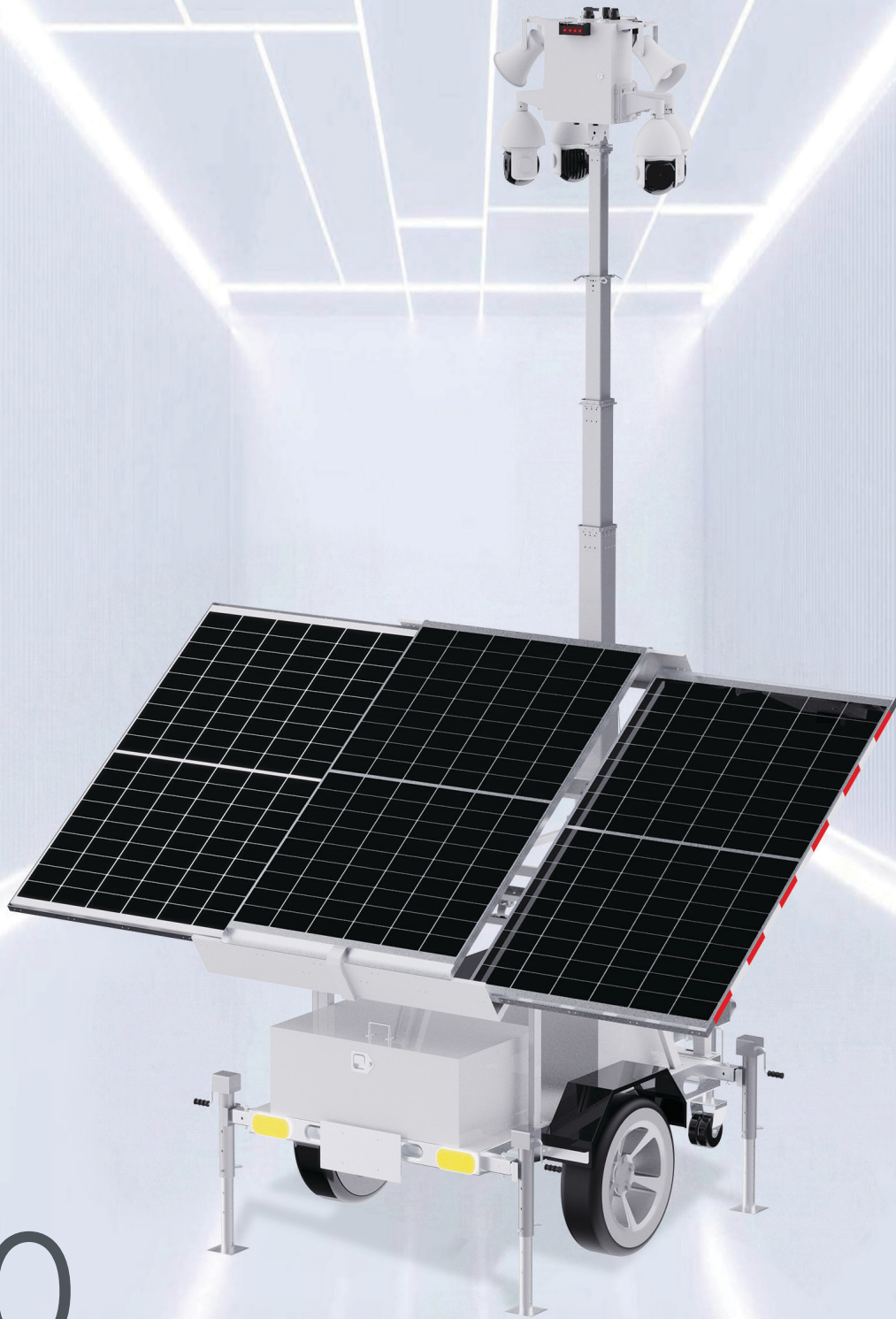
NETWORK CAMERA

NETWORK VIDEO  
RECORDER

KITS

## Need help? Visit the Luminy's Accessory Selector.

Use our [Online Selector Tool](#) to find the right accessories for your system on the official Luminy's website.



10

**LumiGuardian**

# LumiGuardian Solar Trailer Overview

## LumiGuardian Solar Trailer Overview

- ✓ Integrated Cloud-Based Recording with LumiCloud\*
- ✓ One Year LumiCloud Subscription License
- ✓ One Month Subscription of 4G Data 100GB
- ✓ GPS Tracking\*\*
- ✓ 4G LTE communication with built-in eSIM card\*\*\*
- ✓ Autonomous Power for 7 to 10 Days Without Sun\*\*\*\*
- ✓ One-Person Fast Assembly
- ✓ Four (4) 12.8 V Lithium Iron Phosphate Batteries
- ✓ Dual Charging: Solar Power or AC Charging
- ✓ Lockable and Secure Design
- ✓ C5-I Corrosion Protection
- ✓ Level 12 (Up to 73 mph) on the Beaufort Wind Scale
- ✓ IP67 Ingress Protection
- ✓ Department of Transportation (DoT) Approved
- ✓ NDAA Compliant

## Remote monitoring and management platform for LumiGuardian:



Real-time Monitoring



Event-based Video Recording



System and Device Health Monitoring



Alerts and Notifications



Data and Reporting

### Trailer

Three (3) Years

### Solar Panels

Thirty (30) Years

\*LumiCloud platform for cloud-based recording is sold separately.

\*\*GPS tracking is only available when using LumiCloud.

\*\*\*Data plan sold separately.

\*\*\*\*Time may vary based on energy consumption.

LumiGuardian (Model TG-113A)

LumiCloud Solar Trailer License (LCL-ST4)

Select the data package that works for your needs. Sold separately.



LUMICLOUD

LUMICENTER

NETWORK CAMERA

NETWORK VIDEO RECORDER

KITS

		Features	Trailer License
License & Subscription	SKU		LCL-ST4
	Subscription Length		1 Year
General Function	Secure Remote Connection		Y
	Device Registration Via QR Code		Y
	Live View		Y
	Playback From Local Storage		Y
	Device Configuration		Y
	Solar Information (Battery/4G Data)		Y
Interactive Management & Monitoring	Device & Site Group Management		Y
	Channel Configuration		Y
	Mapping (With GPS)		Y
Cloud Storage	Event Cloud Storage (30 Days Rolling)		Y
	Permanent Archive (Max. 30 GB)		Y
Event and Alert	System Alert		Y
	Event Alert		Y
	Intelligent Motion Detection (iMD) Event		Y
	Video Content Analysis (VCA) Event		Y
User Function	User Control		Y
	Video/Event Sharing		Y
	Sso (Single Sign-On)		Y
	Audit Logs for Sign-In		Y
	PTZ Control		Y
System Function	Device Online Status		Y
	OTA Firmware Updates		Y
	Software Upgrade		Y
	Health Alerts		Y

# LumiCloud Data Packages

## LumiCloud Cellular Data Subscription

Supports AT&T, Verizon and T-Mobile cellular networks in USA and Puerto Rico.

Supports Rogers, Bell and Telus cellular networks in Canada.



Description	SKU	Country
LumiCloud 4G Data 10GB USA: 30 Day Data Plan	LCL-DATA10GU	USA
LumiCloud 4G Data 100GB USA: 30 Day Data Plan	LCL-DATA100GU	USA
LumiCloud 4G Data 200GB USA: 30 Day Data Plan	LCL-DATA200GU	USA
LumiCloud 4G Data 300GB USA: 30 Day Data Plan	LCL-DATA300GU	USA
LumiCloud 4G Data 1200GB USA: 1 Year Data Plan	LCL-1YDATA1200GU	USA
LumiCloud 4G Data 2400GB USA: 1 Year Data Plan	LCL-1YDATA2400GU	USA
LumiCloud 4G Data 10GB Puerto Rico: 30 Day Data Plan	LCL-DATA10GP	Puerto Rico
LumiCloud 4G Data 100GB Puerto Rico: 30 Day Data Plan	LCL-DATA100GP	Puerto Rico
LumiCloud 4G Data 200GB Puerto Rico: 30 Day Data Plan	LCL-DATA200GP	Puerto Rico
LumiCloud 4G Data 300GB Puerto Rico: 30 Day Data Plan	LCL-DATA300GP	Puerto Rico
LumiCloud 4G Data 1200GB Puerto Rico: 1 Year Data Plan	LCL-1YDATA1200GP	Puerto Rico
LumiCloud 4G Data 2400GB Puerto Rico: 1 Year Data Plan	LCL-1YDATA2400GP	Puerto Rico
LumiCloud 4G Data 10GB Canada: 30 Day Data Plan	LCL-DATA10GC	Canada
LumiCloud 4G Data 100GB Canada: 30 Day Data Plan	LCL-DATA100GC	Canada
LumiCloud 4G Data 200GB Canada: 30 Day Data Plan	LCL-DATA200GC	Canada
LumiCloud 4G Data 300GB Canada: 30 Day Data Plan	LCL-DATA300GC	Canada
LumiCloud 4G Data 1200GB Canada: 1 Year Data Plan	LCL-1YDATA1200GC	Canada
LumiCloud 4G Data 2400GB Canada: 1 Year Data Plan	LCL-1YDATA2400GC	Canada

See the LumiCloud data plan datasheet for more information on limits, stacking, and requirements.

## LumiCloud Features

- Secure Remote Connection
- Add Device via QR Code
- User Roles
- Remote Monitoring & Live Status
- Simplified Configuration Processes
- Comprehensive Reports
- Real-time Network Health Monitoring
- AI Notifications for Events
- Live & Recorded video Playback
- GPS Location & Mapping

# Luminys Systems Corporation

**Luminys Systems Corporation** leads the way in helping businesses build smart, sustainable, and secure ecosystems with integrity. Connected solutions and services offer safety, insight, intelligence, and operational efficiency.

With a focus on ingenuity and exceptional customer support, Luminys delivers future-ready products that adapt to the evolving needs of various industries. As a U.S.-based subsidiary of Foxlink, a global leader in electronics manufacturing, Luminys is trusted by customers and partners worldwide to deliver advanced technology solutions and services shaping a sustainable, smarter future.

**Distributed by:**

## Contact

Tel: (949) 679-7777

Address: 15245 Alton Pkwy, Irvine, CA 92618

Email: [sales@luminyscorp.com](mailto:sales@luminyscorp.com)

Website: <https://www.luminyscorp.com/>



Scan the QR code to join our Luminys MVP Program and unlock exclusive benefits, including special pricing, extended warranties, and priority support. Don't miss out on enhancing your business with our premium solutions.