



CDVI

Security to Access



Product Catalogue

2021
2022

KRYPTO

MOBILE PASS



Biometric



Scan



Touch



Voice



Automatic

The Krypto Mobile-PASS is the perfect tool for any user who wants to use their smartphone as an access card. Simply download the free ATRIUM BT app from the Apple or Google Play Store.

When combined with our high-security KRYPTO controllers and Bluetooth readers, this mobile credential solution offers rock-solid security. Krypto Mobile-PASS, combining simplicity & higher security.



Key Features:

- Use your smartphone as a credential (Apple® or Android®)
- 5 ways to unlock a door: scan, touch, automatic, voice and biometric (fingerprint or facial recognition)
- Compatible with ATRIUM A22K access control system and KRYPTO high security solution Bluetooth reader
- 5 FREE mobile-PASS per site
- Mobile-PASS sold in packs of 25
- No yearly fee / no cloud required
- Free ATRIUM BT app



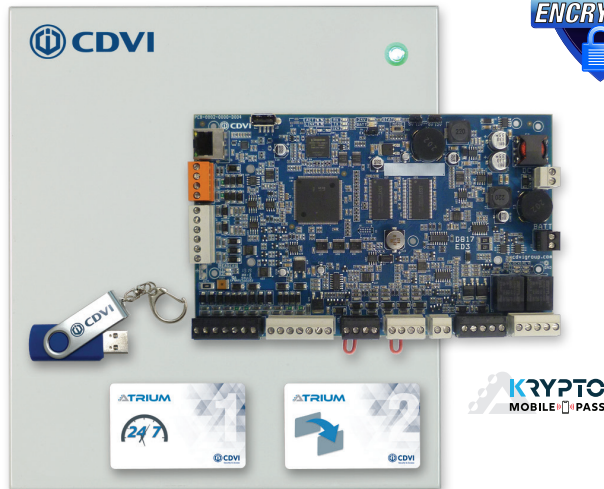
A22K

Encrypted 2-Door / 4-Reader Web-Based IP KRYPTO Controller

The A22K is ATRIUM's encrypted web-based (https) door controller. Use your smartphone, tablet or any web-enabled device to easily manage the system over a secure connection in the office, at home or on the road! ATRIUM's unique and effortless card enrollment mode minimizes system start up and simplifies your life. A factory-installed power supply (A22K) or POE+ Splitter (A22KPOE) makes the A22K an industry leader in cost-efficiency and simplicity. Just plug it into an AC wall outlet to power the unit, readers and door locks.

KRYPTO

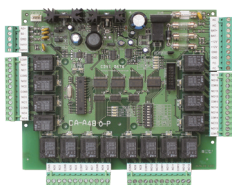
HIGH SECURITY SOLUTION



- Controls 2 doors and 4 readers (Entry/Exit per reader port)
- Now includes 4 operating modes (A22K, A22KEC, ADH10K & AP22K)
- Pre-assembled universal plug-in power supply (120V/240V)
- Also available with pre-assembled PoE+ splitter: A22KPOE
- FREE Management Software & Embedded Web Server (HTTPS)
- Converts the A22K to an elevator controller (A22KEC) by changing is firmware for free (The A22KEC can manage up to 256 floors)
- On-board Ethernet Port with AES 256-bit encryption
- On-board RS485 communication bus, 4000 ft (1220 m)
- Auto-detect expansion modules
- 10,000 users & cards / 25,000 Event Buffer
- 100 holidays / 1,000 Access Levels
- 250 Schedules each supporting up to 100 time periods
- 256 floor levels
- Lock outputs: 2 (750 mA @ 12 VDC/each)
- Relay Outputs: 2 Form C relays (Dry Contact) 5 A at 250 VAC, 7 A @ 125 VAC, 7A @ 30 VDC
- 6 multi-purpose inputs (12 using zone doubling)
- Can control 2 Schlage door handles or 2 Aperio locks using "ADH2K" or "AP2K" operating modes.

CA-A480-A

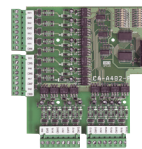
Elevator Controller



- Up to eight CA-A480-A controllers per A22KEC elevator controller
- RS-485 connectivity to the A22KEC up to 4000 ft (1220 m)
- 16 Form C floor control relays (15A/28 VDC, N.C./N.O.)
- 1 Fire control input + 1 Tamper input
- Destination reporting (requires CA-A482-P)
- Backup battery with selectable battery charge current
- On-board 12 VDC power supply
- Fully supervised (tamper, low battery and AC failure) with LED display

CA-A482-P

Destination Reporting Module



- Connects directly onto the CA-A480-A elevator controller
- User must present a valid card to select a floor button.
- 16 floor-selection inputs and LED indicators
- Records Valid and Invalid floor selections
- Power input: 5 VDC
- Current consumption: 28 mA (typical), 108 mA (max)
- DC input activation: 15 VDC (minimum), 165 VDC (max)

AIOM

10-Input/10-Output Module

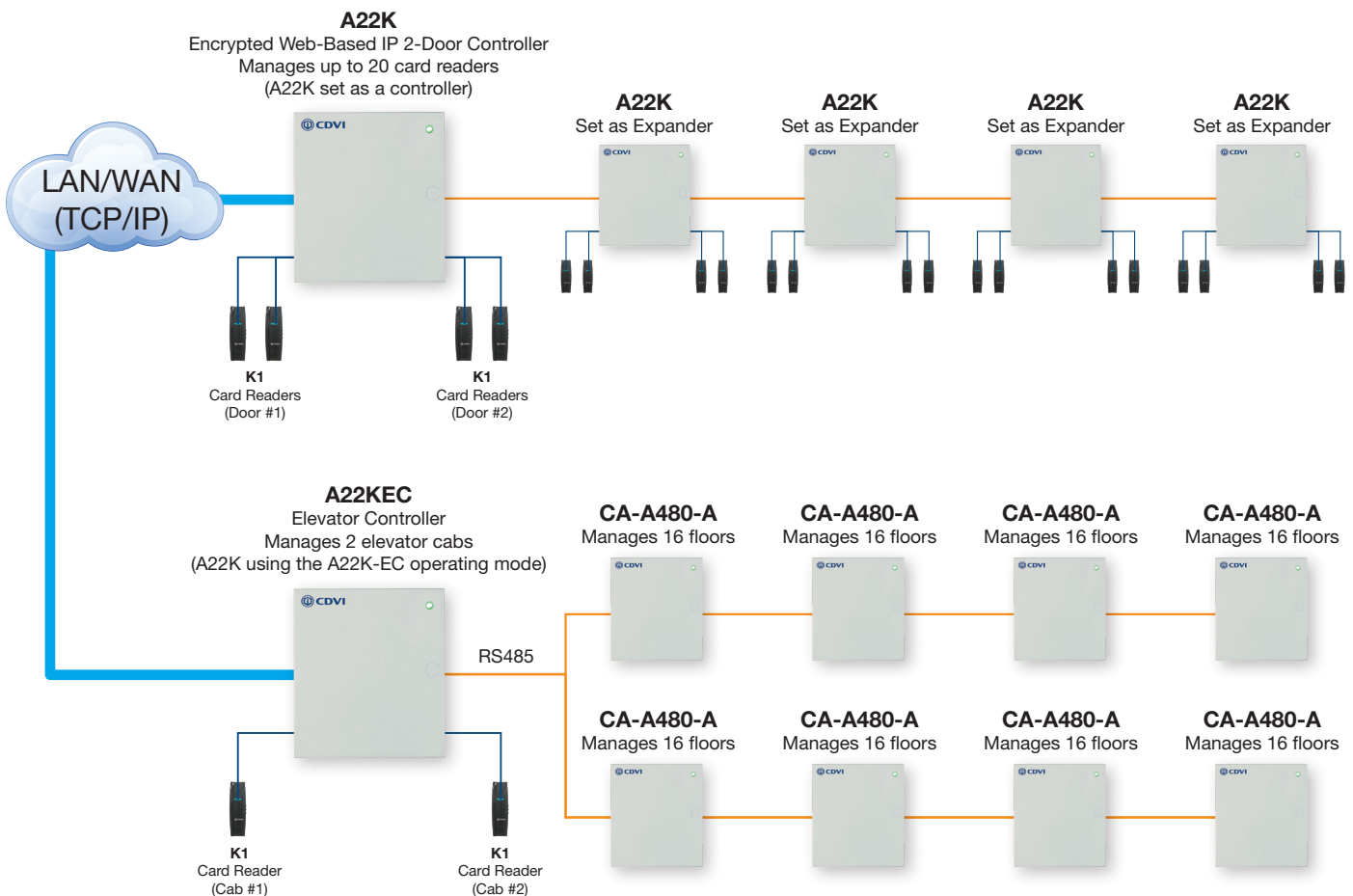


- 10 Inputs (20 using zone doubling technology)
- 10 Outputs
- Auto-detect technology (No jumpers or DIP switches)
- 4000 ft (1220 m) 4 conductor RS485 expansion bus
- Comprehensive LED status indicators

System Overview



Supports any combination of fifty A22K, A22KEC and/or ADH10K controllers for a maximum of 500 doors



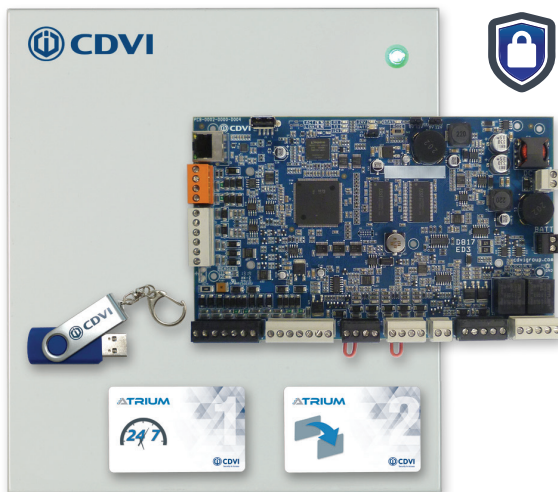
ADH10K

Schlage® & Aperio Door Handle Controller

The ATRIUM ADH10K controller can control up to ten AD300, AD400 and NDE SCHLAGE door handles or 10 of any APERIO locks. ATRIUM multi-account software supports up to 500 door handles per account (site). This is done by using ten ADH10K controllers connected to an IP network. Effortless auto-detect technology identifies the SCHLAGE door handle or the Aperio locks on the communication bus. A pre-assembled universal power supply is included with every ADH10K making this unit an industry leader in efficiency and simplicity.

KRYPTO

HIGH SECURITY SOLUTION



- Controls 10 Schlage AD 300/400, NDE series door handles or 10 Aperio locks
- On-board Ethernet Port with AES 256-bit encryption
- Embedded secure https Web server
- On-board RS485 communication bus, 4000 ft (1220 m)
- Pre-assembled universal plug-in power supply (120V / 240V)
- Auto-detect technology
- 10,000 users
- 10,000 cards
- 25,000 Event Buffer
- 100 holidays
- 1,000 Access Levels
- 250 Schedules each supporting up to 100 time periods
- Comprehensive LED status indicators

- Integrates with:



GWE

ENGAGE™ Gateway



- Capable of managing up to 10 ENGAGE™ enabled devices for a wide range of applications
- Secure AES-256 bit encrypted 2.4 GHz Bluetooth 4.0 communication between Gateway and ENGAGE™ devices

PIM400-485

Schlage Panel Interface Module



- 900 MHz Spread Spectrum RF technology for long range, reliable communication
- Automatic linking to remote wireless access points with 10 channel frequencies to select from enables easy commissioning
- AES-128 bit Encrypted Spread Spectrum transmissions
- AD-Series compatible

Krypto Bluetooth Readers

K1BT

Krypto Bluetooth Reader



- Compatible with ATRIUM A22K controller, ATRIUM BT App and the Krypto Mobile-PASS
- Sealed in epoxy
- FULLY secure RS-485 connection
- Reads 13.56 MHz Mifare Classic and DESFire EV1/EV2
- OSDP-2 compatible
- NFC & Bluetooth
- Up to 2" (5 cm) read range
- Power requirements: 12 VDC

K2

Krypto Bluetooth Reader



- Compatible with ATRIUM A22K controller, ATRIUM BT App and the Krypto Mobile-PASS
- FULLY secure RS-485 connection
- Reads 13.56 MHz Mifare Classic and DESFire EV1/EV2
- OSDP-2 compatible
- NFC & Bluetooth
- Up to 2" (5 cm) read range
- Power requirements: 12 VDC

K3

Krypto Bluetooth Reader & Keypad



- Touch sensitive keypad
- Single gang box fit
- Compatible with ATRIUM A22K controller, ATRIUM BT App and the Krypto Mobile-PASS
- FULLY secure RS-485 connection
- Reads 13.56 MHz Mifare Classic, DESFire EV1/EV2 and Mobile-PASS
- OSDP-2 compatible
- NFC & Bluetooth
- Up to 2" (5 cm) read range
- Power requirements: 12 VDC

K4

Krypto Bluetooth Mullion Reader & Keypad



COMING SOON

- Touch sensitive Keypad
- Compatible with ATRIUM A22K controller, ATRIUM BT App and the Krypto Mobile-PASS
- FULLY secure RS-485 connection
- Reads 13.56 MHz Mifare Classic, DESFire EV1/EV2 and Mobile-PASS
- OSDP-2 compatible
- NFC & Bluetooth
- Up to 2" (5 cm) read range
- Power requirements: 12 VDC

A22K1BT

KRYPTO Mobile-PASS Kit



KRYPTO
HIGH SECURITY SOLUTION

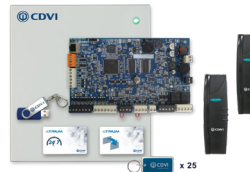


- 1 x A22K Controller
- 2 x K1BT Bluetooth Readers
- 5 x TAG-EV2 (Mifare DESFire EV2)
- 5 x ISO25DTH Dual Technology Cards (DESFire EV2/HID 125 kHz)
- FREE Software

A22K1

KRYPTO High Security 2-Door Kit

KRYPTO
HIGH SECURITY SOLUTION



- 1 x A22K Controller
- 2 x K1 High Security Card Readers
- 25 x Mifare DESFire EV2 Tags
- FREE Software

A22K1BTDS

KRYPTO Mobile-PASS Strike Kit



KRYPTO
HIGH SECURITY SOLUTION

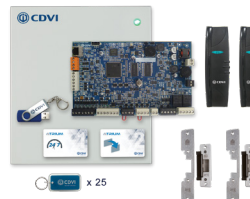


- 1 x A22K Controller
- 2 x K1BT Bluetooth Readers
- 2 x 2400KIT (Universal Stainless Steel Door Strikes)
- 5 x TAG-EV2 (Mifare DESFire EV2)
- 5 x ISO25DTH Dual Technology Cards (DESFire EV2/HID 125 kHz)
- FREE Software

A22K1DS

KRYPTO High Security 2-Door/Strike Kit

KRYPTO
HIGH SECURITY SOLUTION



- 1 x A22K Controller
- 2 x K1 High Security Card Readers
- 2 x 2400KIT (Universal Stainless Steel Door Strikes)
- 25 x Mifare DESFire EV2 Tags
- FREE Software

Licenses

AMC25

ATRIUM Mobile Credential License

KRYPTO
MOBILE PASS



- Contains 25 mobile credentials
- Give users the ability to unlock doors with their phone when using the ATRIUM BT app
- Compatible with a KRYPTO Bluetooth reader only

AFPLAN

ATRIUM Floor Plan Manager License

KRYPTO
HIGH SECURITY SOLUTION



- View door status on a floor plan in real time from any web browser (MAC or PC).
- Activate all door options in real time (locked, unlocked, access granted, etc.)
- Easy to configure (click & drag)
- Supports .jpg or .png file (1Mb max.)
- One Floor Plan Manager per site

AUCS

ATRIUM Unlock Card Source

KRYPTO
HIGH SECURITY SOLUTION



- Unlock other card format to be used within ATRIUM Krypto readers

LDKIT

Lockdown Card Kit



- Quickly close specific doors in your building and still allow access to specific individuals in case of a threat.

K1

KRYPTO High Security Card Reader



KRYPTO

HIGH SECURITY SOLUTION



- Compatible with ATRIUM A22K controller
- FULLY secure RS-485 connection
- Reads 13.56 MHz Mifare Classic and DESFire EV1/EV2
- OSDP-2 compatible
- Up to 2" (5 cm) read range
- Power requirements: 12 VDC

STAR1M

2 in 1 Mifare® Proximity Card Reader



- 1-Door Stand-Alone or Wiegand 26, 30 or 44 bit output
- Mifare® 13,56 MHz technology
- 300 card Stand-Alone capacity
- 4" (10 cm) read range
- 10 ft (3 m) of cable (AWG28)
- PCB sealed in epoxy
- Operating temp: -13°F to 158°F (-25°C to 70°C)
- Power requirements: 12 VDC

SOLARMB

Mifare® Proximity Card Reader



- Reads Mifare® Classic 13,56 MHz
- Desfire EV1 model : **SOLARMBD**
- Wiegand 26, 30 or 44 bit output
- Indoor/Outdoor (PCB sealed in epoxy)
- 4" (10 cm) read range
- Illuminated card reader (Blue, green and red).
- Operating temp: -13°F to 158°F (-25°C to 70°C)
- Power requirements: 12 VDC
- Consumption : 100 mA.

SOLSYSDW

Mifare® EV1 DESFire Card Readers



- Mifare® 13.56 MHz technology.
- Desfire EV1 (2K to 8 K) or Classic.
- AES 128 encryption
- 26, 30 or 44-bit Wiegand output
- PCB sealed in epoxy.
- Audible and visual feedback.
- Power requirements: 12 VDC
- Operating temp: -40°F to 158°F (-40°C to 70°C)
- Consumption : 200 mA.

DGLP M WLC

Mifare® Proximity Reader



- Rugged polycarbonate
- 26, 30 or 44-bit Wiegand output
- PCB sealed in epoxy.
- Dust/Weather/Vandal resistant
- Audible and visual feedback.
- Power requirements: 12 VDC
- Operating temp.: -13°F to 158°F (-25°C to 70°C)

DGLI M WLC

Mifare® Proximity Reader



- Stainless steel proximity reader
- 26, 30 or 44-bit Wiegand output
- Mifare® 13.56 MHz technology.
- PCB sealed in epoxy.
- Dust/Weather/Vandal resistant
- Audible and visual feedback.
- Power requirements: 12 VDC
- Operating temp: -13°F to 158°F (-25°C to 70°C)

DGLP WLC26 / DGLP FN WLC26

Multi-Technology Wiegand Proximity Reader

DGLP FN WLC26



DGLP WLC26



- Rugged polycarbonate
- 26-bit format Wiegand output
- Compatible with CDVI, Centaur (Position Technology) and most 26-bit format cards.
- Up to 3.5" (8 cm) read range
- Potted electronics
- Red/Green LEDs and Buzzer
- Power requirements: 12 VDC

DGLI F WLC26

Multi-Technology Wiegand Proximity Reader



- Stainless steel proximity reader
- Dust/Weather/Vandal resistant
- 26-bit format Wiegand output,
- Compatible with CDVI, Centaur (Position Technology) and most 26-bit format cards.
- Up to 3.5" (8 cm) read range
- Potted electronics
- Red/Green LEDs and Buzzer
- Power requirements: 12 VDC

NANOPB (Black) / NANOPW (White)

Mini Wiegand Proximity Reader



- Reads CDVI Wiegand 26-bit card encoding
- 4" (10 cm) read range
- Illuminated card reader (Blue, green and red).
- Audible feedback
- PCB sealed in epoxy
- Operating temp: -13°F to 158°F (-25°C to 70°C)
- Power requirements: 12 VDC

STARPB (Black) / STARPW (White)

Mullion Proximity Reader



- Reads CDVI and most popular 26-bit Wiegand card encoding
- 4" (10 cm) read range
- Illuminated card reader (Blue, green and red).
- Audible feedback
- PCB sealed in epoxy
- Operating temp: -13°F to 158°F (-25°C to 70°C)
- Power requirements: 12 VDC

SOLARPB (Black) / SOLARPW (White)

Multi-Technology Proximity Reader



- Reads CDVI and most popular 26-bit Wiegand card encoding
- 4" (10 cm) read range
- Illuminated card reader (Blue, green and red).
- Audible feedback
- PCB sealed in epoxy
- Operating temp: -13°F to 158°F (-25°C to 70°C)
- Power requirements: 12 VDC

SOLARKPB / SOLARKPW

Keypad & Multi-Technology Reader



SOLARKPB

SOLARKPW

- Touch sensitive keypad
- Keypad code of 4 to 8 digits
- Reads CDVI and most popular 26-bit Wiegand card encoding
- 4" (10 cm) read range
- Audible feedback
- PCB sealed in epoxy
- Operating temp: -13°F to 158°F (-25°C to 70°C)
- Power requirements: 12 VDC

DGLI WLC26

Multi-Technology Wiegand Proximity Reader



- Stainless steel proximity reader
- Dust/Weather/Vandal resistant
- 26-bit format Wiegand output,
- Compatible with CDVI, Centaur (Position Technology) and most 26-bit format cards.
- Up to 3.5" (8 cm) read range
- Potted electronics
- Red/Green LEDs and Buzzer
- Power requirements: 12 VDC

GALEO/W

Keypad with Backlit Keys



- 26-bit Wiegand keypad
- Heavy-duty ZAMAK cast alloy (Zinc, Aluminium, Magnesium and Copper)
- Eye-catching bright blue back-lighting
- Potted electronics
- Integrated Piezo/Buzzer
- Power requirements: 12 VDC

KCPROXWLC26

Proximity card reader and keypad



- Vandal proof housing
- Backlit keys
- Compatible with CDVI, Centaur (Position Technology) and most 26-bit format cards.
- Red/Green LEDs and Buzzer
- Operating Temp: -13°F to 140° (-25°C to 60°C)

R125USB

Card Enrollment Unit

Cards are automatically enrolled in the ATRIUM or CENTAUR database. Simply present the CDVI card or badge encoding in front of the unit and the code is read by the PC and put into the cardholder's file.



- Connect to PC USB port
- Cable included
- 3.4" x .9" x .43" (87 x 23 x 11 mm)
- Also available to read;
HID cards: **R125USBH**
MIFARE cards: **R1356USB**

AMC25

ATRIUM Mobile Credential License



- Contains 25 mobile credentials
- Give users the ability to unlock doors with their phone when using the ATRIUM BT app
- Compatible with KRYPTO Bluetooth readers only

TAG-EV2

Mifare DESFire EV2 Tag



DESFire EV2 is the most recent technology with a better read range and faster card reading than EV1.



- DESFire EV2 4k format
- 13.56 MHz proximity card
- 1.75" (L) x .5" (H) x .08" (D) (45 x 13 x 2 mm)
- Comes in packs of 25
- Other encoding available:

CDVI 125 kHz: **TAG**
HID 125 kHz: **TAG-H**

CS25

Standard clamshell card



- CDVI 26-bit Wiegand format
- 125 kHz proximity card
- 3.35" (L) x 2.1" (H) x .08" (D) (85 x 54 x 1.8 mm)
- **Sequentially generated decimal card numbers (printed on each card)**
- Comes in packs of 25
- Other encoding available:
HID 125 kHz: CSH25
Mifare Classic 1k: CSM
Mifare DESFire EV1 4k: CSMD25
Mifare DESFire EV2 4k: CSEV2
Dual Technology (EV2/125 kHz): **CSDT**

KTAG25

Black Key Tag



- CDVI 26-bit Wiegand format
- 125 kHz proximity card
- Polycarbonate tag
- 1.6" (L) x 1.3" (H) x .16" (D) (40 x 33 x 4 mm)
- **Sequentially generated decimal card numbers (printed on each card)**
- Comes in packs of 25
- Other encoding available:
HID 125 kHz: **KTAGH25**
Mifare Classic 1k: **KTAGM25**

ISO25

Printable ISO Card



- CDVI 26-bit Wiegand format
- 125 kHz proximity card
- Printable on both sides
- 3.35" (L) x 2.1" (H) x .08" (D) (85 x 54 x 1.8 mm)
- **Sequentially generated decimal card numbers (printed on each card)**
- Comes in packs of 25
- Other encoding available:
HID 125 kHz: **ISOH25**
Mifare Classic 1k: **ISOM25**
Mifare DESFire EV1 4k: **ISOMD**
Mifare DESFire EV2 4k: **ISOEV2**
Dual Technology (EV2/125 kHz): **ISO25DT**
Dual Technology (EV2/HID 125 kHz): **ISO25DTH**

BTAG25

Blue Key Tag



- CDVI 26-bit Wiegand format
- 125 kHz proximity card
- Polycarbonate tag
- 1.6" (L) x 1.3" (H) x .16" (D) (40 x 33 x 4 mm)
- **Sequentially generated decimal card numbers (printed on each card)**
- Comes in packs of 25
- Other encoding available:
HID 125 kHz: **BTAGH25**
Mifare Classic 1k: **BTAGM25**

DISCTAG25

Mini PVC Tag



- CDVI 26-bit Wiegand format
- 125 kHz proximity card
- Adhesive on one side
- .8" dia x .06" (D) (30 x 1.5 mm)
- **Sequentially generated decimal card numbers (printed on each card)**
- Comes in packs of 25
- Other encoding available:

HID 125 kHz: **DISCTAGH25**
Mifare Classic 1k: **DISCTAGM25**
Mifare DESFire EV2 4k: **DISCTAGEV2**

HEXADECIMAL CREDENTIALS

Randomly generated hexadecimal card numbers

All these are 125 kHz CDVI encoding card

CP: Thin card for printing photos and text (ISO)



CPE: Standard clamshell card



PPC: Rugged gray polycarbonate key ring card



BP: Elegant leather key ring tag



PP: Stylish black polycarbonate tear drop card, available for Mifare® proximity reader: PVP



GALEOBT

Bluetooth Stand-Alone Keypad with Backlit Keys

H.R.V.
HIGH RESISTANCE
TO VANDALISM

**Turn your
Smartphone into
a Keypad**

Bluetooth™
4.0

Low Energy

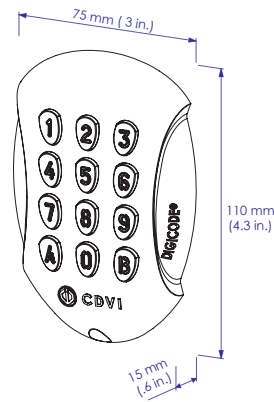


- Indoor/outdoor keypad
- 100 user codes (4 or 5 digits)
- Remote controller

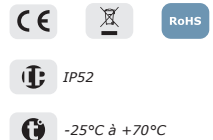
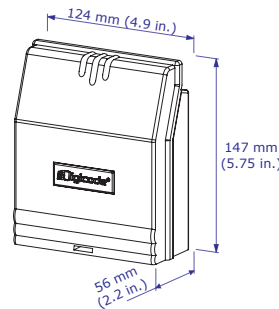
The GALEOBT includes a 10 ft (3 m) cable to connect to the remote controller. 30 ft (10 m) maximum distance between the keypad and the remote controller

- 3 independent relay outputs
- Request-to-exit input
- Programmable audible feedback buttons
- Power: 12/48 VDC or 12/24 VAC
- Timed (1 to 99 sec.) or latched output

GALEO Keypad



Remote controller



PROMI ECO

1-Door Stand-Alone Keypad



- Built-in controller
- 100 user codes (3 to 8 digits)
- Request-to-exit input
- Easy setup
- Audible and visual feedback
- Power requirements: 12 VDC/AC

KCIEN/SBP

Stand-Alone Keypad with Backlit Keys

H.R.V.
HIGH RESISTANCE
TO VANDALISM



- Illuminated stainless steel keypad
- 100 user codes (4, 5 or 6 digits)
- 2 form C outputs (8 A/250 V), timed (1 to 99 sec.) or latched
- Audible feedback buttons
- Request-to-exit input
- Potted electronics
- Power requirements: 12/24 VAC or 12/48 VDC
- Available with call button (Doorbell/Chime): KCIEN



BKC-5000B

3 in 1 Device - Mobile, Keypad and Card Reader



- Compatible with iOS and Android
- Proximity distance 164 ft in open space without blocking by metal or concrete wall/door frames
- 200 users with mobile app
- 1000 event log
- Easy plug & play installation



2400KIT

Universal Door Strike



- Designed for cylindrical locksets
- Fail safe or fail secure (default)
- Includes 2 faceplates
- Low profile : 1 1/4" depth overall
- Static strength : 1000 lbs (454 kg)
- Latch throw : 1" max with 1/8" door gap
- Current draw : 300 mA/12 VDC; 150 mA/24 VDC
- Dimensions : 4 7/8" x 1 1/4" x 1 1/4"

2435KIT

Heavy Duty Door Strike



- Designed for cylindrical or mortise locksets
- Fail safe or fail secure (default)
- Includes 5 faceplates
- Heavy duty stainless steel construction
- Static strength : 1000 lbs (454 kg)
- Latch throw : 1" max with 1/8" door gap
- Current draw : 250 mA/12 VDC; 150 mA/24 VDC
- Dimensions : 3 5/16" x 1 5/8" x 1 13/16"

2495FR

Fully Surface Mount Door Strike (1/2" - 3/4")



- Fire "Rated"
- Fully Surface Mount
- 1/2" to 3/4" Latch throw
- Designed for push bar
- Fail safe or fail secure (default)
- UL Listed
- Static Strength : 1500 lbs (680 kg)
- Current Draw: 540 mA/12 VDC; 270 mA/24 VDC
- Dimensions : 8" x 1 3/4" x 1/2"

9800

Infrared Sensor Exit Button



- Standard plate, aluminum alloy finish
- No touch, wave-to-exit
- Dual-LED indicating door status
- Low current draw (40 mA/15 mA)
- Rating: 3 A/12 ~ 28 VDC

2460

Partial Surface Mount Door Strike



- Partial surface mount
- Designed for crash bars
- Latch & lock monitoring
- Fail safe or fail secure (default)
- Static strength : 1500 lbs (680 kg)
- Zinc alloy construction in black finish
- Accommodates 11/16" (17 mm) latchbolt
- Current draw: 230 mA/12 VDC; 140 mA/28 VDC
- Dimensions : 9 1/8" x 1 9/16" x 13/16"

3820

Motorized Cabinet Lock



- Surface & side mount
- Designed for cabinets and lockers
- Fail secure
- Stainless steel locking pin assembly
- Field adjustable relock time delay
- Lock or door status monitoring
- Current draw in standby: 69 mA @ 12 VDC; 69 mA @ 24 VDC
- Dimensions : 2 3/8" (L) x 2 3/8" (W) x 7/8" (H) 2 3/8" (L) x 13/16" (W) x 1/4" (H)

SM300

300kg (660lbs) Holding Force



- Surface mount installation
- Power requirements: 12/24 VDC
- Current Draw: 500 mA @ 12 VDC, 250 mA @ 24 VDC
- Monitoring sensor
- Visual feedback (red & green)
- Dimensions: 10" x 1.7" x 1" (250 x 42.5 x 26 mm)

P400RN

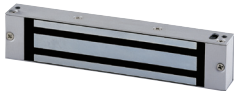
400kg (880lbs) Holding Force



- Retrofit electromagnetic door handle
- Complete Aluminium housing
- Power requirements: 12/24 VDC
- Current Draw: 560 mA @ 12 VDC, 270 mA @ 24 VDC
- 15,75" (H) x 5" (W) x 2,7" (D) (40 x 12,6 x 6,8 cm)

SM500

500kg (1100lbs) Holding Force



- Surface mount installation
- Power requirements: 12/24 VDC
- Current Draw: 500 mA @ 12 VDC, 250 mA @ 24 VDC
- Monitoring sensor
- Visual feedback (red & green)
- Dimensions: 10.5" x 2.9" x 1.6" (265 x 73 x 40 mm)

PWM25PSR

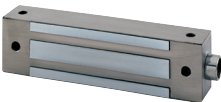
800kg (1750lbs) Holding Force



- Shearlock door handle
- Patented self-aligning mechanism
- Input voltage: 12, 24 or 48VDC
- Current Draw: 460 mA @ 12 VDC, 230 mA @ 24 VDC, 150 mA @ 48 VDC
- Available in black: PWM25PSR/RAL NOIR

ESM500

500kg (1100lbs) Holding Force



- Exterior applications & High-traffic areas
- Power requirements: 12/24 VDC
- Current Draw: 500 mA @ 12 VDC, 250 mA @ 24 VDC
- Monitoring sensor
- Visual feedback (red & green)
- Dimensions: 11.35" X 2.5" X 1.5" (288.5 x 64 x 37.5 mm)

PWM25ER

800kg (1750lbs) Holding Force



- Shearlock flush mount installation
- Patented self-aligning mechanism
- Input voltage: 12, 24 or 48 VDC
- Current Draw: 460 mA @ 12 VDC, 230 mA @ 24 VDC, 150 mA @ 48 VDC
- Surface option: PWM25SR

CZ3000

1500kg (3300lbs) Holding Force



- Shearlock
- Self-Aligning
- Power requirements: 12/24 VDC
- Current Draw: 600 mA @ 12 VDC and 300 mA @ 24 VDC
- Compact mortise-mount
- 8" H) x 1.2" (W) x 1.25" (D) (206 x 30 x 32 mm)
- Optional surface mount kit (KCZ 3000)

V5EI

500kg (1100lbs) Holding Force



- Flush mount installation
- Sliding door applications
- Power requirements: 12/24 VDC
- Current Draw: 550 mA @ 12 VDC, 270 mA @ 24 VDC
- 10.5" (H) x 2.5" (W) x 1.5" (D) (266 x 66 x 40 mm)
- Stainless steel

CDVI's high quality RADIUM transmitters/receivers are the perfect solution to operating parking gates, garage doors, wheelchair-accessible doors, etc. The RADIUM wireless systems offer longer range up to 820 ft (250 m), less interference jamming and excellent reliability. KeeLoq® Rolling Code technology ensures ultra-secure transactions.

R1

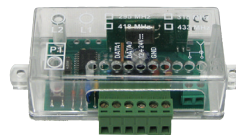
1-Button Remote



- European design
- Range up to 820 ft (250 m)
- Ergonomic, rugged & durable
- One CR2032 lithium battery
- Also available with built-in proximity tag

WRW

Wiegand Wireless Receiver



- 26-bit Wiegand output
- Power: 12 or 24 V (AC or DC)
- Dimensions: 4.3" x 1.75" x 1.1" (105 x 45 x 28 mm)
- Compatible with ATRIUM, CENTAUR or any 26-bit Wiegand-capable systems

R2 / R2T

2-Button Remote



R2

R2T

- European design
- Range up to 820 ft (250 m)
- Ergonomic, rugged & durable
- One CR2032 lithium battery (R2) or Two CR2016 lithium battery (R2T)
- R2T was designed for use in harsh environments
- Also available with built-in proximity tag

WR2LCD

2-Relay Stand-Alone Receiver with LCD Display



- Easier to program
- Up to 100 transmitter keys
- 1 NO relay + 1 NO/NC relay (24 VA)
- Self-learning memorization
- Pulse, latched or delayed relay output
- Power: 12 or 24 V (AC or DC)
- Dimensions: 4.3" x 1.75" x 1.1" (105 x 45 x 28 mm)

R4

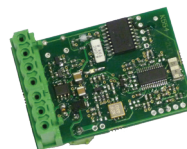
4-Button Remote



- European design
- Range up to 820 ft (250 m)
- Ergonomic, rugged & durable
- One CR2032 lithium battery
- Also available with built-in proximity tag

WRAP

ATRIUM Plug-in Wiegand Wireless Receiver



- Connect directly to ATRIUM Wiegand port
- Dimensions: 2.2" x 1.42" (55 x 36 mm)

WR4

4-Relay Stand-Alone Receiver



- Up to 85 transmitter keys
- 2 NO relay + 2 NO/NC relay
- Standard pulse output
- Relay 4 supports latched output
- Voltage: 12 or 24 V (AC or DC)

SEA433

433MHz Tuned Antenna



- Increase reception and/or range
- 11.5 ft (3.5 m) coaxial cable (RG 58) included
- "L"-shaped bracket for wall-mounting

WRACT

Wiegand Active Tag Receiver



- Output: 26 bit Wiegand
- Compatible with RACT active tag remote
- Sensitivity adjustable up to 65 ft (20 m)
- Enclosure protection: IP 65
- Input voltage: 12 VAC or DC

RACT

Active Tag Remote



- Transmits continually
- Tri-color LED for battery status
- Range (line of sight): 20 m (65 ft)
- Two CR2016 lithium battery
- Operating temperature: -22°F to 158 °F (-30°C to +70 °C)
- Dimensions: 2.4" x 1.4" x .63" (61 x 36 x 16 mm)
- Available with HID passive tag : **RACTH**

WRAES

Wireless Receiver with AES128 Encryption



- 2 in 1, Stand-alone or Wiegand 26, 30 or 44-bit output
- AES128 encrypted signal
- 500 transmitters capacity
- 2 Relays onboard
- Compatible with R2TAES, R2AES & R4AES remotes

AES128
ENCRIPTION

R2TAES

2-Button Mini Remote with AES128 Encryption



- AES128 encrypted signal
- Heavy-duty construction
- Range up to 820 ft (250 m)
- Ergonomic, rugged & durable
- One CR2032 lithium battery
- Also available with a built-in DESFire EV2 tag (KRYPTO ready) : **R2TEV2**

AES128
ENCRIPTION

R2AES

2-Button Remote with AES128 Encryption



- AES128 encrypted signal
- European design
- Range up to 820 ft (250 m)
- Ergonomic, rugged & durable
- One CR2032 lithium battery
- Also available with a built-in DESFire EV2 tag (KRYPTO ready) : **R2EV2**

AES128
ENCRIPTION

R4AES

4-Button Remote with AES128 Encryption



- AES128 encrypted signal
- European design
- Range up to 820 ft (250 m)
- Ergonomic, rugged & durable
- One CR2032 lithium battery
- Also available with a built-in DESFire EV2 tag (KRYPTO ready) : **R4EV2**

AES128
ENCRIPTION

U4GO

U4GO is a high performance UHF (902-928 MHz) integrated system perfect for vehicle and people identification. The **U4GO** provides secure long-range access for many applications such as parking facilities, gated communities, campus' and rolling stock. The **U4GO** is easy to install, versatile, and is perfectly suited for access control systems (Wiegand output). The high security protocol (AES128) RF module can also manage up to 100 remote transmitters.



A6U49

Mid-Range UHF Reader (6 meters)



- Compatible with ATRIUM, CENTAUR or any access control system with a Wiegand input port
- Read range: 20 ft (6 m)
- Vehicle moving speed: 50 mph (80 Km/h)
- Operating frequency: 902-928 MHz
- Protocols: ISO18000-6B, ISO18000-6C /EPC GEN2
- Supplied power supply
- Dimensions: 9.25" x 9.25" x 2.25"
(235 x 235 x 57 mm)

A10U49

Long-Range UHF Reader (10 meters)



- Compatible with ATRIUM, CENTAUR or any access control system with a Wiegand input port
- Read range: 33 ft (10 m)
- Vehicle moving speed: 50 mph (80 Km/h)
- Operating frequency: 902-928 MHz
- Protocols: ISO18000-6B, ISO18000-6C /EPC GEN2
- Supplied power supply
- Dimensions: 17.5" x 17.5" x 2.2"
(445 x 445 x 55 mm)

High Performance **UHF** Integrated System

ATU48

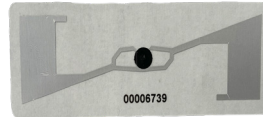
UHF Adhesive Interior Windshield RFID Tag



- For interior windshield
- Passive, battery free tag
- Thin and flexible sticker format
- Sold in packs of 10
- Customized printing available on request
- Compatible with A6U49 and A10U49

ATU48P

UHF Adhesive Exterior Windshield RFID Tag



- For exterior windshield or headlight
- Passive, battery free tag
- Thin and flexible sticker format
- Sold in packs of 10
- Customized printing available on request
- Compatible with A6U49 and A10U49

CTU48

UHF ISO RFID Card



- Customized printing available on request
- Sold in packs of 10
- Also available in dual technology (UHF + Mifare DESFire EV2 or other combo)
- Compatible with A6U49 and A10U49

CHU4GO

UHF RFID Card Holder



- Card holder for UHF CTU48
- Back with suction cup for easy fasten on a car window
- PVC material
- Sold in packs of 10
- Size: 3.15" x 2.3" x .6" (90 x 58 x 15 mm)

PTU48

UHF License Plate RFID Tag



- Designed for vehicle identification
- Dust and water resistance
- Operates in harsh environment
- Compatible with A6U49 and A10U49



RELIABLE. BIOMETRIC. SOLUTIONS.

IEVO-M

Micro Fingerprint Reader



- For internal use, clean & low footfall environments biometric reader
- Up to 50,000 fingerprints via control board
- AES128-bit encrypted transmission
- Optical sensor
- Customisable RAL (at cost)
- Visual and audible feedback
- Optional RFID card reader module: **IEVO-M+**

IEVO-MDR

Micro USB Desktop Registration Unit



- High quality registration units
- USB powered no additional PSU
- Desktop mount
- 500dpi image resolution
- Fast & reliable image acquisition
- Compatible with the Micro fingerprint reader

IEVO-U

Ultimate™ Fingerprint Reader



- For internal & external use
- High performance multi-spectral imaging (MSI) sensor
- Vandal resistant biometric reader
- Up to 50,000 fingerprints via control board
- AES128-bit encrypted transmission
- Customisable RAL (at cost)
- Visual and audible feedback
- Optional RFID card reader module: **IEVO-U+**

IEVO-UDR

Ultimate™ USB Desktop Registration Unit



- High quality registration units
- USB powered no additional PSU
- Desktop mount
- 500dpi image resolution
- Fast & reliable image acquisition
- Compatible with the Ultimate™ fingerprint reader

IEVO-MB10K

2-Reader Control Board



- Up to 10,000 fingerprints matching system
- Supports 2 fingerprint reader units
- Dual channel Wiegand output
- AC/DC or PoE+ power options
- LED indication for clear operations
- Integration into existing systems

IEVO-MB50K

2-Reader Control Board



- Up to 50,000 fingerprints matching system
- Supports 2 fingerprint reader units
- Dual channel Wiegand output
- AC/DC or PoE+ power options
- LED indication for clear operations
- Integration into existing systems

FTC-1000

AI Facial Recognition and Temperature Scanner (with mask detection)



- 2 in 1 biometric solution: Wiegand or stand-alone
- 30,000 faces capacity
- Response speed: 200 ms
- Events buffer: 25,000
- Detects body temperature and mask
- Temperature accuracy: $\pm 0.5^{\circ}\text{F}$ ($\pm 0.3^{\circ}\text{C}$)
- Ideal for health management
- Relay output: C-NO-NC
- Visual and audio feedback
- Power requirements: 12 V DC 2A (provided)
- Camera: 2 mega pixel
- Screen: 7 HD LCD 600*1024
- IP65
- NDAA compliant
- Dimensions: 8.6 x 4.4 x 0.85 in. (218 x 112 x 22 mm)
- Aluminum housing and ultra white tempered glass panel
- Operating temperature: 50°F to 122°F (10°C to 50°C)
- Stand available at various heights:
 - C20** Desktop: 1.3 x 7.4 H in (33 x 189 mm)
 - C60** Child: 24 in (60 cm)
 - C110** Adult: 43 in (110 cm)

PREX

Request-to-Exit Illuminated Press Button



- 1 x NO & NC contact outputs
- Momentary switch
- Includes two plates, single gang and mullion size
- Input voltage : 12 VDC @ 5 A, 24 VDC @ 5 A, 110 VAC @ 5 A or 220 VAC @ 3 A
- UL, CE, IP65 & ROHS certified
- LED rating: 15 mA @ 12 VDC
- Also available with a latch switch: **PREX-L**

PBM

Illuminated Momentary Push Button



- NO and NC contact outputs
- Momentary switch
- Blue LED rating: 15 mA @ 12 VDC
- Switch rating : 12 VDC @ 5 A, 24 VDC @ 5 A, 110 VAC @ 5 A or 220 VAC @ 3 A
- IP65, UL, CE & ROHS certified
- Also available with a latch switch: **PBL**

VHESF

Flush Mount Infrared Request to Exit Switch



- Stainless steel
- Range: 10 to 20" (25 to 50 cm)
- Visual and audible feedback
- Input voltage: 9 or 15 VDC.
- Consumption:
 - Standby = 25 mA.
 - Activation = 65 mA.

DWSR104UBT

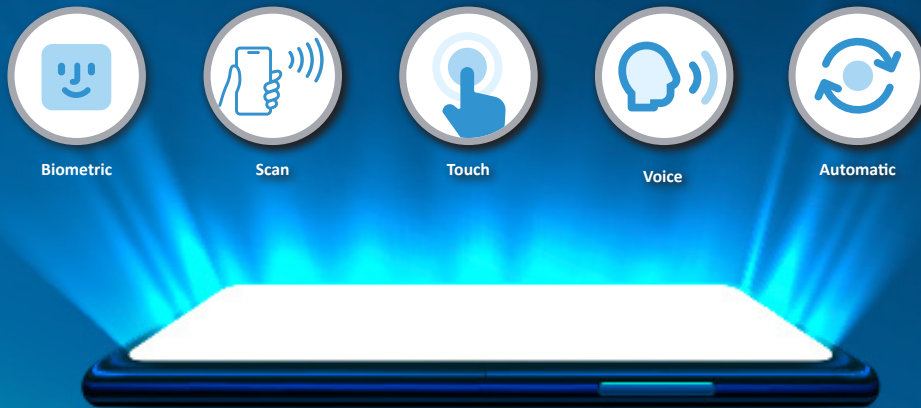
Bluetooth Spring Return Door Operator (push or pull)



- Universal arm for inward or outward opening included
- Bluetooth plug-in for programming via smartphone app
- Integrated Wireless Receiver compatible with RADIUM
- Adjustable pause time & obstacle detection
- Standalone or connected to an access control system
- Suitable for swing doors with 4.9 ft width max. and 440 lbs weight max.
- Operating modes: automatic, semi-automatic, door free & always open
- Electronic calculation of speed and movement
- Includes LCD screen and a backup battery



1 Phone 5 ways to unlock a door



**Scan to add CDVI's
contact details to
your smartphone**



828, Saint-Martin Blvd West, Laval, Quebec, Canada, H7M 0A7
Toll Free: 1-866-610-0102 • Tel.: (450) 490-7945 • Email: info@cdvi.ca

www.cdvi.ca

All the information contained within this document (pictures, drawing, features, specifications and dimensions) could be perceptibly different and can be changed without prior notice.
Reference manual: CDVI_CATALOGUE_PC_01_EN-USA_LETTER_CMYK.pdf - Printed in Canada - May 2021