

Capture Technical Support Guide

Firmware Update

Summary

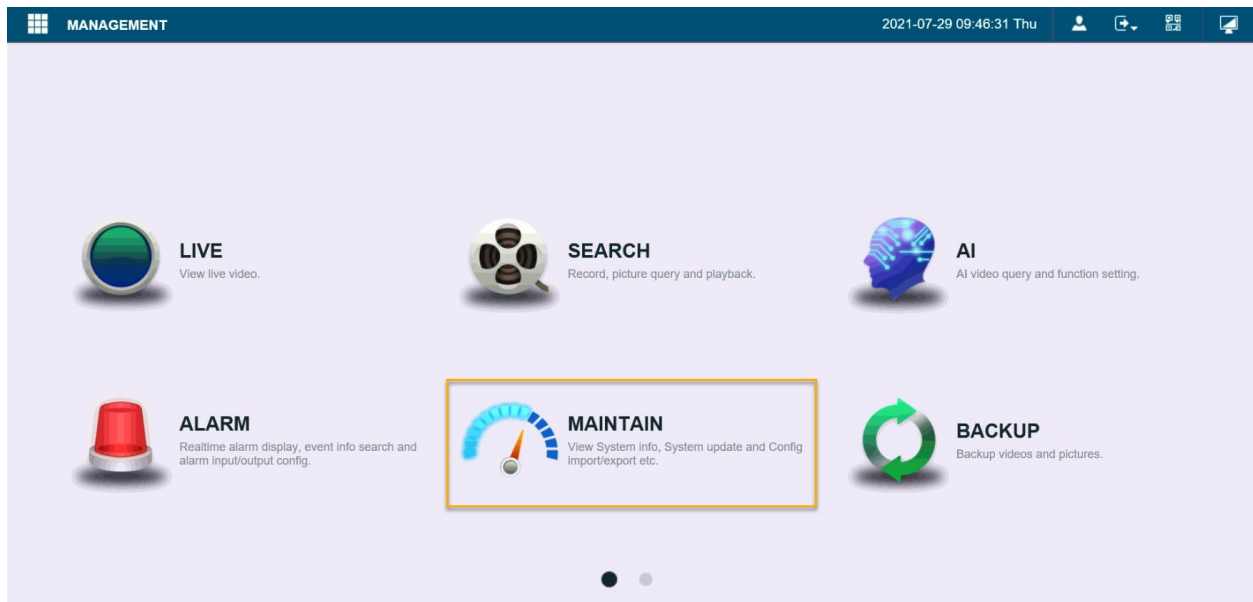
This guide will show how to update the firmware on Capture device. In this tutorial, we are using NVR web Interface.

Requirements

- Capture device initialized and set up on a network
- Computer that connected to the same network

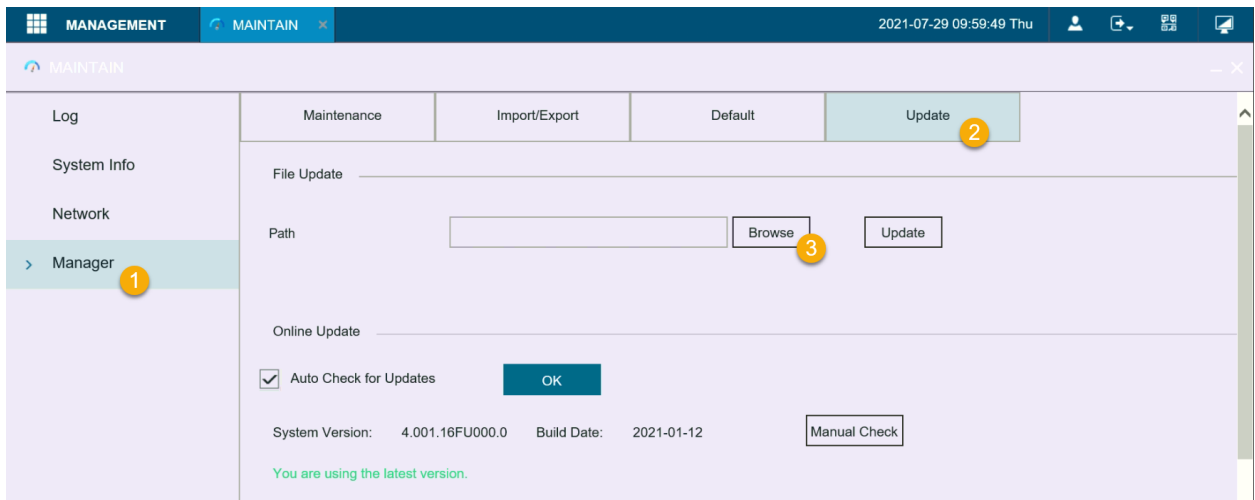
Instructions

1. Download the firmware file from ADI Capture website.
2. Login to Capture device from your web browser. Click on **Maintain**.

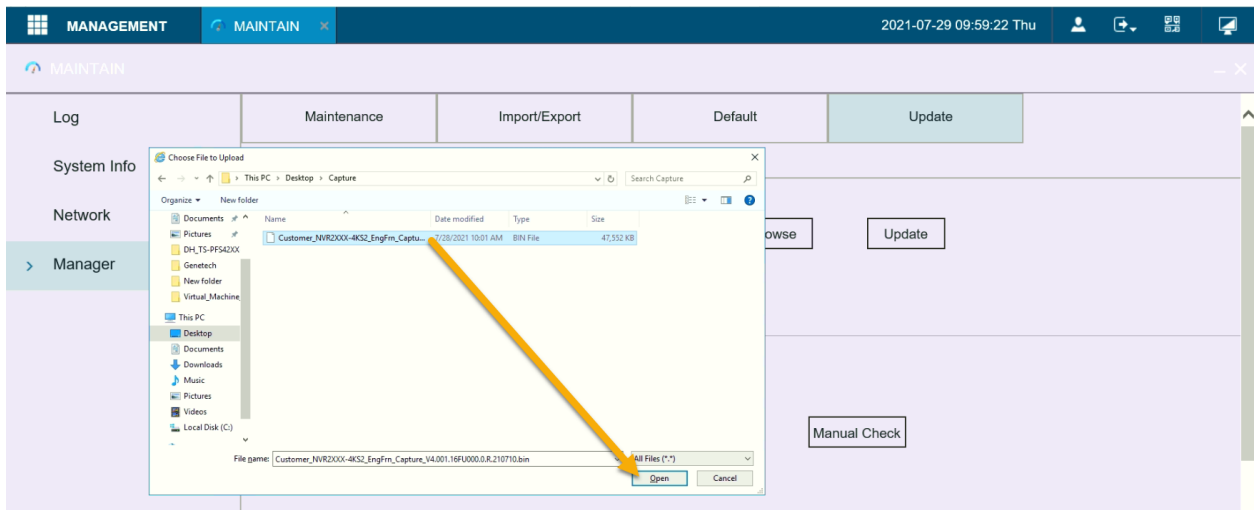


Capture Technical Support Guide

3. Click on **Manager > Update**.

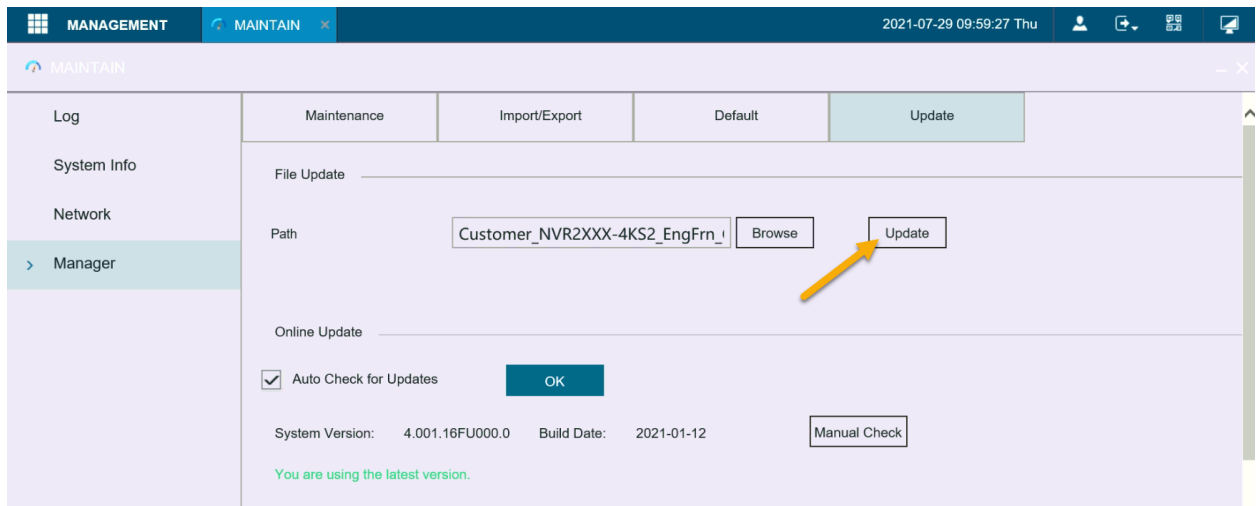


4. Click on **Browse**, and then select the firmware file in your PC. Click **Open**.



Capture Technical Support Guide

5. Click on Update button. The firmware update process will start.



Once the device firmware is successfully updated. Device will reboot.