

How can I add a DVR V4.2 or NVR V4.2 to the WBOX VMS client on my Windows PC via P2P (QR Code)?

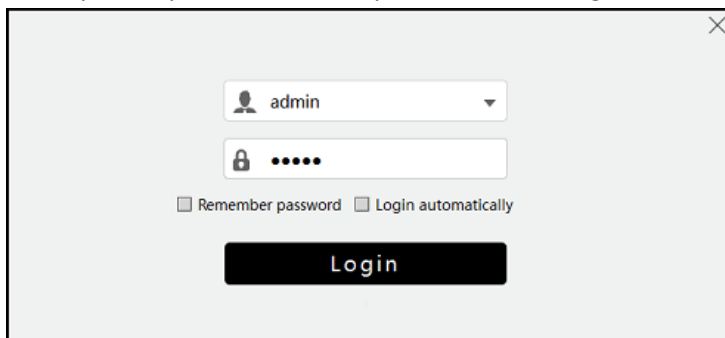
Product Models:

Hybrid DVR	NVR
0E-HD4C1TB	0E-4CHNVR1TB / 0E-4CHNVR2TB
0E-HD8C2TB	0E-8CHNVR2TB
0E-HD16C2TB	0E-16CHNVR2T / 0E-16CHNVR4T

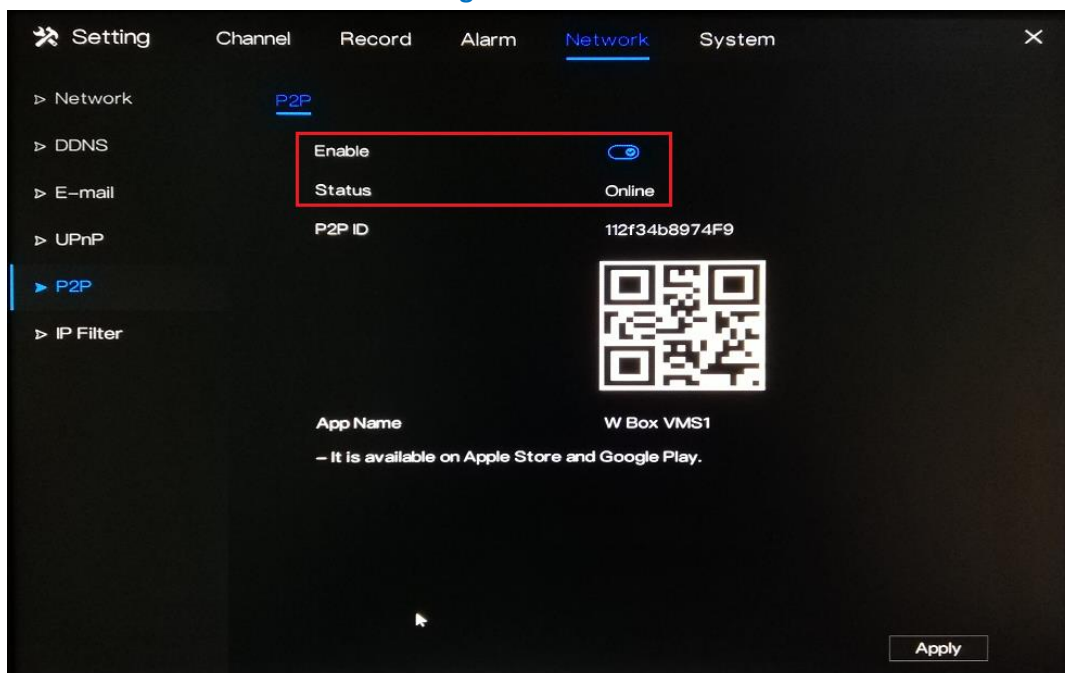
Firmware Version: V4.2.XXXX.0000.157.X.XX.X.X

Preparation:

- Download and install the WBOX VMS client. You can download it from the links below:
 - https://www.wboxtech.com/content/files/product_categories/ip_new_models/WBoxVMS.zip
 - https://drive.google.com/open?id=1Kbf_rmHYQKKB-sxYlu-mz9m-jDwr88fH
- After successfully installing the client, you will be prompted to log in. The default username and password is **admin**. You may also opt to 'Remember password' and 'Login automatically'.

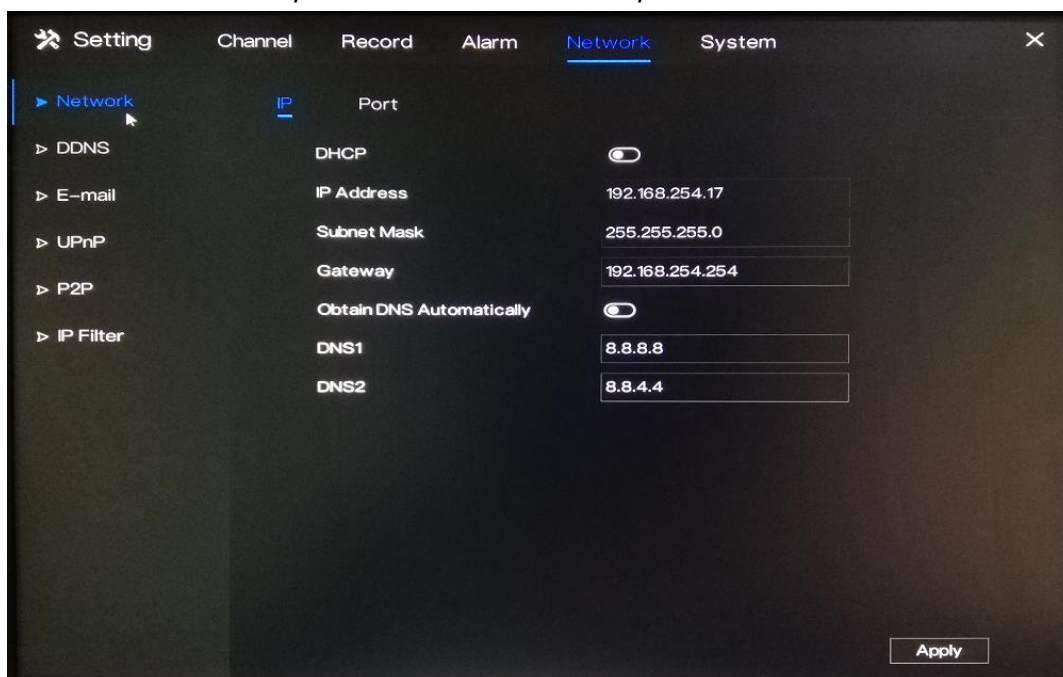


- On the device side, you have to make sure that it is connected to a network and the **P2P status is Online**. You can find this information in **Setting > Network > P2P**.



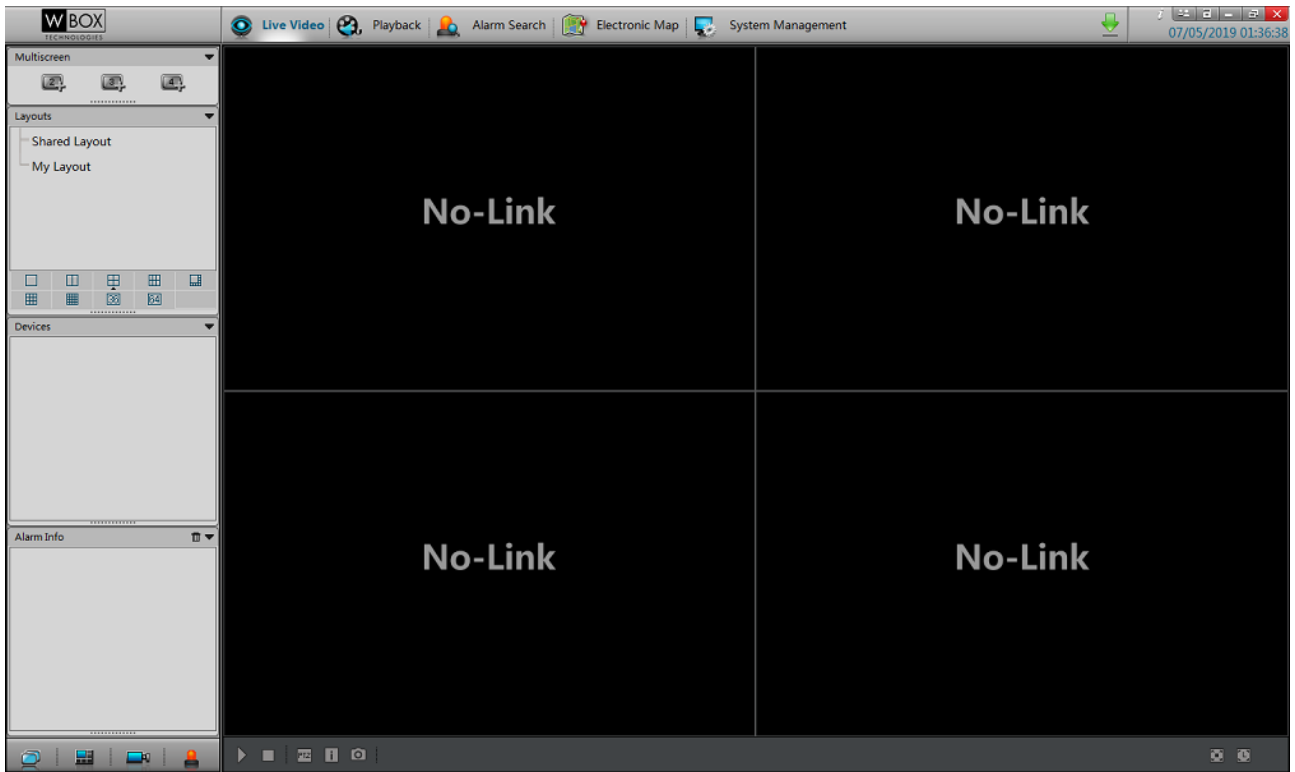
To ensure that the device is connected to the network properly, please follow the steps below.

- [1] Check if the device is connected to a router with Internet access.
- [2] Check if the device's network setting is set up properly. You can find this in **Setting > Network > Network > IP**.
 - a) The device's **IP Address** should be in the same range as the router's gateway.
 - b) **Subnet Mask** should be same as what is indicated in the router's network setting.
 - c) The **Gateway** should be the router's gateway or local IP address.
 - d) **DNS1** and **DNS2** can be your router's DNS servers or you can use **8.8.8.8** and **8.8.4.4**.

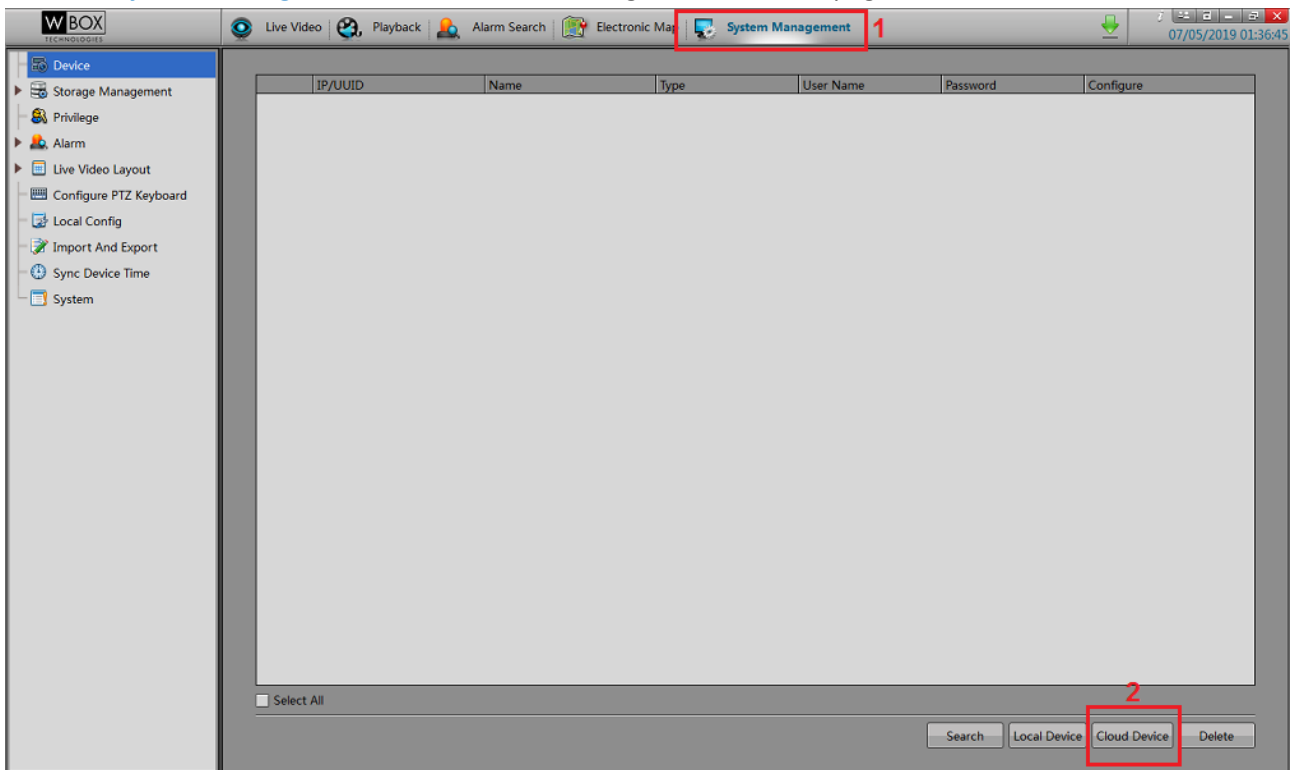


Procedure:

1. The page below will show up when you logged in to the client successfully.



2. Click the **System Management** tab. At the bottom right corner of the page, click **Cloud Device**.



3. You will be prompted with a pop-up screen as shown below.

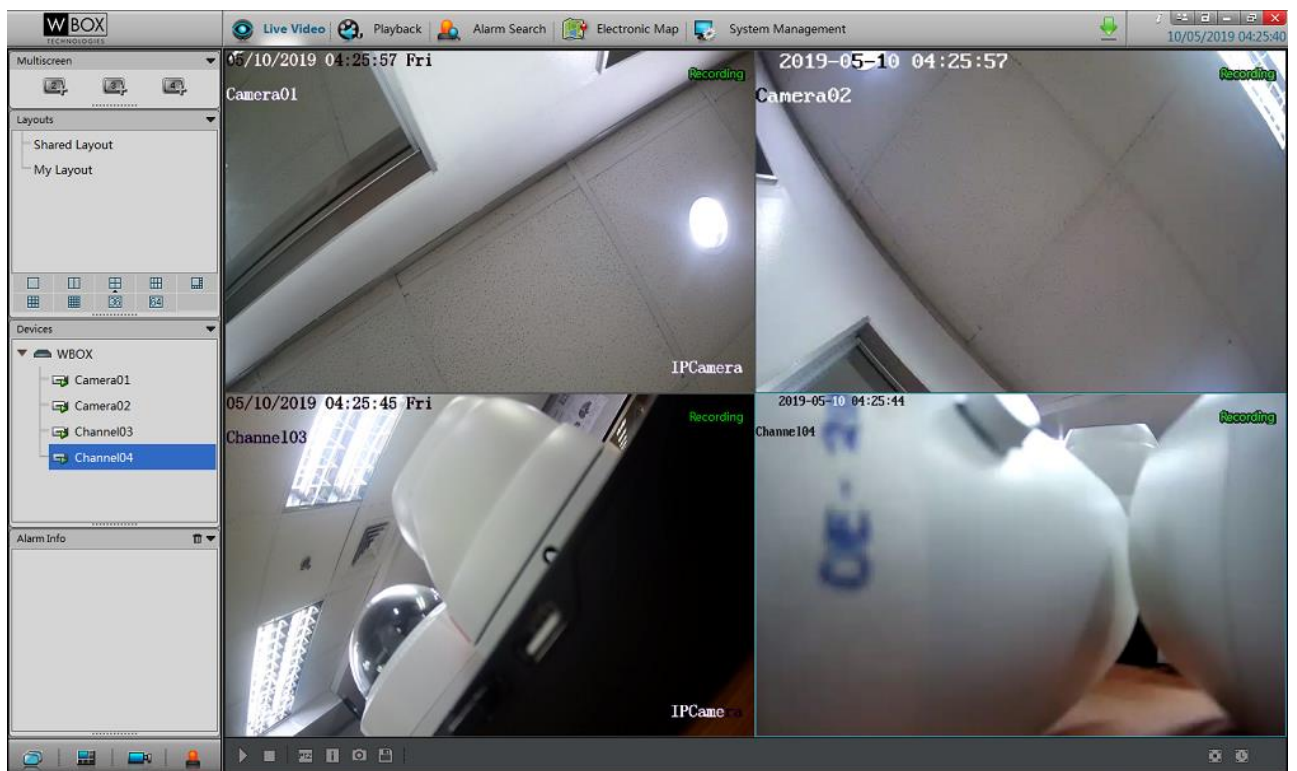
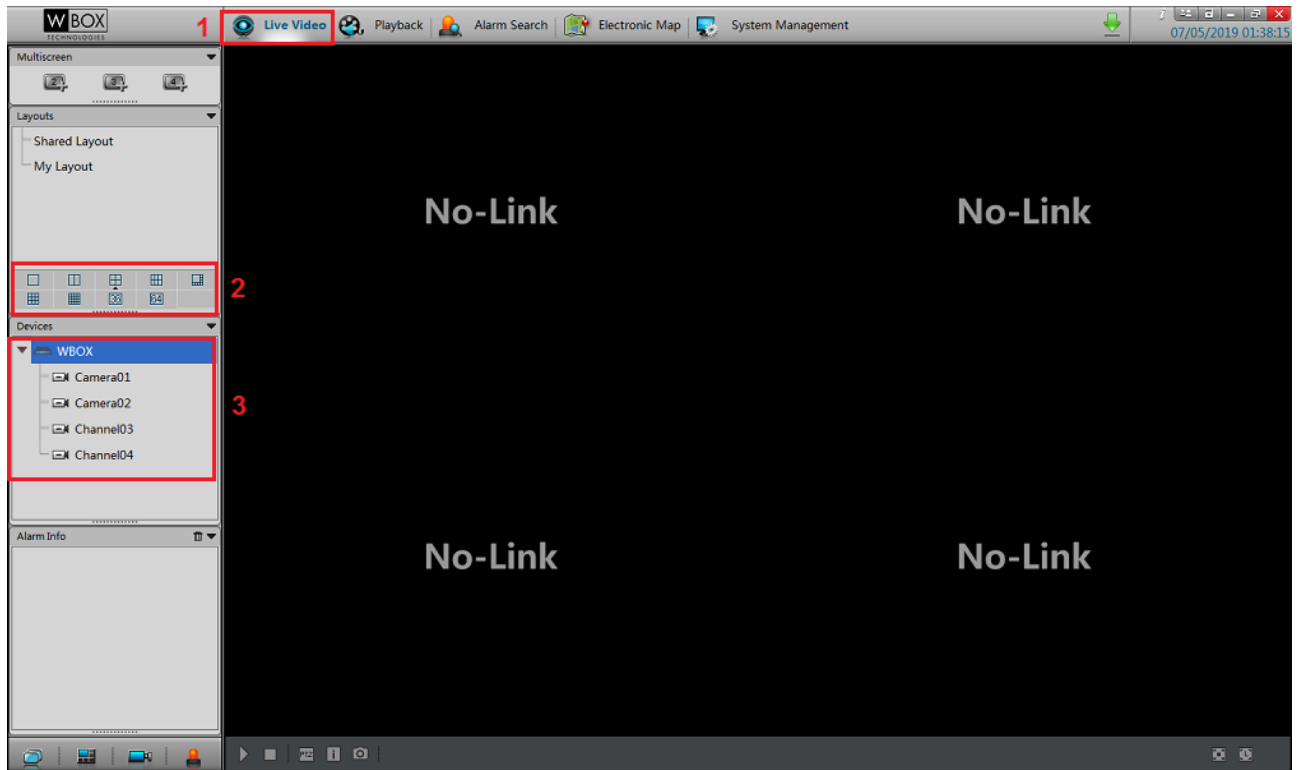
4. Input the needed information on the pop-up screen.

- a. Enter a **Nickname**.
- b. In the **Port** field, input the **Client Port** indicated in the device setting. This information can be found in **Setting > Network > Network > Port**.
Please note: The default value of the **Client Port** is **30001**. If you changed it to a different number, please make sure to input the new port number in the client.
- c. Enter the **Username** and **Password** of the device.
- d. Click **Apply** to save the information.

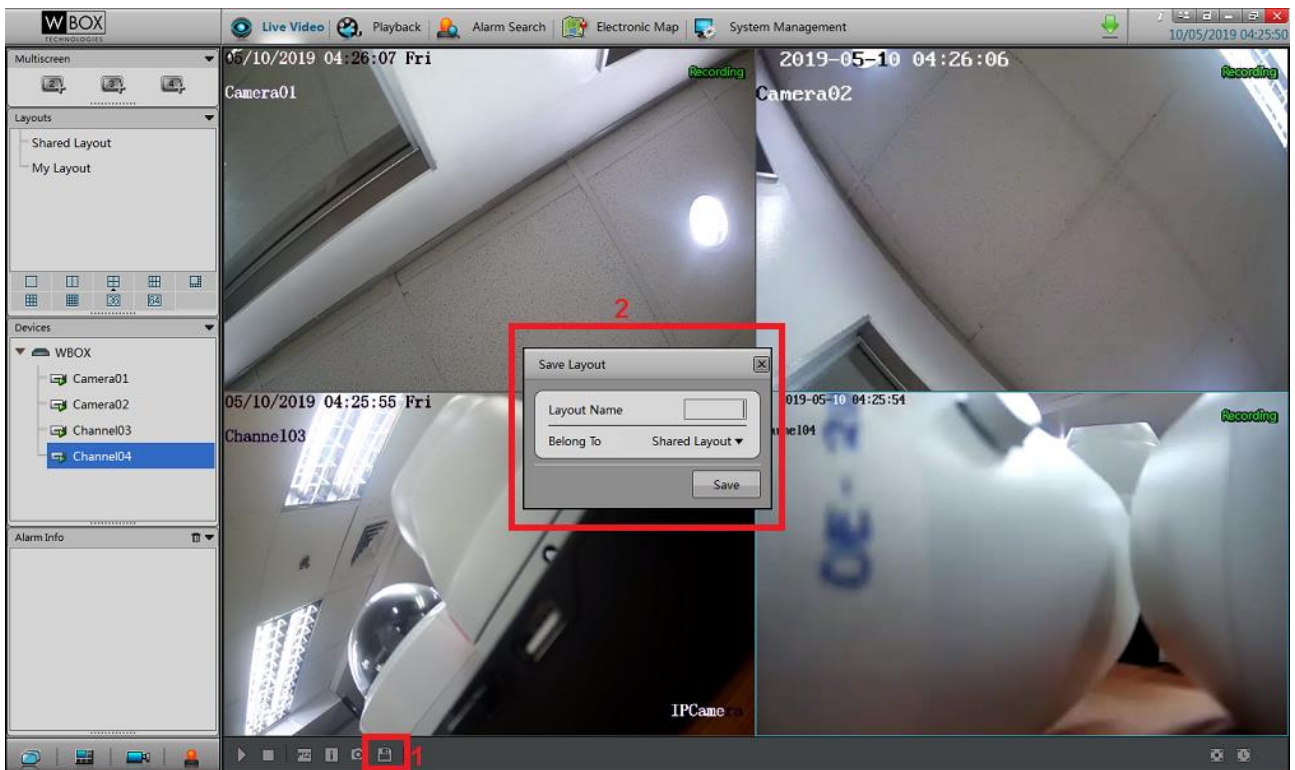
5. Once the device is successfully added, it will be listed under the device list in System Management.

IP/UUID	Name	Type	User Name	Password	Configure
<input type="checkbox"/> 1 [redacted]	WBOX	NVR	admin	*****	

6. To view the cameras, follow the steps below.
 - [1] Go to the **Live Video** tab.
 - [2] Select a **Layout**.
 - [3] Click the device that you have added.
 - [4] Drag and drop each camera to the No-Link boxes.



7. If you would like to save the current layout on the screen, follow the steps below.
 - [1] Click the **Save** (floppy disk) icon at the bottom of the screen.
 - [2] Input a **Layout Name** and choose if you would like to save it under Shared Layout or My Layout.
 - [3] Click **Save**.



8. After successfully saving the layout, it will now be listed under Layout on the left pane. You can just click the layout you have created to automatically view the cameras.

