

How to back up the recordings of a DVR V4.2 or NVR V4.2 on USB flash drive?

Product Models:

Hybrid DVR	NVR
0E-HD4C1TB	0E-4CHNVR1TB / 0E-4CHNVR2TB
0E-HD8C2TB	0E-8CHNVR2TB
0E-HD16C2TB	0E-16CHNVR2T / 0E-16CHNVR4T

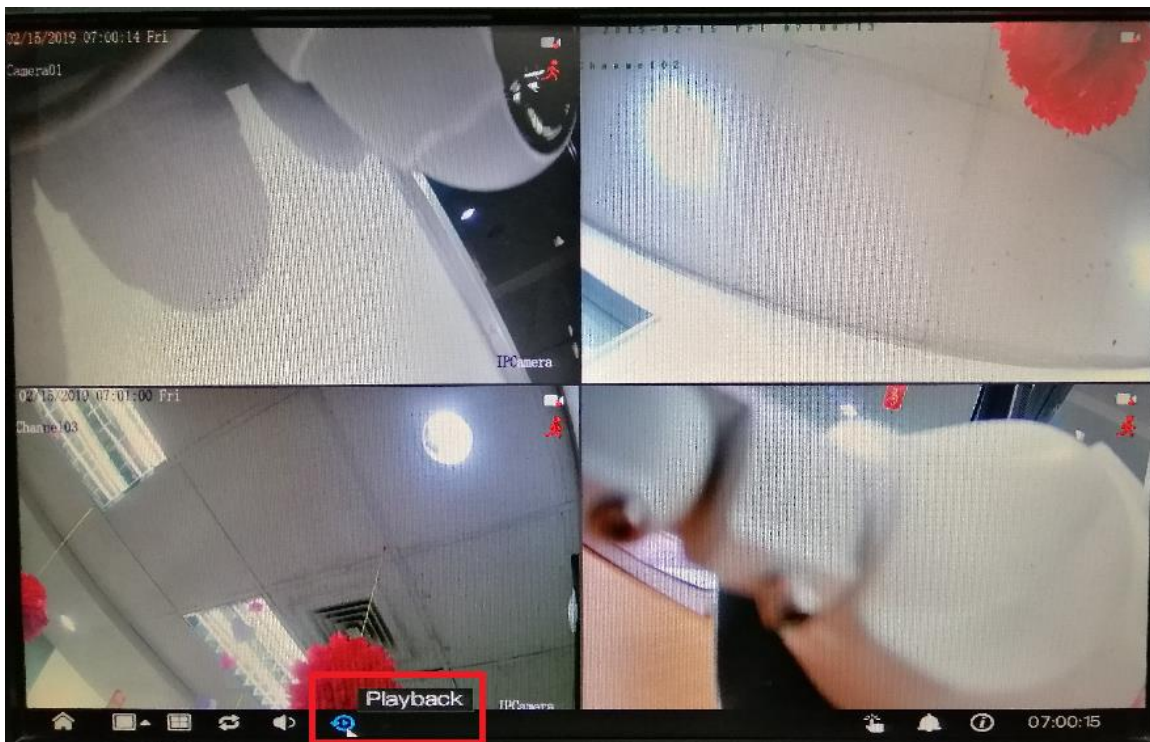
Firmware Version: V4.2.XXXX.0000.157.X.XX.X.X

Important Note:

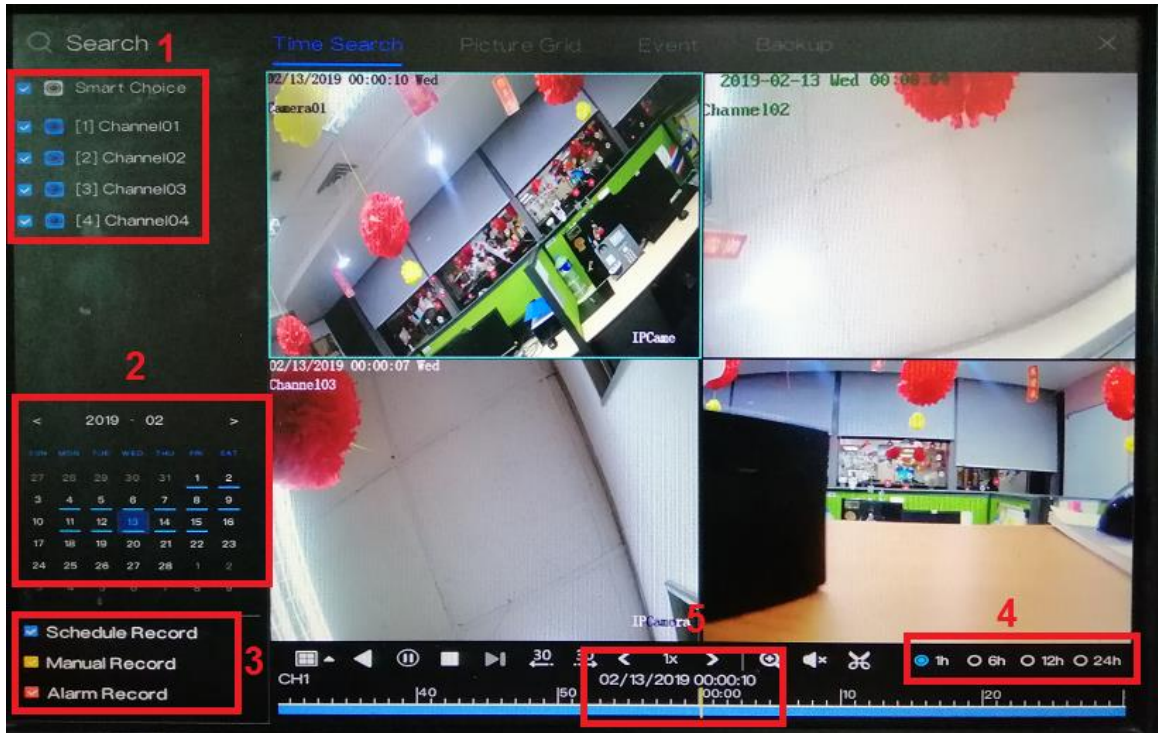
- The maximum storage capacity of the supported USB flash drive is 64GB.
- Ensure that the USB flash drive is formatted properly – **exFAT for 64GB** and **FAT32 for 32GB & below**.
- For Hybrid DVR, make sure that the USB flash drive and the mouse are both connected on the USB ports at the back of the device.

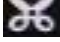
Procedure:

1. Go to the **Playback** menu on the device's GUI. It can be found on the task bar at the bottom of the screen when on live view.

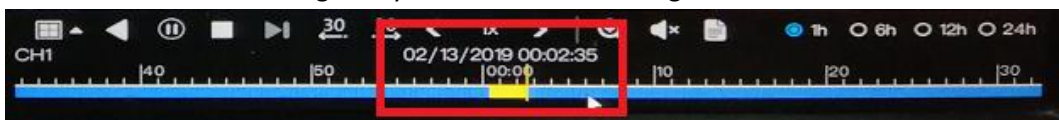



2. On **Time Search**, select the specific recording that you want to back up. Select your preferred:
 - [1] Camera
 - [2] Date
 - [3] Record Type
 - [4] Time Interval
 - [5] Start Time



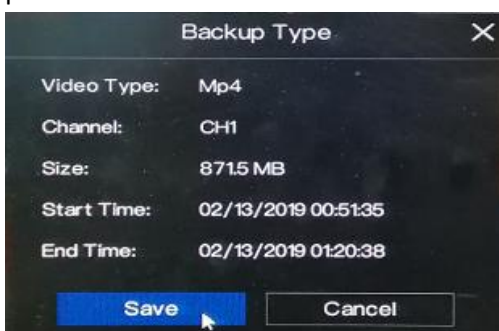
3. After selecting the specific time, click the  icon (**Start Backup**) to start the backup process.

4. Drag the timeline to until when you would like to back up the recordings. The yellow bar indicates the timeframe of the recording that you will be downloading.

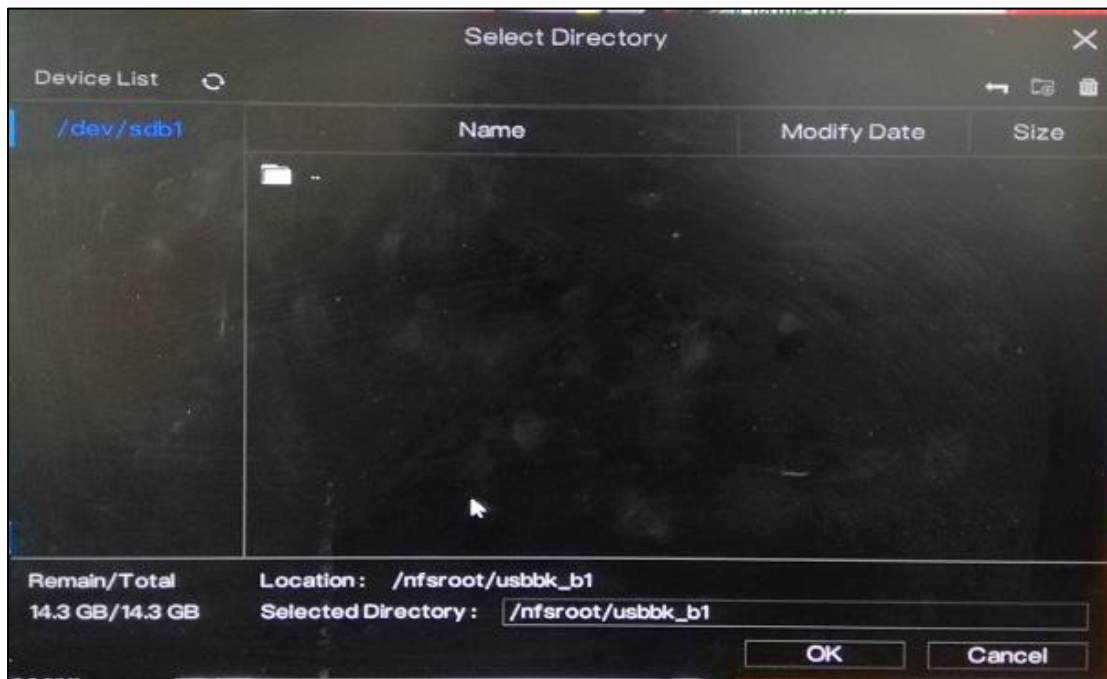


5. After selecting the specific timeframe of recording, click the  icon (**End Backup**) to save the recording.

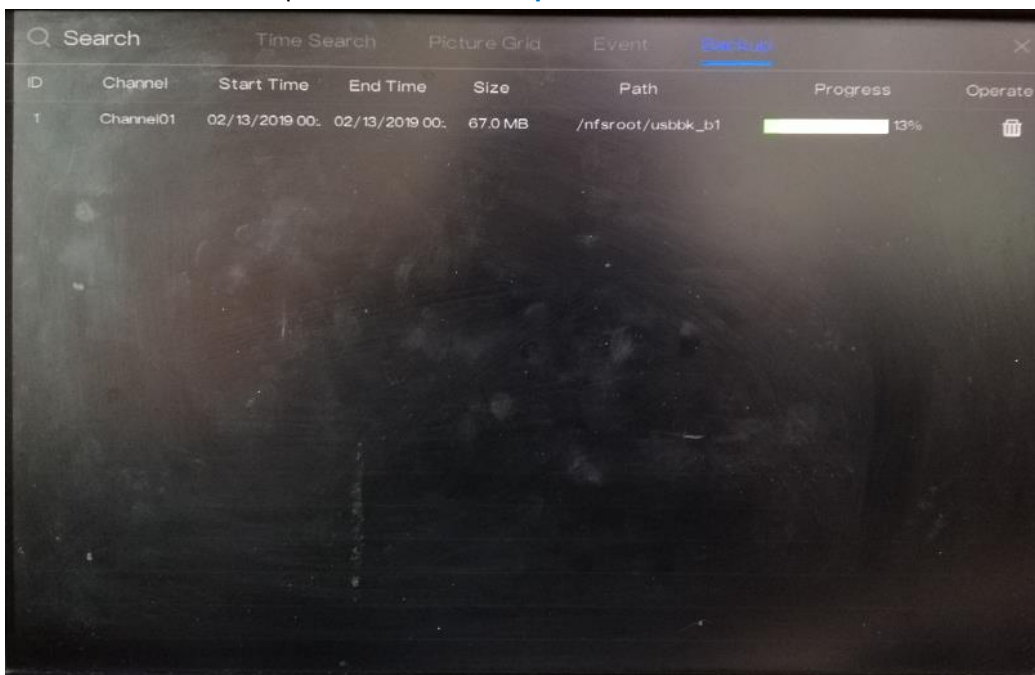
6. There will be pop-up message regarding the backup information and an option to save. Click **Save** to proceed.



7. Select the specific folder in the USB flash drive directory and then click **OK**.



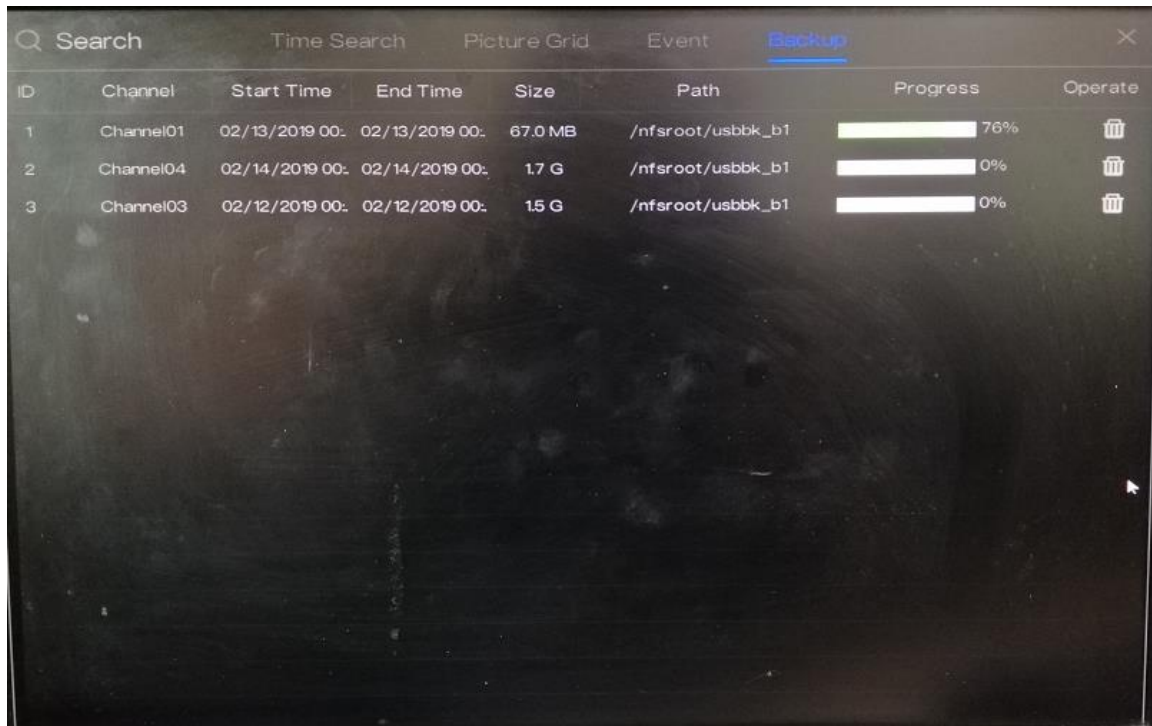
8. You can view the backup status in the **Backup** menu.



Additional Notes:

- a. You can only select one channel at time.
- b. After completing Item#7 above, you can go ahead and select other channels or other timeframe of the recordings.

The following backup of the recordings will be on queue in the **Backup** Menu.



The screenshot shows a software interface with a 'Backup' menu. The menu contains a table with the following data:

ID	Channel	Start Time	End Time	Size	Path	Progress	Operate
1	Channel01	02/13/2019 00:	02/13/2019 00:	67.0 MB	/nfsroot/usbbk_b1	76%	🗑️
2	Channel04	02/14/2019 00:	02/14/2019 00:	1.7 G	/nfsroot/usbbk_b1	0%	🗑️
3	Channel03	02/12/2019 00:	02/12/2019 00:	15 G	/nfsroot/usbbk_b1	0%	🗑️