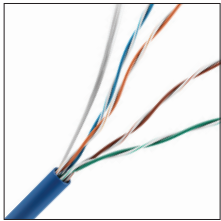


CAT 5E PLENUM CABLE

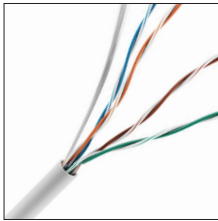
24/4 CMP/FT6 PULL BOX



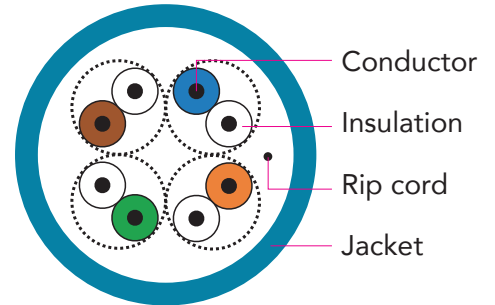
SPEC SHEET



OE-CAT5PBL



OE-CAT5PWH



Physical Characteristics

Conductor: 24 AWG Solid Bare Annealed Copper

Insulation: FeP (Fluorinated ethylene Propylene)

Conductor Color Code:

- Pair 1: Blue - White/Blue
- Pair 2: Orange - White/Orange
- Pair 3: Green - White/Green
- Pair 4: Brown - White/Brown

Rip Cord: Applied longitudinally under jacket

Jacket: Plenum PVC (Low-Smoke, Flame-Retardant and RoHS compliant)

Jacket Legend:

- 0000FT CAT 5E 4 PR 24 AWG E507576 (UL) CMP c(UL)us FT6 75C (RoHS)
- UL VERIFIED TO TIA-568C.2 CAT 5E ##### RM# A B C D E F 1 2 3 4 5 6 7 8 9

Nominal Cable Diameter (in.): 0.200

Nominal Cable Net Weight (lbs./1000ft.): 21.60

Minimum Bend Radius (in.): 1.0

Maximum Pulling Force (lbs.): 25

Temperature Rating (°F):

- Installation: +32 to +140
- Storage & Operation: -4 to +167

Operating Voltage: 300V

Applications

IEEE802.3: 1000BASE-T (Gigabit Ethernet),
100 BASE-TX, 10 BASE-T, 155Mp/s,
622Mp/s ATM, ANSI x 3.263: 100Mb/s,
4/16 Mb/s Token Ring, Broadband and
Baseband Analog Video



For more information contact
your ADI Sales person or visit
adiglobal.com/adiexclusivebrands

CAT5E PLENUM CABLE

24/4 CMP/FT6 PULL BOX



Standard Compliance

- ANSI/TIA-568-C.2
- ANSI/TIA-862 (Building Automation)
- IEC 1180 Ed.2.0 (Class D)
- ICEA S-90-661 (Category 5e)
- NEC/CEC Type CMP (NFPA 262) for Plenum
- UL 444
- RoHS Compliant Directive 2011/65/EU

Certifications



Certifications for Management System

ISO9001: 2008, ISO14001: 2004, OHSAS 18001

Electrical Characteristics

Max. Capacitance (nF/100m @ 1 kHz)	Max. DC Resistance (Ω /100m @ 68°F)	Dielectric Strength (DC-kV, 2s)	Characteristic Impedance (Ω 1~100 MHz)
5.6	9.38	2.5	100 \pm 15

Frequency MHz	Insertion Loss Max. db/100m	NEXT Min. db/100m	PSNEXT Min. db/100m	ACRF Min. db/100m	PSACRF Min. db/100m	Return Loss Min. db/100m	PD Max. ns/100m	PD Skew Max. ns/100m
1	2.0	65.3	62.3	63.3	60.8	20.0	570	45
4	4.1	56.3	53.3	51.8	48.8	23.0	552	45
10	6.5	50.3	47.3	43.8	40.8	25.0	545	45
16	8.2	47.2	44.2	39.7	36.7	25.0	543	45
20	9.3	45.8	42.8	37.8	34.8	25.0	542	45
31.25	11.7	42.9	39.9	33.9	30.9	23.6	540	45
62.5	17.0	38.4	35.4	27.9	24.9	21.5	539	45
100	22.0	35.3	32.3	23.8	20.8	20.1	538	45
200	32.4	30.8	27.8	17.8	14.8	18.0	537	45
350	44.9	27.1	24.1	12.9	9.9	16.3	536	45

* Spec meets ANSI/TIA/eIA 568 C.2 standard. Sweep Tested to 350Mhz. All values are db/ 100 m (328ft).



For more information contact
your ADI Sales person or visit
adiglobal.com/adiexclusivebrands