

A robust door entry monitor

A new and innovative range of door entry monitors: robust, extremely easy to install, and even easier to configure thanks to NFC technology. Available as a hands-free or handset version.

Logos: designed just for you.

COMELIT PRO[®]
WITH • YOU • ALWAYS



Logos



Logos door entry monitors embody the essence of our **corporate vision**: attention, innovation, accessibility and style. We have taken **our customers' feedback** to heart, carefully listening to **market needs** and demands, and have worked relentlessly to develop a product that **exceeds** expectations. The result is a product range that meets the needs of anybody seeking a cutting-edge, **high-performing solution**. We are also committed to **protecting the environment**: with our packaging made of 100% paper and cardboard, we make recycling easier and contribute to preserving our planet. With the Logos door entry monitors, we bring an elegant, sustainable and **robust object** into the homes of all our customers.

Edoardo Barzasi, Comelit CEO

A handwritten signature in black ink, reading 'Edoardo Barzasi'.

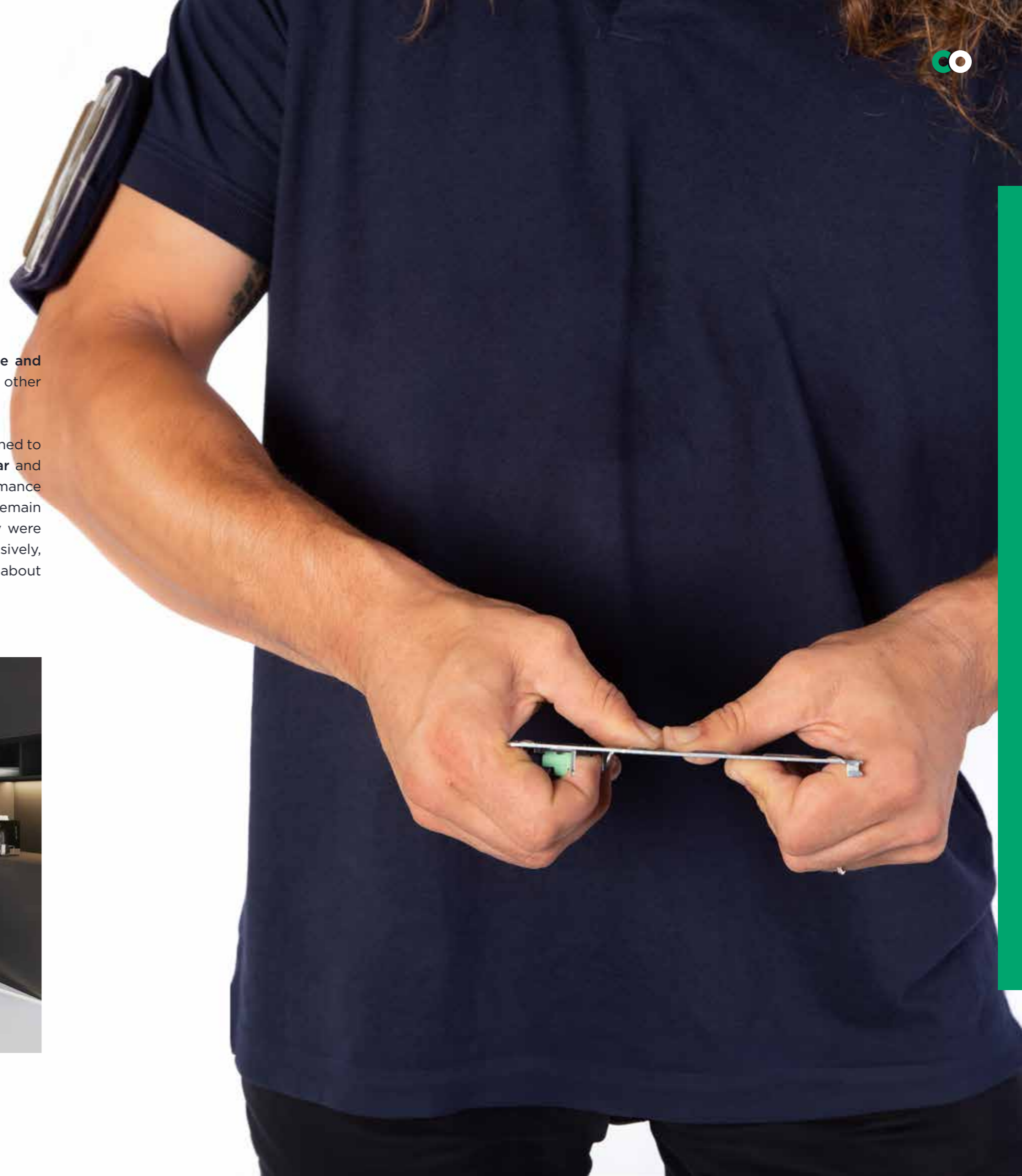
WATCHWORD: ROBUSTNESS.

Designed to be **long-lasting**, retaining their shape and ensuring consistent performance over time: the use of quality materials and state-of-the-art components was one of our priorities throughout the development process.

Made of galvanised steel, the **1.5 mm thick metal backplate** ensures perfect installation on any kind of wall, and even on **uneven surfaces**. You will not only save time when installing it, but you

will also have an extremely **stable and robust** product that outperforms other models available on the market.

Our door entry monitors are designed to **withstand everyday wear and tear** and maintain their high levels of performance over the years. These devices will remain as reliable and functional as they were on day one, even when used intensively, so there is no need to worry about **accidental damage**.



MAGICAL CONFIGURATION.

In a vast area such as that of door entry monitor **configuration**, we have set out to be innovative by creating a **truly unprecedented** experience and offering complete freedom when choosing the configuration, making it **easier** than ever before.

We can proudly say that we are the first to bring door entry monitor configuration to the next level, and this is thanks to NFC technology. It is an **extraordinary** advantage, as it allows **up to 10 times** faster set-up times than traditional configuration. By simply tapping your smartphone and

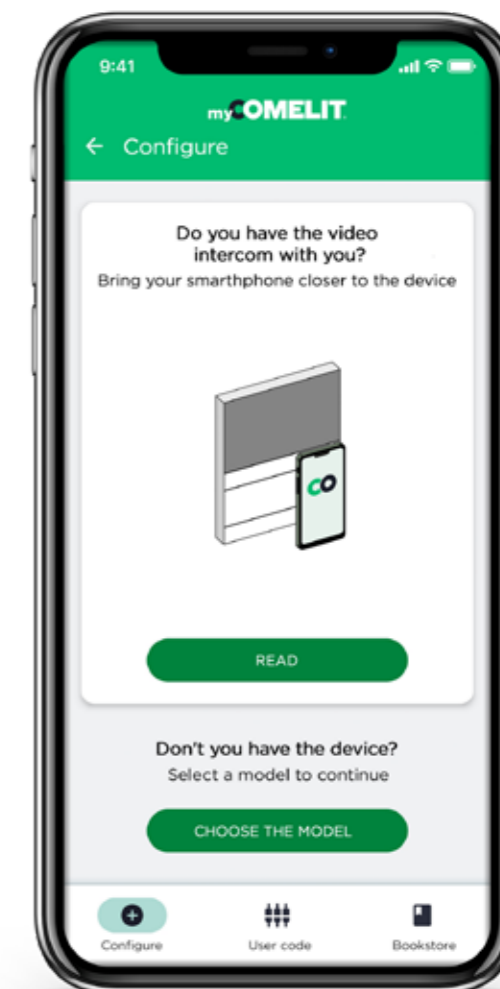
with our MyComelit app, you can access a whole new world of possibilities. All you need to do is enter the relevant section, set the parameters you want, hold your phone close to the product, and you're done! And there is more: you can set up your door entry monitors even when they are disconnected. It may seem impossible to believe, but they can be set up **directly inside the box**, without even having to open it!

Blocks of flats is where convenience reaches new heights. After having set the parameters on the first door entry monitor,

Step into the Future with NFC technology!

you can save the configuration and apply it to all the others without having to lift a finger. Time is of the essence, which is why we have taken care of everything! Save standard or custom configurations, ready for your next projects, so that you are always one step ahead.

- UP TO 10 TIMES FASTER SET-UP TIME
- PROGRAMME DOOR ENTRY MONITORS EVEN WITHOUT TAKING THEM OUT OF THE BOX
- CREATE A CONFIGURATION IN THE OFFICE AND SEND IT TO YOUR COLLABORATORS VIA WHATSAPP
- COPY THE CONFIGURATION OF A DOOR ENTRY MONITOR AND APPLY IT TO A NEW ONE WITH 2 SIMPLE TAPS
- SAVE STANDARD CONFIGURATIONS SO THAT YOU CAN USE THEM AGAIN ANYTIME YOU WANT
- SET UP THE SYSTEM BEFORE YOU RECEIVE THE DOOR ENTRY MONITORS



**WITH
YOU
ALWAYS**

Do you prefer traditional configurations? Don't worry! We have kept a simple single DIP switch bank on the back of the door entry monitor for setting the user code, and the other configuration steps are a piece of cake. In fact, a user-friendly wizard will guide you through the process by using the side buttons on the devices.



**Uncompromising
installation:
no masonry work,
just style!**

HASSLE FREE.

Our priority is making sure that installing a door entry monitor is an **easy and smooth** experience. With its **metal backplate** and quick hang up and pick up function, you will be able to install the door entry monitor with ease and quickly. It does not matter whether the wall is smooth or asymmetrical: our device perfectly adapts **to any surface** and to all flush-mounted boxes commonly available on the market. In addition, this new series has the same **backplate wiring** system as its predecessors: in fact, it was widely popular in the past and enables cables to be connected easily and smoothly, without having to struggle to hold the door entry monitor in one hand! Save **precious time** and enjoy the peace of mind that comes with a **hassle-free** installation.

**WITH
YOU
ALWAYS**

Each Logos door entry monitor comes with the **1214/2C** line distribution terminal, which is included in the package and in the price. **Only with Comelit** will you never need to purchase it separately for each door entry monitor, as it comes ready to use straight out of the box!



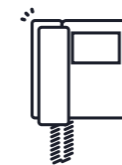
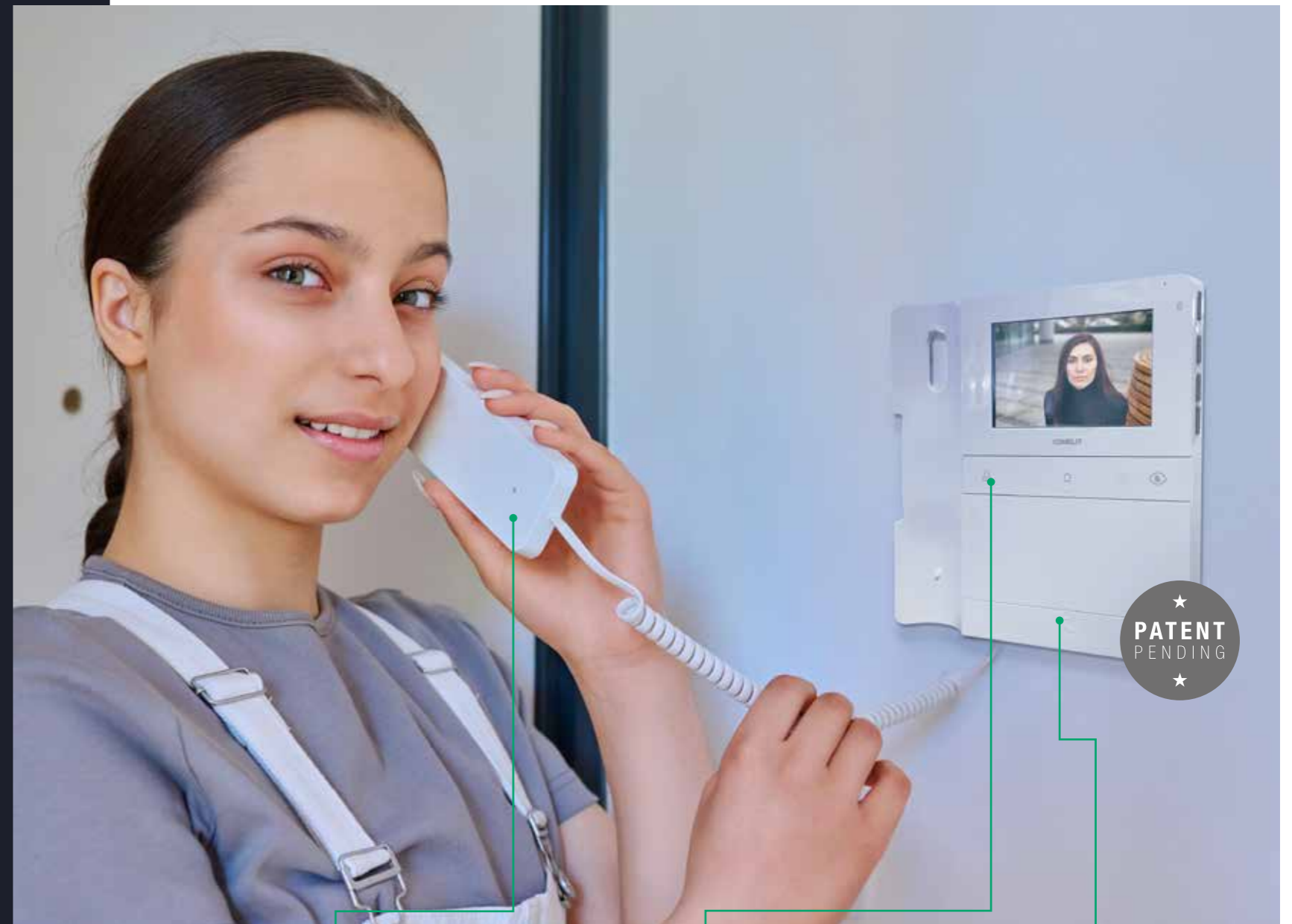
A door entry monitor suitable for everyone.

INTUITIVE EXPERIENCE.

Logos door entry monitors are the result of collective listening, and were therefore designed to provide increased accessibility: all models have **mechanical buttons** with tactile and audible feedback, ensuring that every action is carried out with absolute certainty. This option is especially popular with older people, who find it reassuring to get clear confirmation that they have pressed the buttons. And that's not all: the two rows of buttons have tactile markings for visually impaired people, so that everyone can find the buttons easily, breaking down **barriers** for users.

- THE "ANSWER" AND "END" BUTTONS ARE PURPOSEFULLY DIFFERENT AND FAR APART FROM ONE ANOTHER, AND ARE BACKLIT IN GREEN AND RED AS ON A SMARTPHONE TO AVOID MIXING THEM UP.
- HANDSET WITH EASY AUTO HANG UP TO AVOID UNWANTED DROPPING OR ACCIDENTAL BREAKAGE.
- SILENT MODE TO RECEIVE CALLS WITHOUT BEING DISTURBED BY THE RINGTONE.
- BROWSABLE MENU ON THE SCREEN WITH SIDE BUTTONS FOR ADJUSTING RINGTONE VOLUME, CONTRAST, BRIGHTNESS AND TONE.

Logos door entry monitors are exactly what you have been waiting for.



Handset with easy auto hang up
to avoid accidental dropping.



Micromechanical buttons
with tactile and audible feedback.

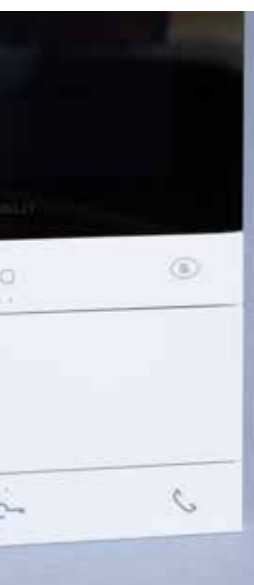
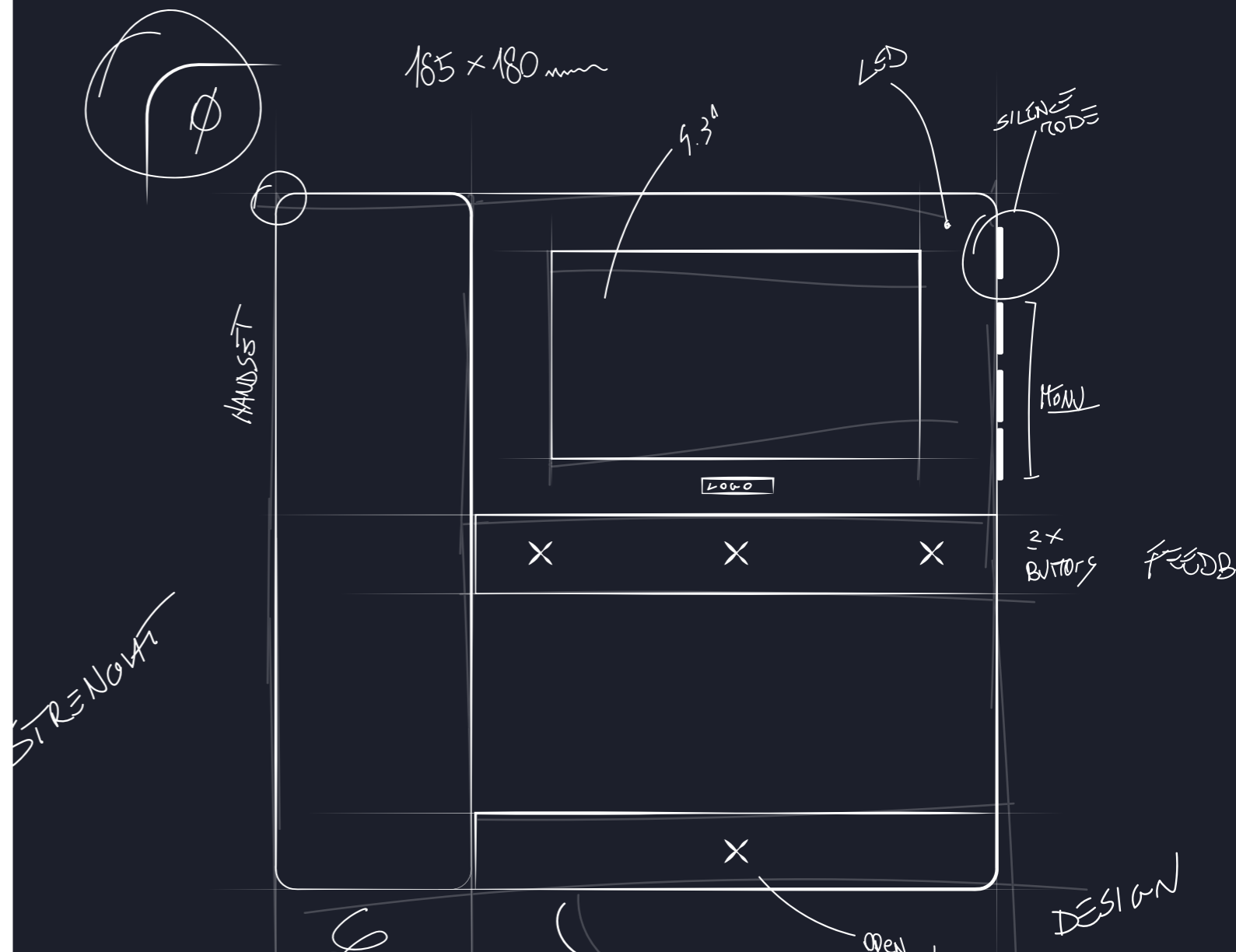


Tactile markings
for visually impaired users.

VERSATILE ELEGANCE.

The design of Logos door entry monitors is one of their true strengths, since it gives our new door entry monitors an unparalleled touch of **elegance and style**. Not only are they exceptionally robust, but their compact design also blends in perfectly in any setting, whether they are installed on an existing system or on a new one. Their size was carefully chosen in order to ensure **flexibility** when installing them, and they are also designed in such a way that **minimal** masonry work is required in the event of replacements. With their clean and simple lines, Logos door entry monitors are perfectly **suited** to all types

of buildings, whether classic or modern, traditional or minimalist. The **handset version** is an outstanding feature of our range of Logos door entry monitors, and it is extremely important as well: in fact, it is still very much in demand. Nowadays, technology is evolving at a rapid pace, and we are one of very few manufacturers who still offer this option on the market in order to meet the needs of users who prefer a traditional communication experience, for example in noisy environments or in environments where it is essential to keep communications confidential.



COMELIT → HANDSET 9.3"



AN ECO-FRIENDLY CHARACTER.

Protecting the environment is one of our core values, which guides us in everything we do here at Comelit. We care about the future of our planet and we want to contribute to a better world. Our new Logos door entry monitors are among the most **energy-efficient on the market**. We have invested in state-of-the-art technology so that we can offer high-performing products that are also sustainable.

But that's not all: packaging is also an essential part of our environmental commitment. In fact, we chose **sustainable materials** in order to reduce our environmental impact. We also use water-based inks when printing, thus eliminating the use of harmful chemical solvents. This choice not only safeguards the environment, but also ensures greater safety for all of us and for the planet.

By choosing our products, you will be making a conscious choice for a **better future**. A future in which beauty and functionality go hand in hand with environmental responsibility. Together, we can build this future.



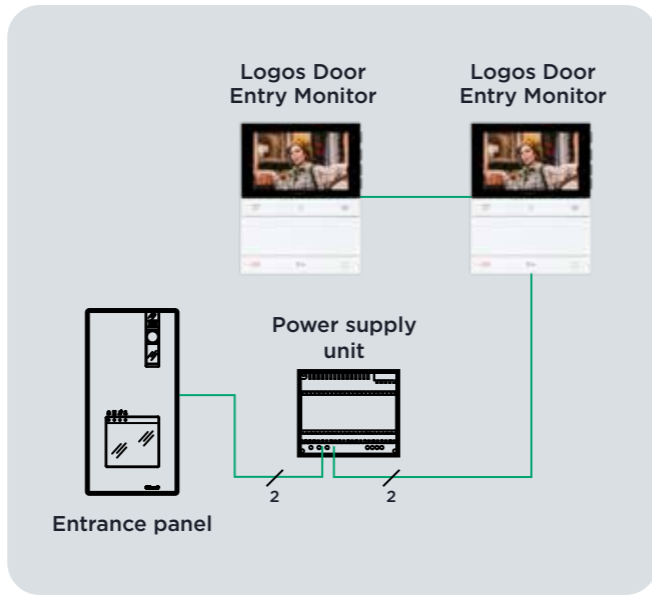
Quick and easy disposal: once you have completed the installation, you no longer have to worry about sorting the different waste materials. You can throw everything you find in the box, and even the box itself, in the **paper and cardboard** bin. No more stressing over complicated recycling rules!



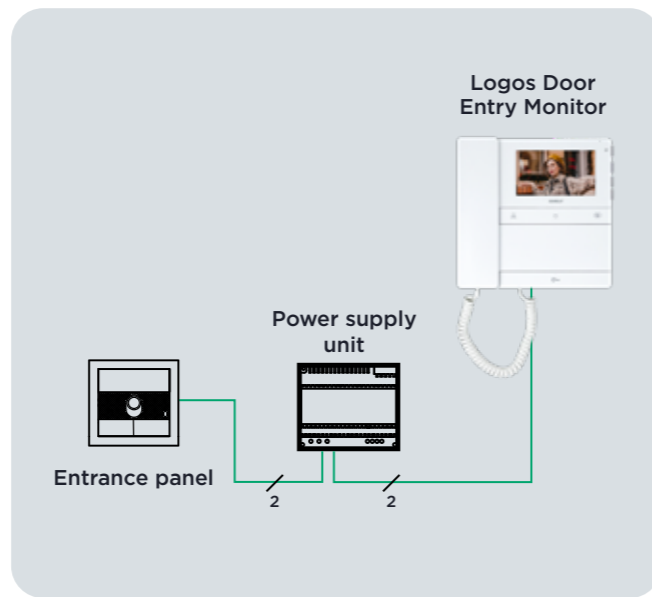
PERFECT FOR ALL SETTINGS.



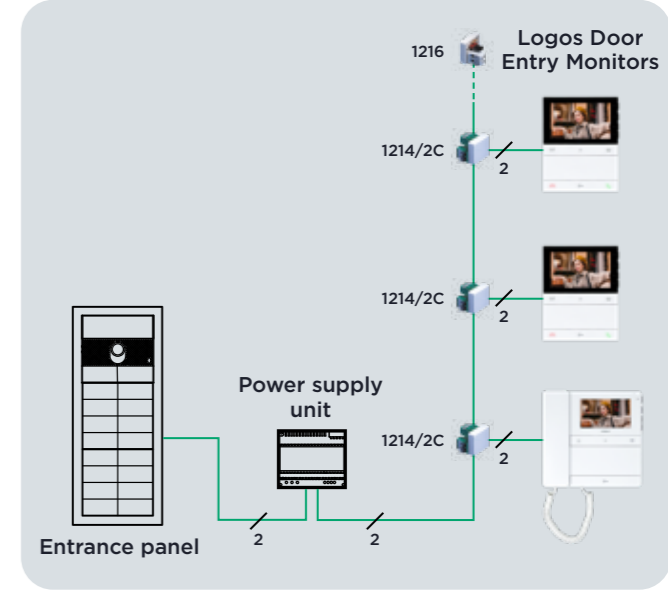
FOR VILLAS OR SINGLE-FAMILY TO FOUR-FAMILY SETTINGS



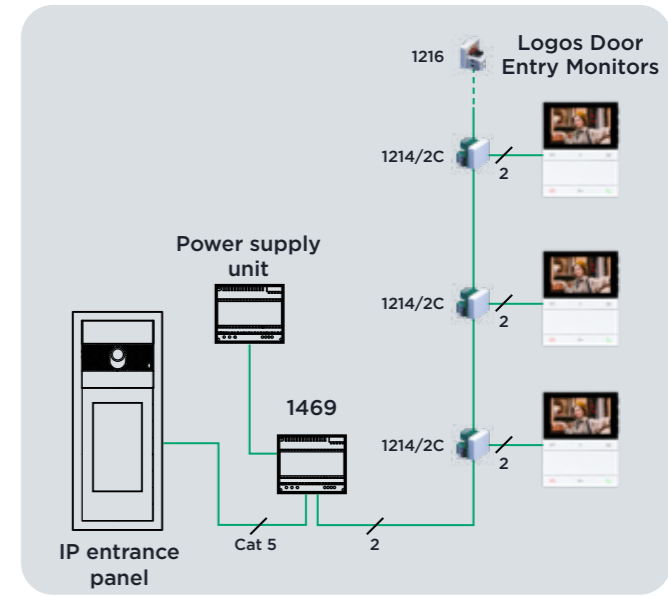
FOR COMMERCIAL AND INDUSTRIAL ACTIVITIES



FOR BLOCKS OF FLATS OR MULTIFAMILY SETTINGS



FOR IP SYSTEMS (with the addition of module 1469)



Find out more about the option of creating a hybrid IP and 2-wire solution.



HANDS-FREE 5"

LS8731



- 1 5-inch screen
- 2 Speaker
- 3 Microphone
- 4 NFC sensor
- 5 Programmable Mechanical Buttons
 - (Default functions)
 - A Generic actuator
 - B Camera activation
 - C Answer
 - D Access point opening
 - E End Call
- 6 Side buttons for menu navigation
- 7 Silent mode button
- 8 Video memory
- 9 Metal backplate

The LS8731 door entry monitor enables you to manage time bands for activating/deactivating the following functions:

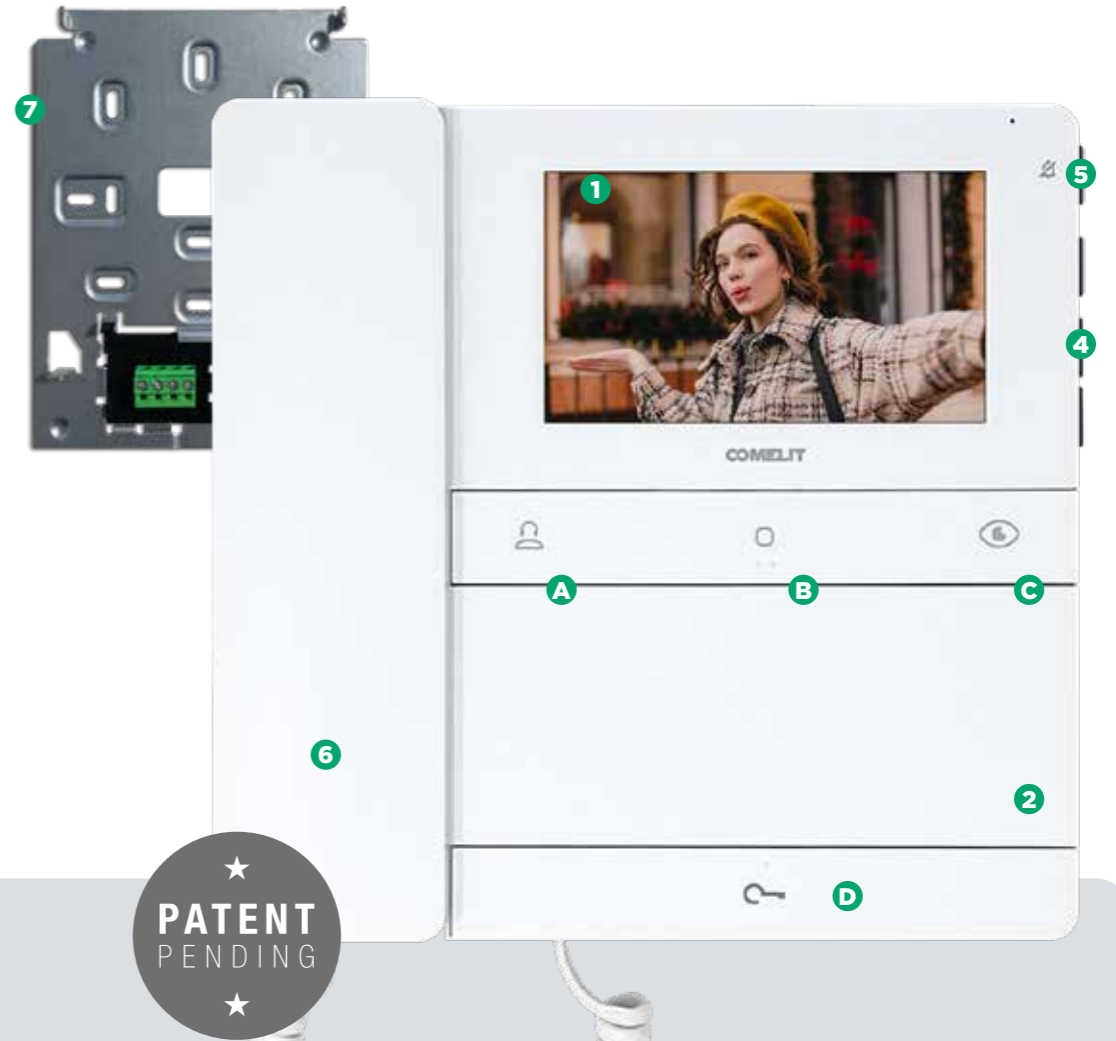
- Automatic answer
- Automatic lock-release on receipt of call
- Silent mode

Technical specification



HANDSET 4.3"

LS8701



- 1 4.3-inch screen
- 2 NFC sensor
- 3 Programmable Mechanical Buttons
 - (Default functions)
 - A Call to switchboard
 - B Generic actuator
 - C Self-ignition
 - D Access point opening
- 4 Side buttons for menu navigation
- 5 Silent mode button
- 6 Handset
- 7 Metal backplate

PATENT PENDING

Technical specification



CODES LIST.



LS8701

LOGOS DOOR ENTRY MONITOR W/HANDSET 4.3. SB2

Logos series surface-mounted door entry monitor with handset and 4.3-inch colour display. Simplebus 2 system. It has 4 programmable mechanical buttons, which are pre-configured to trigger the actions that the user uses most: electric lock, switchboard call, control of an actuator, and self-activation. On the side of the door entry monitor there are buttons for setting the Silent mode, with related graphic and visual signals, as well as buttons for accessing the menu and for navigation. In the menu, the user can set the brightness, contrast, colour and ringtone volume, among other settings. As for the ringtone, the user can also choose from several melodies. The buttons at the centre of each row are tactile so that they can be easily identified by the visually impaired. It comes standard with the floor door call. The floor door call input can also be configured to remotely control the key button, an actuator (generic or with code) or send a panic call. The door entry monitor is equipped with NFC connection to fully programme the device using a smartphone and the MyComelit app, even if the door entry monitor is switched off. The metal backplate, which ensures that it is firmly and securely fixed, and the riser distribution terminal (item 1214/2C) are supplied. Dimensions (L x H x D): 186 x 180 x 35 mm



LS8731

HANDS-FREE LOGOS DOOR ENTRY MONITOR 5. SB2

Logos series hands-free, surface-mounted door entry monitor with 5-inch colour display. Simplebus 2 system. It has backlit buttons for the audio and to end communication as well as 4 programmable mechanical buttons, which are pre-configured to trigger the actions that the user uses most: electric lock, video memory, control of an actuator, and self-activation. On the side of the door entry monitor there are buttons for setting the Silent mode, with related graphic and visual signals, as well as buttons for accessing the menu and for navigation. In the menu, the user can set the brightness, contrast, colour and ringtone volume, among other settings. As for the ringtone, the user can also choose from several melodies. The buttons at the centre of each row are tactile so that they can be easily identified by the visually impaired. It comes standard with the floor door call. The floor door call input can also be configured to remotely control the key button, an actuator (generic or with code) or send a panic call. The door entry monitor is equipped with NFC connection to fully programme the device using a smartphone and the MyComelit app, even if the door entry monitor is switched off. The metal backplate, which ensures that it is firmly and securely fixed, and the riser distribution terminal (item 1214/2C) are supplied. Dimensions (L x H x D): 135 x 170 x 23 mm



AC6711

ADAPTATION FRAME FOR DOOR ENTRY MONITOR

Adaptation frame for the Logos series door entry monitor, to be used when replacing a previous series of door entry monitors to finalize mounting. Dimensions (L x H x D): 230 x 220 x 3 mm



AC6719

SURFACE-MOUNTED DOOR ENTRY MONITOR HANDSET

Surface-mounted support for Logos door entry monitor with handset, allowing external routing of cables. Dimensions (L x H x D): 177 x 171 x 9.7 mm



AC6720

SURFACE-MOUNTED HANDS-FREE DOOR ENTRY MONITOR

Surface-mounted support for Logos hands-free door entry monitor, allowing external routing of cables. Dimensions (L x H x D): 135 x 158 x 17 mm



AC6732

DESK BASE FOR DOOR ENTRY MONITOR

Desk base installation accessory for Logos series door entry monitors. Dimensions (L x H x D): 135 x 110 x 122.5 mm



LS9461M

QUADRA AND LOGOS KIT WITH HANDSET. SB2

Single-family kit consisting of Quadra series entrance panel (product 4893M) and Logos series door entry monitor with handset (product LS8701), Simplebus 2 system. The entrance panel has call buttons to expand the kit for up to 4 residences. Up to 4 door entry monitors (available to purchase separately) can be installed in each residence. Plus, the kit can be expanded with additional panels using optional accessories. The kit is supplied pre-programmed, ready to use and with all the accessories required to create the system. Suitable for installation in homes, commercial properties or offices.



LS9431V

QUADRA AND LOGOS 5 HANDS-FREE KIT. SB2

Single-family kit consisting of Quadra series entrance panel (product 4893M) and Logos series hands-free door entry monitor (product LS8731), Simplebus 2 system. The entrance panel has call buttons to expand the kit for up to 4 residences. Up to 4 door entry monitors (available to purchase separately) can be installed in each residence. Plus, the kit can be expanded with additional panels using optional accessories. The kit is supplied pre-programmed, ready to use and with all the accessories required to create the system. Suitable for installation in homes, commercial properties or offices.



MyComelit.

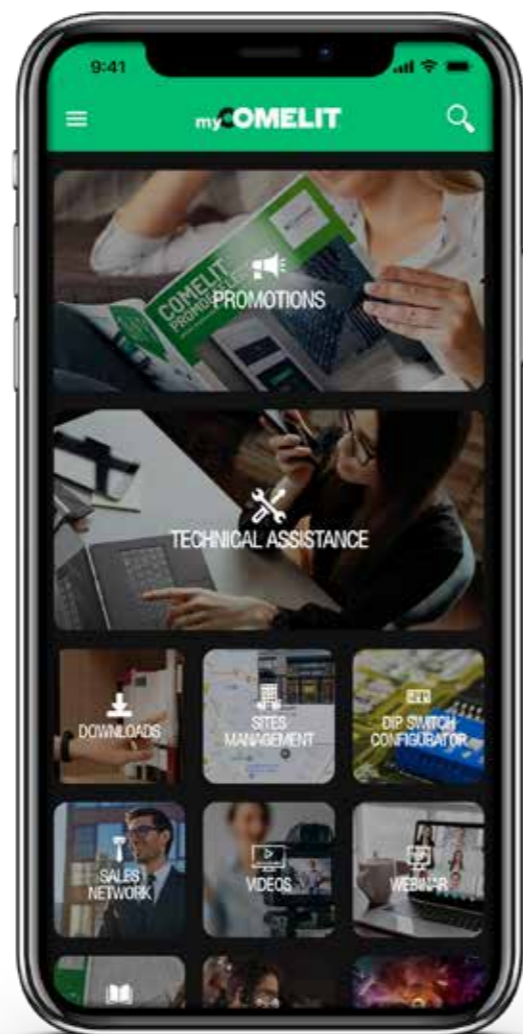
THE APP YOU WON'T BE ABLE TO DO WITHOUT.

Simple, straightforward and customised.

Thanks to all the services provided, MyComelit makes work easier for all industry professionals: Installers, Draughtsmen, System integrators, Security managers, Building managers and Architects.



- Access all technical, application-related, and commercial information about our products, such as catalogues, manuals and technical data sheets, in one convenient location.
- Stay informed about the latest news and offers, including promotional deals, online and on-site training, services, and new products.
- Easily set up and save your door entry monitors in your reserved area.
- Receive technical and commercial support for system design.
- Manage and monitor your connected systems and receive notifications about product status for prompt assistance in case of anomalies.
- Edit the names of Ultra entrance panels (in the Touch or digital Directory versions) via Bluetooth connection.



Comelit.

A GROUP OF 900 PEOPLE DRIVEN BY THE SAME SPIRIT.



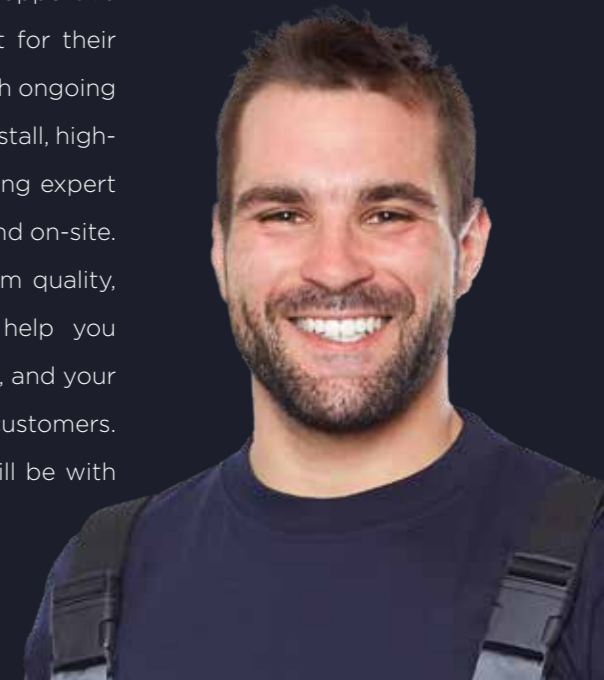
For over 65 years, we have been innovating and shaping the door-entry phone and monitor industry, honing our expertise in meeting installation needs for simplicity, reliability and multi-functionality.

Our strong values and global vision have led to the establishment of a well-run, well-structured organisation with 10 international branches, 900 employees, 6 R&D centres and a presence in over 90 countries. We offer a comprehensive range of security solutions, including door entry monitors, anti-intrusion, video surveillance, home automation, fire protection and access control systems, positioning us as a single partner for protecting people and their environment.

With You. Always.

**OUR PROMISE,
OUR COMMITMENT.**

Our daily goal is to be a reliable and supportive partner for those who choose Comelit for their customers. We demonstrate this through ongoing research and development of easy-to-install, high-performing solutions, as well as providing expert advice and assistance over the phone and on-site. We pride ourselves on offering premium quality, reliable products and systems that help you succeed, as your success is our success, and your satisfied customers are our satisfied customers. With Comelit, you can trust that we will be with you every step of the way.



ITALY

FRANCE

SPAIN

GERMANY

SINGAPORE
HONG KONG
INDONESIA
VIETNAM

UNITED KINGDOM
IRELAND

NETHERLANDS

BELGIUM

USA

UNITED ARAB
EMIRATES



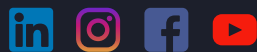
SOUTHERN OFFICE

Unit 2B The Quad • Butterfield Business Park • Luton •
Bedfordshire • LU2 8EF • UK •

NORTHERN OFFICE

Waterside Court • 1 Crewe Road • Manchester • M23 9BE • UK •

www.comelitgroup.com



code
2G32001292



The brands and trade names cited in this publication are the property of their respective owners.
Product dimensions derived from the images are purely indicative.