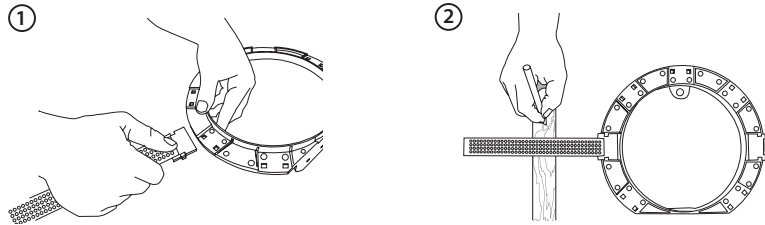


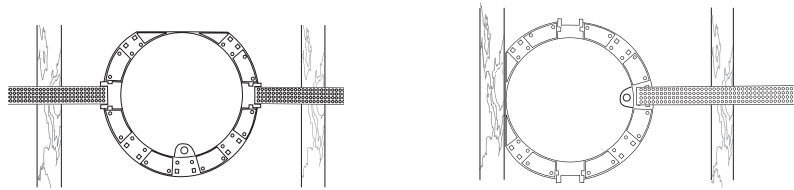
# IN-CEILING BRACKETS

## INSTALLATION INSTRUCTIONS

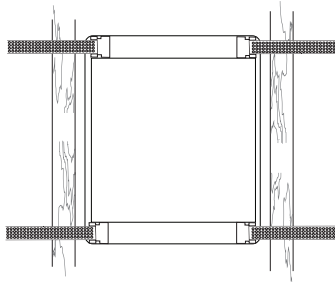


(Temporary wire holder should be removed prior to speaker installation.)

ES-BRKT-IC-6, ES-BRKT-IC-8, ES-BRKT-POINT-6



ES-BRKT-ICLCR-5

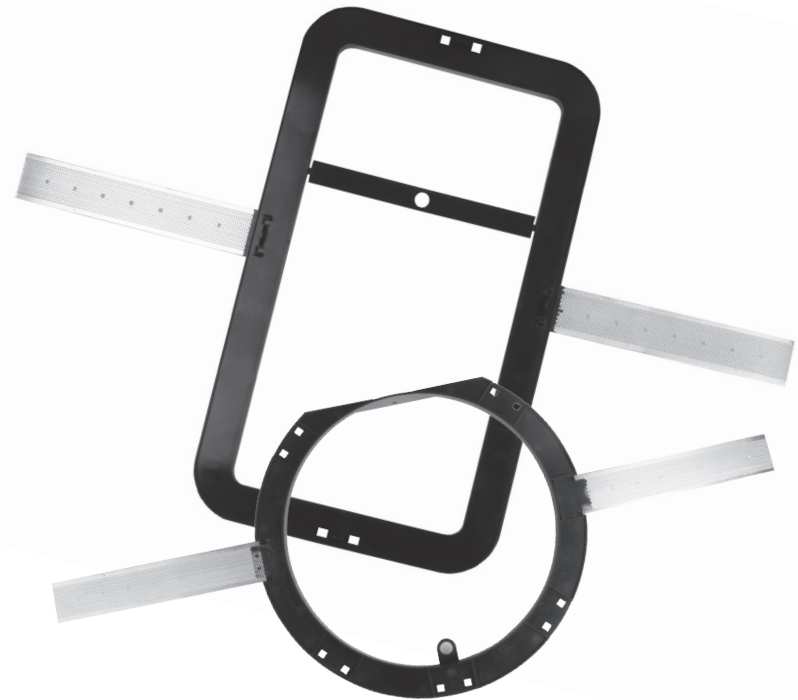


engineered by  
**Snap**  
av

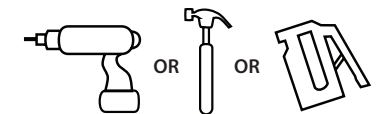
## OWNER'S MANUAL

## >> Speaker Brackets

For use with Episode® ES-Series  
In-Wall and In-Ceiling Speakers



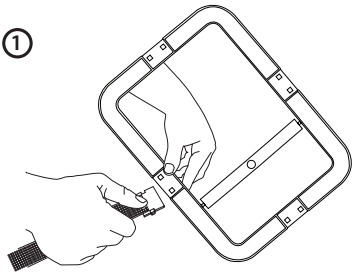
TOOLS NEEDED:



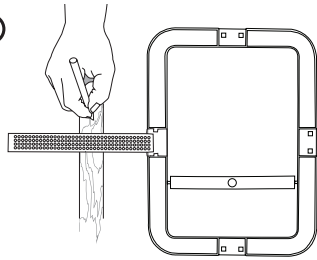
# IN-WALL BRACKETS

## INSTALLATION INSTRUCTIONS

①

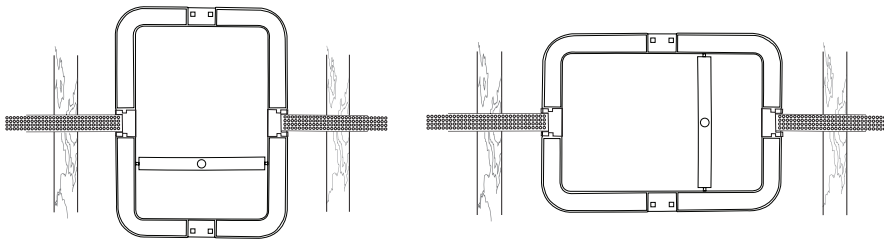


②

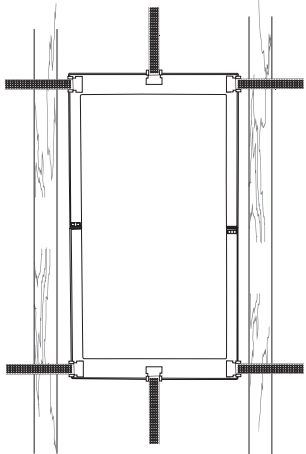


(Temporary wire holder should be removed prior to speaker installation.)

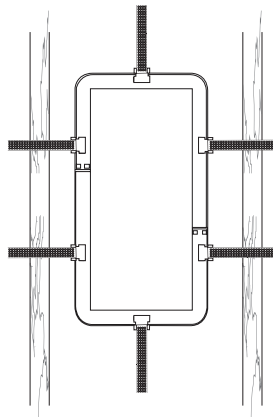
## ES-BRKT-IW-6, ES-BRKT-IWLCR-5



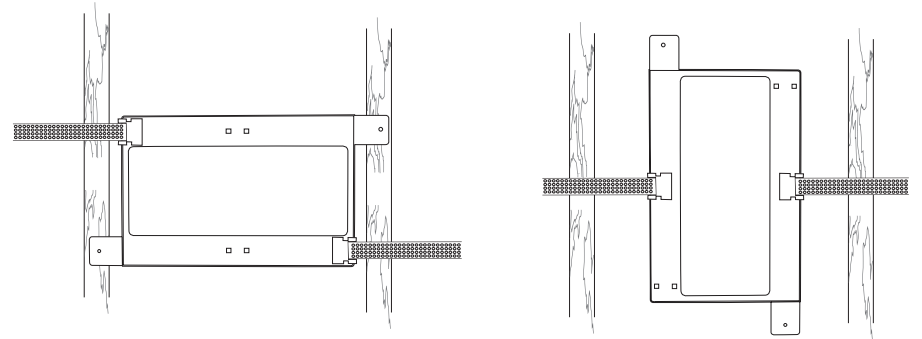
## ES-BRKT-IW-SUB-DUAL8



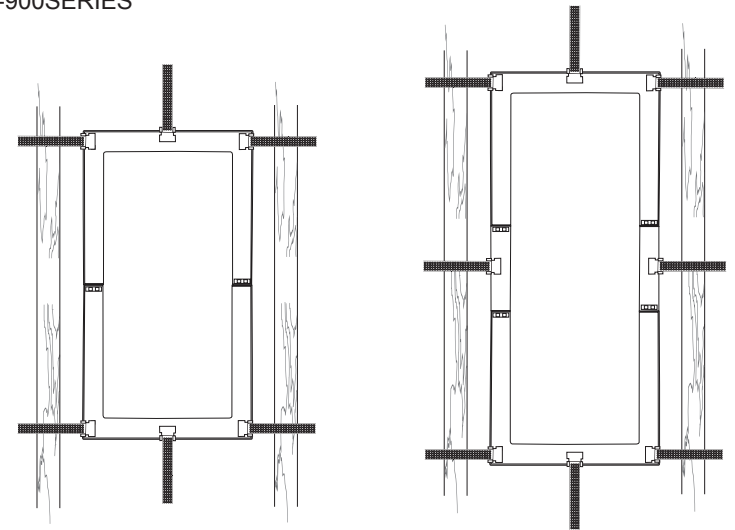
## ES-BRKT-IWLCR-6



## ES-BRKT-IWLCR-4



## ES-BRKT-IW-900SERIES



For 900 models

For 950 models