



# IP69K

## PRODUCTS

From Federal Signal

THE **BROADEST LINE**

OF **IP69K** COMPLIANT PRODUCTS  
IN THE INDUSTRY



Products for dust-tight environments, that withstand high-pressure and high-temperature washdowns.

# What is IP69K?

IP69K is the highest standard on the Ingress Protection (IP) rating scale. This rating was designed for applications in which products are regularly exposed to high-pressure and high-temperature washdowns. IP69K ensures the highest confidence in harsh environments where sanitation and cleanliness are required.

IP69K products are ideal for applications in:

- Food and Beverage
- Wastewater
- Pharmaceutical
- Marine
- Medical Facilities
- Medical Equipment Manufacturing

IP69K products help reduce product failures due to water/dust ingress, increasing productivity and decreasing production downtime.

## IP rating system

The IP rating system is defined in international standard IEC 60529.

IP ratings are used to classify and define levels of ingress protection on electrical devices against solids and water. By defining a rating, the IP system ensures specific levels of coverage when products are faced with varying elements.



## HOW IS IP69K DIFFERENT FROM NEMA TYPE 4?

Both standards require the product to withstand water but at different levels. The IP69K rating is important when products are being sprayed down at closer distances.

### IP69K

- ✓ High pressure
- ✓ Low volume/  
High temperature
- ✓ Short distance  
6" max
- ✓ Dust-tight

### NEMA TYPE 4

- ✓ Low pressure
- ✓ High volume  
65 gallons/minute
- ✓ Long distance  
10–12ft

## Our products endured the following testing:



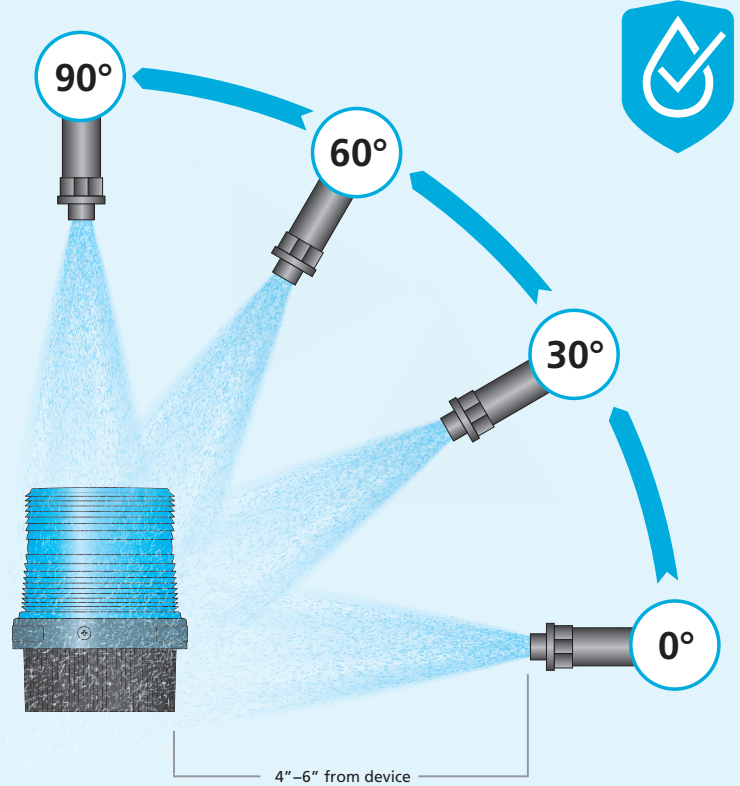
### IP69K

Dust-tight tested in an Arizona A2 Dust 2kg/m<sup>3</sup> chamber for 6 seconds at a time, every 15 minutes for five hours.



### IP69K

Testing which included high-pressure steam jet cleaning, water sprays of 1160–1450 psi every 30 seconds. The water is sprayed from 4 different angles, at a distance of 4–6 inches, and temperatures of 176°F (80°C).



Federal Signal has the  
**BROADEST SELECTION  
OF IP69K PRODUCTS!**

**WE OFFER OVER 700 MODELS**  
for safe area, hazardous and explosion proof  
applications that meet all environmental ratings.

**YOUR SAFETY  
AND SECURITY  
IS OUR PRIORITY!**

## CERTIFICATIONS

In addition to IP69K, our products have been designed to meet or exceed the uncompromising standards of UL, CSA, CSFM, IECEx, and other global certifications. And with our ISO 9001 Certification, we want you to know that we are committed to quality.



# SAFE AREA



Models 121SLED  
and 121ALED

Vitalite® Rotating LED Lights



Model 225

Electraray® Rotating LED Warning Light



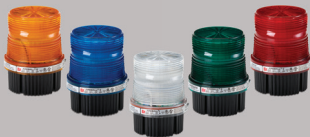
Model 350WB

Weatherproof Vibratone® Horn with Back Box



Model 371LED

Commander® LED Rotating Beacon



Models FB2LED  
and FB2LED-QC

Fireball® LED Light

Models FB2PST  
and FB2PST-I

Fireball® Strobe Lights

Model FB24ST

Fireball® Supervised Strobe Light



Models FB24STHI and  
FB24STHI-024C-CN

Fireball® Supervised Hearing Impaired  
Strobe Lights



Models LP3M, LP3P  
and LP3S

StreamLine® Low Profile Strobe Lights

Models LP3SL,  
LP3PL and LP3ML

StreamLine® Low Profile Steady Burning  
LED Lights



Models PMA  
and PMAMT

Panel Mount Electronic Sounders

# SAFE AREA



**Model PMC**

Panel Mount Multifunctional LED Combination Audible/Visual Signal



**Models PMLMP and PMLST**

Panel Mount Multifunctional LED Beacons



**Models PM22L and PM22L RGB**

Panel Mount 22mm Multifunctional LED



**Model RSL**

Radiant Configurable Stack Light



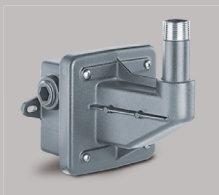
**Models LP57 and LP57 RGB**

StreamLine® Mini LED Beacon Series



**Models SLM100, SLM200, SLM300/350, SLM1400/1450 and SLMBS, SLMBD and SLMBP**

StreamLine® Modular Multifunctional LED Beacons and Mounting Options



**Model LSWB**

Wall Mounting Kit for 4X, Safe Area Applications

# HAZARDOUS LOCATION



Model 151XST

Hazardous Location Strobe Light

Model 154XST

Hazardous Location Supervised Strobe Light

Models 191XL and  
191XL-CN

Hazardous Location LED Lights



Models 154XSTHI and  
154XST-CN

Hazardous Location Supervised Fire Listed  
Strobe Lights



Model 224XST

Electraray® Supervised Hazardous Location  
Strobe Light



Model 224XSTHI

Electraray® Supervised Hearing Impaired  
Hazardous Location Strobe Light



Model 225X

Electraray® Hazardous Location Rotating LED  
Warning Light



Model 225XL

Electraray® Hazardous Location LED Flashing Light



Models 225XST  
and 225XST-I

Electraray® Hazardous Location Strobe Lights



Model 371DST

Commander® Double Strobe Hazardous  
Location Light



Model 371LEDX

Hazardous Location Commander® LED  
Rotating Light



Models FB2LEDX,  
FB2LEDX-CN, FB2LEDX-QC,  
FB2LEDX-QC-S

Fireball® Hazardous Location Single and Multicolor  
LED Lights

# HAZARDOUS LOCATION



**Model G-LED**

Global Series® LED Beacon



**Model G-STR**

Global Series® 15J and 21J Strobe



**Model 350WBX**

Vibratone® Hazardous Location Horn with Back Box



**Model 450EWBX**

Vibratone® Hazardous Location Electronic Horn



**Models 300GCX and 300GCX-CN (15W), 302GCX and 302GCX-CN (30W)**

SelectTone® Hazardous Location Amplified Speakers



**Models 304GCX and 304GCX-CN (15W), 314GCX and 314GCX-CN (15W)**

SelectTone® Hazardous Location Supervised Amplified Speakers



**Models AM300GCX (15W) and AM302GCX (30W)**

AudioMaster® Public Address Hazardous Location Speakers



**Model AM15XD2**

Public Address Hazardous Location Speaker



**Model SST3GCX-MV**

Hazardous Location Remotely Selectable Electronic Siren



**Models ASHH (15W) and ASUH (30W)**

Hazardous Location Amplified Speakers

## HAZARDOUS LOCATION



Model LHWB

Wall Mounting Bracket for Hazardous Location Applications

## EXPLOSION-PROOF



Model 27XST-024-4-MOD

Explosion-Proof Supervised Strobe Light

Model 24XST

Explosion-Proof Supervised Strobe Light

Model 27XST

Explosion-Proof Strobe Light

Model 27XL

Explosion-Proof LED Light



Model FSEX

Explosion-Proof Strobe Light



Models 24XSTHI-MOD  
and 24XSTHI-CN

Explosion-Proof Hearing Impaired Strobe Light

Model FSEX-HI

Hearing Impaired Explosion-Proof Strobe Light



Model 121X

Explosion-Proof Rotating Light



2645 Federal Signal Drive  
University Park, IL 60484  
Tel: +1 708.534.4756  
[www.fedsig.com](http://www.fedsig.com)