



## Online Double Conversion UPS

WB-UPS-OL-1000-8, WB-UPS-OL-1500-8, WB-UPS-OL-2000-8

The WattBox Double Conversion Uninterruptible Power Supplies (UPS) are packed with features to keep vital equipment running with zero transfer time to battery backup in the event of power loss, ensuring seamless operation as the inverter is already supplying the connected equipment load. This Pure Sinewave UPS provides reliable battery backup to prevent costly disruptions and offers advanced system monitoring and configuration via the included PC software. With use of up to 8 outlets you'll be able to power and protect an entire rack of equipment. Brand-new features allow partners to extend the life of their installation by connecting up to five extended battery packs, easily daisy-chaining them off the UPS. Once connected, the EBPs automatically detect and set the optimal recharge rate.



### Smart Battery Detection

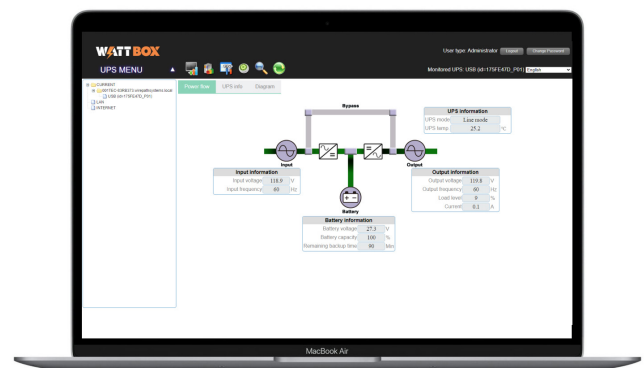
With WattBox's innovative Smart Battery Detection (SBD) circuit, adding up to five extended battery packs (EBPs) to each UPS is simple and streamlined. Start by daisy-chaining the first EBP directly to the UPS using the included cable, then daisy-chain additional EBPs to each other – no need for separate power sources.

### Double Conversion UPS

Online Double Conversion technology in a UPS (Uninterruptible Power Supply) stands out because it provides seamless power delivery with zero transfer time to battery backup during an outage. It works by constantly converting incoming AC power to DC and then back to AC, ensuring uninterrupted power delivery. This approach eliminates any power drops and isolates the connected devices from fluctuations in the input power, making it ideal for sensitive or critical equipment.

### Custom Installation

With included PC software, RS-232 port, and USB port, you can configure this UPS to your liking, allowing for true custom installation.



# Online Double Conversion UPS

Model		WB-UPS-OL-1000-8	WB-UPS-OL-1500-8	WB-UPS-OL-2000-8
Capacity		1000VA/1000W	1500VA/1500W	2000VA/2000W
<b>Input</b>				
Voltage Range	Low Line Transfer	80VAC/70VAC/60VAC/55VAC ± 5 % (based on load percentage 100% - 80% / 80% - 70% / 70% - 60% / 60% - 0)		
	Low Line Comeback	87VAC/77VAC/67VAC/62VAC ± 5 %		
	High Line Transfer	150 VAC ± 5 %		
	High Line Comeback	145 VAC ± 5 %		
Frequency Range		40Hz ~ 70 Hz		
Phase		Single phase with ground		
Power Factor		≥ 0.99 @ full load; ≤ 5% @ 160-265VAC or 80-140VAC		
THDI		≤ 5% @ 160-265VAC or 80-140VAC, THDU < 1.6% @ input and full linear load condition		
<b>Output</b>				
Output Voltage		100/110/115/120/125/127 VAC**		
AC Voltage Regulation		± 1% (Batt. Mode)		
Synchronized Range (Frequency Range)		47 ~ 53 Hz or 57 ~ 63 Hz		
Frequency Range		50 Hz ± 0.1 Hz or 60Hz ± 0.1 Hz (Batt. Mode)		
Current Crest Ratio		3:1		
Harmonic Distortion		≤ 2 % THD (Linear Load) ; 4 % THD (Non-linear Load)		
Transfer Time	AC Mode to Batt. Mode	Zero		
	Inverter to Bypass	< 4 ms		
Waveform (Batt. Mode)		Pure Sinewave		
<b>Efficiency</b>				
AC Mode		≥ 89% @ full charged battery		≥ 91% @ full charged battery
ECO Mode		≥ 96% @ full charged battery		
Battery Mode		≥ 88% @ full charged battery		≥ 90% @ full charged battery
<b>Battery</b>				
Battery Type		12V/9AH	12V/9AH	
Numbers		2	4	
Recharge Time		3 hours recover to 95% capacity for internal battery@ 2A charging current		
Charging Current		Default: 2A, Max: 8A adjustable		
Charging Voltage		27.4 VDC ± 1%	54.7 VDC ± 1%	
<b>Physical</b>				
Dimension, D x W x H (in)		16.14 x 17.24 x 3.46	20.08 x 17.24 x 3.46	
Net Weight (lbs)	With Battery	25.57	42.99	
	Without Battery	14.55	20.72	
<b>Environmental</b>				
Operation Humidity		20-95 % RH @ 0- 40°C (non-condensing)		
Noise Level		Less than 50dBA @ 1 Meter (With fan speed control)		
<b>Management</b>				
Smart RS-232 or USB		Supports Windows® 2000/2003/XP/Vista/2008/7/8/10, Linux, Unix and MAC		
Optional SNMP		Power management from SNMP manager and web browser		

# Online Double Conversion UPS

## Output Power Rating

Model	Input Rating	Output Rating
WB-UPS-OL-1000-8	100-125VAC, 50/60Hz, 12A, 1Ø	100/110/115/120/125VAC, 50/60Hz, 1000VA/1000W, 1Ø, 10/9.1/8.7/8.3/8A;
WB-UPS-OL-1500-8	100-125VAC, 50/60Hz, 12A, 1Ø	100/110/115/120/125VAC, 50/60Hz, 1Ø; 1500VA/1430W,12A (@125VAC input) ; 1500VA/1300W,12.5A (@120VAC input) ; 1500VA/1270W,13A (@115VAC input) ; 1500VA/1200W,13.6A (@110VAC input) ;
WB-UPS-OL-2000-8	100-125VAC, 50/60Hz, 16A, 1Ø	100/110/115/120/125VAC, 50/60Hz, 1Ø; 2000VA/1930W,16A (@125VAC input) ; 2000VA/1850W,16.7A (@120VAC input) ; 2000VA/1740W,17.4A (@115VAC input) ; 2000VA/1640W,18.2A (@110VAC input) ; 1800VA/1500W,18A (@100VAC input)

## Runtime Chart (Internal Battery)

Model & Battery Size	WB-UPS-OL-1000-8 (9Ah x 2)	WB-UPS-OL-1500-8 (9Ah x 4)	WB-UPS-OL-2000-8 (9Ah x 4)
Battery Load Percentage	Estimated Runtime		
100.00%	2 minutes 25 seconds	4 minutes 51 seconds	2 minutes 26 seconds
90.00%	3 minutes 11 seconds	5 minutes 50 seconds	3 minutes 11 seconds
80.00%	4 minutes 8 seconds	7 minutes 16 seconds	4 minutes 40 seconds
70.00%	5 minutes 19 seconds	9 minutes 50 seconds	5 minutes 19 seconds
60.00%	6 minutes 56 seconds	11 minutes 26 seconds	7 minutes 40 seconds
50.00%	9 minutes 26 seconds	14 minutes 46 seconds	9 minutes 34 seconds
40.00%	12 minutes 55 seconds	19 minutes 57 seconds	13 minutes 12 seconds
30.00%	18 minutes 31 seconds	28 minutes 39 seconds	19 minutes 17 seconds
20.00%	29 minutes 54 seconds	41 minutes 12 seconds	31 minutes 40 seconds
10.00%	63 minutes 40 seconds	91 minutes 19 seconds	68 minutes 23 seconds



## Online Double Conversion UPS Extended Battery Pack

WB-UPS-EBP-18AH24V, WB-UPS-EBP-18AH48V

Increase runtime during an outage for your most critical devices with the WattBox 24V and 48V Extended Battery Packs. Compatible with WB-OVRC-OL- and WB-OL-UPS- Online Double Conversion UPSs, it includes a daisy-chain cable, an integrated breaker to protect the UPS, and a front-panel LED to confirm the EBP is connected and operational.

### Easy Installation with Smart Battery Detection

With WattBox’s innovative Smart Battery Detection circuit, adding up to five extended battery packs to each UPS is simple and fast. Simply daisy-chain the extended battery pack to the UPS using the included cable, and the SBD circuit will automatically detect the number of battery packs connected and set the recharge rate for the system.

### Battery Pack Specification

Model	WB-UPS-EBP-18AH24V	WB-UPS-EBP-18AH48V
Used with UPS Models	WB-UPS-OL-1000-8 WB-OVRC-OLUPS-1000-1	WB-UPS-OL-1500-8 WB-UPS-OL-2000-8 WB-OVRC-OLUPS-1500-1 WB-OVRC-OLUPS-2000-1
Battery Type	12V 9Ah	12V 9Ah
Battery Numbers	4	8
Dimensions - DxWxH (in)	14.96 x 17.24 x 3.46	18.90 x 17.24 x 3.46
Net Weight (lbs)	37.70	63.93