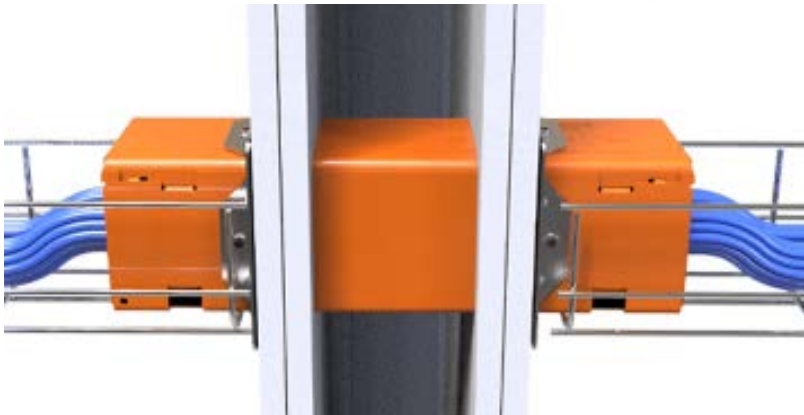
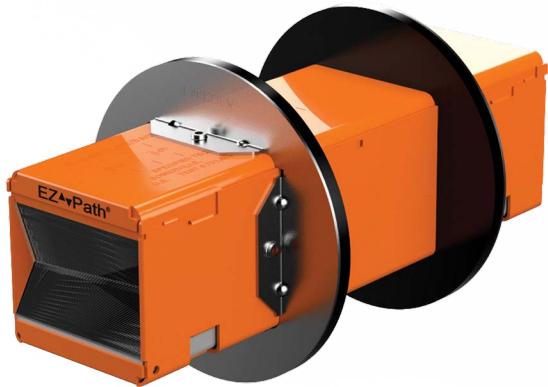


EZ Path® Series 33 Fire-Rated Pathway

The EZ Path® Series 33 Fire-Rated Pathway is a maintenance-free fire-rated pathway solution for cabling passing through fire-rated wall and floor assemblies. The Series 33 incorporates self-sealing intumescent pads that adjust automatically as cables are added or removed, eliminating the need for manual adjustment or closing. The device is available stand-alone as well as with an assortment of accessory kits to address a variety of cable penetration configurations.

Features & Benefits

- Self-sealing design, no manual closure or sealing requirement
- No sealant or putty - Easy Moves, Adds, and Changes
- Provides exceptional fire and smoke leakage ratings
- Tested for cable fills from 0 up to 100%
- Tested in round and rectangular openings
- Available in an assortment of colors



EZ Path® Series 33 Fire-Rated Pathway

ORDERING INFORMATION

Catalog Number	UPC Number	Description	(UOM) Qty.	Case Qty.	Weight (Each)
EZD33FWS	730573000045	Fire-Rated Pathway Device	1	6	2.70 lbs (1.22 kg)
EZDP33FWS	730573000342	Square Plate Kit – Device with square wall plates and labels	1	4	3.52 lbs (1.60 kg)
EZP133W	730573001332	Square Wall Plates with labels	1	1	0.81 lbs (0.37 kg)
EZDP133CWK	730573000359	Circular Plate Kit – Device with circular wall plates and labels	1	1	3.83 lbs (1.74 kg)
EZP133CW	730573001370	Circular Wall Plates with labels	1	1	0.82 lbs (0.37 kg)
EZDP133FK	730573008355	Kick in Floor Plate Kit – Device with split floor plate	1	1	3.53 lbs (1.60 kg)
EZP133K	730573008331	Kick-In Split Floor Plate	1	6	0.71 lbs (0.32 kg)

ORDERING INFORMATION - RETROFIT INSTALLATIONS

Catalog Number	UPC Number	Description	(UOM) Qty.	Case Qty.	Weight (Each)
EZDP33WR	730573005330	Retro-Fit Kit – Device with retro-fit wall mounting plates and labels	1	1	6.63 lbs (3.01 kg)
EZP133R	730573005354	Retro-Fit Mounting Plates with labels	1	1	3.57 lbs (1.62 kg)
EZDP133CAK	730573000366	Conduit Attachment Kit-Device with conduit attachment plate and label	1	1	4.05 lbs (1.84 kg)
EZP133CA	730573001387	Conduit Attachment Plate with label	1	1	0.86 lbs (0.39 kg)

ORDERING INFORMATION - GANG INSTALLATION

Catalog Number	UPC Number	Description	(UOM) Qty.	Case Qty.	Weight (Each)
EZDP233GK	730573002353	Two-Gang Kit – Two (2) devices with two-gang plates and labels	1	1	6.48 lbs (2.94 kg)
EZP233W	730573002339	Two-Gang Wall Plates with labels	1	1	0.79 lbs (0.36 kg)
EZDP333GK	730573903353	Three-Gang Kit – Three (3) devices with three-gang plates and labels	1	1	9.10 lbs (4.13 kg)
EZP333W	730573003336	Three-Gang Wall Plates and labels	1	1	1.03 lbs (0.47 kg)
EZDP433GK	730573004357	Four-Gang Kit – Four (4) devices with four-gang plates and labels	1	1	13.06 lbs (5.92 kg)
EZDP433GK-C	730573004364	Color Coded Four-Gang Kit Four (4) Devices (1-orange, 1-blue, 1-yellow, 1-white) with four-gang plates and labels	1	1	12.75 lbs (5.78 kg)
EZP433W	730573004333	Four-Gang Wall Plates and labels	1	1	1.73 lbs (0.78 kg)
EZDP733GK	730573007358	Seven-Gang Kit – Seven (7) devices with seven-gang plates and labels	1	1	21.82 lbs (9.90 kg)
EZP733W	730573007334	Seven-Gang Wall Plates and labels	1	1	2.66 lbs (1.21 kg)

ORDERING INFORMATION - ACCESSORIES

Catalog Number	UPC Number	Description	(UOM) Qty.	Case Qty.	Weight (Each)
EZD33E	730573000052	Extension Module	1	1	1.63 lbs (0.74 kg)
EZP133PC	730573001356	One Pair (2) Positioning Clamps	1	1	0.20 lbs (0.09 kg)
RCM33	730573009338	One Pair (2) Radius Control Modules	1	1	0.05 lbs (0.02 kg)

TEST STANDARDS: ASTM E814 (UL 1479), CAN/ULC-S115

