

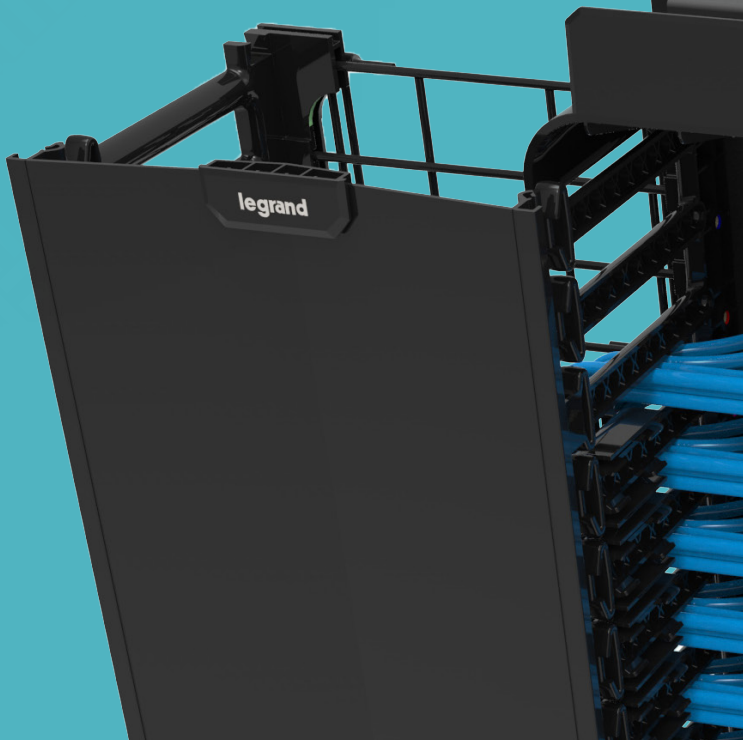
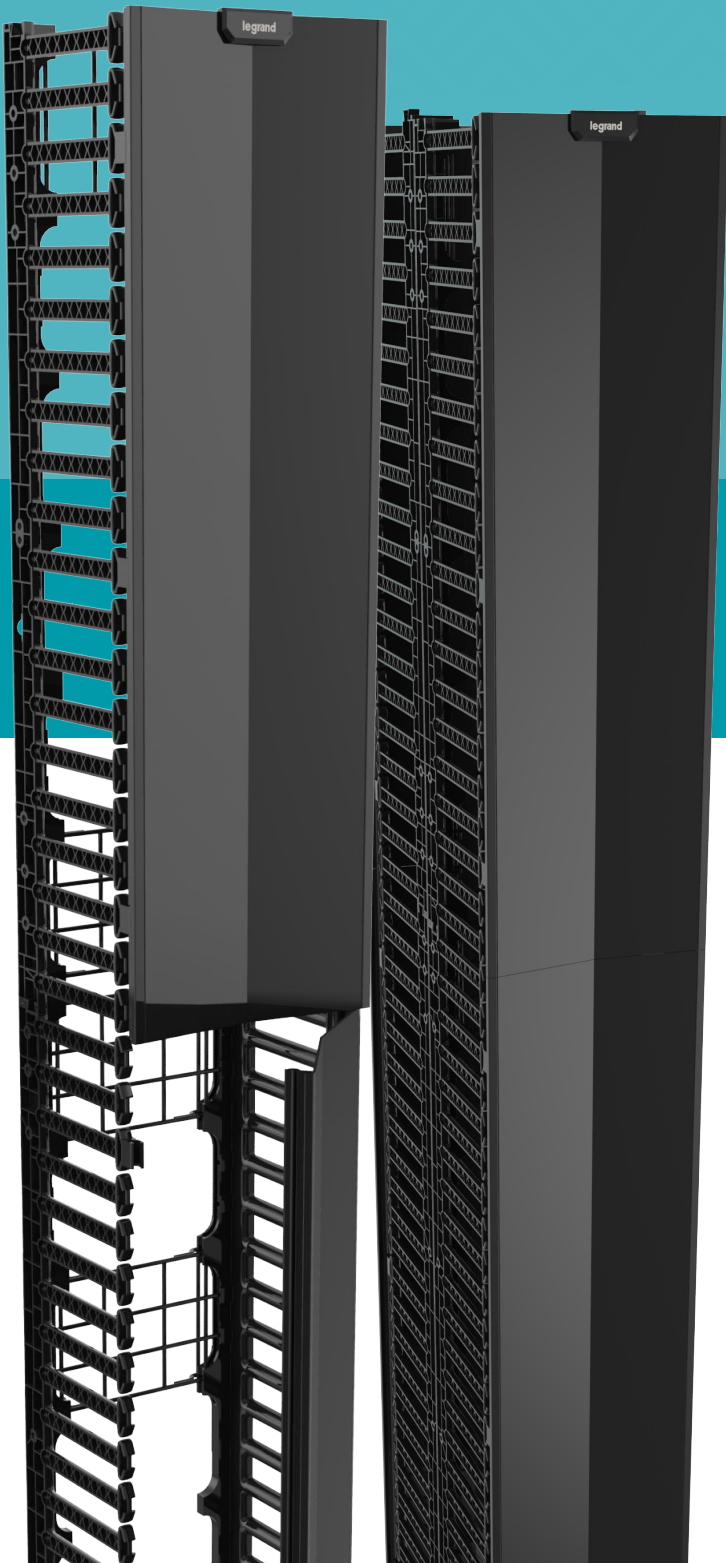
# Q-SERIES VERTICAL CABLE MANAGEMENT



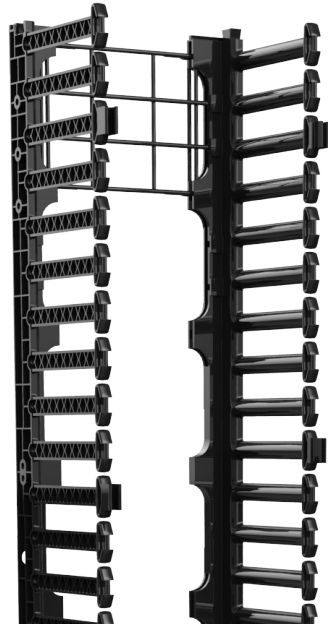
**VALUE AND  
PERFORMANCE**  
FOR BUILDING  
NETWORKS

designed to be better.™

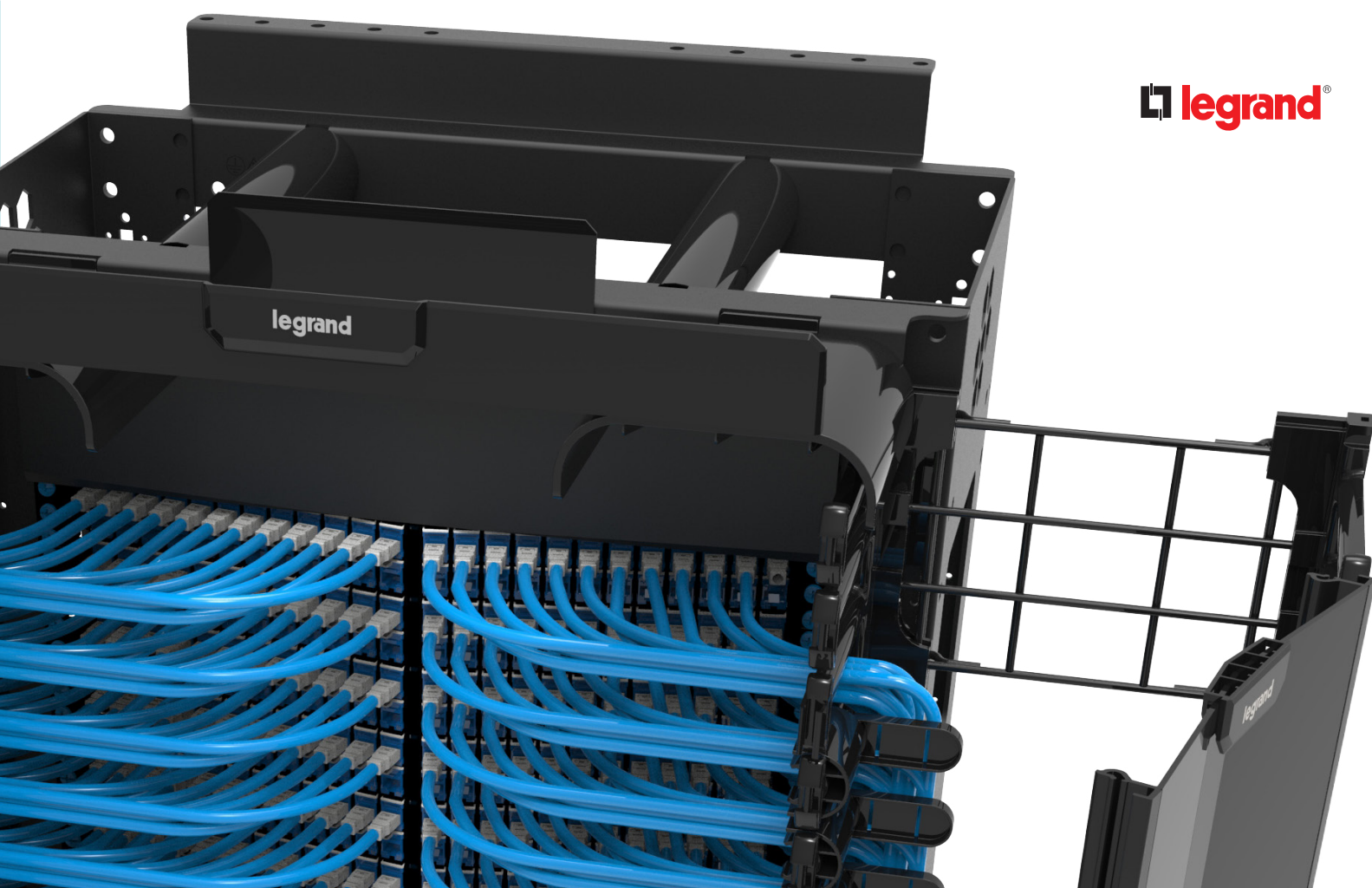




◀ **Single & Double-Sided  
Q-Series Vertical Managers**



◀ **Single-Sided Q-Series  
Vertical Managers  
Without Doors**



# DESIGNED FOR VERSATILITY BUILT FOR VALUE

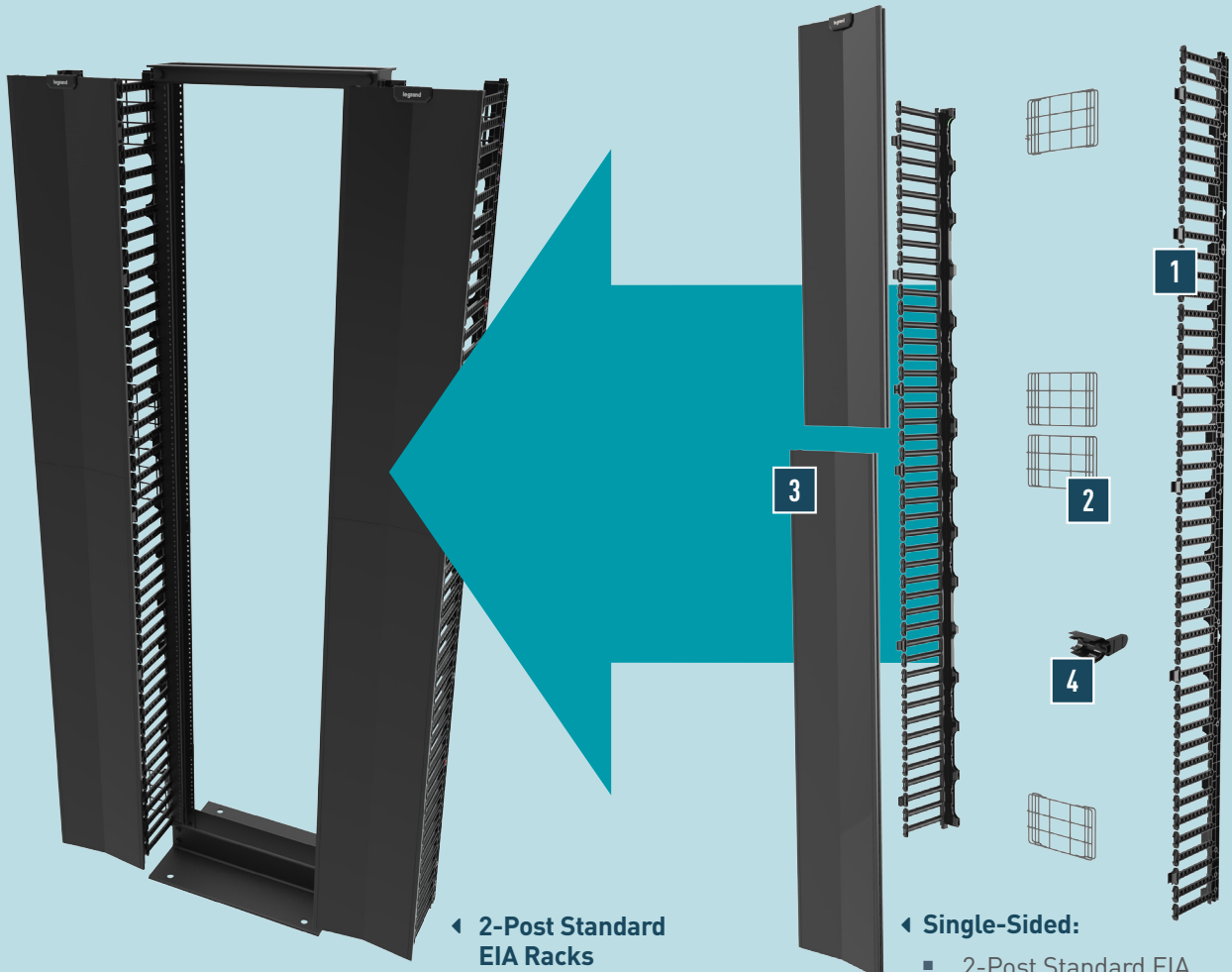
## Q-SERIES VERTICAL MANAGER

The best network infrastructure is not a sum of its parts but rather a complete solution conceived, designed, and executed to provide the very best in value and performance. Cable management and the ability for it to deliver signals from point to point in a building network are paramount in this theory of a complete solution. Born out of the many successes of the Mighty Mo® family-line, the Legrand Q-Series cable manager is a product designed for versatility, but built for value.

The Q-Series manager becomes a key element in Legrand's physical infrastructure portfolio for building networks by easily separating cables between RU increments in open frame racks, and providing many optional locations to route and secure cables. Networks are always changing and expanding, the Q-Series can accommodate adds and drops in a well organized way, that will ensure optimum performance and guarantee the integrity of the signal being delivered. The use of common assembly parts, and plastic fingers and doors, makes the Q-Series the value offering among all Legrand vertical managers.

### **BENEFITS INCLUDE:**

- Rugged wire cages, which double as cable tie locations
- Bend limiting/cable retention clips allow network installers to separate copper and fiber within the same vertical manager
- Available in 4 widths to maximize efficiency and save on valued floor space
- Easily install to any standard EIA 2 and 4-Post rack as well as the all new Mighty Mo 6 Enhanced Racks
- Completely tool-less to assemble and installs in minutes
- Designed with the environment in mind, the packaging is half the size of standard manager packaging, which minimizes waste material



◀ 2-Post Standard EIA Racks

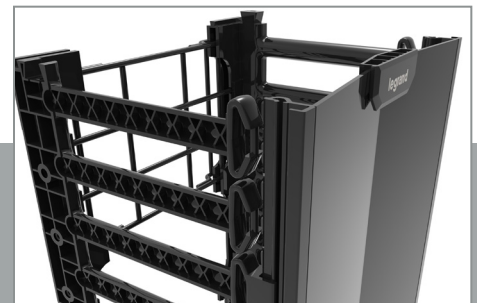
◀ Single-Sided:

- 2-Post Standard EIA
- 4-Post Standard EIA
- Mighty Mo® 6 Enhanced

# SINGLE-SIDED

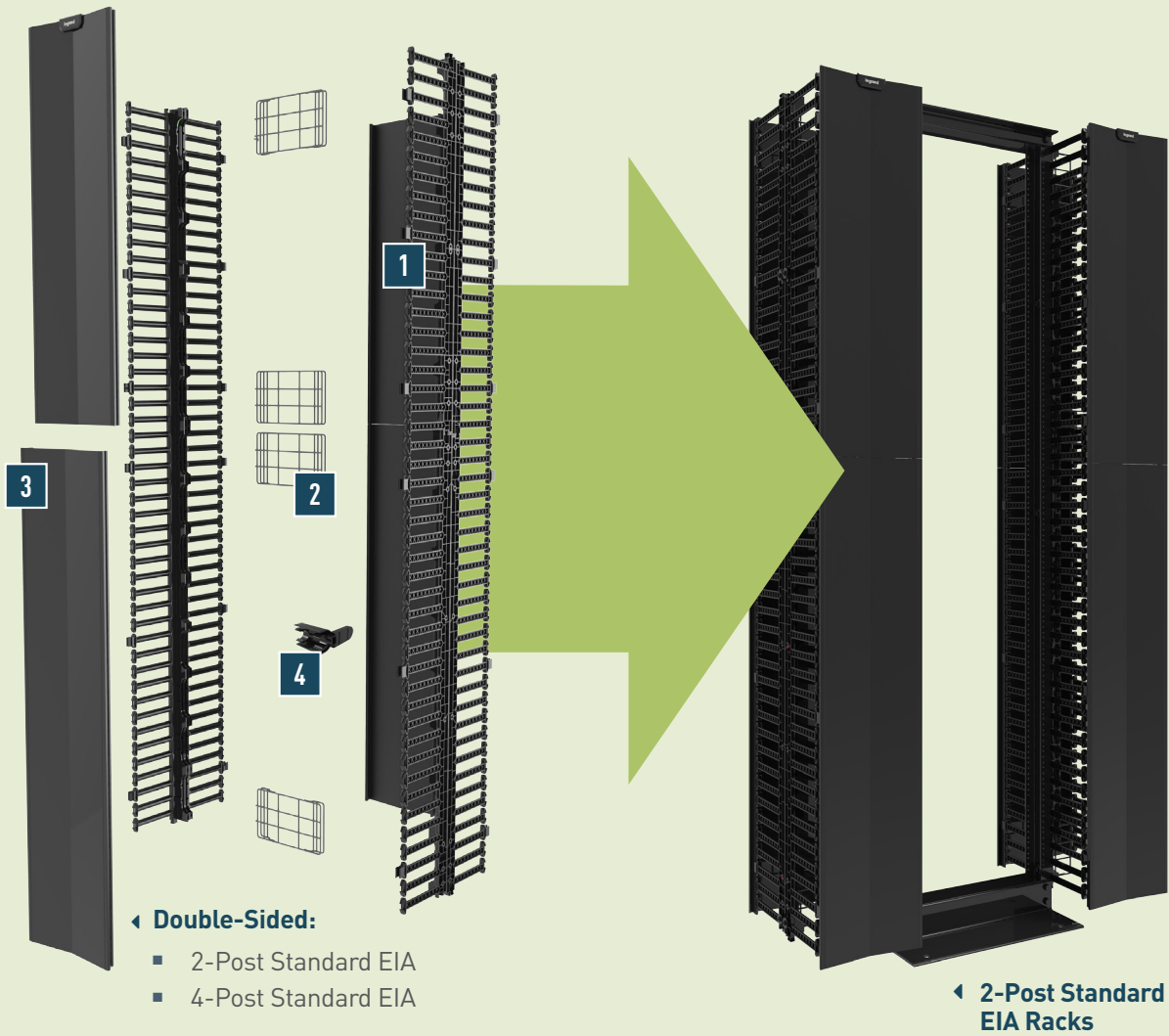
## FEATURES:

- Snap fit tool-less assembly
- Lightweight plastic
- Rugged yet flexible fingers for individual RU cable management
- Single and double-sided versions
- 4", 6" , 10" and 12" widths
- 6', 7', and 8' heights
- Cable management rear wire cage frame
- Optional rear mount cable rings
- Optional bend limiting/cable retention clips for RU fingers
- Mounts to standard EIA 2 and 4-post racks
- Mounts to Mighty Mo® 6 Enhanced Rack



**1** Arrowhead RU fingers

- Control cable bundles between RU increments
- Supports cables into vertical manager

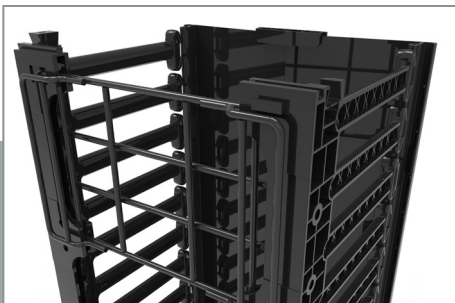


◀ **Double-Sided:**

- 2-Post Standard EIA
- 4-Post Standard EIA

◀ **2-Post Standard EIA Racks**

# DOUBLE-SIDED



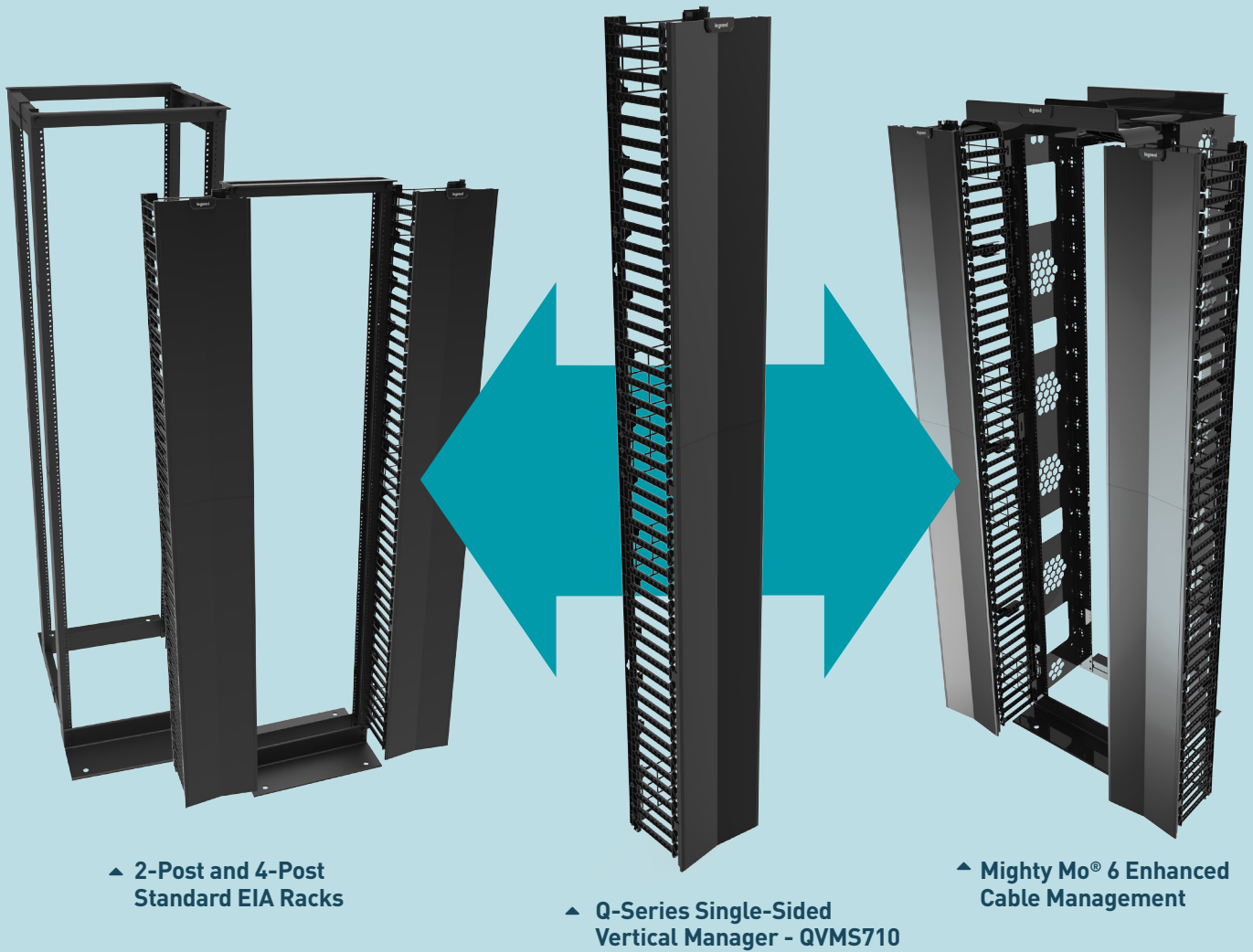
- 2 Steel wire cage back frame**
- Provides snap feature for easy assembly
  - Cable tie points front and rear.



- 3 Snap fit dual hinge doors**
- Aesthetic design
  - Hinges open on either side for easy cable dressing



- 4 Bend Limiting/Cable Retention Clip**
- Separates copper from fiber
  - Ensures proper bend radius for fiber cables
  - Integrated slots for cable tie off
  - Optional Accessory



# SINGLE-SIDED

## Q-SERIES SINGLE-SIDED VERTICAL MANAGER

The single-sided Q-Series manager is the most adaptable manager in the Legrand offering. It will mount to both the Standard EIA racks and the Mighty Mo® 6 Enhanced Rack. Perfect for building networks, it will easily install to a single open rack system, or a complete row of open racks. Cables dress cleanly to the front, and can also be dressed to the rear using the wire cages, or the optional cable ring kit. Supplied with split front doors in all sizes 4", 6", 10" and 12".



Single-Sided Vertical Manager on 2-Post Standard EIA Rack

# SINGLE-SIDED PRODUCT SKU'S:

## SINGLE-SIDED VERTICAL MANAGER

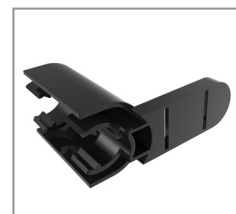
PART NO.	DESCRIPTION
QVMS604	Q-Series Vertical Manager, 6' H X 4"W, Single-Sided
QVMS606	Q-Series Vertical Manager, 6' H X 6"W, Single-Sided
QVMS610	Q-Series Vertical Manager, 6' H X 10"W, Single-Sided
QVMS612	Q-Series Vertical Manager, 6' H X 12"W, Single-Sided
QVMS704	Q-Series Vertical Manager, 7' H X 4"W, Single-Sided
QVMS706	Q-Series Vertical Manager, 7' H X 6"W, Single-Sided
QVMS710	Q-Series Vertical Manager, 7' H X 10"W, Single-Sided
QVMS712	Q-Series Vertical Manager, 7' H X 12"W, Single-Sided
QVMS804	Q-Series Vertical Manager, 8' H X 4"W, Single-Sided
QVMS806	Q-Series Vertical Manager, 8' H X 6"W, Single-Sided
QVMS810	Q-Series Vertical Manager, 8' H X 10"W, Single-Sided
QVMS812	Q-Series Vertical Manager, 8' H X 12"W, Single-Sided

## STANDARD EIA RACK ACCESSORIES

PART NO	DESCRIPTION
QVMDCRK	Bend Limiter/Cable Retainer Kit, 8 Pieces
QVMDCMR	Cable Management Rear Ring Kit, 10 Pieces, 3"
QVMDERSB	End of Row Support Bracket Kit
QVMDCK4	Wire Cage Kit, Additional 4 Cages, 4" Wide
QVMDCK6	Wire Cage Kit, Additional 4 Cages, 6" Wide
QVMDCK10	Wire Cage Kit, Additional 4 Cages, 10" Wide
QVMDCK12	Wire Cage Kit, Additional 4 Cages, 12" Wide

## MIGHTY MO® 6 ENHANCED ACCESSORIES

PART NO	DESCRIPTION
MM6EQMK7	Mighty Mo 6E Q-Series Mounting Kit, 6' and 7'
MM6EQMK8	Mighty Mo 6E Q-Series Mounting Kit, 8'
MM6EQERSB4	Mighty Mo 6E End of Row Stabilizer Bracket Kit, 4" Manager
MM6EQERSB612	Mighty Mo 6E End of Row Stabilizer Bracket Kit, 6", 10" and 12" Manager
QVMDCRK	Bend Limiter/Cable Retainer Kit, 8 Pieces
QVMDCMR	Cable Management Rear Ring Kit, 10 Pieces, 3"
QVMDCK4	Wire Cage Kit, Additional 4 Cages, 4" Wide
QVMDCK6	Wire Cage Kit, Additional 4 Cages, 6" Wide
QVMDCK10	Wire Cage Kit, Additional 4 Cages, 10" Wide
QVMDCK12	Wire Cage Kit, Additional 4 Cages, 12" Wide



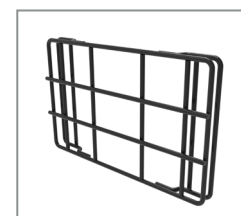
**QVMDCRK:** Bend Limiter/Cable Retainer Kit



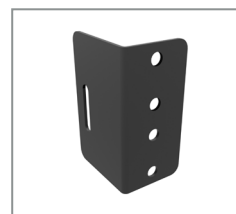
**QVMDCMR:** Cable Mgmt. Rear Ring Kit, 3"



**QVMDERSB:** End of Row Support Bracket Kit



**QVMDCK4:** Wire Cage Kit



**MM6EQMK7:** MM6E Q-Series Mounting Kit



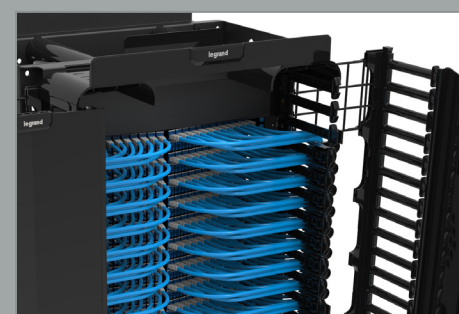
**MM6EQERSB4:** MM6E EOR Stabilizer Bracket Kit



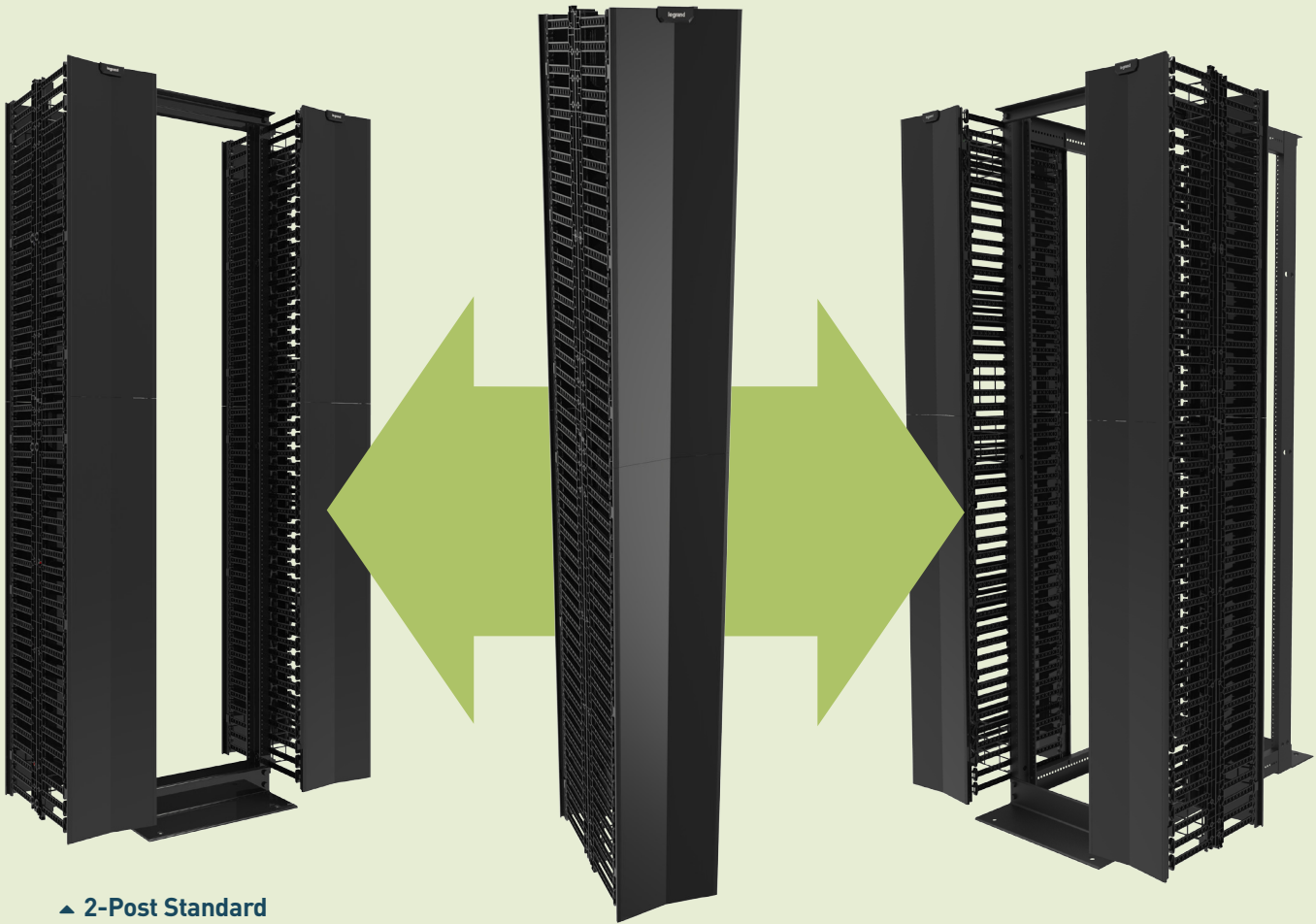
**MM6EQERSB612:** MM6E EOR Stabilizer Bracket Kit



**MM6CMS6:** Cable Mgmt. Spool, Optional Accessory



**Vertical Manager on MM6 Enhanced**



▲ 2-Post Standard EIA Racks

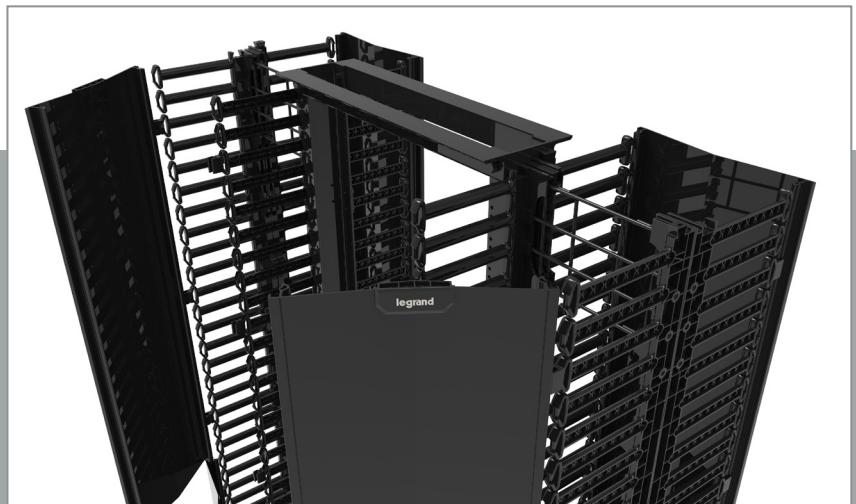
▲ Q-Series Double-Sided Vertical Manager - QVMD710

▲ 4-Post Standard EIA Racks

# DOUBLE-SIDED

## Q-SERIES DOUBLE-SIDED VERTICAL MANAGER

The double-sided Q-Series manager provides front and rear cable management for all standard EIA 2 and 4-post racks. The simple yet capable manager allows elegant routing of structured cabling throughout the entire building network. Network cabling can be dressed to the rear, and patch cords can be easily and efficiently routed to their destinations. Supplied with split front and rear doors in all sizes 4", 6", 10" and 12".



Double-Sided Vertical Manager on 2-Post Standard EIA Rack



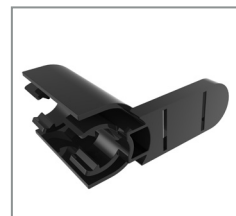
## DOUBLE-SIDED PRODUCT SKU'S:

### DOUBLE-SIDED VERTICAL MANAGER

PART NO.	DESCRIPTION
QVMD604	Q-Series Vertical Manager, 6' H X 4"W, Double-Sided
QVMD606	Q-Series Vertical Manager, 6' H X 6"W, Double-Sided
QVMD610	Q-Series Vertical Manager, 6' H X 10"W, Double-Sided
QVMD612	Q-Series Vertical Manager, 6' H X 12"W, Double-Sided
QVMD704	Q-Series Vertical Manager, 7' H X 4"W, Double-Sided
QVMD706	Q-Series Vertical Manager, 7' H X 6"W, Double-Sided
QVMD710	Q-Series Vertical Manager, 7' H X 10"W, Double-Sided
QVMD712	Q-Series Vertical Manager, 7' H X 12"W, Double-Sided
QVMD804	Q-Series Vertical Manager, 8' H X 4"W, Double-Sided
QVMD806	Q-Series Vertical Manager, 8' H X 6"W, Double-Sided
QVMD810	Q-Series Vertical Manager, 8' H X 10"W, Double-Sided
QVMD812	Q-Series Vertical Manager, 8' H X 12"W, Double-Sided

### STANDARD EIA RACK ACCESSORIES

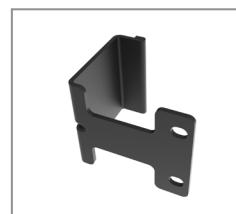
PART NO	DESCRIPTION
QVMDCRK	Bend Limiter/Cable Retainer Kit, 8 Pieces
QVMDCMR	Cable Management Rear Ring Kit, 10 Pieces, 3"
QVMDERSB	End of Row Support Bracket Kit
QVMDCK4	Wire Cage Kit, Additional 4 Cages, 4" Wide
QVMDCK6	Wire Cage Kit, Additional 4 Cages, 6" Wide
QVMDCK10	Wire Cage Kit, Additional 4 Cages, 10" Wide
QVMDCK12	Wire Cage Kit, Additional 4 Cages, 12" Wide



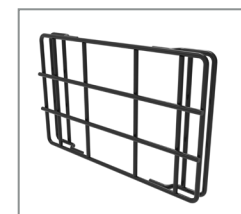
**QVMDCRK:** Bend Limiter/Cable Retainer Kit



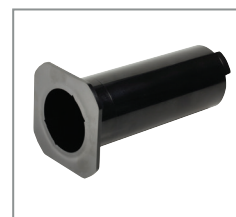
**QVMDCMR:** Cable Mgmt. Rear Ring Kit, 3"



**QVMDERSB:** End of Row Support Bracket Kit



**QVMDCK4:** Wire Cage Kit



**MM6CMS6:** Cable Mgmt. Spool, Optional Accessory



Double-Sided Vertical Manager on 4-Post Standard EIA Rack

# Q-SERIES VERTICAL MANAGER CABLE CAPACITY FILL RATES

Q-Series Vertical manager cable fill rates at 60% capacity are shown to help determine network functional needs.

## COPPER FILL RATES 60% VOLUME RULE (SPACING = CABLE DIAMETER)

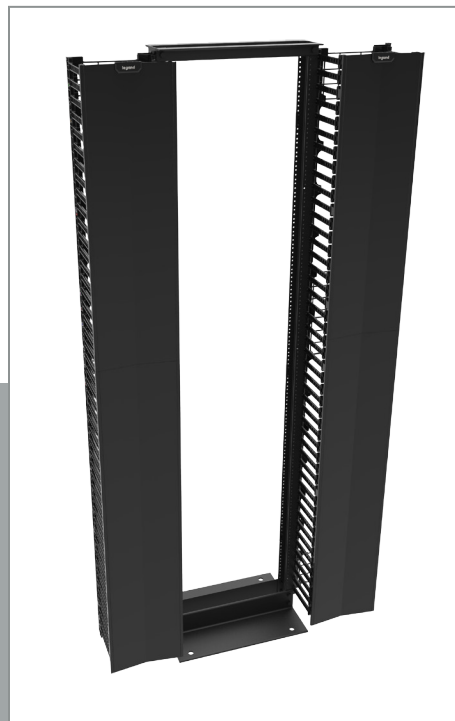
DEVICE	CAT 5E/.215 DIA	CAT 6/.230 DIA	CAT 6A/.290	CAT 6E/.22DIA
QVMS704	154	140	80	147
QVMD704	308	280	160	294
QVMS706	308	260	160	273
QVMD706	616	520	320	546
QVMS710	550	460	288	504
QVMD710	1100	920	576	1008
QVMS712	660	560	352	630
QVMD712	1320	1120	704	1260
QVMD/QVMS FINGER	28	27	22	28

## FIBER P1 FILL RATES 80% VOLUME RULE (SPACING = CABLE DIAMETER)

DEVICE	2.0 MM	2.4 MM	3.0 MM	
QVMD/QVMS FINGER	540	360	216	
QVMDCRK	349	249	151	



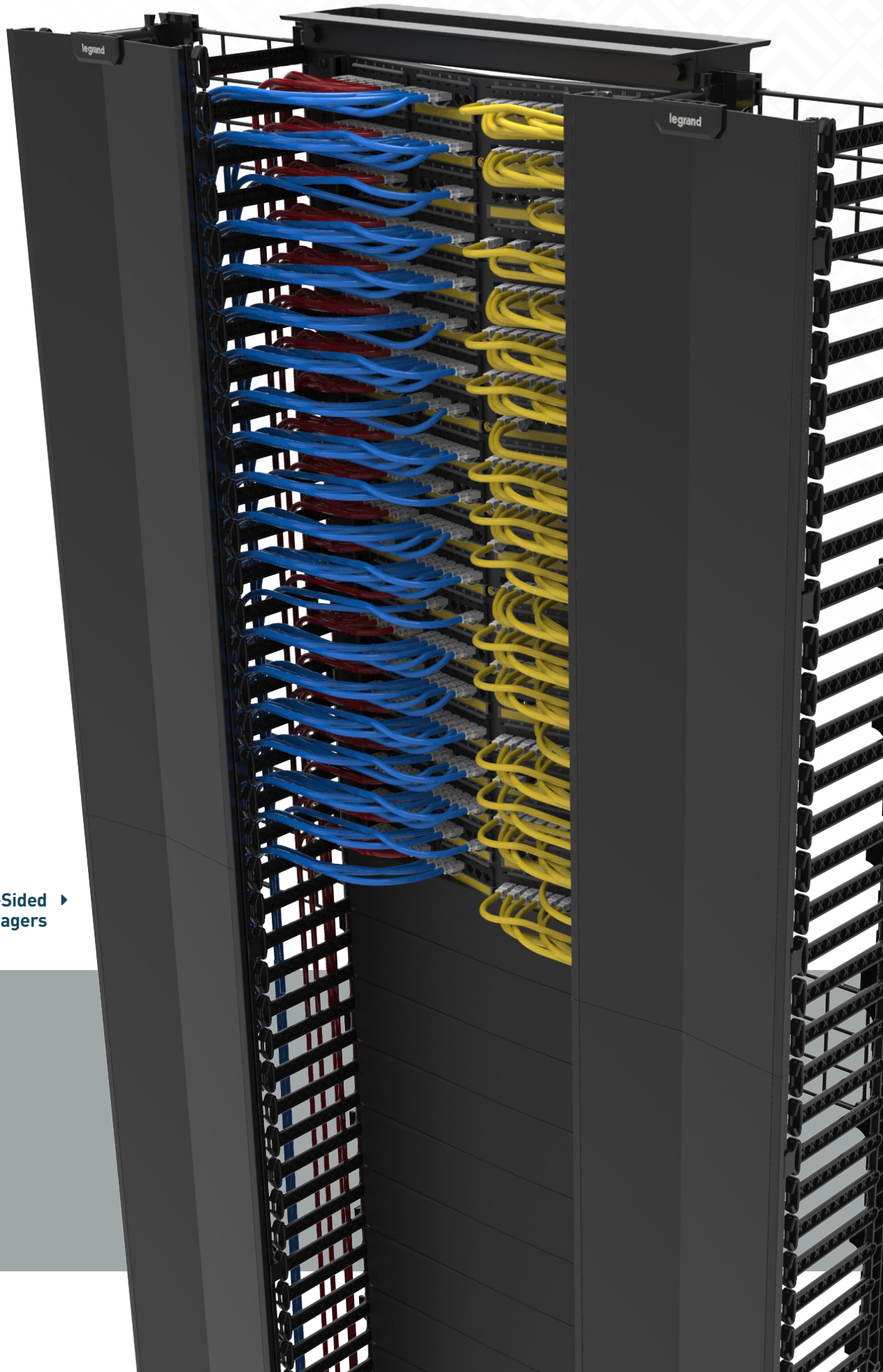
MM 6 Enhanced Cable Management



2-Post Standard EIA Racks



4-Post Standard EIA Racks



2-Post Rack, Single-Sided ▶  
Q-Series Vertical Managers



designed to be better.™



©2017 Legrand All Rights Reserved rev. 05|17 O-SERIES VERTICAL MANAGERS



**Data Communications**

**North America**  
US and Global Headquarters  
125 Eugene O'Neill Drive  
New London, CT 06320  
800.934.5432  
www.legrand.us

**Canada**  
570 Applewood Crescent  
Vaughan, Ontario L4K 4B4  
905.738.9195  
www.legrand.ca

**Rest of World**  
International Marketing & Sales  
Great King Street North  
Birmingham, B19 2LF, UK  
+44.(0)1952.677300

