

Clear Numbering

Number scheme screened on both sides

Secure Fit

LYNN uses screws or spring lock technology to secure all adapters into our panels

Large Inventory

Large inventory of parts for any configuration

- Insertion Loss (dB): 0.03 - 0.01 (SM), 0.04 - 0.02mm
- Operation Temperature: -40 - +85
- Over 500 matings
- Flammability: UL94 V-0 Grade
- RoHS compliance 2011/65/EU
- Meet GR-326-CORE
- All Single Mode - Zirconium Sleeves
- All Multimode - Phosphorus Bronze
- SC and LC Choice are one-piece adapters



2022.8.02

WITH INTERNAL SHUTTERS
Prevents contaminants,
extending the life of
your fiber backbone

PREMIUM LC

CHOICE LC

FPP-AD-L3QS-03

3 Quad
(12 Fiber)

FPP-AD-L1QS-03
FPP-AD-LUQS-03
FPP-AD-LAQS-03

FPP-AD-LUQ-03

3 Quad
(12 Fiber)

FPP-AD-L3Q-03
FPP-AD-LAQ-03
FPP-AD-L1Q-03

FPP-AD-LAQS-06

6 Quad
(24 Fiber)

FPP-AD-L3QS-06
FPP-AD-LUQS-06
FPP-AD-L1QS-06

FPP-AD-L1Q-06

6 Quad
(24 Fiber)

FPP-AD-L3Q-06
FPP-AD-LUQ-06
FPP-AD-LAQ-06

FPP-AD-LU2S-06

6 Duplex
(12 Fiber)

FPP-AD-L32S-06
FPP-AD-LA2S-06
FPP-AD-L12S-06

FPP-AD-L32-06

6 Duplex
(12 Fiber)

FPP-AD-L12-06
FPP-AD-LU2-06
FPP-AD-LA2-06

FPP-AD-L12S-08

8 Duplex
(16 Fiber)

FPP-AD-L32S-08
FPP-AD-LU2S-08
FPP-AD-LA2S-08

FPP-AD-LA2-08

8 Duplex
(16 Fiber)

FPP-AD-L32-08
FPP-AD-LU2-08
FPP-AD-L12-08

LGX Adapter Plates

Buying Guide



MTP®



FPP-AD-M32-03

3 Duplex
(6 MTP)



FPP-AD-MB2-03



FPP-AD-M31-06

6 Simplex

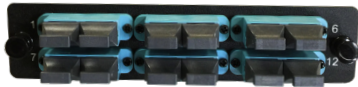


FPP-AD-MB1-06



FPP-AD-MB2-06

6 Duplex
(12 MTP)



FPP-AD-M32-06



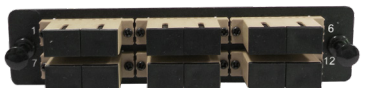
FPP-AD-MB1-08

8 Simplex



FPP-AD-M31-08

CHOICE SC



FPP-AD-S12-06

6 Duplex
(12 Fiber)



FPP-AD-S32-06

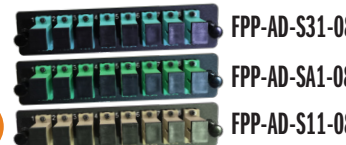
FPP-AD-SU2-06

FPP-AD-SA2-06



FPP-AD-SU1-08

8 Simplex



FPP-AD-S31-08

FPP-AD-SA1-08

FPP-AD-S11-08



FPP-AD-SA2-03

3 Duplex
(6 Fiber)



FPP-AD-S32-03

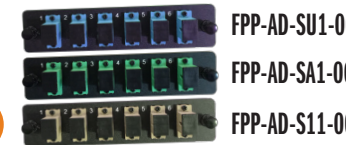
FPP-AD-SU2-03

FPP-AD-S12-03



FPP-AD-S31-06

6 Simplex



FPP-AD-SU1-06

FPP-AD-SA1-06

FPP-AD-S11-06

CHOICE ST



FPP-AD-TS1-12

12 Simplex



FPP-AD-TM1-12



FPP-AD-TM1-06

6 Simplex



FPP-AD-TS1-06

CHOICE FC



FPP-AD-FM1-06

6 Simplex



FPP-AD-FS1-06



FPP-AD-FM1-12

12 Simplex



FPP-AD-FS1-12

KEYSTONE PLATES



FPP-AD-6BK-06

BLANKS



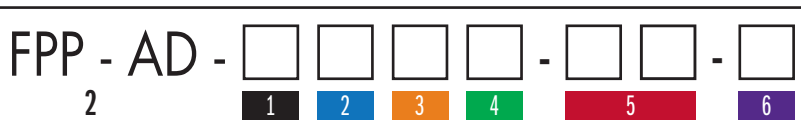
FPP-AD-BLANK

CONVERTER PLATES



*Converts any LGX Panel or Cassette to a CCH Format

ORDERING INFORMATION



*Custom configurations available

1 CONNECTOR

F = FC
L = LC
M = MTP®
S = SC
T = ST
6 = RJ45 Cat.6

2 POLISH/COLOR

1 = OM1/OM2 Beige
3 = OM3/OM4 Aqua
U = Single Mode UPC Blue
A = Single Mode APC Green
B = Black

If ST or FC Connector:
S = Single Mode
M = Multimode
K = Keystone
Pass-through

3 PACKAGE

1 - Simplex
2 - Duplex
Q = Quad

4 SHUTTERS

S = Shutters
Blank = No Shutter

5 ADAPTERS (2 Digits)

03 = 3
06 = 6
08 = 8
12 = 12

6 ADAPTER PLATE SIZE

Blank = LGX
C = Corning size equivalent
A = HDA (Panduit size equivalent**)
L = Leviton size equivalent**
I = LGX installed in Corning CCH**

*MTP is a registered trademark of USConnet Lt
**LYNN is not affiliated with Corning, Leviton or Panduit