



HYDRAULIC & RATCHETING PUNCH KITS





PUNCH KITS

PUNCH KITS

FEATURES & BENEFITS

- Great for steel, stainless steel, aluminum, plastic, and fiberglass
- Laser etched markings on cups and dies
- 3 point die design – eliminates slug from binding in cup - They just fall out of the cup
- Our Interchangeable cups and dies work with competing brands of tools
- Tools require 50% less torque than competing brands of tools
- Cushioned handle ensures a sturdy grip and provides extra comfort
- Ultra heavy-duty carrying case



RATCHETING PUNCH TOOL - RPTK

NEW



HYDRAULIC PUNCH TOOL - HPTK

Laser etched marking on articulating head provides alignment for easy storage of tool in carrying case

Tool features fully articulating head- 360° capability



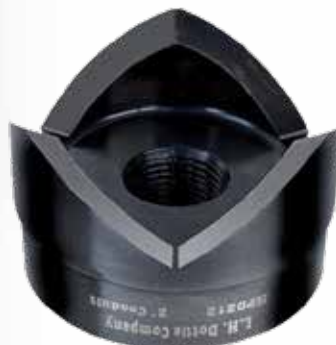
Cushioned handles ensure a sturdy grip & provide extra comfort

| RPTK CAPACITY - PLAIN STEEL | | | | | | RPTK CAPACITY - 304 STAINLESS STEEL | | | | | | HPTK CAPACITY - PLAIN STEEL | | | | | | HPTK CAPACITY - 304 STAINLESS STEEL | | | | | | | | | | |
|-----------------------------|----|----|----|----|----|-------------------------------------|--------|----|----|----|----|-----------------------------|----|--------|----|----|----|-------------------------------------|----|----|--|--------|----|----|----|----|----|--|
| | 20 | 18 | 16 | 14 | 12 | 10 | | 20 | 18 | 16 | 14 | 12 | 10 | | 20 | 18 | 16 | 14 | 12 | 10 | | 20 | 18 | 16 | 14 | 12 | 10 | |
| 7/8" | | | | | | | 7/8" | | | | | | | 7/8" | | | | | | | | 7/8" | | | | | | |
| 1-1/8" | | | | | | | 1-1/8" | | | | | | | 1-1/8" | | | | | | | | 1-1/8" | | | | | | |
| 1-3/8" | | | | | | | 1-3/8" | | | | | | | 1-3/8" | | | | | | | | 1-3/8" | | | | | | |
| 1-3/4" | | | | | | | 1-3/4" | | | | | | | 1-3/4" | | | | | | | | 1-3/4" | | | | | | |
| 2" | | | | | | | 2" | | | | | | | 2" | | | | | | | | 2" | | | | | | |
| 2-1/2" | | | | | | | 2-1/2" | | | | | | | 2-1/2" | | | | | | | | 2-1/2" | | | | | | |
| 3" | | | | | | | 3" | | | | | | | 3" | | | | | | | | 3" | | | | | | |
| 3-1/2" | | | | | | | 3-1/2" | | | | | | | 3-1/2" | | | | | | | | 3-1/2" | | | | | | |
| 4" | | | | | | | 4" | | | | | | | 4" | | | | | | | | 4" | | | | | | |
| 4-1/2" | | | | | | | 4-1/2" | | | | | | | 4-1/2" | | | | | | | | 4-1/2" | | | | | | |

CUPS AND DIES

L.H. Dottie's unique cup and die sets feature a three cutting point design which allows slugs to be removed with ease and prevents them from binding in the cup

Cups and dies are Laser etched with part numbers and conduit sizes



TIP-BITS™

Tip-Bits are the only step drill bits available with a replaceable tip

Constructed of M2 high Speed Steel coated with Titanium and Cobalt

Triple cutting flute design tip cuts smoother, faster, and cooler



CUPS AND DIES

PC 6410

Our unique cup and die sets feature a three cutting point design. With this feature no slug will ever hang up in the cup and splitting it is not required, the slug will simply fall out of the cup. Each cup and die is laser etched with part number and conduit size. Each cup also has laser etched centering lines for easy layout on panels and boxes.

CUPS

| CAT. NO. | UPC | DESCRIPTION | STD | MSTR | WT/STD |
|----------|-------|-----------------------------|-----|------|--------|
| HPC78 | 82010 | 7/8" Cup (1/2" Conduit) | 1 | | 0.25# |
| HPC118 | 82013 | 1 1/8" Cup (3/4" Conduit) | 1 | | 0.35# |
| HPC134 | 82019 | 1 3/4" Cup (1 1/4" Conduit) | 1 | | 0.45# |
| HPC138 | 82016 | 1 3/8" Cup (1" Conduit) | 1 | | 0.65# |
| HPC1732 | 82178 | 1-7/32" Cup (Hole Lock) | 1 | | 0.40# |
| HPC200 | 82022 | 2" Cup (1 1/2" Conduit) | 1 | | 0.80# |
| HPC212 | 82025 | 2 1/2" Cup (2" Conduit) | 1 | | 1.30# |
| HPC300 | 82028 | 3" Cup (2 1/2" Conduit) | 1 | | 1.55# |
| HPC312 | 82031 | 3 1/2" Cup (3" Conduit) | 1 | | 2.10# |
| HPC400 | 82034 | 4" Cup (3 1/2" Conduit) | 1 | | 2.65# |
| HPC412 | 82037 | 4 1/2" Cup (4" Conduit) | 1 | | 3.45# |

DIES

| | | | | | |
|---------|-------|-----------------------------|---|--|-------|
| HPD78 | 82009 | 7/8" Die (1/2" Conduit) | 1 | | 0.10# |
| HPD118 | 82012 | 1 1/8" Die (3/4" Conduit) | 1 | | 0.10# |
| HPD134 | 82018 | 1 3/4" Die (1 1/4" Conduit) | 1 | | 0.40# |
| HPD138 | 82015 | 1 3/8" Die (1" Conduit) | 1 | | 0.25# |
| HPD1732 | 82179 | 1-7/32" Die (Hole Lock) | 1 | | 0.20# |
| HPD200 | 82021 | 2" Die (1 1/2" Conduit) | 1 | | 0.65# |
| HPD212 | 82024 | 2 1/2" Die (2" Conduit) | 1 | | 1.20# |
| HPD300 | 82027 | 3" Die (2 1/2" Conduit) | 1 | | 1.60# |
| HPD312 | 82030 | 3 1/2" Die (3" Conduit) | 1 | | 2.35# |
| HPD400 | 82033 | 4" Die (3 1/2" Conduit) | 1 | | 2.85# |
| HPD412 | 82036 | 4 1/2" Die (4" Conduit) | 1 | | 3.30# |

CUP & DIE SETS

| | | | | | |
|---------|-------|-----------------------------|---|--|-------|
| HPS78 | 82008 | 7/8" Set (1/2" Conduit) | 1 | | 0.10# |
| HPS118 | 82011 | 1 1/8" Set (3/4" Conduit) | 1 | | 0.10# |
| HPS134 | 82017 | 1 3/4" Set (1 1/4" Conduit) | 1 | | 0.40# |
| HPS138 | 82015 | 1 3/8" Set (1" Conduit) | 1 | | 0.25# |
| HPS1732 | 82177 | 1-7/32" Set (Hole Lock) | 1 | | 0.20# |
| HPS200 | 82020 | 2" Set (1 1/2" Conduit) | 1 | | 0.65# |
| HPS212 | 82023 | 2 1/2" Set (2" Conduit) | 1 | | 1.20# |
| HPS300 | 82026 | 3" Set (2 1/2" Conduit) | 1 | | 1.60# |
| HPS312 | 82029 | 3 1/2" Set (3" Conduit) | 1 | | 2.35# |
| HPS400 | 82033 | 4" Set (3 1/2" Conduit) | 1 | | 2.85# |
| HPS412 | 82035 | 4 1/2" Set (4" Conduit) | 1 | | 3.30# |
| HPS512 | 82170 | 5-1/2" Set (5" Conduit) | 1 | | 3.30# |
| HPS612 | 82171 | 6 1/2" Set (6" Conduit) | 1 | | 3.30# |



Features:

- The Finest High Speed Steel (HSS) is Used in Dottie Cups & Dies
- Unique 3 Point Design and Careful Machining Produces Long Lasting Cup & Die Sets
- Laser Etched Identification & Location Alignment Markings Make Dottie Cups and Dies Easy to Use on Any Job
- Interchangeable Cups & Dies

TOOLS & SPECIALTY ITEMS

ACCESSORIES

PC 6410

HYDRAULIC ACCESSORIES

| CAT. NO. | UPC | DESCRIPTION | STD | MSTR | WT/STD |
|----------|-------|-------------------------------------|-----|------|--------|
| HPSDS38 | 82038 | Small Draw Stud (3/8") | 1 | | 0.25# |
| HPLDS75 | 82039 | Large Draw Stud (3/4") | 1 | | 0.35# |
| HPLDS100 | 82049 | Large Draw Stud (1") | 1 | | 0.45# |
| HPS | 82069 | Hydraulic Punch Spacer | 1 | | 0.65# |
| HPTMKIT | 82180 | HPT Maintenance Repair Kit - 12 Ton | 1 | | 0.40# |

RATCHETING ACCESSORIES

| | | | | | |
|---------|-------|-----------------------------|---|--|-------|
| RPBBD38 | 85584 | 3/8" Ball Bearing Draw Stud | 1 | | 0.50# |
| RPBBD34 | 85585 | 3/4" Ball Bearing Draw Stud | 1 | | 0.95# |





HYDRAULIC AND RATCHETING PUNCH KITS

PC 6410

Dottie's state of the art Punch Kits are compact yet extremely powerful. We offer both Hydraulic and Ratcheting Punch Tools. The Hydraulic Punch has a 360 degree fully articulating 12-Ton rated Aluminum Head. The 12-Ton articulating head allows users to punch holes in any position. The recently launched Ratcheting Punch Tool is the only model available with the capability to punch up to 16 gauge stainless steel. Both the Hydraulic and Ratcheting Punch kits come with interchangeable cups and dies that feature our innovative 3 point design which ensures a clean cut every time. Each kit is packed in an ultra heavy-duty carrying case with industrial strength latches.



RPTK - 10 PIECE KIT FOR 1/2" TO 2" CONDUIT

Kit Includes:

- 1pc. 1" Hex Ratcheting Wrench
- 6pc. Die Sets: Sizes - 7/8", 1-1/8", 1-3/8", 1-3/4", 2", 2-1/2"
- 2pc. Draw Studs/Collar: Sizes - 3/8", 3/4"
- 1pc. Tip-Bits™ Steps Drills: Size - 1-1/8"
- Ultra Heavy-Duty Carrying Case

| CAT. NO. | UPC | DESCRIPTION | STD | MSTR | WT/STD |
|----------|-------|-------------------------------|-----|------|--------|
| RPTK | 85583 | 1/2" to 2" Conduit (10pc kit) | 1 | | 9.80# |



HPTK1 - 13 PIECE KIT FOR 1/2" TO 2 1/2" CONDUIT

Kit Includes:

- 1pc. 12 Ton Hydraulic Punch with Fully Articulating Head
- 7pc. Die Sets: Sizes - 7/8", 1-1/8", 1-3/8", 1-3/4", 2", 2-1/2", 3"
- 2pc. Draw Studs/Collar: Sizes - 3/8", 3/4"
- 2pc. Tip-Bits™ Steps Drills: Size - 1-1/8", 7/8"
- 1pc. 1/2" Die Spacer
- Ultra Heavy-Duty Carrying Case

| CAT. NO. | UPC | DESCRIPTION | STD | MSTR | WT/STD |
|----------|-------|-----------------------------------|-----|------|--------|
| HPTK1 | 82044 | 1/2" to 2 1/2" Conduit (13pc kit) | 1 | | 21.65# |



HPTK2 - 16 PIECE KIT FOR 1/2" TO 4" CONDUIT

Kit Includes:

- 1pc. 12 Ton Hydraulic Punch with Fully Articulating Head
- 10pc. Die Sets: Sizes - 7/8", 1-1/8", 1-3/8", 1-3/4", 2", 2-1/2", 3", 3-1/2", 4", 4-1/2"
- 2pc. Draw Studs/Collar: Sizes - 3/8", 3/4"
- 2pc. Tip-Bits™ Steps Drills: Size - 1-1/8", 7/8"
- 1pc. 1/2" Die Spacer
- Ultra Heavy-Duty Carrying Case

| CAT. NO. | UPC | DESCRIPTION | STD | MSTR | WT/STD |
|----------|-------|-------------------------------|-----|------|--------|
| HPTK2 | 82045 | 1/2" to 4" Conduit (16pc kit) | 1 | | 40.00# |



HPTK3 - 3 PIECE DIE KIT FOR 3", 3-1/2" & 4" CONDUIT

Kit Includes:

- 3pc. Die Sets: Sizes - 3-1/2", 4", and 4-1/2"
- Ultra Heavy-Duty Carrying Case

| CAT. NO. | UPC | DESCRIPTION | STD | MSTR | WT/STD |
|----------|-------|----------------------------|-----|------|--------|
| HPTK3 | 82043 | 3" to 4" Conduit (3pc Kit) | 1 | | 18.85# |

#LPUNCH
©2018 L.H. Dottie Co.



TOOLS & SPECIALTY ITEMS