

Siren-Strobe

Before You Begin

Install the **PSIREN** in either of two ways:

- AC operation with internal DC battery backup (indoor use only)
- DC operation with batteries only ("mount anywhere")

The unit is shipped from the factory with the 120VAC wall outlet prongs installed (see "**AC With Battery Backup**" instructions, below). The PSIREN can also be powered with batteries only, thus increasing the number of possible installation locations (skip to the section "**Batteries Only**"). Use the template (WI2728LF) appropriate for the installation. We recommend the unit be oriented as shown in the accompanying image; however, the unit can be installed upside down if needed. **Note:** Up to three (3) PSIREN wireless sirens are allowed for each Super Panel.

The siren will "learn" AC presence upon first power up; this means that an AC Power Failure trouble will only be reported if the siren is powered by AC and then AC power is lost or if the siren is removed from the wall power socket. In addition, if the siren is powered by AC and the batteries are low (or not installed), a low battery trouble will be reported.

Four 'C'-size batteries (not included) **must always be installed for ALL installations** (we recommend using 4 fresh Duracell alkaline batteries; do not mix battery types, or old and new batteries).

An internal tamper circuit is provided when the external (provided) Tamper Magnet is installed. The tamper feature alerts the Super Panel in the event of unauthorized removal or access to the PSIREN. For wall outlet installations, install this Tamper Magnet with the provided double-sided tape and do NOT use the screws (DO NOT use screws near electrical wiring that runs inside walls). **Important:** We recommend the



PSIREN
Wireless Siren

use of ear protection should the siren activate inadvertently during the installation or while testing. The siren will "learn" the presence of the Tamper Magnet the first time its magnetic presence is detected; subsequent removal of the Tamper Magnet will trigger a tamper trouble.

Note: The Tamper magnet is secured to the wall; it is not installed on the siren. **Note:** PC board header **JP2** is factory shipped with a shunt placed in the "**Store**" position (see page 17-3 for test procedures). **Do not apply AC power when rear cover is open!** **Note:** The Super Panel's integral siren only activates upon an Area 1 alarm. All other external sirens activate upon an alarm in any Area.

AC With Battery Backup

For AC installations, be sure to select an un-switched 120VAC wall outlet and ALWAYS install the **required** four 'C'-size batteries (not included) that provide power if AC power fails.

1. Place a template (see following pages in this section) over the 120VAC wall outlet socket, carefully aligning the template with the "**Center Line of Wall Socket**". Use a level to ensure horizontal mounting.
2. Mark the location of the **Tamper Magnet**.
3. Use the supplied double-backed tape to secure the **Tamper Magnet** to the wall (do NOT use any screws near electrical wiring that runs inside walls).
4. At the wall outlet, remove the wall cover plate screw (only the screw; keep the cover plate in place). For wall outlets without a

**Every time the siren is powered from an unpowered state, the unit ignores the tamper function until after the siren is placed over the Tamper Magnet. Subsequently, when the normally-closed tamper circuit opens (magnet removed), the siren reports a tamper trouble to the Super Panel.*

Siren-Strobe (cont'd)

center cover plate screw, use the provided bracket and template (see following pages for templates).

- Plug the unit into the wall outlet, being certain the siren housing is placed over the **Tamper Magnet**. The unit powers up*.
- Secure siren to wall outlet by using the single supplied screw provided in the accessory bag (part #SC206LF) and washer to replace the wall cover plate screw removed previously. Insert screw and washer into the **Screw Hole Tab** shown on the template (or the other template used for outlets without a center cover plate screw).
- Install the **Finisher Plate** to conceal the **Tamper Magnet** (see Fig. 2).

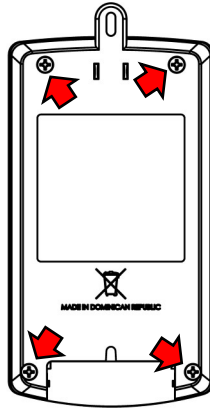


Fig. 1: Rear of the unit

Batteries Only

- Place the template over the mounting surface. Use a level to be sure the template is parallel with the floor. **WARNING:** Select a location that will ensure that screws are NOT used near electrical wiring that runs inside walls.
- Mark the 2 holes for the **Tamper Magnet**.
- Mark the 1 hole for the **Slide Screw**.



Fig. 2: Finisher Plate

- Heeding the **WARNING** noted in step 1, above, secure the **Tamper Magnet** to the wall using the two screws provided (part #SC596, #6 x 3/4" self-tapping, Phillips flat head, U-cut, steel zinc, Type A).
- Screw in the provided **Slide Screw** fully into the wall, then back the screw out 1 turn (part #SC265, #6 x 1/2" self-tapping, Phillips pan head, steel zinc, Type A).
- On the back of the unit, remove the four (4) screws that secure the rear housing and pull off the rear housing (see Fig. 1).
- Remove the two screws that secure the **Wall Outlet PCB** (see Fig. 3). Unplug the **Wall Outlet PCB** and place into the supplied anti-static bag/sheet for possible future use.
- On the inside rear housing, insert the **Rubber Gasket** that covers the slots for the **Wall Outlet PCB** prongs (see Fig. 4).
- In place of the removed **Wall Outlet PCB**, install the **Tuning PCB** (needed for antenna tuning to compensate for the removal of the **Wall Outlet PCB**) and secure with the original **Wall Outlet PCB** screws. *Failure to install this tuning board for DC only operation is not advised and may result in poor wireless performance.*

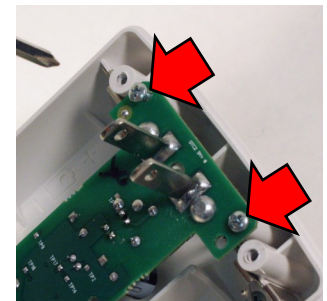


Fig. 3: Remove the two "Wall Outlet PCB" screws

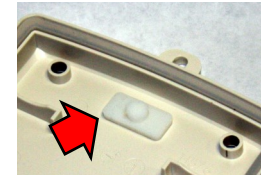


Fig. 4: Rubber Gasket

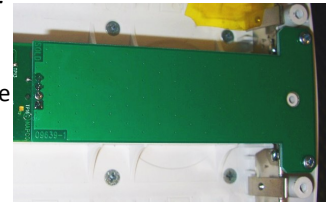


Fig. 5: Tuning PCB

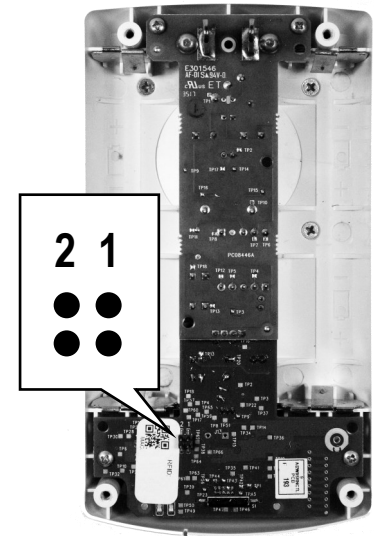
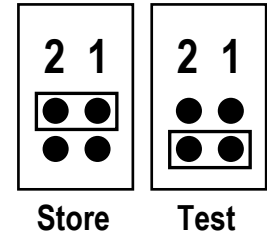
Siren-Strobe (cont'd)

10. Install batteries (observing polarity) and the unit powers up (see *footnote on page 17-1).
11. Replace the perimeter gasket seal and the rear housing and secure with the four (4) screws. Important: Silicone sealant has been added to these 4 screw holes; if installed in a damp location, ensure the silicone sealant remains present and effective. If necessary, add silicone sealant to restore water resistance.
12. Secure unit to the wall by using a screw (appropriate for the mounting surface) inserted into the **Screw Hole Tab** shown on the templates.
13. Install the **Finisher Plate** to conceal the **Tamper Magnet** (see Fig. 2).

Super Panel and PSIREN: Pairing and Testing Steps

Important: We recommend the use of ear protection should the siren activate inadvertently during the installation or while testing.

1. In the Super Panel **Home** screen, tap the 'triple bar' menu icon located at the top left.
2. Type the Master Passcode.
3. In the **Settings** screen, tap **Devices**, then tap the [+] sign at the top right corner.
4. In the **Add Devices** screen, tap **Siren**.
5. **Before performing the next steps, we strongly recommend the use of ear protection (siren is rated at 85dBA).** On the Super Panel display, a popup reads, "Please trigger the siren now": Separate the PSIREN body from the magnet, then replace the magnet.
6. Ensure the indication "**Triggered**" appears on screen.
7. Select the physical installation location of the siren from the selections (the screen that appears next allows you time to physically install the siren).
8. When finished installing the siren in the installation location, tap **Done**.
9. Verify a confirmation screen appears, e.g., "Front Entry Siren has been added" and displays the siren in the Group to which it was added.
10. **Required:** You must perform a test of the siren to ensure a secure communication link between the Super Panel and the siren. **Before performing the next steps, we strongly recommend the use of ear protection.**
 - a. In the **Settings** screen, tap **Test**.



Location of PSIREN Jumper Pins for:
• Strobe / Sounder Test

(continued)

Siren-Strobe (cont'd)

- b. In the **System Test** screen, tap **Siren** and all paired sirens are displayed.
- c. Tap **Start** and verify all paired sirens sound and flash their strobes; in the popup that appears ("Does it sound loudly?"), tap **Yes**. **Note:** Each paired siren requires each be individually muted.
- d. Ensure the siren RF signal strength is "Excellent" or "Good". A "Fair" signal strength is not recommended.

Test Jumper: PSIREN Strobe/Sounder Test

Before physically installing the PSIREN, the siren can be optionally tested on battery power. However, we recommend using the Super Panel Test function after physically installing the siren in its final installation location.

Reference the PSIREN jumper positions shown on previous page. Orient the unit with the wall outlet AC prongs at the top (as shown in the image). **Note: Use hearing protection. Do not apply AC power when rear cover is open!**

1. Remove AC and batteries*.
2. Remove jumper from pins (if necessary) and place jumper in "**Test**" position.
3. Install batteries, observing polarity. *Upon the insertion of the 4th battery, the siren will sound and the strobe will flash CONTINUOUSLY until shunt is returned to "**Store**" and batteries are removed (in steps that follow).*
4. Remove jumper and place in "**Store**" position.
5. Remove batteries to silence; replace batteries and restore AC (if necessary). **Do not apply AC power when rear cover is open!**

PSIREN Signaling Information

The PSIREN can generate three types of signals: **Fire**, **CO** (carbon monoxide) and **Burglary**, described as follows:

Fire Alarm:

A Fire alarm sounds **T3**, i.e., Temporal-Three audio alarm sounds consisting of 3 short beeps followed by a short pause before the repetition of the next series of beeps.

CO Alarm:

A carbon monoxide alarm sounds **T4**, i.e., Temporal-Four audio alarm sounds consisting of 4 short beeps followed by a pause of about 5 seconds before the next series of beeps.

Burglary Alarm:

A burglary alarm sounds a continued alarm without breaks.

Simultaneous Fire and CO Alarms

In case of any combination of simultaneous Fire, CO and Burglary alarms, the siren will produce only one audible signal according to the signaling priority:

1. Fire (highest)
2. CO
3. Burglary (lowest)

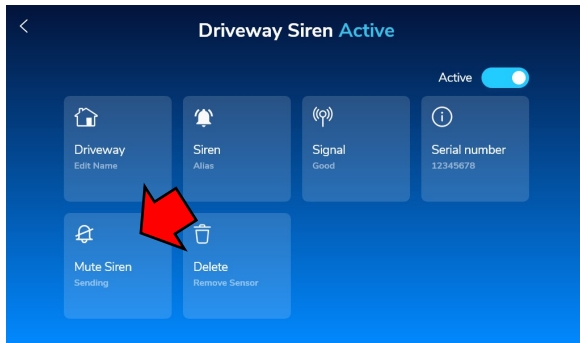
Should a simultaneous Fire, CO and Burglary alarms be triggered, only Fire (**T3**) will sound. After the **T3** fire alarm cadence is manually silenced at the Super Panel, the siren will continue sounding a **T4** CO cadence until the **T4** CO cadence is silenced by the user with their User passcode. The continuous Burglary alarm will then sound until manually silenced.

Siren-Strobe (cont'd)

Mute Siren

If a siren is sounding and you wish to turn it off, enter your User passcode. If your attempt to turn off the siren with your User passcode does not succeed, an additional **Mute Siren** feature is available:

1. With the siren sounding, open the Super Panel **Home** screen and select the 'triple bar' menu icon located at the top left.
2. Enter the Master Passcode.
3. In the **Settings** screen, tap **Devices**.
4. In the **Groups** section, select **Siren Group** and select the active siren that you wish to mute. The screen below, for example, displays the several buttons that appear, including the **Mute Siren** button:



5. Select **Mute Siren** to send a mute command from the Super Panel to the selected siren. A "**Mute Siren Sending**" popup appears. If the siren has been muted, select **OK**. Note that if you do not select **OK**, the Super Panel will continue sending a mute command to the siren for 1 minute.

Siren-Strobe (cont'd)

Specifications -- Siren-Strobe (Model PSIREN)

Input Power	120VAC and four (4) 'C'-size batteries <u>must always be installed for ALL installation types</u> . We recommend using Duracell alkaline; never use less than 4 fresh batteries and do not mix battery types; do not mix old and new batteries.
Input Current (120VAC)	1.60mA standby current; 3.26mA when siren active
Operating Temperature	32° to 120.2°F (0° to 49°C)
Relative Humidity (Storage)	85% Max. non-condensing
Weather Proofing	Indoor use only when powered by AC. Outdoor use allowed only when powered by solely by batteries and AC power is not used.
Dimensions (W x H x D)	3.5 x 6.75 x 2.5 in. (8.9 x 17.1 x 6.4cm)