

Steel Fan & Fixture Box with Adjustable Mounting Bracket for Existing Construction



Heavy-duty, plated steel fan/fixture box with fully adjustable mounting bracket for retrofit installations. Adjusts from 16" to 24" o.c. spacing.

FEATURES AND BENEFITS

- No parts to lose—installation and adjustment screws ship parked in place
- Installs quickly and securely between joists or rafters 16" to 24" o.c.
- Fan/fixture installation screws are parked...ready for easy fan/fixture bracket installation!
- UL rated: 70 lb fan/90 lb fixture at 24" o.c. and 70 lb fan/150 lb fixture at 16" o.c.;
- CSA rated: 50 lb fan/fixture

FBR4200R INCLUDES...

Box/bracket, screws to adjust box position, installed NM cable connector, multiple KO's, and two screws for fan/fixture bracket installation (screwed in place until removed by installer).

Scan For Video

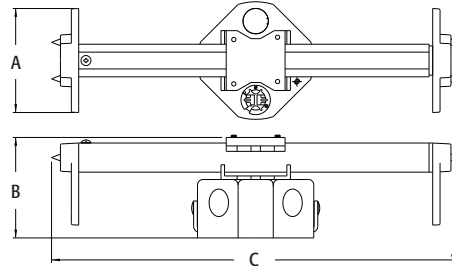


CATALOG NUMBER	UPC/DCI/NAED MFG #018997	DESCRIPTION / CU. IN.	UNIT PKG	STD PKG	DIM A	DIM B	DIM C
FBR4200R	75315	2" Box depth 20.0 cu. in.	1	10	3.563	3.438	13.979

Note: Install fan or fixture (not included) in accordance with manufacturer's instructions and all local applicable electrical codes, using the parked screws provided. Refer to chart on page R-25 for load ratings and number of single conductors.



PATENTED.

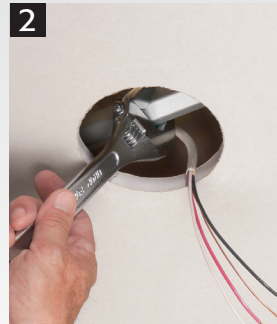


For Joist or Rafters 16" to 24" on center

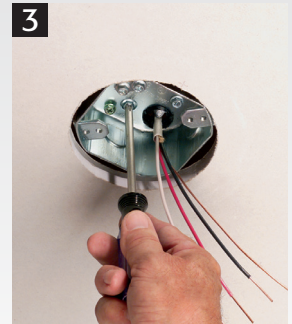
INSTALLATION INSTRUCTIONS



1 Cut a 4-1/16" diameter hole in ceiling. Remove box from sled and fit mounting bracket into hole. Position bracket between joists, with bracket resting on the ceiling.



2 Tighten the hex bar with a wrench to secure bracket between joists. As the hex bar is tightened, bracket ends bite into the joists, holding the unit secure.



3 Pull cable through installed NM cable connector. Reattach box, and center it in hole. Attach fan/fixture bracket with supplied screws.