

ONE-BOX™ Vapor Boxes for Fixtures

Versatile, non-conductive fixture box for new construction. Mounts directly to a wood or steel stud.

FEATURES AND BENEFITS

- Non-metallic, non-conductive
- Ships with captive mounting screws
- Includes additional gasket material for knockouts
- 2-Hour Fire Rating

CATALOG NUMBER	UPC/DCI/NAED MFG #018997	DESCRIPTION/ CU. IN.	UNIT PKG	STD PKG	DIM A	DIM B	DIM C
F426F†	06903	Round screw-on 28.0 cu. in.	20	20	6.250	4.233	.500
FN430F	15100	Round nail-on 30.5 cu. in.	20	20	6.250	4.230	.500
FN440F*	15120	Round nail-on 39.5 cu. in.	20	20	6.250	4.210	1.250



F426F



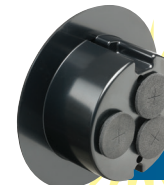
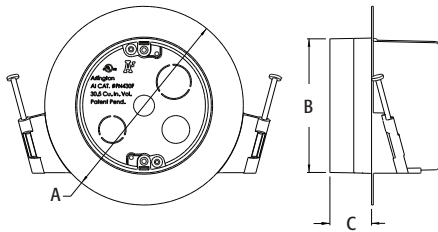
FN430F



*For use with double drywall installation.
† F426FGC is cULus listed.

Add suffix "GC" to Catalog # when ordering in Canada, for example F426FGC.
Refer to chart on page R-24 for load ratings and number of single conductors.
Refer to Q-11 for additional Vapor Boxes.

PATENTED.



F426F

NEW! NM cable connectors with gasket material already installed!
Save time by sealing knockouts before installation