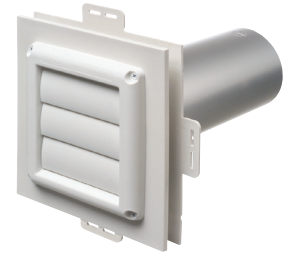


Dryer Vent Mounting Block Kit

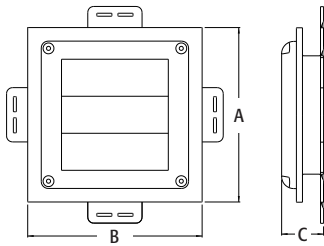
Non-metallic dryer vent mounting block for new construction.

**FEATURES AND BENEFITS**

- Provides a secure, attractive and time saving way to install dryer vents on new siding
- Installs before siding is up and fits 1/2" and 5/8" step, and Dutch Lap siding
- Textured, paintable surface
- Overhang covers cut ends of siding for a clean, neat look
- Easy to install—provides an attractive, flush-look mounting
- UV rated plastic for long outdoor life



CATALOG NUMBER	UPC/DCI/NAED MFG #018997	SIDING TYPE	UNIT PKG	STD PKG	DIM A	DIM B	DIM C
DV1	43607	All Types	1	1	7.930	7.930	1.738



Kit includes a low profile, louver-type hood; a snap together 4" diameter x 11" aluminum tube; and a siding block with built-in J-channel.