

Concrete Floor Boxes with Metal Covers

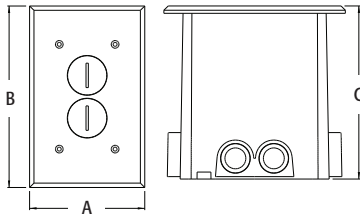
FLOOR BOXES - CONCRETE

Competitively priced, clean, and neat concrete floor boxes. For New Concrete pours.

FEATURES AND BENEFITS

- Non-metallic boxes with gasketed metal covers in brass or nickel-plated brass
- Cover gasket prevents water intrusion
- Competitively priced
- Threaded plugs or flip lids protect receptacle when not in use

CATALOG NUMBER	UPC/DCI/NAED MFG #018997	DESCRIPTION	UNIT PKG	STD PKG	DIM A	DIM B	DIM C
RECTANGULAR COVER							
THREADED PLUGS							
FLBC101MB	52265	Brass	1	1	4.125	6.500	6.199
FLBC101NL	52452	Nickel-plated brass	1	1	4.125	6.500	6.199
FLIP LIDS							
FLBCF101MB	52454	Brass	1	1	4.152	6.022	6.199
FLBCF101NL	52455	Nickel-plated brass	1	1	4.152	6.022	6.199



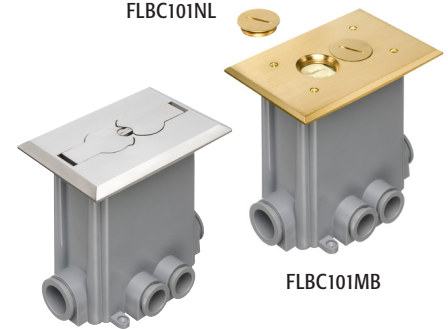
Scan For Video



PATENTED.



FLBC101NL



FLBC101MB

FLBCF101NL

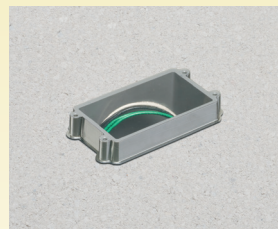
INCLUDES...

Concrete box, mud cover, (4) 3/4" plugs, (2) 1" plugs, (1) 1/8" spacer, (1) 1/4" spacer, (1) 1/2" spacer and (1) 3/4" spacer, mounting bracket, duplex receptacle, gasketed cover plate, (5) #6-32 x 1/2" long cover plate screws, (4) #8 x 5/8" long sheet metal screws, #8 x 1-1/4" long sheet metal screws and threaded plugs (or flip lids)

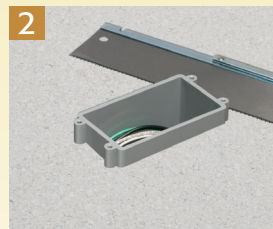
INSTALLATION INSTRUCTIONS



1 Install mud cover; set concrete box. Install plugs in openings not used for conduit. Pull conductors through openings.



(Concrete poured around box.)



2 After concrete sets, trim box to finished floor height.



3 Install mounting bracket on concrete box...



4 ...through (4) outer holes on bracket, into corresponding holes in the box (#8 screws provided).



5 Wire tamper-resistant receptacle; install in box.



Install back plate and gasketed cover (#6-32 screws provided). Insert threaded blanks.



Supplied spacers allow for adjustment to final floor thickness.