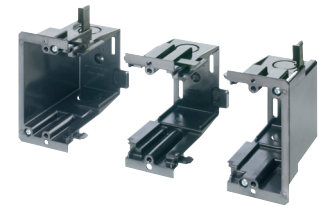
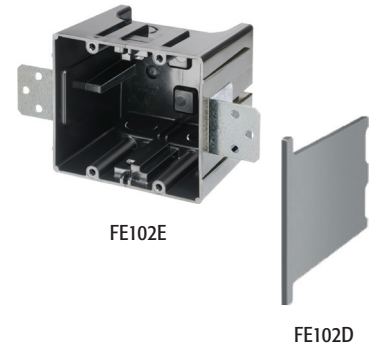


Build the box you need with these nail and screw-on gangable plastic boxes for new & retrofit work.

**FEATURES AND BENEFITS**

- Use a screwdriver to disassemble or separate the parts. Add or remove the center section(s), then snap the pieces back together...fast and easy!
- Great-looking installation of multiple gang boxes
- Nail-on style for new construction or screw-on style for new or old construction
- For old work, mounting wings hold the box securely against the wall

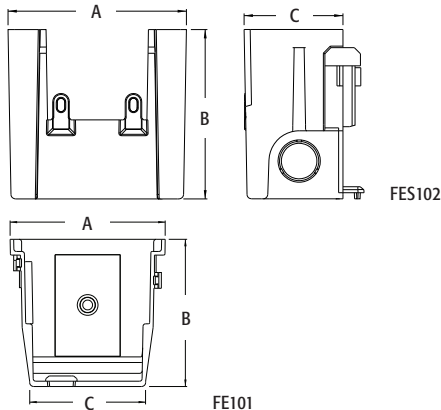
| CATALOG NUMBER | UPC/DCI/NAED MFG #018997 | DESCRIPTION   | UNIT PKG | STD PKG | DIM A | DIM B | DIM C |
|----------------|--------------------------|---|----------|---------|-------|-------|-------|
| FE102C         | 01582                    | Each adds one gang<br>Center section for FEN102 and FES102                | 10       | 10      | 3.688 | 3.500 | 2.686 |
| FE102D         | 01586                    | Optional Voltage Divider  | 25       | 25      | 3.476 | 3.335 | .125  |
| FE102E         | 01585                    | 2-Gang (includes 2 brackets)<br>Mounts with brackets for new construction | 10       | 10      | 4.250 | 3.500 | 2.236 |
| FEN102         | 01580                    | 2-Gang (includes 1 bracket)<br>Nail-on for new construction               | 1        | 10      | 6.002 | 3.500 | 2.044 |
| FER102         | 01583                    | 2-Gang w/ mounting wing<br>screws for old work                            | 1        | 10      | 4.258 | 3.500 | 2.097 |
| FER102C        | 01584                    | Each adds one gang<br>Center section for old work use with FER102         | 10       | 10      | 3.615 | 3.500 | 1.812 |
| FES102         | 01581                    | 2-Gang (includes 1 bracket)<br>Screw-on for retrofit or new construction  | 1        | 10      | 3.688 | 3.500 | 2.044 |
| FE101          | 06930                    | Single-gang plate<br>Converts any box to single-gang                      | 10       | 10      | 3.688 | 3.500 | 2.754 |



FER102 screw-on with one FER102C center



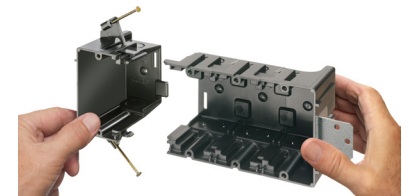
FES102 screw-on with one FE102C center



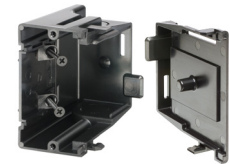
Scan For Video



PATENTED.



FEN102 nail-on with two FE102C centers

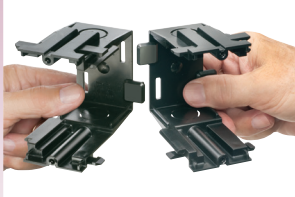


FES102 screw-on with FE101 plate  
Snap together to create single gang box.

**UL Listed**  
up to  
**10 GANGS**  
(two end sections plus up to 8 center sections)

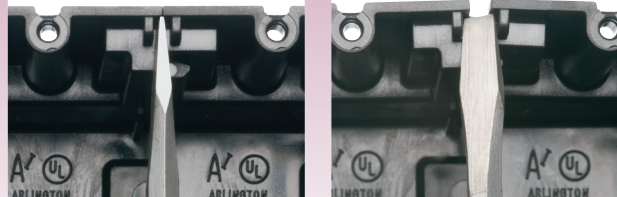
**INSTALLATION INSTRUCTIONS**

**Assemble**



Each section adds one gang to the box. Snap the pieces together to make your desired box.  
From three to ten gangs.

**Disassemble**



To disassemble or separate the parts, insert a screwdriver between the tabs at the top of the box (on each side) as shown above, and twist.



FEN102 nail-on with five FE102C centers