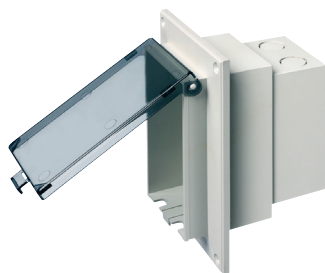
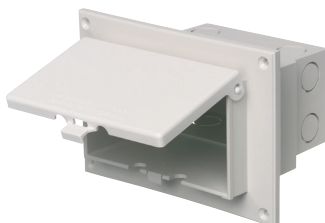


Low Profile IN BOX® for Flat Surface Retrofit Construction

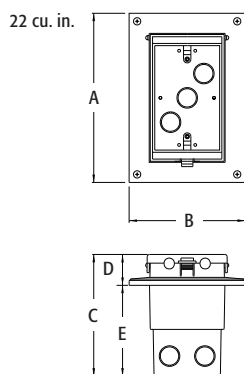
IN BOX®



DBVR1C



DBHR1W



IN BOX for retrofit, flat surfaces includes...

Box with weatherproof-in-use extra-duty cover; installed bug plugs; (1) standard duplex and (1) standard GFCI face plate; (1) set installation screws; (1) NM cable connector; and (1) roll of caulk.

Scan For Video



One-piece, 22.0 cu. inch recessed electrical box with weatherproof-in-use extra-duty cover for flat surfaces in existing construction. Non-metallic cover and base. Accepts most single gang wiring devices and uses standard indoor wall plates or a GFCI cover plate. Box and white cover are textured/ paintable. UV rated plastic for long outdoor life.

FEATURES AND BENEFITS

- IN BOX's one-piece assembly replaces the installation of an electrical box and bubble cover assembly
- Installs in the wall, so less of it shows outside
- Use the retrofit IN BOX on plywood, T-111, and other flat surfaces
- Install option: Cover is removable for easier device installation
- No gaskets required

CATALOG NUMBER	UPC/DCI/NAED MFG #018997	ORIENTATION/COVER COLOR	UNIT PKG	STD PKG	DIM A	DIM B	DIM C	DIM D	DIM E
DBVR1C	14313	Vertical/Clear	1	4	7.186	4.934	5.160	1.313	3.847
DBVR1W	14314	Vertical/White	1	4	7.186	4.934	5.160	1.313	3.847
DBHR1C	77604	Horizontal/Clear	1	4	4.934	7.186	5.160	1.313	3.847
DBHR1W	77606	Horizontal/White	1	4	4.934	7.186	5.160	1.313	3.847

Note: Meets 2015 CEC (Rule 26-702), NEMA 3R, 2017 NEC 406.9 (b); Where a weatherproof-in-use cover is required for 15 or 20 AMP receptacles installed outdoors.

Add suffix "GC" to Catalog # when ordering in Canada, for example DBVR1CGC.

Replacement covers available on page K-17.

2-Gang style available on page K-8.

PATENTED. ADDITIONAL PATENTS PENDING.

**WEATHERPROOF-IN-USE
EXTRA-DUTY**



E170558 LR49636



Bug Plugs ship installed in all IN BOX styles to seal unused cord hole openings.

INSTALLATION INSTRUCTIONS



1 Cut a 3-1/4" x 5-1/2" hole in substrate. Pull wiring.



2 Apply the supplied caulk around back edges of flange. Install NM cable connector and wire, then press onto surface.



3 Attach IN BOX with stainless steel screws (provided).



4 Install wiring device per manufacturer's instructions, Local and National Electrical Codes.



Accepts most single gang wiring devices, and uses a standard indoor wall plate. DBVR1C shown.



DBVR1W shown. IN BOX Saves Time. Looks Great!