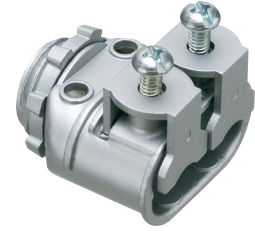


**Duplex SADDLE GRIP® Connectors**

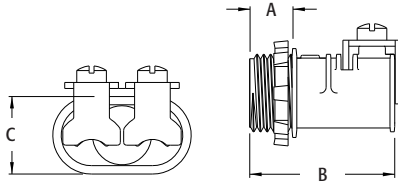
Zinc die-cast. For aluminum and steel Flex • AC • AC90 • MCI • MCI-A cable.

CATALOG NUMBER	UPC/DCI/NAED MFG #018997	TRADE SIZE	KO SIZE	UNIT PKG	STD PKG	DIM A	DIM B	DIM C	CABLE RANGE
SG3838	17383	3/8	1/2	25	100	.452	1.526	.780	(2) .445-.610
SG3838A*	36205	3/8	1/2	25	100	.512	1.586	.780	(2) .445-.610



With independent securing of cables, you can use two different size cables. Refer to chart on page E-27 for list of cable types. See page E-30 and E-31 for MCI-A cable ranges.

\*Provided with insulated throat. Concrete tight when taped.



FLEX • AC • MC