

Pipe Hangers

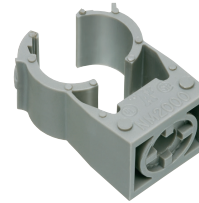
One-piece. Non-metallic. UV rated.

FEATURES AND BENEFITS

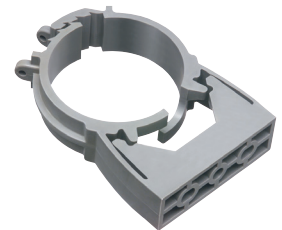
- Saves 25 seconds per installation...over 20¢ at \$30.00 per hour labor rate
- Costs the same as a steel pipe hanger with bolt and nut
- Conduit snaps into place, locking automatically
- Accommodates thin-wall, rigid conduit, PVC conduit, or copper
- Mounts horizontally or vertically
- UV rated for outdoor application
- Corrosion resistant
- Listed for use in environmental air handling spaces per 2017 NEC code requirement 300.22(c)
- 2-1/2" to 4" hangers feature tabs with openings for the optional securing of a cable tie



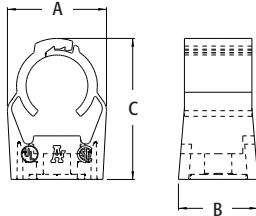
NM1000



NM2000



NM2080



QuickLATCH™
Use it anywhere
you would use a pipe hanger!

CATALOG NUMBER	UPC/DCI/NAED MFG #018997	RIGID SIZE*	EMT SIZE	LT SIZE	FLEX SIZE	ENT SIZE	COPPER TUBING	COPPER PIPE	STD PKG	DIM A	DIM B	DIM C
NM1000†	54615	-	-	-	-	-	-	-	100	1.563	.777	1.563
NM1900	54514	-	-	5/16	-	-	1/2	-	100	.844	.668	1.270
NM2000	54515	-	1/2	3/8	-	-	-	3/8	100	.922	.795	1.412
NM2005	54525	1/2	-	1/2	1/2	1/2	-	1/2	100	1.077	.795	1.588
NM2010	54516	-	3/4	-	-	-	3/4	-	100	1.178	.800	1.667
NM2015	54526	3/4	-	3/4	3/4	3/4	-	3/4	100	1.277	.800	1.826
NM2020	54517	-	1	-	-	-	1	-	100	1.377	.790	1.983
NM2025	54518	1	-	1	1	1	-	1	100	1.582	.830	2.180
NM2030	54528	-	1-1/4	-	-	-	1-1/4	-	100	1.700	.820	2.346
NM2040	54519	1-1/4	1-1/2	-	-	-	1-1/2	1-1/4	100	1.830	.830	2.523
NM2045	54544	1-1/2	-	1-1/2	1-1/2	-	-	1-1/2	100	2.212	.860	2.846
NM2150	54547	-	-	-	-	-	2	-	50	2.640	.910	3.100
NM2050	54520	2	2	2	2	-	2	-	50	3.020	.910	3.470
NM2060	54521	2-1/2	2-1/2	2-1/2	2-1/2	-	-	-	50	3.460	1.115	5.095
NM2070	54522	3	3	3	3	-	-	-	25	4.224	1.362	6.153
NM2080	54523	3-1/2	3-1/2	3-1/2	3-1/2	-	-	-	25	4.720	1.548	7.000
NM2090	54592	4	4	4	4	-	-	-	10	5.365	1.743	7.850

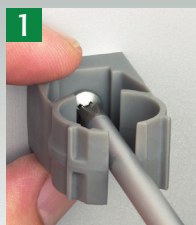


*Rigid sizes also same for IMC and PVC.

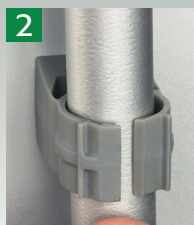
For additional information on QuickLATCH plumbing applications, call or visit our website.

†PATENTED.

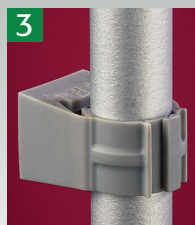
INSTALLATION INSTRUCTIONS



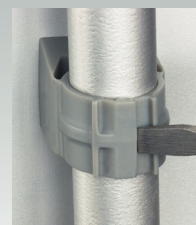
1
Mount to wall, strut, stud, or threaded rod up to 1/4-20



2
Press pipe down firmly into QuickLATCH to lock it in place



3
That's it!



To Remove:
Use a screwdriver to lift tab.

Scan For Video

