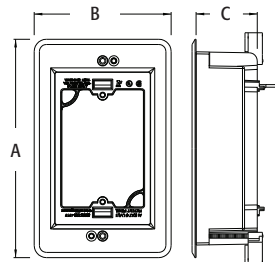


Recessed Low Voltage Mounting Brackets



LVU1W



Single through 4-gang brackets for retrofit or new construction. Available in paintable white (trim plate). Designed to install low voltage Class 2 only.

FEATURES AND BENEFITS

- Non-metallic
- Suitable for old or new work
- Quick and easy installation and it's recessed so connectors don't extend past the wall surface
- Adjusts to fit 1/4" to 1-1/2" wall thicknesses
- Mounting wings hold bracket securely against wall when screws are tightened
- Recessed bracket includes loops for tie-off; two attachable knockouts; one device plate; one trim plate; and four screws

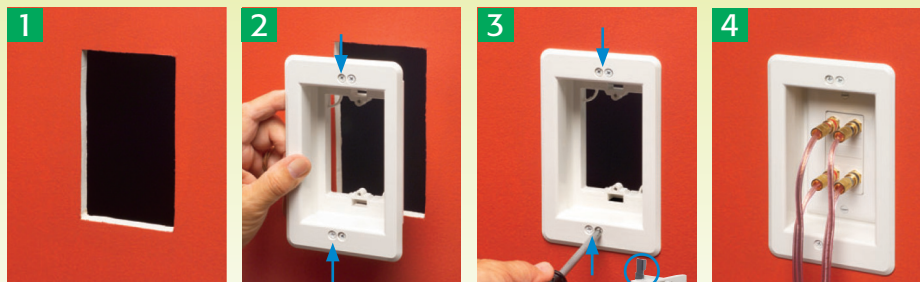
CATALOG NUMBER	UPC/DCI/NAED MFG #018997	DESCRIPTION	UNIT PKG	STD PKG	DIM A	DIM B	DIM C
LVU1W	00285	Single Gang/White	1	4	6.698	4.200	2.000
LVU2W	20011	2-Gang/White	1	4	6.698	6.012	2.048
LVU3W	20012	3-Gang/White	1	1	6.818	7.930	2.048
LVU4W	20013	4-Gang/White	1	1	6.818	9.742	2.048

Add suffix "BL" to Catalog # instead of "W" when ordering in black, for example LVU1BL.
PATENTED.



E253895 LR49636

INSTALLATION INSTRUCTIONS FOR EXISTING WALL



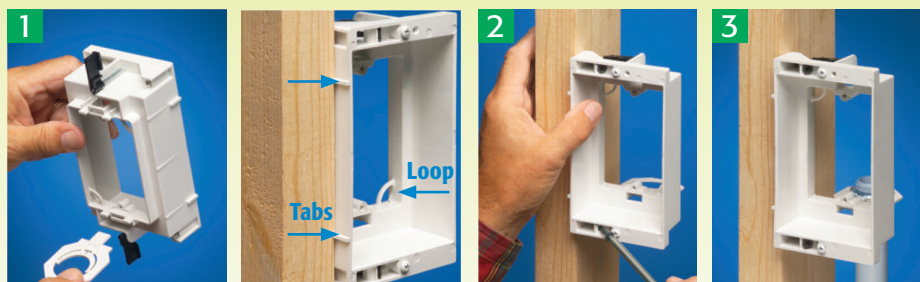
1 Determine bracket location. Using bracket without trim plate as a template. Level. Mark. Cut hole.

2 Attach trim plate to bracket with supplied screws. Insert bracket assembly into opening.

3 Tighten mounting wing screws to hold bracket securely against wall board.

4 Finished installation. LVU1W shown. Connectors *stay inside* this recessed low voltage mounting bracket.

INSTALLATION INSTRUCTIONS FOR NEW WORK



1 **Option:** Insert knockouts in openings (back) if installing conduit. Knockouts fit 3/4" (as shipped) and 1" (break out center).

Note positioning tabs and loops for tying off cable.

2 Mount bracket to stud.

3 **Option:** Attach 3/4" or 1" conduit as desired (3/4" shown).