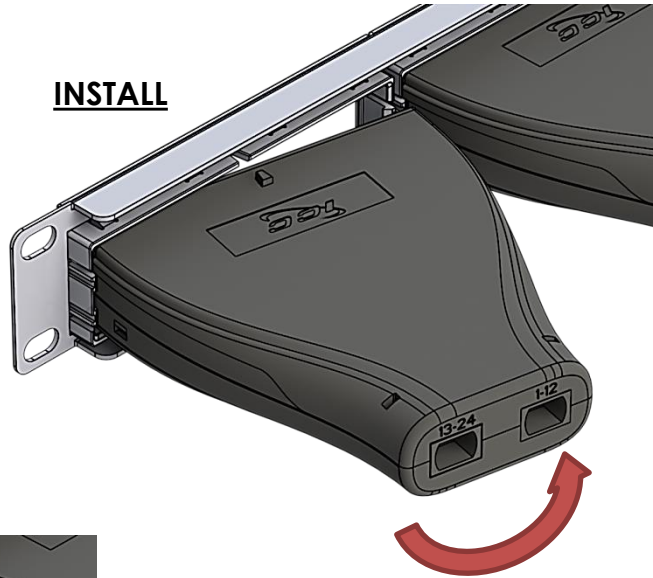




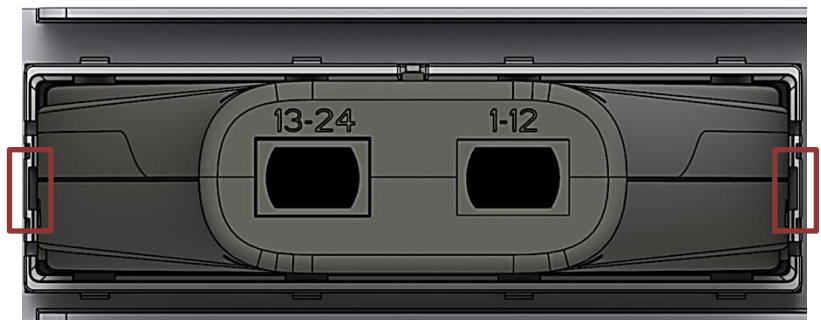
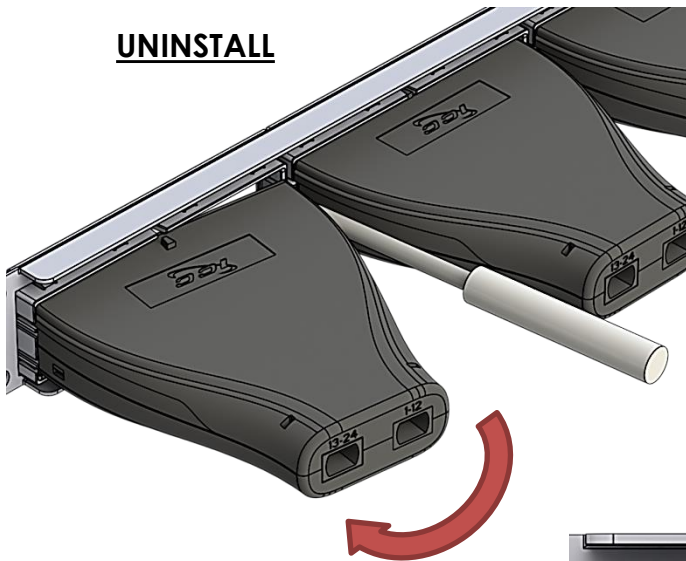
HD MPO Cassettes Patch Panel

INSTALLATION INSTRUCTIONS

INSTALL



UNINSTALL



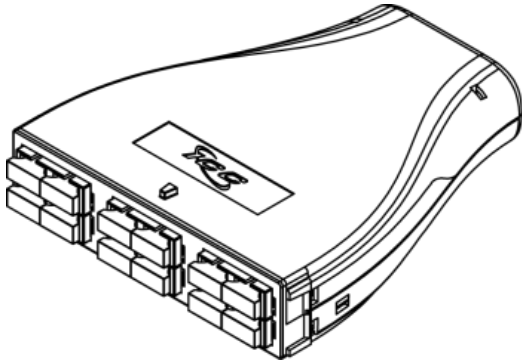
Insert flat/slotted screw driver into either side tab to remove cassettes.

888-ASK-4ICC

csr@icc.com

icc.com

HD MPO Cassettes Patch Panel



SC To MPO Cassettes

ICFC12MSPG - 12-Fiber, OM3, 50/125
ICFC12MSP5 - 12-Fiber, OM2, 50/125
ICFC12MSP6 - 12-Fiber, OM1, 62.5/125
ICFC12SSP9 - 12-Fiber, OS1, 9/125



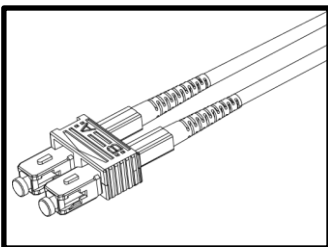
LC To MPO Cassettes

ICFC24MLPG - 24-Fiber, OM3, 50/125
ICFC24MLP5 - 24-Fiber, OM2, 50/125
ICFC24MLP6 - 24-Fiber, OM1, 62.5/125
ICFC24SLP9 - 24-Fiber, OS1, 9/125

FEATURES & BENEFITS

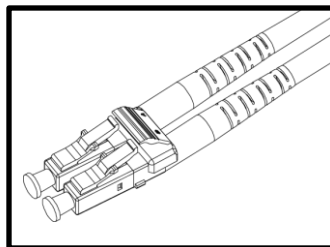
- High quality ABS, UL94V-0 material allows for compact and durable cassettes.
- Cassette offers a plug and play solution which saves assembly and termination time.
- Design to fit ICC's Fiber Optic Blank Patch panel 1 RMS, IC107PPC04
- MPO connector reduces insertion loss which enhances channel link performance.
- Suitable for any applications with a need for high bandwidth with longer distances.
- LC to MPO cassettes allows up to 96 fibers within 1 RMS / SC to MPO cassettes allows up to 48 fibers within 1 RMS
- Available in black

OPTIONAL ACCESSORIES



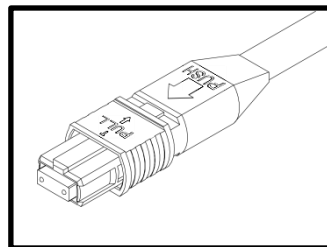
SC-SC Jumper

ICFOJ8C7xx 50/125, 10G
ICFOJ8G7xx 50/125, MM
ICFOJ8C3xx 62.5/125, MM
ICFOJ8C5xx 9/125, SM



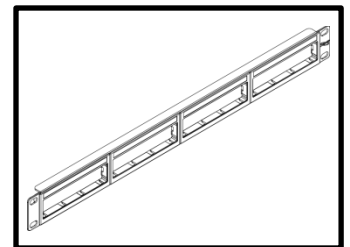
LC-LC Jumper

ICFOJ1G7xx 50/125, 10G
ICFOJ1M7xx 50/125, MM
ICFOJ1M3xx 62.5/125, MM
ICFOJ1M5xx 9/125, SM



MPO-MPO 12-Fiber Jumper

ICFOJATGxx 50/125, 10G
ICFOJATMxx 50/125, MM
ICFOJATNxx 62.5/125, MM
ICFOJATSxx 9/125, SM



Fiber Optic Blank Patch Panel

IC107PPC04 Plug and Play Cassette , 1 RMS

888-ASK-4ICC

csr@icc.com

icc.com