

6

5

4

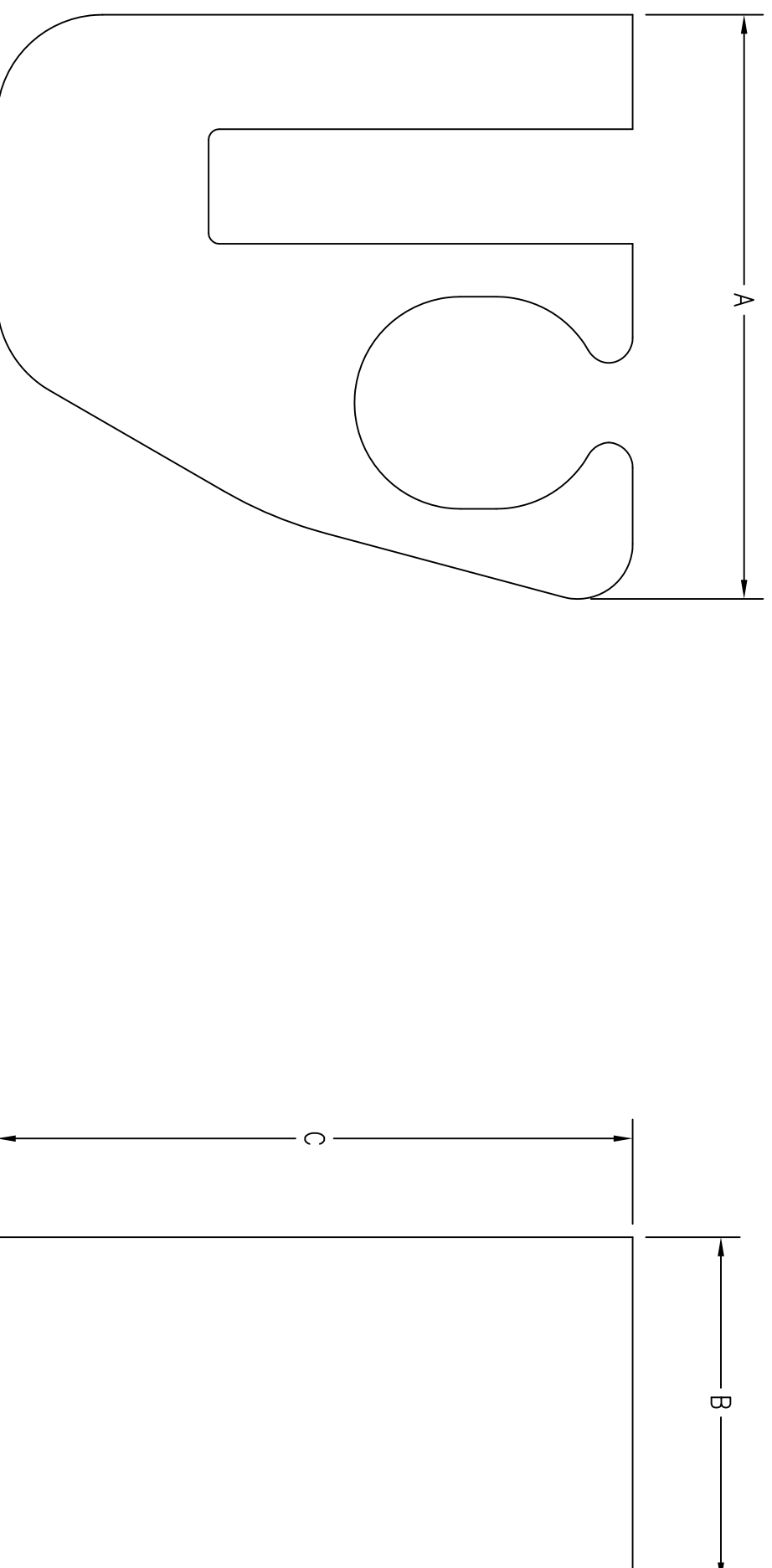
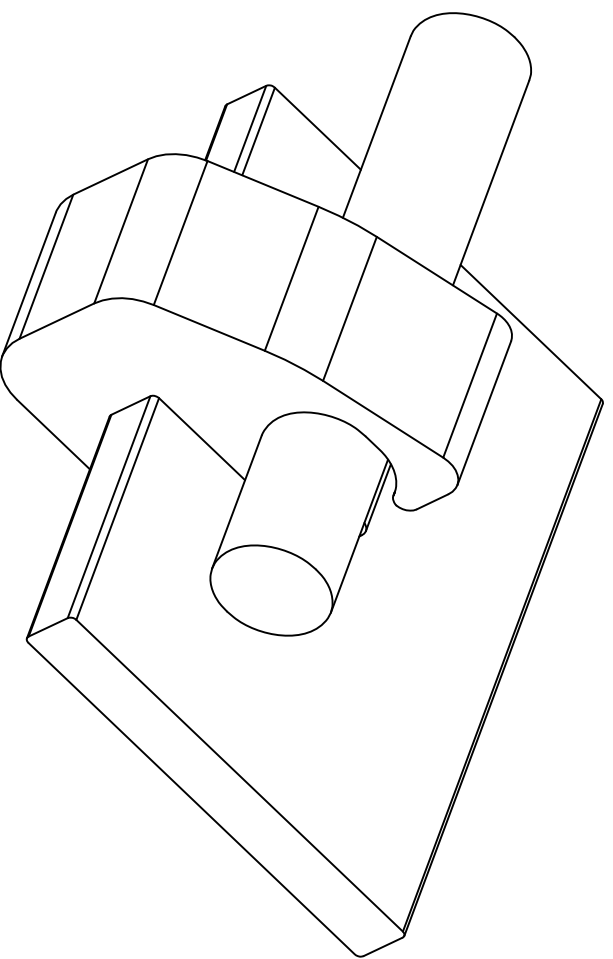
3

2

1

CONDUCTOR ACCOMMODATION

HPW CATALOG NO.	RUN	TAP	A	B	C
HYG14BTC28	1/8" [3.18mm]-1/4" [6.35mm] THICK COPPER BUSBAR	4/0 AWG STR TO 1/0 AWG STR COPPER	1.378" [35mm]	.812" [20.6mm]	1.500" [38.1mm]



BURNDY
YG14BTC26
U1105
2/0 AWG 1/4 CU.
BURAL

TYPICAL STAMPING

NOTES:

1. MATERIAL: PURE WROUGHT COPPER ALLOY.
2. CONDUCTOR AND BUSBAR GROOVES PREFILLED WITH PENETROX™ S4.
3. INSTALLED WITH ONE CRIMP USING THE HU1105 DIE SET, WITH THE HY750 HYDRAULIC TOOL.
4. DIMENSIONS IN BRACKETS [] ARE IN MILLIMETERS ROUNDED TO THE NEAREST MILLIMETER, UNLESS OTHERWISE SPECIFIED, AND ARE FOR REFERENCE ONLY.
5. YG14BTC28 AND YG14BTC28TP ARE cULus (CANADA AND USA) LISTED TO UL467 GROUNDING AND BONDING EQUIPMENT.
6. SPECIFICATIONS SUBJECT TO CHANGE WITHOUT NOTICE.

REV.	ECN	DATE	DESCRIPTION	CHG BY	APPD BY
1	17987	8/13/12	INITIAL RELEASE	CG	

Created on AUTOCAD		<p>DIMENSIONING AND TOLERANCE PER ANSI Y14.5M-1982 UNLESS OTHERWISE SPECIFIED, DIMENSIONS ARE IN INCHES (MM). TOLERANCES:</p> <p>.XX = ±.01 (.25) .XXX = ±.005 (.127) .XXXX = ±.0025 (.0635) ANGLE TOL ±.1°</p> <p>IN ACCEPTING OUR DRAWINGS, BLUEPRINTS, OR SUPPORTING DOCUMENTATION FOR QUOTATION OR OTHER PURPOSES, YOU AGREE NOT TO DISCLOSE TO OTHERS THE IDEAS, INFORMATION, OR DESIGNS SHOWN HEREIN, AND THAT YOU WILL MAKE NO USE OF SAME WITHOUT PERMISSION</p>	
PROJECT REFERENCE:	2011-041	DRAWN BY:	C. GRIBBLE 8/13/12
MATERIAL:	SEE NOTES	CHECKED BY:	
APPROVED BY:		APPROVED BY:	
<p>Hubbell Premise Wiring HUBBELL INCORPORATED (Delaware) 23 CLARA DRIVE, SUITE 103 MWSTIC, CT 06355</p>		TITLE:	BUSBAR TAP, 4/0, COPPER
SIZE	DRAWING NO.	SCALE:	REV.
C	HWS14143C	1/1	1
SHEET 1 OF 1			