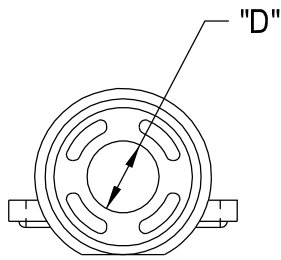
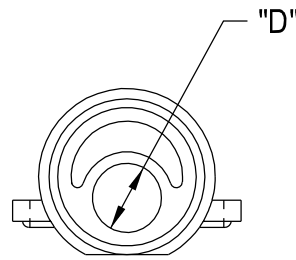


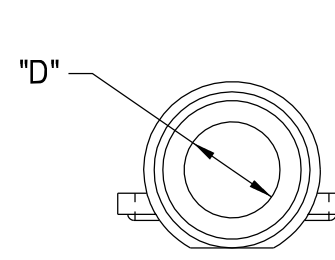
840



8400



8401



8402 THRU 8410

8410	3 1/2"	.970	2.194	4.392
8409	3"	.994	2.033	3.890
8408	2 1/2"	.875	1.872	3.235
8407	2"	.750	1.540	2.594
8405	1 1/2"	.723	1.460	2.120
8404	1 1/4"	.640	1.302	1.872
8403	1"	.540	1.184	1.500
8402	3/4"	.475	1.060	1.125
8401	1/2"	.400	.860	.876
8400	3/8"	.400	.860	.876
840	3/8"	.400	.860	.876
PART NO.	TRADE SIZE	"A"	"B"	"C"

