

GV-GVS2100 1CH H.265 Combo 5MP Video Server



- AI deep learning: AI Perimeter Protection & Classification (Human & Vehicle)
- Triple streams from H.265, H.264 and MJPEG
- Up to 20 fps at 2592 x 1944
- Built-in micro SD card slot (SD / SDHC / SDXC / UHS-I, Class 10) for local storage
- Two-way audio capable
- 8 sensor inputs and 4 alarm outputs
- DC 12V / PoE (IEEE 802.3af)
- TVI / AHD / CVI / CVBS
- Motion detection
- AI analytics (Object Abandoned/Missing, Line Crossing, Region Entrance, Region Exiting, Region Intrusion, Target Counting, Face Detection, Heat Map)
- Privacy mask
- Text overlay
- IP address filtering
- Tampering Alarm
- Support UTC (Up-The-Coax) control
- 12 languages supported
- ONVIF (Profile G, S, T) conformant

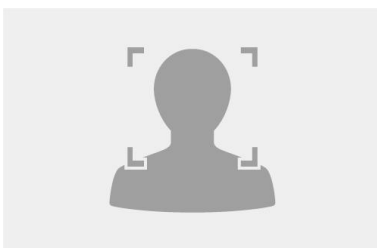
Introduction

GV-GVS2100 is a powerful H.265 Video Server with compact size and supports TVI / AHD / CVI / CVBS analog real-time video. It converts analog signals into high-resolution digitalized images of up to 5 megapixels. It can record videos to the inserted micro SD card, performing as a compact video recorder.

Empowered by deep learning algorithms, AI technology distinguishes human and vehicles from other moving objects. Integrated with GeoVision Video Management Software (VMS), it supports AI perimeter protection, real time alert, events playback and more.

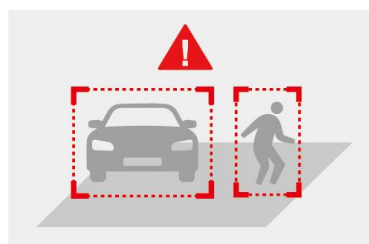
Deep Learning Function

Face Detection

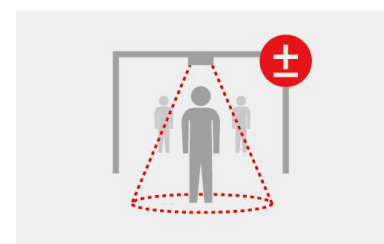


AI Perimeter Protection

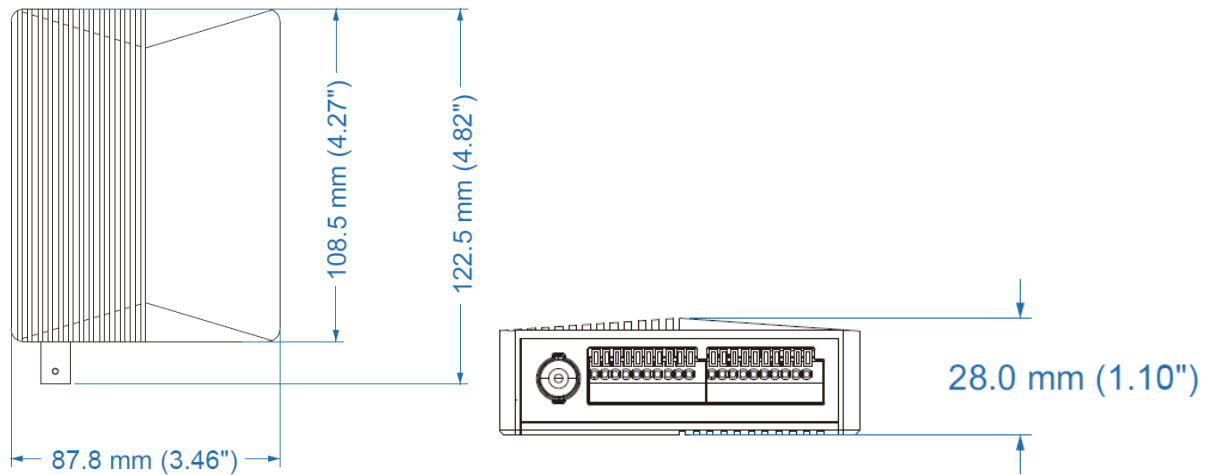
(Intrusion, Crossing Line
Entering Area, Leaving Area)



People Counting



Dimensions



Specifications

Video		
Video Standard	NTSC, PAL	
Video Input	1 channel	
Compression	H.265, H.265+, H.264, H.264+, MJPEG	
Video Streaming	Triple streams	
Signal Type	<ul style="list-style-type: none"> - TVI / AHD / CVI: 5 MP at 20 fps; 4 MP / 1080p / 720p at 30 fps - CVBS: 960H at 30 fps (NTSC), 25 fps (PAL) 	
Video Resolution	Main Stream	2592 x 1944 (Default), 2560 x 1440, 1920 x 1080, 1280 x 720, 704 x 480
	Sub Stream	1280 x 720 (Default), 704 x 480, 352 x 240
	Third Stream	704 x 480 (Default), 480 x 240, 352 x 240
Frame Rate	<ul style="list-style-type: none"> - 20 fps at 2592 x 1944, 20 fps at 2560 x 1440, 20 fps at 1920 x 1080, 20 fps at 1280 x 720, 20 fps at 704 x 480, 20 fps at 352 x 240, 20 fps at 480 x 240 - 30 fps at 1920 x 1080, 30 fps at 1280 x 720, 30 fps at 704 x 480, 30 fps at 352 x 240, 30 fps at 480 x 240 (60 Hz) - 25 fps at 1920 x 1080, 25 fps at 1280 x 720, 25 fps at 704 x 480, 25 fps at 352 x 240, 25 fps at 480 x 240 (50 Hz) <p>*The frame rate and the performance may vary depending on the number of connections and data bitrates (different scenes).</p>	
Video Analytics	Motion Detection, Video Exception Detection (Scene Change, Video Blur and Abnormal Color Detection), Object Abandoned/Missing Detection	
Smart Alarm	Motion Detection, Sensor Alarm, SD Card Error, SD Card Full, IP Address Conflict, Cable Disconnection	
Heat Map	On / Off	
Image Setting	Brightness, Contrast, Saturation, Hue, Sharpness, WDR, Noise Reduction, Defog, Image Orientation (Flip, Mirror, 0°, 90°, 180°, 270° - including Corridor format)	
Audio		
Audio Input	1 port, 1 channel	
Compression	G.711	
Audio Support	Two-way audio capable (external microphone and speaker required)	
Management		
Firmware Upgrade	Remote upgrade by HTTP, Firmware upgrade utility	
Local Storage	Micro SD card slot (SD / SDHC / SDXC / UHS-I, Class 10), max. 256 GB *UHS-II card type is not supported.	
Security	IP address filtering	
Language	Czech, English, French, German, Hungarian, Italian, Japanese, Polish, Portuguese, Russian, Spanish, Traditional Chinese	
Max Number of Live Streams	10	
Max Number of RTSP Streams	10	

Network		
Interface	100 Mbps Ethernet	
Protocol	UDP, IPv4, IPv6, DHCP, NTP, RTSP, RTMP, PPPoE, DDNS, SMTP, FTP, SNMP, 802.1x, UPnP, HTTPS, HTTP POST, QoS, ONVIF	
Deep Learning Function		
AI Perimeter Protection	-Line Crossing, Region Entrance, Region Exiting, Region Intrusion, Target Counting, Heat Map: Human & Vehicle classification -Face Detection	
External Interface		
Video Input	1 BNC port	
Audio Input	1 In (stereo phone jack, 3.5 mm / 0.14")	
Audio Output	1 Out (stereo phone jack, 3.5 mm / 0.14")	
Sensor Input	Input	8 inputs, dry contact, NO / NC
	Output	4 relay outputs (24 V DC / 1 A 125 V AC)
Ethernet	RJ-45, 100 Mbps	
USB	1 port (USB 2.0, not functional)	
Power	Input	DC 12 V, 1.2 A / PoE (IEEE 802.3af)
	Output	DC 12 V, 0.5 A (Max. 5.5 W)
Environment		
Operation Temperature	-30 °C ~60 °C (23 °F ~ 122 °F)	
Humidity	0% to 95% (no condensation)	
Weather Resistance	Indoor use	
Physical		
Dimensions (L x W x H)	108.5 x 87.8 x 28 mm (4.27" x 3.46" x 1.10")	
Weight	271.4 g (0.60 lb)	
Certification	CE, FCC, RoHS compliant	
Software Applications		
Software Supported	GV-VMS (V17.4.7 or later, V18.3.2 or later), GV-Edge Recording Manager (Windows Version) V2.2.7 or later, GV-Edge Recording Manager (Mac Version) V1.3.0 or later, GV-Control Center V4.1.1 or later, GV-Recording Server V2.1.0 or later	
Smart Device Access	GV-Eye for iOS / Android (V3.1.0 or later)	
Live Viewing	Browser (IE, Edge, Chrome, Firefox, Safari)	



Note:

1. The product requires a BNC cable, which is not included in the packaging. Please prepare one for use.
2. Specifications are subject to change without notice.

Packing List

- | | |
|---------------|--------------------------|
| 1. GV-GVS2100 | 4. Drill Template Paster |
| 2. Mount | 5. Download Guide |
| 3. Screw Kit | |

Accessories

Model No.	Details
GV-PA191	GV-PA191 is a Power over Ethernet (PoE) adapter designed to provide power to the IP device through a single Ethernet cable.
	
GV-PA301	GV-PA301 is a Gigabit Power over Ethernet (PoE) adapter.
	
GV-PoE Switch	The GV-PoE Switch is designed to provide power along with network connection for IP devices. The GV-PoE Switch is available in various models with different numbers and types of ports.
Power Adapter	Contact our sales representatives for the countries and areas supported.