



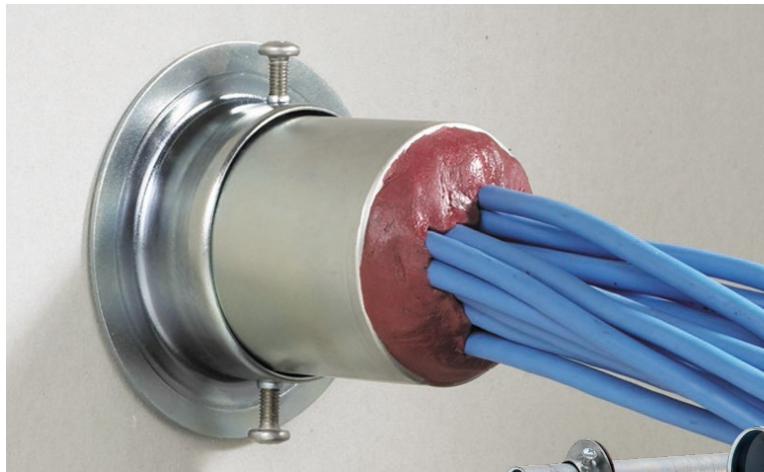
COMPLETE SOLUTION FOR NEW CABLING PENETRATIONS

Ready® Sleeve

SpecSeal® Ready® Sleeve are designed for new cabling penetrations where sleeves are required. Each Ready® Sleeve kit includes a preformed steel sleeve with rolled edges, steel escutcheon plates with intumescent gaskets, and correct volume of our SpecSeal® SSP Firestop Putty. The rolled lip of each Ready® Sleeve eliminate the need for bushings while the included escutcheon plates and gaskets take the place of steel strut and strap supports. The rolled lip of the Ready® Sleeve protects the cables during installation while the escutcheon plates/gaskets lock the device in place without the need for struts or straps as a means of support.

Features & Benefits

- Ready-to-install out of the box saves time on jobs
- Offered in three sizes: 1 in (25 mm), 2 in (51 mm), & 4 (102 mm) in diameter
- Complete kit, ready-to-install out of the box
- Sized for assemblies up to 10 in (25.4 mm) thick
- Oversized escutcheon plates and gaskets available for larger openings



ORDERING INFORMATION

Catalog Number	UPC Number	Size	(UOM) Qty.	Case Qty.	Weight (Each)
FS100	730573201008	1" (25 mm) sleeve (includes escutcheon plates, gaskets, and putty)	1	6	1.02 lbs (0.46 kg)
FS200	730573202005	2" (51 mm) sleeve (includes escutcheon plates, gaskets, and putty)	1	6	2.29 lbs (1.04 kg)
FS400	730573204009	4" (102 mm) sleeve (includes escutcheon plates, gaskets, and putty)	1	6	6.32 lbs (2.87 kg)
FS201	730573202012	2" (51 mm) sleeve (includes oversized escutcheon plates, gaskets, and putty)	1	N/A	2.73 lbs (1.24 kg)
FS401	730573204016	4" (102 mm) sleeve (includes oversized escutcheon plates, gaskets, and putty)	1	N/A	7.59 lbs (3.44 kg)

TEST STANDARDS: ASTM E814(UL 1479), CAN/ULC-S115



1-800-992-1180
stifirestop.com



[Click here to learn more about](#)



ZST13544 00920