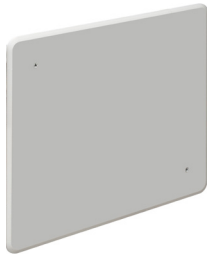




TVBS810



TVBU810



TVB810C

Non-metallic, installation versatility, and perfect for Home Theater Installations. For new or retrofit work.

FEATURES AND BENEFITS

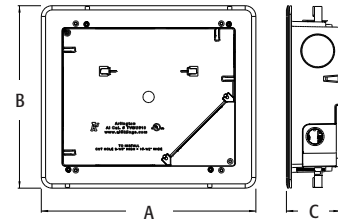
- Accepts standard-style plates with receptacles and decorator-style devices with plates—and Arlington's SCOOP™ series entrance plates and hoods
- Mounting wing screws hold box secure against wall
- Supplied with cover blanks, wall plate, cable entry device (CED130) and cable connectors for unused openings
- 1-1/2" knockout for ENT or other low voltage wiring
- cULus Listed

CATALOG NUMBER	UPC/DCI/NAED MFG #018997	DESCRIPTION	UNIT PKG	STD PKG	DIM A	DIM B	DIM C
TVBS810	09757	8"x10" Power/low voltage box (steel)	1	1	12.531	10.656	3.140
TVBU810*	09758	8"x10" Power/low voltage box	1	1	12.531	10.656	3.140
TVB810C	24193	Cover Fits TVBS810 or TVBU810	1	10	12.530	10.656	0.140

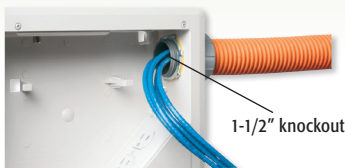
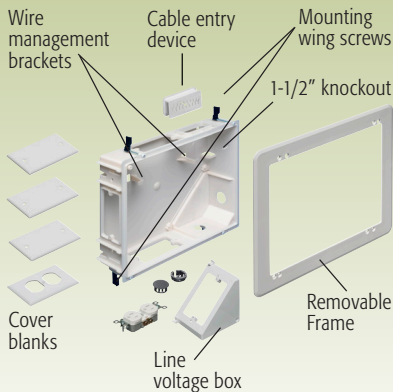
*Add suffix "GC" to Catalog # when ordering in Canada to include grounding clip, for example TVBU810GC.
PATENTED.



Scan For Video

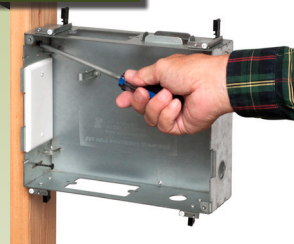


TVBU810 Includes...



INSTALLATION INSTRUCTIONS

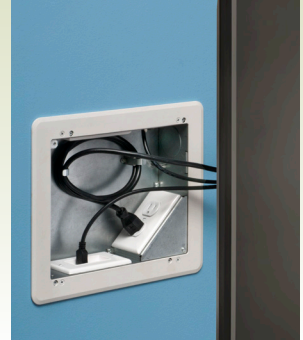
New Work



Retrofit



Finished Installation



Ideal for home theater systems where multiple connections are needed for sound systems, satellite TV, cable TV, DVRs, and more. Box can be installed horizontally or vertically.