

Non-Metallic Outlet Box for New Construction

Adjustable for wall thicknesses from 1/4" to 1-1/2". It's perfect for use when the final wall thickness is unknown. Mounts directly to a wood or steel stud.

FEATURES AND BENEFITS

- Fast and easy to install
- No more set back boxes—IN/OUT BOX depth adjusts before OR after the wall finish is done
- Depth adjustment screw is accessible even after the wall finish is in place
- Secure installation—Mounts to wood or steel studs in new construction
- Complies with 2017 NEC, 314.20 for set back boxes
- FA102D low voltage separator for use with multiple gang versions
- FA101LP is low profile, designed for new work installations with shallower wall cavities
- *2-hour fire rating

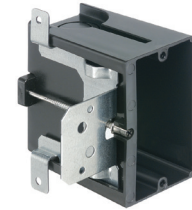
CATALOG NUMBER	UPC/DCI/NAED MFG #018997	DESCRIPTION/ CU. IN.	UNIT PKG	STD PKG	DIM A	DIM B	DIM C
FA101*	04241	Single-gang/Vertical/21.0	25	25	3.720	2.299	3.875
FA101H*	11102	Single-gang/Horizontal/21.0	25	25	3.720	2.299	3.875
FA101LP	76880	Single-gang/Vertical/18.3	25	25	3.720	2.299	3.320
FA102*	04242	2-Gang/43.5	10	10	3.720	4.111	3.875
FA102D	04245	Voltage divider	25	25	3.531	3.775	.105
FA103*	04243	3-Gang/65.0	10	10	3.720	5.923	3.875
FA104	04244	4-Gang/87.0	10	10	3.720	7.735	3.875



Add suffix "GC" to Catalog # when ordering in Canada to include grounding clip, for example FA101GC.

*2-Hour Fire Rating

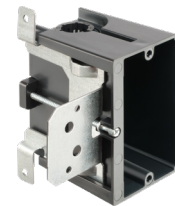
PATENTED.



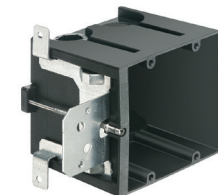
FA101



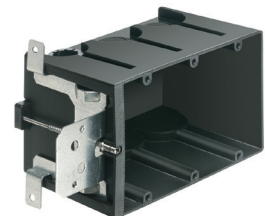
FA101H



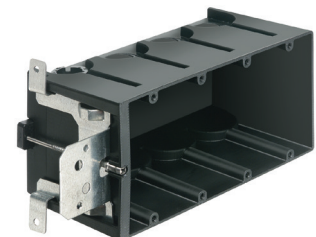
FA101LP



FA102



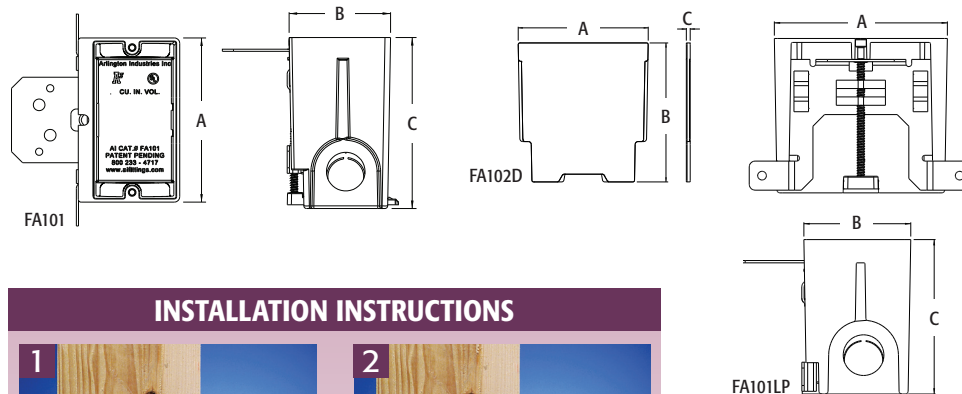
FA103



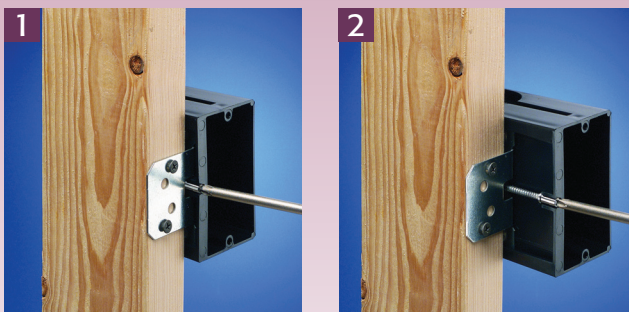
FA104



FA102D



INSTALLATION INSTRUCTIONS



Attach IN/OUT BOX to wood or steel stud with captive installation screws. Feed the wires through the knockout.

If the box is too far forward or back, simply adjust the depth by turning the screw.

*Mounts
DIRECTLY
to wood or
steel stud*