

42528-9 High Speed HDMI[®] Cable With Gripping Connectors - CL2P - Plenum Rated

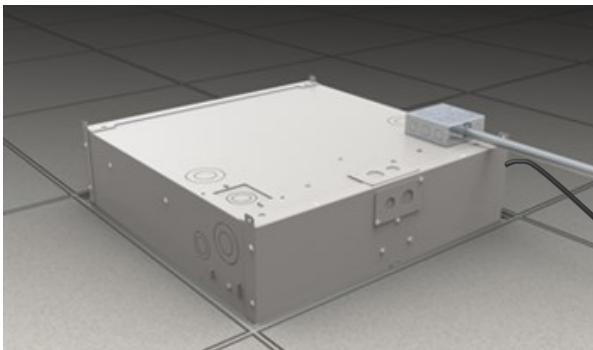
Deliver High Speed HDMI features including UltraHD, 4k at 50/60hz and Ethernet to critical equipment

Product Features

- CL2P plenum rated jacket
- Gripping connector
- Designed to support High Speed HDMI features including Ethernet
- Supports up to 4K video resolution
- Gold plated connectors



Application Setup



This high speed HDMI CL2P plenum rated cable with gripping connectors is designed for connecting multimedia devices in an office, meeting room, or in other commercial environments. This cable can be installed in Audio/Video applications requiring high speed HDMI features while meeting building codes that require CL2P plenum rated cables to be installed. Ensure that your most critical equipment maintains signal with the gripping connectors which provide greater port retention than a standard HDMI connector.

Simplify Connectivity

Strict building code requirements for cabling in plenum spaces have created installation challenges in settings such as schools, hospitals and other commercial buildings. This CL2P rated cable meets all requirements for commercial, industrial, hospital, and school spaces that require CL2P plenum cable to be installed. This cable also ensures that your most critical equipment maintains signal with the gripping connectors which limit the chance that the cable could be accidentally disconnected causing detrimental downtime. There is no need for special locking sockets tie downs or screws that take up extra space and have a higher cost.

Recommended Products To Simplify Connectivity



DisplayPort™, HDMI®,
and VGA to HDMI
Adapter Converter Switch

40848



4K HDBaseT HDMI +
USB Over Cat5 Extender

29510



Wiremold® Evolution™
Ceiling Box with
Projector Mount

16278

Package Contents

- High Speed HDMI Cable With Gripping Connectors - CL2P - Plenum Rated



C2G®

A brand of  **legrand®**

3555 Kettering Blvd.
Moraine, OH 45439
Phone: 800.CABL.911
www.c2g.com

Follow Us

