

READ ME FIRST

# QUICK INSTALL GUIDE



## 24-Port Gigabit Switch AGS-1024

### Includes:

- ▶ One: AGS-1024 24-Port Gigabit Switch
- ▶ Two: Rack-Mounting Ears
- ▶ Four: Rubber Feet
- ▶ One: Power Cable

**LUXUL**

# SETUP AND CONFIGURATION

## 1 Physical Installation

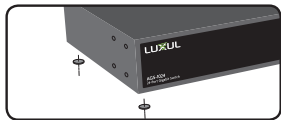
The AGS-1024 can be rack-mounted or used as a desktop switch. Install the AGS-1024 in a stable/safe place to avoid any possible damage. Avoid placement in direct sunlight. Do not place heavy articles on the AGS-1024 and verify the ground connection of the outlet is functioning properly.

### Desktop/Shelf Installation

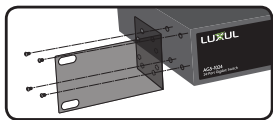
For desktop/shelf installation, attach the four rubber feet to the corner indentations on the bottom of the AGS-1024, then place the switch horizontally on a solid, level platform.

### Rack Installation

Use the included L brackets for convenient installation in a 19-inch server or audio/video rack. Use four screws to attach the L-shaped brackets on both sides of the AGS-1024 as shown below, then install the switch horizontally in the rack. Use your desired hardware to affix the switch brackets to the rack.



*Attach Feet for Desktop Installation*



*Install Brackets for Rack-Mounting*

## 2 Connecting Ethernet and Power

### Ethernet and Power Connections

Use any RJ-45 to connect the AGS-1024 to an Ethernet-enabled device, including servers, routers or other switches. No crossover cable is necessary.

The AGS-1024 supports 10/100/1000 Mbps Ethernet; 10/100 Mbps half/full-duplex mode and 1000 Mbps full-duplex mode.

Use the included power cable to connect the AGS-1024 to a surge protected outlet. The AC input socket and a power switch are on the rear panel. The built-in power supply supports 100-240VAC at 50/60Hz.

---

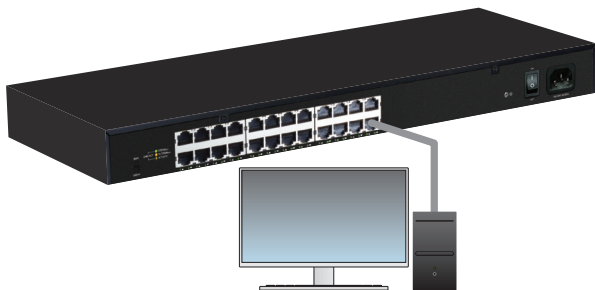
**⚠ CAUTION:** *Use only the correct power cord for your environment. Any voltage other than standard 100/240 will result in damage to the AGS-1024.*

---

### 3 Connecting Devices

Use an Ethernet cable to connect the AGS-1024 to a device as shown below. Luxul recommends Category-5, super Category-5 or Category-6 unshielded twisted pair (CAT5/CAT5e/CAT6 UTP). To ensure best performance and stable data transmission at 1000 Mbps, use Category-6 shielded twisted pair.

The AGS-1024 automatically adjusts to the speed and duplex of the connected device.

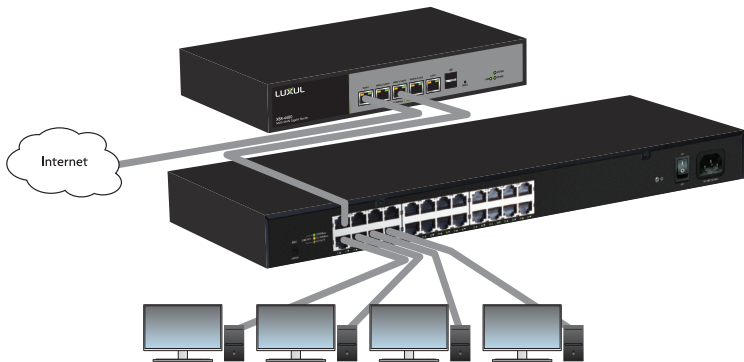


*Connecting the AGS-1024 to a Device*

When a device is properly connected and powered, the Link/Activity LED for the device port lights up. Refer to the Hardware Operation section for indicator definitions and troubleshooting.

## 4 Connecting to a Router or Other Switch

Use an Ethernet cable to connect the AGS-1024 to a router or other switch as shown below. The AGS-1024 automatically adjusts to the speed and duplex of the connected switch or router, so uplink cables are not necessary.

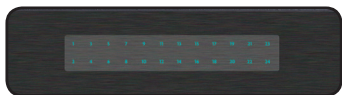


*Connecting the AGS-1024 to Router or Switch*

When a router or switch is properly connected, the Link/Activity LED for each port lights up. Refer to the Hardware Operation section for indicator definitions and troubleshooting.

## 5 Hardware Operation

The front panel of the AGS-1024 switch features one Power LED as well as a Link/Activity LED for each port. The back panel of the switch includes (24) 10/100/1000 Mbps RJ-45 ports, a power connector, and a switch to select blue or green front-panel LEDs. Each Ethernet port has one LED to indicate Link/Activity as well as connection speed.



*AGS-1024 Front Panel*

### Status Indicators

The following table describes the LED functionality for both front and back indicators:

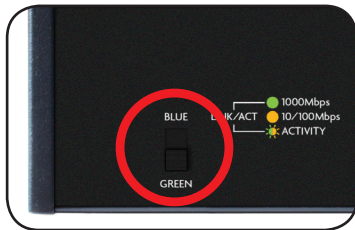
Front		
Indicator	State	Description
Power	On	The AGS-1024 is switched on.
	Off	AGS-1024 is switched off or not connected to AC power. Check power connections and power switch at on the rear of the unit.
Link/Act	On	Device connected to the port.
	Flashing	Port is receiving or transmitting data.
	Off	No device connected to the port or the device is off.

## Back

Indicator	State	Description
Speed/ Link/Act	Green	Gigabit device connected to the port.
	Amber	10/100Mbps device connected to the port.
	Flashing	Port is receiving or transmitting data.
	Off	No device connected to the port or device is off.

## SELECTING FRONT-PANEL LED COLOR

Use the switch on the rear panel of the AGS-1024 to select either blue or green for the Power and System LEDs on the front panel to best match the equipment in the rack where the Switch is sharing space.



*AGS-1024 Selector Switch*

## LEGAL AND REGULATORY INFORMATION

No part of this publication, or any other publication may be modified or adapted in any way, for any purposes without permission in writing from Luxul. The material in this manual is subject to change without notice. Luxul reserves the right to make changes to any product to improve reliability, function, or design. No license is granted, either expressly or by implication or otherwise under any Luxul intellectual property rights. An implied license only exists for equipment, circuits and subsystems contained in this or any Luxul product.

### FCC Compliance

This device complies with Part 15 of the FCC Rules. Operation is subject to the following two conditions: (1) this device may not cause harmful interference, and (2) this device must accept any interference received, including interference that may cause undesired operation.



Hereby, Luxul, 14203 Minuteman Drive, Suite 201, Draper, Utah, 84020, declares that this Luxul AGS-1024 is in compliance with the essential requirements and other relevant provisions of Directive 1995/5/EC.

For a copy of this report send a self addressed stamped envelope to: Luxul CE, 14203 Minuteman Drive, Suite 201, Draper, Utah, 84020.

Industry Canada (RSS-Gen Issue 4)  
CAN ICES-3(B)/NMB-3(B)

### Sales

P: 801-822-5450  
E: sales@luxul.com

### Technical Support

P: 801-822-5450 Option 3  
E: support@luxul.com