

# HUBBELL®

HUBBELL®  
Wiring Systems

## Healthcare Application Guide

*When Safety, Reliability  
and Performance Matter*

*Wiring Device and Datacom Solutions  
for Healthcare Applications*



# The Hubbell Healthcare Story

## When reliability and performance matter



### Hubbell Hospital Grade

Hospital Grade is the receptacle of choice when specifying devices for healthcare. While the green dot signifies UL compliance, hospital grade devices are not all the same. Hubbell was instrumental in creating hospital grade and has been providing maximum value for healthcare facilities ever since.



### Safety

Safety of patients, visitors and healthcare workers is a key concern for hospitals. Hubbell takes safety extremely seriously, providing a variety of products that ensure superior protection of people and property.



- Tamper-Resistant Receptacles
- GFCI and Isolated Ground Receptacles
- Motor Disconnects
- TredTrak® and AccessTrak®
- Watertight Plugs and Connectors
- Stainless Steel Plates
- Hospital Grade Surge Devices
- Liquidtight
- HG LED Receptacles
- Call Switches



### Installation Efficiency

The labor-saving enhancements of Hubbell products keep renovation, modernization, and new construction projects on schedule and allow contractors to complete more jobs in less time.



- Hubbell SNAPConnect® Receptacles
- Hubbell SystemOne Floor Boxes and Fire-Rated Poke-Throughs
- Aluminum Raceway
- BIDnet™ Copper and Fiber Pre-Terminated Assemblies
- Hubbell iSTATION Audio/Video Connections
- Service Poles
- Pre-Wired Raceway
- Pre-Wired Work Boxes
- Wireless Sensors



## Energy Efficiency

By providing energy savings, ease of installation and the ability to reuse and reconfigure systems, Hubbell ensures maximum value and sustainability for today's hospital facilities.



- Occupancy and Daylight Sensors
- Wireless Sensors
- USB Receptacles



## Delivery

Delivery systems from Hubbell offer safe and effective routing, management, delivery, and protection of a wide range of power, data, and AV solutions.



- Hubbell SystemOne Floor Boxes and Fire-Rated Poke-Throughs
- Surface Raceway
- Wall, Trench and Floor Duct
- Flat Panel TV Boxes
- Pre-Wired Work Boxes
- Table Top Boxes
- Power Poles
- Wire Basket Tray



## Datacom

Hospitals are depended on for the reliability of their services, procedures and patient care. Hubbell devices ensure the reliability that hospitals and healthcare workers need for complete peace of mind.



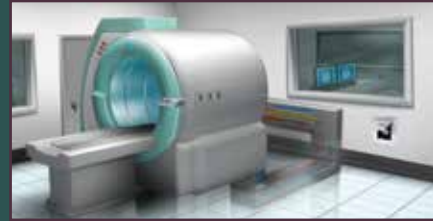
- Copper and Fiber Solutions
- Shielded Jacks
- Audio/Video Connections
- HDMI Extender
- Grounding and Bonding
- F-Type Connectors
- AV Plug and Play Systems
- Cable Management
- Remote Equipment Cabinets
- Racks and Enclosures



**Critical Care**



**Patient Care**



**Diagnostics**

**Table of Contents**

**2 Healthcare Solutions**  
A look at Safety, Installation Efficiency, Energy Efficiency, Delivery and Datacom in the Healthcare Environment

**6 Critical Care**  
Insulgrip<sup>®</sup> Plugs and Connectors  
Category 6A Jacks  
IFP Plates

**7 ICU Operating Rooms**  
HBL8300 Series Receptacles  
Stainless Steel Plates

**8 Patient Rooms**  
SNAPConnect<sup>®</sup> Receptacles and Switches  
Hubbell iSTATION Plates and Modules  
Ceiling Enclosure Box and HDMI  
110 Extenders

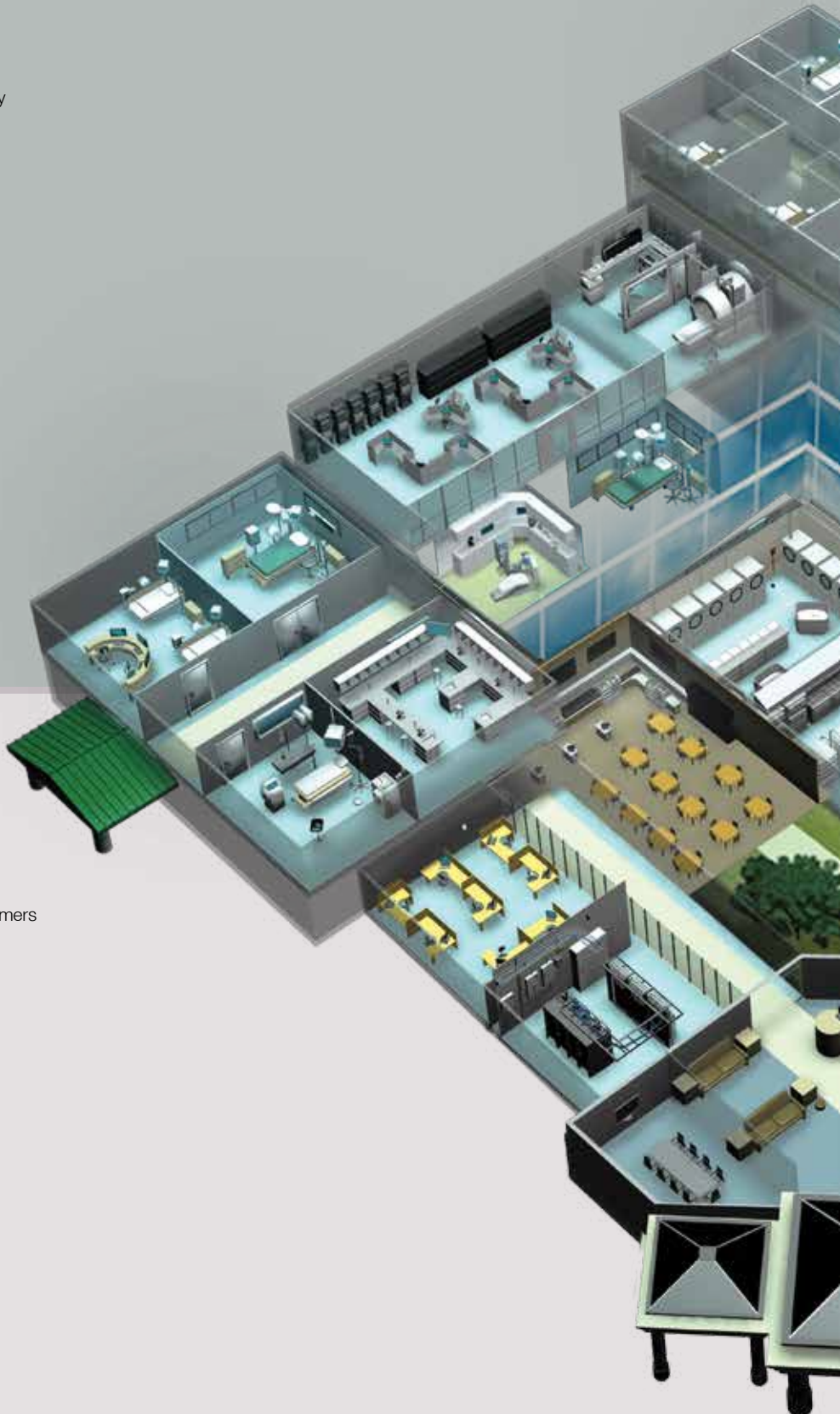
**10 Nurse's Station**  
Surge and Isolated Ground Receptacles  
Hospital Grade USB Charger Receptacles  
Category 6, 5e,3 and USOC Jacks

**11 Diagnostics**  
MRI Receptacles  
Mobile X-Ray Devices  
Shielded Jacks  
Patch Cords

**12 Examination Room**  
H-MOSS<sup>®</sup> Occupancy Wall Switches and Dimmers  
Hubbell-PRO Receptacles  
Secure-IT<sup>®</sup> Plates

**13 Physical Therapy Areas**  
Hubbell SystemOne  
Floor Boxes and Fire-Rated Poke-Throughs  
Snap Fit Connectors

**14 Auditorium and Conference Room**  
Hubbell SystemOne 6 and 8 Inch  
Fire-Rated Poke-Throughs  
Multimedia Connectivity Devices  
X-END Patch Cords





**Waiting Areas**



**Data Centers**



**Food Services**



**15 Administration**  
H-MOSS® Occupancy Ceiling Sensors  
Pre-Wired Work Surface Boxes  
Hubbell iSTATION Furniture Plates  
Patch Cords

**16 Common Areas**  
Tamper-Resistant Hospital Grade Receptacles  
USB Charger Receptacle  
Wireless Access Box  
AV Wall Enclosure

**17 Restrooms**  
Hospital Grade GFCI Receptacles  
H-MOSS® Ultrasonic Occupancy Sensors  
Wireless Sensors

**18 Data Centers**  
XXL Organizers  
BIDnet  
H2 Series Network Cabinet,  
Patch Cords  
Fiber Rack Enclosures  
Fiber Trunk Assemblies  
Grounding and Bonding

**20 Laboratories**  
Aluminum Raceway  
UTP and FTP Cable  
Category 6A Shielded Jacks  
H-MOSS® Occupancy Ceiling Sensors

**21 Kitchen and Food Services**  
Watertight Safety-Shroud® Twist-Lock®  
Watertight Twist-Lock®  
HI-Impact® RJ45 Connectors  
REBOX® Remote Equipment Cabinet

**22 Maintenance and Engineering**  
Twist-Lock® Plugs, Connectors and Receptacles  
Stainless Steel and Non-Metallic Disconnects  
Industrial Cord Reels

**23 Outdoor Areas**  
Mechanical Interlocks,  
Hose and Cable Protection  
Electric Vehicle Charging Station  
H-MOSS®|MAXX™ Sensors

# Critical Care



## Emergency Power Circuits

Emergency systems that supply power in the event of an outage must be identified according to the National Electric Code (NEC®) Article 517.30(E). Hubbell offers receptacles and wall plates in a distinct color red and a selection of wall plates clearly marked "EMERGENCY" to meet this requirement.



Critical care spaces in a healthcare facility require 100% reliable power and data connections without interruptions. These demanding 24/7 environments encounter significant abuse such as abrupt plug removal and numerous insertions, being impacted with carts, beds and gurneys, exposure to harsh cleaning disinfectants—all of which can contribute to damage.

Hubbell products are put through comprehensive rigorous UL, CSA, TIA, IEEE and ETL testing, to meet requirements above and beyond the standards providing the industry with one of the highest performing most reliable devices.

## Insulgrip® Hospital Grade Plugs and Connectors

- Ribbed nylon housing is impact and chemical resistant
- Powerful cord grip prevents conductor slippage and strain on terminals
- Integral VARI-SIZE® insert adjusts to a wide range of cord sizes



Rating	NEMA	Poles/Wires	Description	Black/White	Transparent	Valise (White)
15A 125V	5-15	2-Pole	Plug	<b>HBL8215C</b>	<b>HBL8215CT</b>	<b>HBL8115V</b>
		3-Wire	Angled Plug Connector	— <b>HBL8219C</b>	<b>HBL8215CAT</b> <b>HBL8219CT</b>	— <b>HBL8119V</b>
20A 125V	5-20	2-Pole	Plug	<b>HBL8315C</b>	<b>HBL8315CT</b>	<b>HBL8364V</b>
		3-Wire	Angled Plug Connector	— <b>HBL8319C</b>	<b>HBL8315CAT</b> <b>HBL8319CT</b>	— —

NEC® is a registered trademark of the National Fire Protection Association (NFPA).



## TIA Healthcare Standard TIA-1179

Area: **Critical Care**  
Communication recommendations for outlet densities

Area	Workstation	LAN Connections
ICU	High Station	>14 in each WA
Neonatal ICU	High Station	>14 in each WA
Recovery	High Station	>14 in each WA

## NEXTSPEED® Ascent Category 6A Jacks

- TIA and ISO category 6A component compliance
- Labor savings: exclusive 1-punch termination reduces termination time by 75%
- Mating cycles exceed industry standard by two times



Description	Color	Catalog Number	Color	Catalog Number	Color	Catalog Number
1 per Bag/ Carton of 25, Add suffix "25" for delivery of 25 per Bag/ Carton of 1	Almond	<b>HJ6AAL</b>	Gray	<b>HJ6AGY</b>	Red	<b>HJ6AR</b>
	Black	<b>HJ6ABK</b>	Green	<b>HJ6AGN</b>	Telco Ivory	<b>HJ6ATI</b>
	Blue	<b>HJ6AB</b>	Office White	<b>HJ6AOW</b>	White	<b>HJ6AW</b>
	Electric Ivory	<b>HJ6AEI</b>	Orange	<b>HJ6AOR</b>	Yellow	<b>HJ6AY</b>
	Gold	<b>HJ6AGL</b>	Purple	<b>HJ6AP</b>		

## IFP Faceplates

- Fits all Hubbell keystone connections (AV, data and fiber)
- Secure; must remove plate to access connectivity



Description	Color	1-Port	2-Port	3-Port	4-Port	6-Port
Single Gang	Black	<b>IFP11BK</b>	<b>IFP12BK</b>	<b>IFP13BK</b>	<b>IFP14BK</b>	<b>IFP16BK</b>
	Electric Ivory	<b>IFP11EI</b>	<b>IFP12EI</b>	<b>IFP13EI</b>	<b>IFP14EI</b>	<b>IFP16EI</b>
	Gray	<b>IFP11GY</b>	<b>IFP12GY</b>	<b>IFP13GY</b>	<b>IFP14GY</b>	<b>IFP16GY</b>
	Office White	<b>IFP11OW</b>	<b>IFP12OW</b>	<b>IFP13OW</b>	<b>IFP14OW</b>	<b>IFP16OW</b>
	White	<b>IFP11W</b>	<b>IFP12W</b>	<b>IFP13W</b>	<b>IFP14W</b>	<b>IFP16W</b>
Two Gang	Black	<b>IFP26BK</b>	<b>IFP29BK</b>	<b>IFP212BK</b>		
	Electric Ivory	<b>IFP26EI</b>	<b>IFP29EI</b>	<b>IFP212EI</b>		
	Gray	<b>IFP26GY</b>	<b>IFP29GY</b>	<b>IFP212GY</b>		
	Office White	<b>IFP26OW</b>	<b>IFP29OW</b>	<b>IFP212OW</b>		
	White	<b>IFP26W</b>	<b>IFP29W</b>	<b>IFP212W</b>		

Note: Office White = Light Almond.

# ICU and Operating Rooms

Like critical care areas, the ICU and operating rooms in a healthcare facility require 100% reliable connections that support highly advanced electronic equipment, like monitoring devices, portable imaging equipment, and various networking connections—all of which require safe, reliable power, and extended bandwidth to ensure uninterrupted performance.

## HBL8200 Series Hospital Grade Receptacles

- Exclusive nickel-plated bypass power contact design
- Four-point grounding system provides redundant grounding
- Deep body design and one-piece nickel plated brass ground strap



Rating	NEMA	Color	Duplex	Illuminated	Single	Power Indicating Tamper-Resistant
15A 125V		Brown	<b>HBL8200</b>	—	<b>HBL8210</b>	<b>8200LTRA</b>
		Gray	<b>HBL8200GY</b>	<b>HBL8200ILGY</b>	<b>HBL8210GY</b>	<b>8200GYLTRA</b>
		Ivory	<b>HBL8200I</b>	<b>HBL8200ILI</b>	<b>HBL8210I</b>	<b>8200IVLTRA</b>
		Light Almond	<b>HBL8200LA</b>	—	—	<b>8200LALTRA</b>
		Red	<b>HBL8200R</b>	<b>HBL8200ILR</b>	<b>HBL8210R</b>	<b>8200REDLTRA</b>
		White	<b>HBL8200W</b>	<b>HBL8200ILW</b>	<b>HBL8210W</b>	<b>8200WLTRA</b>
20A 125V		Brown	<b>HBL8300</b>	—	<b>HBL8310</b>	<b>8300LTRA</b>
		Gray	<b>HBL8300GY</b>	<b>HBL8300ILGY</b>	<b>HBL8310GY</b>	<b>8300GYLTRA</b>
		Ivory	<b>HBL8300I</b>	<b>HBL8300ILI</b>	<b>HBL8310I</b>	<b>8300IVLTRA</b>
		Light Almond	<b>HBL8300LA</b>	—	—	<b>8300LALTRA</b>
		Red	<b>HBL8300R</b>	<b>HBL8300ILR</b>	<b>HBL8310R</b>	<b>8300REDLTRA</b>
		White	<b>HBL8300W</b>	<b>HBL8300ILW</b>	<b>HBL8310W</b>	<b>8300WLTRA</b>



### Tamper-Resistant Receptacles

Compliant with NEC® 406.12 and NEC® 517-18(c), SNAPConnect® Tamper-Resistant Receptacles are acceptable for use in residential dwellings and pediatric locations.



### Receptacles with LED Power Indicators

Used most often to identify emergency circuits in hospitals, the two LED power indicators, bright enough to be visible in low light and bright daylight conditions, identify devices with power.



## SSF Stainless Steel Plates

- Superior corrosion resistance
- Designed to fit Hubbell iSTATION modules and AV connectors
- Ease of use: front and rear-loading capabilities improves tamper resistance



Description	Ports	Catalog Number	With Label Field
Single Gang	1	<b>SSF11</b>	<b>SSFL11</b>
	2	<b>SSF12</b>	<b>SSFL12</b>
	3	<b>SSF13</b>	<b>SSFL13</b>
	4	<b>SSF14</b>	<b>SSFL14</b>
	6	<b>SSF16</b>	<b>SSFL16</b>
Two Gang	4	<b>SSF204</b>	<b>SSFL204</b>
	6	<b>SSF206</b>	<b>SSFL206</b>
	9	<b>SSF209</b>	<b>SSFL209</b>
	12	<b>SSF212</b>	<b>SSFL212</b>



All SSF plates will accept AV keystone connectors and XCELERATOR jacks.



### TIA Healthcare Standard TIA-1179 Area: Surgery/Procedure/Operating Rooms

Communication recommendations for outlet densities

Area	Workstation	LAN Connections
Operating Room	High Station	>14 in each WA
ICU	High Station	>14 in each WA



**SNAPConnect®**  
Pigtailed Connector

**Audible SNAP**

- Indicates solid connection
- Secure, easy grip latch

**Inspection of power contacts**

- Clear terminal housing
- No exposed metal

**No Special Tester Required**

- .085 inch keyhole accepts the probe points found on the most common voltage testers and digital multi-meters



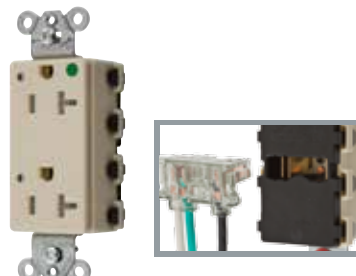
**Installation Efficiency**

SNAPConnect® devices maximize installation efficiency in commercial, institutional and healthcare applications where specialty devices are required by the NEC. SNAPConnect Tamper Resistant (TR), Isolated Ground (IG), LED Power Indicating, and Surge Suppressing Duplex Receptacles are available with Standard and Decorator faces, 15 and 20A, and in Specification or Hospital Grade. Combination TR/IG, TR/LED, or TR/IG with LED are perfect to identify Emergency Circuits.

To assist healthcare facilities get spaces up and running faster or facilitating moves, adds and changes, Hubbell's SNAPConnect® receptacles and iSTATION work area solutions save significant termination time while providing a fast and consistent installation every time.

## SNAPConnect® Receptacles, GFCIs and Switches

- Fast, easy installation with SNAPConnect® modular terminal instead of pigtails
- Clear terminal housing with no exposed live parts
- Compact size with a clean finished look



### Extra Heavy Duty Hospital Grade Receptacles with Power Indicating LED

Rating	NEMA	Color	Duplex Standard	Tamper-Resistant	Style Line® Decorator Standard	Tamper-Resistant
15A 125V		Ivory	<b>SNAP8200IL</b>	<b>SNAP8200ILTRA</b>	<b>SNAP2172IL</b>	<b>SNAP2172ILTRA</b>
		Red	<b>SNAP8200RL</b>	<b>SNAP8200RLTRA</b>	<b>SNAP2172RL</b>	<b>SNAP2172RLTRA</b>
		White	<b>SNAP8200WL</b>	<b>SNAP8200WLTRA</b>	<b>SNAP2172WL</b>	<b>SNAP2172WLTRA</b>
20A 125V		Ivory	<b>SNAP8300IL</b>	<b>SNAP8300ILTRA</b>	<b>SNAP2182IL</b>	<b>SNAP2182ILTRA</b>
		Red	<b>SNAP8300RL</b>	<b>SNAP8300RLTRA</b>	<b>SNAP2182RL</b>	<b>SNAP2182RLTRA</b>
		White	<b>SNAP8300WL</b>	<b>SNAP8300WLTRA</b>	<b>SNAP2182WL</b>	<b>SNAP2182WLTRA</b>



### Extra Heavy Duty Hospital Grade Receptacles

Rating	NEMA	Color	Duplex Standard	Tamper-Resistant	Style Line® Decorator Standard	Tamper-Resistant
15A 125V		Ivory	<b>SNAP8200INA</b>	<b>SNAP8200ITRA</b>	<b>SNAP2172INA</b>	<b>SNAP2172ITRA</b>
		Red	<b>SNAP8200RNA</b>	<b>SNAP8200RTRA</b>	<b>SNAP2172RNA</b>	<b>SNAP2172RTRA</b>
		White	<b>SNAP8200WNA</b>	<b>SNAP8200WTRA</b>	<b>SNAP2172WNA</b>	<b>SNAP2172WTRA</b>
20A 125V		Ivory	<b>SNAP8300INA</b>	<b>SNAP8300ITRA</b>	<b>SNAP2182INA</b>	<b>SNAP2182ITRA</b>
		Red	<b>SNAP8300RNA</b>	<b>SNAP8300RTRA</b>	<b>SNAP2182RNA</b>	<b>SNAP2182RTRA</b>
		White	<b>SNAP8300WNA</b>	<b>SNAP8300WTRA</b>	<b>SNAP2182WNA</b>	<b>SNAP2182WTRA</b>



### Heavy Duty Hospital Grade GFCI Receptacles

Rating	NEMA	Color	Standard	Tamper/Weather Resistant
15A 125V		Ivory	<b>GFRST82SNAPI</b>	<b>GFTWRST82SNAPI</b>
		Light Almond	<b>GFRST82SNAPLA</b>	<b>GFTWRST82SNAPLA</b>
		White	<b>GFRST82SNAPW</b>	<b>GFTWRST82SNAPW</b>
20A 125V		Ivory	<b>GFRST83SNAPI</b>	<b>GFTWRST83SNAPI</b>
		Light Almond	<b>GFRST83SNAPLA</b>	<b>GFTWRST83SNAPLA</b>
		White	<b>GFRST83SNAPW</b>	<b>GFTWRST83SNAPW</b>



### Right Angle Pigtailed Connector, 600V

Description	Wire Type	Assembled in USA
Clear right angle terminal with 6 inch leads #12 AWG	Solid	<b>SNAP1RNA</b>
THHN/THWN-2; Polycarbonate housing material	Stranded	<b>SNAP2RNA</b>



### Specification Grade Toggle and Style Line® Switches and PigTailed Connector

Rating	Color	Toggle Series		Illuminated Toggle	Single Pole
		Single Pole	Three Way		
15A, 120-277V AC	Ivory	<b>SNAP1201INA</b>	<b>SNAP1203INA</b>	15A, Blue LED Light ON with load OFF	<b>SNAP2101ILINA</b>
	Red	<b>SNAP1201RNA</b>	<b>SNAP1203RNA</b>		<b>SNAP2101ILRNA</b>
	White	<b>SNAP1201WNA</b>	<b>SNAP1203WNA</b>		<b>SNAP2101ILWNA</b>
20A, 120-277V AC	Ivory	<b>SNAP1221INA</b>	<b>SNAP1223INA</b>	20A, Blue LED Light ON with load OFF	<b>SNAP2121INA</b>
	Red	<b>SNAP1221RNA</b>	<b>SNAP1223RNA</b>		<b>SNAP2121RNA</b>
	White	<b>SNAP1221WNA</b>	<b>SNAP1223WNA</b>		<b>SNAP2121WNA</b>
Description	Wire Type	Single Pole (3 Wires)	Single Pole with Pilot		
Clear right angle terminal with 6 inch leads; #12 AWG	Solid	<b>SNAPSP1NA</b>	<b>SNAPSP1NA</b>		
THHN/THWN-2; Polycarbonate housing material	Stranded	<b>SNAPSP2NA</b>	<b>SNAPSP2NA</b>		



Many of these products are Assembled in USA, as indicated, and many are Buy American Compliant. Please contact Hubbell with any certification requirements.





# Patient Rooms

Modern patient rooms are filled with many electronic devices that require various styles of Audio/ Video, Data, PoE and power connections. While the reliability of monitoring care equipment is the primary concern, functionality, safety and aesthetics are also needed.

## Hubbell iSTATION Plates and Modules

- High density capabilities
- Pre-terminated X-END assemblies eliminate field termination on job site
- Supports multiple applications and connector configurations



### Hubbell iSTATION Modular Face Plate Frames and Stainless Steel Plates

Description	Gang	Catalog Number	Description	Gang	Catalog Number
Front loading frame	1	<b>IMF1xx</b>	Front loading frame;	1	<b>IMS1</b>
	2	<b>IMF2xx</b>	stainless steel	2	<b>IMS2</b>
				3	<b>IMS3</b>
				4	<b>IMS4</b>

The IMF/IMS series accept any modules in 3 unit combinations for 1-gang; and 6 unit combinations for 2-gang applications. For color choices, replace **xx** with **AL** (Almond), **BK** (Black), **GY** (Gray), **I** (Ivory), **LA** (Light Almond) or **W** (White).

### Hubbell iSTATION Unloaded Modules



Description	Catalog Number
Keystone; 1-port; 1 unit	<b>IM1K1xx</b>
Keystone; 2-port; 1 unit	<b>IM2K1xx</b>
SC Angled; (1) duplex; 1.5 unit	<b>IM1SCA15xx</b>
SC Angled; (2) duplex; 2 unit	<b>IM2SCA2xx</b>

### Hubbell iSTATION Modules Blank 15-pin/9-pin HDMI



Description	Catalog Number
HD15/9-pin or HDMI; 1 unit with 3.5mm Stereo Jack; 1.5 unit with 3.5mm SJ+AV Conn; 2 unit	<b>IMBDS1xx</b> <b>IMBDSA15xx</b> <b>IMB153X2xx</b>

For color choices, replace **xx** with **AL** (Almond), **BK** (Black), **GY** (Gray), **I** (Ivory), **LA** (Light Almond) or **W** (White).

## Hubbell HDMI Extenders

- Locating a display device up to 147 feet away is as simple as pulling two additional UTP cables to a drop
- Terminate with Category 5e, 6 or 6A UTP plenum or non-plenum cable
- Kit includes a "Source" and "Display" frame/module and a 5 volt DC power supply



### HDMI High-Definition 110 UTP Video Extender

Description	DC	Installation	Color	Decorator	Module - 2U
110 UTP HDMI extender (pair)	5 Volt	(2) 4-pair UTP cables	Black	<b>ISFH110BK</b>	<b>IMH110ST2BK</b>
			Electric Ivory	<b>ISFH110EI</b>	<b>IMH110ST2EI</b>
			Gray	<b>ISFH110GY</b>	<b>IMH110ST2GY</b>
			Office White	<b>ISFH110OW</b>	<b>IMH110ST2OW</b>
			White	<b>ISFH110W</b>	<b>IMH110ST2W</b>

## AV In-Wall Enclosure (FPTV)

- Deep face design delivers increased impact resistance
- Wire leads for fast installation and no exposed metal
- ID marking surface provides quick sure circuit identification



Description	Catalog Number
2-Gang In-Wall Enclosure, White	<b>NSAV62M</b>
4-Gang In-Wall Enclosure, White	<b>NSAV124M</b>
Steel Cover for NSAV6, White	<b>NSAV6C</b>
Steel Cover for NSAV12, White	<b>NSAV12C</b>

Description	Catalog Number
Standard Power Kit, White	<b>NSOKP</b>
Surge Protected Power Kit, Blue	<b>NSOKPS</b>



### The Digital Age

Patient rooms require more Data and AV connections than ever before. Everything from video distribution, specialty equipment connections to wireless access points and multiple LAN connections are being integrated into these spaces. This also ensures healthcare workers have immediate access to electronic health records and the most effective means of communicating.



### TIA Healthcare Standard TIA-1179 Area: Patient Rooms

Communication recommendations for outlet densities

Area	Workstation	LAN Connections
Patient Room	High Station	>14 in each WA

# Nurse's Station



## USB Charger Duplex Receptacles

- Deliver faster charging options
- Provides convenient USB and electrical power in a standard single gang electrical opening
- The device's two USB ports offer 3.8 amps 5V DC rating, and are capable of charging two tablets simultaneously
- An LED indicator lets users know when USB power is available to charge devices
- Hubbell's charger receptacles are energy efficient, going to "sleep mode" when not in use

Nurse's stations are the command center for each patient care area within a healthcare facility. Here it is crucial to maintain accurate and timely records, pharmacy requests, wireless nurse call systems and intra-hospital communication. This requires the highest level of network connectivity and power reliability.

## Surge Protection and Isolated Ground Hospital Grade Devices

### Isolated Ground


- Isolates ground contacts from the mounting strap
- Green grounding screw connected directly to grounding contacts

### Surge Protection


- Green LED indicates power is "ON" and device is actively protecting against voltage surges



### Surge Protection Receptacles, 20A 125V

Color	SNAPConnect®* Tamper-Resistant 	Duplex	Isolated Ground
Blue	<b>SNAP8362S</b>	<b>HBL8362SA</b>	<b>IG8362SA</b>
Gray	<b>SNAP8362GYS</b>	<b>HBL8362GYS</b>	<b>IG8362GYS</b>
Red	<b>SNAP8362RS</b>	<b>HBL8362RSA</b>	<b>IG8362RSA</b>
White	<b>SNAP8362WS</b>	<b>HBL8362WSA</b>	<b>IG8362WSA</b>

### Isolated Ground Receptacles, 20A 125V

Color	SNAPConnect®* Tamper-Resistant 	Duplex
Red	<b>SNAP8300RIGTRA</b>	<b>IG8300R</b>
Orange	<b>SNAP8300IGTRA</b>	<b>IG8300</b>

Note: \*See page 8 for SNAPConnect® pigtail connectors.

## Hospital Grade USB Charger Receptacle

- Two USB ports 3.8 Amp, 5V DC, Type A, 2.0
- Tamper-Resistant (TR) decorator duplex
- Green LED indicator to show USB power available



Rating	Color	Catalog Number	Color	Catalog Number
20A 125V	Black	<b>USB8300BK</b>	Light Almond	<b>USB8300LA</b>
	Brown	<b>USB8300</b>	Red	<b>USB8300R</b>
	Gray	<b>USB8300GY</b>	White	<b>USB8300W</b>
	Ivory	<b>USB8300I</b>		



## TIA Healthcare Standard TIA-1179

### Area: Nurse Station

Communication recommendations for outlet densities

Area	Workstation	LAN Connections
Nurses Stations	High Station	>14 in each WA
Registration	Med. Station	6-14 in each WA

## NEXTSPEED® and SPEEDGAIN® Category 6, 5e and USOC Jacks

- Verified Category 6 component compliant jack
- One punch termination reduces termination time by 75%
- Mating cycles exceed industry standards by two times



Color	Category 6	Category 5e	6-Position USOC
Black	<b>HXJ6BK</b>	<b>HXJ5EBK</b>	<b>HXJUBK</b>
Blue	<b>HXJ6B</b>	<b>HXJ5EB</b>	<b>HXJUB</b>
Electric Ivory	<b>HXJ6EI</b>	<b>HXJ5EEI</b>	<b>HXJUEI</b>
Green	<b>HXJ6GN</b>	<b>HXJ5EGN</b>	<b>HXJUGN</b>
Orange	<b>HXJ6OR</b>	<b>HXJ5EOR</b>	<b>HXJUOR</b>
Office White	<b>HXJ6OW</b>	<b>HXJ5EOW</b>	<b>HXJUOW</b>
Red	<b>HXJ6R</b>	<b>HXJ5ER</b>	<b>HXJUR</b>
White	<b>HXJ6W</b>	<b>HXJ5EW</b>	<b>HXJUW</b>
Yellow	<b>HXJ6Y</b>	<b>HXJ5EY</b>	<b>HXJUJY</b>
Other colors	<b>HXJ6xx</b>	<b>HXJ5Exx</b>	<b>HXJUxx</b>

For additional colors, replace xx with: **AL** (Almond), **GL** (Gold), **GY** (Gray), **LA** (Light Almond), **P** (Purple) and **TI** (Telco Ivory).

Many of these products are Assembled in USA, as indicated, and many are Buy American Compliant. Please contact Hubbell with any certification requirements.

# Diagnostics

With Hubbell's Hospital Grade MRI Duplex Receptacle, a completely non-magnetic receptacle design is available for Magnetic Imaging areas within hospitals. Hubbellock® Mobile X-Ray Devices include the plugs and receptacles needed to safely and reliably connect and disconnect X-Ray machines.

## MRI Hospital Grade Receptacles

- Exclusive nickel-plated bypass power contact design
- Complete non-magnetic construction
- Deep body design and one-piece nickel plated brass ground strap



Description	Color	15A 125V	20A 125V
MRI receptacle, flush, thermoplastic polyester face, back and side wired	Ivory	<b>HBL8200IMRI</b>	<b>HBL8300IMRI</b>
	Light Almond	<b>HBL8200LAMRI</b>	<b>HBL8300LAMRI</b>
	Red	<b>HBL8200RMRI</b>	<b>HBL8300RMRI</b>
	White	<b>HBL8200WMRI</b>	<b>HBL8300WMRI</b>



### Wall/Ceiling Duct System

The Hubbell Wall/Ceiling Duct System is utilized in combination with Hubbell's Trench Duct product offering for the enclosure of wiring to X-Ray machines or MRI equipment. Hubbell's aluminum wall duct is used for applications that require non ferrous metal raceways. Wall Duct is available in flush mount and surface mount versions.

## Mobile X-Ray Plugs and Receptacles

- Stainless steel construction
- Ergonomic design
- Spring load safety shutter

Description	50A 250V AC	60A 250V AC
Receptacle with stainless steel plate assembly	<b>HBL25505</b>	<b>HBL25605</b>
Receptacle with cast aluminum plate assembly	<b>HBL25503</b>	<b>HBL25603</b>
Replacement receptacle interior	-	<b>IN16494</b>
Plug with epoxy kit, less cord clamp	<b>HBL25515</b>	<b>HBL25615</b>
Plug with cord clamp, less epoxy kit	<b>HBL25525</b>	<b>HBL25625</b>



## NEXTSPEED® Category 6A Shielded Jacks

- Quick lacing termination cap
- Tool-less termination
- Die-cast housing



Description	Single Pack	24-Pack
Category 6A shielded jacks	<b>SJ6A</b>	<b>SJ6A24</b>

## NEXTSPEED® Shielded Category 6A Patch Cords

- Reliable with additional protection against ANEXT and other external noise sources
- Third-party tested and verified for category 6A component



Color	3 ft.	5 ft.	7 ft.	10 ft.	15 ft.	20 ft.	25 ft.
Black	<b>PC6ABK03</b>	<b>PC6ABK05</b>	<b>PC6ABK07</b>	<b>PC6ABK10</b>	<b>PC6ABK15</b>	<b>PC6ABK20</b>	<b>PC6ABK25</b>
Blue	<b>PC6AB03</b>	<b>PC6AB05</b>	<b>PC6AB07</b>	<b>PC6AB10</b>	<b>PC6AB15</b>	<b>PC6AB20</b>	<b>PC6AB25</b>
Gray	<b>PC6AGY03</b>	<b>PC6AGY05</b>	<b>PC6AGY07</b>	<b>PC6AGY10</b>	<b>PC6AGY15</b>	<b>PC6AGY20</b>	<b>PC6AGY25</b>
Yellow	<b>PC6AY03</b>	<b>PC6AY05</b>	<b>PC6AY07</b>	<b>PC6AY10</b>	<b>PC6AY15</b>	<b>PC6AY20</b>	<b>PC6AY25</b>



### TIA Healthcare Standard TIA-1179

Area: **Diagnostic and Treatment**  
Communication recommendations for outlet densities

Area	Workstation	LAN Connections
MRI & CT Scanner	High Station	>14 in each WA
Simulator Room	High Station	>14 in each WA
Linear Accelerator	High Station	>14 in each WA

# Examination Rooms



### Dual Technology

Hubbell H-MOSS® Occupancy Sensors are available with dual technology, that uses both passive infrared and ultrasonic sensing technology. Because both technologies are used to detect occupancy, these sensors minimize the risk of false triggering and provide the best performing sensor for most applications.

### ASHRAE 90.1-2010

Each enclosed space must have automatic lighting control this is either manual-ON (vacancy) operation or auto-ON (occupancy) to 50% of lighting power or less. Lighting must be automatically turned OFF within 30 minutes. Control must also be provided for occupant to select two levels of illumination 30-70% and 100%.



### TIA Healthcare Standard TIA-1179

Area: **Examination Rooms**  
Communication recommendations for outlet densities

Area	Workstation	LAN Connections
Procedure Room	Med. Station	6-14 in each WA
Observation Room	High Station	>14 in each WA
Evaluation Room	Med. Station	6-14 in each WA

Hospitals' and healthcare facilities' examination rooms have a need for safe, reliable power connections and lighting. Pediatric exam rooms require tamper-resistant receptacles. The ample lighting needed in exam rooms are often left ON when doctors and patients leave the exam room, wasting significant energy. By simply outfitting these spaces with occupancy sensors, the lights will turn OFF when the room is vacant, providing immediate energy savings.

## H-MOSS® Occupancy Wall Switch Sensors

- No neutral required for fast switch replacement
- Optional Hubbell patented adaptive technology eliminates manual adjustments
- No minimum load requirements



Description	Color	Single Circuit One Button	Dual Circuit Two Buttons
Adaptive Technology, Dual (Ultrasonic and Passive Infrared) wall switch with one or two buttons for manual/auto control, 1,000 sq. ft.	Ivory White	<b>AD20001</b> <b>AD2000W1</b>	<b>AD2000I2</b> <b>AD2000W2</b>
Description	Color	Standard	with Nightlight
Passive Infrared wall switch, 1,200 sq. ft.; manual adjusting; selectable manual/auto-ON operation; dual-voltage 120/277V; 3-way capable	Ivory White	<b>WS2000I</b> <b>WS2000W</b>	<b>WS2000NI</b> <b>WS2000NW</b>
Description	Color	Catalog Number	
Dimming sensor	Ivory White	<b>APD2000I</b> <b>APD2000W</b>	

## Hubbell-PRO Tamper-Resistant Receptacles with Power Indicating LEDs

- Combination Tamper Resistant and Power Indicating LEDs for pediatric circuits
- Circuit identification marking area
- Triple wire contacts and automatic self grounding staple



Description	Color	15A 125V AC	20A 125V AC
Hubbell-PRO Tamper-Resistant Receptacles with Power Indicating LED	Ivory	<b>8200IVLTRA</b>	<b>8300IVLTRA</b>
	Gray	<b>8200GYLTRA</b>	<b>8300GYLTRA</b>
	White	<b>8200WLTRA</b>	<b>8300WLTRA</b>
	Red	<b>8200REDLTRA</b>	<b>8300REDLTRA</b>

## Secure-IT™ Plates

- The tamper-resistant sliding cover
- Multiple labeling options
- Fiber and multimedia capabilities



Description	Size	Color	Face Plate	Replacement Cover	Cable-Through Plate
Tamper-Resistant Face Plates	1-gang/4-port	Black	<b>TPF1BK</b>	<b>TPFCLBK</b>	<b>TPCP1BK</b>
	1-gang/4-port	Gray	<b>TPF1GY</b>	<b>TPFCLGY</b>	<b>TPCP1GY</b>
	1-gang/4-port	Office White	<b>TPF1OW</b>	<b>TPFCLOW</b>	<b>TPCP1OW</b>
	1-gang/4-port	White	<b>TPF1WH</b>	<b>TPFCLWH</b>	<b>TPCP1WH</b>

Description	Size	Color	Face Plate	Replacement Cover
Weatherproof Face Plates	1-gang/4-port	Gray	<b>TWPF1GY</b>	<b>ERFCLGY</b>

# Physical Therapy Areas

Physical therapy centers and spaces provide a variety of treatment options to help patients develop, maintain and restore movement and function. Hubbell has delivery system products including non-metallic multi-service floor boxes that delivers power, datacom and AV to any point in the room.

## Hubbell SystemOne Floor Boxes and Fire-Rated Poke-Throughs

- Multi-service, multimedia and 4x4 applications
- Sub-plates accommodate various power and data configurations
- Covers are available in black, gray, brass, aluminum and ivory powder coat finishes



### Floor Boxes

Description	Catalog No.
Cast Iron	<b>S1CFB</b>
Steel	<b>S1SFB</b>
Steel AV	<b>S1SFBVA</b>
Non-Metallic	<b>S1PFB</b>

### Fire-Rated Poke-Throughs

Description	Factory Assembled Units*	Through Floor Fittings
(4) 20A; (4) keystone	<b>S1PT4X4xx</b>	<b>S1PT4X4FIT</b>
Dual Style Line	<b>S1PTxx</b>	<b>S1PTFIT</b>
Modular AV	<b>S1PT3IMxx</b>	<b>S1PTAVFIT</b>
Furniture Feed	<b>S1PTFFxx</b>	—

### Covers

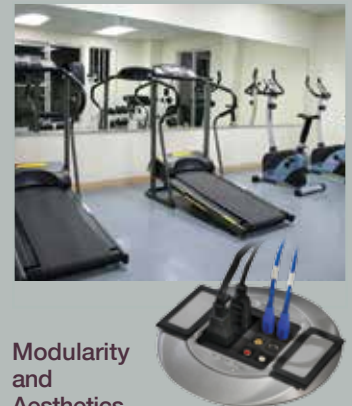
Description	Type	Catalog No.
Cast aluminum	Carpet	<b>S1CFCxx</b>
Covers	Tile	<b>S1TFCxx</b>

\* Includes through floor fitting, cover and subplate.  
For finish options, replace xx: **AL** (Aluminum Finish), **BRS** (Brass Finish), **BL** (Black) or **GY** (Gray).

### Sub-Plates

Description	Description	Description
Style Line® Decorator/GFCI for power and/or datacom applications	Duplex/Duplex for power and/or datacom applications <b>S1SP</b>	Duplex/Style Line® Decorator for power and/or datacom applications <b>S1SPDU</b>
(4) 20A and (4) keystone openings. Power can be wired as single or two circuit and isolated ground	Single Receptacle Opening for 20A-30A Twist-Lock® recep. (1.56" OD) and (2) Keystone openings <b>S1SP4X4</b>	Hubbell AV + Power (1) 20A 125V receptacle and 3 unit recessed iSTATION opening for data <b>S1SP3IM</b>

For full offering of SystemOne sub-plates and accessories, please visit our online catalog at [hubbell-wiring.com](http://hubbell-wiring.com).



### Modularity and Aesthetics

SystemOne is a unique, in-floor delivery system that can be installed in either floor boxes or fire-rated poke-throughs. The system uses a modular approach with over twenty sub-plates that allow various voice, data and AV connector configurations to fit into each. They can be customized to meet virtually every power and communications application and are easily replaced to accommodate future technology expansion.

## Snap Fit Connectors

- Superior performance and signal integrity
- Easily housed in all Hubbell work station and delivery products



### F-Type Connectors

Color	F-Connector, Gold, 3 GHz, Pass-Through, F/F Coupler	F-Connector, Gold, Pass-Through, F/F Coupler	F-Connector, Gold, Recessed, Pass-Through, F/F Coupler	RCA to F-Connector, Gold, Pass-Through, F/F Coupler
Black	<b>SFF3GBK</b>	<b>SFFGBK</b>	<b>SFGRFBK</b>	<b>SFRFGBK</b>
Office White	<b>SFF3GOW</b>	<b>SFFGOW</b>	<b>SFGRFOW</b>	<b>SFRFGOW</b>
White	<b>SFF3GW</b>	<b>SFFGW</b>	<b>SFGRFW</b>	<b>SFRFGW</b>



### 3.5mm Stereo Jacks

Color	3.5mm to Solder	3.5mm to Screw Terminal	3.5mm to Pass-Through, F/F Coupler	3.5mm to Pass-Through, Gold, F/F Coupler	3.5mm 110 Termination
Black	<b>SF35SJBK</b>	<b>SF35STBK</b>	<b>SF35FFBK</b>	<b>SF35GFFBK</b>	<b>SF35110BK</b>
Office White	<b>SF35SJOW</b>	<b>SF35STOW</b>	<b>SF35FFOW</b>	<b>SF35GFFOW</b>	—
White	<b>SF35SJW</b>	<b>SF35STW</b>	<b>SF35FFW</b>	<b>SF35GFFW</b>	—



### ISF Series Outlet Frames and Wallplates

Hubbell's nylon plates are virtually unbreakable and UL Listed for power and low-voltage with label fields. The NS61 Series frames are available 1, 2, 3, 4 and 6-port configurations, as well as various colors and connector configurations.



# Auditorium and Conference Rooms



## SystemOne Cover Finishes

SystemOne Recessed FRPT is available in five architectural finishes of brushed brass plated, satin nickel plated, antique bronze plated, brushed aluminum and black powder coat.

The cast aluminum covers feature a low profile design with a thickness of 0.150" which meets ADA requirements.



Large healthcare facilities include auditoriums and conference rooms where medical seminars, continuing education and meetings are held. To better facilitate these meetings, auditoriums and conference rooms must also accommodate the latest AV technology that include display devices, sound systems, video conferencing and more.

## Hubbell SystemOne Six and Eight Inch Recessed Fire-Rated Poke-Throughs

- Recessed connections
- Flush, durable low profile cover in brushed brass plated, satin nickel plated, antique bronze plated, brushed aluminum and black powder coat
- Large variety of subplates to accommodate various power and data configurations



### 6-Inch Fire-Rated Poke-Throughs

Description	Catalog Number
Pre-Wired FRPT for Data/AV includes: (2) pre-wired 20A receptacles with 18" leads plus two decorator openings including 2" EMT and 3/4" EMT, (1) flange and cover assembly	<b>S1R6PTWZxxx</b>
FRPT for Furniture Feed Applications (1) 2" EMT, (1) 3/4" EMT, (1) flange and cover assembly	<b>S1R6PTFFxxx</b>
Through floor fitting including 2" EMT and 3/4" EMT	<b>S1R6PTFIT</b>

### 8-Inch Fire-Rated Poke-Throughs

Description	Catalog Number
Pre-Wired FRPT for Data/AV includes: (4) pre-wired 20A receptacles with 18" leads plus 3-gangs with 2" EMT for data and AV, (1) flange and cover assembly	<b>S1R8PTZZ3xxx</b>
Pre-Wired FRPT for Power includes: (4) pre-wired 20A receptacles with 18" leads plus 2-gangs with 2" EMT and 1" EMT (1) flange and cover assembly	<b>S1R8PTZZ2xxx</b>
Through floor fitting including 2" EMT for data and AV	<b>S1R8PTFIT3</b>

For finish options, replace xxx: **ALU** (Brushed Aluminum), **BLK** (Black Powder Coat), **BRS** (Brushed Brass Plated), **BRZ** (Antique Bronze Plated) and **NKL** (Satin Nickel Plated).



## TIA Healthcare Standard TIA-1179

### Area: Operations

Communication recommendations for outlet densities

Area	Workstation	LAN Connections
Conference Room	Med. Station	6-14 in each VA

## Hubbell Multimedia Connectivity

- Provides for higher capacity application connector count in a smaller footprint
- 110 termination reduces installation time
- Transmit over one or two UTP cables



### USB 2.0 Full Speed 110 Extenders, 100 ft.

Description	1-Unit Module
Black	<b>IMU1101BK</b>
Electric Ivory	<b>IMU1101EI</b>
Gray	<b>IMU1101GY</b>
Office White	<b>IMU1101OW</b>
White	<b>IMU1101W</b>

### VGA and 3.5mm HD AV Extender, 75 ft.

Color	1.5-Unit Module
Black	<b>IM15311015BK</b>
Electric Ivory	<b>IM15311015EI</b>
Gray	<b>IM15311015GY</b>
Office White	<b>IM15311015OW</b>
White	<b>IM15311015W</b>

### HDBaseT HDMI USB, IR and RS232, 330 ft.

Color	3-Unit Style Line®	3-Unit Module
Black	<b>ISFHDBT3BK</b>	<b>IMHDBT3BK</b>
Electric Ivory	<b>ISFHDBT3EI</b>	<b>IMHDBT3EI</b>
Gray	<b>ISFHDBT3GY</b>	<b>IMHDBT3GY</b>
Office White	<b>ISFHDBT3OW</b>	<b>IMHDBT3OW</b>
White	<b>ISFHDBT3W</b>	<b>IMHDBT3W</b>

### HDBaseT HDMI USB, IR and RS232, 330 ft.

Color	3-Unit Style Line®	3-Unit Module
Black	<b>ISFHDBT3BK</b>	<b>IMHDBT3BK</b>
Electric Ivory	<b>ISFHDBT3EI</b>	<b>IMHDBT3EI</b>
Gray	<b>ISFHDBT3GY</b>	<b>IMHDBT3GY</b>
Office White	<b>ISFHDBT3OW</b>	<b>IMHDBT3OW</b>
White	<b>ISFHDBT3W</b>	<b>IMHDBT3W</b>

### 110 Audio/Video Modules, 100 ft.

Color	1.5-Unit RCA Component Video, Left/Right Audio	1.5-Unit RCA Component Video, 3.5mm Audio	1-Unit, RCA Component Video, HD	1-Unit, RCA Left/Right Audio
Black	<b>IMCAR11015BK</b>	<b>IMC3511015BK</b>	<b>IMCR1101BK</b>	<b>IMAR1101BK</b>
Electric Ivory	<b>IMCAR11015EI</b>	<b>IMC3511015EI</b>	<b>IMCR1101EI</b>	<b>IMAR1101EI</b>
Gray	<b>IMCAR11015GY</b>	<b>IMC3511015GY</b>	<b>IMCR1101GY</b>	<b>IMAR1101GY</b>
Office White	<b>IMCAR11015OW</b>	<b>IMC3511015OW</b>	<b>IMCR1101OW</b>	<b>IMAR1101OW</b>
White	<b>IMCAR11015W</b>	<b>IMC3511015W</b>	<b>IMCR1101W</b>	<b>IMAR1101W</b>

# Administration

Perfect for areas where lights are often inadvertently left ON, Hubbell H-MOSS® Adaptive Technology Ceiling Sensors use microprocessor-based technology that monitors the controlled area and automatically adjusts the sensitivity and timer based on environmental history.

## Adaptive Dual Technology Ceiling Sensors

- ATD sensors' superior sensing motion combines excellent minor motion detection of ultrasonic with the long range major motion of passive infrared
- Adaptive technology - "Install and Forget" - features all digital, automatic sensing technology
- CPR version feature photocell for daylight harvesting and relay to interface with auxilliary systems such as HVAC



Description	Coverage	Color	Photocell and Isolated Relay*	Sensor Only
Adaptive Dual Technology ceiling sensors	2000 sq. ft.	White	<b>ATD2000CRP</b>	<b>ATD2000C</b>
	1000 sq. ft.	White	<b>ATD1000CRP</b>	<b>ATD1000C</b>
	500 sq. ft.	White	<b>ATD500CRP</b>	<b>ATD500C</b>
Control Unit; 120/277V AC, 50/60 Hz; for use with ceiling sensors				<b>CU300A</b>

\*CPR Version version feature photocell for daylight harvesting and relay to interface with auxilliary systems such as HVAC.

## Pre-Wired Work Surface Boxes

- Convenient and attractive method for work surface power and data connections
- When not in use, services are concealed by flipping the unit down



### Pre-Wired Work Surface Boxes

Description	Color	Catalog Number
Square Lift-Up Style	Black	<b>WSBC21UBK</b>
	Silver	<b>WSBC21USV</b>
Square Mini Lift-Up Style	Black	<b>WSBA11BK</b>
	Stainless Steel	<b>WSBA11BSS</b>
Square Mini Lift-Up Style	Black	<b>WSBA2BK</b>
	Stainless Steel	<b>WSBA2BSS</b>

### 2x2 USB Work Surface Boxes

Description	Catalog Number
Brushed Aluminum	<b>WSBUSB2X2ALU</b>
Black Powder Coat	<b>WSBUSB2X2BLK</b>



## Hubbell Surge Protective Devices (SPD)

A good-better-best approach to surge protection levels allows customers to choose the proper protection level for their application.



Surge strips are available in various models from strips with USB ports, energy savings surge strips to specialty applications requiring telephone line, CATV and satellite protection.

15 and 20 Amp, specification and hospital grade, Hubbell's surge receptacle offering include 4-Plex, standard duplex and SNAPConnect® versions.

## Hubbell iSTATION Furniture Plates

- Integrate seamlessly with a variety of office furniture systems
- Made of durable high-impact thermoplastic housing with openings to fit any keystone data jack and adequate labeling space for easy identification



### Furniture Plates

(Steelcase®, Haworth®, HON®, Knoll®, etc.)

Opening size: 2.71" x 1.38"	Color	2-Port	4-Port	4-Port Inline
Black		<b>FP2BK</b>	<b>FP4BK</b>	<b>FP4BBK</b>
		<b>FP2GY</b>	<b>FP4GY</b>	<b>FP4BGY</b>

### Furniture Reducing Adapter Plate

(Herman Miller®)

Opening size: 2.982" x 1.882"	Color	Catalog Number
Black		<b>HMRBBK</b>
		<b>HMRBGY</b>

## Patch Cords

- Snagless design
- Cat 6A sled technology improves crosstalk



### NEXTSPEED® Ascent Category 6A Patch Cords

Color	3 ft.	5 ft.	7 ft.	10 ft.	15 ft.	20 ft.	25 ft.
Black	<b>HC6ABK03</b>	<b>HC6ABK05</b>	<b>HC6ABK07</b>	<b>HC6ABK10</b>	<b>HC6ABK15</b>	<b>HC6ABK20</b>	<b>HC6ABK25</b>
Blue	<b>HC6AB03</b>	<b>HC6AB05</b>	<b>HC6AB07</b>	<b>HC6AB10</b>	<b>HC6AB15</b>	<b>HC6AB20</b>	<b>HC6AB25</b>
Green	<b>HC6AGN03</b>	<b>HC6AGN05</b>	<b>HC6AGN07</b>	<b>HC6AGN10</b>	<b>HC6AGN15</b>	<b>HC6AGN20</b>	<b>HC6AGN25</b>
Yellow	<b>HC6AY03</b>	<b>HC6AY05</b>	<b>HC6AY07</b>	<b>HC6AY10</b>	<b>HC6AY15</b>	<b>HC6AY20</b>	<b>HC6AY25</b>

Steelcase® is a registered trademark of Steelcase, Inc. Haworth® is a registered trademark of Haworth, Inc. HON® is a registered trademark of The HON Company. Knoll® is a registered trademark of Knoll, Inc. Herman Miller® is a registered trademark of Herman Miller, Inc.



## TIA Healthcare Standard TIA-1179

Area: **Operations**  
Communication recommendations for outlet densities

Area	Workstation	LAN Connections
Administration	Med. Station	6-14 in each WA
General Office	Low Station	2-6 in each WA

# Common Areas



## Tamper-Resistant

The NEC® Article 517-18 (c) requires the use of tamper-resistant receptacles in common areas where children are present, as well as all pediatric areas. Hubbell offers the industry's best-in-class hospital grade tamper-resistant receptacle along with a line of GFCI and specification grade devices that include tamper resistant shutters designed for common areas. Hubbell tamper-resistant receptacles restrict access of single-pronged items like paper clips, pens or keys.



## Tamper-Resistant Hospital Grade Receptacles

- Deep face design delivers increased impact resistance
- Wire leads for fast installation and no exposed metal
- Integral ID marking surface



Description	Rating	Color	Catalog Number
HBL Extra Heavy Duty Tamper-Resistant Receptacles	15A 125V	Black	<b>HBL8200SGIA</b>
		Gray	<b>HBL8200SGRA</b>
		Ivory	<b>HBL8200SGWA</b>
20A 125V Receptacles	20A 125V	Black	<b>HBL8300SGIA</b>
		Gray	<b>HBL8300SGRA</b>
		Ivory	<b>HBL8300SGWA</b>

Description	Rating	Color	Catalog Number
Hubbell-PRO Tamper-Resistant Receptacles	15A 125V	Black	<b>8200IVTRA</b>
		Gray	<b>8200REDTRA</b>
		Ivory	<b>8200WTRA</b>
20A 125V Receptacles	20A 125V	Black	<b>8300IVTRA</b>
		Gray	<b>8300REDTRA</b>
		Ivory	<b>8300WTRA</b>

## USB Charging Receptacle and 4 Port Outlet Charger

- Green LED indicator to show USB power available
- Four USB ports 5 Amp, 5V DC, Type A, class 2.0



### 20A 125V USB Charging Receptacle

Description	Color	Catalog Number
Two USB ports 3.8 Amp, 5V DC, Type A, class 2.0 Tamper-Resistant Style Line® decorator duplex	Black	<b>USB20X2BK</b>
	Brown	<b>USB20X2</b>
	Gray	<b>USB20X2GY</b>
	Ivory	<b>USB20X2I</b>
	Lt. Almond	<b>USB20X2LA</b>
	Red	<b>USB20X2R</b>
	White	<b>USB20X2W</b>

### USB Charger 4 Port Outlet

Description	Color	Catalog Number
Four USB Type A, class 2.0 ports, 5 Amp, 5 Volt DC, Style Line® decorator	Brown	<b>USB4</b>
	Black	<b>USB4BK</b>
	Gray	<b>USB4GY</b>
	Ivory	<b>USB4I</b>
	Lt. Almond	<b>USB4LA</b>
	White	<b>USB4W</b>



**TIA Healthcare Standard TIA-1179 Area: Diagnostic and Treatment**  
Communication recommendations for outlet densities

Area	Workstation	LAN Connections
Family Lounge	Low Station	2 – 6 in each WA
Waiting Room	Low Station	2 – 6 in each WA
Consultation	Low Station	2 – 6 in each WA

## Wireless Access Point Ceiling Box

- Locked and secure for remote locations
- Flexible mounting options
- Ceiling and wall mount enclosures optimize space



Description	Mounting Plate (H x W)	External Dimensions (H x W x D)	Door Weight Capacity	Total Capacity	Cable Entry	Catalog Number
Universal WAP enclosure	9.7" x 5.25"	4" x 10" x 12.7"	15 lb.	20 lb.	6.5" x 1.2"	<b>WBC1</b>
Cisco® Aironet® 1200 series		10" x 10.5" x 13.2"	15 lb.	20 lb.	6.5" x 1.2"	<b>WBC12</b>

## AV Ceiling Enclosure

- Manage multiple applications inside one enclosure
- Flush mounted, white enclosure
- Loaded with two Hubbell 20A duplex receptacles and a 2-gang back box



Description	Rating	Catalog Number
Wireless Access Point Ceiling Box	Non-Plenum	<b>AVCE1</b>
White enclosure 24"x12"x 8", (2) 20 amp duplex receptacles and 2-gang back box	Plenum Rated	<b>AVCE1P</b>
Data Kit		<b>AVCE1KIT</b>



# Restrooms

With a restroom in every patient room and throughout staff and public areas, hospitals and healthcare facilities can contain hundreds of restrooms. Required by code, receptacles in any wet area must be a ground fault circuit interrupter. Many healthcare restrooms require hospital grade GFCIs while others can use commercial-grade GFCIs.

## Hospital Grade GFCI Tamper-Resistant Weather Resistant Receptacles

- Ground fault indicator flashes red when device has lost capability to provide protection
- Test button functionally tests both electronic components and trip mechanism
- No power at device face if reverse wired



Rating	NEMA	Color	Standard	Assembled in USA	Isolated Ground	SNAPConnect® GFCI*
15A 125V		Ivory	<b>GFTWRST82I</b>	<b>GFTWRST82IU</b>	<b>GFTWRST82IIG</b>	<b>GFTWRST82SNAPI</b>
		Red	<b>GFTWRST82R</b>	<b>GFTWRST82RU</b>	<b>GFTWRST82RIG</b>	<b>GFTWRST82SNAPR</b>
		White	<b>GFTWRST82W</b>	<b>GFTWRST82WU</b>	<b>GFTWRST82WIG</b>	<b>GFTWRST82SNAPW</b>
20A 125V		Ivory	<b>GFTWRST83I</b>	<b>GFTWRST83IU</b>	<b>GFTWRST83IIG</b>	<b>GFTWRST83SNAPI</b>
		Red	<b>GFTWRST83R</b>	<b>GFTWRST83RU</b>	<b>GFTWRST83RIG</b>	<b>GFTWRST83SNAPR</b>
		White	<b>GFTWRST83W</b>	<b>GFTWRST83WU</b>	<b>GFTWRST83WIG</b>	<b>GFTWRST83SNAPW</b>
Description		Wire Type	General Use	Assembled in USA		
SNAPConnect® Right Angle Pigtailed Connector - 600V		Solid	<b>SNAP1RA</b>	<b>SNAP1RNA</b>		
Clear right angle terminal with 6 inch leads #12 AWG		Stranded	<b>SNAP2RA</b>	<b>SNAP2RNA</b>		
THHN/THWN-2; polycarbonate housing material						

\* SNAPConnect GFCI must use a SNAPConnect Pigtailed connector.

## Ultrasonic Adaptive Technology Occupancy Sensors

- Provides superior minor motion sensitivity, even in stalls
- Automatically adjusts sensor settings for optimum performance
- Use optional isolated relay to integrate with building automation and HVAC systems



### Ceiling Sensor

Description	Color	Catalog Number
Ceiling sensor, 2000 sq. ft.	White	<b>ATU2000C</b>
Control unit; 120/277V AC, 50/60 Hz, for use with ceiling sensors	Black	<b>CU300A</b>

### Wall Switch

Description	Color	Catalog Number
Wall switch without button, 400 sq. ft.	Ivory White	<b>AU200011N</b> <b>AU2000W1N</b>

## Wireless Sensors

- Eliminates need to run extra wires
- Supports highly reconfigured spaces
- Helps manage energy consumption



Description	Color	Catalog Number
Ceiling mount 360° - 324-676 ft²	White	<b>WLP450C</b>
Wall mount 180° - 3000 ft²	White	<b>WLP3000W</b>
Corner mount 90° - 2500 ft²	White	<b>WLP2500W</b>

Description	Color	Catalog Number
8A Lighting, 3A Fan (1/10 HP motor, 120V only), Spec. Grade Electronic Switch 120-277V, No Neutral Wire Required	Ivory White	<b>WLS1278I</b> <b>WLS1278W</b>

Description	Color	Catalog Number
Wireless load control unit with isolated relay	White	<b>WLC316R</b>

Compatible Transmitters: WLP series and WLDH sensors or any Lutron Clear Connect Enabled Sensor.



Clear Connect, is a registered trademark of Lutron Electronics Co., Inc.



### GFCI Safety Code

The combination of GFCI protection and tamper-resistant safety provides an ideal “one-stop” Hubbell solution. Hubbell tamper-resistant GFCI devices also include a weather resistant rating per NEC® 406.9, providing UV and corrosion resistance for harsh, damp applications.

While GFCIs protect people in bathrooms, scrub rooms, kitchenettes and other potentially wet locations throughout healthcare facilities, they should not be used in critical care patient areas or for electrical life support equipment in ICUs and operating rooms because of the possibility of power interruption.



### Wireless Sensors

There are many retrofit applications where running the extra wiring for traditional occupancy sensors is difficult or impossible. This is where Hubbell’s WL-Series Wireless Controls shine by eliminating sensor wiring. Deploy Hubbell’s popular wired controls where you can and then utilize WL-Series Controls in the areas that have hard ceilings, asbestos, or poor switch locations.

NEC® is a registered trademark of the National Fire Protection Association (NFPA).



# Data Centers



## Data Center Design

A properly designed infrastructure will maintain network up-time and security, provide operational efficiency, support future technology and sustain regulatory changes. Data Center Infrastructure Management (DCIM) is the integration of information technology and facility management disciplines to centralize monitoring, management and capacity planning of a data center's critical systems.

Infrastructure design decisions can affect long-term reliability and total cost of ownership. Designing simple features into the infrastructure will dramatically improve data center performance parameters such as: Air Flow, Response Time, Administration, Space Utilization, Security and Aesthetics.



## Cost Impact of Downtime

Studies show that losses from downtime can run into the millions of dollars. More than 50% of all data center infrastructure failures result from improper design, maintenance or administration activities<sup>(1)</sup>. The infrastructure must enable IT managers to deploy equipment, complete reconfigurations, and respond to maintenance issues as quickly as possible.

<sup>(1)</sup> "Site Uptime® Procedures and Guidelines for Safely Performing Work in an Active Data Center", CompuSite Engineering, Inc. and the Uptime Institute (2007).

Data centers are the very core of modern healthcare facilities, supporting all the applications needed to maintain daily communications, electronic health records, and critical storage and transmission of medical information. Data centers also must support all satellite operations within the healthcare network. Healthcare facilities need a data center solution that can address both power and data while supporting sustainability through energy savings, space efficiency, reliability and uptime.

## Standard Relay Racks

- Cabinets, racks and cable management for efficient cooling and space utilization
- Fiber and copper connections, assemblies, and patch panels

### Relay Racks and 4-Post Frames

Rack Units	Height	Width	Depth	Type	Rail	Catalog Number
45	84"	20"	3"	Relay Rack	#12-24 Threaded	<b>HPW84RR19</b>
45	84"	20"	6"	Relay Rack	#12-24 Threaded	<b>HPW84RR19D</b>
45	84"	20"	10"	Relay Rack	#12-24 Threaded	<b>HRR45U10</b>
45	84"	20"	16"	Relay Rack	#12-24 Threaded	<b>HRR45U16</b>
45	84"	20"	24"	4-Post Frame	M6 Cage Nut	<b>SF841924</b>
45	84"	20"	36"	4-Post Frame	M6 Cage Nut	<b>SF841936</b>



## BIDnet

- Hubbell BIDnet™ pre-terminated copper trunk assemblies are factory tested and terminated for maximum performance and reduced installation time



All BIDnet pre-terminated cable assemblies are made-to-order items. Please call out inside sales team at (800) 626-0005 for lead-time and availability. Jack to Open, Jack to Jack and Jack to Plug

## Full Size Network and Server Cabinets

- Large open base for cable entry and exit
- Perforated front and rear doors provide enhanced airflow
- 180 degree door swing provides complete equipment access



### H2 Series Full Size Cabinets

Rack Units	Height	Depth	Width	Type	Rail	Catalog Number
45	84"	30"	32"	Network	#12-24 Threaded	<b>H2N8432</b>
45	84"	30"	36"	Network	#12-24 Threaded	<b>H2N8436</b>
45	84"	30"	42"	Network	#12-24 Threaded	<b>H2N8042</b>
45	84"	30"	48"	Network	#12-24 Threaded	<b>H2N8048</b>
43	80"	24"	42"	Server	M6 Cage Nut	<b>H2S8042</b>
45	84"	24"	42"	Server	M6 Cage Nut	<b>H2S8442</b>
45	84"	24"	48"	Server	M6 Cage Nut	<b>H2S8448</b>



## Patch Cords

- Snagless design
- Ascent sled technology improves crosstalk providing increased performance



Length	Category 6A		Category 6		Category 5e	
	Black	Blue	Black	Blue	Black	Blue
1 ft.	<b>HC6ABK01</b>	<b>HC6AB01</b>	<b>HC6BK01</b>	<b>HC6B01</b>	<b>HC5EBK01</b>	<b>HC5EB01</b>
3 ft.	<b>HC6ABK03</b>	<b>HC6AB03</b>	<b>HC6BK03</b>	<b>HC6B03</b>	<b>HC5EBK03</b>	<b>HC5EB03</b>
5 ft.	<b>HC6ABK05</b>	<b>HC6AB05</b>	<b>HC6BK05</b>	<b>HC6B05</b>	<b>HC5EBK05</b>	<b>HC5EB05</b>
7 ft.	<b>HC6ABK07</b>	<b>HC6AB07</b>	<b>HC6BK07</b>	<b>HC6B07</b>	<b>HC5EBK07</b>	<b>HC5EB07</b>
10 ft.	<b>HC6ABK10</b>	<b>HC6AB10</b>	<b>HC6BK10</b>	<b>HC6B10</b>	<b>HC5EBK10</b>	<b>HC5EB10</b>
15 ft.	<b>HC6ABK15</b>	<b>HC6AB15</b>	<b>HC6BK15</b>	<b>HC6B15</b>	<b>HC5EBK15</b>	<b>HC5EB15</b>
20 ft.	<b>HC6ABK20</b>	<b>HC6AB20</b>	<b>HC6BK20</b>	<b>HC6B20</b>	<b>HC5EBK20</b>	<b>HC5EB20</b>
25 ft.	<b>HC6ABK25</b>	<b>HC6AB25</b>	<b>HC6BK25</b>	<b>HC6B25</b>	<b>HC5EBK25</b>	<b>HC5EB25</b>



# Data Centers

## Hubbell OptiChannel Rack Enclosures

- Rack mount enclosure enhance the management capabilities of high-density fiber optic connections at the interconnect or cross-connect
- Features a one-piece removable cover and magnetic door
- Integrate seamlessly with a wide range of panel and cassette options and are available in 1 to 4U sizes to house anywhere from 72 to 360 LC fiber ports



### Rack Mount Enclosures

Description	Rack Units	Dimensions Inches (mm)			Max LC Port Capacity	Color	Catalog Number
		Height	Width	Depth			
High Density 144 Port 1U Enclosures	1	1.75" (44)	19" (483)	17" (432)	144	Black	<b>FCRHD1UBK</b>
	1	1.75" (44)	19" (483)	17" (432)	144	Gray	<b>FCRHD1UGY</b>

Description	Rack Units	Dimensions Inches (mm)			FSP Panel Capacity	Splice Tray Capacity	Max LC Port Capacity	Catalog Number
		Height	Width	Depth				
Enhanced Rack Mounted Enclosures	1	1.75" (44)	17" (432)	17" (432)	3	2	72	<b>FCR1U3SP</b>
	2	3.5" (89)	17" (432)	17" (432)	6	6	144	<b>FCR2U6SP</b>
	3	5.25" (133)	17" (432)	17" (432)	12	12	288	<b>FCR3U12SP</b>
	4	7.00" (178)	17" (432)	17" (432)	15	16	360	<b>FCR4U15SP</b>

## BIDnet

- Hubbell BIDnet™ pre-terminated Fiber trunk assemblies are factory tested and terminated for maximum performance and reduced installation time



All BIDnet pre-terminated cable assemblies are made-to-order items. Please call out inside sales team at (800) 626-0005 for lead-time and availability. MTP Fiber Cords, Distribution Trunks and Pigtailed, Mesh Bundle Trunks, 40 Gb/s and 100 Gb/s MTP Fiber Cords, Transition Assemblies, and Distribution Fans-Out Trunks and Pigtailed

## Cable Management

- Single column design
- Installer configured rear options
- Hinged cover can be removed
- For flush mount, use HMx7x with VM vertical cable managers



### Vertical Cable Management

Description	6" Width	8" Width	10" Width	12" Width
Front Channel	<b>VM610</b>	<b>VM810</b>	<b>VM1010</b>	<b>VM1210</b>
Front Channel with Rear Access	<b>VM613</b>	<b>VM813</b>	<b>VM1013</b>	<b>VM1213</b>
Front Channel with Rear Cage	<b>VM618</b>	<b>VM818</b>	<b>VM1018</b>	<b>VM1218</b>
Front and Rear Channels	<b>VM620</b>	<b>VM820</b>	<b>VM1020</b>	<b>VM1220</b>

### Horizontal Cable Management

Rack Units	Cover	4" Front Depth	7" Front Depth	7" Front, 7" Rear
1	Included	<b>HM14C</b>	<b>HM17C</b>	<b>HM177C</b>
2	Included	<b>HM24C</b>	<b>HM27C</b>	<b>HM277C</b>
3	Included	<b>HM34C</b>	<b>HM37C</b>	<b>HM377C</b>
4	Included	<b>HM44C</b>	<b>HM47C</b>	<b>HM477C</b>



**Efficiency and Sustainability**  
Hubbell's iFRAME® cabinets and NEXTFRAME® cable management systems provide for maximum airflow and space utilization supporting efficiency and sustainability in the datacenter.



### Cable Management

The four series of Hubbell cable management products were designed to meet the varying capacity challenges in data centers and telecommunication rooms. From low capacity efficient models, to high capacity models with many options, Hubbell cable management products support all types of cable routing.

# Laboratories



### Ultimate Flexibility

Hubbell raceway accommodates the changing needs of research facilities, medical test labs and pharmacies. Raceway offers the ability to provide standard convenience receptacles and datacomm connections, as well as serve the power requirements of larger equipment. Receptacles or datacomm ports can also be easily added where needed.

### Hubbell Aluminum Pre-Wired Raceway

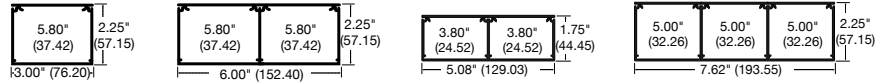


Save time and money, completing the job quicker and on schedule with Hubbell pre-wired raceway. Aluminum raceway resists oxidation, corrosion and fading and is available in single, dual and three channel with a wide selection of fittings and boxes.

Medical labs require an array of power, data and AV configurations and the means to deliver connection points precisely where needed. In this environment they can also be exposed to corrosive chemicals and materials. In addition, labs typically undergo reconfiguration to accommodate changing medical needs, testing and new equipment.

## Hubbell Aluminum Raceway

- Resists oxidation, corrosion and fading
- Available in single, dual and three channel with a wide selection of fittings and boxes



Description	HBLALU3800	HBLALU4800	HBLALU5000	HBLALU7620
Base 10ft	<b>HBLALU3800B10</b>	<b>HBLALU4800B10</b>	<b>HBLALU5000B10</b>	<b>HBLALU7620B10</b>
5 ft. cover 1 channel	<b>HBLALUC5</b>	<b>HBLALUC5</b>	<b>HBLALUC57</b>	<b>HBLALUC57</b>
5 ft. cover 2 channel	—	—	<b>HBLALU2C57</b>	<b>HBLALU2C57</b>
<b>Covers</b>				
Duplex	<b>HBLALUDR</b>	<b>HBLALUDR</b>	<b>HBLALU57DR</b>	<b>HBLALU57DR</b>
Rectangular	<b>HBLALUG</b>	<b>HBLALUG</b>	<b>HBLALU57G</b>	<b>HBLALU57G</b>
Toggle Switch	<b>HBLALUN</b>	<b>HBLALUN</b>	<b>HBLALU57N</b>	<b>HBLALU57N</b>
Hubbell iStation	<b>HBLALULPB*</b> <b>HBLALULPBA**</b>	<b>HBLALULPB*</b> <b>HBLALULPBA**</b>	<b>HBLALU57LPB**</b>	<b>HBLALU57LPB**</b>

\* Use KPIMBZGY KP Plate.  
\*\* Use IMF1GY or IFPxxGY Series Plates.

### Fittings

Internal Elbow	<b>HBLALU3817</b>	<b>HBLALU4817</b>	<b>HBLALU5017</b>	<b>HBLALU7617</b>
External Elbow	<b>HBLALU3818</b>	<b>HBLALU4818</b>	<b>HBLALU5018</b>	<b>HBLALU7618</b>
Tee	<b>HBLALU3815</b>	<b>HBLALU4815</b>	<b>HBLALU5015</b>	<b>HBLALU7615</b>
Cover Clip	<b>HBLALU3806</b>	<b>HBLALU4806</b>	<b>HBLALU5006</b>	<b>HBLALU7606</b>

For full offering of Raceways and fittings, please visit our online catalog at [hubbell-wiring.com](http://hubbell-wiring.com).

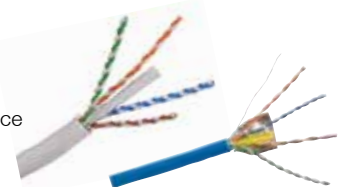


TIA Healthcare Standard TIA-1179 Area: **Diagnostic and Treatment**  
Communication recommendations for outlet densities

Area	Workstation	LAN Connections
Laboratory	High Station	>14 in each WA

## NEXTSPEED® UTP and FTP Cable

- Designed to operate as a high-performance balanced solution
- Supports the latest ratified industry standards for component compliance
- Typical round design allows for ease of installation



Description	Plenum Spool	Plenum REELEX	Riser Spool	Riser REELEX
UTP Cable, Cat. 6A, 4-Pair	<b>C6ASPxx</b>	<b>C6ASRxx</b>	<b>C6ASRxx</b>	—
10GbE FTP Cable, 4-Pair, 1000' length	<b>C6FTPSPxx*</b>	<b>C6FTPSRxx*</b>	<b>C6FTPSRxx*</b>	—
UTP Cable, Cat. 6 Enhanced, 4-Pair	<b>C6ESPxx</b>	<b>C6ESRxx</b>	<b>C6ESRxx</b>	—
UTP Cable, Cat. 6, 4-Pair	<b>C6SPxx</b>	<b>C6RPxx</b>	<b>C6SRxx</b>	<b>C6RRxx</b>
Link 6 UTP Cable	—	<b>C6RPEXX</b>	—	<b>C6RRExx</b>
Category 5E UTP Cable, 4-Pair	<b>C5EPSPxx</b>	<b>C5EPRPxx</b>	<b>C5EPSRxx</b>	<b>C5ERRxx</b>
UTP Cable, Category 5e, 4-Pair	<b>C5ESPxx</b>	<b>C5ERPxx</b>	<b>C5ESRxx</b>	<b>C5ERRxx</b>

For color replace xx with **B** (Blue), **GY** (Gray), **W** (White) and **Y** (Yellow).  
\*Not available in **Y** (yellow).

## NEXTSPEED® Ascent Category 6A Shielded Jacks

- Category 6A shielded jacks deliver the ultimate in external noise protection
- Supports power over Ethernet (PoE) and PoE+ applications
- Quick lacing termination cap
- Tool-less termination
- Die-cast housing



Description	Single Pack	24-Pack
Category 6A shielded jacks	<b>SJ6A</b>	<b>SJ6A24</b>

# Kitchen and Food Services

Hospital, rehabilitation, long term care and hospice facilities include kitchens and food service areas to feed patients, staff and visitors. These food preparation spaces have a wide variety of power requirements. They require modularity to move in various types of appliances as meals and menus change.

## Watertight Safety-Shroud® Twist-Lock®

- Maintains UL Type 4X watertight seal when in use and when disconnected with cover closed
- Recessed blades provide protection against bending and breaking
- Neoprene sealing gland and thermoplastic guard assure sealing when fully connected



## Watertight Twist-Lock®

- Double insulated elastomeric cover and thermoplastic body for extra safety and water resistance
- Cone Seal prevents water and debris from collecting at cable entrance
- Easy-clean body styling
- Closure cap seals out water and dirt when not in use



### Watertight Safety

Hubbell offers a variety of watertight electrical connections. Hubbell's Watertight Safety-Shroud® Twist-Lock® devices are another example of Hubbell innovation making devices better. The safety shroud prevents unintentional contact with plug blades as it is connected. Hubbell's pin and sleeve devices offer durable watertight housings and higher amperage configurations up to 200 amps. Hubbell watertight devices are available in straight blade and Twist-Lock® configurations.

NEMA Rating Color Coded by Voltage	Poles/ Wires	Watertight Safety-Shroud® Twist-Lock® Plug	Connector	Watertight Twist-Lock®	
				Plug	Connector
15A 125V	L5-15	2P/3W	—	—	<b>HBL24W47A</b> <b>HBL25W47A</b>
20A 125V	L5-20	2P/3W	<b>HBL2311SW</b>	<b>HBL2313SW</b>	<b>HBL26W47</b> <b>HBL27W47</b>
20A 250V	L6-20	2P/3W	<b>HBL2321SW</b>	<b>HBL2323SW</b>	<b>HBL26W48</b> <b>HBL27W48</b>
20A 3Ø 250V	L15-20	3P/4W	<b>HBL2421SW</b>	<b>HBL2423SW</b>	<b>HBL26W75</b> <b>HBL27W75</b>
30A 3Ø 250V AC	L15-30	3P/4W	<b>HBL2721SW</b>	<b>HBL2723SW</b>	<b>HBL28W75</b> <b>HBL29W75</b>

## HI-IMPACT RJ45 Connectors

- IP67 and IP66 rated for ingress protection against dust and liquids
- Durable, rugged construction for harsh environments
- Supports power over Ethernet (PoE and PoE+)



Description	Catalog Number
Category 6 Connector (UTP)	<b>HI6</b>
Protective Cap	<b>HIC</b>

Description	Catalog Number
Category 5e Connector	<b>HI5E</b>
Inline Coupler, Category 5e	<b>HI5EC</b>

## RE-BOX® Remote Equipment Cabinet

- Houses and protects a variety of active and passive network equipment
- Features a modular backboard system with equipment mounting brackets



Pre-Configured Version - Contents: base/rear section with welded 19" brackets for 2 hubs, front door with 2 locks (NSQ tool), a set of 19" extension brackets for 3 additional hubs (RE4xx only) and a set 19" bottom hinge brackets for patch panels

Switch Capacity	Max. Switch Depth	Height	Width	Depth	Color	Light Gray	Black
2U	14" (356)	32" (813)	24.2" (615)	7" (178)	Light gray	<b>RE2</b>	<b>RE2B</b>
5U	14" (356)	32" (813)	24.2" (615)	10" (254)	Light gray	<b>RE4</b>	<b>RE4B</b>
5U	22" (559)	42" (1067)	24.2" (615)	10" (254)	Light gray	<b>RE4X</b>	<b>RE4XB</b>



### TIA Healthcare Standard TIA-1179

#### Area: **Operations**

Communication recommendations for outlet densities

Area	Workstation	LAN Connections
Food Service	Med. Station	6–14 in each WA
Cafeteria	Low Station	2–6 in each WA
General Storage	Low Station	2–6 in each WA



### Motor Load Safety

The NEC® requires motor controllers on equipment like HVAC units and compactors to have a disconnect within line of sight (Article 430.102) and allows a controller and disconnect to be the same device (Article 430.109) combining both functions in one device.

Hubbell CIRCUIT-LOCK® devices save space, time and money. The dual rating means installing one device instead of two for reduced complexity and faster deployments to get up and running sooner.

NEC® is a registered trademark of the National Fire Protection Association (NFPA).  
Valox® is a registered trademark of SABIC Innovative Plastics acquired from GE.



### Certified by NSF

Hubbell's stainless steel disconnect switch has been certified by NSF International for hygiene applications in food and beverage processing. These switched enclosures are designed for harsh environments to withstand exposure to water, chemicals, oils and frequent wash-downs. They feature 304 Series Stainless Steel and are UL listed Type 4X and 12 with a high visibility red handle that can be locked in the "OFF" position for compliance with OSHA lockout/tagout regulations.

Every healthcare facility includes maintenance and plant areas that are similar to an industrial facility. Large equipment like back-up generators, compactors, loading dock equipment, HVAC units and air handlers all need high-capacity, safe and reliable power. Without it, an entire healthcare facility can shut down, compromising patient care.

## Twist-Lock® Plugs, Connectors and Receptacles

- Integral dusts shield protects wiring chamber from dust or contaminants
- Tough ribbed nylon housing provides a secure grip with impact and chemical resistance
- Two part cord grip tightens with two screws for maximum strain relief



NEMA Rating	Color Coded by Voltage	Poles/Wires	Plug	Connector	Receptacle	
15A	125V AC	L5-15	2P/3W	<b>HBL4720C</b>	<b>HBL4729C</b>	<b>HBL4710</b>
20A	125V AC	L5-20	2P/3W	<b>HBL2311</b>	<b>HBL2313</b>	<b>HBL2310</b>
20A	250V AC	L6-20	2P/3W	<b>HBL2321</b>	<b>HBL2323</b>	<b>HBL2320</b>
20A 3Ø	250V AC	L15-20	3P/4W	<b>HBL2421</b>	<b>HBL2423</b>	<b>HBL2420</b>
20A 3Ø	480V AC	L16-20	3P/4W	<b>HBL2431</b>	<b>HBL2433</b>	<b>HBL2430</b>
30A 3Ø	250V AC	L15-30	3P/4W	<b>HBL2721</b>	<b>HBL2723</b>	<b>HBL2720</b>
30A 3Ø	480V AC	L16-30	3P/4W	<b>HBL2731</b>	<b>HBL2733</b>	<b>HBL2730</b>

## Stainless Steel and Labelless Non-Metallic Disconnects

- UL listed as a manual motor controller and is "suitable as a motor disconnect"
- **NSF** Certified by NSF for hygiene in Food Processing applications



Description	Labelless Non-Metallic	Stainless Steel	Sloped Top
30A disconnect switch	<b>HBLDS3</b>	<b>HBLDS3SS</b>	<b>HBLDS3SSR</b>
30A disconnect switch with HBLAC1 auxiliary contact	<b>HBLDS3AC</b>	<b>HBLDS3SSAC</b>	<b>HBLDS3SSRAC</b>
60A disconnect switch	<b>HBLDS6</b>	<b>HBLDS6SS</b>	<b>HBLDS6SSR</b>
60A disconnect switch with HBLAC1 auxiliary contact	<b>HBLDS6AC</b>	<b>HBLDS6SSAC</b>	<b>HBLDS6SSRAC</b>
100A disconnect switch	<b>HBLDS10</b>	<b>HBLDS10SS</b>	<b>HBLDS10SSR</b>
100A disconnect switch with HBLAC1 auxiliary contact	<b>HBLDS10AC</b>	<b>HBLDS10SSAC</b>	<b>HBLDS10SSRAC</b>
Auxiliary contacts, "break after main break" 1 set of n/o and n/c contacts	<b>HBLAC1</b>	<b>HBLAC1</b>	<b>HBLAC1</b>
Auxiliary contacts, "break before main break" 1 set of n/o contacts	<b>HBLAC2</b>	<b>HBLAC2</b>	<b>HBLAC2</b>

## Industrial Power Cord Reels

- Available in 15 and 20A 125V with 45 Foot Length and #12/3 SJEO Cable Type



Cord End	NEMA Style	Amps	Weight Lbs. (kg)	Catalog Number
Without cord ends	5-15R	15	21 (9.5)	<b>HBL45123</b>
HBL5269C connector	5-15R	15	28 (12.7)	<b>HBL45123C</b>
HBL5369C connector	5-20R	20	28 (12.7)	<b>HBL45123C20</b>
HBL2313 connector	L5-20R	20	28 (12.7)	<b>HBL45123TL20</b>
Portable outlet box with (2) gray duplex receptacle	5-20R	20	29 (13.2)	<b>HBL45123R220</b>
Portable outlet box with (1) ground fault protected gray duplex receptacle	5-15R	15	29 (13.2)	<b>HBL45123GF15</b>
	5-20R	20	29 (13.2)	<b>HBL45123GF20</b>

# Outdoor Areas

From air handling equipment to ambulance bays, healthcare facilities have multiple outdoor areas that require power and cable protection. These spaces must maintain a high level of safety for patients, staff and visitors entering and exiting a healthcare facility.

## Mechanical Interlocks

- Interlock eliminates making or breaking the circuit under load for maximum safety
- Non-metallic Valox® housing meets UL50 Type 4X, 12X, and IP67 for harsh environments
- Incorporates a disconnect switch and receptacle in one compact economical unit



Rating	Color	Poles/ Mechanical	Mating Plug
Coded by Voltage	Wires	Interlock	
20A	120/240V	3P/4W	<b>HBL420MI12W</b> <b>HBL420P12W</b>
20A	3Ø 480V	3P/4W	<b>HBL420MI7W</b> <b>HBL420P7W</b>
30A	120/240V	3P/4W	<b>HBL430MI12W</b> <b>HBL430P12W</b>
30A	3Ø 480V	3P/4W	<b>HBL430MI7W</b> <b>HBL430P7W</b>
30A	3Ø 600V	3P/4W	<b>HBL430MI5W</b> <b>HBL430P5W</b>

Rating	Color	Poles/ Mechanical	Mating Plug
Coded by Voltage	Wires	Interlock	
60A	120/240V	3P/4W	<b>HBL460MI12W</b> <b>HBL460P12W</b>
60A	3Ø 480V	3P/4W	<b>HBL460MI7W</b> <b>HBL460P7W</b>
60A	3Ø 600V	3P/4W	<b>HBL460MI5W</b> <b>HBL460P5W</b>
100A	120/240V	3P/4W	<b>HBL4100MI12W</b> <b>HBL4100P12W</b>
100A	3Ø 480V	3P/4W	<b>HBL4100MI7W</b> <b>HBL4100P7W</b>

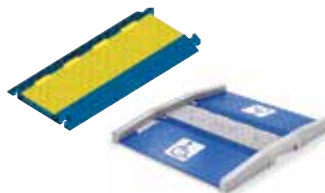


## Disaster Preparedness Areas

In recent years, disaster preparedness areas have expanded from coping with natural disasters to accidents involving hazardous materials and outside decontamination. Most facilities have developed systems and protocols that enable decontamination of people outside of the building, including outdoor decontamination showers. All of these outdoor areas must be safe and any outdoor equipment must have power that is both reliable and ready in the event of a disaster.

## Hose and Cable Protection

- AccessTrak®: expandable five channel system is a modular cable protection for compliance with ADA accessibility guidelines
- TredTrak®: five channel system for pedestrian and light vehicle traffic
- TrukTrak®: two, three and five channel system for heavy trucks and fork lifts



Description	TrukTrak Kit	TredTrak Kit	AccessTrak Kit
Five channel hose and cable protection system	<b>HBLTT5B</b>	<b>HBLTRED5B</b>	<b>HBLAT5KITA</b>

## H-MOSS®|MAXX™ OPTIMYZER® Sensors

- Watertight occupancy sensor is ideal for harsh environment
- IP65, NEMA 3R watertight and outdoor rated

### Watertight OPTIMYZER®

Description	Voltage	Catalog Number
Pir sensor, relay with photocell	120-347V AC	<b>HMHB21UPCW</b>
Pir sensor, 2 relays with photocell	120-347V AC	<b>HMHB22UPCW</b>
Pir sensor, 1 double pole relay with photocell	208, 240V AC	<b>HMHB23APCW</b>
Pir sensor, 1 double pole relay with photocell	480V AC	<b>HMHB23BPCW</b>



### Outdoor Rated Watertight Wall Mount PIR Sensor

Description	Voltage	Catalog Number
IP66, NEMA 4X, heavy duty wall or pendant mount sensor with -40°F to 149°F (-40°C to 65°C) operating PIR sensor, with isolated relay and photocell temperature range and 160° of coverage	24V DC	<b>AHP1600WRP</b>



### Extreme Temperature PIR Ceiling Sensor

Description	Voltage	Catalog Number
Upgraded ceiling sensor with -40°F to 149°F (-40°C to 65°C) operating temperature range PIR sensor, with isolated relay and photocell Use ACIPE to make NEMA 4X watertight	24V DC	<b>AHP1500CRP</b>
NEMA 4X enclosure		<b>ACIPE</b>
Heavy Duty Control Unit for use with AHP1500CRP ceiling sensors	120-277V AC	<b>CU300HD</b>



## H-MOSS®|MAXX™

H-MOSS®|MAXX™ products provide users with methods to reduce energy usage in harsh environments. These applications often have lights being left on and ventilation/HVAC systems constantly working. H-MOSS®|MAXX™ products are designed to withstand these challenging environments and provide increased operating efficiency.

# HUBBELL®

## Healthcare Application Guide

When Safety, Reliability and Performance Matter

### Healthcare eTour



This interactive, virtual tour of a healthcare facility takes visitors through a healthcare setting. As users navigate their way through the virtual hospital, the HealthcareTour demonstrates where and how Hubbell products can be deployed to offer safety, efficiency, performance and durability solutions in these spaces.

Visit [www.hubbell-wiring.com](http://www.hubbell-wiring.com) to take the tour.



Critical Care



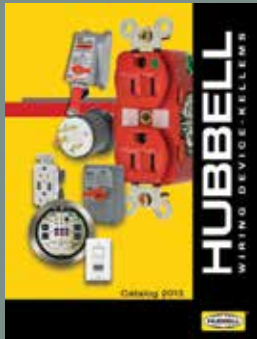
Operating Room



Product Page

### Available Literature

Hubbell offers an extensive literature library for product support. Downloadable PDFs are available on line.



Hubbell Wiring Device-Kellems Catalog



SNAPConnect® Devices



Integrating AV Systems



Hubbell Premise Wiring Catalog

**HUBBELL®**  
Wiring Systems

[www.hubbell-wiring.com](http://www.hubbell-wiring.com)  
[www.hubbell-premise.com](http://www.hubbell-premise.com)



Hubbell Wiring Device-Kellems  
Hubbell Incorporated (Delaware)  
40 Waterview Drive, Shelton, CT 06484  
Phone (800) 288-6000 • FAX (800) 255-1031

Hubbell Premise Wiring  
Hubbell Incorporated (Delaware)  
23 Clara Drive • Mystic, CT 06355  
Phone (800) 626-0005 • FAX (860) 535-8328