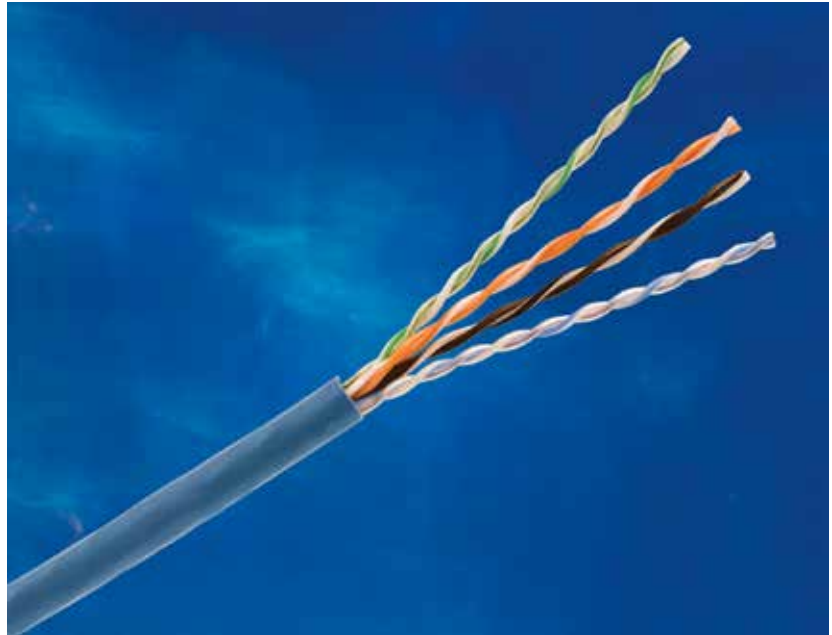




HUBBELL NEXTSPEED Link 6 Cable

Sweep Tested from 1 to 550MHz
 Guaranteed Headroom over TIA
 and ISO Category 6 Requirements
 Small O.D. Maximizes Conduit/
 Pathway Capacity and Air Flow
 Backward Compatible to
 Category 5e, 5 and 3



SPECIFICATIONS

- ◆ **Conductor:** 23 AWG solid bare copper
- ◆ **Insulation:** CMP: FEP, CMR: Polyolefin
- ◆ **Pairing**
 - 1: Blue + White/Blue
 - 2: Orange + White/Orange
 - 3: Green + White/Green
 - 4: Brown + White/Brown
- ◆ **Cabling:** Four unshielded twisted pairs cabled around a star filler member
- ◆ **Jacket**
 - CMP: Low-Smoke PVC
 - CMR: PVC
- ◆ **NVP**
 - CMP: 70%
 - CMR: 68%

Hubbell's **NEXTSPEED**® Link 6 cable provides considerable margin above all electrical transmission performance requirements specified in ANSI/TIA 568.2-D and ISO/IEC 11801 (Class E, 2nd edition) standards. Configure Hubbell Premise Wiring's component compliant, high-performance **NEXTSPEED**® connectivity (jacks, panels, cords, blocks) with **NEXTSPEED**® Link 6 cable and the result is a cabling solution which provides optimal electrical performance capabilities of handling critical, high-bandwidth applications.

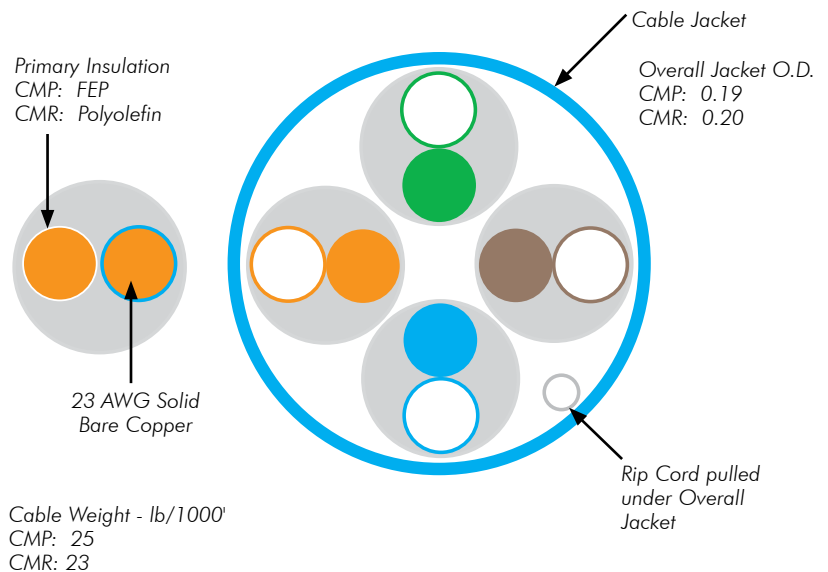
STANDARDS/VERIFICATIONS

- ANSI/TIA 568.2-D Category 6 component specifications
- IEEE 802.3af (PoE), IEEE 802.3at (PoE+), IEEE 802.3bt (4PPoE Type 3 and 4)
- UL Listed

CABLE FEATURES

APPLICATIONS

- ▲ Ethernet: 10/100/1000BASE-T, 10GBASE-T (55m)
- ▲ Data centers: Multi-Gigabit between devices
 - Server to server
 - Server to storage
 - Server to switch
- ▲ PoE applications
- ▲ Bandwidth intense processing:
 - High-resolution 3D modeling
 - Online document publishing
 - Real-time video to the desktop
 - Broadband video
 - Digital video



ORDERING INFORMATION

NEXTSPEED® Link 6 UTP Cable, 4-Pair

REELEX® Box; NVP: Plenum 70%, Riser 68%



Color	Plenum	Riser	Color	Plenum	Riser
Black	HC6RPEBK	HC6RREBK	Pink	HC6RPEPK	HC6RREPK
Blue	HC6RPEB	HC6RREB	Purple	HC6RPEP	HC6RREP
Gray	HC6RPEGY	HC6RREGY	Red	HC6RPER	HC6RRER
Green	HC6RPEGN	HC6RREGN	White	HC6RPEW	HC6RREW
Orange	HC6RPEOR	HC6RREOR	Yellow	HC6RPEY	HC6RREY

RELATED PRODUCTS

NEXTSPEED® Category 6 Jacks

Color	Single Pack	24-Pack
Black	HXJ6BK	HXJ6BK24
Blue	HXJ6B	HXJ6B24
Gold	-	HXJ6GL24
Gray	HXJ6GY	HXJ6GY24
Green	HXJ6GN	HXJ6GN24
Ivory	HXJ6EI	HXJ6EI24
Office White	HXJ6OW	HXJ6OW24
Orange	HXJ6OR	HXJ6OR24
Purple	-	HXJ6P24
Red	HXJ6R	HXJ6R24
White	HXJ6W	HXJ6W24
Yellow	HXJ6Y	HXJ6Y24

NEXTSPEED® Category 6 Patch Panels, 19"

Format	Color	24-Port	48-Port
Standard	Black	HP624	HP648
	White	HP624W	HP648W
Angled	Black	HP624A*	HP648A*



NEXTSPEED® Category 6 Patch Cords

	Catalog No.
Standard patch cord	HC6_{xx}yy
Low diameter patch cord	HCL6_{xx}yy



xx = Color: **BK** (Black), **B** (Blue), **GN** (Green), **GY** (Gray), **OR** (Orange), **P** (Purple), **R** (Red), **W** (White), and **Y** (Yellow);
yy = Standard Length: **01** (1'), **03** (3'), **05** (5'), **07** (7'), **10** (10'), **15** (15'), **20** (20'), **25** (25');
 Made-to-order lengths available from 30 to 100ft in 5ft increments.



TRANSMISSION SPECIFICATIONS, Worst Case

TIA/EIA-568-C.2 Category 6 Compliant; ISO/IEC 11801, 2nd Edition, Category 6 Compliant

Freq. (MHz)	Ins. loss (dB/100m)	NEXT (dB/100m)	PSNEXT (dB/100m)	ACR (dB)	PSACR (dB)	ELFEXT (dB)	PSELFEXT (dB)	Return loss (dB)
1	2.2	74.4	72.5	72.2	70.4	67.9	64.9	20.2
4	3.9	65.5	63.4	61.7	59.7	52.7	52.9	23.2
8	5.4	60.8	58.7	55.4	53.2	46.8	46.8	24.6
10	6.2	59.5	57.5	53.4	51.5	44.9	44.9	25.2
16	7.7	56.3	54.4	48.7	46.7	40.5	40.6	25.1
31.25	10.8	51.7	50.0	41.3	39.3	34.8	34.8	23.7
62.5	15.6	47.5	45.5	32.2	30.2	28.9	28.8	21.6
100	19.7	44.5	42.4	24.4	22.6	24.9	24.9	20.2
200	29.2	39.9	37.8	10.7	8.9	18.9	18.8	18.1
250	32.7	38.5	36.4	5.7	3.6	16.9	16.9	17.4
300*	36.5	37.0	35.3	-	-	15.2	15.4	16.9
350*	39.6	36.2	34.2	-	-	13.8	13.8	16.4
400*	43.1	36.5	33.5	-	-	12.9	12.9	15.8
500*	48.8	33.9	31.7	-	-	10.9	10.9	15.1
555*	52.2	33.2	31.2	-	-	9.8	10.0	14.8

*Frequencies beyond the TIA and ISO requirements are for information only.

REELEX is licensed and patented by Windings Inc.



hubbell.com/hubbellpremiwiring/en



Hubbell Premise Wiring • Hubbell Incorporated (Delaware) • 23 Clara Drive • Suite 103 • Mystic, CT 06355 • Phone (800) 626-0005 • FAX (860) 535-8328
 Printed in U.S.A. Specifications subject to change without notice.

® indicates registered trademark of Hubbell Incorporated.

PLDCA009REV 10/20