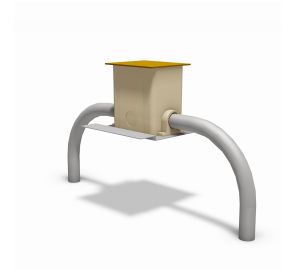


# REVIT CONTENT GUIDE

<b>Manufacturer:</b>	Wiremold
<b>File:</b>	Floor_Box-Modulink-Wiremold-880_Nonmetallic-1_Gang-Fire_Classified.rfa
<b>Type Catalog:</b>	Not Applicable
<b>Rendering file:</b>	Not Applicable
<b>Schedule file:</b>	Schedule - Floor_Box-Modulink-Wiremold-880_Nonmetallic-1_Gang-Fire_Classified.rvt



## Instance Properties

Construction	
Cover Plate 1*	Duplex, (2x) 1-1/2" Plugs, Brass
Flange*	Brass Carpet and Tile Flange, 817B
Electrical	
Apparent Load*	0.00 VA
Load Classification*	Other
Power Factor*	1.000000
Voltage*	0.00 V
Identity Data	
Equipment Number*	
Part Description*	One-Gang Modulink Multi-Service Rectangular Floor Box, Fire Classified
Part Number*	880MPFC

## Type Properties

The family contains the following 1 types:  
Standard (Values for this type are shown below)

Adsk Model Properties	
Box Capacity	1-Gang
Construction	
Installation Floor Type	Tile, Carpet, Wood
Installation Location*	On-Grade, Above-Grade
Dimension	
Depth*	6.750
Height*	6.000
Width*	4.125

Identity Data	
Copyright*	Copyright © Wiremold
Date Last Modified*	December 19, 2013
Description	One-Gang Modulink Multi-Service Rectangular Floor Box, Fire Classified
Equipment Abbreviation*	FB
Family Version*	1.0.0
Manufacturer	Wiremold
Model	880MPFC
Model Disclaimer*	Contact Wiremold for more information
Original Creation Date*	December 19, 2013
Product Documentation Link*	<a href="http://www.legrand.us/~ /media/products/resources/wiremold-products/floor-boxes /commercial/steel-concrete-floor-boxes/fire-classified-floor-boxes/ED1559R2pdf.ashx">http://www.legrand.us/~ /media/products/resources/wiremold-products/floor-boxes /commercial/steel-concrete-floor-boxes/fire-classified-floor-boxes/ED1559R2pdf.ashx</a>
Product Page URL *	<a href="http://www.legrand.us/Wiremold/floor-boxes/concrete-floor-boxes/fcfb-fire-classified -floor-box/880mpfc-nonmetallic-rectangular-floor-box.aspx">http://www.legrand.us/Wiremold/floor-boxes/concrete-floor-boxes/fcfb-fire-classified -floor-box/880mpfc-nonmetallic-rectangular-floor-box.aspx</a>
Provide Feedback*	<a href="https://www.surveymonkey.com/s/BDXT5XT">https://www.surveymonkey.com/s/BDXT5XT</a>
URL	<a href="http://www.legrand.us/wiremold">http://www.legrand.us/wiremold</a>

Materials	
Product Material*	PVC - Wiremold - White

Half-tone text in the property tables indicates that the value is locked from editing.

\*Indicates Shared Parameter and can be scheduled

## Loading and Placing into the Project

One "Electrical Fixtures" family is supplied and can be loaded into a Revit project through all traditional methods. The Floor Box requires a work-plane host to be placed within the project (i.e. floor). Also, ensure that the visibility settings within the project are modified to have the Electrical Fixtures category visible. The box has the ability to cut its host to aid in device plate placement.

## Project Behavior

Within the type and instance properties dialogues, the user will find useful information for scheduling purposes such as Height, Width, Depth, Installation Floor Type and other unique properties of the model. In "Identity Data" the user will find information specific to Wiremold and the model, i.e.: family revision information, Wiremold copyright information, part description, product URL and other specific data. \*See scheduling description below. The Modulink Series is modular. Each 'gang' is a separately ordered part and held together with a common flange. The flange may be selected through the 'Flange' parameter and the Cover Plate(s) may be selected through their respective parameter(s). Conduit may be drawn from any of the many connection points in the model. Some points may be concentric and have several possible sizes depending on which knock-out is used in the field. In this case, several model lines are drawn to the nominal sizes of each knock-out to assist users in conduit size selection. Once conduit is drawn from the connection, its size may be changed to match one of the other possibilities. Empty electrical parameters exist for entering in electrical requirements. These parameters are mapped to the connection points.

## Instance Parameter

In the "Instance Parameters", the user has the following options to modify:

Flange - Selects the common flange for the gangable boxes.

Cover Plate [1,2,3] - Selects the cover plate for each gangable box

## Type Parameter

Each type represents a manufactured product. Therefore, the type parameters should not be modified by the user. Please note:

Product Documentation Link - Directs a webpage to the products online listing.

Equipment Abbreviation - For filtering schedules. \*See scheduling description below.

Installation Location – Indicates grade level for installation.

Installation Floor Type – Depicts which floor finish the Floor Box is suitable for.

Box Capacity – Indicates the number of devices the box can support.

## **Visibility**

For best performance, all model geometry is turned off in Plan View and represented through masking regions and symbolic/model lines that update automatically when a user changes types.

## **Rendering**

When the family file is loaded into the project, standard Wiremold materials are imported. These may be modified, though ensure that the modification selection matches an actual manufacturer supplied option.

## **Schedule Creation**

Wiremold products may be scheduled utilizing the schedule view in the given project file. Select and copy (Ctrl-C) the schedule from the sheet view and paste it (Ctrl-V) into a sheet in your project. The schedule filters are set to look for only those units designated with Manufacturer as “Wiremold” and Equipment Abbreviation as “FB”. The schedules contain special functionality for displaying the configured order numbers of the different selected types.