

ETP-MT/R-AED
Blue Light Phone Tower with
Built-in AED Compartment

Description

The Blue Light Phone Tower with Built-in Automated External Defibrillator (AED) Compartment, Model **ETP-MT/R-AED**, provides outdoor access to a life-saving AED (sold separately), which can be unlocked through activation of the Call Station (i.e. initiation of a phone call) or remotely by an attendant.

Features

- Secured, recessed chamber to house AED unobtrusively
- Optional thermostatically controlled heater for AED compartment maintains temperature above freezing
- AED door can be either unlocked immediately at the initiation of a phone call or remotely by a guard as determined by the installer
- Available Key Reset Relay option allows the Blue Light to continuously flash until physically deactivated
- Offers contemporary architectural styling and prominent visibility
- Attention-getting LED Blue Light is included and mounted atop the unit. The LED Blue Light is continuously lit and flashes for the duration of a call when the “EMERGENCY” button is pressed to draw attention to the unit.
- LED Blue Light is housed in a protective polycarbonate housing (except for configurations with a camera arm)
- Two (2) ultra bright LED panel lights illuminate both the Call Station and the AED compartment door at all times
- Vandal-resistant structure and coating designed to resist extreme weather conditions
- A variety of signage, graphics, and color choices are available
- ADA-compliant

Specifications

| | |
|--|---|
| Construction: | 0.25 in. steel |
| Dimensions (W x D x H): | 12.0 x 10.0 x 108.0 in. (305 x 254 x 2743 mm) with 2 in. radius corners |
| Supported AED Dimensions (maximum W x D x H): | 8.5 x 5.5 x 12.0 in. (215.9 x 139.7 x 304.8 mm) |
| Weight: | 400 lbs. (181 kg) |
| Coating: | High-gloss, multi-layer, corrosion-inhibitive system with resistance to UV-fade and graffiti protection |
| Colors: | Safety Blue is standard. Available in other colors. |
| Signage: | 3.25-inch high reflective white “EMERGENCY” lettering with wide-angle visibility is standard. Available in other colors, lettering, and graphics. |
| Lighting: | LED Blue Light: 209 lumens peak, 78 flashes per minute, 70% of initial lumens after 50,000 hours of operation |
| | LED Panel Light: Ultra bright LEDs, 50,000 hour lifetime |
| Power: | LED Blue Light: (select 120VAC or 12-24VDC/24VAC configuration at time of purchase) 7.8 watts, 120VAC 7.8 watts, 12-24VDC/24VAC |
| | LED Panel Light: 1.2 watts, 12-120VAC/DC |



ETP-MT/R-AED

Blue Light Phone Tower with Built-in AED Compartment

Specifications (Continued)

| | |
|-------------------------------|--|
| Mounting: | Mounts into concrete foundation using included hardware (shipped in advance). Mounting options available for pre-poured parking decks. |
| Operating Temperature: | -40° F to +150° F (-40° C to +65° C) |
| Ingress Protection: | NEMA 3R |
| Approvals: | ETL Recognized – Conforms to UL Standards 60950-1 and 60950-22. Certified to CSA Standard C22.2 Nos. 60950-1 and 60950-22. |
| Warranty: | 5-year limited warranty on metal and mechanical components 2-year limited warranty on electronics (i.e. lighting) |



Ordering Information

| | | (A) | (B) |
|------------|-----------------|--|--|
| | Model Series | AED Compartment | Area Light / Overhead Camera |
| | ETP-MT/R | <p>-AED Integrated housing for automated external defibrillator (AED)—AED not included</p> <p>-AED-HTR Integrated housing for automated external defibrillator (AED) with heater/thermostat—AED not included</p> | <p>[Leave Blank] No area light or overhead camera support</p> <p>-BLP1 Area light provided, overhead camera ready</p> <p>-OP4 Overhead camera ready</p> |
| Example #1 | ETP-MT/R | -AED | |
| Example #2 | ETP-MT/R | -AED-HTR | -BLP1 |

IMPORTANT NOTE:

Tower includes:

- an LED Blue Light
- two (2) LED Panel Lights
- Anchor Bolt Kit

Call Station is sold separately. AED and overhead camera are to be provided by others (i.e. not Talkaphone).

Options

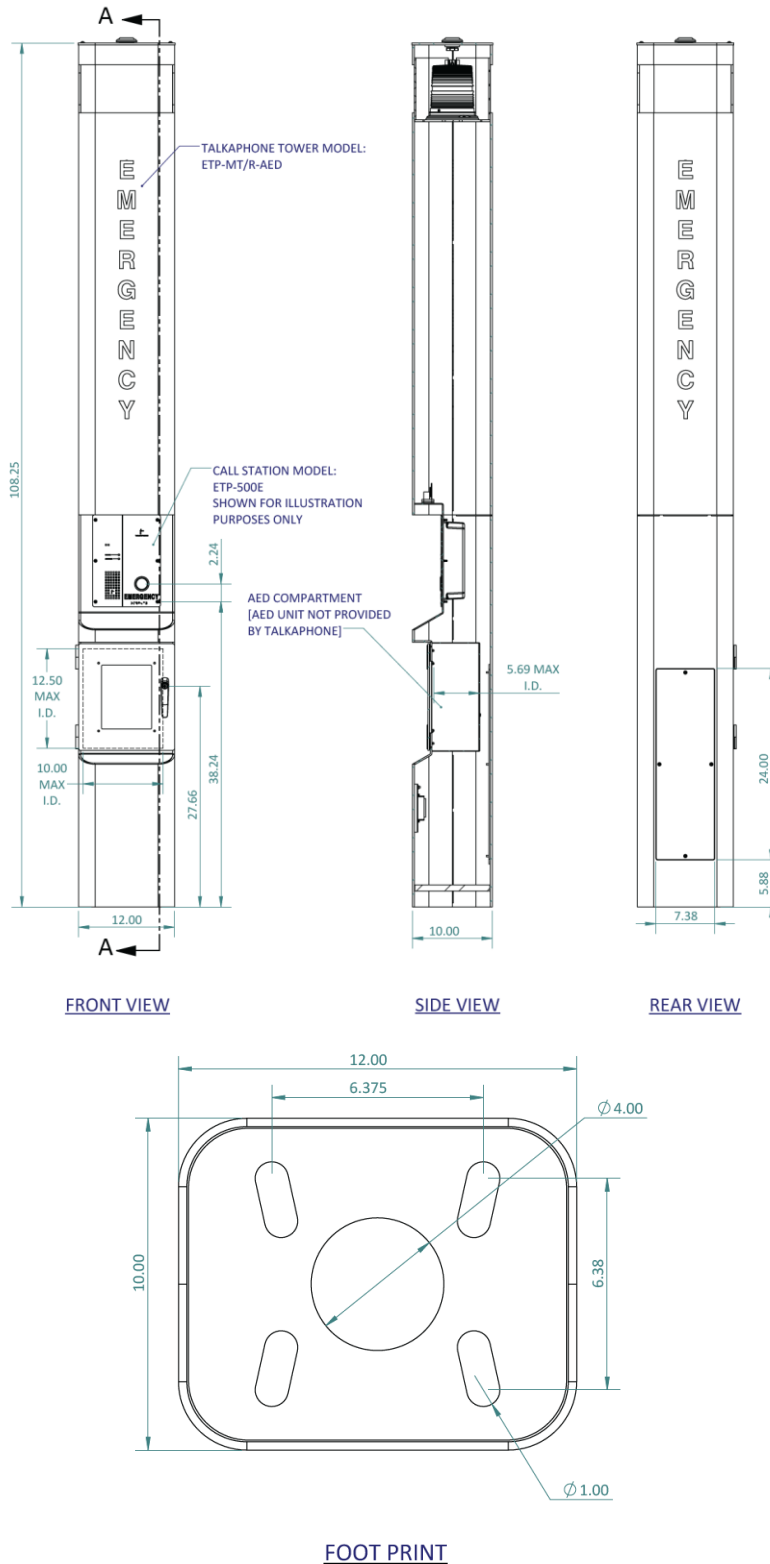
| | |
|---------------------------------|--|
| ETP-MT-PCS Configuration | Call Station |
| Analog Connectivity | ETP-500 Series Analog Call Station |
| IP Connectivity | VOIP-500 or VOIP-600 Series IP Call Station |

Parking Deck Mounting Kit: Order model **ETP-PDMK-4** to mount on pre-poured parking deck.

ETP-MT/R-AED

Blue Light Phone Tower with Built-in AED Compartment

Dimensional Diagram



The AED compartment supports an AED (sold separately) with maximum dimensions (W x D x H) of 8.5 x 5.5 x 12.0 in. (215.9 x 139.7 x 304.8 mm).

All dimensions are in inches and are provided for reference only.