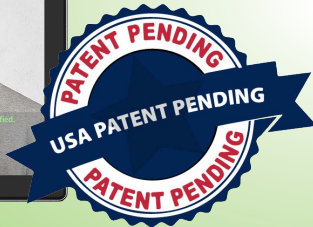


SF1008T+



SF1008T+

Body-Temperature & Mask Detection
with Face & Palm Recognition



SpeedFace + is a series of body-temperature and mask detection readers with integrated face & palm recognition used in user authentication applications.

The SpeedFace+ embedded face recognition sensor provides 100% touchless user authentication for various applications including Access Control, Time & Attendance, Visitor Management, Event Management and more. SF1008T+ can store and match up to 50,000 faces in less than 0.3 seconds while operating in both total darkness and bright sunlight (up to 50,000 Lux).

Body Temperature & Mask Detection

In addition to providing face, palm, and fingerprint user authentication, SpeedFace+ can detect body temperature and the presence of a protective mask being worn by both registered and unregistered users. Users can be denied door access if a user defined unacceptable body temperature or if no mask is detected.

The ability to quickly & accurately detect body temperature and the presence of a mask is becoming increasingly important for airports, schools, commercial office buildings, and other public meeting areas. People identified with unacceptable body temperature and their supervisors can then take appropriate action. SpeedFace+ combines a powerful embedded thermal imaging camera and ZKTeco's latest face and fingerprint recognition algorithms that are supported by an optimized dual-core processor. SpeedFace+ is unmatched in accuracy, matching speed and versatility. It provides advanced security and convenience, all on a single affordable device.

FEATURES:

- User authentication read range up to 8 feet
- Body-temperature read range accurate up to +/- 0.6°F
- Thermal Imaging Camera
- Model SF1008T+ stores & matches up to 50,000 face templates
- Face verification with or without wearing a mask
- Model SF1008T+ has an 8" programmable touchscreen display
- Intelligent energy-saving design
- Dual-lens IR & VL camera recognizes faces in both total darkness and bright sunlight

	Thermal Imaging Camera SF1008T+	Thermopile Sensor SF1008+
Calibration	Not needed	Needed
Reading Distance	2.5 feet	18 inches
Measuring Points	10,800 points	1024 points
Adaptable	Adapts to unstable environments	Needs additional calibration in unstable environments

SPECIFICATIONS:

Capacity

Faces: 50,000 | Palms: 5,000

Compatibility

Wiegand Input Panels Wiegand Output readers ZKBioSecurity Software ZKTeco Security Relay Box (SRB)

Hardware

900 MHz Dual Core CPU
512MB RAM/ 8G Flash
8" Touch Screen Display
2MP WDR Camera
Distance Detection Sensor
Reset Button & Tamper Switch
Operating System: Linux

Standard Functions

Access Levels, Groups,
Holidays DST,
Duress Mode (password)
Anti-Passback, Record Query
Tamper Switch Alarm

Temperature Detection

Accuracy: +/- 0.6 °F
Distance: up to 2.5 feet

Protective Mask Detection

Access Control Interface

Lock Relay Output
Alarm Output / Auxiliary Input Exit
Button / Door Sensor

Special Functions

Liveness Detection
Event Snapshot

Communication

TCP / IP
RS485
Wiegand Input / Output
Wi-Fi

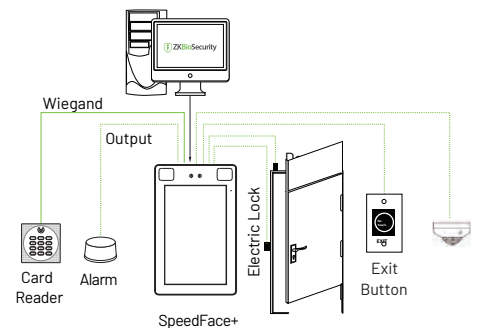
Additional Info

Face Algorithm: ZKLiveFace 5.8
Working Temp (Reader): -40°F to 140°F
Working Temp (Sensor): 68°F -96°F
Working Humidity: 20% - 93%
Storage Temp: 32 to 122°F
Storage Humidity: 20% - 90%
Net Weight: 1.5 lbs
Size (HxLxD): 8.9 x 5.6 x 1 inch

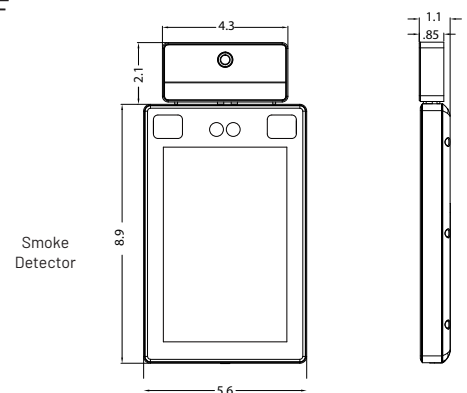
Power

Operating Voltage: 12V DC Current
Draw: < 2,000mA

CONFIGURATION:



DIMENSIONS (IN.):



Model SF1008T+



1600 Union Hill Road Alpharetta, GA 30005
Phone: (862) 505-2101 | Fax: (862) 204-5906 | info@zktecousa.com | www.zktecousa.com

© Copyright 2023. ZKTeco Inc. ZKTeco Logo and ZKTeco USA Logo have registered trademarks of ZKTeco or a related company. All other product and company names mentioned are used for identification purposes only and may be trademarks of their respective owners. All specifications are subject to change without notice. All rights reserved.