

**Lowell.**<sup>TM</sup>

# RACKS, POWER, & RACKWARE<sup>®</sup> ACCESSORIES

A quick reference guide



*Quality Solutions  
Exceptional Service*

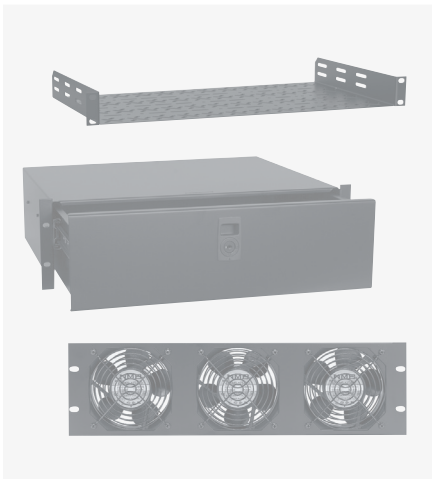


# TABLE OF CONTENTS



## RACKS & BOXES

<b>Floor Racks</b> .....	<b>1-2</b>	<b>Racks for Built-In Applications</b> .....	<b>5</b>
Open Frame .....	1	Pull-out .....	5
Stand-Alone .....	2	Stationary .....	5
Two-Post .....	1	<b>In-Wall Boxes</b> .....	<b>5</b>
<b>Wall Racks</b> .....	<b>3-4</b>	<b>Wall-Mount Shelves</b> .....	<b>5</b>
Stationary .....	3	<b>Portable Racks</b> .....	<b>6</b>
Swing-Open .....	3	<b>Desktop / Under Counter Racks</b> .....	<b>6</b>
Tilt-Out .....	3	<b>Rack Accessory Bundles</b> .....	<b>7</b>
Networking .....	4		



## RACKWARE® ACCESSORIES

<b>Rackmount Shelves</b> .....	<b>9-10</b>	<b>Specialty Tops &amp; Covers</b> .....	<b>18</b>
<b>Rackmount Drawers, Liners &amp; Storage</b> ..	<b>11</b>	<b>Display Mount</b> .....	<b>18</b>
<b>Cable Management</b> .....	<b>12-14</b>	<b>Doors &amp; Access Covers</b> .....	<b>19-20</b>
<b>Thermal Management</b> .....	<b>14-15</b>	<b>Panels &amp; Security Covers</b> .....	<b>21-23</b>
<b>Rack Bases</b> .....	<b>16</b>	<b>Rack Lighting</b> .....	<b>23</b>
<b>Mounting Rails</b> .....	<b>17-18</b>	<b>Hardware</b> .....	<b>24-25</b>



## DISTRIBUTED POWER

<b>Power Strips</b> .....	<b>27</b>	<b>Pass-Through Connection Devices</b> .....	<b>32</b>
<b>Rackmount Panels w/Power</b> .....	<b>28</b>	Pass-Through Sequencers .....	32
<b>Uninterruptible Power Supplies</b> .....	<b>29</b>	Pass-Through Remote Power Controls ...	32
<b>Low-Voltage (SPST) Switches</b> .....	<b>30</b>	Pass-Through Relays .....	32
<b>Classic Connection Devices</b> .....	<b>31</b>	<b>Advanced Surge Suppression</b> .....	<b>33</b>
Classic Sequencers .....	31	<b>Multi-Output DC Power Distribtuion</b> .....	<b>33</b>
Classic Remote Power Controls .....	31		
Classic Relays .....	31		

# FLOOR RACKS

One rack unit (U) equals 1.75 inches.

## OPEN-FRAME / GANGABLE



LGR Series	gangable rack
Side Panels	optional
Rear Door	included *
Front Door	optional
Mounting Rails	adjustable, tapped 10-32
Rack Units	24, 35, 40 or 44U
Overall Depth	22, 27, 32, 36 or 42 in.
Overall Width	23.06 in.
Load Capacity	3150 lbs. (UL Listed)

\* may be omitted if not needed



LSGR Series	seismic-certified, gangable
Side Panels	optional
Rear Door	included
Front Door	optional
Mounting Rails	adjustable, tapped 10-32
Rack Units	40 or 44U
Overall Depth	27, 32 or 36 in.
Overall Width	23.06 in.
Load Capacity	900-1200 lbs.* (seismic-cert) 3150 lbs. (UL Listed)

\* Professional Engineer certified for two categories of seismic qualification. See online P.E. Certification documents for details.



LGNR Series	narrow gangable rack
Side Panels	optional
Rear Door	included *
Front Door	optional
Mounting Rails	adjustable, tapped 10-32
Rack Units	24, 37, 40 or 44U
Overall Depth	27, 32 or 36 in.
Overall Width	22.00 in.
Load Capacity	3150 lbs. (UL Listed)

\* may be omitted if not needed



**B** RACK WITH ACCESSORY BUNDLE AVAILABLE:  
See page 7.



LGVR Series	gangable video rack
Side Panels	optional
Rear Door	included
Front Door	optional
Mounting Rails	adjustable, tapped 10-32
Rack Units	44U
Overall Depth	32 or 36 in.
Overall Width	22.00 in.
Load Capacity	3150 lbs. (UL Listed)



54U ↑

LGTR Series	extra-tall gangable rack
Side Panels	optional
Rear Door	included *
Front Door	optional
Mounting Rails	adjustable, tapped 10-32
Rack Units	54U
Overall Depth	32 or 36 in.
Overall Width	22.00 in.
Load Capacity	3150 lbs. (UL Listed)

\* may be omitted if not needed



LXR Series	slim frame
Side Panels	optional
Rear Access Cover	optional
Front Door	optional
Mounting Rails	corner-post, tapped 10-32
Rack Units	8, 14, 22, 30*, 38* or 44U*
Overall Depth	21.00 or 26.25 in.
Overall Width	19.21 in.
Load Capacity	400 lbs.
Ships	unassembled

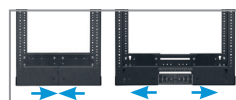
\* Side support brackets included with racks 30U and taller.

**B** RACK WITH INSTALLED ACCESSORIES  
AVAILABLE: Visit [www.lowellmfg.com](http://www.lowellmfg.com) for details.



LVR Series	VARI-RACK™ slim frame, adjustable depth
Rear Access Cover	optional
Front Door	optional
Mounting Rails	corner-post, tapped 10-32
Rack Units	8, 14, 22, 30*, 38* or 44U*
Overall Depth	14-21 or 21-28 in. adj.
Overall Width	19.21 in.
Load Capacity	400 lbs.
Ships	unassembled

\* Side support brackets included with racks 30U and taller.



**←** ADJUSTABLE DEPTH: Side views of rack closed and expanded.

## TWO-POST



LRR Series	two-post rack
Vertical Channels	3 in. wide
Rack Units	38 or 45U
Overall Depth	15 in.
Overall Width	20.25 in.
Ships	unassembled



## STAND-ALONE



### LER Series

	enclosed rack
Side Panels	welded
Rear Door	included*
Front Door	optional
Mounting Rails	adjustable, tapped 10-32
Rack Units	18, 21, 24, 35, 40 or 44U
Overall Depth	22, 27 or 32 in.
Overall Width	23.06 in.
Load Capacity	500-3150 lbs. (UL Listed)

\* may be omitted if not needed



RACK WITH BUNDLED ACCESSORIES AVAILABLE. See page 7.



### LSR Series

	seismic-certified, enclosed
Side Panels	welded
Rear Door	included
Front Door	optional
Mounting Rails	adjustable, tapped 10-32
Rack Units	35, 40 or 44U
Overall Depth	27 or 32 in.
Overall Width	23.06 in.
Load Capacity	900-1200 lbs.* (seismic-cert) 3150 lbs. (UL Listed)

\* Professional Engineer certified for two categories of seismic qualification. See online P.E. Certification documents for details.



### LFR Series

*Economical*

	fixed rail rack
Side Panels	welded
Rear Door	included
Front Door	optional
Front Rails	fixed, tapped 10-32
Rear Rails	optional (semi-adjustable)
Rack Units	21, 24, 35, 40 or 44U
Overall Depth	22 or 27 in.
Overall Width	23.06 in.
Load Capacity	500-2000 lbs. (UL Listed)



REAR SUPPORT BRACKETS: Allow semi-adjustable mounting of rails and accessories in rear of rack.



### LHR Series

	host rack (exterior cabinet with pull-out rack)
Side Panels	welded
Rear Access Cover	optional
Front Door	optional
Mounting Rails	corner-post, tapped 10-32
Rack Units	24, 35 or 44U
Overall Depth	33 or 43 in.
Overall Width	24.00 in.
Load Capacity	750 lbs.



SLIDES OUT & ROTATES: Interior base and rack slide out of cabinet allowing rack to rotate, and can disengage from cabinet for shop wiring.



### LLR Series

	laminate rack
Front/Rear Doors	-----
Mounting Rails	fixed, tapped 10-32
Rack Units	10, 12, 16 or 21U
Overall Depth	18 in.
Overall Width	20.41 in.
Laminate Finish	Black Woodgrain
Load Capacity	200 lbs.
Ships	unassembled



### LDR Series

	designer rack
Side Panels	included
Rear Access Cover	included
Front Door	included (tempered glass)
Mounting Rails	adjustable, tapped 10-32
Rack Units	18, 27, 35 or 42U
Overall Depth	24 in.
Overall Width	22.31 in.
Load Capacity	500-1200 lbs.



FRONT DOOR INCLUDED: Smoked grey tempered glass door with keyed lock.



RACK WITH INSTALLED ACCESSORIES AVAILABLE, see page 7.

# WALL RACKS

One rack unit (U) equals 1.75 inches.

## STATIONARY



LWER Series	stationary wall rack
Side Panels	welded
Front Door	included (solid)
Mounting Rails	fixed, tapped 10-32
Rack Units	7 or 10U
Overall Depth	18.18 in.
Overall Width	23.06 in.
Load Capacity	150 lbs. (UL Listed)

**FRONT DOOR INCLUDED:**  
Solid steel with keyed lock.



VR Series	wall rack (space saver)
Rack Units	2, 3, or 4U
Overall Height	6 in.
Overall Depth	3.94, 5.69 or 7.44 in.
Overall Width	19.17 in.
Load Capacity	200 lbs.

## SWING-OPEN



**SWINGS OPEN 90°:**  
Cabinet swings open for access to equipment.

LWSR Series	<i>Economical</i> swing-open, wall rack
Side Panels	welded
Front Door	optional
Mounting Rails	fixed, tapped 10-32
Rack Units	7, 10, 12 or 16U
Overall Depth	22 in.
Overall Width	23.06 in.
Load Capacity	150 lbs.



**SWINGS OPEN GREATER THAN 90°:** Cabinet swings open for access to equipment.

LWR Series	heavy duty sectional, swing-open wall rack
Side Panels	welded
Front Door	optional
Mounting Rails	adjustable, tapped 10-32
Rack Units	7, 10, 12, 16, 21, 24 or 35U
Overall Depth	19, 23, 28 or 32 in.
Overall Width	23.06 in.
Load Capacity	125-300 lbs. (UL Listed)



**SWINGS OPEN ON BASE:** Cabinet swings open 90° on support base for access to equipment.

LWBR Series	swing-open wall rack with support base
Side Panels	welded
Front Door	optional
Mounting Rails	adjustable, tapped 10-32
Rack Units	24, 35, 40 or 44U
Overall Depth	22.40, 28.40 or 32.40 in.
Overall Width	23.06 in.
Load Capacity	500 lbs.

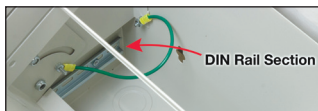


## TILT-OUT



**MANUAL RELEASE:** Main compartment tilts out for equipment operation, and down for servicing.

LTR Series	tilt-out wall rack
Style	surface or recessed
Main Compartment	manual release
Mounting Rails	adj. & fixed, tapped 10-32
Rack Units	3U horiz.; 2, 3 or 4U vertical
Overall Depth	5.13 - 8.13 in.
Overall Width	24.50 - 25.70 in.
Load Capacity	100 lbs.



**DIN RAIL:** Found in base of LTR Series wall racks.



**CONTROLLED RELEASE:** Main compartment features dampers for controlled descent.

LTCR Series	tilt-out wall rack with dampers
Style	surface or recessed
Main Compartment	controlled release
Mounting Rails	adj. & fixed, tapped 10-32
Rack Units	3U horiz.; 3U vertical
Overall Depth	6.09 or 6.80 in.
Overall Width	25.00 or 26.50 in.
Load Capacity	50 lbs.

## NETWORKING



### SR Series

	swing gate wall rack
Mounting Rails	fixed, tapped 10-32
Rack Units	12, 20 or 25U
Overall Depth	12, 18 or 24 in.
Overall Width	19.60 in.
Load Capacity	100 lbs.
Ships	unassembled

◀ **SWINGS OPEN 90°:** Front gate (left or right orientation) swings open for access.



### SGR Series

	heavy duty swing gate wall rack
Mounting Rails	fixed, tapped 10-32
Rack Units	12 or 20U
Overall Depth	13.21 or 19 in.
Overall Width	20.03 in.
Load Capacity	150 lbs.

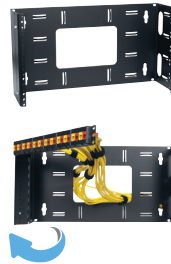
◀ **SWINGS OPEN 90°:** Front gate (left or right orientation) swings open from fully open side for extraordinary access.



▲ **PIVOTS DOWN:** Frame pivots down 90° with absolute stop

### PFR Series

	pivot frame wall rack
Top Cover	optional
Front Panel	optional
Mounting Rails	fixed, tapped 10-32
Rack Units	4, 6 or 8U
Overall Depth	6, 12 or 18 in.
Overall Width	19.30 in.
Load Capacity	30-60 lbs.



### HUB Series

	hinged wall bracket
Top Cover	optional
Mounting Rails	fixed, tapped 10-32
Rack Units	2, 4 or 6U
Overall Depth	6 in.
Overall Width	19.17 in.

◀ **180° SWING-OUT:** Hinged design allows easy access to cables.



### RCC Series

	remote consolidation cabinet
Style	surface
Front Door	included (vented)
Mounting Rails	fixed, dual-punch*
Top Rack Units	2U horiz., pivot-down access
Bottom Rack Units	2 or 4U vertical-mount
Overall Depth	5.00 - 7.50 in.
Overall Width	25.50 in.
Load Capacity	150 lbs.

\* Tapped 10-32 for screws, plus holes for alternate hardware

◀ **FRONT DOOR INCLUDED:** Vented steel with beveled edges and side lock.



### RCCD Series

	remote consolidation cabinet with flip-top access
Style	surface
Front Door	included (flip-top, vented)
Mounting Rails	fixed, dual-punch*
Top Rack Units	4U horiz., pivot-down access
Bottom Rack Units	6U vertical-mount
Overall Depth	11.19 in.
Overall Width	25.50 in.
Load Capacity	150 lbs.

\* Tapped 10-32 for screws, plus holes for alternate hardware

◀ **FRONT DOOR INCLUDED:** Vented steel with beveled edges, side lock and flip-top.



### SMR Series

	side/top-mount wall rack
Style	surface
Versatile Mount	side- or top-mount
Mounting Rails	adjustable, tapped 10-32
Rack Units	2 or 4U
Overall Depth	21.63 in.
Overall Width	19.13 in.
Load Capacity	50 lbs.

◀ **VERTICAL OR HORIZONTAL MOUNT:** Bi-directional keyhole slots on standard 16 in. centers mounts rack vertically or horizontally.



### WXR Series

	slim wall rack
Mounting Rails	fixed, tapped 10-32
Rack Units	8, 12, 22 or 30
Overall Depth	6, 12 or 18 in.
Overall Width	19.21 in.
Load Capacity	125 - 200 lbs.
Ships	unassembled

# RACKS FOR BUILT-IN APPLICATIONS

One rack unit (U) equals 1.75 inches.

## PULL-OUT



LPOR Series	pull-out rack
Mounting Rails	corner-post, tapped 10-32
Rack Units	7, 10, 12, 14, 16 or 21U
Overall Depth	19.22 in.
Overall Width	19.06 in.
Load Capacity	125-250 lbs.*
Ships	unassembled

\*Dependent upon model.

PULL-OUT: Base slides forward.



LPTR Series	pull & turn rack
Mounting Rails	corner-post, tapped 10-32
Rack Units	10, 12, 14, 16, 21, 24, 28, 30U
Overall Depth	19.22 or 23.23 in.
Overall Width	19.13 in.
Load Capacity	125-250 lbs.*
Ships	unassembled

\*Dependent upon model.

PULL & TURN: Base slides forward. Rack rotates left or right with 90° and 60° stops.



## STATIONARY



LCR Series	credenza rack
Mounting Rails	corner-post, tapped 10-32
Rack Units	8, 10, 12 or 14U
Overall Depth	16 or 18 in.
Overall Width	19.25 in.
Load Capacity	250 lbs.



LHFR Series	half rack
Base	top/bottom integral rails
Mounting Rails	corner-post, tapped 10-32
Rack Units	8 or 12U
Overall Depth	14 in.
Overall Width	10.69 in.
Load Capacity	125 lbs.

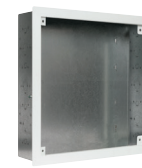


## IN-WALL BOXES



IWB Series	in-wall boxes
Box Height *	9.25, 14.25 or 22.25 in.
Box Depth *	3.6 in.
Box Width *	14.25 in.
Load Capacity	15 lbs.

\* Without trim plate



IWBK-1414	in-wall box with breakaway
Box Height *	14.25 in.
Box Depth	3.9 in.
Box Width *	14.25 in.
Load Capacity	15 lbs.

\* Without trim plate

ADJUSTABLE DEPTH: Sides have breakaway sections for shallower depth.



IWB-PB Series	power brackets for IWB(K) boxes
Height	2.2 in.
Width	2.2 in.
Length	9.53 in. or 14 in.

MODELS:

IWB-PB2	NEMA 5-15R duplex (2)
IWB-PB3	NEMA 5-15R duplex (3)
IWB-PB220S	NEMA 5-20R duplex (2) w/surge suppression
IWB-PB320S	NEMA 5-20R duplex (3) w/surge suppression

## WALL-MOUNT SHELVES



WS21-17	welded wall shelf (heavy duty)
Overall Height	15 in.
Overall Depth	17 in.
Overall Width	21 in.
Load Capacity	200 lbs.



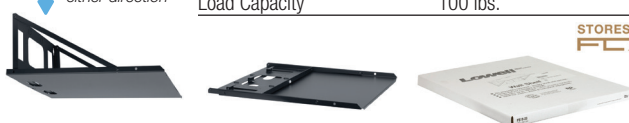
WLS-1814	wall shelf
Overall Height	3.47 in.
Overall Depth	14 in.
Overall Width	18 in.
Load Capacity	40 lbs.



FS Series	flat-ship wall shelf (hinged)
Overall Height	8.24 in.
Overall Depth	14, 16 or 20 in.
Overall Width	18.22 in.
Load Capacity	100 lbs.

Install shelf either direction

STORES \ SHIPS  
FLAT



**NEW**



WMS-CPU Series	shelves for computer tower
Overall Height	10.00 in.
Overall Depth	4 in. or 8 in.
Overall Width	19.09 in.
Load Capacity	75 lbs.





<b>LPR Series</b>		portable rack
Top	steel	
Side Panels	welded, recessed handle	
Rear Door	included	
Front Door	included (solid)	
Mounting Rails	adjustable, tapped 10-32	
Rack Units	14, 21 or 24U	
Overall Depth	22 or 27 in.	
Overall Width	23.06 in.	
Load Capacity	900 lbs. (UL Listed)	

 **FRONT DOOR INCLUDED:**  
Solid steel with keyed lock.



<b>LPR-FV Series</b>		portable rack
Top	steel	
Side Panels	welded, recessed handle	
Rear Door	included	
Front Door	included (fully-vented)	
Mounting Rails	adjustable, tapped 10-32	
Rack Units	14, 21 or 24U	
Overall Depth	22 or 27 in.	
Overall Width	23.06 in.	
Load Capacity	900 lbs. (UL Listed)	

 **FRONT DOOR INCLUDED:**  
Fully-vented with keyed lock.



<b>LPR-PGT Series</b>		portable rack
Top	steel with laminate	
Side Panels	welded, recessed handle	
Rear Door	included	
Front Door	included (smoked plexiglass)	
Mounting Rails	adjustable, tapped 10-32	
Rack Units	14, 21 or 24U	
Overall Depth	22 or 27 in.*	
Overall Width	23.06 in.*	
Load Capacity	900 lbs. (UL Listed)	

\* Without laminate top.

 **FRONT DOOR INCLUDED:**  
Smoked plexiglass with keyed lock.



<b>LPPR-2432</b>		portable presentation rack
Top	steel with laminate	
Side Panels	welded	
Rear Door	included	
Front Door	included (smoked plexiglass)	
Mounting Rails	adjustable, tapped 10-32	
Rack Units	24U	
Overall Depth	32 in.*	
Overall Width	23.06 in.*	
Load Capacity	900 lbs. (UL Listed)	

\* Without laminate top.

 **FRONT DOOR INCLUDED:**  
Smoked plexiglass with keyed lock.



## DESKTOP / UNDER COUNTER RACKS



<b>LDTR Series</b>		desktop rack
Side Panels	welded	
Rear Access Cover	optional	
Front Door	optional	
Mounting Rails	fixed, tapped 10-32	
Rack Units	7, 10, 12, 14 or 16U	
Overall Depth	18.18 in.	
Overall Width	23.06 in.	
Load Capacity	150 lbs.	



<b>LDSR Series</b>		desktop rack with sloped front
Side Panels	welded	
Rear Access Cover	optional	
Front Door	-----	
Mounting Rails	fixed, tapped 10-32	
Rack Units	7, 10 or 12U	
Overall Depth	18 in. (at base)	
Overall Width	21.10 in.	



<b>LPSR Series</b>		rollout studio rack with sloped front, casters
Side Panels	welded	
Rear Access Cover	included	
Front Door	included (stowaway style)	
Mounting Rails	fixed, tapped 10-32	
Rack Units	12U	
Overall Depth	25.52 in. (at base)	
Overall Width	23 in.	
Load Capacity	250 lbs.	

 **FRONT DOOR INCLUDED:** Steel stowaway style.



<b>LRS Series</b>		two-post angled rack
Mounting Rails	corner-post, tapped 10-32	
Rack Units	8 or 12U	
Overall Depth	11.5 in.	
Overall Width	19.06 in.	
Load Capacity	80 lbs.	
Ships	unassembled	





# RACK ACCESSORY BUNDLES

One rack unit (U) equals 1.75 inches.

**RACKS & BOXES**

**Made in USA**  
100% Certified U.S. Steel



**LER-BAV Series:** enclosed rack with accessory bundle (packaged separately)

**INCLUDES:**

- Solid front door w/key lock
- Two pair adjustable rails
- Power strip(s) w/15A and 20A outlets
- 7U panel w/four whisper fans
- Horizontal and vertical cable managers
- Heavy-duty leg levelers
- Magnetic vent blockers

See spec sheets online for more details



**LGNR-BAV Series:** narrow gangable rack with accessory bundle (packaged separately)

**INCLUDES:**

- Solid front door w/key lock
- Side panels w/integral handles
- Power strip w/15A and 20A outlets
- 7U panel w/turbo fan
- Thermostat control for fan activation
- Horizontal and vertical cable managers
- Heavy-duty leg levelers

See spec sheets online for more details



**LCDR Series:** pre-configured design rack with installed accessories

**INCLUDES:**

- Seven vented shelves
- Seven blank panels
- Two whisper fans in top vents
- Swivel casters
- Leg levelers

See spec sheets online for more details

# RACKWARE®

## ACCESSORIES



## SHELVES

**Zero-Space Shelf:** For wide equipment that won't fit standard rack spacing. Mounts on side rails at four points. 16-ga. steel with bottom vents and side obrounds. Black finish.

Model No.	Fits	Depth	Load Capacity
LXR-NS21	LXR Rack 21"D	20.45"	250 lbs.
LXR-NS26	LXR Rack 26"D	25.69"	250 lbs.
LPTR-NS	LPTR and LPOR Rack	16.38"	250 lbs.

**Utility Shelf:** 16-ga. steel utility shelf with flanges. Rear flange features notches for mounting optional 12" power strip (Lowell model no's ACS-1506-WW or ACS-1507). Black finish.

Model No.	Height	Depth	Width	Load Capacity
US-110*	1U	10.75"	19.00"	50 lbs.
US-114*	1U	14.00"	19.00"	50 lbs.
US-210*	2U	10.75"	19.00"	50 lbs.
US-214*	2U	14.00"	19.00"	50 lbs.
US-310	3U	10.75"	19.00"	50 lbs.
US-314*	3U	14.00"	19.00"	50 lbs.
US-414	4U	14.00"	19.00"	50 lbs.

Bundle No.	Bundle Description
USAC-110	US-110 plus power strip
USAC-114	US-114 plus power strip
USAC-210	US-210 plus power strip
USAC-214	US-214 plus power strip



\* Available in multi-pack carton. See spec sheet for details.

**Utility Shelf for Electronics:** 16-ga. steel utility shelf with punched base for screw-mount installation of chassis style accessories. Front security panel. Rear flange and cable lacing points. Black finish.

Model No.	Height	Depth	Width	Load Capacity
USE-210	2U	10.00"	19.00"	50 lbs.
USE-310	3U	10.00"	19.00"	50 lbs.

**Utility Shelf, Multiple Mounting Slots:** 16-ga. steel utility shelf with mounting holes and slots in the base to provide a variety of tie-down points for small devices. Black finish.

Model No.	Height	Depth	Width	Load Capacity
USM-110*	1U	10.00"	19.00"	25 lbs.
USM-210*	2U	10.00"	19.00"	25 lbs.

\* Available in multi-pack carton. See spec sheet for details.

**Utility Shelf, Multiple Mounting Slots, Flange:** 16-ga. steel utility shelf with mounting holes and slots in the base to provide a variety of tie-down points for small devices. Includes front and rear flanges. Rear flange features notches for mounting optional 12" power strip (Lowell model no's ACS-1506-WW or ACS-1507). Black finish.

Model No.	Height	Depth	Width	Load Capacity
USMG-114	1U	14.00"	19.00"	25 lbs.

**Utility Shelf, Vented:** 16-ga. steel utility shelf with vented base and flanges. Rear flange on 19"W models features notches for mounting optional 12" power strip (Lowell model no's ACS-1506-WW or ACS-1507). Black finish.

Model No.	Height	Depth	Width	Load Capacity
USV-110	1U	10.75"	19.00"	50 lbs.
USV-214	2U	14.00"	19.00"	50 lbs.
USV-314	3U	14.00"	19.00"	50 lbs.
USV-414	4U	14.00"	19.00"	50 lbs.
USV-218	2U	18.00"	19.00"	50 lbs.
UVSH-13	1.719"	3.5"	10.40"	10 lbs.
UVSH-15	1.719"	5.5"	10.40"	10 lbs.
UVSH-111	1.719"	11.5"	10.40"	10 lbs.

Bundle No.	Bundle Description
USVAC-110	USV-110 plus power strip
USVAC-214	USV-214 plus power strip
USVAC-218	USV-218 plus power strip

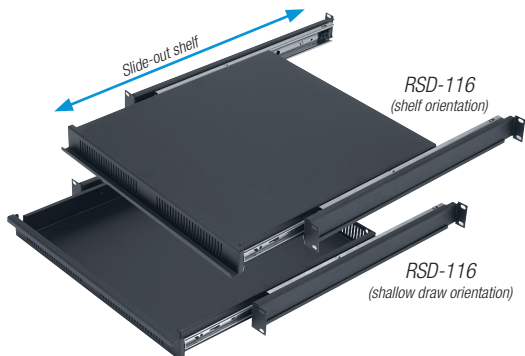
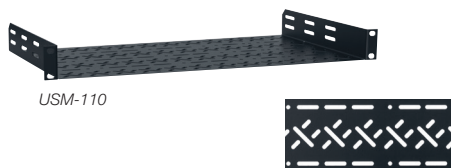
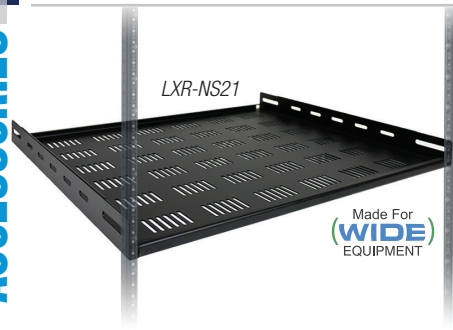


**Utility Shelf, Clamping:** 16-ga. steel utility shelf with vents, clamping brackets to secure equipment, rear stops, and flanges. Side slots allow height adjustment of brackets. Black finish.

Model No.	Height	Depth	Width	Load Capacity
USVC-215	2U	15.00"	19.00"	50 lbs.
USVC-315	3U	15.00"	19.00"	50 lbs.
USVC-415	4U	15.00"	19.00"	50 lbs.

**Reversible Shelf/Drawer:** 16-ga. steel slide-out shelf, or shallow drawer depending upon orientation, with rear supports. Black finish.

Model No.	Height	Drawer Depth	Width	Load Capacity
RSD-116	1U	18.00" - 33.00"	19.00"	80 lbs.



**Knockdown Shelf:** Base and sides sold separately for mix-and-match versatility. 16-ga. steel base with vents ships with hardware. Black finish.

Model No.	Description	Depth	Quantity	Load Capacity	For KSB Base
KSE2	2U sides	14.00"	1pr	50 lbs.	KSB14 & KSB18
KSE3	3U sides	14.00"	1pr	70 lbs.	KSB14 & KSB18
KSE4	4U sides	14.00"	1pr	70 lbs.	KSB14 & KSB18
KSE2X	2U sides	18.00"	1pr	50 lbs.	KSB18 & KSB21
KSE3X	3U sides	18.00"	1pr	70 lbs.	KSB18 & KSB21
KSE4X	4U sides	18.00"	1pr	70 lbs.	KSB18 & KSB21
KSB14	Vented base	14.00"	1 ea.	---	---
KSB18	Vented base	18.00"	1 ea.	---	---
KSB21	Vented base	21.00"	1 ea.	---	---

**OPTIONS**

KSTB	Clamping bracket
------	------------------

**Variable Depth Shelves:** 16-ga. steel shelf with vents, adjustable depth and brackets. Black finish. Two styles.

Model No.	Height	Useable Depth	Width	Load Capacity
VDS-2-2032	2U	20.00" - 32.00"	19.00"	250 lbs.
VDS-1-1525	1.50" (-1U)	15.25" - 25.00"	19.00"	400 lbs.

**Variable Width Shelf:** 16-ga. steel, 3-piece shelf with side supports expands from 17.5"-22"W behind front rack rails. Side supports can be installed with long or short side up to emulate 2U or 3U panel space. Black finish.

Model No.	Height	Depth	Useable Width	Load Capacity
VWS-214	2U or 3U	14.00"	17.50" - 22.00"	50 lbs.
VWS-218	2U or 3U	18.00"	17.50" - 22.00"	50 lbs.

**Keyboard/Monitor Shelf:** Reinforced shelf for a monitor and slide-out shelf for keyboard (not included), rotating tray. Extension tray for mouse for right- or left-hand use. Hinged front panel. Mounts on front and rear rack rails. Rear rail extension 6". Black finish. Includes wrist pad.

Model No.	Height	Depth	Width	Load Capacity
KDMS	4.34"	20.00"	19.00"	70 lbs.

**Sliding Latching Shelf:** 16-ga. steel slide-out shelf extends 14.63" and can latch in closed or open position. Measures slightly more than 1U. Black finish.

Model No.	Height	Depth	Width	Load Capacity
SLS	2.50"	14.63"	19.00"	50 lbs.

**Fixed Writing Surface:** 16-ga. steel frame with woodgrain laminate finish. Mounts facing out from rack.

Model No.	Height	Surface Depth	Width	Load Capacity
FWS-215	2U	15.00"	19.00"	30 lbs.

**RMK Shelf:** 14-ga. steel shelf used with non-rackmount equipment up to 17.38"W. Sides fold down for flat shipping and storage. Optional top clamp. Black finish.

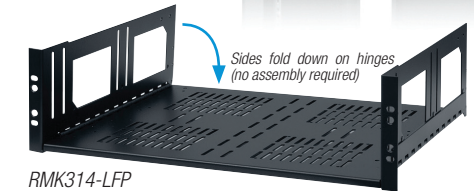
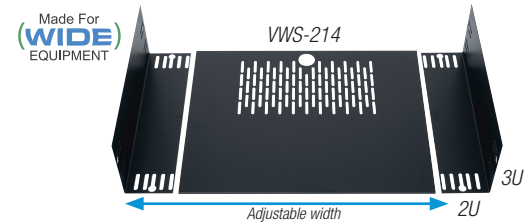
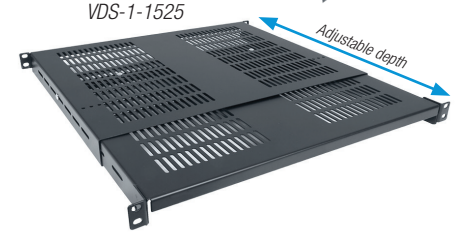
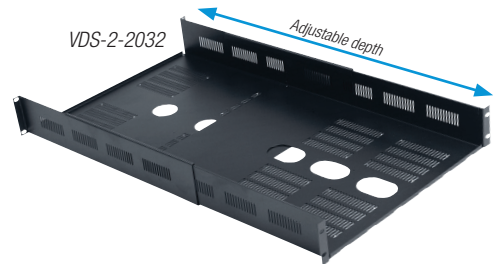
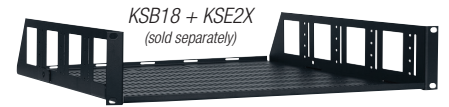
Model No.	Height	Depth	Width	Load Capacity
RMK214-LFP	2U	14.00"	19.00"	50 lbs.
RMK314-LFP	3U	14.00"	19.00"	50 lbs.
RMK218-LFP	2U	18.00"	19.00"	50 lbs.
RMK318-LFP	3U	18.00"	19.00"	50 lbs.

**OPTIONS**

RMK-TCMP	Top clamp
----------	-----------

**Center-Mount Shelf:** Designed for 2-post racks, this 16-ga. steel shelf provides versatile solution for non-rackmount equipment. Black finish.

Model No.	Height	Drawer Depth	Width	Load Capacity
CMS-220	2U	20.00"	19.00"	50 lbs.
CMS-324	3U	24.00"	19.00"	50 lbs.



UDE-314



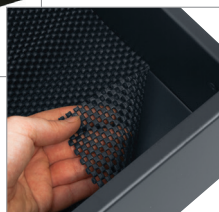
UDEL-314



UDP-314



DFI



CDM

SBL-39



MH4-CD



## DRAWERS

**UDE Series:** Fully-welded 16-ga. steel utility drawer with integral handle has ball-bearing slides and plastic bushing in rear for wire pass-through (up to 1.06" diameter). Mounts to front rack rails on standard E.I.A. spacing. Black finish. Mounting hardware not included.

Model No.	Height	Depth	Overall Depth*	Width	Lock	Load Capacity
UDE-214	2U	14.50"	15.07"	19.00"	---	50 lbs.
UDE-314	3U	14.50"	15.07"	19.00"	---	50 lbs.
UDE-414	4U	14.50"	15.07"	19.00"	---	50 lbs.

\* Overall depth includes handle protrusion.

**UDEL Series:** Fully-welded 16-ga. steel utility drawer with integral handle has ball-bearing slides and plastic bushing in rear for wire pass-through (up to 1.06" diameter). Mounts to front rack rails on standard E.I.A. spacing. Includes keyed lock. Black finish. Mounting hardware not included.

Model No.	Height	Depth	Overall Depth*	Width	Lock	Load Capacity
UDEL-214	2U	14.50"	15.07"	19.00"	Yes	50 lbs.
UDEL-314	3U	14.50"	15.07"	19.00"	Yes	50 lbs.
UDEL-414	4U	14.50"	15.07"	19.00"	Yes	50 lbs.

\* Overall depth includes handle protrusion.

**UDP Series:** Heavy duty, fully-welded, 16-ga. steel utility drawer has ball-bearing slides and plastic bushing in rear for wire pass-through (up to 1.06" diameter). Mounts to front rack rails on standard E.I.A. spacing. Black finish. Includes recessed drawer pull, slam-latch closure, keyed lock for security and perforated mat liner.

Model No.	Height	Depth	Width	Lock	Load Capacity
UDP-214	2U	14.50"	19.00"	Yes	50 lbs.
UDP-314	3U	14.50"	19.00"	Yes	50 lbs.
UDP-414	4U	14.50"	19.00"	Yes	50 lbs.
UDP-614	6U	14.50"	19.00"	Yes	50 lbs.

## DRAWER LINERS

**DFI Series:** Thick die-cut foam allows you to pick-and-pull squares to create custom nests for sensitive electronics, keeping them secure. Includes 0.875" foam base.

Model No.	Drawer Height	Depth	Width
DFI-2	2U	14.00"	15.50"
DFI-3	3U	14.00"	15.50"
DFI-4	4U	14.00"	15.50"

**CDM:** Non-slip perforated drawer mat (included with UDP Series drawers).

Model No.	Depth	Width
CDM	14.00"	15.50"

## STORAGE

**SBL Series:** Fully welded 16-ga. steel locking storage box with front door hinged along bottom mounts to front rack rails using standard E.I.A. spacing. Black finish. Features slam-latch closure and keyed lock.

Model No.	Height	Depth	Width	Lock	Load Capacity
SBL-39	3U	8.99"	19.00"	yes	50 lbs.
SBL-49	4U	8.99"	19.00"	yes	50 lbs.

**Media Holder:** 16-ga. steel media holder with metal dividers for CD storage. Black finish.

Model No.	Height	Depth	Width	Load Capacity
MH4-CD	4U	5.40"	19.00"	42 CD (0.2"W)

## HORIZONTAL-MOUNT

**Brush Strip Panels:** 16-ga. steel panel with tray and brush strip allows cable bundles to be routed between bristles, keeping dust and contaminants at bay while giving an assist to thermal management. Black finish.

Model No.	Description	Depth	Width
CBP-1	1U brush panel	3.00"	19.00"
CBP-2	2U brush Panel	3.00"	19.00"

**Stackable Bars:** 14-ga. steel slotted bars can be used independently or stacked on a horizontal plane to save rack space. A straight bar can be mounted at a right angle to another straight bar for dual-lacing configuration. Bars also serve as support bracing for equipment when used with mid or rear rails. Black finish.

Model No.	Description	Offset	Width
CMBS	Straight bar	---	19.00"
CMBS-2	Offset bar	2.00"	19.00"
CMBS-4	Offset bar	4.00"	19.00"
CMBS-6	Offset bar	6.00"	19.00"

**Stackable Flat Wire:** 11-ga. steel flat wire with smooth rounded edges can be used independently or stacked on a horizontal plane to save rack space while separating cables. Features multiple tiedown slots and holes. Robust design can be used as support bracing for equipment when used with mid or rear rails. Black finish.

Model No.	Description	Offset	Width
CMFW	Straight flat wire	---	19.00"
CMFW-2	Offset flat wire	1.75"	19.00"
CMFW-4	Offset flat wire	4.00"	19.00"

**Steel Rods:** Cable management steel rod with 0.25" diameter. Black finish.

Model No.	Description	Offset	Width
CMR	Straight rod	---	19.00"
CMR2	Offset rod	1.50"	19.00"
CMR4	Offset rod	4.00"	19.00"

**Flex-Clip Panels:** 16-ga. steel panel with plastic flex-clips that rotate individually for horizontal or vertical cable management. Optional steel D-rings on ends for open frame data racks extend beyond rack width for vertical routing. Black finish.

Model No.	Description	D-rings on Ends	Width
CMC-1HV	1U panel, flex-clips	---	19.00"
CMCD-1HV	1U panel, flex-clips	2	19.00"+

**D-Ring Panels:** 16-ga. steel panel with D-rings welded along center and optional D-rings on ends for open frame data racks to route cables vertically (end D-rings extend beyond rack width). For localized cable routing, a single D-ring on a 2U bracket punched on E.I.A. spacing is also available. Black finish.

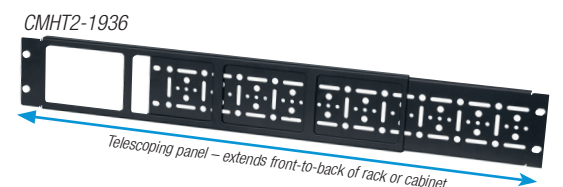
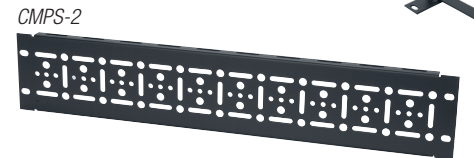
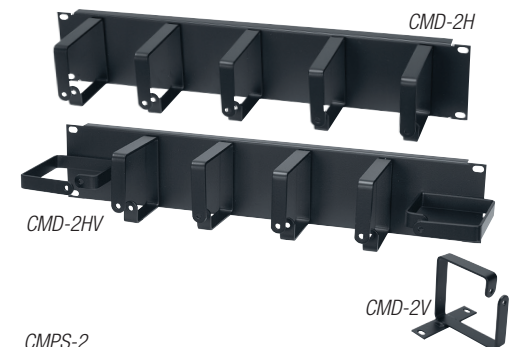
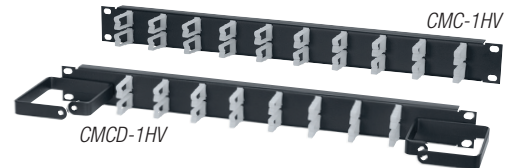
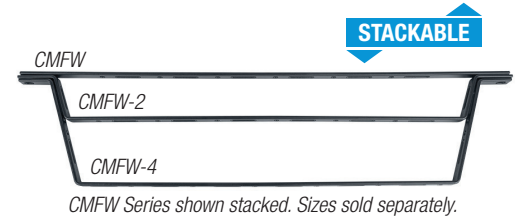
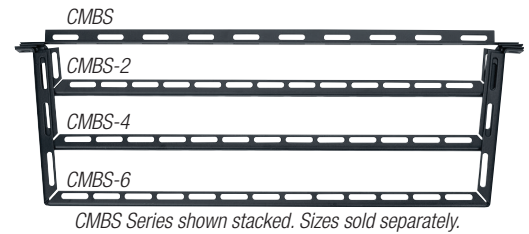
Model No.	Description	D-rings on Ends	Width
CMD-1H	1U panel, D-rings	---	19.00"
CMD-1HV	1U panel, D-rings	2	19.00"+
CMD-2H	2U panel, D-rings	---	19.00"
CMD-2HV	2U panel, D-rings	2	19.00"+
CMD-2V	2U D-ring on bracket	---	0.875"

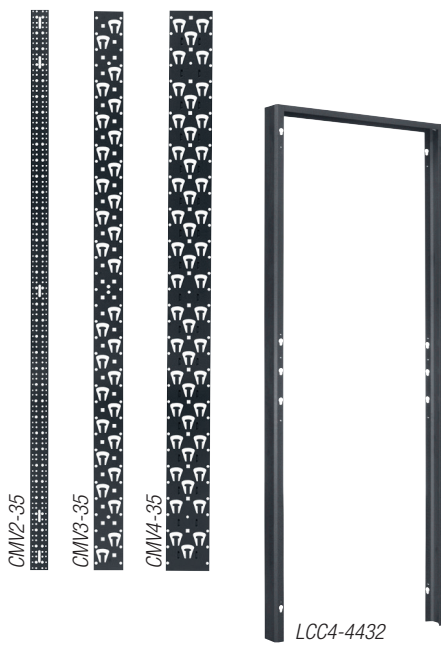
**Slotted Panels:** 16-ga. steel panel with flange and slots for cable lacing. Black finish.

Model No.	Description	Width
CMPS-1	1U slotted panel	19.00"
CMPS-2	2U slotted panel	19.00"

**Telescoping Panels:** 18-ga. steel panel with flange extends to mount front-to-back within a rack, providing a versatile solution for wire and cable management. Black finish.

Model No.	Description	Extension
CMHT1-1730	1U telescoping panel	17.00" - 30.00"
CMHT2-1936	2U telescoping panel	19.00" - 36.00"





## VERTICAL-MOUNT

**Vertical Panels:** Steel panel with multiple lacing slots provides vertical-mount cable management solution. 2"W panels are flat 11-ga. steel; other widths are 16-ga. steel with flanges. Black finish..

Model No.	Height	Width
CMV2-18	18U	2.00"
CMV2-35	35U	2.00"
CMV2-44	44U	2.00"
CMV3-12	12U	3.25"
CMV3-24	24U	3.25"
CMV3-35	35U	3.25"
CMV3-40	40U	3.25"
CMV3-44	44U	3.25"

Model No.	Height	Width
CMV5-24	24U	4.75"
CMV5-35	35U	4.75"
CMV5-40	40U	4.75"
CMV5-44	44U	4.75"

**Cable Chase:** 16-ga. steel cable chase for select racks provides space for wiring between racks or at the end of a multi-bay configuration. Includes bolt-on front, rear and top plus joining hardware. Top has compound knockouts (2"-1"). Black finish. Ships unassembled.

Model No.	Height	Channel Depth	Overall Depth	For Rack Series (Depth)
LCC4-4427	44U	4.00"	27.00"	LGR (27"D)
LCC4-4432	44U	4.00"	32.00"	LGR (32"D)
LCC4-4436	44U	4.00"	36.00"	LGR (36"D)
LCC4-4442	44U	4.00"	42.00"	LGR (42"D)
LXR-4421CC3	44U	3.00"	21.94"	LXR, LVR (21"D)
LXR-4426CC3	44U	3.00"	27.19"	LXR, LVR (26.25"D)

## CABLING AIDS

**Bushings:** Plastic bushings snap into access holes along the (rear) vertical sides of LGR and LSGR Series gangable racks to protect cables running between racks. Black.

Model No.	Description
LGRB-12	Plastic bushings, set of 12

**Cable Wraps:** Velcro cable wraps to organize cables and hold them out of the way during installation. Maximum bundle diameter 1.75". Each wrap measures approximately 8" x 0.5".

Model No.	Description
VCW-12	Cable wraps, set of 12



## CABLE LADDERS & ACCESSORIES

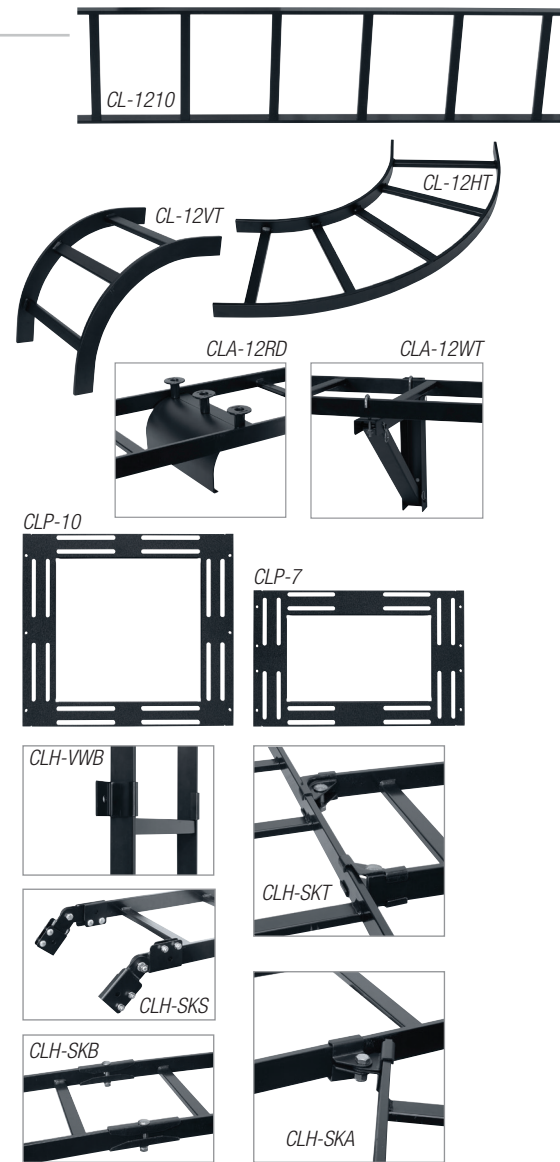
**Cable Ladders:** An assortment of cable ladders and accessories help organize and streamline installations. Black finish. **NOTE:** Be sure to order rack adaptor panels to secure ladders to the rack.

Model No.	Description	Weight	Function
CL-1210	Straight ladder – 12"W x 10'L (approx.)	24.47 lbs.	Straight section
CL-12HT	Horizontal turn ladder – 12"W	8.05 lbs.	90 degree turn with minimum cable bend radius
CL-12VT	Vertical turn ladder (I/O bend) – 12"W	4.8 lbs.	Changes direction of cable ladder
CLA-12RD	Cable radius drop – 12"W	1.90 lbs.	Allows cable exit with proper bend radius
CLA-12WA	Wall angle bracket – 12"W	1.96 lbs.	Provides perpendicular wall support for cable ladder
CLA-12WT	Wall triangle bracket – 12"W	4.15 lbs.	Provides wall support (400 lbs. static load) for cable ladder
CLA-12RRP	Relay rack plate kit – 12"W	3.12 lbs.	Secures cable ladder to top of 3" channel relay rack
CL-1810	Straight ladder – 18"W x 10'L (approx.)	27.75 lbs.	Straight section
CL-18HT	Horizontal turn ladder – 18"W	10.50 lbs.	90 degree turn with minimum cable bend radius
CL-18VT	Vertical turn ladder (I/O bend) – 18"W	5.6 lbs.	Changes direction of cable ladder
CLA-18RD	Cable radius drop – 18"W	2.84 lbs.	Allows cable exit with proper bend radius
CLA-18WA	Wall angle bracket – 18"W	2.70 lbs.	Provides perpendicular wall support for cable ladder
CLA-18WT	Wall triangle bracket – 18"W	5.92 lbs.	Provides wall support (400 lbs. static load) for cable ladder
CLA-18RRP	Relay rack plate kit – 18"W	4.20 lbs.	Secures cable ladder to top of 3" channel relay rack

### ADDITIONAL HARDWARE

CLP-7	Rack adaptor panel, 7U	4 lbs.	Mounts cable ladder to 7U opening in rack top
CLP-10	Rack adaptor panel, 10U	4 lbs.	Mounts cable ladder to 10U opening in rack top
CLH-SK46	Stand-off elevation kit (4"-6")	12 lbs.	Elevates cable ladder above rack (4"-6")
CLH-JB3	J-bolt kit, 5/16" x 3"	0.31 lbs.	Holds cable ladder to rack
CLH-VWB	Vertical wall bracket	0.56 lbs.	Anchors cable ladder to wall
CLH-CK	Ceiling-mount kit	0.88 lbs.	Suspends cable ladder from ceiling
CLH-FB	Floor-mount brackets	3.22 lbs.	Mounts cable ladder to floor
CLH-SKB	Butt splice kit	0.47 lbs.	Fastens cable ladder sections end-to-end
CLH-SKS	Swivel / adjustable splice kit	1.90 lbs.	Fastens cable ladder sections providing adjustable bend
CLH-SKT	T-junction bracket kit	0.68 lbs.	Fastens cable ladder sections at 90 degree intersection
CLH-SKA	Adjustable splice kit (special)*	2 lbs.	Fastens cable ladder sections creating horizontal intersection
CLH-GSK	Grounding strap kit	0.25 lbs.	Provides grounding across cable ladder
CLH-EC	Ladder end caps (1 pr.)	0.35 lbs.	Covers end of cable ladder

\* Installer may cut ladder ends at special angles to fit around an obstacle



## THERMAL MANAGEMENT

### FAN PANELS WITH UNIVERSAL POWER SUPPLY

**FDC Series:** Super quiet fans with universal (100–240VAC) input voltage, 6-ft. cord and four plug adaptors for North America, Central Europe, the U.K. and Australia/New Zealand/South Pacific. Includes thermostat probe which increases and decreases fan speed as temperature reaches set points. UL Listed power supply. Black finish.

Model No.	VAC	Description	Qty. Fans	Fan Diameter	Total Airflow	Noise Rating	Thermo Probe
FDC2-2T	100-240	19"W x 2U panel	2	3.15"	52cfm	26dBA	Yes
FDC4-2T	100-240	19"W x 2U panel	4	3.15"	104cfm	29dBA	Yes
FDC4-1HR	100-240	10.375"W x 1U	4	1.57"	36cfm	38dBA	---
FDC4-1HRT	100-240	10.375"W x 1U	4	1.57"	36cfm	38dBA	Yes

**FDC1 Fan Kit Series:** STAND-ALONE fan same as FDC Series above. MASTER FAN is similar to the stand-alone unit but with an additional power output, which enables it to connect/control a secondary fan. SECONDARY FAN works only with a master fan. Instead of a power supply, the secondary fan features a power input with 8 ft. extension. It also features a power output to connect to another secondary fan if desired. Fans mount anywhere along Lowell's rack vents. Black finish.

Model No.	VAC	Description	Qty. Fans	Fan Diameter	Total Airflow	Noise Rating	Thermo Probe
FDC1-KITT	100-240	Single fan kit	1	4.70"	73cfm	33dBA	Yes
FDC1-KITT-M	100-240	Master fan	1	4.70"	73cfm	33dBA	Yes
FDC1-KIT-S*	---	Secondary fan	1	4.70"	73cfm	33dBA	---

### BUNDLES

FDC1-KITT-MS	Bundle: 1 master fan and 1 secondary fan
FDC1-KITT-MSS	Bundle: 1 master fan and 2 secondary fans

\* Works only with a master fan





FW3-3

## WHISPER FAN PANELS

**FW Series:** Whisper fans in a 19" panel, rear door panel, or single fan kit. The rear door panel and fan kits mount anywhere along Lowell rack vents. Choose standard cord (Std.) or thermo-cord (Thermo) with built in thermostat to control fan activation. Black finish.

Model No.	VAC	Description	Qty. Fans	Fan Diameter	Total Airflow	Noise Rating	Cord
FW2-3	120	19"W x 3U panel	2	4.70"	100cfm	31dBA	Std.
FW2-3T	120	19"W x 3U panel	2	4.70"	100cfm	31dBA	Thermo
FW3-3	120	19"W x 3U panel	3	4.70"	150cfm	33dBA	Std.
FW3-3T	120	19"W x 3U panel	3	4.70"	150cfm	33dBA	Thermo
FW4-7	120	19"W x 7U panel	4	4.70"	200cfm	34dBA	Std.
FW4-7T	120	19"W x 7U panel	4	4.70"	200cfm	34dBA	Thermo
FW2-RD	120	Rear door panel	2	4.70"	100cfm	31dBA	Std.
FW2-RDT	120	Rear door panel	2	4.70"	100cfm	31dBA	Thermo
FW1-KIT	120	Single fan kit	1	4.70"	50cfm	28dBA	Std.
FW1-KITT	120	Single fan kit	1	4.70"	50cfm	28dBA	Thermo

### OPTIONS

FW-FF	Optional fan filter for whisper fans
-------	--------------------------------------

**FW2 Thermal Management Kit:** Includes two whisper fans with guards, and set of three magnetic vent blockers. Choose standard cord or thermo-cord with built in thermostat. Black finish. For rack series: LWR.

Model No.	VAC	Description	Qty. Fans	Fan Diameter	Total Airflow	Noise Rating	Cord
FW2-KIT-VB	120	Thermal management kit for LWR Series	2	4.70"	50cfm	28dBA	Std.
FW2-KITT-VB	120	Thermal management kit for LWR Series	2	4.70"	50cfm	28dBA	Thermo

## TURBO FAN PANELS

**FT Series:** Single turbo fan in 16-ga. steel 19" panel provides powerful cooling for rackmounted equipment. Includes fan guards. Choose standard cord or thermo-cord. UL Listed. CE approved. Black finish.

Model No.	VAC	Description	Qty. Fans	Fan Diameter	Total Airflow	Noise Rating	Cord
FT1-7	115	19"W x 7U panel	1	10.00"	550cfm	50.8dBA	Std.
FT1-7T	115	19"W x 7U panel	1	10.00"	550cfm	50.8dBA	Thermo

## BLOWER FANS

**BDC4 Series:** Rackmount panel with four blower fans. Optional thermostat-probe automatically activates/deactivates fans according to ambient temperature. Black finish.

Model No.	VAC	Description	Blower Qty.	Blower Diameter	Total Airflow	Noise Rating	Thermo-Probe
BDC4-1	100-240	19"W x 1U panel	4	3.50"	90cfm	32dBA	---
BDC4-1T	100-240	19"W x 1U panel	4	3.50"	90cfm	32dBA	Yes

**KOP-B Series:** 10" panel with dual blower fans replaces rear KO panel in most Lowell racks (see specs). Optional thermostat-probe automatically activates/deactivates fans according to ambient temperature. Black finish.

Model No.	VAC	Description	Blower Qty.	Blower Diameter	Total Airflow	Noise Rating	Thermo-Probe
KOP-B	100-240	10"W panel	2	3.50"	45cfm	29dBA	---
KOP-BT	100-240	10"W panel	2	3.50"	45cfm	29dBA	Yes

## RACK THERMOSTAT

**FTC-1:** Thermostat controls rack fans for efficient operation. Features, 15A duplex receptacle, and 6-ft. cord. UL Listed (T-stat).

Model No.	Description	Size
FTC-1	125VAC thermostat	10.00" x 3.00" x 3.00"

## MAGNETIC VENT BLOCKERS

**MVB Series:** Magnetic strips cover rack vents to aid airflow when fans are added for active thermal management. Field trimmable.

Model No.	Quantity	For Rack
MVBLGR	1 front, 1 rear	LGR Series
MVBLWR	1 front, 2 side	LWR (19"D or 23"D)
MVBLWBR	1 front, 2 side	LWBR Series
MVB22	1 front, 2 side, 1 rear	LER (22"D)
MVB27	1 front, 2 side, 1 rear	LER (27"D)
MVB32	1 front, 2 side, 1 rear	LER (32"D)



FW-FF



FW1-KIT



FW2-KITT-VB

FT1-7



BDC4-1



KOP-B



FTC-1



MVB



## MOBILE BASES

**LMB Series:** Base mounts inside rack frame creating a platform flush with bottom rack space—ideal for heavy equipment mounted in lowest rack position. Includes 3.00" swivel casters and hardware. Model numbers ending with "F" have special casters made to protect fine floors like wood, marble or tile. For rack series: LER, LFR, LGR.

Model No.	Depth	Width	Height	Material	Increases Rack Height	Total Load Capacity
LMB-27	26.75"	22.81"	3.00"	14-Gauge Steel	1.25"	1400 lbs.
LMB-32	31.75"	22.81"	3.00"	14-Gauge Steel	1.25"	1400 lbs.
LMB-36	35.75"	22.81"	3.00"	14-Gauge Steel	1.25"	1400 lbs.
LMB-42	41.75"	22.81"	3.00"	14-Gauge Steel	1.25"	1400 lbs.
LMB-27F	26.75"	22.81"	3.00"	14-Gauge Steel	1.50"	800 lbs.
LMB-32F	31.75"	22.81"	3.00"	14-Gauge Steel	1.50"	800 lbs.
LMB-36F	35.75"	22.81"	3.00"	14-Gauge Steel	1.50"	800 lbs.



LMB-27F

**LMNB Series:** Base mounts inside rack frame creating a platform flush with bottom rack space—ideal for heavy equipment mounted in lowest rack position. Includes 3.00" swivel casters and hardware. For rack series: LGNR, LGVR.

Model No.	Depth	Width	Height	Material	Increases Rack Height	Total Load Capacity
LMNB-27	26.75"	21.75"	3.00"	14-Gauge Steel	1.25"	1400 lbs.
LMNB-32	31.75"	21.75"	3.00"	14-Gauge Steel	1.25"	1400 lbs.
LMNB-36	35.75"	21.75"	3.00"	14-Gauge Steel	1.25"	1400 lbs.



LMNB-32

**LMSB Series:** Base mounts under rack frame. Casters are set to the perimeter to enhance stability of a loaded rack. Includes 3.00" swivel casters (two locking, two non-locking). Model ending with "FL" has special casters made to protect fine floors like wood, marble or tile. For rack series: LER, LFR, LGR (with 22" depth).

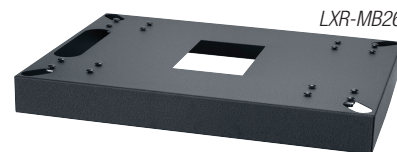
Model No.	Depth	Width	Height	Material	Increases Rack Height	Total Load Capacity
LMSB-22	21.88"	22.31"	4.06"	14-Gauge Steel	4.06"	1400 lbs.
LMSB-22FL	21.88"	22.31"	4.33"	14-Gauge Steel	4.33"	800 lbs.



LMSB-22

**LXR-MB Series:** Skirted base mounts under rack frame. Includes 3.00" non-locking swivel casters. Models ending with "F" have special casters made to protect fine floors like wood, marble or tile. For slim rack series: LXR and LVR (with 21" or 26.25" depth setting).

Model No.	Depth	Width	Height	Material	Increases Rack Height	Total Load Capacity
LXR-MB21	19.00"	21.00"	3.95"	16-Gauge Steel	3.95"	500 lbs.
LXR-MB26	19.00"	26.00"	4.06"	16-Gauge Steel	4.06"	620 lbs.
LXR-MB21F	19.00"	21.00"	3.95"	16-Gauge Steel	3.95"	500 lbs.
LXR-MB26F	19.00"	26.00"	4.06"	16-Gauge Steel	4.06"	620 lbs.

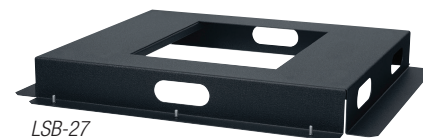


LXR-MB26

## STATIONARY BASES

**LSB Series:** Base mounts inside rack frame creating a platform flush with bottom rack space—ideal for heavy equipment mounted in lowest rack position. Does not increase rack height. For rack series: LER, LFR, LGR.

Model No.	Depth	Width	Height	Material
LSB-22	20.38"	22.81"	3.00"	16-Gauge Steel
LSB-27	26.75"	22.81"	3.00"	16-Gauge Steel
LSB-32	31.75"	22.81"	3.00"	16-Gauge Steel
LSB-36	35.75"	22.81"	3.00"	16-Gauge Steel
LSB-42	41.75"	22.81"	3.00"	16-Gauge Steel



LSB-27

**LSSB Series:** Shallow base mounts inside rack frame creating a sub-floor 2.25" below bottom rack space—ideal to mount accessory devices on floor of installation. Does not increase rack height. For rack series: LER, LFR, LGR (with 22" or 27" depth).

Model No.	Depth	Width	Height	Material
LSSB-22	20.38"	22.81"	0.75"	16-Gauge Steel
LSSB-27	26.75"	22.81"	0.75"	16-Gauge Steel



LSSB-22

## MOUNTING RAILS

**RRD Series:** 11-ga. steel with black finish and round holes tapped 10-32. Printed RU scale facilitates set-up. Sold in pairs. Mounting hardware included. For rack series: LER, LFR, LGR, LPR, LSER, LSGR, LWBR, LWR.

Model No.	Height	Material	Mtg Hardware
RRD-7	7U	11-Gauge Steel	Yes
RRD-10	10U	11-Gauge Steel	Yes
RRD-12	12U	11-Gauge Steel	Yes
RRD-14	14U	11-Gauge Steel	Yes
RRD-16	16U	11-Gauge Steel	Yes
RRD-18	18U	11-Gauge Steel	Yes
RRD-21	21U	11-Gauge Steel	Yes
RRD-24	24U	11-Gauge Steel	Yes
RRD-35	35U	11-Gauge Steel	Yes
RRD-40	40U	11-Gauge Steel	Yes
RRD-44	44U	11-Gauge Steel	Yes

**RRN Series:** 11-ga. steel with black finish and round holes tapped 10-32. Printed RU scale facilitates set-up. Sold in pairs. Mounting hardware included. For rack series: LGNR and LGVR.

Model No.	Height	Material	Mtg Hardware
RRN-24	24U	11-Gauge Steel	Yes
RRN-37	37U	11-Gauge Steel	Yes
RRN-40	40U	11-Gauge Steel	Yes
RRN-44	44U	11-Gauge Steel	Yes

**RRNT-54:** 11-ga. steel with black finish and round holes tapped 10-32. Sold in pairs. Mounting hardware included. For rack series LGTR.

Model No.	Height	Material	Mtg Hardware
RRNT-54	54U	11-Gauge Steel	Yes

**RRTF Series:** 11-ga. steel with black finish and round holes tapped 10-32. Printed RU scale facilitates set-up. Sold in pairs. Mounting hardware included. For rack series: LDSR, LDTR, LWER, LWSR.

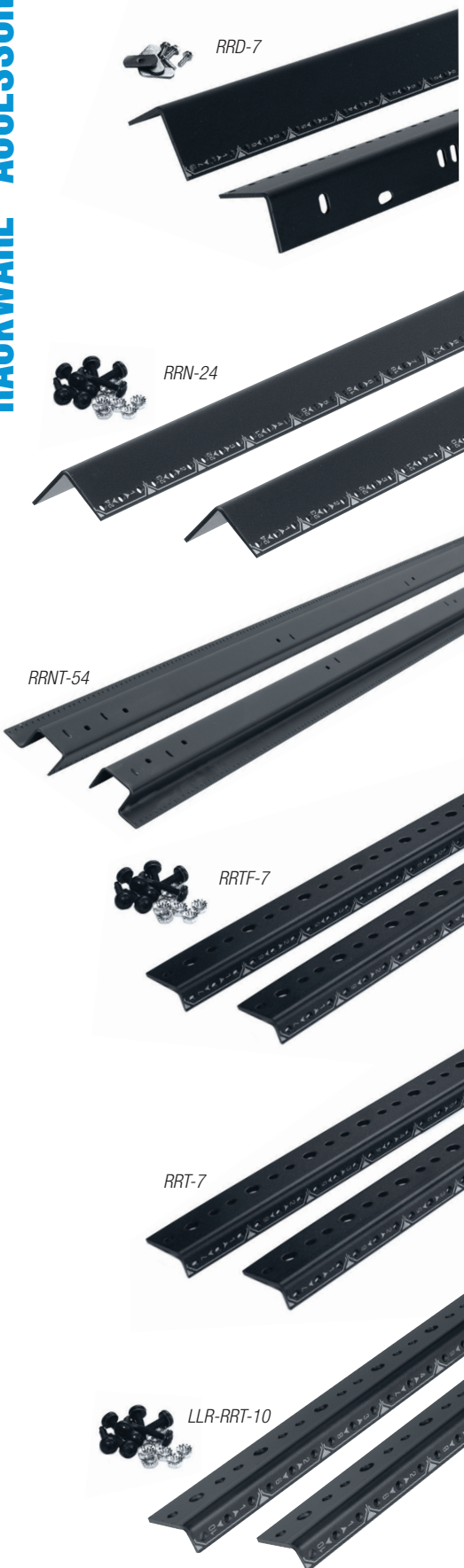
Model No.	Height	Material	Mtg Hardware
RRTF-7	7U	11-Gauge Steel	Yes
RRTF-10	10U	11-Gauge Steel	Yes
RRTF-12	12U	11-Gauge Steel	Yes
RRTF-14	14U	11-Gauge Steel	Yes
RRTF-16	16U	11-Gauge Steel	Yes

**RRT Series:** Same as RRTF Series above but **mounting hardware is not included.** For custom millwork.

Model No.	Height	Material	Mtg Hardware
RRT-7	7U	11-Gauge Steel	---
RRT-10	10U	11-Gauge Steel	---
RRT-12	12U	11-Gauge Steel	---
RRT-14	14U	11-Gauge Steel	---
RRT-16	16U	11-Gauge Steel	---
RRT-21	21U	11-Gauge Steel	---
RRT-24	24U	11-Gauge Steel	---
RRT-28	28U	11-Gauge Steel	---
RRT-30	30U	11-Gauge Steel	---
RRT-32	32U	11-Gauge Steel	---
RRT-40	40U	11-Gauge Steel	---
RRT-46	46U	11-Gauge Steel	---

**LLR-RRT Series:** 11-ga. steel with black finish and round holes tapped 10-32. Printed RU scale facilitates set-up. Sold in pairs. Mounting hardware included. For rack series: LLR.

Model No.	Height	Material	Mtg Hardware
LLR-RRT-10	10U	11-Gauge Steel	Yes
LLR-RRT-12	12U	11-Gauge Steel	Yes
LLR-RRT-16	16U	11-Gauge Steel	Yes
LLR-RRT-21	21U	11-Gauge Steel	Yes



**LHR-RRT Series:** 11-ga. steel with black finish and round holes tapped 10-32. Printed RU scale facilitates set-up. Sold in pairs. Mounting hardware included. For inner pull-out rack of rack series: LHR.

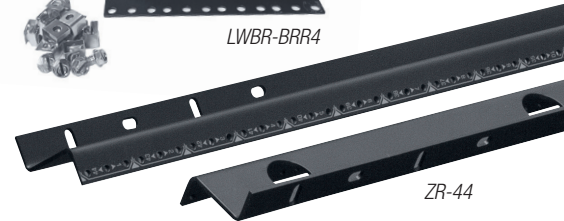
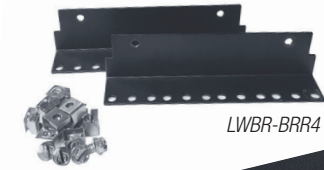
Model No.	Height	Material	Mtg Hardware
LHR-RRT-24	24U	11-Gauge Steel	Yes
LHR-RRT-35	35U	11-Gauge Steel	Yes
LHR-RRT-44	44U	11-Gauge Steel	Yes

**LWBR-BRR4:** 11-ga. steel with black finish and round holes tapped 10-32. Made to fit base of LWBR series rack, to add rear support to UPS mounted there (sold separately). Sold in pairs. 10-32 basket clips included.

Model No.	Height	Material	Mtg Hardware
LWBR-BRR4	4U	11-Gauge Steel	Yes

**Z-Rails:** 11-ga. steel with black finish, threaded 10-32 holes and vertical array of holes for cabling. Z-rails fit flush to standard mounting rails allowing devices to be side mounted along the depth of a rack. Sold in pairs. Mounting hardware included. ZR-44 for use with LER and LGR racks. ZRN-44 for use with LGNR and LGVR racks.

Model No.	Height	Material	Mtg Hardware
ZR-44	44U	11-Gauge Steel	Yes
ZRN-44	44U	11-Gauge Steel	Yes



**NEW**  
**NEW**

## SPECIALTY TOPS & COVERS

### LAMINATE TOP

**LGT Series:** Graphite Grey laminate-covered top features rubber edge molding. Includes mounting hardware. For rack series LER, LPR, or LGR with appropriate depth.

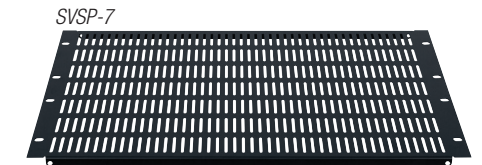
Model No.	Depth	Width	Height	For Use With Rack Depth
LGT-22	24.06"	24.69"	1.00"	22.00"
LGT-27	29.06"	24.69"	1.00"	27.00"



### STEEL VENTED TOP PANEL

**SVSP Series:** 18-gauge steel slotted top panel for open top racks. Black finish.

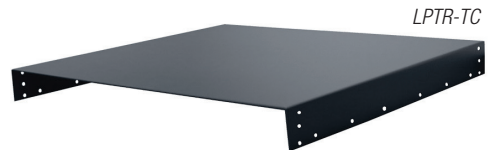
Model No.	Height	Width
SVSP-3	3U	19.00"
SVSP-4	4U	19.00"
SVSP-7	7U	19.00"



### STEEL TOP

**LPTR-TC:** 16-gauge steel top for the LPTR Series Pull & Turn rack. Black finish.

Model No.	Description	Depth	Width	Height
LPTR-TC	Steel top cover	16.35"	18.81"	1.75"



**HUB-CVR:** Steel cover for use with HUB Series wall-mount brackets protects cables while serving as a convenient shelf. Black finish.

Model No.	Description	Depth	Width	Height
HUB-CVR	Steel top cover	6"	29.29"	1.13"



**PFR-TC Series:** Steel cover for use with PFR Series wall-mount racks (12" and 18" deep models). Black finish.

Model No.	Description
PFR-TC12	Steel top cover for 12"D PFR racks
PFR-TC18	Steel top cover for 18"D PFR racks



## DISPLAY MOUNT

### DISPLAY MOUNT FOR RACKS

**DMR-19:** Adjustable-depth display mount for 19 inch E.I.A. two-post and four-post racks, is made to hold a flat panel display or LCD monitor that features a standard VESA 75mm or 100mm hole pattern.

Model No.	Depth	Width	Height	Load Capacity
DMR-19	5.20"	19"	6.97"	40 lbs.





LFD Series

## FRONT DOOR

**LFD Series:** Surface-mount front door. 180° swing. Mounts left or right. Field-changeable. 20"W x 1"D. Features recessed handle, keyed lock, beveled corners. Black finish. For rack series: LDTR, LER, LFR, LGR, LGNR, LGVR, LGTR, LPR, LSER, LSGR, LWBR, LWR, LWSR.

Model No.	Height	Door Style	Model No.	Height	Door Style	Model No.	Height	Door Style
LFD-7	7U	Solid Steel	LFD-7P	7U	Smoked Plexiglass	LFD-7FV	7U	Fully-Vented
LFD-10	10U	Solid Steel	LFD-10P	10U	Smoked Plexiglass	LFD-10FV	10U	Fully-Vented
LFD-12	12U	Solid Steel	LFD-12P	12U	Smoked Plexiglass	LFD-12FV	12U	Fully-Vented
LFD-14	14U	Solid Steel	LFD-14P	14U	Smoked Plexiglass	LFD-14FV	14U	Fully-Vented
LFD-16	16U	Solid Steel	LFD-16P	16U	Smoked Plexiglass	LFD-16FV	16U	Fully-Vented
LFD-18	18U	Solid Steel	LFD-18P	18U	Smoked Plexiglass	LFD-18FV	18U	Fully-Vented
LFD-21	21U	Solid Steel	LFD-21P	21U	Smoked Plexiglass	LFD-21FV	21U	Fully-Vented
LFD-24	24U	Solid Steel	LFD-24P	24U	Smoked Plexiglass	LFD-24FV	24U	Fully-Vented
LFD-35	35U	Solid Steel	LFD-35P	35U	Smoked Plexiglass	LFD-35FV	35U	Fully-Vented
LFD-37	37U	Solid Steel	LFD-37P	37U	Smoked Plexiglass	LFD-37FV	37U	Fully-Vented
LFD-40	40U	Solid Steel	LFD-40P	40U	Smoked Plexiglass	LFD-40FV	40U	Fully-Vented
LFD-44	44U	Solid Steel	LFD-44P	44U	Smoked Plexiglass	LFD-44FV	44U	Fully-Vented
LFD-54	54U	Solid Steel						

LXR-FD Series

LHR-FD Series



**LXR-FD Series:** Surface-mount front door for Lowell slim frame racks. Mounts left or right. Field-changeable. 20.50"W x 1.38"D. Features recessed handle, keyed lock. Black finish. For slim frame rack series: LXR, LVR.

Model No.	Height	Door Style	Model No.	Height	Door Style
LXR-FD8	8U	Solid Steel	LXR-FD8P	8U	Smoked Plexiglass
LXR-FD14	14U	Solid Steel	LXR-FD14P	14U	Smoked Plexiglass
LXR-FD22	22U	Solid Steel	LXR-FD22P	22U	Smoked Plexiglass
LXR-FD30	30U	Solid Steel	LXR-FD30P	30U	Smoked Plexiglass
LXR-FD38	38U	Solid Steel	LXR-FD38P	38U	Smoked Plexiglass
LXR-FD44	44U	Solid Steel	LXR-FD44P	44U	Smoked Plexiglass

**LHR-FD Series:** Surface-mount front door for Lowell host racks. Mounts left or right. Field-changeable. 21.75"W x 2.50"D. Features recessed handle, keyed lock. Black finish. For host rack series LHR.

Model No.	Height	Door Style	Model No.	Height	Door Style
LHR-FD24	24U	Solid Steel	LHR-FD24P	24U	Smoked Plexiglass
LHR-FD35	35U	Solid Steel	LHR-FD35P	35U	Smoked Plexiglass
LHR-FD44	44U	Solid Steel	LHR-FD44P	44U	Smoked Plexiglass

**LWBR-BD4:** Solid steel door for support base of LWBR rack series. Black finish.

Model No.	Height	Description
LWBR-BD4	4U	Solid steel door for support base of LWBR rack series

PFR-FP



## FRONT COVER PANEL / PLATE

**PFR-FP Series:** Steel front panel. Black finish. For rack series: PFR.

Model No.	Height	Description
PFR-FP6	6U	Front panel for 6U PFR racks
PFR-FP8	8U	Front panel for 8U PFR racks

**IWB(K)-CVR Series:** Steel cover plate for in-wall boxes includes cable exits and vents. White finish. Cover mounts with pins. For in-wall box series: IWB, IWBK.

Model No.	Description
IWB-914-CVR	Steel cover plate mounts to in-wall box # IWB-914 with two pins
IWB-1414-CVR	Steel cover plate mounts to in-wall box # IWB-1414 with two pins
IWB-2214-CVR	Steel cover plate mounts to in-wall box # IWB-2214 with two pins
IWBK-1414-CVR	Steel cover plate mounts to in-wall box # IWBK-1414 with four pins

IWB-2214-CVR



IWBK-1414-CVR



## DUAL-DOOR FRAME

**LDDF Series:** Steel frame surface-mounts to left or right hinge on rack front to accept two short doors in a Dutch door arrangement, enabling equipment to be secured in separate locations in a single rack installation. The 1"D frame can be added to an existing installation. Black finish. For rack series: LDTR, LER, LFR, LGR, LGNR, LGVR, LPR, LSER, LSGR, LWBR, LWR, LWSR. Order LFD Series doors separately.

Model No.	Height	For Use With
LDDF-21	21U	7U top door + 14U bottom door
LDDF-24	24U	10U top door + 14U bottom door
LDDF-35	35U	14U top door + 21U bottom door
LDDF-40	40U	16U top door + 24U bottom door
LDDF-44	44U	21U top door + 24U bottom door

## REAR DOOR & ACCESS COVERS

**LRD-FV Series:** Recessed rear door. Mounts left or right with spring-loaded hinge pins. Field changeable, no drilling. Includes keyed lock. Optional thumb cam latch (TLK) for keyless entry available. Black finish. For rack series: LER, LGR, LSER, LSGR, LPR.

Model No.	Height	Door Style
LRD-35FV	35U	Fully-Vented
LRD-40FV	40U	Fully-Vented
LRD-44FV	44U	Fully-Vented

**LRND-FV Series:** Recessed rear door for narrow 22"W racks. Mounts left or right with spring-loaded hinge pins. Field changeable, no drilling. Black finish. For rack series: LGNR, LGVR, LGTR.

Model No.	Height	Door Style
LRND-40FV	40U	Fully-Vented
LRND-44FV	44U	Fully-Vented
LRND-54FV	54U	Fully-Vented

**LDTR-RAC Series:** Rear access cover for racks in LDTR and LDSR series. Black finish.

Model No.	Height	Description
LDTR-RAC7	7U	Solid steel rear access cover with cable ports at bottom, opens from top with keyed lock
LDTR-RAC10	10U	Solid steel rear access cover with cable ports at bottom, opens from top with keyed lock
LDTR-RAC12	12U	Solid steel rear access cover with cable ports at bottom, opens from top with keyed lock
LDTR-RAC14	14U	Solid steel rear access cover with cable ports at bottom, opens from top with keyed lock
LDTR-RAC16	16U	Solid steel rear access cover with cable ports at bottom, opens from top with keyed lock

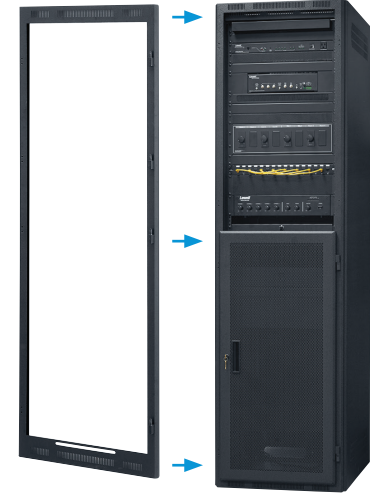
**LHR-RAC Series:** Rear access cover for LHR rack series. Black finish.

Model No.	Height	Description
LHR-RAC24	24U	Solid steel rear access cover opens from top with keyed lock
LHR-RAC35	35U	Solid steel rear access cover opens from top with keyed lock
LHR-RAC44	44U	Solid steel rear access cover opens from top with keyed lock

**LXR-RAC Series:** Rear access cover for LXR and LVR rack series. Black finish.

Model No.	Height	Description
LXR-RAC8	8U	Solid steel rear access cover, opens from top with keyed lock
LXR-RAC14	14U	Solid steel rear access cover, opens from top with keyed lock
LXR-RAC22	22U	Solid steel rear access cover, opens from top with keyed lock
LXR-RAC30	30U	Solid steel rear access cover, opens from top with keyed lock
LXR-RAC38	38U	Solid steel rear access cover, opens from top with keyed lock
LXR-RAC44	44U	Solid steel rear access cover, opens from top with keyed lock
LXR-RAC8V	8U	Steel rear access cover with top/bottom vents, opens from top with keyed lock
LXR-RAC22V	22U	Steel rear access cover with top/bottom vents, opens from top with keyed lock
LXR-RAC30V	30U	Steel rear access cover with top/bottom vents, opens from top with keyed lock
LXR-RAC38V	38U	Steel rear access cover, with top/bottom vents, opens from top with keyed lock
LXR-RAC44V	44U	Steel rear access cover with top/bottom vents, opens from top with keyed lock

LDDF-35



LDDF mounted to LER rack with a short LDF fully vented door on bottom, open top.

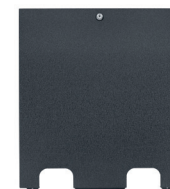
LRD-44FV



LRND-44FV



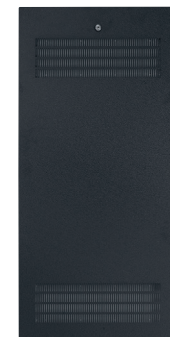
LDTR-RAC10

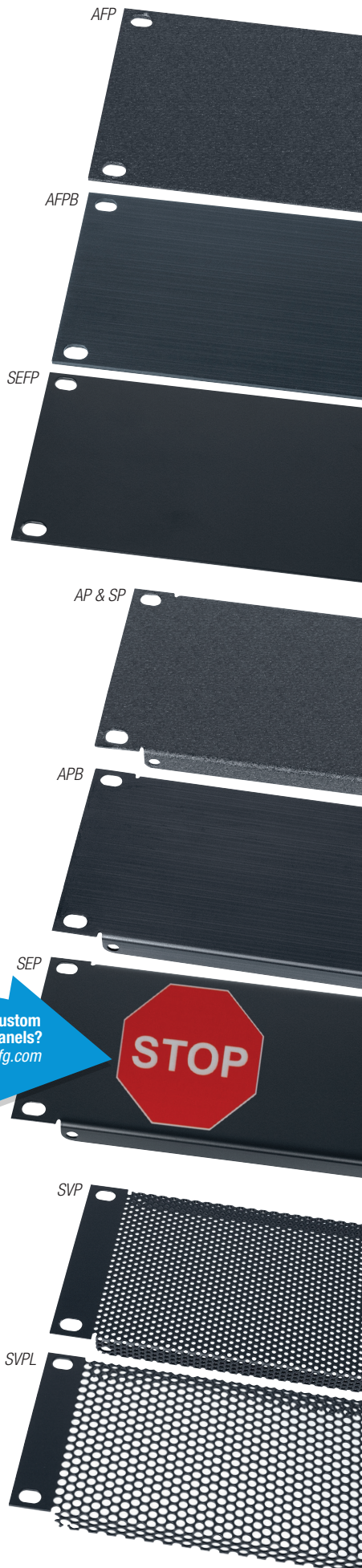


LHR-RAC35



LXR-RAC22





## BLANK PANELS

**Flat:** Aluminum or steel rackmount panel.

Model No.	Height	Width	Material	Finish
AFP-1*	1U	19.00"	0.125" Aluminum	Black Wrinkle
AFP-2*	2U	19.00"	0.125" Aluminum	Black Wrinkle
AFP-3*	3U	19.00"	0.125" Aluminum	Black Wrinkle
AFP-4*	4U	19.00"	0.125" Aluminum	Black Wrinkle
AFP-5	5U	19.00"	0.125" Aluminum	Black Wrinkle
AFP-6	6U	19.00"	0.125" Aluminum	Black Wrinkle
AFPB-1	1U	19.00"	0.125" Aluminum	Brushed Black Anodized
AFPB-2	2U	19.00"	0.125" Aluminum	Brushed Black Anodized
AFPB-3	3U	19.00"	0.125" Aluminum	Brushed Black Anodized
AFPB-4	4U	19.00"	0.125" Aluminum	Brushed Black Anodized
SEFP-1*	1U	19.00"	14-Gauge Steel	Black Semi-Gloss
SEFP-2*	2U	19.00"	14-Gauge Steel	Black Semi-Gloss
SEFP-3*	3U	19.00"	14-Gauge Steel	Black Semi-Gloss
SEFP-4*	4U	19.00"	14-Gauge Steel	Black Semi-Gloss
SEFP-5	5U	19.00"	14-Gauge Steel	Black Semi-Gloss
SEFP-6	6U	19.00"	14-Gauge Steel	Black Semi-Gloss

\* Available in multi-pack carton. See spec sheet for details.

**Formed:** Aluminum or steel rackmount panel w/formed flange.

Model No.	Height	Width	Material	Finish
AP-1*	1U	19.00"	0.050" Aluminum	Black Wrinkle
AP-2*	2U	19.00"	0.050" Aluminum	Black Wrinkle
AP-3*	3U	19.00"	0.050" Aluminum	Black Wrinkle
AP-4*	4U	19.00"	0.050" Aluminum	Black Wrinkle
AP-5	5U	19.00"	0.050" Aluminum	Black Wrinkle
AP-6	6U	19.00"	0.050" Aluminum	Black Wrinkle
APB-1	1U	19.00"	0.050" Aluminum	Brushed Black Anodized
APB-2	2U	19.00"	0.050" Aluminum	Brushed Black Anodized
APB-3	3U	19.00"	0.050" Aluminum	Brushed Black Anodized
APB-4	4U	19.00"	0.050" Aluminum	Brushed Black Anodized
SEP-03	1/3U	19.00"	18-Gauge Steel	Black Semi-Gloss
SEP-05	1/2U	19.00"	18-Gauge Steel	Black Semi-Gloss
SEP-1*	1U	19.00"	18-Gauge Steel	Black Semi-Gloss
SEP-2*	2U	19.00"	18-Gauge Steel	Black Semi-Gloss
SEP-3*	3U	19.00"	18-Gauge Steel	Black Semi-Gloss
SEP-4*	4U	19.00"	18-Gauge Steel	Black Semi-Gloss
SEP-5	5U	19.00"	18-Gauge Steel	Black Semi-Gloss
SEP-6	6U	19.00"	18-Gauge Steel	Black Semi-Gloss
SEPH-1	1U	10.40"	18-Gauge Steel	Black Semi-Gloss
SEPH-2	2U	10.40"	18-Gauge Steel	Black Semi-Gloss
SP-1*	1U	19.00"	18-Gauge Steel	Black Wrinkle
SP-2*	2U	19.00"	18-Gauge Steel	Black Wrinkle
SP-3*	3U	19.00"	18-Gauge Steel	Black Wrinkle
SP-4*	4U	19.00"	18-Gauge Steel	Black Wrinkle
SP-5	5U	19.00"	18-Gauge Steel	Black Wrinkle
SP-6	6U	19.00"	18-Gauge Steel	Black Wrinkle
SP-7	7U	19.00"	18-Gauge Steel	Black Wrinkle

\* Available in multi-pack carton. See spec sheet for details.

## VENT PANELS

**Staggered Holes:** Steel rackmount panel w/staggered hole vent pattern and formed flange. 35% or 63% open.

Model No.	Height	Width	Open Area	Material	Finish
SVP-1*	1U	19.00"	35%	18-Gauge Steel	Black Semi-Gloss
SVP-2*	2U	19.00"	35%	18-Gauge Steel	Black Semi-Gloss
SVP-3*	3U	19.00"	35%	18-Gauge Steel	Black Semi-Gloss
SVP-4*	4U	19.00"	35%	18-Gauge Steel	Black Semi-Gloss
SVPL-1*	1U	19.00"	63%	18-Gauge Steel	Black Semi-Gloss
SVPL-2*	2U	19.00"	63%	18-Gauge Steel	Black Semi-Gloss
SVPL-3*	3U	19.00"	63%	18-Gauge Steel	Black Semi-Gloss
SVPL-4*	4U	19.00"	63%	18-Gauge Steel	Black Semi-Gloss

\* Available in multi-pack carton. See spec sheet for details.



**Slotted Holes:** Aluminum or steel rackmount panel w/slotted hole vent pattern and formed flange.

Model No.	Height	Width	Material	Finish
AVPB-1	1U	19.00"	0.050" Aluminum	Brushed Black Anodized
AVPB-2	2U	19.00"	0.050" Aluminum	Brushed Black Anodized
SVSP-1*	1U	19.00"	18-Gauge Steel	Black Semi-Gloss
SVSP-2*	2U	19.00"	18-Gauge Steel	Black Semi-Gloss
SVSPH-1	1U	10.40"	18-Gauge Steel	Black Semi-Gloss
SVSPH-2	2U	10.40"	18-Gauge Steel	Black Semi-Gloss

\* Available in multi-pack carton. See spec sheet for details. NOTE: 3U, 4U and 7U SVSP panels available under "Specialty Tops".

## PUNCHED PANELS

**Decorator Style Punches:** Steel panel with flange is punched for decorator style devices. Includes hardware. Some panels include a label pocket (templates found online). Black semi-gloss finish.

Model No.	Height	Width	Punches	Label Area	Device Mount	Material
D3P-ID-1	1U	19.00"	3	Yes	Horizontal	16-Gauge Steel
D3P-ID-2	2U	19.00"	3	Yes	Horizontal	16-Gauge Steel
D4P-1	1U	19.00"	4	---	Horizontal	18-Gauge Steel
D8P-ID-3	3U	19.00"	8	Yes	Vertical	18-Gauge Steel
D9P-ID-3 *	3U	19.00"	9	Yes	Vertical	18-Gauge Steel

### OPTIONS

DBB-4	Blank filler plates for unused decorator style positions (4 pack)
DBB-50	Blank filler plates for unused decorator style positions (50 pack)
DBB-100	Blank filler plates for unused decorator style positions (100 pack)

\* Panel can be used for up to four multi-gang devices mounted on alternate spacing. Confirm clearance for non-Lowell controls.

**Neutrik® Punches:** Steel panel with flange punched for Neutrik-D or Switchcraft-E connectors includes black and nickel-plated screws and label pocket. Black semi-gloss finish.

Model No.	Height	Width	Punches	Label Area	Material
N10P-ID-1	1U	19.00"	10	Yes	20-Gauge Steel

**Wall Plate Punches:** Steel panel punched for devices that have a 1-gang standard, non-removable wall plate that installs with two screws. Black semi-gloss finish. Spacing is not suitable for 2-gang devices.

Model No.	Height	Width	Punches	Device Mount	Material
SG6P-3	3U	19.00"	6	Vertical	16-Gauge Steel

**VC Punches:** Steel panel punched for volume controls such as Lowell LVC Series. Includes plugs for unused positions and label pocket. Does not include device-mounting hardware. **NOTE:** Preloaded option available. See spec sheet.

Model No.	Height	Width	Punches	Label Area	Material
LVC8P-ID-2	2U	19.00"	8	Yes	18-Gauge Steel

## SPECIALTY PANELS

**Two Handle Panel:** Steel rackmount panel with chrome handles can be mounted in the lower third of a mobile or pull-out rack to improve maneuverability. Black semi-gloss finish.

Model No.	Height	Width	Handle Depth	Material
SPH-1	1U	19.00"	1.1875"	14-Gauge Steel

**Knockout Panel:** Pair of steel knockout panels punched for Neutrik® D-series panel connectors. For use in rack series: LER, LGR, LPR, LPPR, and LWR. Black wrinkle finish.

Model No.	Width (Each)	Overall Height	Material
KOP-N	9.69"	2.69"	16-Gauge Steel

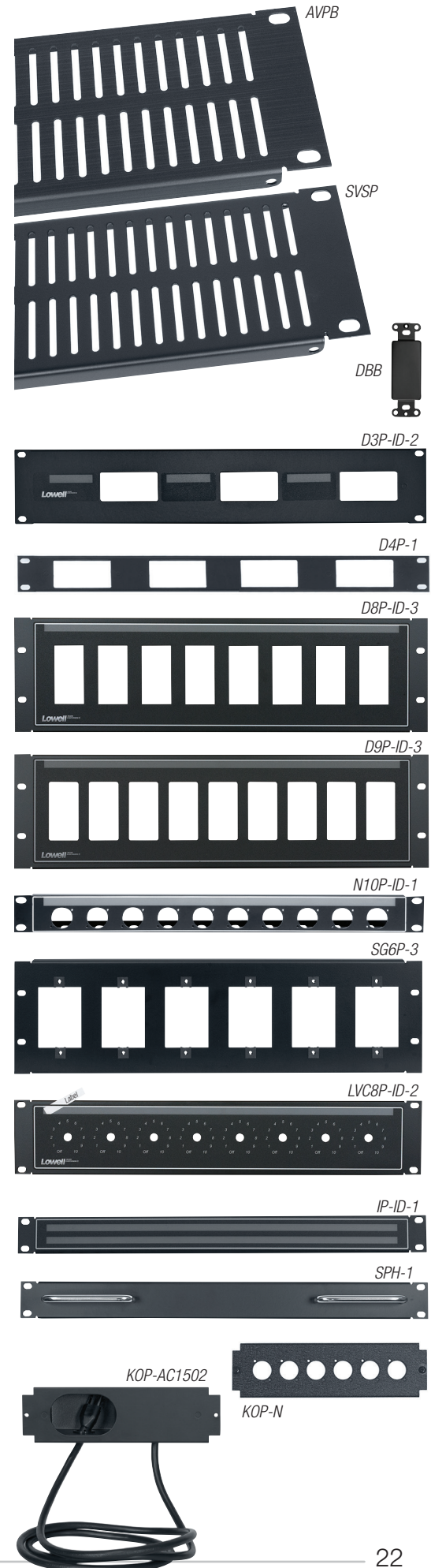
**Knockout Panel w/Accessories:** 10"W panel with fans, LED lights, or power outlets replaces rear KO panel in most racks (see spec sheet). Black semi-gloss finish.

Model No.	Description
KOP-L-SW	Steel panel w/two LED lights and button switch
KOP-L-PSW	Steel panel w/two LED lights and proximity (auto on/off) switch
KOP-L*	Add-on unit (steel panel w/two LED lights, no switch) *
KOP-B	Steel panel w/dual blower fans and power supply
KOP-BT	Steel panel w/dual blower fans, power supply, and thermostat probe
KOP-AC1502	Steel panel w/two 15A outlets and 6-ft. cord with entry ports

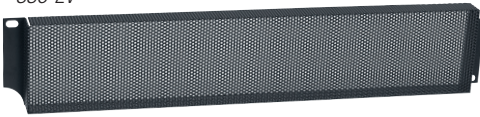
\* Only works with KOP-L-SW or KOP-L-PSW

**ID Panel:** Steel panel has label pocket to identify equipment mounted above and below it. Black semi-gloss finish.

Model No.	Height	Width	Label Area	Material
IP-ID-1	1U	19.00"	Yes	18-Gauge Steel



SSC-2V



SSC-2P



## SECURITY COVERS

**Vented:** Steel security cover has flange and vented front that protrudes 1.5" to allow room for equipment knobs. Black semi-gloss finish.

Model No.	Height	Width	Material
SSC-1V	1U	19.00"	18-Gauge Steel
SSC-2V	2U	19.00"	18-Gauge Steel
SSC-3V	3U	19.00"	18-Gauge Steel
SSC-4V	4U	19.00"	18-Gauge Steel

**Plexiglass:** Security cover has steel frame with flange and smoked plexiglass front that protrudes 1.5" to allow room for equipment knobs. Black semi-gloss finish (frame).

Model No.	Height	Width	Material
SSC-1P	1U	19.00"	16-ga. steel frame with plexiglass front
SSC-2P	2U	19.00"	16-ga. steel frame with plexiglass front

## RACK LIGHTING



RPL-F



RPL-T3



KOP-L



RLB-KIT-40



RL-1B

## PANELS, MAGNETIC & UTILITY LIGHTS

**Rackmount Panels w/Light:** Steel panels with bright white LEDs illuminate controls and workspace.

Model No.	Description	Height	Width	Light	Lumens	Switch
RPL-F	Panel w/lights (mounts in standard panel space)	1U	19.00"	5 LEDs	525	Push Button
RPL-T3	Panel w/lights (mounts in rack top)	3U	19.00"	5 LEDs	525	Push Button

**Knockout Panel w/Lights:** 10"W panel with LED lights replaces rear KO panel in most racks (see spec sheet).

Model No.	Description
KOP-L-SW	Steel panel w/two LED lights and button switch
KOP-L-PSW	Steel panel w/two LED lights and proximity (auto on/off) switch
KOP-L*	Add-on unit (steel panel w/two LED lights, no switch) *

\* Only works with KOP-L-SW or KOP-L-PSW

**Light Bar Kit:** Magnetic-mount light bars are designed for rack interiors. Blue or white light. Rocker or proximity (auto on/off) switch activation.

Model No.	Width	Depth	Length	Power (per bar)	Lumens (per bar)	Light Color	Switch	For Min. Rack Ht.
RLB-KIT-16	5/8"	5/8"	16"	4.4W	273	White	Rocker	10U
RLB-KIT-16P	5/8"	5/8"	16"	4.4W	273	White	Proximity	10U
RLB-KIT-40	5/8"	5/8"	40"	12W	780	White	Rocker	24U
RLB-KIT-40P	5/8"	5/8"	40"	12W	780	White	Proximity	24U
RLB-KITB-40	5/8"	5/8"	40"	12W	780	Blue	Rocker	24U
RLB-KIT-60	5/8"	5/8"	60"	18W	1170	White	Rocker	35U
RLB-KIT-60P	5/8"	5/8"	60"	18W	1170	White	Proximity	35U

**Utility Light:** Work light with swivel hook and rear magnet provides movable lighting.

Model No.	Light	Lumens	Cord	Switch
RL-1B	High Power COB LED	500	6-ft. cord	On/Off w/indicator light

## SCREWS & CAGE NUTS

**Pilot Point Screws:** 10-32 screws for threaded rails or cage nut applications include captive washers for time-saving installation. Black. Optional bits.

Model No.	Pilot Point Screw Type
RS-25	Phillips Truss Head (10-32 x 0.75", black zinc plated), 25 pc. bag
RS-100	Phillips Truss Head (10-32 x 0.75", black zinc plated), 100 pc. bag
RS-500	Phillips Truss Head (10-32 x 0.75", black zinc plated), 500 pc. jar
RSM-100	Premium Phillips Truss Head (10-32 x 0.875", 302 stainless steel, black oxide plated), 100 pc. bag
RSM-500	Premium Phillips Truss Head (10-32 x 0.875", 302 stainless steel, black oxide plated), 500 pc. jar
RSP-500	Phillips Finish Head (10-32 x 0.875", 5.1 hardness, black zinc plated w/painted head), 500 pc. jar
RSR-50	Robertson Sq. Head (10-32 x 0.875", black), 50 pc. bag
RSV-50	Torx Star Post Head (10-32 x 0.875", black), 50 pc. bag
OPTIONS	
RSR-BIT	Pin Drive Bit (Robertson Square)
RSV-BIT	Pin Drive Bit (Torx Star)

**Screws:** Screws with separate washer for square-punched rails. Black.

Model No.	Screw Type
RS1224-100	Phillips Pan Head (12-24 x 0.787"), 100 pc. bag
RS6MM-100	Phillips Pan Head (6mm), 100 pc. bag

**Cage Nuts:** For use in square-punched rails. Black.

Model No.	Description
RCN1224-100	Cage Nuts (12-24), 100 pc. bag
RCN6MM-100	Cage Nuts (6mm), 100 pc. bag
RCN1032-100	Cage Nuts (10-32), 100 pc. bag

## BRACKETS

**Rack Recessing Bracket:** Steel bracket fits over tapped rails to recess equipment 3" from front of rack rail. Black. Sold in pairs. **NOTE:** Brackets are not tapped.

Model No.	Height	Material	Mtg Hardware
RRB-2	2U	16-Gauge Steel	yes
RRB-3	3U	16-Gauge Steel	yes
RRB-4	4U	16-Gauge Steel	yes

**Rail Conversion Bracket:** Rail conversion bracket enables front rails (or optional rear rails) to change from fixed position to adjustable style. Sold in pairs. Black. For rack series: LDTR, LWER, LWSR. Includes hardware.

Model No.	Description
RRTBF	Rail conversion bracket

**Side Support Bracket:** Additional side support brackets for LXR Series rack. Sold in pairs. Includes hardware.

Model No.	Description
LXR-SB21	Side support brackets for 21"D LXR racks (or LVR Series racks assembled to 21"D)
LXR-SB26	Side support brackets for 26"D LXR racks (or LVR Series racks assembled to 26.25"D)

**Chassis Bracket:** Steel chassis brackets help support heavy equipment mounted in 19" racks (servers, amplifiers, UPS, etc.). Sold in pairs. Black. For use with Lowell Z-rails (ZR or ZRN Series).

Model No.	Description
<b>NEW</b> CHB-20	20"D steel chassis support bracket
<b>NEW</b> CHB-26	26"D steel chassis support bracket
<b>NEW</b> CHB-30	30"D steel chassis support bracket

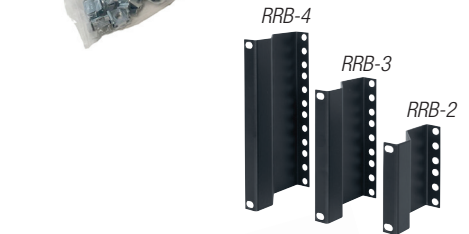
**Mounting Bracket:** Steel brackets facilitates mounting power strips and cable managers vertically in standard EIA racks. Sold in pairs. Black. For use with racks series: LRR, LXR, LVR.

Model No.	Description
PCMB-6	Mounting bracket for power strips, cable managers

## MISCELLANEOUS

**Casters:** Standard or fine-floor (to protect wood, tile, and marble).

Model No.	Description	Total Load Capacity	For Rack Series
C2S	Standard swivel casters, 2" diameter, 4 non-locking	500 lbs. (for set)	LPSR, LDTR
LXR-C3S	Standard swivel casters, 3" diameter, 4 non-locking	500 lbs. (for set)	LXR, LVR
LXR-C3SL	Standard swivel casters, 3" diameter, 2 non-locking / 2 locking	500 lbs. (for set)	LXR, LVR
LXR-C3SF	Fine-floor swivel casters, 3" diameter, 4 non-locking	500 lbs. (for set)	LXR, LVR
LXR-C3SFL	Fine-floor swivel casters, 3" diameter, 2 non-locking / 2 locking	500 lbs. (for set)	LXR, LVR



GBB-36



TLK



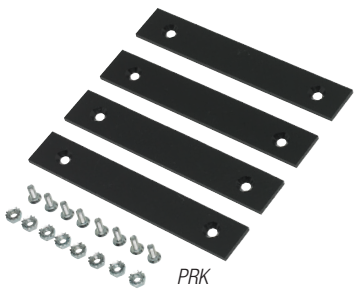
ISO-LL



LL



ISO-P1



PRK

**Ganging Hardware:** 1/4-20" x 5/8" hex and kep nuts.

Model No.	Description
RGH-40	1/4-20" x 5/8" hex and kep nuts, 40 pc. bag

**Grounding Bar:** 0.125" solid copper grounding bar (2"W) tapped 10-32. Lacing slots, tie-down points.

Model No.	Description	Length
GBB-36	Copper bar	36.00"
GBB-72	Copper bar	72.00"

**Latch:** Thumb-turn cam latch replaces key lock cylinder for keyless entry to rear rack door.

Model No.	Description
TLK	Thumb-turn cam latch

**Levelers:** Heavy-duty leg levelers stabilize rack on uneven floors.

Model No.	Description
LL	Four leg levelers

**Isolation Products:** Electrically isolate rack gear from conductive surfaces.

Model No.	Description
ISO-P1	Eight (1-3/8" x 4") isolation strips with adhesive backing
ISO-LL	Four heavy duty leg levelers w/non-skid rubber base and threaded stem

**Protective Runner Kit:** Plastic glides protect surfaces when rack is placed in a slide-in application such as inside a cabinet or credenza. Black.

Model No.	Description
PRK	Four plastic glides for rack series LDSR, LHFR, LVR, LXR
LCR-18RK	Two plastic glides for 18"D LCR racks
LCR-16RK	Two plastic glides for 16"D LCR racks

# POWER DISTRIBUTION PRODUCTS





Rackmount power strips include either universal brackets or clips and wire ties to mount vertically inside equipment racks. Shelf-mount power strips include screws to mount to rear flanges in Lowell US Series shelves.

**ONLINE** Power products for special applications, including half rack panels and modular power strips, can be found online at [www.lowellmfg.com](http://www.lowellmfg.com).

## FEATURES

- **Power Rating:** 15A or 20A (rating is per circuit)
- **Power Input:** 6 ft. or 12 ft. standard cord, 6 ft. detachable cord, 6 ft. flexible conduit (non-metallic) with pigtail leads, or pigtail leads at both ends of chassis.
- **Switch:** Power strips with an on/off switch activate and deactivate "switched" outlets via a rocker switch. Models without a switch provide continual power to "unswitched" outlets (as long as power is supplied to the unit itself).
- **Outlets:** NEMA 5-15R, NEMA 5-20R, or NEMA 5-20R IG (Insulated Ground)
- **Circuits:** Corded power strips are available with one circuit. Hardwired power strips are available with single or multiple (1-10) circuits.
- **Surge Protection:** Some power strips include built-in surge protection, as indicated in the chart below. Power strips with one star (★) protect against surges up to 6,500A; those with two stars (★★) protect against surges up to 40,000A.  
**Advanced Surge Suppression** against power surges up to 72,000A can be added as a separate unit; see page 33.
- **Remote Power Control (RPC):** Power strips with RPC circuitry must be connected to a device (such as a sequencer or SPST switch) that can activate the power strip from a remote location. ACS-2018-5C-RPCP-HW power strip for use with remote control pass-through connections (pg. 32).
- **Origin:** Most power strips are assembled in the U.S.A. with a U.S. steel chassis and global components. Imported power strips are sourced globally. See the chart below or individual spec sheets.

**POWERSTAC**

You can also design your own power strip placing 15A, 20A, or 30A power modules right where you need them. Visit [www.lowellmfg.com](http://www.lowellmfg.com)

## MODEL SUMMARY

Model No.	Circuits		NEMA Outlets 5-15R	NEMA Outlets 5-20R	Chassis	Power Input	Surge Protection	Misc.	Activation	Mtg. Hardware	NRTL	Origin
	Qty.	Power Rating										
ACS-1505-SW	1	15A	5sw	---	12"	6' Det. Cord	---	---	Rocker	Brackets	ETL	USA
ACS-1505-SW-SD	1	15A	5sw	---	12"	6' Det. Cord	★★	---	Rocker	Brackets	ETL	USA
ACS-1506	1	15A	6un	---	20"	6' Cord	★	---	---	Clips/Ties	UL	Imported
ACS-1506-WW	1	15A	6un	---	12"	6' Cord	---	---	---	Screws **	ETL	USA
ACS-1507	1	15A	7un	---	12"	6' Det. Cord	---	---	---	Screws **	ETL	USA
ACS-1510-RPC	1	15A	8sw + 2un	---	30"	6' Det. Cord	---	RPC	External *	Brackets	ETL	USA
ACS-1512	1	15A	12un	---	32"	12' Cord	★	---	---	Clips/Ties	UL	Imported
ACS-1524	1	15A	24un	---	60"	12' Cord	★	---	---	Clips/Ties	UL	Imported
ACS-1524-2C	2	15A	24un	---	70"	Pigtails (ends)	---	---	---	Clips/Ties	ETL	Imported
ACS-2012	1	20A	8un	4un	32"	12' Cord	★	---	---	Clips/Ties	UL	Imported
ACS-2010-RPC-HW	1	20A	---	8sw + 2 un	30"	6' Flex-Conduit	---	RPC	External *	Brackets	ETL	USA
ACS-2014-HW	1	20A	---	14un	30"	6' Flex-Conduit	---	---	---	Brackets	ETL	USA
ACS-2014-2C-HW	2	20A	8un	6un	30"	6' Flex-Conduit	---	---	---	Brackets	ETL	USA
ACS-2018-5C-RPC-HW	5	20A	---	16sw + 2un	60"	6' Flex-Conduit	---	RPC	External *	Brackets	ETL	USA
<b>NEW</b> ACS-2018-5C-RPCP-HW	5	20A	---	16sw + 2un	60"	6' Flex-Conduit	★	RPC	SEQ-P4 or SEQR-P4 *	Brackets	ETL	USA
ACS-2020-6C-HW	6	20A	---	20un	60"	6' Flex-Conduit	---	---	---	Brackets	ETL	USA
ACS-2020-IG-6C-HW	6	20A	---	20un (IG)	60"	6' Flex-Conduit	---	---	---	Brackets	ETL	USA
ACS-2020-IG-10C-HW	10	20A	---	20un (IG)	60"	6' Flex-Conduit	---	---	---	Brackets	ETL	USA
ACS-2024	1	20A	16un	8un	70"	12' Cord	★	---	---	Clips/Ties	UL	Imported
ACS-2024-2C	2	20A	---	24un	70"	Pigtails (ends)	---	---	---	Clips/Ties	ETL	Imported

\* Items are required but not included. Order external activation switches separately (see pg. 30). \*\* Screws are included to mount the power strip to rear notches in Lowell US Series rack shelves.

# RACKMOUNT PANELS with POWER

Rackmount panels for E.I.A. equipment racks measure 19 in. x 1.75 in. (1U) x 9 in. D, except as noted.



ACSPR-SEQ4-1509

## FEATURES

- **Power Rating:** 15A or 20A
- **Power Input:** 6 ft. or 9 ft. standard cord, 9 ft. detachable cord, or 6 ft. flexible conduit (non-metallic) with pigtail leads.
- **Switch:** Most panels feature an on/off switch (rocker or key activation) that controls power to the "switched" outlets. "Unswitched" outlets remain on as long as power is supplied to the unit.
- **Outlets:** Panels feature seven to nine NEMA 5-15R or NEMA 5-20R outlets. The typical set-up is one outlet in front with the rest in back. Various combinations of "switched" and "unswitched" outlets are available.
- **Surge Protection:** Some panels include built-in surge protection, as indicated in the chart below. Panels with one star (★) protect against surges up to 30,000A; those with two stars (★★) protect against surges up to 40,000A; those with three stars (★★★) feature **Advanced Surge Suppression** and protect against surges up to 72,000A.
- **Remote Power Control (RPC):** Panels with RPC circuitry can be connected to a device (such as a SPST switch) that can activate the panel from a remote location.
- **Sequencer:** Some models feature 4-step (SEQ4) or 6-step (SEQ6) power sequencing for time-delayed activation and deactivation of equipment plugged into the switched outlets. The 6-step sequencers include dry contact closures for remote power controls.
- **Over/Under:** Panels with over/under protection feature circuitry that turns the unit off when voltage exceeds specified parameters. The unit will start-up automatically when voltage returns to normal (within specified parameters).
- **Alarm Interface:** Panels with this feature have a rear terminal block to allow system switches to be overridden (for life safety system applications where fire code mandates an alarm interface).
- **Service Interface:** Panels with this feature provide quick network access from the front of the rack using pass-through connectivity ports (front RJ45 to rear RJ45; front USB-A to rear USB-B). Optional high speed charging ports (front or rear). Model SIP-1 does not feature power outlets.

## ONLINE

Power products for special applications, including half rack panels and modular power strips, can be found online [www.lowellmfg.com](http://www.lowellmfg.com).

- **Origin:** Most power panels are assembled in the U.S.A. with a U.S. steel chassis and global components. Imported power panels are sourced globally. See the chart below or individual spec sheets.

## MODEL SUMMARY

Model No.	Power Rating	NEMA Outlets 5-15R	NEMA Outlets 5-20R	Power Input	Surge Protection	Misc.	On/Off Switch	Alarm Interface	Service Interface	NRTL	Origin
ACR-1505-SSI-RC	15A	5un	---	6' Cord	★★	Rear Charging Ports	---	---	Yes	ETL	USA
ACR-1507-SSI-FC	15A	7un	---	6' Cord	★★	Front Charging Ports	---	---	Yes	ETL	USA
SIP-1	---	---	---	---	---	---	---	---	Yes	---	USA
ACR-1509-S	15A	3sw + 6un	---	9' Cord	★	---	Rocker	---	---	UL	Imported
ACR-159-S	15A	9sw	---	9' Cord	★	---	Rocker	---	---	UL	Imported
ACR-2009	20A	3sw + 2un	2sw + 2un	9' Cord	---	---	Rocker	---	---	ETL	USA
ACR-209-S	20A	---	9sw	9' Cord	★	---	Rocker	---	---	UL	Imported
ACR-SEQ4-1509	15A	6sw + 3un	---	9' Cord	---	SEQ(4) + RPC	Rocker	Yes	---	ETL	USA
ACR-SEQ6-2009	20A	6sw + 3un	---	9' Cord	---	SEQ(6) + RPC	Rocker	Yes	---	ETL	USA
ACSPR-1509	15A	5sw + 4un	---	9' Cord	★★★	---	Rocker	---	---	ETL	USA
ACSPR-1509-VTE	15A	5sw + 4un	---	9' Cord	★★★	RPC + Over/Under	Rocker	---	---	ETL	USA
ACSPR-2009	20A	3sw + 2un	2sw + 2un	9' Cord	★★★	---	Rocker	---	---	ETL	USA
ACSPR-2009-VTE	20A	3sw + 2un	2sw + 2un	9' Cord	★★★	Over/Under	Rocker	---	---	ETL	USA
ACSPR-RPC1-1509	15A	6sw + 3un	---	9' Cord	★★★	RPC + Over/Under	Rocker	Yes	---	ETL	USA
ACSPR-RPC1-1509K	15A	6sw + 3un	---	9' Cord	★★★	RPC + Over/Under	Key	Yes	---	ETL	USA
ACSPR-RPC1-2009	20A	6sw + 3un	---	9' Cord	★★★	RPC + Over/Under	Rocker	Yes	---	ETL	USA
ACSPR-SEQ4-1509	15A	6sw + 3un	---	9' Cord	★★★	SEQ(4) + RPC	Rocker	Yes	---	ETL	USA
ACSPR-SEQ4-1509K	15A	6sw + 3un	---	9' Cord	★★★	SEQ(4) + RPC	Key	Yes	---	ETL	USA
ACSPR-SEQ6-2009	20A	6sw + 3un	---	9' Cord	★★★	SEQ(6) + RPC	Rocker	Yes	---	ETL	USA
ACR-1508-SHW	15A	8un	---	6' Flex-Conduit	★	---	---	---	---	ETL	USA
ACR-1506-LTS	15A	6sw	---	9' Cord	★	White Light	Rocker	---	---	ETL	USA
ACR-1507-GNLT	15A	2sw + 5un	---	9' Det. Cord	---	Gooseneck Light	Rocker	---	---	ETL	USA
ACR-1507-HDLT	15A	2sw + 5un	---	9' Det. Cord	---	Night Vision Light	Rocker	---	---	ETL	USA
ACR-RPC-1508-SD	15A	6sw + 2un	---	9' Cord	★★	RPC	External *	Yes	---	ETL	USA
RPC-4CD **	15A	8sw	---	6' Cord	---	RPC	External *	---	---	ETL	USA

\* Items are required but not included. Order external activation switches separately (see pg. 30). \*\* RPC-4CD panel measures 19" x 2U x 2.75"D

# UNINTERRUPTIBLE POWER SUPPLIES

Uninterruptible power supplies (UPS) protect critical data and equipment from power problems while supplying clean, reliable network-grade power. Choose online or line interactive UPS, or a compact UPS with lithium battery.



UPS 8 Series

## SERIES:

- UPS8 Series:** LINE INTERACTIVE pure sine wave UPS ships with a 4-point rackmount rail kit and tower pedestals for versatile mounting options. This series features a smart LCD display, 99% high efficiency ECO mode, hot swappable battery, and auto restart. Includes 3-year limited warranty on electronics and battery (optional 5-year warranty available).
- UPS V Series:** LINE INTERACTIVE pure sine wave UPS (value series) ships with a 2-point rackmount rail kit and tower pedestals. This series features a smart LCD display, 96% high efficiency ECO mode, plug-and-play functionality, and auto restart. Includes 3-year limited warranty on electronics and battery (optional 5-year warranty available).
- UPS9 Series:** ONLINE pure sine wave UPS ships with a 4-point rackmount rail kit and tower pedestals. This series features a smart LCD display, 98% high efficiency ECO mode, hot swappable battery, and auto restart. Includes 3-year limited warranty on electronics and battery (optional 5-year warranty available).
- UPS6-350LI:** COMPACT LIGHTWEIGHT UPS with lithium battery is ideal for protecting video walls, kiosks, gaming machines, point-of-sale equipment, and similar electronics. Sine wave (normal) or simulated sine wave (battery mode) waveform. 350VA/200W capacity. 6.9"x 8.5"x 1.25". Includes 5-year limited warranty on electronics and battery.

## INDIVIDUAL PRODUCTS

Type	Model No.	Power Rating	Height	Mtg Hardware	Bundles Available*
LINE INTERACTIVE UPS	UPS8-800	800VA (720W)	2U	4-pt rail kit + pedestals	---
	UPS8-1100	1100VA (990W)	2U	4-pt rail kit + pedestals	Yes
	UPS8-1500	1500VA (1350W)	2U	4-pt rail kit + pedestals	Yes
	UPS8-2000	2000VA (1800W)	2U	4-pt rail kit + pedestals	Yes
	UPS8-2200	2200VA (2000W)	2U	4-pt rail kit + pedestals	Yes
	UPS8-3000	3000VA (2700W)	2U	4-pt rail kit + pedestals	Yes
VALUE LINE INTERACTIVE UPS	UPS V-700	700VA (420W)	2U	Rack ears	---
	UPS V-1000	1000VA (600W)	2U	Rack ears	---
	UPS V-1500	1500VA (900W)	2U	Rack ears	---
	UPS V-2000	2000VA (1200W)	2U	Rack ears	---
ONLINE UPS	UPS9-1000	1000VA (900W)	2U	4-pt rail kit + pedestals	Yes
	UPS9-1500	1500VA (1350W)	2U	4-pt rail kit + pedestals	Yes
	UPS9-2000	2000VA (1800W)	2U	4-pt rail kit + pedestals	Yes
	UPS9-3000	3000VA (2700W)	2U	4-pt rail kit + pedestals	Yes
	UPS9C-1000	1000VA (800W)	1U	4-pt rail kit	---
COMPACT UPS w/Lithium Battery	UPS6-350LI	350VA (200W)	1.25"	L-brackets	---

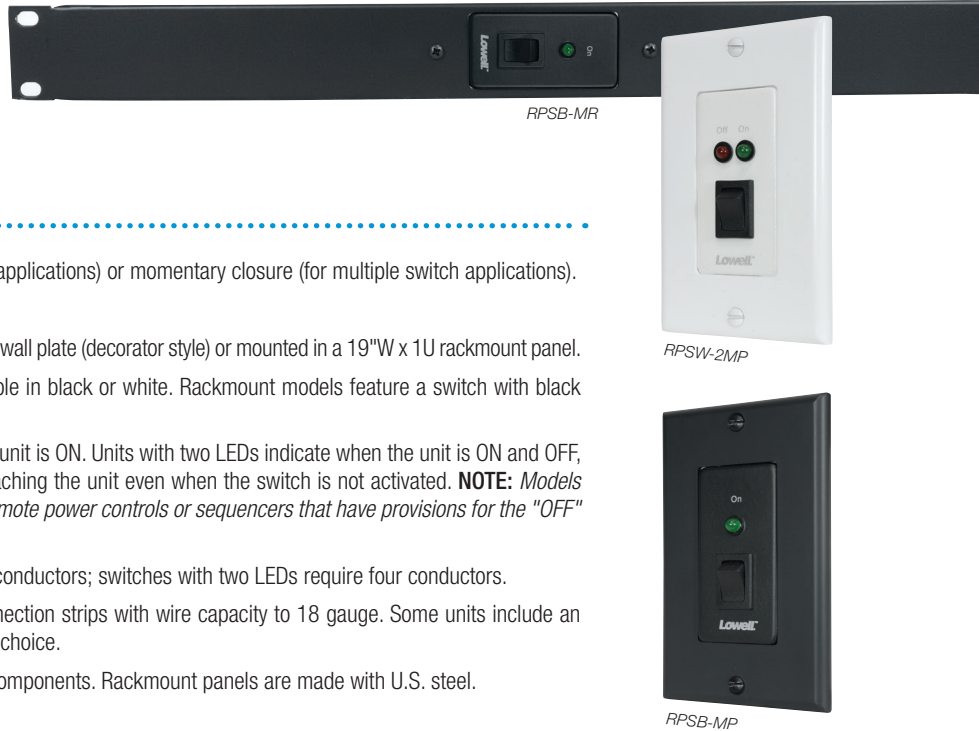
\* UPS bundled with select accessories, visit [www.lowellmfg.com](http://www.lowellmfg.com) for details.

ACCESSORIES	Description	Mtg Hardware
UPS-RELAY	Dry contact relay card	---
UPS-SNMP	SNMP card	---
UPS-SNMP-EMP	Environment monitoring sensor	---
UPS-XBDM-20RHW	Hardwired bypass module	---
UPS-XBDM-20RCD	Corded bypass module	---
UPS6-IEC-RA-CD	6' Cord w/right-angle plug for UPS6-350LI	---
UPS-XBP-36	EXPANSION BATTERY PACK for UPS9-1500	4-pt rail kit + pedestals
UPS-XBP-36E	EXPANSION BATTERY PACK for UPS9-1500	4-pt rail kit + pedestals
UPS-XBP-48	EXPANSION BATTERY PACK for UPS8-1500, UPS8-2000, UPS9-2000	4-pt rail kit + pedestals
UPS-XBP-72	EXPANSION BATTERY PACK for UPS8-2200, UPS8-3000, UPS9-3000	4-pt rail kit + pedestals



# LOW-VOLTAGE (SPST) SWITCHES

Single-pole single-throw switches are available in a rackmount panel or with a one-gang decorator style wall plate. These low-voltage switches are typically used with remote power controls and sequencers.



## FEATURES

- **Closure Type:** Maintained closure (for single switch applications) or momentary closure (for multiple switch applications).
- **Activation:** Rocker or key.
- **Mounting Style:** Switches are available with a one-gang wall plate (decorator style) or mounted in a 19"W x 1U rackmount panel.
- **Color:** Decorator style wall plates are available in black or white. Rackmount models feature a switch with black subplate mounted to a black panel.
- **LED(s):** Units with one LED indicate when the unit is ON. Units with two LEDs indicate when the unit is ON and OFF, providing assurance that power is reaching the unit even when the switch is not activated. **NOTE: Models with two LEDs are only for use with remote power controls or sequencers that have provisions for the "OFF" indicator (see spec sheets).**
- **Conductors:** Switches with one LED require three conductors; switches with two LEDs require four conductors.
- **Connections:** All units feature rear termination connection strips with wire capacity to 18 gauge. Some units include an RJ45 jack as an alternate connection choice.
- **Origin:** Assembled in the U.S.A. with global components. Rackmount panels are made with U.S. steel.

## MODEL SUMMARY

Model No.	Closure Type		Activation	Mounting Style	Color	LED(s)	Conductors	Connections
RPSB-KR	Maintained	---	Key	Rackmount Panel	Black	1	3	Termination Strips
RPSB-KR-RJ	Maintained	---	Key	Rackmount Panel	Black	1	3	Termination Strips + (1) RJ45
RPSB-P	Maintained	---	Rocker	Wall Plate	Black	1	3	Termination Strips
RPSB-P-RJ	Maintained	---	Rocker	Wall Plate	Black	1	3	Termination Strips + (1) RJ45
RPSB-R	Maintained	---	Rocker	Rackmount Panel	Black	1	3	Termination Strips
RPSB-R-RJ	Maintained	---	Rocker	Rackmount Panel	Black	1	3	Termination Strips + (1) RJ45
RPSW-KP	Maintained	---	Key	Wall Plate	White	1	3	Termination Strips
RPSW-KP-RJ	Maintained	---	Key	Wall Plate	White	1	3	Termination Strips + (1) RJ45
RPSW-P	Maintained	---	Rocker	Wall Plate	White	1	3	Termination Strips
RPSW-P-RJ	Maintained	---	Rocker	Wall Plate	White	1	3	Termination Strips + (1) RJ45
RPSB-KP-ASM *	Maintained	---	Key	Wall Plate	Black	1	3	Termination Strips
RPSB2-MKP	---	Momentary	Key	Wall Plate	Black	2	4	Termination Strips
RPSB2-MKP-RJ	---	Momentary	Key	Wall Plate	Black	2	4	Termination Strips + (1) RJ45
RPSB2-MKR	---	Momentary	Key	Rackmount Panel	Black	2	4	Termination Strips
RPSB2-MKR-RJ	---	Momentary	Key	Rackmount Panel	Black	2	4	Termination Strips + (1) RJ45
RPSB2-MP	---	Momentary	Rocker	Wall Plate	Black	2	4	Termination Strips
RPSB2-MP-RJ	---	Momentary	Rocker	Wall Plate	Black	2	4	Termination Strips + (1) RJ45
RPSB2-MR	---	Momentary	Rocker	Rackmount Panel	Black	2	4	Termination Strips
RPSB2-MR-RJ	---	Momentary	Rocker	Rackmount Panel	Black	2	4	Termination Strips + (1) RJ45
RPSB-MKP	---	Momentary	Key	Wall Plate	Black	1	3	Termination Strips
RPSB-MKR	---	Momentary	Key	Rackmount Panel	Black	1	3	Termination Strips
RPSB-MP	---	Momentary	Rocker	Wall Plate	Black	1	3	Termination Strips
RPSB-MR	---	Momentary	Rocker	Rackmount Panel	Black	1	3	Termination Strips
RPSW2-MKP	---	Momentary	Key	Wall Plate	White	2	4	Termination Strips
RPSW2-MKP-RJ	---	Momentary	Key	Wall Plate	White	2	4	Termination Strips + (1) RJ45
RPSW2-MP	---	Momentary	Rocker	Wall Plate	White	2	4	Termination Strips
RPSW2-MP-RJ	---	Momentary	Rocker	Wall Plate	White	2	4	Termination Strips + (1) RJ45
RPSW-MKP	---	Momentary	Key	Wall Plate	White	1	3	Termination Strips
RPSW-MP	---	Momentary	Rocker	Wall Plate	White	1	3	Termination Strips

\* This switch is only for use with sequencers featuring ASM (alternate sequencing mode)

# CLASSIC CONNECTION DEVICES: SEQUENCERS, REMOTE POWER CONTROLS & RELAYS

DISTRIBUTED POWER

Combine remote power controls, power sequencers, and relays for an intrinsically safe, low-voltage way to control AC power to equipment at remote locations. With the exception of rackmount sequencers, which include their own SPST switch for activation, all devices will require an external trigger switch or connection to a device that has an activation trigger. (Order external switches separately.)



RPC-15



SEQ-8



RY-2A

## IMPORTANT TECH TIP

**REMOTE DEVICES with CLASSIC CONNECTIONS** are made for use with 3- or 4-wire conductors, although a few models have a single RJ45 jack for cat5/6 cable. Classic devices can be combined with each other and do not require a sequencer for activation. *Note: These devices are not interchangeable with "pass-through" devices on the following page. See spec sheets for more information.*

## CLASSIC CONNECTIONS

Models include either a 6 ft. standard cord, 6 ft. detachable cord, 6 ft. flexible conduit (non-metallic) with pigtail leads for hardwired applications, or power supply with 6 ft. cable. Units are activated by contact closure (CC) and/or voltage trigger (VT) – see chart. All models have terminal strips; some models have a paralleled RJ45 jack.

- **Sequencers:** Classic power sequencers (SEQ Series) are available as stand-alone units or in rackmount panels, as listed in the chart below. Sequencers feature 4-step or 8-step time-delayed activation and deactivation of connected equipment (screwdriver-adjustable delay).
- **Remote Power Controls (RPC):** Classic remote power controls (RPC Series) can be used alone or with a compatible relay or sequencer. An external trigger (ex. SPST switch or sequencer) is required for activation. A variety of outlets are available. Units with surge suppression protect against power surges up to 20,000A (★). ETL Listed.
- **Relays:** Classic general purpose relays (RY Series) feature two or four double-pole double-throw (DPDT) relays. An external trigger is required for activation.
- **Origins:** Assembled in the U.S.A. with global components and U.S. steel chassis.

## MODEL SUMMARY

Model No.	Description	Style	Outlets	Power Input		Surge Protection	Activation	Connections
SEQR-4	Sequencer (4-step)	Rackmount Panel	---	Power Supply	100-240VAC 50/60Hz	---	Rocker Switch	TS
SEQR-4K	Sequencer (4-step)	Rackmount Panel	---	Power Supply	100-240VAC 50/60Hz	---	Key Switch	TS
SEQR-8	Sequencer (8-step)	Rackmount Panel	---	Power Supply	100-240VAC 50/60Hz	---	Rocker Switch	TS
SEQR-8K	Sequencer (8-step)	Rackmount Panel	---	Power Supply	100-240VAC 50/60Hz	---	Key Switch	TS
SEQR-8RJ	Sequencer (8-step)	Rackmount Panel	---	Power Supply	100-240VAC 50/60Hz	---	Rocker Switch	TS + RJ45
SEQ-4	Sequencer (4-step)	Standalone	---	Power Supply	100-240VAC 50/60Hz	---	CC *	TS
SEQ-8	Sequencer (8-step)	Standalone	---	Power Supply	100-240VAC 50/60Hz	---	CC *	TS
RPC-15	Remote Power Control	Standalone	(2) NEMA 15A	6' Cord	125VAC 60Hz	---	CC *	TS
RPC-15-S	Remote Power Control	Standalone	(2) NEMA 15A	6' Cord	125VAC 60Hz	★	CC *	TS
RPC-15-SCD-RJ	Remote Power Control	Standalone	(2) NEMA 15A	6' Cord	125VAC 60Hz	★	CC or VT *	TS + RJ45
RPC-15-U	Remote Power Control	Standalone	(2) IEC C13	(2) 6' Det. Cords	100-240VAC 50/60Hz	---	CC or VT *	TS
RPC-20-CD	Remote Power Control	Standalone	(2) NEMA 20A	6' Cord	125VAC 60Hz	---	CC or VT *	TS
RPC-20-SCD	Remote Power Control	Standalone	(2) NEMA 20A	6' Cord	125VAC 60Hz	★	CC or VT *	TS
RPC-20-SCD-RJ	Remote Power Control	Standalone	(2) NEMA 20A	6' Cord	125VAC 60Hz	★	CC or VT *	TS + RJ45
RPC-20-HW	Remote Power Control	Standalone	(2) NEMA 20A	6' Flex-Conduit	125VAC 60Hz	---	CC or VT *	TS
RPC-20-SHW	Remote Power Control	Standalone	(2) NEMA 20A	6' Flex-Conduit	125VAC 60Hz	★	CC or VT *	TS
RPC-30-SHW	Remote Power Control	Standalone	(1) Twistlock 30A	6' Flex-Conduit	125VAC 60Hz	★	CC or VT *	TS
RPC-3N1	Remote Power Control	Standalone	(8) NEMA 15A	6' Cord	125VAC 60Hz	---	CC or VT *	TS
RY-2	DPDT Relay (2)	Standalone	---	External *	24VDC	---	CC *	TS
RY-4	DPDT Relay (2)	Standalone	---	External *	24VDC	---	CC *	TS
RY-2A	DPDT Relay (4)	Standalone	---	Power Supply	125VAC 60Hz	---	CC or VT *	TS
RY-4A	DPDT Relay (4)	Standalone	---	Power Supply	125VAC 60Hz	---	CC or VT *	TS

\* Items are required but not included. Order external activation switches separately (see pg. 30). Voltage triggers provided by other control systems. Det. Cord = Detachable Cord; TS = Terminal Strip; CC = Contact Closure; VT = Voltage Trigger

# PASS-THROUGH CONNECTION DEVICES: SEQUENCERS, REMOTE POWER CONTROLS & RELAYS

The pass-through series of remote power controls, relays, and sequencers were developed for fast, scalable installation, with two (pass-through) RJ45 jacks on each unit for quick connections using Cat5/Cat6 cable. Because the choice of sequencing step is made via a switch on each unit, you can easily scale the system up or down, or change the sequencing order, without having to rewire.

## IMPORTANT TECH TIP

**REMOTE DEVICES with PASS-THROUGH CONNECTIONS** require a specific sequencer (model SEQ-P4 or SEQR-P4) for activation. Pass-through devices can be combined in any configuration so long as the first unit in a string connects to one of the specified sequencers. Each device has two (pass-through) RJ45 jacks and a DIP switch to select its sequencing position. *Note: These devices are not interchangeable with "classic connection" devices on the previous page. See spec sheets for more information.*

## PASS-THROUGH CONNECTIONS

Models include a power supply with 6 ft. cable, 6 ft. standard cord, 6 ft. detachable cord, or 6 ft. flexible conduit (non-metallic) with pigtail leads for hardwired applications.

- Sequencers:** A pass-through sequencer (SEQ-P4 or SEQR-P4) is required to activate pass-through remote power controls and relays. An external trigger (ex. SPST switch or DSP voltage connection) is required to activate the stand-alone sequencer SEQ-P4. Both sequencers feature 4-steps and a switch to adjust the delay between steps.
- Remote Power Controls (RPC):** Pass-through remote power controls (RPC-P Series) require a sequencer (SEQ-P4 or SEQR-P4) for activation. Then they can be connected to each other and relays in any order via the RJ45 jacks on each unit. An onboard DIP switch is used to select the start-up position (step 1-4). Units with surge suppression protect against power surges up to 20,000A (★). ETL Listed.
- Relays:** Pass-through relays (RY-P Series) require a sequencer (SEQ-P4 or SEQR-P4) for activation. Each pass-through relay features one or two independent double-pole double-throw (DPDT) relays that can be used to switch any AC or DC load up to 5A. Contact rating: 5A 30VDC/250VAC. Relays feature two RJ45 jacks and a DIP switch to select the sequence step.
- Power Strip:** The pass-through 20A power strip with 18 outlets requires a sequencer (SEQ-P4 or SEQR-P4) for activation. Onboard DIP switches are used to select the start-up position (step 1-4) for (8) NEMA 20A duplex receptacles. Another 20A duplex is unswitched (always on).
- Origins:** Assembled in the U.S.A. with global components and U.S. steel chassis.



## MODEL SUMMARY

Model No.	Description	Style	Outlets	Power Input	Surge Protection	Activation	Connections
SEQ-P4	Sequencer (4-step)	Standalone	---	Power Supply 100-240VAC 50/60Hz	---	External *	(2) RJ45
<b>NEW</b> SEQR-P4	Sequencer (4-step)	Rackmount	---	Power Supply 100-240VAC 50/60Hz	★	Rocker Switch or External **	TS + (2) RJ45
RPC-P15	Remote Power Control	Standalone	(2) NEMA 15A	6' Cord 125VAC 60Hz	---	SEQ-P4 or SEQR-P4 *	(2) RJ45
RPC-P15-S	Remote Power Control	Standalone	(2) NEMA 15A	6' Cord 125VAC 60Hz	★	SEQ-P4 or SEQR-P4 *	(2) RJ45
RPC-P15-U	Remote Power Control	Standalone	(2) IEC C13	(2) 6' Det. Cords 100-240VAC 50/60Hz	---	SEQ-P4 or SEQR-P4 *	(2) RJ45
RPC-P20-SCD	Remote Power Control	Standalone	(2) NEMA 20A	6' Cord 125VAC 60Hz	★	SEQ-P4 or SEQR-P4 *	(2) RJ45
RPC-P20-SHW	Remote Power Control	Standalone	(2) NEMA 20A	6' Flex-Conduit 125VAC 60Hz	★	SEQ-P4 or SEQR-P4 *	(2) RJ45
RPC-P30-SHW	Remote Power Control	Standalone	(1) Twistlock 30A	6' Flex-Conduit 125VAC 60Hz	★	SEQ-P4 or SEQR-P4 *	(2) RJ45
RY-P1	DPDT Relay (1)	Standalone	---	Power Supply 100-240VAC 50/60Hz	---	SEQ-P4 or SEQR-P4 *	(2) RJ45
RY-P2	DPDT Relay (2)	Standalone	---	Power Supply 100-240VAC 50/60Hz	---	SEQ-P4 or SEQR-P4 *	(2) RJ45
<b>NEW</b> ACS-2018-5C-RPCP-HW	Remote Power Control	Power Strip	(18) NEMA 20A	6' Flex-Conduit 100-240VAC 50/60Hz	★	External *	(2) RJ45

\* Items are required but not included. Order external activation switches separately (see pg. 30). \*\* External activation switch for SEQR-P4 is optional and sold separately (see pg. 30). Det. Cord = Detachable Cord; TS = Terminal Strip

# ADVANCED SURGE SUPPRESSION

Lowell's Advanced Surge Suppression provides multiple layers of protection for equipment on a single circuit. With TCR technology (Triple Clamping Redundancy), these advanced devices can protect sensitive equipment from harmful power surges and spikes up to 72,000A when fully active.



## FEATURES:

- Suppresses line to neutral with no ground contamination
- Excellent EMI/RMI filtering
- Rotating plate allows front or side access to outlets.
- Detachable (Det. Cord) or attached cord (Cord) and hardwired units (Flex-Conduit)
- Mounting brackets for versatile installation
- ETL Listed. UL1449 third edition compliant. ANSI C62.41 compliant.
- Choice of over/under protection (VTE, turns outlets off when voltage exceeds specified parameters), or remote power control (RPC, allows SPD to be controlled by a remote switch—not included).

## MODEL SUMMARY

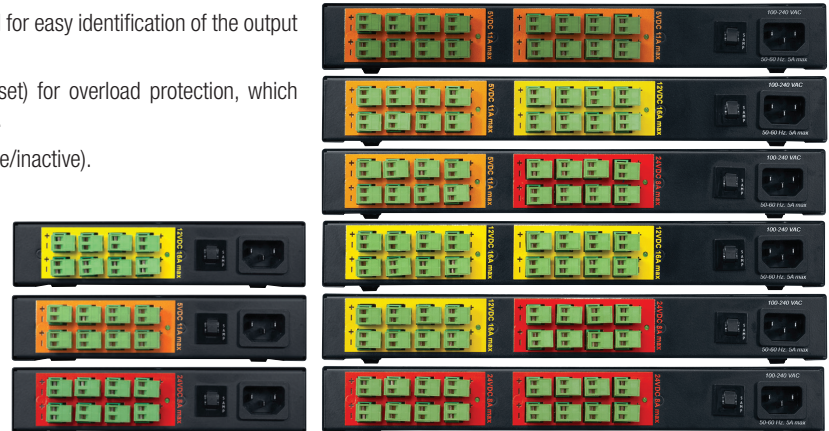
Model No.	Power Rating	Outlets	Power Input	Chassis	Misc.	NRTL	Origin
ACSP-1502-VTE	15A	(2) NEMA 15A	6' Det. Cord	9" x 1.75" x 6"	Over/Under Protection	ETL	USA
ACSP-1502-RPC	15A	(2) NEMA 15A	6' Det. Cord	9" x 1.75" x 6"	RPC	ETL	USA
ACSP-2002-VTE	20A	(2) NEMA 20A	6' Cord	9" x 1.75" x 6"	Over/Under Protection	ETL	USA
ACSP-2002-RPC	20A	(2) NEMA 20A	6' Cord	9" x 1.75" x 6"	RPC	ETL	USA
ACSP-2002-RPC-HW	20A	(2) NEMA 20A	6' Flex-Conduit	9" x 1.75" x 6"	RPC	ETL	USA

# MULTI-OUTPUT DC POWER DISTRIBUTION

Designed for continuous operation, the DCP provides power banks, each with eight outputs. This is an ideal format to streamline installations that use DC powered devices. Power banks are available in various combinations of 5VDC, 12VDC, or 24VDC. Optional 12 in. x 1.625 in. x 6 in. chassis or compact 7 in. x 1.625 in. x 6 in. in. chassis.

## FEATURES:

- Power banks are available in various combinations and color-coded for easy identification of the output voltage (5V=orange, 12V=yellow, 24V=red).
- Each individual output is protected by a PTC fuse (with auto reset) for overload protection, which enables other outputs to continue functioning even if one shuts off.
- An LED status indicator on each bank indicates power status (active/inactive).
- Utilizes Phoenix style connectors for quick installation.
- Mounting brackets mount the unit to a wall or shelf. Larger (12 in. units) can also be mounted in a rack.
- Universal input (100-240VAC 50/60Hz)
- C14 power inlet, compatible with international standards.
- ETL Listed. UL60065 compliant.



## MODEL SUMMARY

Model No.	Total Watts	Chassis (W x H X D)	Power Input	POWER BANK 1				POWER BANK 2				NRTL	Origin
				Output Voltage	Output Qty.	Total Amps	Color	Output Voltage	Output Qty.	Total Amps	Color		
DCP-55	110	12 in. x 1.625 in. x 6 in.	6' Det. Cord	5 VDC	8	11A	Orange	5 VDC	8	11A	Orange	ETL	USA
DCP-512	247	12 in. x 1.625 in. x 6 in.	6' Det. Cord	5 VDC	8	11A	Orange	12 VDC	8	16A	Yellow	ETL	USA
DCP-524	247	12 in. x 1.625 in. x 6 in.	6' Det. Cord	5 VDC	8	11A	Orange	24 VDC	8	8A	Red	ETL	USA
DCP-1212	384	12 in. x 1.625 in. x 6 in.	6' Det. Cord	12 VDC	8	16A	Yellow	12 VDC	8	16A	Yellow	ETL	USA
DCP-1224	384	12 in. x 1.625 in. x 6 in.	6' Det. Cord	12 VDC	8	16A	Yellow	24 VDC	8	8A	Red	ETL	USA
DCP-2424	384	12 in. x 1.625 in. x 6 in.	6' Det. Cord	24 VDC	8	8A	Red	24 VDC	8	8A	Red	ETL	USA
DCP-5	55	7 in. x 1.625 in. x 6 in.	6' Det. Cord	5 VDC	8	11A	Orange	---	---	---	---	ETL	USA
DCP-12	192	7 in. x 1.625 in. x 6 in.	6' Det. Cord	12 VDC	8	16A	Yellow	---	---	---	---	ETL	USA
DCP-24	192	7 in. x 1.625 in. x 6 in.	6' Det. Cord	24 VDC	8	8A	Red	---	---	---	---	ETL	USA



Visit [www.lowellmfg.com](http://www.lowellmfg.com)  
for the full line of  
Distributed Audio, Power  
& Rack Solutions  
by



**LOWELL MANUFACTURING COMPANY**

100 Integram Drive, Pacific, MO 63069 USA | 800-325-9660 | 636-257-3400

[www.lowellmfg.com](http://www.lowellmfg.com) | [sales@lowellmfg.com](mailto:sales@lowellmfg.com)

©2021