

TURING SOLARSHIELD LPR

All-In-One Outdoor Solar Video Surveillance

LS-KG2-ONELP-3Y

KEY FEATURES

- ✓ Easy and rapid deployment
- ✓ NEMA enclosure System
- ✓ Smart Security, powered by Turing Vision Cloud
- ✓ NDAA Compliant 5MP Outdoor Cloud LPR Camera
- ✓ Built-in 4G/LTE router with remote network management
- ✓ Remote management (Battery Status, Battery Reboot.etc)



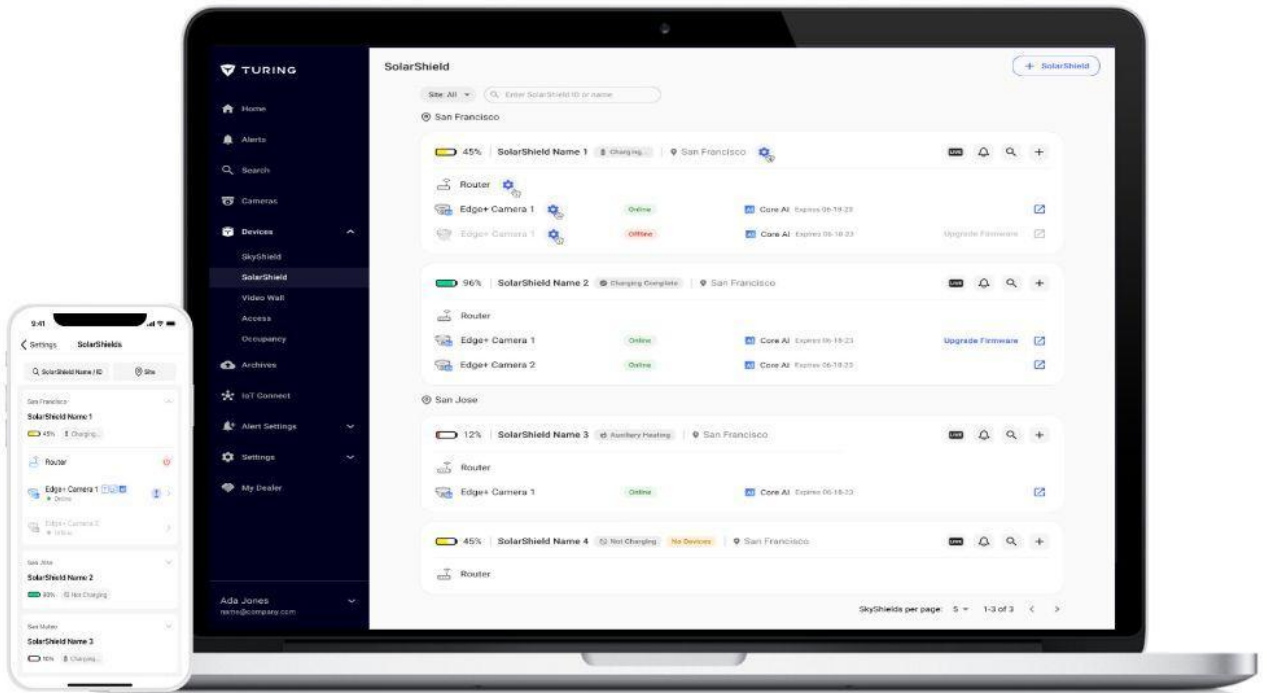
SIM Carriers



T Mobile

verizon

FIRSTNET.
Built with AT&T



KEY FEATURES

- ✔ Remote Power management including battery reboot and router reboot
- ✔ Remote status monitoring including charging status, battery status and router status
- ✔ Support Time Lapse video creation on the cloud
- ✔ Receive Instant Smart Alerts for Intruders/Trespassers/Person of Interest/Vehicle of Interest via SMS/Email/Push Notifications
- ✔ Remote Live Stream Monitoring
- ✔ Share Live Camera Streams With First Responders
- ✔ Identify and search license plates, recognize vehicle attributes, and enhance security with smart AI-powered analysis.
- ✔ View Live Footage From any Desktop / Mobile Device
- ✔ Flexible Hybrid Storage Locally or on the Cloud

GENERAL	
Dimensions (LxWxH)	Integrated Bracket: 605 × 485 x 265mm Solar Module: TL-S90W: 1000*516*35mm
Weight	Integrated Bracket: 46lbs (without camera) Support: 28lbs Solar Panel: 28lbs
Working Environment	Outdoor: -30°C~+ 60°C (-22°F~+140°F)
Rating	NEMA3R

POWER	
Standard Output Power	1x TL-S90W: 90W/18V Power/Voltage: 90W/18V
Power Interface	Integrated Bracket & Smart Controller, Solar Module and Smart Battery

BATTERY	
Battery Type	Lithium
Capacity	2x 26Ah Battery
Working Voltage	9~12.6V
Working Current	10A Max
Operating Temperatures	-30°C to 60°C (-22 F to 140°F)

Heat	
Heat	Smart battery module, supports intelligent auxiliary heating, adapts to extreme cold weather

CAMERA (EVD5LP256)	
Sensor	1/2.7" 5MP Progressive Scan CMOS
Lens	2.7-13.5mm zoom lens; F1.6~F3.3
Field of View	H: 113~31.4°D: 130.9~34.8°
Minimum Illumination	Color: 0.01Lux; 0 Lux with IR in B&W night mode
IR Range	Smart IR Range: Up to 164 ft (50 m)
IR Wavelength	Wave Length: 850nm
Wide Dynamic Range	120 dB wide dynamic range (WDR); 2D & 3D digital noise reduction
Physical I/O	Audio: Line In/Line Out; G.711/G.726; Alarm: Digital I/O; dry contact

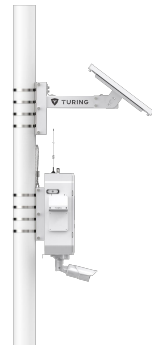
NETWORK(Cellular)	
Standard and Band	LTE FDD: B1/B3/B5/B7/B8/B20/B28 B1/B2/B3/B4/B5/B7/B8/B28 (Optional), B2/B4/B5/B12/B13/B17/B66/B71 (Optional) LTE TDD: B38/B39/B40/B41 HSPA+/HSUPA/HSDPA/WCDMA/UMTS 2100/1900/900/850MHz EV-DO: BC0 CDMA 1x: BC0 EDGE/GPRS/GSM 850/900/1800/1900MHz
Antenna Interface	Cellular: 2 * Standard SMA female antenna interface, characteristic impedance: 50 Ω
SIM/UIM Slot	Standard drawer-type user card interface

LOCAL VIDEO STORAGE	
Onboard Storage	256GB, up to 30 days* <small>*Actual retention period may vary based on scene complexity and activity</small>

VIDEO & AUDIO	
Video Compression	H.265/H.264 w/ smart encoding; MJPEG;
Resolution & Frame Rate	Main Stream: 2592x1944 (Max), 2560x1440 (Default) up to 30 FPS Sub Stream: 1280*720 up to 30 FPS Third Stream: 640*360 up to 30 FPS
Image Flip & Rotation	Normal / Vertical / Horizontal / 180° / 90° Clockwise / 90° Counterclockwise

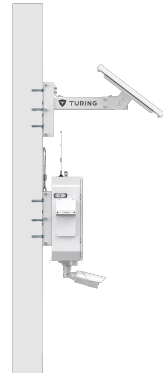
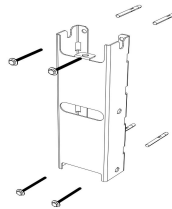
MOUNT OPTIONS Pole Mount

3.9 into 11.8 in dia Stainless Steel Adjustable Clamp x4 (Included)



MOUNT OPTIONS Wall Mount

M8 x 80
(Not included in Product)



Typical Application

Turing products are classified into three levels according to their anti-corrosion performance. Refer to the following description to choose for your using environment.

This model has NO SPECIFIC PROTECTION

Level	Description
Top-level protection	Turing products at this level are equipped for use in areas where professional anti-corrosion protection is a must. Typical application scenarios include coastlines, docks, chemical plants, and more
Moderate protection	Turing products at this level are equipped for use in areas with moderate anti-corrosion demands. Typical application scenarios include coastal areas about 1 mile away from coastlines, as well as areas affected by acid rain.
No specific protection	Turing products at this level are equipped for use in areas where no specific anti-corrosion protection is needed