

SM12DP2XA

Managed Gigabit Ethernet Fiber Switch

Quick Start Guide

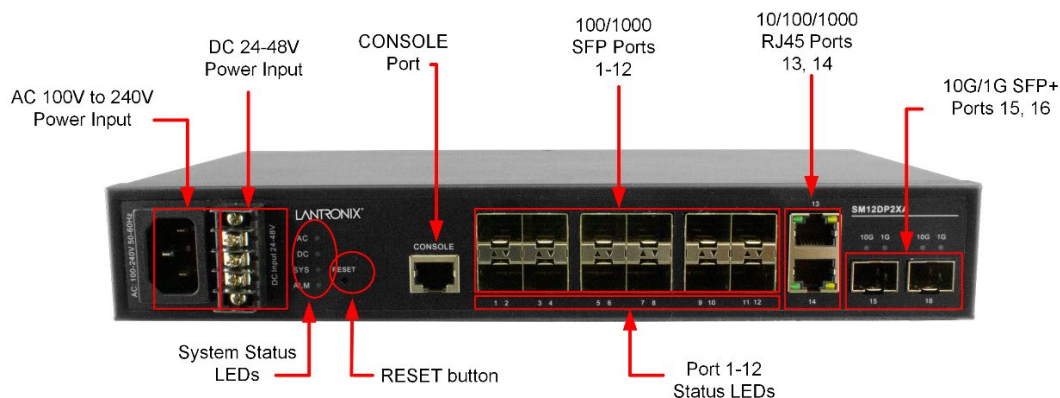


The SM12DP2XA L2+ Managed Switch is a next-generation Fiber Switch offering full suite of L2 features and additional 10GbE uplink connections. Advanced L3 features such as Static Route deliver better cost performance and lower total cost of ownership in Enterprise networks or backbone via fiber or copper connections. The SM12DP2XA provides twelve GbE SFP ports, two RJ45 ports, two 10GbE SFP+ ports and an RJ45 Console port with built-in AC and DC dual power inputs. It provides front panel access to all data and management ports in a compact form factor to facilitate desktop, wall-mount, or rack-mount installations.

See the *Install Guide* for important Cautions and Warnings, Compliance and Safety Statements, Key Features, Specifications, Front Panel, Site Preparation, Installation, Cabling, Unpacking, Mounting, Connecting to Power, Initial Switch Configuration, and Troubleshooting, Warranty, Support and Compliance information.

Unpacking: **1.** Carefully unpack all SM12DP2XA contents. **2.** Verify receipt of all SM12DP2XA components. Contact your sales representative if any items are missing. **3.** Place the SM12DP2XA and related materials near the install location. **4.** Save the SM12DP2XA shipping carton and packing materials for possible future use.

Front Panel: The switch front panel contains the power inputs, ports, LEDs and RESET button.



1000BASE-T Ports: The switch contains 10/100/1000BASE-T RJ-45 ports. All RJ-45 ports support automatic MDI/MDI-X operation, auto-negotiation and IEEE 802.3x auto-negotiation of flow control, so the optimum data rate and transmission can be selected automatically.

SFP and SFP+ Transceiver Slots: The switch supports Small Form Factor Pluggable (SFP) transceiver slots port 1 to port 12, and port 15 to port 16 are 10G SFP+. In the default configuration, if an SFP transceiver (purchased separately) is installed in a slot and has a valid link on the port, the associated RJ-45 port is disabled. The optional Gigabit SFP transceiver can be used for a backbone connection between switches, or for connecting to a high-speed server. See the specific SFP manual for important cautions and warnings.

CONSOLE Port: The switch has one RJ-45 CONSOLE port for CLI access via the provided RS232 DB9 to RJ45 Cable. **Note:** Cross-over cabling to the Console port is not supported.

Front Panel LEDs: The switch includes a LED panel for system and port indications that simplify installation and network troubleshooting. See the *Install Guide* for Port Status LED and System Status LED details.

RST (Reset) Button: press and hold for 2-7 seconds to reset or 7-12 seconds to restore to factory defaults:

Task	Press RST button for	SYS LED Behavior	Port Status LED Behavior
Reset the Switch	2 ~ 7 seconds	Blinking Green	All LEDs OFF
Restore to Defaults	7 ~ 12 seconds	Blinking Green	All LEDs stay ON

Mounting: Mount the switch in a standard 19-inch equipment rack, on a desktop, or shelf; see the *Install Guide*.

Cabling: Make sure that the cables are suitable for your operating environment. For fiber optic connections, use 50/125 or 62.5/125 micron multimode fiber or 9/125 micron single-mode fiber. For copper connections, use UTP for RJ-45 connections. For 1Gbps connections use Category 5, 5e, 6, or 6a.

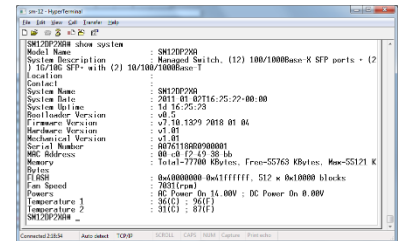
Connecting to Power: The SM12DP2XA front panel has two power inputs for power redundancy; the switch has a 100~240 VAC power socket for AC power Input and a 24-48 VDC power input via the terminal block. Using both Power Supplies provides power failover when power supplies are connected to different circuits. With fiber and copper cabling completed, and AC and/or DC power applied, the port LEDs light, the **SYS** LED flashes, the AC and/or DC LEDs light and the **SYS** LED goes from flashing to steadily lit. See the *Install Guide* for Connecting to an AC and/or DC Power source.



Initial Switch Configuration: Initial switch configuration can be via CLI or web browser. The factory defaults are IP Address: 192.168.1.77, Username: admin, and Password: admin.

CLI Configuration: The command-line interface (CLI) is a text-based interface that you can access via either a direct serial connection or a Telnet session.

An RJ-45 cable is used for connecting a terminal or terminal emulator to the SM12DP2XA RJ-45 port to access the CLI. Attach the RJ-45 serial port on the switch front panel to the cable for Telnet/CLI configuration. Attach the other end of the DB-9 cable to a PC running Telnet. See the *CLI Reference* for initial switch configuration via CLI.



Web UI Configuration: The left-hand menu contains two main tabs (Switch and DMS) each with several sub-tabs for configuring and monitoring major switch functions. The major Switch tab functions include System, Ports, DHCP, Security, VLAN, QoS, Diagnostics, and Maintenance. The DMS (Device Management System) functions are DMS Mode, Graphical Monitoring, Management, and Maintenance. See the *Web User Guide* for initial switch configuration via web browser.



Related Manuals: SM12DP2XA Install Guide 33751, Web User Guide 33752, and CLI Reference 33753.

Contact Us : Toll Free: 800-526-8766. Phone: 949-453-3990. Fax: 949-453-3995. [Technical Support](#). [Sales Offices](#).

© 2021 Lantronix, Inc. All rights reserved. No part of the contents of this publication may be transmitted or reproduced in any form or by any means without the written permission of Lantronix. Lantronix is a registered trademark of Lantronix, Inc. in the United States and other countries. Patented: patents.lantronix.com; additional patents pending. All other trademarks and trade names are the property of their respective holders.