

Flush to Floor Round Cut In Floor Box Kits with Threaded Plugs

3.5" round UL Listed non-metallic floor box for existing wood or concrete floor. Installs with 2 hole saw cuts.

| CATALOG NUMBER | UPC/DCI/NAED MFG #018997 | DESCRIPTION | UNIT PKG | STD PKG | DIM A | DIM B | DIM C | DIM D |
|---|--------------------------|---|----------|---------|-------|-------|-------|-------|
| FLB3500 | 00733 | Non-metallic round cut-in box for existing wood or concrete floor | 4 | 4 | 3.968 | 3.000 | 3.318 | 1.250 |
| KITS WITH METAL COVERS, THREADED PLUGS | | | | | | | | |
| FLB3520MB | 00734 | Brass | 1 | 1 | 3.995 | 3.000 | 2.500 | .169 |
| FLB3520NL | 00735 | Nickel plated brass | 1 | 1 | 3.995 | 3.000 | 2.500 | .169 |
| CARPET RINGS | | | | | | | | |
| FLB3550MB | 00738 | Brass | 1 | 1 | 5.137 | 3.110 | 4.291 | .374 |
| FLB3550NL | 00739 | Nickel plated brass | 1 | 1 | 5.137 | 3.110 | 4.291 | .374 |
| OVERSIZED TRIM RINGS | | | | | | | | |
| FLB3570MB | 00740 | Brass | 1 | 1 | 7.141 | 3.109 | 4.143 | .450 |
| FLB3570NL | 00741 | Nickel plated brass | 1 | 1 | 7.141 | 3.109 | 4.143 | .450 |
| TRIM KITS WITH METAL COVERS | | | | | | | | |
| FLB3520MBTK | 00736 | 4" Round, Brass | 1 | 1 | 3.995 | 3.000 | 2.500 | .169 |
| FLB3520NLTK | 00737 | 4" Round, Nickel plated brass | 1 | 1 | 3.995 | 3.000 | 2.500 | .169 |

 PATENTS PENDING.
E170558

*Electrical conduit must be accessible from underneath floor if installing in concrete.

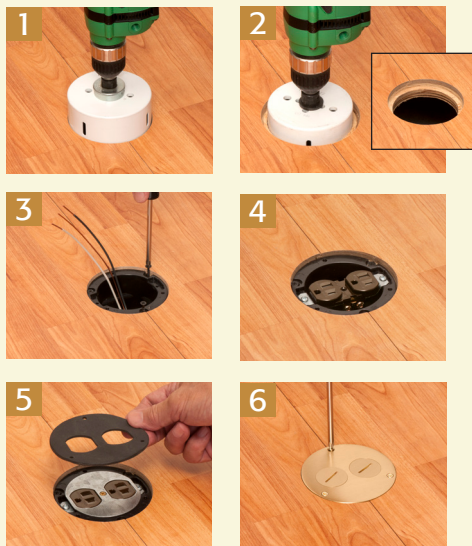
FEATURES AND BENEFITS

- Hide miscut flooring, cover edges of cut carpet, and get a neater finish with an oversized ring or carpet ring to match your cover
- Easy to install in existing wood or concrete* floor

FLB3520 FLOOR BOX KITS INCLUDE

UL listed non-metallic floor box, round metal cover in brass or Nickel plated brass, non-metallic gasket support plate, gasket, UL listed 15 amp TR duplex receptacle, NM942 cable connector, (3) #8 x 1/2" flat head screws, and (1) #6 x 1/2" screw

INSTALLATION INSTRUCTIONS



- 1) Using a 4" diameter hole saw, cut opening in floor approximately 1/2" deep, taking care to avoid structural framing members.
- 2) Next, use a 3-1/2" hole saw to cut through the remaining flooring/subfloor, creating a shelf at the desired depth of the box. Remove material that remains between the saw cuts.
- 3) Pull cable. Install in box with supplied cable connector. Attach box to floor with (3)#6 x 1-1/4" wood screws (not supplied) through the U-shaped cut outs in the box flange.
- 4) Wire receptacle. Install box.
- 5) Attach non-metallic gasket support plate to receptacle with #6 x 1/2" screw. Install gasket.
- 6) Attach cover to box with (3) #8 x 1/2" flat head machine screws.

