

GV-GBL12811 AI 12MP H.265 4.3x Zoom Super Low Lux WDR IR Bullet IP

Camera



- AI deep learning: AI Perimeter Protection & Classification (Human, Vehicle)
- 1/1.7" progressive scan CMOS sensor
- Min. illumination at 0.006 lux
- Five streams from H.265, H.264 and MJPEG
- Up to 30 fps at 4000 x 3000
- Intelligent IR
- IR distance up to 70 m (230 ft)
- Day and Night function (with removable IR-cut filter)
- Two-way audio capable
- Built in microphone
- Built-in micro SD card slot (SDHC / SDXC / UHS-I, Class 10) for local storage
- Ingress protection (IP67)
- Vandal resistance (IK10 for metal casing)
- DC 12V / PoE (IEEE 802.3af)
- Defog
- 3D noise reduction
- AI analytics (Line Crossing, Region Entrance, Region Exiting, Region Intrusion, Target Counting, Heat Map, Video Metadata, Loitering Detection, Illegal Parking, Face Detection)
- Motion detection (Including Effective Target: Human, Motor Vehicle)
- Text overlay
- Privacy mask
- 19 languages supported
- ONVIF (Profile G, S, T, M) conformant

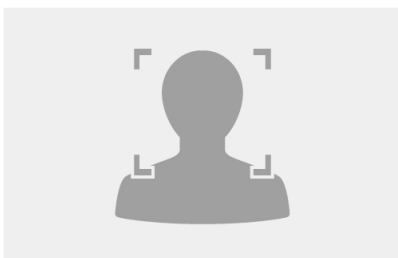
Introduction

GV-GBL12811 is a 12 MP outdoor bullet IP camera, equipped with automatic IR-cut filter and IR LEDs for day and night surveillance. The camera supports H.265 video codec to achieve better compression ratio while maintaining high quality pictures at reduced network bandwidth. GV-GBL12811 adheres to IP67 and IK10 standards, and can be powered through PoE.

Empowered by deep learning algorithms, AI technology distinguishes human and vehicles from other moving objects. Integrated with GeoVision Video Management Software (GV-VMS), it supports AI perimeter protection, real-time alert, playback and more.

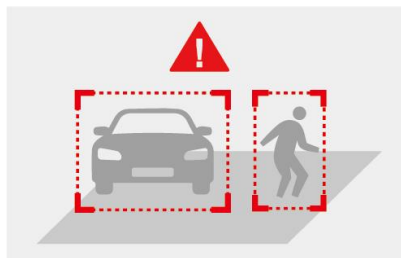
Deep Learning Function

Face Detection

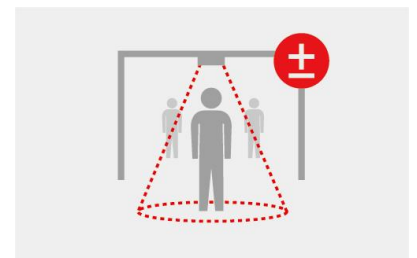


AI Perimeter Protection

(Region Intrusion, Line Crossing, Region Entrance, Region Exiting)



People Counting



Specifications

Camera					
Image Sensor		1/1.7" progressive scan CMOS			
Picture Elements		4000 (H) x 3000 (V)			
Minimum Illumination	Color	0.006 Lux (F1.4, AGC ON)			
	IR On	0 Lux			
Shutter Speed		Automatic, Manual (1/3 ~ 1/100000 sec)			
White Balance		Automatic, Manual			
Gain Control		Automatic, Manual			
S/N Ratio		50 dB			
WDR Pro		No			
Dynamic Range		75 dB			
Lens					
Megapixel		12 MP			
Day/Night		Yes (with removable IR-cut filter)			
Focal Length		2.8-12 mm			
Lens Type		Motorized			
Maximum Aperture		F/1.4			
Mount		Ø14			
Horizontal FOV		96° - 46°			
Operation	Focus	Auto / Manual			
	Zoom	4.3x			
	Iris	DC			
IR LED Quantity		4 IR LEDs			
Max. IR Distance		70 m (230 ft)			
DORI		Detect	Observe	Recognize	Identify
Lens	2.8-12 mm (W)	86 m (282.1 ft)	34 m (111.5 ft)	17 m (55.7 ft)	9 m (29.5 ft)
	2.8-12 mm (T)	190 m (623.3 ft)	76 m (249.3 ft)	38 m (124.6 ft)	19 m (62.3 ft)
Operation					
Video Compression		H.265, H.265+, H.264, H.264+, MJPEG			
Video Streaming		Five streams			
Video Resolution	Main Stream	4000 x 3000 (Default), 3840 x 2160, 3200 x 1800, 2688 x 1520, 1920 x 1080			
	Sub Stream	1920 x 1080, 1280 x 960 (Default), 1280 x 720, 704 x 576, 704 x 480, 640 x 360			
	Third Stream	1280 x 720 (Default), 704 x 576, 704 x 480, 640 x 480, 640 x 360, 480 x 240, 352 x 288, 352 x 240			
	Four Stream	704 x 480 (Default), 704 x 576, 640 x 480, 640 x 360, 480 x 240, 352 x 288, 352 x 240			
	Five Stream	704 x 480 (Default), 704 x 576, 640 x 480, 640 x 360, 480 x 240, 352 x 288, 352 x 240			
Frame Rate	30 fps at 4000 x 3000 / 3840 x 2160 / 3200 x 1800 / 2688 x 1520 / 1920 x 1080 / 1280 x 960 / 1280 x 720 / 704 x 480 / 640 x 480 / 640 x 360 / 480 x 240 / 352 x 240 (60 Hz)				
	25 fps at 4000 x 3000 / 3840 x 2160 / 3200 x 1800 / 2688 x 1520 / 1920 x 1080 / 1280 x 960 / 1280 x 720 / 704 x 576 / 640 x 480 / 640 x 360 / 480 x 240 / 352 x 288 (50 Hz)				
	* The frame rate and performance may vary depending on the number of connections and data bitrates (different scenes).				
Maximum Throughput	AI off	64 Mbps			
	AI on	12 Mbps			
Maximum Stream	AI off	10 * When the total bitrate is within the maximum throughput			
	AI on	N/A			
Video Analytics		Motion Detection (including effective target: human, Motor Vehicle), Object Abandoned / Missing Detection, Video Exception Detection			
Smart Alarm		Motion Detection, SD Card Error, SD Card Full, IP Address Conflict, Cable Disconnection, Scene Change Detection, Video Blur Detection, Abnormal Color Detection			
Image Setting		Brightness, Contrast, Hue, Saturation, WDR, Sharpness, Defog, 3D Noise Reduction, BLC, Antiflicker, White Balance, Shutter, Gain, Image Orientation (Flip, Mirror, 0°, 90°, 180°, 270°-including Corridor format).			

Audio Compression	G.711		
Audio Support	Two-way audio (external speaker required)		
Digital I/O	Input	1 Input, dry contact, NO / NC	
	Output	1 Relay Output (1A 30V DC / 0.3A 125V AC)	
Deep Learning Function			
AI Analytics	<p>Face Event: Face Detection</p> <p>Smart Event:</p> <ul style="list-style-type: none"> - Line Crossing, Region Entrance, Region Exiting, Region Intrusion, Target Counting, Heat Map, Video Metadata - Loitering Detection, Illegal Parking Detection <p>*A maximum of 2 smart detection functions are suggested at a time to ensure comprehensive detection results and the optimized performance by the camera.</p> <p>*Face Event and Smart Event can only be enabled one a time.</p>		
Network			
Interface	10/100 Ethernet		
Protocol	802.1x, DDNS, DHCP, FTP, HTTP POST, HTTP, HTTPS, IPv4, IPv6, NTP, ONVIF (Profile G, S, T, M), PPPoE, QoS, RTCP, RTMP, RTP, RTSP, SMTP, SNMP, UDP, UPnP		
Mechanical			
Camera Angle Adjustment	Pan	0 ~ 360°	
	Tilt	0 ~ 90°	
	Rotate	0 ~ 360°	
Connectors	Power	DC jack, PoE	
	Ethernet	RJ-45	
	Audio	Built-in microphone	Yes
		External microphone required	Yes (Audio jack, 3.5mm)
		Built-in speaker	No
		External speaker required	Yes (Audio jack, 3.5mm)
		* For devices with microphone or speaker, choose either the built-in or external option.	
	* If equipped with an Audio In port, it only supports microphones with power supply.		
	Video Output	CVBS output (BNC connector x 1)	
	Digital I/O	4-pin terminal block pitch 3.5 mm (0.14")	
Local Storage	Micro SD card slot (SDHC / SDXC / UHS-I, Class 10) * UHS-II card type is not supported.		
General			
Operating Temperature	-30~ 60°C (-22 ~ 140°F)		
Humidity	0 ~ 95% (no condensation)		
Power Source	12V DC, 1.5A / PoE (IEEE 802.3af)		
Max. Power Consumption	12 W		
Dimensions	272.3 x 94.9 x 88.9 mm (10.72 x 3.73 x 3.5")		
Weight	1.12 kg (2.47 lb)		
Ingress Protection	IP67		
Vandal Resistance	IK10 for metal casing		
Certification	CE, FCC, RoHS, UKCA compliant		
Web Interface			
Installation Management	Web-based configuration		
Maintenance	Firmware upgrade through Web Browser or Utility		
Access from Web Browser	Live View, Playback, Video Recording, Image Quality, Bandwidth Control, Image Snapshot, Digital Zoom, Text Overlay, Image Masking, Intelligent Mark		
Language	Hungarian, English, Spanish, Spanish (LA), Italian, Portuguese, Russian, Polish, Romanian, Hebrew, German, French, Dutch, Norwegian, Czech, Turkish, Japanese, Korean, Traditional Chinese		

Software Applications	
Software Supported	GV-VMS (V17.4.8 with Patch or later, V18.3.4 with Patch or later), GV-Edge Recording Manager (V2.2.8 or later), GV-Control Center (V4.2.1 or later), GV-Recording Server (V2.1.1 with Patch or later)
Smart Device Access	GV-Eye for iOS and Android (V3.2.0 or later)
Live Viewing	Web Browser (Edge 120.0.2210.121, Chrome 120.0.6099.200, Firefox 121.0, Safari 11), Mobile App




Note:

1. Industrial-grade micro SD cards are recommended to avoid event recordings writing failure.
2. All specifications are subject to change without notice.

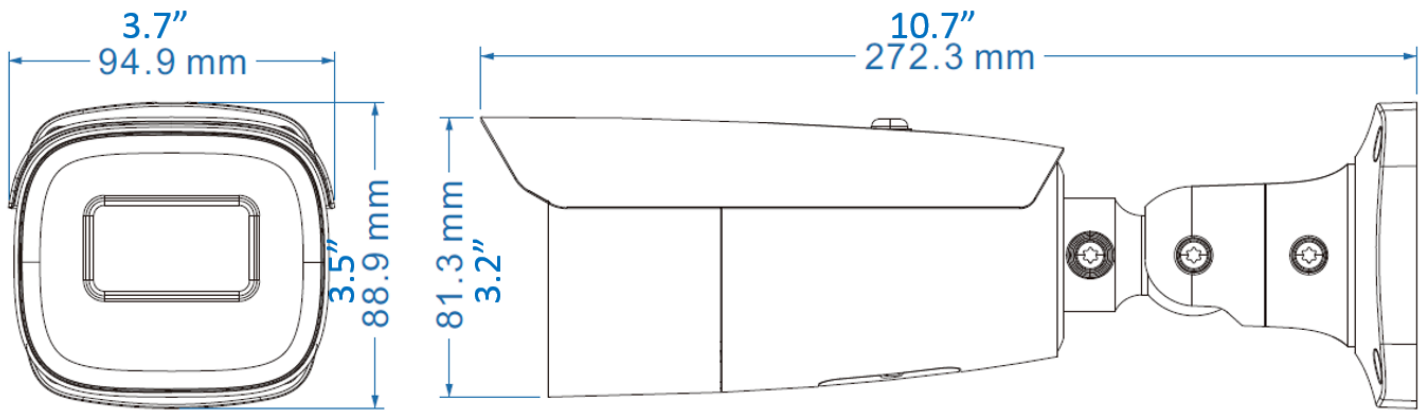
Packing List

- | | |
|-----------------------|--------------------------|
| 1. GV-GBL12811 Bullet | 4. Drill Template Paster |
| 2. Hex Key | 5. CVBS & DC IN Cables |
| 3. Screw Kit | 6. Download Guide |

Accessories

Model No.	Name	Details
GV-Mount506	Junction Box	 <p>Dimensions: 139.3 x 50 mm (5.48" x 1.97") Weight: 0.512kg (1.13lb)</p>
GV-PA191	PoE Adapter	 <p>GV-PA191 is a Power over Ethernet (PoE) adapter designed to provide power to the IP device through a single Ethernet cable.</p>
GV-PA301	Gigabit PoE Adapter	 <p>GV-PA301 is a Gigabit Power over Ethernet (PoE) adapter.</p>
GV-POE Switch		GV-POE Switch is designed to provide power along with network connection for IP devices. The GV-POE Switch is available in various models with different numbers and types of ports.
Power Adapter		Contact our sales representatives for the countries and areas supported.

Dimensions



Mounting Type

