

# VIGI Intelligent Surveillance Solutions



# Solutions for Retail

## Challenges

The retail industry faces significant security challenges such as theft, lack of efficiency across outlets, and declining profitability and sales. These concerns impair not just financial outcomes but also operational effectiveness for retailers.



**High Security Risks**

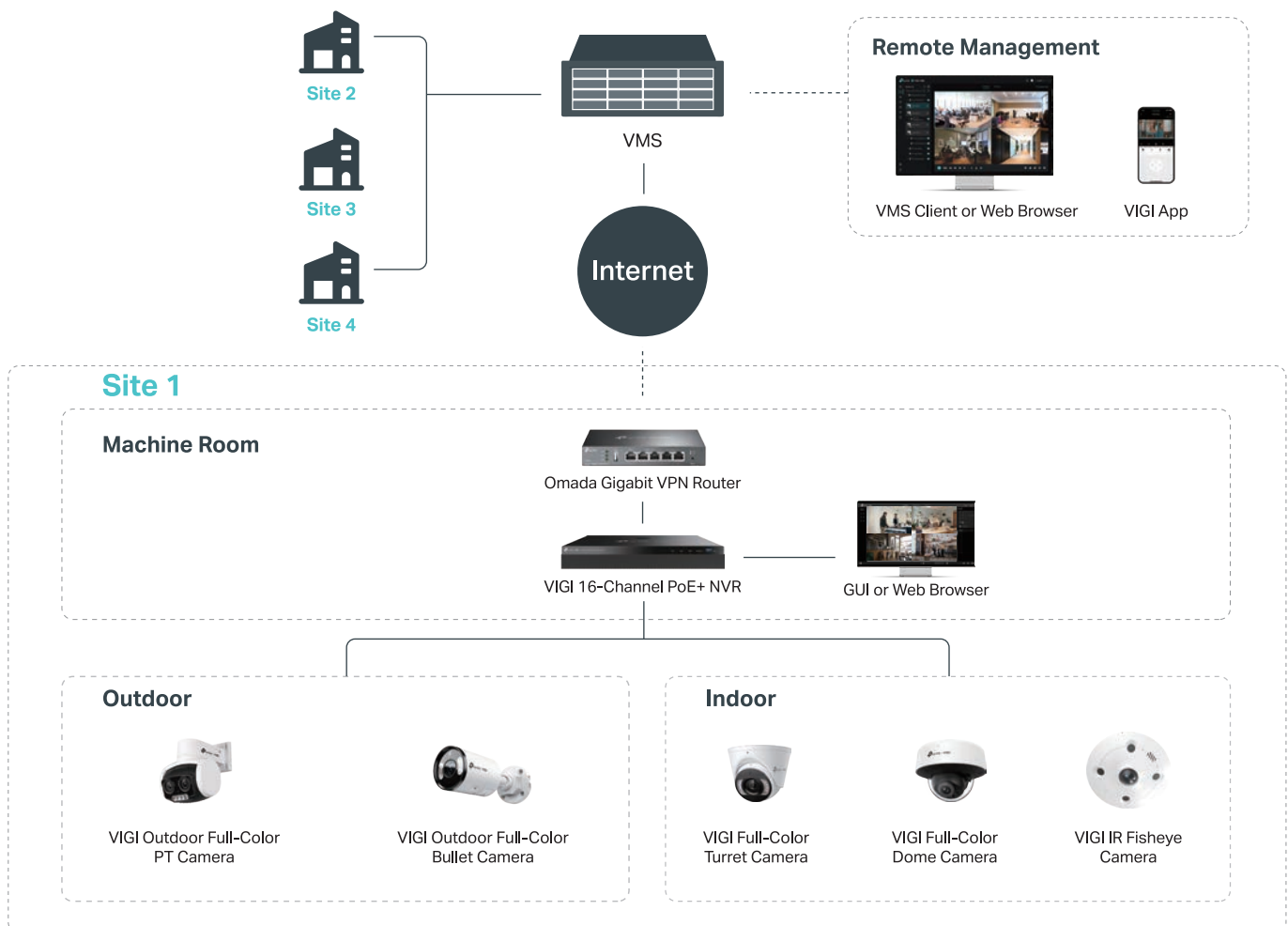


**Insufficient Sales & Profits**



**Difficult Chain Store Management**

## Solution Overview



# Highlights

## ▶ AI Detection for Loss Prevention

Accurately identifies and alerts you to potential threats, saving manual monitoring cost and allowing for quicker response.



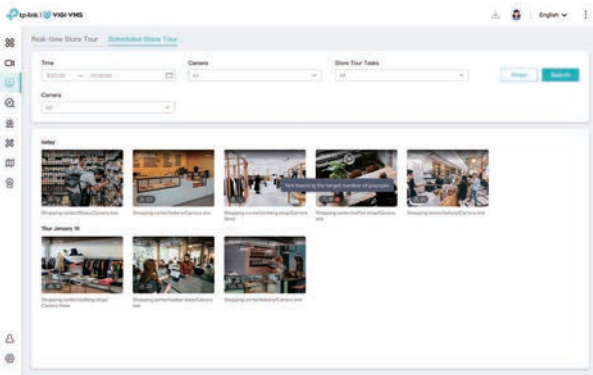
## ▶ Crowd Control

Automatically detect crowd gathering zones, identify potential safety hazards in advance, and enhance on-site safety.



## ▶ Quick Tour for Efficient Chain Store Management

Saves on manual tour costs and boosts efficiency by offering real-time and scheduled store tours.



## ▶ Cloud VMS for Effortless Store Expansion

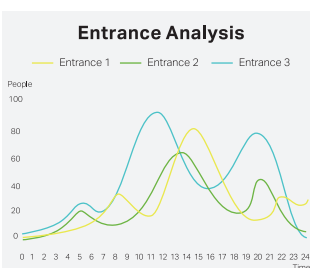
Grow your business with the VIGI Cloud VMS. Easily deploy surveillance networks in your new chain stores and seamlessly add sites and devices to the system.



## ▶ Promote Profits

### Flow Analytics

Get business insights from customer traffic statistics and dynamically adapt your business strategies accordingly.



### People Counting

Counts customer entrances and exits with high accuracy, providing valuable insights for optimizing space, staffing, and marketing efforts.



### Density Heat Map

Easily identify both "hot spots" and "dead zones" to optimize merchandise displays.



### Pathway Analytics

Find high-traffic locations from the routes of customers and make sales strategies.



# Solutions for Hotel

## Challenges

Hospitality surveillance systems need to prioritize guest and property security. However, the scenarios usually have strong fluidity of people and insufficient blind spot coverage, which increase the risks of safety issues.



**Monitoring Blind Spots**

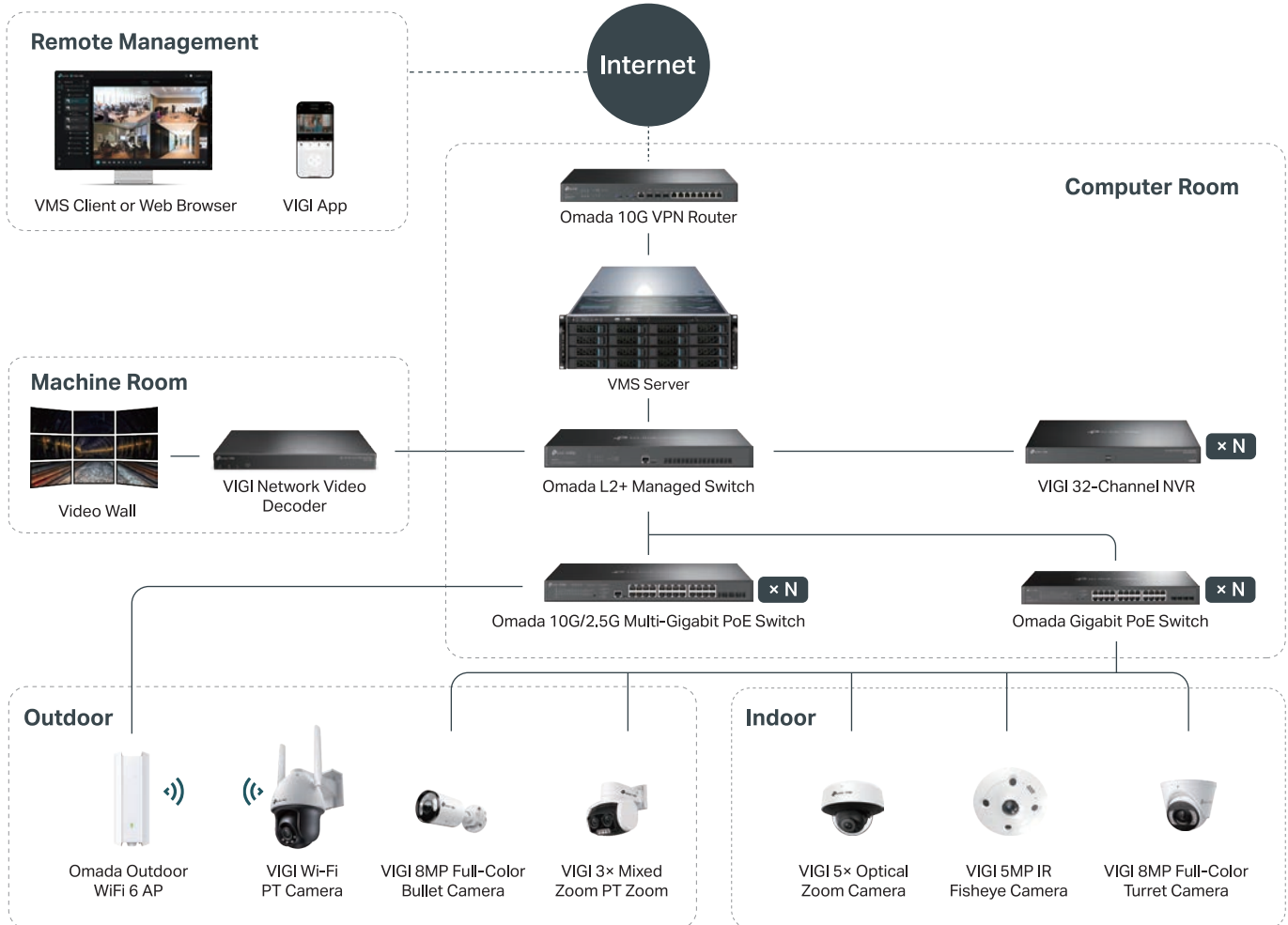


**Complicated Personnel**



**Untimely Security Response**

## Solution Overview

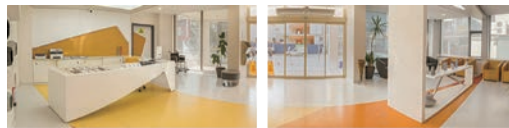


## Highlights

### ► Improve Monitoring Efficiency

#### Wide-Angle Imaging

Achieves seamless 32:9 ultra-wide coverage in wide areas like lobbies without overlap or gaps in the middle.



Left Lens

Right Lens



Dual-Lens Wide-Angle Imaging

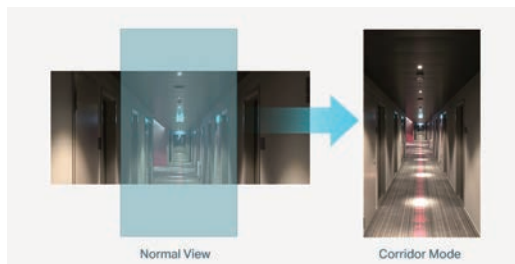
#### Ultra Low-Light Imaging

VIGI AI ISP-powered ColorPro Night Vision technology captures vivid colors along with sharp images in ultra low-light conditions.



#### Corridor Mode

Helps you monitor long and narrow areas like corridors while providing a more natural viewing experience.



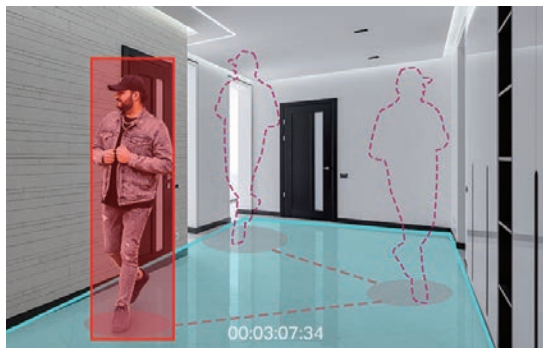
Normal View

Corridor Mode

### ► Professional AI Event Detection

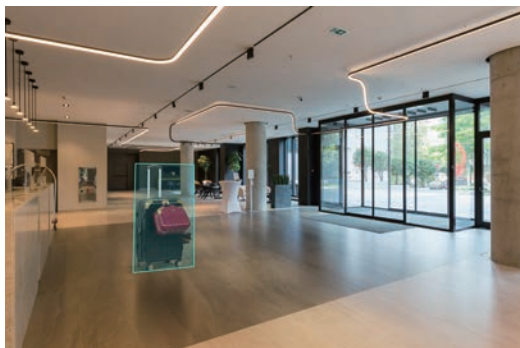
#### Loitering Detection

Detect suspicious individuals loitering in an area for a set time period and receive advanced warnings.



#### Abandoned Object Detection

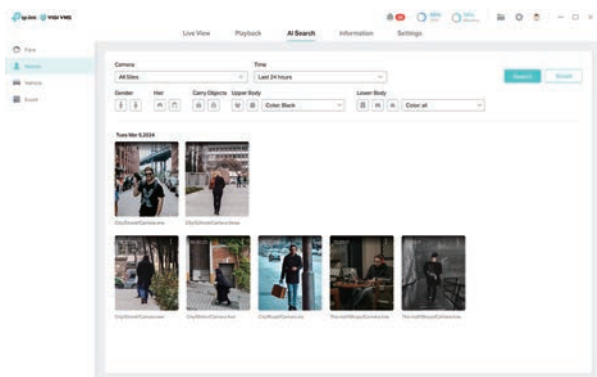
Detects unattended objects in public places and alerts you for timely action. Suitable for hotel lobbies, entrances, and exits.



### ► Smart Search for Efficient Event Backtracking

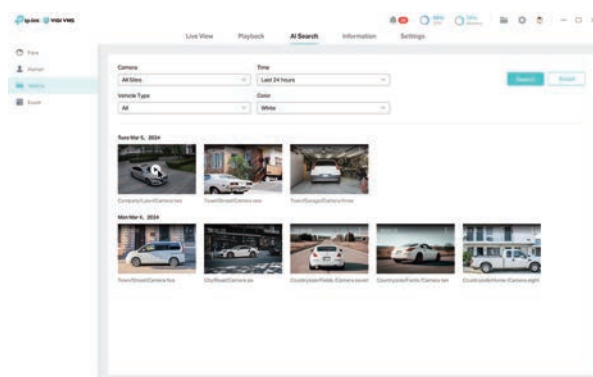
#### By Human Attributes

Filter people of interest by various attributes, such as hair length and clothing color for improved searching efficiency.



#### By Vehicle Attributes

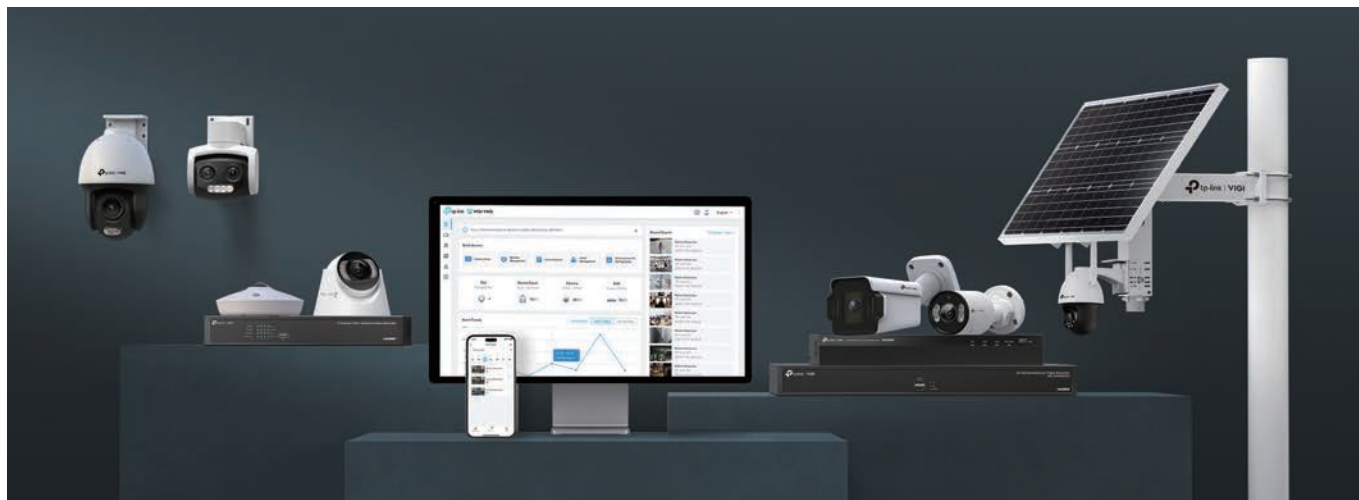
Identify and search for vehicles of interest based on vehicle color and type for targeting meaningful events in a short time.



# VIGI Solution's Strengths

## One-Stop Solution with Comprehensive Options

VIGI offers complete surveillance products for small and mid-sized businesses such as cameras, network video recorders, and decoders—ideal for use in hotels, schools, restaurants, offices, and more.



## Trusted Quality



### Continuous Innovations

Independent R&D enables us to quickly respond to market changes.



### Superior Suppliers

We strictly vet suppliers and use materials manufactured by the world's top suppliers.



### Vertical Integration

We operate in-house manufacturing facilities to maintain a high standard of every component.



### Complete Quality Control

We develop, build, craft, and sell products from start to finish to maintain strict quality control.

## Superb Support

### ▶ Superb Pre-Sales Services



#### Certification and Training (TPSA)

Designed for surveillance practitioners



#### Lightweight Designer Tools

A few simple steps to create a simulated deployment plan

### ▶ Superb After-Sales Services



#### Replacement and Warranty



#### Dedicated Online Support

Get dedicated support from our SMB Hotline, Email, and Live Chat. The VIGI support team is always here for you.



#### Localization Support Teams



#### Official Community

Our official community services include timely Q&A and authoritative information

## Partner Program



<https://partner.tp-link.com/us/>

Join TP-Link SolutionX Partner Program to get better support and more profit.

# Specifications

Product Type	Bullet Camera							Dome Camera	Fisheye Camera
Product Image									
Product Model	VIGI C385DPS	VIGI C385	VIGI C345ZI	VIGI C345S	VIGI C345-4G	VIGI C345	VIGI C340S	VIGI C245	VIGI C655I
Pixels	8MP, ColorPro	8MP, Full-Color	4MP, IR	4MP, ColorPro	4MP, Full-Color	4MP, Full-Color	4MP, ColorPro	4MP, Full-Color	5MP, IR
Image Sensor	1/1.8"	1/2.7"	1/2.7"	1/1.8"	1/3"	1/2.7"	1/1.8"	1/2.7"	1/2.7"
Aperture	F1.0	F1.6	F1.6	F1.0	F1.6	F1.6	F1.0	F1.6	F2.0
Focal Length	-	2.8/4mm	2.7 to 13.5mm, 5× Optical Zoom	4mm	4mm	2.8/4/6mm	4mm	2.8/4mm	1.4mm
Min. Illumination	Color: 0.0005 Lux; 0 Lux with White Light	Color: 0.005 Lux; 0 Lux with IR/White Light	Color: 0.01 Lux; 0 Lux with IR	Color: 0.0005 Lux; 0 Lux with White Light	Color: 0.005 Lux; 0 Lux with IR/White Light	Color: 0.005 Lux; 0 Lux with IR/White Light	Color: 0.0005 Lux; 0 Lux with White Light	Color: 0.005 Lux; 0 Lux with IR/White Light	Color: 0.01 Lux; 0 Lux with IR
Video Compression	H.265+/H.264+/H.265/H.264								
Smart Detection <sup>1</sup>	•	•	•	•	•	•	•	•	•
Human & Vehicle Classification	•	•	•	•	•	•	•	•	•
People & Vehicle Analytics*	•	-	•	•	-	•	•	•	-
Facial Recognition*	-	-	•	•	-	-	•	-	-
People Counting	•	-	-	-	-	-	-	-	•
WDR**	120dB	120dB	120dB	120dB	120dB	120dB	120dB	120dB	100dB
Built-in Microphone	•	•	•	•	•	•	•	•	•
Built-in Speaker	•	•	-	•	•	•	•	•	•
microSD Card Slot	Yes, up to 512 GB								
Network	Ethernet	Ethernet	Ethernet	Ethernet	4G, Ethernet	Ethernet	Ethernet	Ethernet	Ethernet
Protection	IP67	IP67	IP67	IP67	IP66	IP67	IP67	IP67, IK10	IP67, IK10
Power Supply	DC 12V; PoE	DC 12V; PoE	DC 12V; PoE	DC 12V; PoE	DC 12V	DC 12V; PoE	DC 12V; PoE	DC 12V; PoE	DC 12V; PoE

Product Type	Turret Camera						PT Camera		
Product Image									
Product Model	VIGI C485PI	VIGI C485	VIGI C455	VIGI C445ZI	VIGI C445S	VIGI C445	VIG C540V**	VIGI C540S	VIGI C540-4G
Pixels	8MP, IR	8MP, Full-Color	5MP, Full-Color	4MP, IR	4MP, ColorPro	4MP, Full-Color	4MP, Full-Color	4MP, ColorPro	4MP, Full-Color
Image Sensor	1/2.7"	1/2.7"	1/2.7"	1/2.7"	1/1.8"	1/2.7"	1/3"	1/1.8"	1/3"
Aperture	F2.0	F1.6	F1.6	F1.6	F1.0	F1.6	F1.6	F1.0	F1.6
Focal Length	1.4mm	2.8/4mm	2.8/4mm	2.7 to 13.5mm, 5× Optical Zoom	4mm	2.8/4mm	4 to 12mm, 3× Mixed Zoom	4mm	4mm
Min. Illumination	Color: 0.01 Lux; 0 Lux with IR	Color: 0.005 Lux; 0 Lux with IR/White Light	Color: 0.005 Lux; 0 Lux with IR/White Light	Color: 0.01 Lux; 0 Lux with IR	Color: 0.0005 Lux; 0 Lux with White Light	Color: 0.005 Lux; 0 Lux with IR/White Light	Color: 0.005 Lux; 0 Lux with IR/White Light	Color: 0.0005 Lux; 0 Lux with White Light	Color: 0.005 Lux; 0 Lux with IR/White Light
Video Compression	H.265+/H.264+/H.265/H.264								
Smart Detection <sup>1</sup>	•	•	•	•	•	•	•	•	•
Human & Vehicle Classification	•	•	•	•	•	•	•	•	•
People & Vehicle Analytics*	•	-	•	•	•	•	-	•	-
Facial Recognition*	-	-	-	•	•	-	-	•	-
People Counting	•	-	-	-	-	-	-	-	-
WDR**	120dB	120dB	120dB	120dB	120dB	120dB	DWDR	120dB	DWDR
Built-in Microphone	•	•	•	•	•	•	•	•	•
Built-in Speaker	•	•	•	-	•	•	•	•	•
microSD Card Slot	Yes, up to 512GB								
Network	Ethernet	Ethernet	Ethernet	Ethernet	Ethernet	Ethernet	Ethernet	Ethernet	4G, Ethernet
Protection	IP67	IP67	IP67	IP67	IP67	IP67	IP66	IP66	IP66
Power Supply	DC 12V; PoE	DC 12V; PoE	DC 12V; PoE	DC 12V; PoE	DC 12V; PoE	DC 12V; PoE	DC 12V; PoE	DC 12V; PoE	DC 12V





<sup>1</sup> When both functions are enabled, only DWDR is supported. They cannot be enabled simultaneously. To use these functions, the device must be paired with an NVR that supports Smart Analysis.


<sup>\*\*</sup> This product's zoom function is achieved through hybrid zoom.


<sup>\*</sup> Smart Detection refers to multiple AI detections and may vary based on product models and versions. AI detections include Abnormal Sound Detection, Scene Change Detection, Loitering Detection, Object Abandoned Detection, Object Removal Detection, Intrusion Detection, Line-Crossing Detection, Region Exiting Detection, Region Entering Detection, Vehicle Detection, and Human Detection.


<sup>†</sup> All specifications are subject to change without notice.

# Specifications

Product Type	Network Video Recorder			
Product Image				
Product Model	VIGI NVR4032H	VIGI NVR2016H-16MP-4TB	VIGI NVR2008H-8MP-2TB	VIGI NVR1004H-4P-2TB
Network Video Access Bandwidth	320 Mbps	80 Mbps	80 Mbps	80 Mbps
Network Video Input	32 Channels	16 Channels	8 Channels	4 Channels
Network Interface	2× 1000Mbps	1× 1000Mbps	1× 100Mbps	1× 100Mbps
PoE Interface	-	16× 10/100 Mbps PoE Budget 140W 802.3 af/at	8× 10/100 Mbps PoE Budget 93W 802.3 af/at	4× 10/100 Mbps PoE Budget 53W 802.3 af/at
Video Compression	H.265+/H.264+/H.265/H.264			
Smart Analysis	AI Search; Face Recognition by Cameras			
Decoding Capability	32-ch @720P, 16-ch @ 1080P	16-ch @ 720P, 2-ch @ 8MP	8-ch @ 2MP, 4-ch @ 4MP	4-ch @4MP
Recorded Resolution	Up to 4K (8MP)			
Video Interface	1× HDMI & 1× VGA Independent Output	1× HDMI; 1× VGA	1× HDMI; 1× VGA	1× HDMI; 1× VGA
Hard Drive	4× SATA interfaces (Max 10 TB for each)	2× SATA interfaces (Max 10 TB for each, 4TB HDD Preinstalled)	2× SATA interfaces (Max 10 TB for each, 2TB HDD Preinstalled)	1× SATA interfaces (10TB Max, 2TB HDD Preinstalled)
eSATA	-	1	1	-
Power Supply	100 to 240 VAC, 50 to 60 Hz, 1.5 A	DC 53.5 V, 3.37 A	DC 53.5 V, 2.43 A	DC 53.5 V, 1.31 A

Product Type	Network Video Decoder
Product Image	
Product Model	VIGI NVD6004
Video Input	2× 4K HDMI
Video Output	4× 4K HDMI
Total Video Decoding	8ch@12MP(30fps) / 16ch@8MP (30fps) / 32ch@4MP (30fps) / 64ch@1080P (30fps) / 128ch@D1 (30fps)
Split Screen	Access up to 4 screens and support any splicing
Video Format	H.265+/H.265/H.264/MPEG4/MPEG2/MJPEG
Audio Format	G.711A, G.711U
Network Interface	2× RJ45 interfaces
Management	Supports VMS and Web GUI Management

Product Type	Network Video Storage Server
Product Image	
Product Model	VIGI NVS8024
Hardware	<ul style="list-style-type: none"> <li>Processor: Intel multi-core processor</li> <li>Memory: 16GB</li> <li>Hard Disk Bays: 24</li> <li>Maximum Hard Drive Capacity: 16TB</li> <li>Hot Swap: Supported</li> </ul>
Software	<ul style="list-style-type: none"> <li>Network Access Bandwidth: 3000Mbps</li> <li>Disk Array: RAID0/RAID1/RAID5/RAID6/RAID10</li> <li>Protocols: IPV4, DNS, ONVIF, SMB, FTP, ISCSI, RTSP, NTP, HTTP, TCP, VMS</li> </ul>
Video Parameters	<ul style="list-style-type: none"> <li>Maximum Video Access Channels: 1024 Channels</li> <li>Video Compression: H.264, H.265, H.265+</li> <li>Video Resolutions: 8MP, 5MP, 4MP, 3MP, 1080P, UXGA, 720P, VGA, 4CIF, DCIF, 2CIF, CIF, QCIF</li> </ul>
Interfaces	<ul style="list-style-type: none"> <li>Video Output: 2× HDMI</li> <li>Console Interface: Yes, 1× RJ45</li> <li>Audio In/Out: Yes, 3.5mm × 2</li> <li>Network Interface: 2× 10/100/1000 Mbps Adaptive RJ45 Interfaces</li> </ul>

Product Type	Solar Power Supply System
Product Image	
Product Model	VIGI SP9030
Solar Panel Power	90W
Battery Capacity	31.2Ah@10.8V Ternary Lithium
Operating Temperature	Charging: -30°C~45°C (With intelligent auxiliary heat) Discharging: -30°C~60°C (With intelligent auxiliary heat)
Panel Adjust Angle	5°/15°/25°/35°/45°/55°
Software Features	Load Control, Battery Overtemperature Protection, Battery Level Display, Generation Power Display, Load Power Display, Generation Power and Load Power Statistics, Time Zone Selection, Region Selection, Daylight Savings, Firmware Remote Update, Remote Reboot
Output	Output 1&2: 9~12.6V/2A, Output 3: 12V/2A
Network Interface	1× RJ45 interface, 10/100 Mbps adaptive
Protection	IP66



Learn more about VIGI products

\*All specifications are subject to change without notice.

Specifications are subject to change without notice. TP-Link and VIGI are registered trademarks of TP-Link USA Corporation. Other brands and product names are trademarks or registered trademarks of their respective holders. Copyright © 2024 TP-Link USA Corporation. All rights reserved. PN: 8392501214