

Perimeter Intrusion Detection Systems

# G-FENCE 3000

Solar-powered Fence-Mounted Intrusion Detection System



### System Components

- 40670002 Control Unit Solar Powered (Maximum 16 per comm port) UG
- 40670003 Termination / Link Unit - UR/UT
- 40670013 100m roll of detector cable including 40 sensors (black)
- 93408901 100m roll of detector cable with 40 reinforced sensors
- 82200148 Metallic tie wraps (bag of 100)
- 93375007 Tie wraps - 26A1010 (bag of 1000) - 1 bag for 2 rolls of cable
- 24-92079-100 Stainless steel heavy duty metal tie gun for G-Fence
- 35209301-P Lightning surge protection. Wired on the RS 485 between Maxibus hub and Control Unit (UG)

### Network Interface Accessories

- 30792001 MAXIBUS UNIVERSAL 2 comm port (MODBUS + TCP IP outputs) 1 to 8 extension cards; 8-relays outputs (optional)
- 30704002 MAXIBUS UNIVERSAL 4 comm port (1 to 4 ports when TCP IP outputs is used or 1 to 3 ports when MODBUS RTU outputs used) for 1 to 8 extension cards 8-relays outputs (optional)
- 30792011 MAXIBUS UNIVERSAL 2 comm port (MODBUS + TCP IP outputs) for 1 to 16 extension cards 8-relay outputs (optional)
- 30792012 MAXIBUS UNIVERSAL 4 comm port (1 to 4 ports when TCP IP outputs used or 1 to 3 ports when MODBUS RTU outputs used) for 1 to 16 extension cards 8-relays outputs (optional)
- 38703901 Graphical set-up tool (Mandatory with G-FENCE 3000 to set-up and create zones)
- 35588419 8 relay extension card (installed in factory)

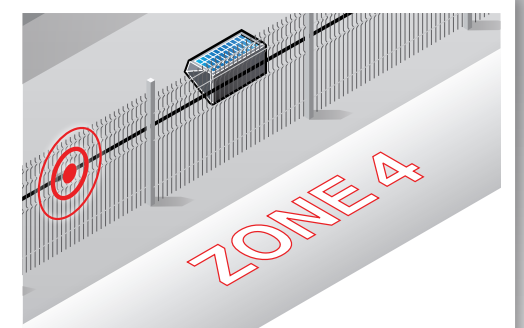
### Technical Specifications

<b>Power supply</b>	Solar panel and battery pack in each Control Unit (UG)		
	Control Unit (UG)	Detection zones	System
<b>Alarm information</b>	<ul style="list-style-type: none"> <li>• Tamper</li> <li>• Low battery</li> <li>• Input contact AUX.1</li> <li>• Input contact AUX.2</li> </ul>	1 intrusion per detection zone	Cutting of cable Cutting of the Bus
<b>Alarm outputs</b>	<ul style="list-style-type: none"> <li>• 136 relays</li> <li>• RS485 port, ModBus protocol</li> <li>• IP connection, ModBus TCP protocol</li> </ul>		
<b>Operating temperature</b>	From -40°F to 158°F (-40°C to 70°C)		
<b>Electromagnetic compatibility</b>	Compliant with European standards (label CE)		
<b>Maximum number of Control Units per MAXIBUS Universal G-FENCE</b>	16 x 4		
<b>Maximum length of protection per MAXIBUS Universal G-FENCE</b>	8 miles (13km)		

Distributor Stamp

For the purpose of continuously improving the quality and performance of its products, Protech reserves the right to change the above specifications without notice.

- Detects cutting, climbing and/or lifting of fence
- Precise location of intrusion to within 10 ft. (3 m)
- Up to 8 miles (13km) of protection per Maxibus
- **Functionality with Protech's MAXIBUS headend**



## Intrusion Localization

accelerometer  
technology



**Protection Technologies, Inc.**  
529 Vista Boulevard, A-3 • Sparks, Nevada 89434  
Telephone: (775) 856-7333 • Fax (775) 856-7658  
800-428-9662 • info@protechusa.com

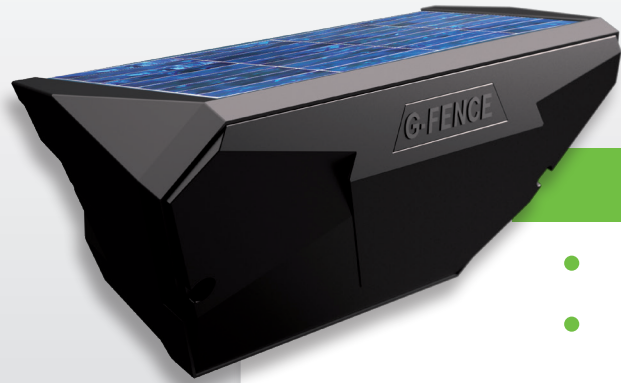
[protechusa.com](http://protechusa.com)

INC208-EN V3.0 09.18



G-FENCE detects attempts to cut, climb and/or lift the fence. Special algorithms eliminate disturbances caused by the environment such as wind or rain, and vibrations caused by passing vehicles.

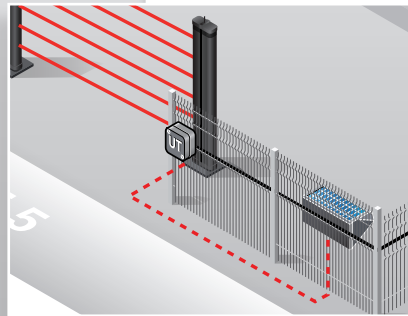
Control units are resistant to extreme environmental conditions (like heat, cold, humidity)



## Solar Powered

- **Integrated solar panel**
- **Advanced intrusion detection algorithms that minimize nuisance alarms**
- **Up to 656 ft. (200m) of protection coverage per Control Unit (UG)**
- **Two (2) auxiliary inputs per Control Unit for external alarms**

Control Unit (UG)

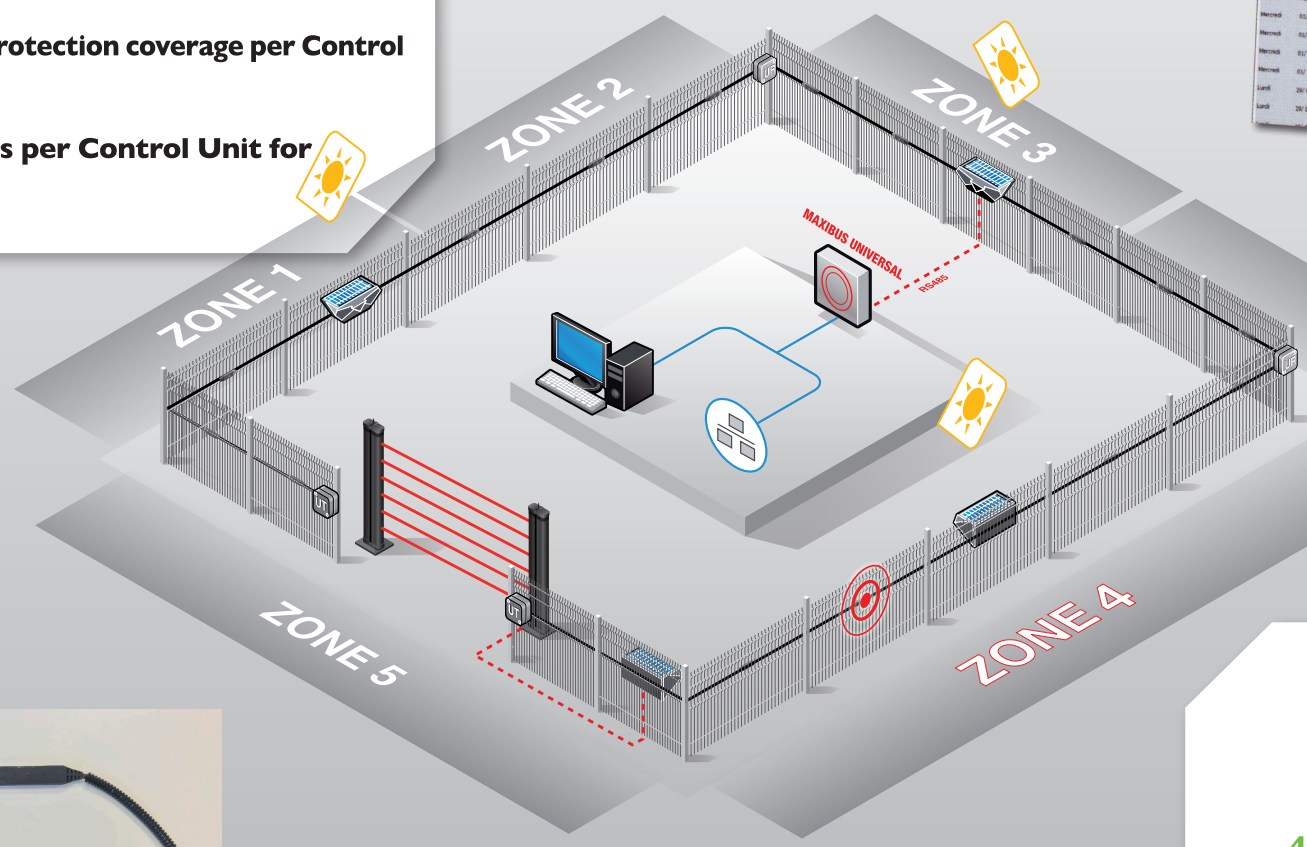


## Integrated Mapping

Graphic software for configuration and maintenance



- **Simple and user-friendly set-up of detection zones (up to 4 communication ports x 128 zones)**
- **Integrated event log (last 1000 events)**
- **Visual and precise location of intrusions to 10 ft. (3m)**



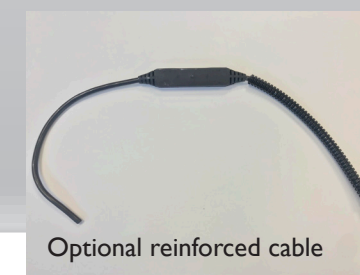
## Maxibus Universal: IP Technology

The **MAXIBUS Universal** is equipped with an **Ethernet connection**. A secure Linux operating system makes the interface faster and more user-friendly. Each system can be configured locally or remotely through the web server.

- **4 communication ports: up to 8 miles (13km) from one Maxibus Universal (4x2 miles (3200m))**
- **Redundancy of all alarm information in closed loop configuration**
- **Compatible with Milestone, Genetic, ONSSI, and other leading Video Management Systems**



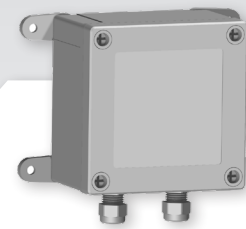
Accelerometer



Optional reinforced cable

- **Digital accelerometer sensors provide a wide range of sensitivity settings**
- **Each sensor is equipped with its own signal processing algorithm that distributes intelligence through the entire cable.**
- **Robust cable is resistant to bending and sustained pulling**
- **Optional reinforced cable and sensors for harsh environments - concertina/barbed wired, challenging vegetation, etc.**

## Distributed Intelligence



Link/Termination Unit (UR/UT)

- **Integrated LED on each sensor: simplifies set-up and maintenance by indicating and identifying location of errors due to damaged cable, wiring issues, etc.**
- **Precise location of cable cut to within 10 ft. (3 m)**

## Easy Installation and Maintenance