

## Diva 250 W LED+ Dimmer

Dimmer for dimmable LED, CFL, halogen, and incandescent bulbs.

### Features

- Large paddle switch with a captive linear-slide dimmer for a standard designer wallplate opening.
- LED+ includes the most advanced technology for superior dimming of LED, CFL, halogen, and incandescent bulbs.
- UL® Listed to control:
  - Dimmable LEDs
  - Dimmable compact fluorescent lamps (CFL) with integrated ballast
  - Lutron LTEA Hi-lume 1% forward-phase LED driver
  - Halogen
  - Incandescent
- Low-end adjustment to accommodate a wide range of bulbs.
- 100% factory tested.
- NEMA SSL-7A Type 2 Compliant.
- Formerly C•L.
- Coordinating Claro and Stainless Steel wallplates available separately.

### Application Requirements

- **When dimming LEDs or CFLs, only bulbs marked or rated as DIMMABLE may be used.**
- For a list of compatible DIMMABLE LEDs please visit [www.lutron.com/LEDfinder](http://www.lutron.com/LEDfinder)
- Some DIMMABLE LEDs and CFLs require a minimum number of bulbs for proper operation. For details and a list of bulbs, please visit [www.lutron.com/LEDfinder](http://www.lutron.com/LEDfinder)

### Model Numbers

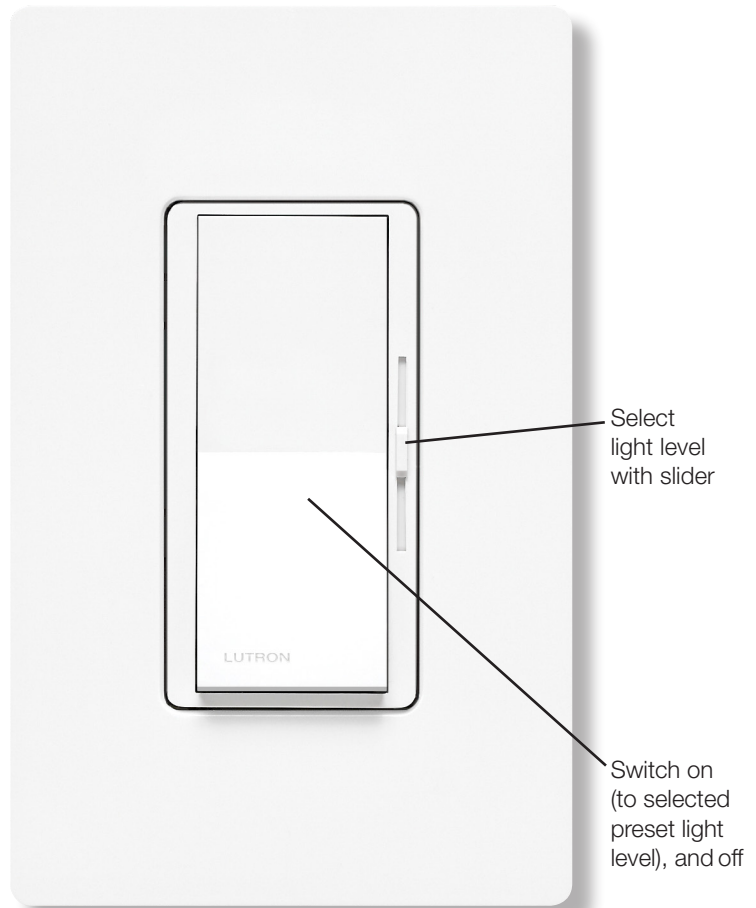
- DVCL-253P-XX<sup>1,2</sup> Gloss Finish, Single-pole/3-way<sup>3</sup>
- DVCL-253PH-XX-C<sup>4</sup> Gloss Finish, Single-pole/3-way<sup>3</sup>
- DVSCCL-253P-XX<sup>1</sup> Satin Finish, Single-pole/3-way<sup>3</sup>

<sup>1</sup> “XX” in the model number represents color/finish code; see **Colors and Finishes** section.

<sup>2</sup> For clamshell packaging, add “H” after “253P”. Clamshell packaged product available in IV, LA, and WH.

<sup>3</sup> For 3-way and 4-way switching, use Claro switches or other mechanical switches.

<sup>4</sup> Clamshell packaged product for Canada. Available in WH only.



## LUTRON SPECIFICATION SUBMITTAL

Page

<b>Job Name:</b>	<b>Model Numbers:</b>
<b>Job Number:</b>	

## Specifications

### Regulatory Approvals

- UL Listed to US and Canadian safety requirements  
UL1472/CSA C22.2 184.1
- NEMA SSL-7A Type 2

### Power and Ratings

- 120 V~ 60 Hz
- 250 W dimmable LED/CFL  
*or*
- 600 W incandescent/halogen  
*or*
- Mixed bulb type per **Multigang and Mixed Bulb Type Ratings** table  
*or*
- 350 W Lutron LTEA Hi-lume 1% forward-phase LED driver (maximum 8 drivers)

### Environment

- For indoor use only.
- Ambient operating temperature:  
32 °F to 104 °F (0 °C to 40 °C), 0% - 90% humidity

### Performance

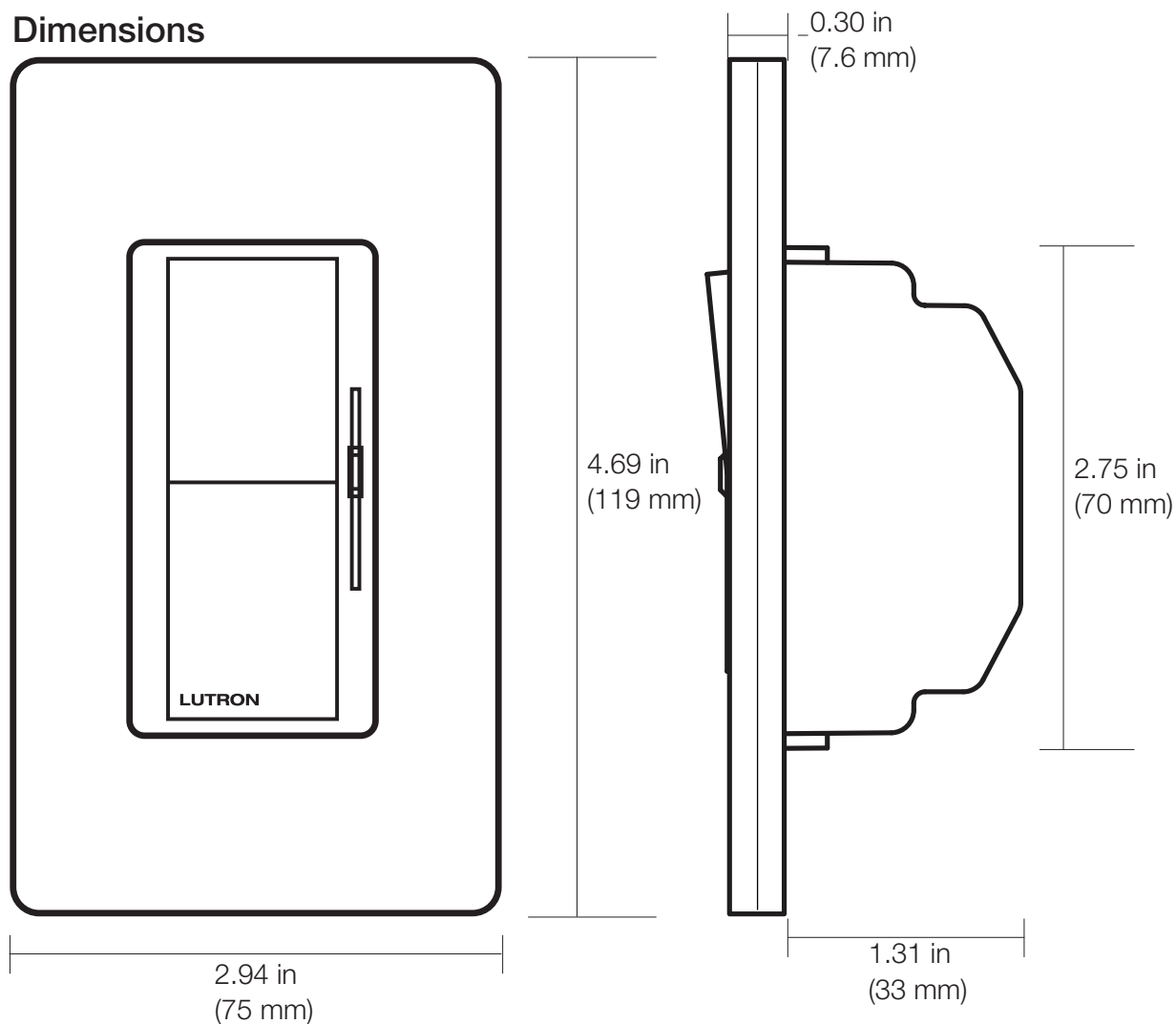
- Power failure memory: should power be interrupted, the control will return to its previously set level prior to the interruption when power is restored.
- Captive linear slider
- Tested to withstand electrostatic discharge without damage or memory loss, in accordance with IEC 61000-4-2.
- Precise color matching
- Mechanical air-gap switch to disconnect load power

### Warranty

- 1 Year Limited Warranty  
For additional Warranty information, please visit [www.lutron.com/TechnicalDocumentLibrary/369-119\\_Wallbox\\_Warranty.pdf](http://www.lutron.com/TechnicalDocumentLibrary/369-119_Wallbox_Warranty.pdf)

<b>Job Name:</b>  <b>Job Number:</b>	<b>Model Numbers:</b>
--	-----------------------

### Dimensions



**Note:** Requires a U.S. wallbox 2½ in (64 mm) deep minimum.

Job Name:	Model Numbers:
Job Number:	

## Colors and Finishes

### Gloss Finishes

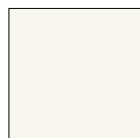
### Satin Finishes



White  
WH



Ivory  
IV



Brilliant White  
BW



Glacier White  
GL



Snow  
SW



Architectural White  
RW



Almond  
AL



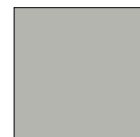
Light Almond  
LA



Lunar Gray  
LG



Mist  
MI



Pebble  
PB



Cobblestone  
CS



Gray  
GR



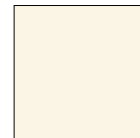
Brown  
BR



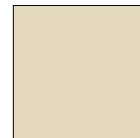
Slate  
SL



Midnight  
MN



Biscuit  
BI



Sand  
SD



Black  
BL



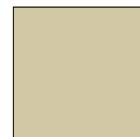
Taupe  
TP



Pumice  
PM



Clay  
CY



Sage  
SA

- Due to printing limitations, colors and finishes shown cannot be guaranteed to perfectly match actual product colors.
- Color chip keychains are available for more precise color matching:  
Gloss Finishes: DG-CK-1  
Satin Finishes: SF-CK-1
- For coordinating wallplates and accessories, visit [lutron.com/claro](http://lutron.com/claro)



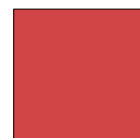
Espresso  
EP



Truffle  
TF



Deep Sea  
DE



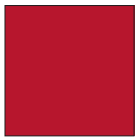
Signal Red  
SR

Job Name:	Model Numbers:
Job Number:	

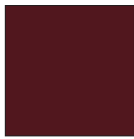


### Colors and Finishes *(continued)*

#### Satin Colors (while supplies last)



Hot  
HT



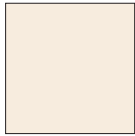
Merlot  
MR



Plum  
PL



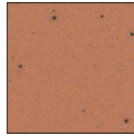
Palladium  
PD



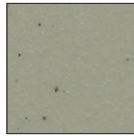
Eggshell  
ES



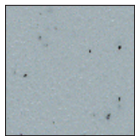
Sienna  
SI



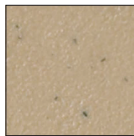
Terracotta  
TC



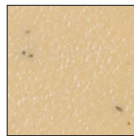
Greenbriar  
GB



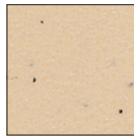
Bluestone  
BG



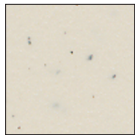
Mocha Stone  
MS



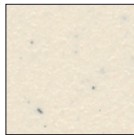
Goldstone  
GS



Desert Stone  
DS



Stone  
ST



Limestone  
LS

- Due to printing limitations, colors and finishes shown cannot be guaranteed to perfectly match actual product colors.
- Color chip keychains are available for more precise color matching:  
Satin Colors: SC-CK-1 (while supplies last)

<b>Job Name:</b>	<b>Model Numbers:</b>
<b>Job Number:</b>	

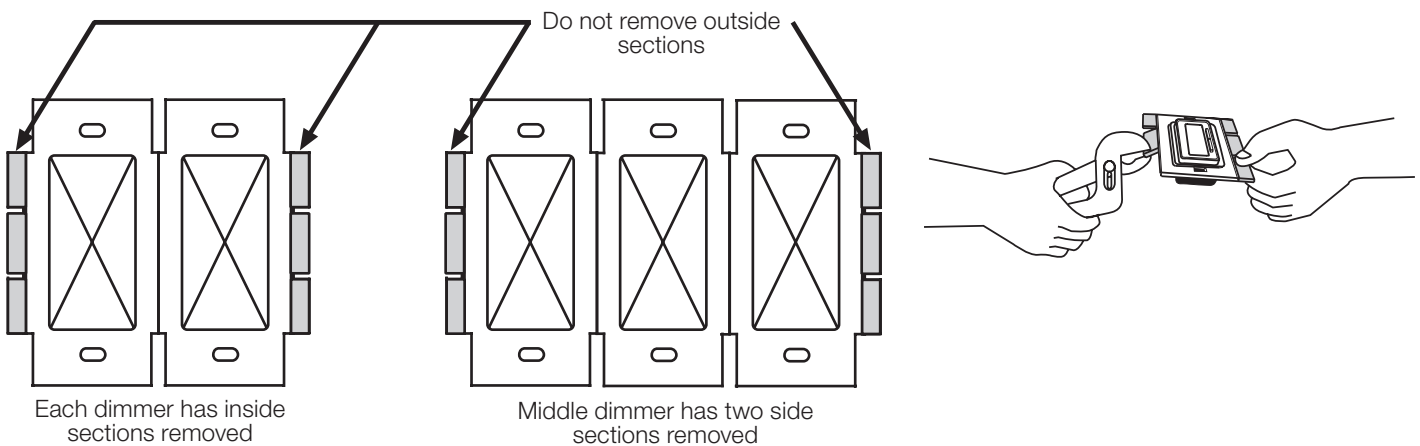
## Multigang and Mixed-Bulb-Type Ratings

When installing more than one dimmer in the same wallbox, it may be necessary to remove some side sections prior to wiring (**see diagram**). Removal of dimmer side sections may reduce maximum wattage, as shown in the chart below.

Mixing bulb types (**using a combination of LED/CFL, and incandescent/halogen bulbs**) will also affect the maximum ratings, as shown in the chart below.

**Note:** Lutron LTEA Hi-lume 1% forward-phase LED driver loads cannot be mixed with other loads.

\*EXAMPLE: If one set of side sections is removed and you have eight 9 W LED bulbs installed (Total LED Wattage = 72 W), you may add up to 300 W of incandescent or halogen lighting.

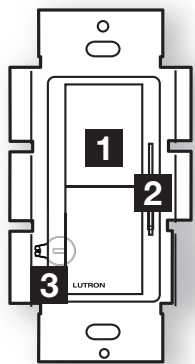


Total LED/CFL Wattage Installed (Wattage per bulb x # of bulbs)		Maximum Allowable Incandescent/Halogen Wattage		
		Maximum Allowable Incandescent/Halogen Wattage		
		A No sides removed	B 1 side removed	C 2 sides removed
0 W	+	600 W	500 W	400 W
1 W – 40 W	+	500 W	400 W	300 W
41 W – 80 W	+	400 W	300 W	200 W
81 W – 120 W	+	300 W	200 W	100 W
121 W – 160 W	+	200 W	100 W	50 W
161 W – 200 W	+	100 W	50 W	0 W
201 W – 250 W	+	0 W	0 W	0 W

**Note:** There is no wattage reduction when controlling only LED or CFL

Job Name:	Model Numbers:
Job Number:	

### Operation (View with wallplate removed)



**1** Switch  
Turns lights ON and OFF.

**2** Slider  
Controls light level.

+ ↑ Up  
Increases light level

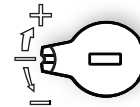
- ↓ Down  
Decreases light level

**IMPORTANT:** Set slider to bottom before adjusting dimming range.

### Lever-type Adjustment Dial

**3** Adjustment lever  
Sets low end dimming limit.

Up (clockwise)  
Increases brightness

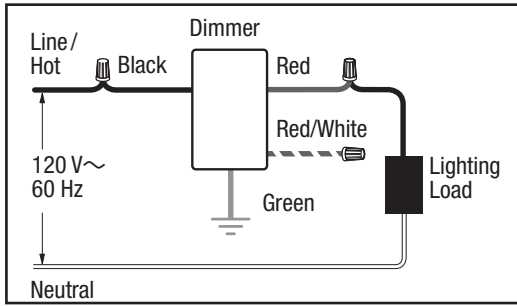


Down (counter-clockwise)  
Decreases brightness

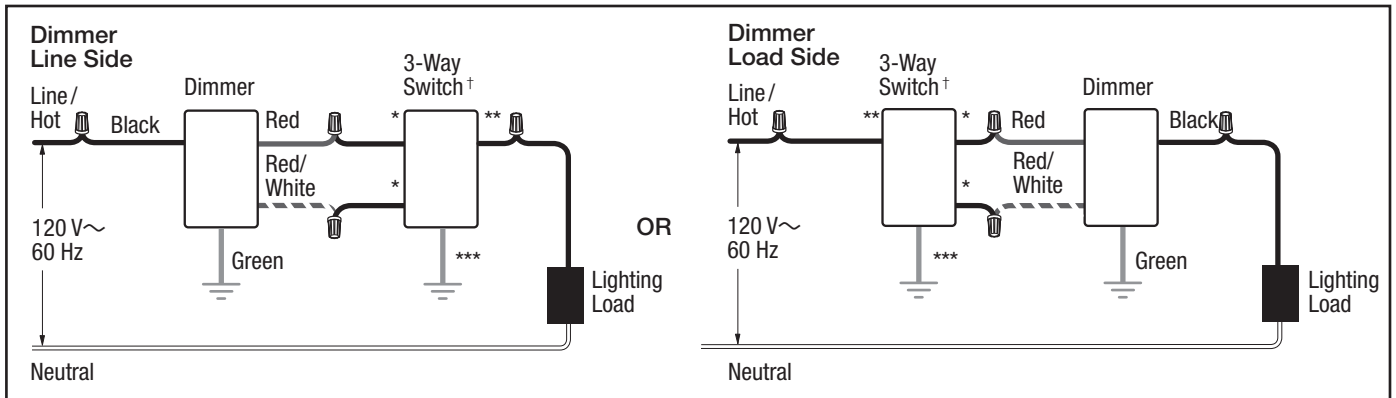
Job Name:	Model Numbers:
Job Number:	

## Wiring Diagrams

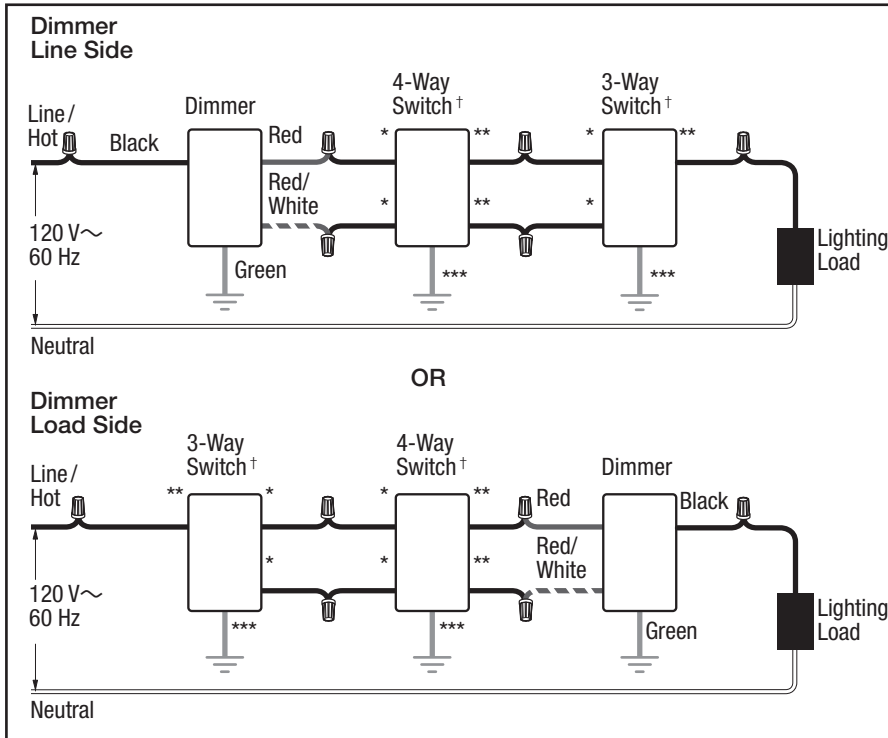
### Single-Pole Wiring



### 3-Way Wiring



### 4-Way Wiring



- \* Brass/Gold screw terminal
- \*\* Copper/Black screw terminal
- \*\*\* Green screw terminal
- † Please refer to the switch's instruction sheet for proper wiring.

**Note for 4-Way Wiring:**  
Dimmer must be installed Line Side or Load Side. It cannot be installed in the 4-way location.

The Lutron logo, Lutron, Diva, C•L, Hi-lume, LED+, Satin Colors and Claro are trademarks or registered trademarks of Lutron Electronics Co., Inc. in the US and/or other countries.

All other product names, logos, and brands are property of their respective owners.

Job Name:	Model Numbers:
Job Number:	