

Ordering

Model No.	Mechanical
C4 4 output, Fused	Size: 4" x 2.5" x 1.5"
C4P 4 output, Class 2 Power Limited	Weight: .50 lb.
C8 8 output, Fused	Size: 6" x 4 x 1.5"
C8P 8 output, Class 2 Power Limited	Weight: .75 lb.

Provided with cables and mounting hardware

Agency Listings

Product listed for use in LifeSafety Power equipment

USA

UL 294
UL 603
UL 1076
FCC Part 15, Subpart B
CSFM Approved

CANADA

ULC S318
ULC S319
CSA C22.2 #107.1
CSA 22.2 #60950



Product Overview

The FlexPower C4, C8 lock controller modules add either 4 or 8 lock control outputs to a FlexPower power supply and are typically supplied as part of a system or purchased as an expansion piece to an existing system.

Each module provides either 4 or 8 access control inputs capable of voltage or dry contact activation.

Each module provides either 4 or 8 lock outputs, each one programmable for fail-safe, fail-secure, dry contact, and fire alarm over ride for egress lock control.

In dual voltage systems, each lock output is also programmable to either of the two voltages available when used in a FlexPower dual voltage power system.

Lock modules incorporate OutSmart™ technology - color changing output LEDs that visually indicate voltage level (Green for 12V, Blue for 24V).

Each output is supervised for voltage and/or blown fuse with the fault reported to the host power supply.

Specifications

Parameter	Rating
Lock Outputs	4 / 8
Access Control Inputs	4 / 8
Input Voltage	12 and/or 24 VDC
Input Current	20 Amps max
Output Voltage (Jumper Select)	12/24 VDC
Output Current C4/C8	Fused at 3A per output
Output Current C4P/C8P	Class II at 2.5A per output
Fire Alarm Interface	Per Output
Supports follow on modules	Yes

Features and Functions

Flexibility

- Multiple outputs for direct lock control and additional accessory power distribution modules
- Color coded by function configuration jumpers for ease of programming
- Configurable fail-safe, fail-secure, and dry contact modes of operation
- Fire Alarm Interface (FAI) when used with an FPO power supply
- Fault detection and reporting to host power supply
- FlexConnect® Dual Buss Architecture
- OutSmart™ Color changing output LEDs indicate 12 or 24VDC setting

Output protection

- C4/C8 ATM style fuse: 3A/per output
- C4P/C8P Solid state circuit breaker: 2.5A/per output

Visual Indicators

- Output status per output (locked/unlocked)
- DC voltage per output (green LED for 12VDC | blue LED for 24VDC)
- Fault (yellow LED)

Mechanical

- Multiple modules can be daisy chained to add additional outputs
- Snap-in style mounting standoffs with fast-on connect cables for easy field installation

Lifetime warranty

- Fiberglass PCB and high efficiency circuit provides less heat generation leading to a longer service life and lower MTBF

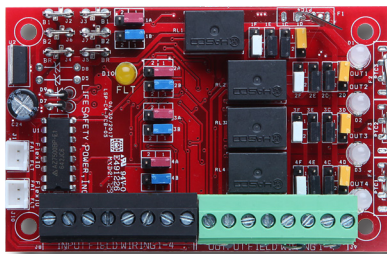
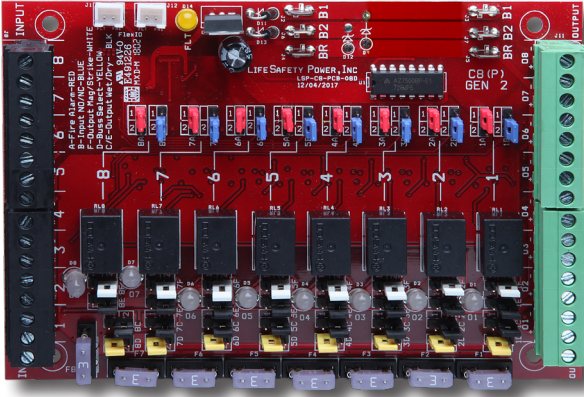


Relay Module Typical Jumper Programming

C8 / C4 Jumper Guide and Common Maglock / Strike Jumper Settings													
Maglock Output	A	B	C	D	E	F	Strike Output	A	B	C	D	E	F
NC Contact Input - with FAI	1	1	2	*	2	2	NC Contact Input - with FAI	1	1	2	*	2	1
NC Contact Input - without FAI	2	1	2	*	2	2	NC Contact Input - without FAI	2	1	2	*	2	1
NO Contact Input - with FAI	1	2	2	*	2	2	NO Contact Input - with FAI	1	2	2	*	2	1
NO Contact Input - without FAI	2	2	2	*	2	2	NO Contact Input - without FAI	2	2	2	*	2	1

*Set Jumper D according to which input voltage source (B1 or B2) should be directed to the output

COLOR	ACTION	REF	POSITION 1	POSITION 2	DESCRIPTION
RED	FAI	A	FAI ENABLED	FAI DISABLED	Jumper enables or disables FAI. Blue Jumper must be set correctly for FAI to work
BLUE	INPUT TYPE	B	NC INPUT (Fail Secure)	NO INPUT (Fail Safe)	Jumper selects fail-safe or fail-secure input. Adjust jumper so LED is FLASHING when input is calling for door to UNLOCK.
BLACK	WET/DRY OUTPUT	C, E	RELAY CONTACT OUTPUT	VOLTAGE OUTPUT	Jumpers select if output is relay contact or voltage output. Set BOTH jumpers to same position for proper operation.
YELLOW	VOLTAGE SELECT	D	B1 BUSS VOLTAGE	B2 BUSS VOLTAGE	Jumper selects power supply input from Buss 1 or Buss 2. If only a single power supply is used, set jumper to Position 1.
WHITE	OUTPUT TYPE	F	STRIKE (Fail Secure)	MAGLOCK (Fail Safe)	Jumper selects fail-safe or fail-secure output. Adjust jumper so door is UNLOCKED when zone output LED is flashing.



LifeSafetyPower.com

(888) 577-2898
info@lifesafetypower.com

Specifications subject to change without notice.

© 2024 LifeSafety Power. All rights reserved. LifeSafety Power and FlexPower are registered trademarks of LifeSafety Power. All other trademarks and copyrights are the property of their respective owners.

P01-002A 01/24

LifeSafety Power
10027 S. 51st Street, Suite 102
Phoenix, AZ 85044 USA