

M220 Series

Multi-Output Power Supply/Chargers

Altronix M220 series access control power supplychargers are specifically designed for use with access control systems and accessories. These units convert a 220VAC (working range 198VAC - 256VAC), 50/60Hz input into five (5) individually protected 12VDC or 24VDC outputs (see specifications). Each output will route power to a variety of access control hardware devices including Mag Locks, Electric Strikes, Magnetic Door Holders, etc. These outputs will operate in both Fail-Safe and Fail-Secure modes. Controlled trigger input is achieved through normally open [NO] or normally closed [NC] supervised input or the polarity reversal from an FACP (Fire Alarm Control Panel). A form "C" dry output relay enables HVAC Shutdown, Elevator Recall or may be used to trigger auxiliary devices.



AL600M220

Key Features

- Fire Alarm Panel or Access Control System trigger inputs. [NO] or [NC] supervised trigger input and polarity reversal trigger input (4mA draw from FACP)
- Five (5) individual power outputs (auto-resettable)
- Filtered and electronically regulated outputs
- Thermal and short circuit protection with auto reset
- Overload protection
- Output relay energizes when unit is triggered (form "C" contact rated 1A @ 28VDC)
- Supervision:
 - AC Fail
 - Battery Fail and Battery Presence
- Built-in charger for sealed lead acid or gel type batteries
- Instantaneous transfer to stand-by batteries
- Power and input trigger LEDs
- DC output LED indicator
- LEDs indicate condition of power outputs
- CE European Conformity
- Lifetime Warranty

M220 Series Power Supply Configuration Reference Chart

Altronix Model Number	220VAC 50/60Hz Input Current Draw (A)	Power Supply Input Fuse Rating	Power Supply Battery Fuse Rating	12VDC Total Current (A)	24VDC Total Current (A)	PTC Protected Outputs (auto-resettable)	Individual Output Current (A)	Enclosure Battery Capacity
AL300M220	1A	5A/250V	15A/32V	2.5	2.5	5	2.5	Two (2) 7AH
AL400M220	1.2A			4	3			Two (2) 7AH
AL600M220	1.5A		N/A	6	6			Two (2) 7AH
AL1012M220	2.2A		15A/32V	10	-			One (1) 12AH
AL1024M220	3A			-	10			Two (2) 12AH

Lifetime Warranty



M220 Series

Multi-Output Power Supply/Chargers

Specifications

Input

Voltage 220VAC (working range 198VAC - 256VAC),
50/60Hz

Input Fuse Varies, see Reference Chart

Outputs

Voltage 12VDC or 24VDC, see Reference Chart

Current Varies, see Reference Chart

Protection PTC 2.5A

Other Overvoltage protection
Filtered and regulated outputs

Battery Charging

Capacity 7AH/12VDC (AL300M220, AL400M220,
AL600M220)
12AH/12VDC (AL1012M220, AL1024M220)

Type Sealed lead acid or gel type

Failover Upon AC loss, instantaneous

Batteries are sold separately

Supervision

AC Fail Form "C" contacts

Battery Form "C" contacts

Indicators (LED)

Input 220VAC is present

DC Output Powered

Battery Discharged or not connected

Power and Input Individual LEDs indicate outputs are
triggered (relays energized)

Agency Listings

CE European Conformity

Physical and Environmental

Dimensions (H x W x D)

AL300M220, AL400M220, AL600M220:

Enclosure: 13.5" x 13" x 3.25" (342.9mm x 330.2mm x 82.6mm)
Shipping: 15" x 13.875" x 4.75" (381mm x 352.4mm x 120.6mm)

AL1012M220, AL1024M220:

Enclosure: 15.5" x 12" x 4.5" (393.7mm x 304.8mm x 114.3mm)
Shipping: 16.5" x 13.5" x 6" (419.1mm x 342.9mm x 152.5mm)

Weight (approx.)

Model	Product Weight	Shipping Weight
AL300M220	7.6 lb. (3.45 kg)	8.6 lb. (3.9 kg)
AL400M220	7.6 lb. (3.45 kg)	8.6 lb. (3.9 kg)
AL600M220	7.9 lb. (3.58 kg)	8.9 lb. (4.04 kg)
AL1012M220	8.95 lb. (4.06 kg)	10.25 lb. (4.65 kg)
AL1024M220	10.8 lb. (4.90 kg)	11.8 lb. (5.35 kg)

Temperature

Operating: 0°C to 49°C (32°F to 120°F)
Storage: - 20°C to 70°C (- 4°F to 158°F)

Relative Humidity 85% +/- 5%

BTU/Hr. (approx.)

Model	12VDC	24VDC
AL300M220	15	31
AL400M220	25	37
AL600M220	37	74
AL1012M220	61	N/A
AL1024M220	N/A	123

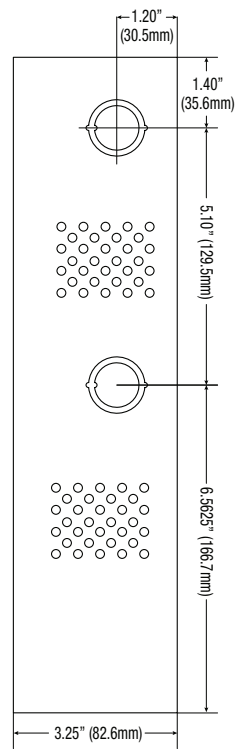
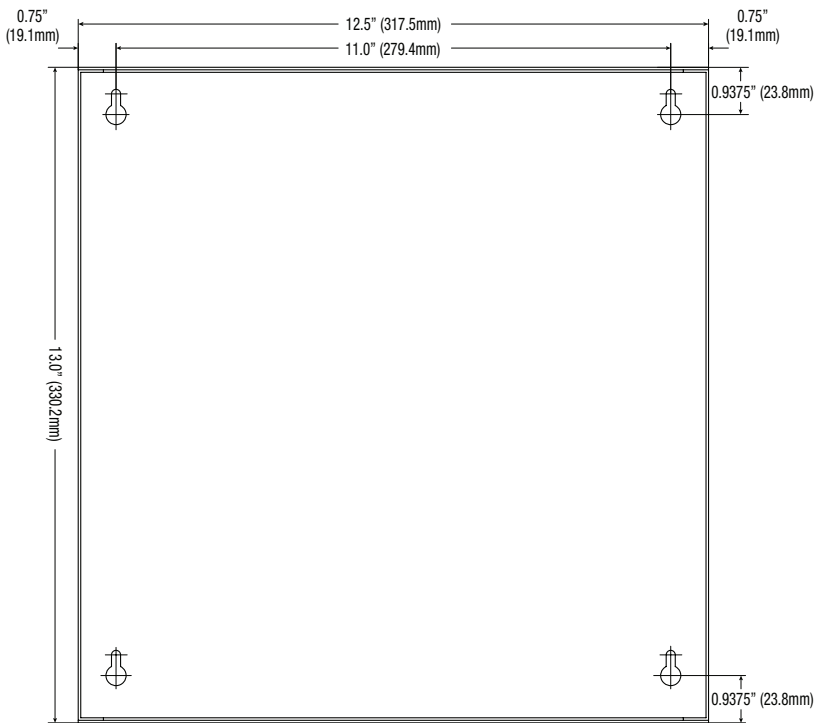
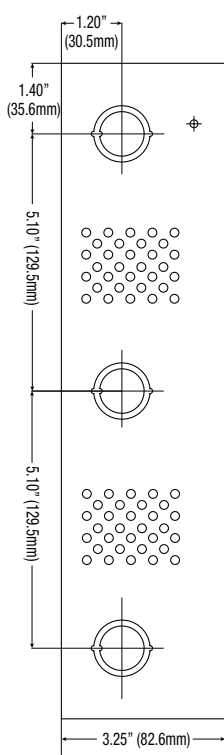
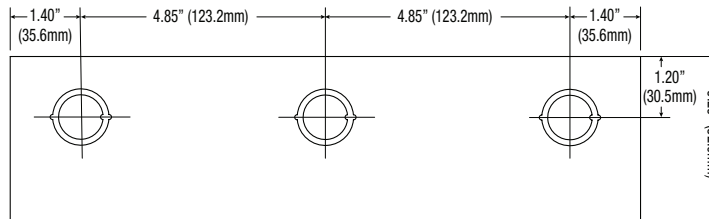
Lifetime Warranty

M220 Series

Multi-Output Power Supply/Chargers

Dimensions and Drawing

AL300M220, AL400M220, AL600M220 Dimensions (H x W x D approximate)
 13.5" x 13" x 3.25" (342.9mm x 330.2mm x 82.55mm)



Lifetime Warranty

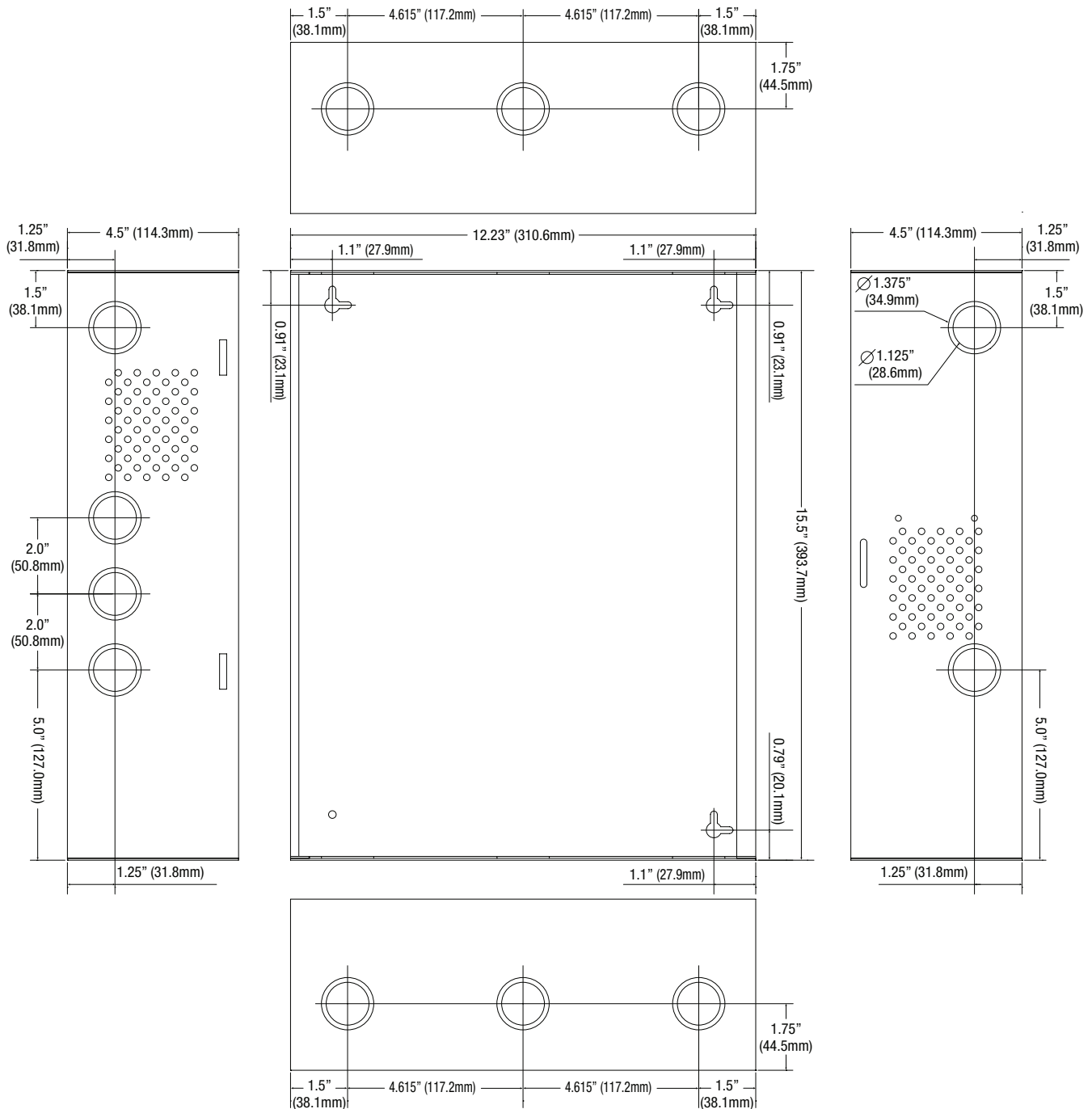
M220 Series

Multi-Output Power Supply/Chargers

Dimensions and Drawing

AL1012M220, AL1024M220 Dimensions (H x W x D approximate)

15.5" x 12" x 4.5" (393.7mm x 304.8mm x 114.3mm)



Lifetime Warranty

Altronix Corporation | 140 58th St | Brooklyn, NY 11220 USA

phone: +1 718.567.8181 | fax: +1 718.567.9056 | email: info@altronix.com | www.altronix.com