



## **C-530 Series 10G Managed Switch CLI Management Guide**

**Firmware Version  
V2.1.6**

# CLI Management Guide

---

## **SC53010**

12 Port SFP+ 10G Switch

## **SC53020**

48 Port 1440W PoE+ Switch with 4 SFP+ 10G Ports

## **SC53030**

48 Port 860W PoE+ Switch with 4 SFP+ 10G Ports

## **SC53040**

48 Port Switch with 4 SFP+ 10G Ports

## **SC53050**

24 Port PoE+ Switch with 4 SFP+ 10G Ports

## **SC53060**

24 Port Switch with 4 SFP+ 10G Ports and redundant power supplies

## **SC53070**

24 Port Switch with 4 SFP+ 10G Ports

## **SC53080**

8 Port PoE+ Switch with 2 SFP+ 10G Ports

## **SC53090**

24 Port 720W PoE+ Switch with 4 SFP+ 10G Ports

# How to Use This Guide

This guide includes detailed information on the switch software, including how to operate and use the management functions of the switch. To deploy this switch effectively and ensure trouble-free operation, you should first read the relevant sections in this guide so that you are familiar with all of its software features.

## Who Should Read this Guide?

This guide is for network administrators who are responsible for operating and maintaining network equipment. The guide assumes a basic working knowledge of LANs (Local Area Networks), the Internet Protocol (IP), and Simple Network Management Protocol (SNMP).

## How this Guide is Organized

This guide provides detailed information about the switch's key features. It also describes the switch's Command Line interface. For information on the Web GUI interface refer to *Web Management Guide*

The guide includes these sections:

**Chapter 1 “Preparing for Management”:** This section includes PC settings needed before accessing the Command Line Interface.

**Section III “CLI Management”:** Includes setting descriptions in the Command Line Interface.

## Related Documentation

This guide focuses on switch software configuration through the Command Line Interface.

For hardware installation please refer:

*Quick Start Guide*

## Revision History

This section summarizes the changes in each revision of this guide.

Revision	Date	Description
v1.0.0	2023/04/15	Initial Release

How to Use This Guide.....	3
Chapter 1: Preparing for Management.....	6
1.1. Preparation for Serial Console.....	7
1.2. Preparation for Web Interface .....	9
1.3. Preparation for Telnet/SSH Interface .....	11
Chapter 2: Web Management.....	<b>Error! Bookmark not defined.</b>
2.1. Web Management - Configuration .....	Error! Bookmark not defined.
2.1.1. Configuration - System.....	Error! Bookmark not defined.
2.1.2. Configuration - Ports .....	Error! Bookmark not defined.
2.1.3. Configuration - CFM.....	Error! Bookmark not defined.
2.1.4. ERPS .....	Error! Bookmark not defined.
2.1.5. Configuration – DHCPv4.....	Error! Bookmark not defined.
2.1.6. Configuration – DHCPv6.....	Error! Bookmark not defined.
2.1.7. Configuration - Security .....	Error! Bookmark not defined.
2.1.8. Configuration - Aggregation.....	Error! Bookmark not defined.
2.1.9. Configuration - Loop Protection .....	Error! Bookmark not defined.
2.1.10. Configuration - Spanning Tree .....	Error! Bookmark not defined.
2.1.11. Configuration - IPMC Profile.....	Error! Bookmark not defined.
2.1.12. Configuration - MVR.....	Error! Bookmark not defined.
2.1.13. Configuration - IPMC.....	Error! Bookmark not defined.
2.1.14. Configuration - LLDP .....	Error! Bookmark not defined.
2.1.15. Configuration - SyncE.....	Error! Bookmark not defined.
2.1.16. Configuration - MAC Table .....	Error! Bookmark not defined.
2.1.17. Configuration – VLANs .....	Error! Bookmark not defined.
2.1.18. Configuration – VLAN Translation .....	Error! Bookmark not defined.
2.1.19. Configuration - Private VLAN .....	Error! Bookmark not defined.
2.1.20. Configuration - VCL .....	Error! Bookmark not defined.
2.1.21. Configuration - Voice VLAN.....	Error! Bookmark not defined.
2.1.22. Configuration - QoS .....	Error! Bookmark not defined.
2.1.23. Configuration - Mirroring .....	Error! Bookmark not defined.
2.1.24. Configuration - UPnP .....	Error! Bookmark not defined.
2.1.25. Configuration – PTP.....	Error! Bookmark not defined.
2.1.26. Configuration - MRP.....	Error! Bookmark not defined.
2.1.27. Configuration – GVRP.....	Error! Bookmark not defined.
2.1.28. Configuration – sFlow.....	Error! Bookmark not defined.
2.1.29. Configuration – DDMI.....	Error! Bookmark not defined.
2.1.30. Configuration – UDLD.....	Error! Bookmark not defined.
2.1.31. Configuration – Virtual Stack .....	Error! Bookmark not defined.
2.1.32. Configuration – e-Spider .....	Error! Bookmark not defined.
2.2. Web Management - Monitor.....	Error! Bookmark not defined.
2.2.1. Monitor – System .....	Error! Bookmark not defined.
2.2.2. Monitor - Ports.....	Error! Bookmark not defined.
2.2.3. Monitor – CFM .....	Error! Bookmark not defined.
2.2.4. Monitor – ERPS .....	Error! Bookmark not defined.
2.2.5. Monitor – DHCPv4.....	Error! Bookmark not defined.
2.2.6. Monitor – DHCPv6.....	Error! Bookmark not defined.
2.2.7. Monitor – Security .....	Error! Bookmark not defined.
2.2.8. Monitor – Aggregation .....	Error! Bookmark not defined.
2.2.9. Monitor – Loop Protection.....	Error! Bookmark not defined.

<b>2.2.10. Monitor – Spanning Tree</b> .....	Error! Bookmark not defined.
<b>2.2.11. Monitor – MVR</b> .....	Error! Bookmark not defined.
<b>2.2.12. Monitor – IPMC</b> .....	Error! Bookmark not defined.
<b>2.2.13. Monitor – LLDP</b> .....	Error! Bookmark not defined.
<b>2.2.14. Monitor – PTP</b> .....	Error! Bookmark not defined.
<b>2.2.15. Monitor – MAC Table</b> .....	Error! Bookmark not defined.
<b>2.2.16. Monitor – VLANs</b> .....	Error! Bookmark not defined.
<b>2.2.17. Monitor – MVRP</b> .....	Error! Bookmark not defined.
<b>2.2.18. Monitor – sFlow</b> .....	Error! Bookmark not defined.
<b>2.2.19. Monitor – DDMI</b> .....	Error! Bookmark not defined.
<b>2.2.20. Monitor – UDLD</b> .....	Error! Bookmark not defined.
<b>2.3. Web Management - Diagnostics</b> .....	Error! Bookmark not defined.
<b>2.3.1. Diagnostics – Ping (IPv4)</b> .....	Error! Bookmark not defined.
<b>2.3.2. Diagnostics – Ping (IPv6)</b> .....	Error! Bookmark not defined.
<b>2.3.3. Diagnostics – Traceroute (IPv4)</b> .....	Error! Bookmark not defined.
<b>2.3.4. Diagnostics – Traceroute (IPv6)</b> .....	Error! Bookmark not defined.
<b>2.3.5. Diagnostics – VeriPHY</b> .....	Error! Bookmark not defined.
<b>2.4. Web Management - Maintenance</b> .....	Error! Bookmark not defined.
<b>2.4.1. Maintenance - Restart Device</b> .....	Error! Bookmark not defined.
<b>2.4.2. Maintenance - Factory Defaults</b> .....	Error! Bookmark not defined.
<b>2.4.3. Maintenance - Software</b> .....	Error! Bookmark not defined.
<b>2.4.4. Maintenance - Configuration</b> .....	Error! Bookmark not defined.

# Chapter 1:

## Preparing for Management

### **In Preparing for Management:**

This section will guide you how to manage this product via serial console, management web page, and Telnet/SSH interface.

The switch provides both *out-of-band* and *in-band* managements.

**Out-of-band Management:** You can configure the switch via RS232 console cable without having the switch or your PC connecting to a network. Out-of-band management provides a dedicated and secure way for switch management.

**In-Band Management:** In-band management allows you to manage your switch with a web browser (such as Microsoft IE, Mozilla Firefox, or Google Chrome) as long as your PC and the switch are connected to the same network.

- **Preparation for Serial Console**
- **Preparation for Web Interface**
- **Preparation for Telnet/SSH Interface**

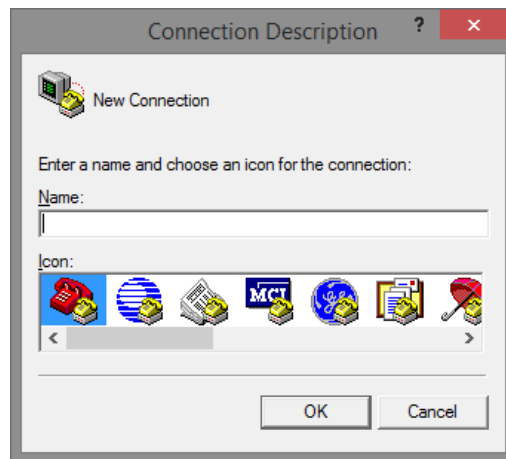
## 1.1. Preparation for Serial Console

Inside the product package, you can find an RS-232 console cable. Before managing your switch via out-of-band management, please attach this cable's RJ45 connector to your switch's console port and its RS-232 female connector to your PC's COM port.

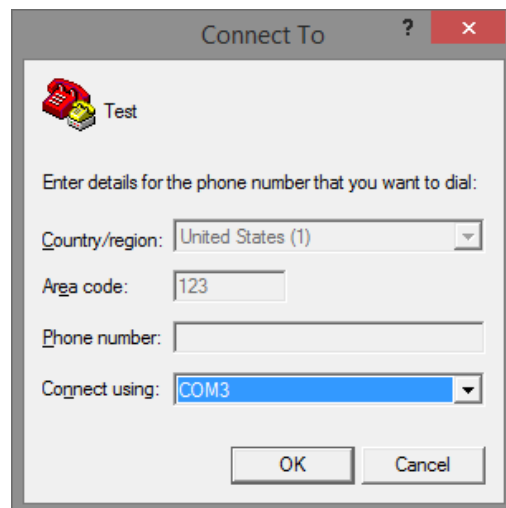
To access this switch's out-of-band management CLI (Command Line Interface), your PC must have terminal emulator software such as HyperTerminal or PuTTY installed. Some operating systems (such as Microsoft Windows XP) have HyperTerminal already installed. If your PC does not have any terminal emulator software installed, please download and install a terminal emulator software on your PC.

The following section will use HyperTerminal as an example.

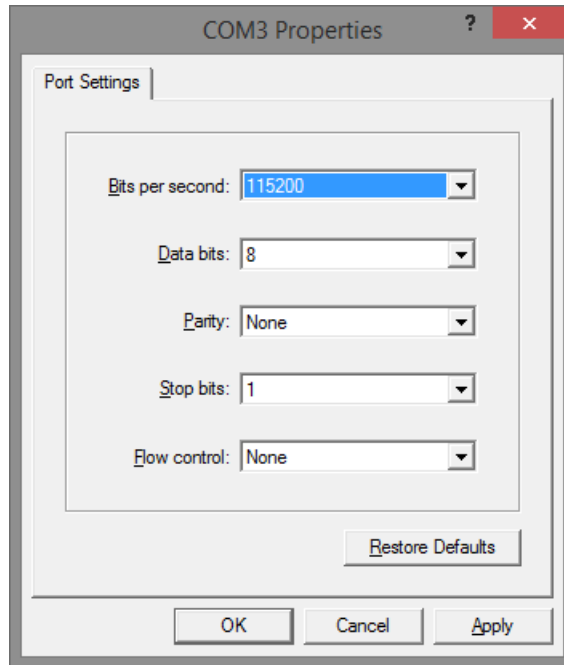
1. Run HyperTerminal on your PC.
2. Give a name to the new console connection.



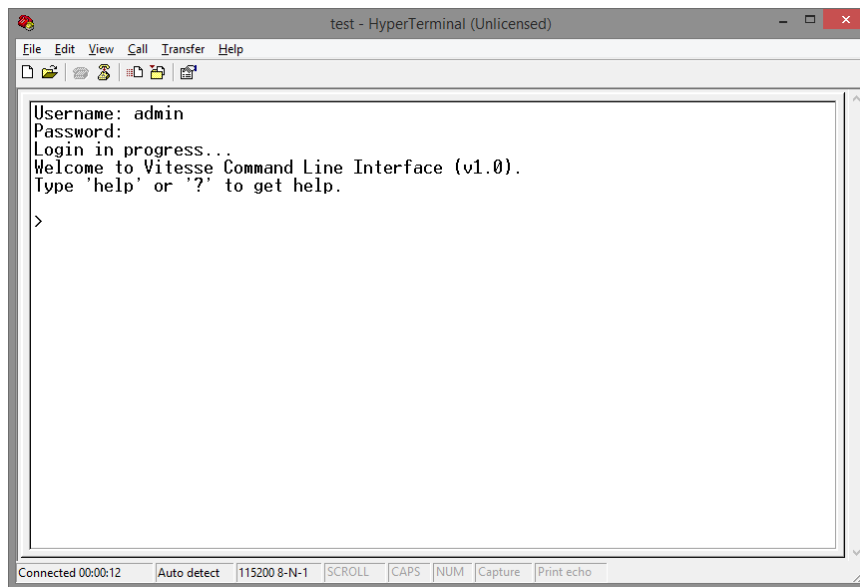
3. Choose the COM port that is connected to the switch.



4. Set the serial port settings as: **Baud Rate:** 115200, **Data Bit:** 8, **Parity:** None, **Stop Bit:** 1, **Row Control:** None.



5. The system will prompt you to login the out-of-band management CLI. The default username/password is **admin/admin**.



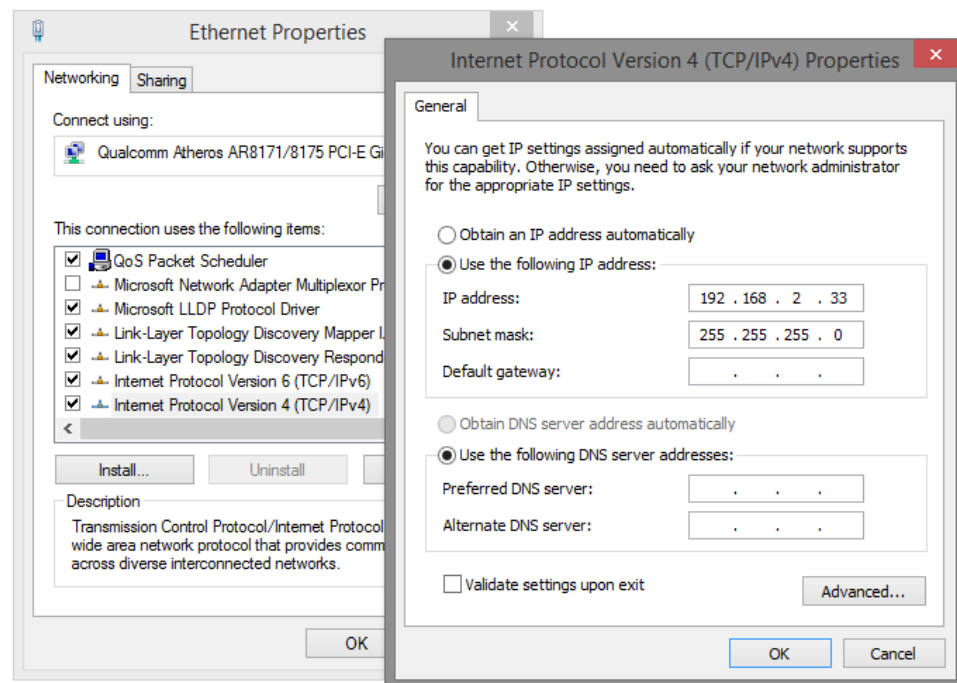


## 1.2. Preparation for Web Interface

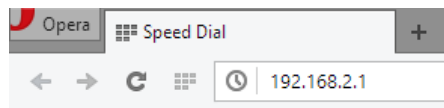
The management web page allows you to use a web browser (such as Microsoft IE, Google Chrome, or Mozilla Firefox) to configure and monitor the switch from anywhere on the network.

Before using the web interface to manage your switch, please verify that your switch and your PC are on the same network. Please follow the steps down below to configure your PC properly:

1. Verify that the network interface card (NIC) of your PC is operational and properly installed, and that your operating system supports TCP/IP protocol.
2. Connect your PC with the switch via an RJ45 cable.
3. The default IP address of the switch is **192.168.2.1**. The switch and your PC should locate within the same IP Subnet. Change your PC's IP address to 192.168.2.X, where X can be any number from 2 to 254. Please make sure that the IP address you've assigned to your PC cannot be the same with the switch.



4. Launch the web browser (IE, Firefox, or Chrome) on your PC.
5. Type **192.168.2.1** (or the IP address of the switch) in the web browser's URL field, and press Enter.



The web browser will prompt you to sign in. The default username/password for the configuration web page is **admin/admin**.

---

## Chapter 1: Preparing for Management Preparation for Web Interface

**Please sign in**

You need to sign in with "192.168.2.1:80"

Site message: PoE

Username:

Password:

### 1.3. Preparation for Telnet/SSH Interface

Both telnet and SSH (Secure Shell) are network protocols that provide a text-based command line interface (CLI) for in-band system management. However, only SSH provides a secure channel over an un-secured network, where all transmitted data are encrypted.

This switch support both telnet and SSH management CLI. In order to access the switch's CLI via telnet or SSH, both your PC and the switch must be in the same network. Before using the switch's telnet/SSH management CLI, please set your PC's network environment according to the previous chapter (**2.2. Preparation for Web Interface**).

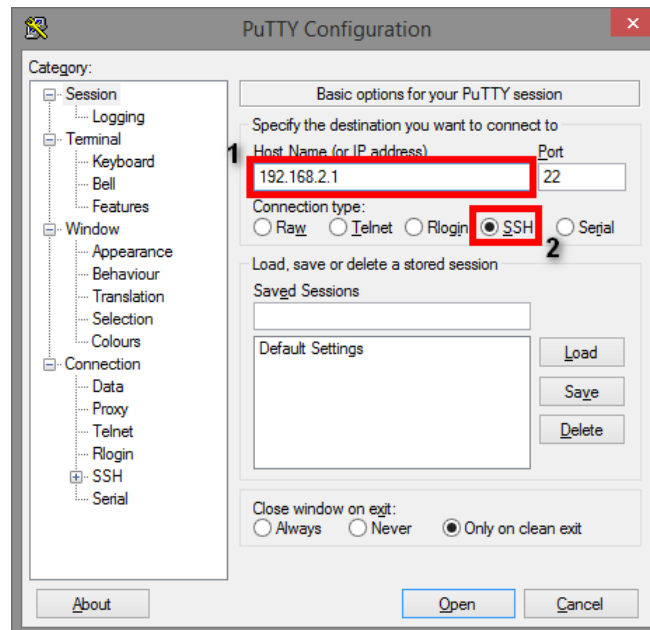
Telnet interface can be accessed via Microsoft "CMD" command. However, SSH interface can only be accessed via dedicated SSH terminal simulator. The following section will use *PuTTY* as an example to demonstrate how to connect to the switch's SSH CLI, since both telnet and SSH uses the same way (though using different terminal simulator software) to access in-band management CLI.

#### Access SSH via Putty:

A "PuTTY Configuration" window will pop up after you run PuTTY.

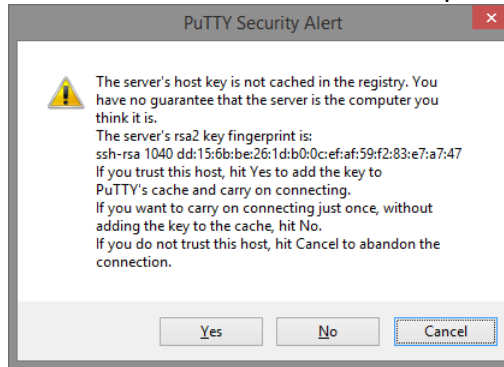
Input the IP address of the switch in the "**Host Name (or IP address)**" field. The default IP address of the switch is **192.168.2.1**.

Choose "SSH" on the "**Connection type**" section, then press "Enter".

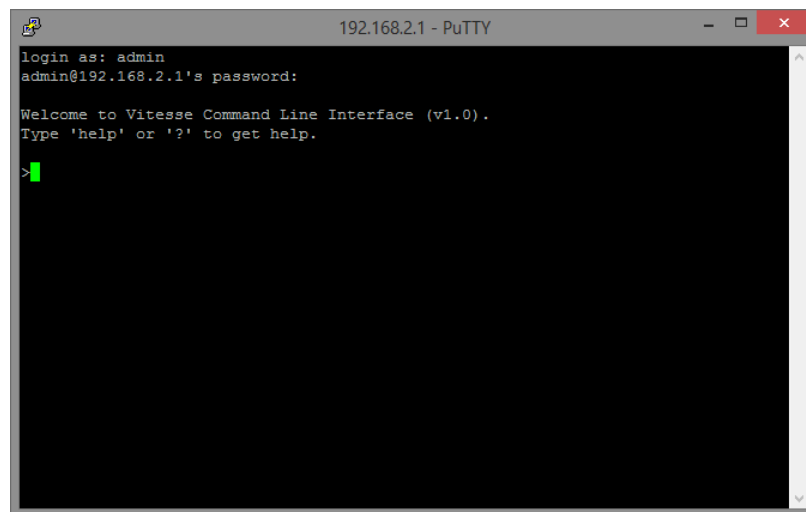


If you're connecting to the switch via SSH for the first time, a "**PuTTY Security Alert**" window will pop up. Please press "**Yes**" to continue. This window won't pop up if you're using telnet to connect to the in-band management CLI.

## Chapter 1: Preparing for Management Preparation for Telnet/SSH Interface



PuTTY will prompt you to login after the telnet/SSH connection is established. The default username/password is **admin/admin**.



---

**Chapter 1: Preparing for Management**  
Preparation for Telnet/SSH Interface