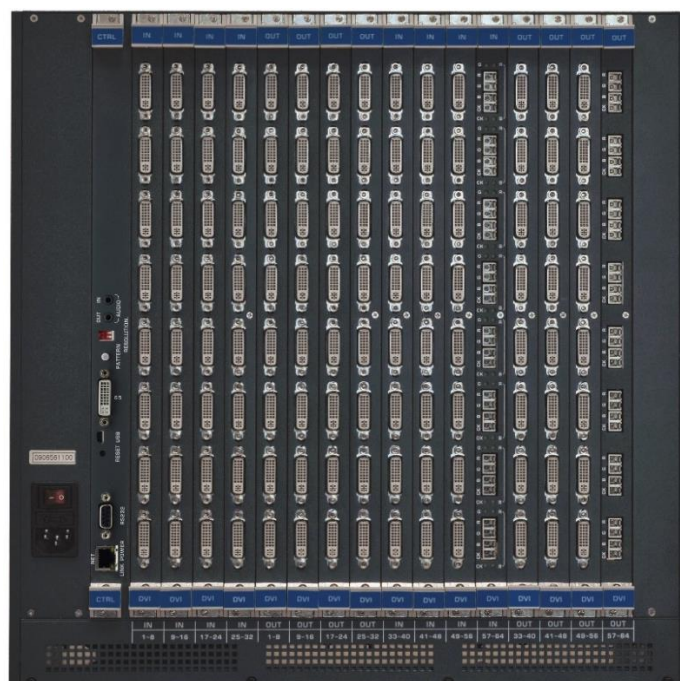


## USER MANUAL

### MODEL:

**VS-6464DN-EM**

**8x8 to 64x64 Modular Multi-Format  
Managed Digital Matrix Switcher**



# Contents

<b>Introduction</b>	<b>1</b>
Getting Started	2
Overview	4
<b>Mounting VS-6464DN-EM</b>	<b>10</b>
<b>Connecting the VS-6464DN-EM</b>	<b>11</b>
Port Numbering	12
Connecting to the VS-6464DN-EM via RS-232	14
Connecting to the VS-6464DN-EM via USB (VCOM)	14
Connecting to the VS-6464DN-EM via Ethernet	14
<b>Operating Your Video Matrix Switcher</b>	<b>17</b>
Startup Display	17
Using the Selector Buttons	18
Confirming Actions	18
Switching Actions	19
Locking the Front Panel Buttons	21
<b>Using the Configuration Menus</b>	<b>22</b>
Using the Setup Menu	22
Using the Config Menu	26
<b>Configuring the Number of Installed Input and Output Ports</b>	<b>32</b>
<b>Using the Input / Output Cards</b>	<b>33</b>
Defining the HDCP-IN8-F64 / HDCP-OUT8-F64	33
Defining the DGKat-IN8-F64 / DGKat-OUT8-F64	34
Defining the F670-IN8-F64 / F670-OUT8-F64	36
Defining the F610-IN8-F64 / F610-OUT8-F64	38
Defining the DVI-IN8-F64 / DVI-OUT8-F64	39
Defining the VGAA-IN8-F64 / VGAA-OUT8-F64	40
<b>Troubleshooting Video and Audio Problems</b>	<b>43</b>
Defining the Controller and Test Card	43
Setting the Resolution of the Generated Video	44
Setting the Pattern of the Generated Video	45
Installing the Test Module	45
Troubleshooting Video Problems	46
Troubleshooting Audio Problems	47
<b>Input / Output Card Hardware Installation Instructions</b>	<b>50</b>
<b>Installing a PS-1DN Power Supply</b>	<b>52</b>
<b>Upgrading VS-6464DN-EM and Input / Output Card Firmware</b>	<b>53</b>
Upgrading Firmware Using K-Upload	53
Upgrading Firmware Using Kramer Network	54
<b>Technical Specifications</b>	<b>55</b>
VS-6464DN-EM Chassis	55
Quick VS-6464DN-EM Card Comparison	55
<b>Default Settings</b>	<b>57</b>
Default Communication Parameters	57
Factory Default EDID	57
<b>Protocol 3000</b>	<b>62</b>
Understanding Protocol 3000 Commands	63
Protocol 3000 Syntax	64
Protocol 3000 Commands	64
Using the Packet Protocol	90

# Introduction

Welcome to Kramer Electronics! Since 1981, Kramer Electronics has been providing a world of unique, creative, and affordable solutions to the vast range of problems that confront the video, audio, presentation, and broadcasting professional on a daily basis. In recent years, we have redesigned and upgraded most of our line, making the best even better!

Congratulations on purchasing your Kramer **VS-6464DN-EM 8x8 to 64x64 Modular Multi-Format Managed Digital Matrix Switcher**. This product, which incorporates HDMI™ technology, is ideal for:

- Professional display systems requiring video signal routing.
- Broadcast, presentation and production facilities, as well as monitoring in large duplication systems.
- Rental/staging applications.



Throughout this user manual the chassis configuration is shown with 64 DVI inputs and 64 DVI outputs as a representation only.

The following cards are available and may be mixed in the same chassis:

- HDCP-IN8-F64 / HDCP-OUT8-F64  
(see [Defining the HDCP-IN8-F64 / HDCP-OUT8-F64](#) on page [33](#))
- DGKat-IN8-F64 / DGKat-OUT8-F64  
(see [Defining the DGKat-IN8-F64 / DGKat-OUT8-F64](#) on page [34](#))
- F670-IN8-F64 / F670-OUT8-F64  
(see [Defining the F670-IN8-F64 / F670-OUT8-F64](#) on page [36](#))
- F610-IN8-F64 / F610-OUT8-F64  
(see [Defining the F610-IN8-F64 / F610-OUT8-F64](#) on page [38](#))
- DVI-IN8-F64 / DVI-OUT8-F64  
(see [Defining the DVI-IN8-F64 / DVI-OUT8-F64](#) on page [39](#))
- VGAA-IN8-F64 / VGAA-OUT8-F64  
(see [Defining the VGAA-IN8-F64 / VGAA-OUT8-F64](#) on page [40](#))



The F670-IN8/OUT8-F64 cards are fully compatible with the Kramer **670T/670R** and **671T/671R** HDMI/DVI transmitters and receivers for non-HDCP content.

The terms HDMI, HDMI High-Definition Multimedia Interface, and the HDMI Logo are trademarks or registered trademarks of HDMI Licensing Administrator, Inc.

---

## Getting Started

We recommend that you:

- Unpack the equipment carefully and save the original box and packaging materials for possible future shipment.
- Review the contents of this user manual.



Go to [www.kramerav.com/downloads/VS-6464DN-EM](http://www.kramerav.com/downloads/VS-6464DN-EM) to check for up-to-date user manuals, application programs, and to check if firmware upgrades are available (where appropriate).

## Achieving the Best Performance

To achieve the best performance:

- Use only good quality connection cables (we recommend Kramer high-performance, high-resolution cables) to avoid interference, deterioration in signal quality due to poor matching, and elevated noise levels (often associated with low quality cables).
- Do not secure the cables in tight bundles or roll the slack into tight coils.
- Avoid interference from neighboring electrical appliances that may adversely influence signal quality.
- Position your **VS-6464DN-EM** away from moisture, excessive sunlight and dust.



This equipment is to be used only inside a building. It may only be connected to other equipment that is installed inside a building.

## Safety Instructions



### Warning: Class 1 laser product

- Invisible laser radiation present.
- Avoid long-term viewing of laser.
- Avoid the use of magnifying viewing aids or instruments (such as binoculars, telescopes, microscopes and magnifying lenses, but not spectacles or contact lenses).
- Avoid placing optical devices in the emitted beam that could cause the concentration of the laser radiation to be increased.



### Caution:

- This equipment is to be used only inside a building. It may only be connected to other equipment that is installed inside a building.
- For products with relay terminals and GPIO ports, please refer to the permitted rating for an external connection, located next to the terminal or in the User Manual.
- There are no operator serviceable parts inside the unit.



### Warning:

- Use only the power cord that is supplied with the unit.
- Disconnect the power and unplug the unit from the wall before installing.
- Do not open the unit. High voltages can cause electrical shock! Servicing by qualified personnel only.
- To ensure continuous risk protection, replace fuses only according to the rating specified on the product label which located on the bottom of the unit.

## Recycling Kramer Products

The Waste Electrical and Electronic Equipment (WEEE) Directive 2002/96/EC aims to reduce the amount of WEEE sent for disposal to landfill or incineration by requiring it to be collected and recycled. To comply with the WEEE Directive, Kramer Electronics has made arrangements with the European Advanced Recycling Network (EARN) and will cover any costs of treatment, recycling and recovery of waste Kramer Electronics branded equipment on arrival at the EARN facility. For details of Kramer's recycling arrangements in your particular country go to our recycling pages at [www.kramerav.com/support/recycling/](http://www.kramerav.com/support/recycling/).

## About Fast Switching

Older display devices require a longer time between the loss of one digital signal and the introduction of another, as well as a physical disconnection of the interconnecting cable in order to be able to detect and adjust to the new video attributes and parameters. Normal switching, therefore, introduced a 5V signal disconnection along with a delay in switching. Many newer display devices, however, are now capable of accepting "on-the-fly" switching.

Depending on the display device in use, the **VS-6464DN-EM** allows for fast switching (minor reset and the connection kept alive) and extra fast switching (no reset and the connection kept alive), see [Config Menu—Setting Output Port Parameters](#) on page 29. Using the fast and extra fast switching modes allows for fraction-of-a-second switching times when using high performance display devices or when using a scaler on the video output.

## About Power Connect™

The Power Connect™ feature here means that the **VS-6464DN-EM** can supply power to the TP transmitters and receivers (for example, the **TP-573** and **TP-574**) as long as the devices are within 90m (270ft) of each other. The Power Connect™ feature applies as long as the cable can carry power and the distance does not exceed 90m on standard CAT 5 cable. For longer distances, a heavier gauge cable should be used (a TP cable is still suitable for the video/audio transmission, but not for feeding the power at these distances).

---

## Overview

The Kramer **VS-6464DN-EM** is a high performance managed matrix switcher chassis for AV signals. The unit is modular and populated from 8 x 8 to 64 x 64 ports in increments of eight inputs and/or eight outputs. The unit supports various signals, depending on the type of cards installed, and includes two power supplies with an optional third for redundancy and a controller and testing module that can monitor and test any input or output in the matrix. It features a very high bandwidth of up to 3.4Gbps (for the chassis only, effective bandwidth of the system depends on the input / output cards, see [Using the Input / Output Cards](#) on page [33](#)) that ensures transparent performance even in the most critical applications. The cards re-clock and equalize the signals and the chassis can route any or all inputs to any or all outputs simultaneously.

The **VS-6464DN-EM** is highly configurable – you can add or remove inputs and outputs independently in groups of eight and mix different types of input/output cards in the same chassis. For example, you can configure a device as an 8 x 24 or a 64 x 8 matrix switcher to exactly suit your needs.

The **VS-6464DN-EM** features:

- Full 64 x 64 non-blocking matrix array to switch any of the 64 input digital signals to any or all of the 64 outputs (see [Connecting the VS-6464DN-EM](#) on page [11](#)).
- Easy access to 60 pre-set memory locations for quick access to user-defined setups.
- Fast switching on outputs to reduce or remove switching delay.
- Support for redundant, hot swappable power supplies.
- Simple firmware upgrade of compatible cards (see [Upgrading VS-6464DN-EM and Input / Output Card Firmware](#) on page [53](#)).
- Seamless integration with Kramer Network for switching, card status, port status, firmware upgrades (of compatible cards), and more.
- A 40 character by 2 line LCD that shows the operational status or the configuration menu.
- A lock function to prevent tampering with the front panel.
- A default EDID (Extended Display Identification Data) for each input.
- EDID Capture – Copies and stores the EDID from a display device.
- Non-volatile EDID storage.

- Kramer Core™ – Flexible infrastructure conversion. Copper, fiber or Twisted Pair, all can be used at the same time according to input/output module selection. The matrix receives signals from compatible Kramer transmitters, automatically converts between available infrastructure options and sends the signals to compatible Kramer receivers.
- Max. Data Rate – 10.2Gbps (3.4Gbps per graphic channel) when using compatible cards.
- HDTV Compatible.
- HDCP Compliant – With DVI (HDCP), F670, and DGKat modules.
- HDMI Support.
- DGKat™ Signal Integration – Kramer’s unique technology for converting TMDS as well as control and communication to signals that run over twisted pair cables. For optimum range and performance using, use recommended Kramer cables, available at [www.kramerav.com/product/VS-6464DN-EM](http://www.kramerav.com/product/VS-6464DN-EM)
- Kramer Equalization & re-Klocking™ Technology – Rebuilds the digital signal to travel longer distances.
- Optional Fast Switching Support – For fraction of a second switching.
- Modular & Easily Configurable Platform – Input or output module types can be mixed and added in increments of 8 from 8x8 up to 64x64.
- Versatile Selection of Modules – Including DVI, HDCP (HDMI over DVI connector), HDMI over Fiber, DVI over Fiber, VGA and DGKat (HDMI over twisted pair).
- Kramer Protocol 3000.
- Flexible Configuration – To disable HDCP support and convert between HDMI and DVI.

You can operate the **VS-6464DN-EM** via the front panel buttons or remotely via:

- RS-232 or USB (VCOM) serial commands transmitted by a touch screen system, PC or other serial controller.
- Ethernet over a LAN.
- Kramer Network enterprise management platform.



The **VS-6464DN-EM** is a sophisticated device but has nevertheless been designed to be simple to operate using an intuitive front panel keypad. For details of how to route inputs to outputs, see [Switching Actions](#) on page [19](#).

The **VS-6464DN-EM** is housed in a 19" rack-mountable enclosure.

# Defining the VS-6464DN-EM 8x8 to 64x64 Modular Multi-Format Managed Digital Matrix Switcher

This section defines the front and rear panels of the VS-6464DN-EM.

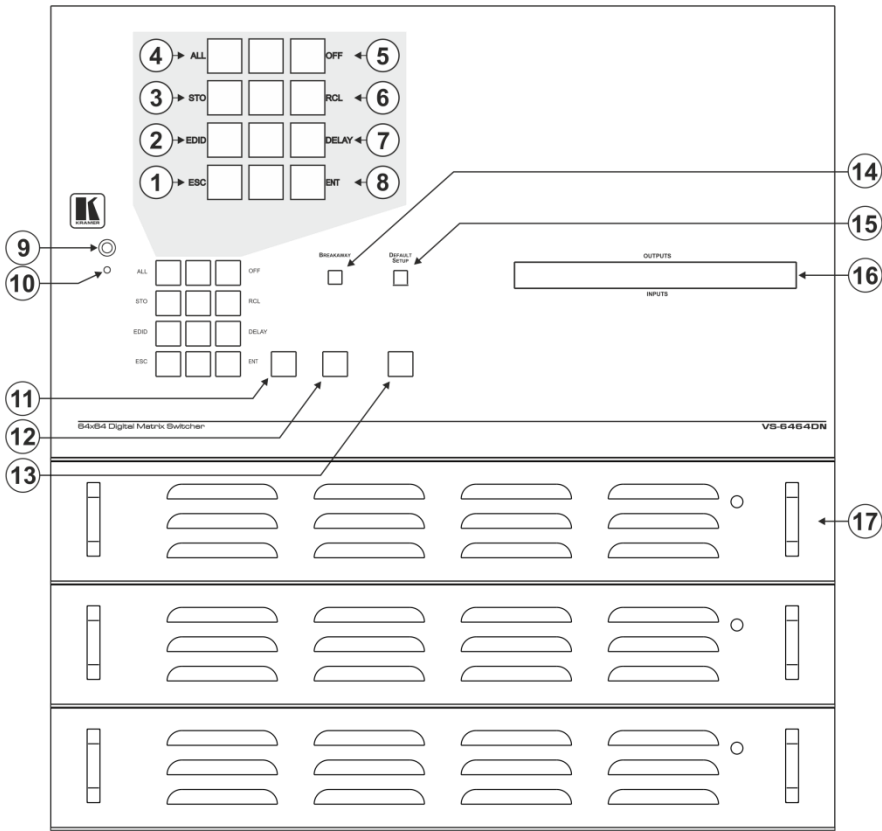


Figure 1: VS-6464DN-EM Front Panel



Buttons 11, 12 and 13 function as the TAKE, MENU and LOCK buttons respectively.

#	Feature	Function	
1	Double-function Selector Buttons Area	ESC	Press to exit the current operation.
2		EDID	Press to assign EDID channels.
3		STO	Press to store the current setup in a preset. After pressing the MENU button, this button lights and is enabled.
4		ALL	Press to connect an input to all outputs. After pressing the MENU button, this button lights and is enabled.
5		OFF	Press to turn off an output. After pressing the MENU button, this button lights and is enabled.
6		RCL	Press to recall a preset. After pressing the MENU button, this button lights and is enabled.
7		DELAY	Press to set the delay between confirming an action and the execution of the action.
8		ENT	Press to complete the input-output setup when using a one-digit number instead of two digits. For example, to enter input 5, you can press either 05 or 5, ENT. Press to enter the options in a setup menu.
9	IR Receiver	Infrared remote control sensor.	
10	IR LED	Lights yellow when receiving commands from the IR remote control transmitter.	



11	TAKE Button	Press to confirm actions (see <a href="#">Confirming a Switching Action</a> on page 19).
12	MENU Button	Press once to enable the ALL, OFF, STO and RCL buttons (see <a href="#">Using the Configuration Menus</a> on page 22). Press again to enter the configuration menu (see <a href="#">Using the Config Menu</a> on page 26). When in a Menu, press to cycle through the menu items.
13	LOCK Button	Press and hold for approximately 2 sec to lock/unlock the front panel buttons (see <a href="#">Locking the Front Panel Buttons</a> on page 21).
14	BREAKAWAY Button	Press to exit a Menu (see <a href="#">Using the Configuration Menus</a> on page 22).
15	DEFAULT SETUP Button	Press to recall the default setup (see <a href="#">Recalling the Default Setup</a> on page 21).
16	OUTPUTS/INPUTS LCD Display	Displays the outputs (upper row) switched to the selected inputs (lower row), (see <a href="#">Startup Display</a> on page 17). Displays user interface messages and menus.
17	Power Supplies	Supply power to the device. The unit includes two power supplies. A third one can be installed.



Figure 2: VS-6464DN-EM Front Panel Numeric Keypad

#	Feature	Function
18	◀ (Backward)	Press to shift the sliding window to the right (the LCD display only shows 13 cross-points out of a total of 16).
19	1, 2, 3, 4, 5, 6, 7, 8, 9, 0	Numeric keypad, 1 to 0.
20	▶ (Forward)	Press to shift the sliding window to the left (the LCD display only shows 13 cross-points out of a total of 16).

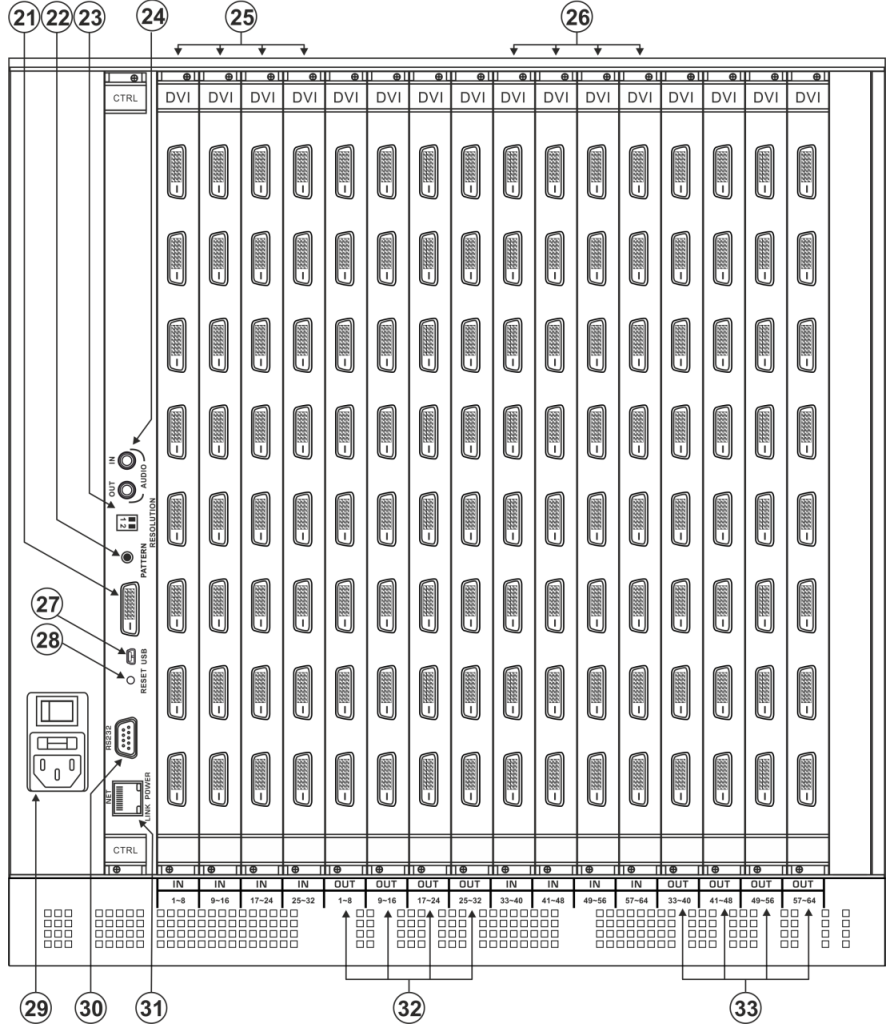


Figure 3: VS-6464DN-EM Rear Panel Showing DVI cards

#	Feature	Function
21	Test Module DVI Molex 24-pin Video Connector	Connect to one of the relevant video inputs/outputs to aid in troubleshooting (see <a href="#">Troubleshooting Video Problems</a> on page 46).
22	PATTERN Button	Press the button repeatedly to change the video pattern generated by the Test module (see <a href="#">Setting the Pattern of the Generated Video</a> on page 45).
23	RESOLUTION DIP-switches	Set the resolution for video generated by the Test module (see <a href="#">Setting the Resolution of the Generated Video</a> on page 44).
24	Test Module 3.5mm Mini Jack Unbalanced Analog Audio Connector	Connect to one of the relevant audio inputs/outputs to aid in troubleshooting (see <a href="#">Troubleshooting Audio Problems</a> on page 47).
25	IN 1~32 Connectors	INPUTS Connect to the relevant video sources, depending on the cards installed (1 to 32, see <a href="#">Connecting the VS-6464DN-EM</a> on page 11).
26	IN 33~64 Connectors	
27	USB Virtual COM Port USB Mini-B Connector	Connect to a PC or remote controller (see <a href="#">Connecting to the VS-6464DN-EM via USB (VCOM)</a> on page 14) and perform firmware upgrade of the device and compatible input/output cards (see <a href="#">Upgrading VS-6464DN-EM and Input / Output Card Firmware</a> on page 53).
28	RESET Button	For future use.

#	Feature	Function
29	AC Mains Power Module	Power supply 1: Fuse holder and power cord socket. Connect to the AC mains supply.
30	RS-232 9-pin D-sub Port	Connect to a PC or remote controller (see <a href="#">Connecting to the VS-6464DN-EM via RS-232</a> on page 14) and perform firmware upgrade of the device and compatible input/output cards (see <a href="#">Upgrading VS-6464DN-EM and Input / Output Card Firmware</a> on page 53).
31	NET Ethernet RJ-45 Connector	Connect to a PC or controller via the Ethernet LAN (see <a href="#">Connecting to the VS-6464DN-EM via Ethernet</a> on page 14) and perform firmware upgrade of the device and compatible input/output cards (see <a href="#">Upgrading VS-6464DN-EM and Input / Output Card Firmware</a> on page 53). LINK LED flashes when communication is active. POWER LED lights when the interface receives power.
32	OUT 1~32 Connectors	OUTPUTS
33	OUT 32~64 Connectors	
		Connect to the relevant video acceptors, depending on the cards installed (1 to 32, see <a href="#">Connecting the VS-6464DN-EM</a> on page 11).
		Connect to the relevant video acceptors, depending on the cards installed (33 to 64, see <a href="#">Connecting the VS-6464DN-EM</a> on page 11).

# Mounting VS-6464DN-EM

This section provides instructions for mounting **VS-6464DN-EM**. Before installing, verify that the environment is within the recommended range:



- Operation temperature – 0° to 40°C (32 to 104°F).
- Storage temperature – -40° to +70°C (-40 to +158°F).
- Humidity – 10% to 90%, RHL non-condensing.



- **VS-6464DN-EM** must be placed upright in the correct horizontal position.



**Caution:**

- Mount **VS-6464DN-EM** before connecting any cables or power.



**Warning:**

- Ensure that the environment (e.g., maximum ambient temperature & air flow) is compatible for the device.
- Avoid uneven mechanical loading.
- Appropriate consideration of equipment nameplate ratings should be used for avoiding overloading of the circuits.
- Reliable earthing of rack-mounted equipment should be maintained.

## To mount the VS-6464DN-EM on a rack

Attach both ear brackets by removing the screws from each side of the machine and replacing those screws through the ear brackets or place the machine on a table.



For more information go to [www.kramerav.com/downloads/VS-6464DN-EM](http://www.kramerav.com/downloads/VS-6464DN-EM)

# Connecting the VS-6464DN-EM



Always switch off the power to each device before connecting it to your **VS-6464DN-EM**. After connecting your **VS-6464DN-EM**, connect its power and then switch on the power to each device.



You do not have to connect all the inputs and outputs, connect only those that are required. In the following example, only two inputs and two outputs are connected.

The configuration of DVI input/output cards shown in [Figure 4](#) is merely a sample representation and different input / output cards may be mixed as required (for limitations, see [Port Numbering](#) on page [12](#)). Exactly the same principles apply to installations using other card types.

To connect the **VS-6464DN-EM**, as illustrated in the example in [Figure 4](#), do the following:

1. Connect up to 64 DVI video sources (for example, computer graphics sources).
2. Connect up to 64 DVI video acceptors, (for example, a plasma display and DVI LCD display).
3. If required, connect a PC or remote controller to the RS-232 port (see [Connecting to the VS-6464DN-EM via RS-232](#) on page [14](#)) and/or the Ethernet port (see [Connecting to the VS-6464DN-EM via Ethernet](#) on page [14](#)).
4. Connect the power cord.
5. If necessary, review and set the system configuration using the Menu (see [Using the Configuration Menu](#) on page [22](#)).



Given an input signal that is HDCP encoded, the **VS-6464DN-EM** outputs a signal only if the output port to which it is switched supports HDCP.

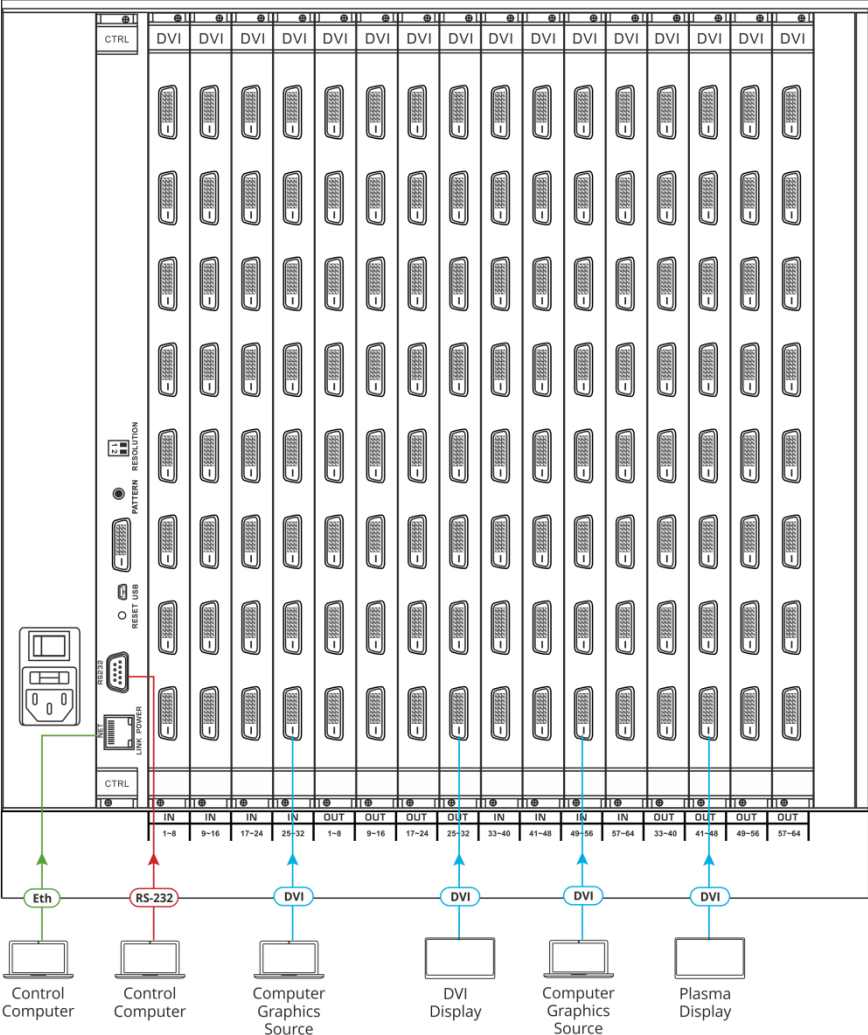


Figure 4: Connecting the VS-6464DN-EM

## Port Numbering

On each card there are eight physical ports numbered sequentially from top to bottom and left to right. [Figure 5](#) displays a sample numbering showing only the bottom of each card.

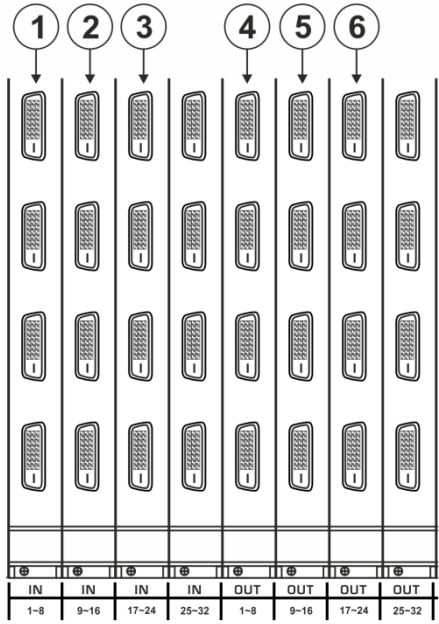


Figure 5: Sample Port Numbering

Diagram #	Actual Port Number
1	IN 1 – IN 8
2	IN 9 – IN 16
3	IN 17 – IN 24
4	OUT 1 – OUT 8
5	OUT 9 – OUT 16
6	OUT 17 – OUT 24

### EDID Numbering Examples

The following EDID configuration is based on the port numbering shown in [Figure 5](#) and lists requested switching configurations and their results.

EDID Request	EDID Sent
From OUT 21	Blank (256 bytes of 0xFF)
From IN 25	None (error message displayed)

**i** AV data flow is: **source > VS-6464DN-EM > display**. EDID information flow is: **display > VS-6464DN-EM > source**, which means that the EDID input is the display side and the EDID output is the AV source side. This is the reverse of the AV data flow direction.

**When assigning EDIDs, note that the top row of the LCD display labeled OUTPUTS relates to the ports connected to the sources (AV inputs), and the bottom row of the LCD display labeled INPUTS relates to the ports connected to displays (AV outputs).**

In [Figure 6](#), the EDID from EDID input 8 (VS-6464DN-EM Output port 8) has been assigned to all EDID outputs (VS-6464DN-EM Input ports).

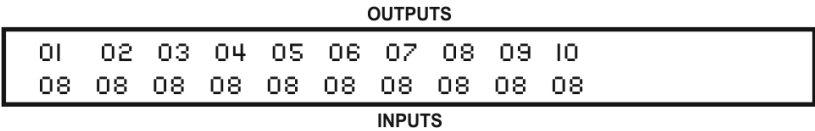


Figure 6: EDID Numbering Assignment

---

## Connecting to the VS-6464DN-EM via RS-232

You can connect to the **VS-6464DN-EM** via an RS-232 connection using, for example, a PC. Note that a null-modem adapter/connection is not required.

### To connect to the VS-6464DN-EM via RS-232:

- Connect the RS-232 9-pin D-sub rear panel port on the **VS-6464DN-EM** unit via a 9-wire straight cable (only pin 2 to pin 2, pin 3 to pin 3, and pin 5 to pin 5 need to be connected) to the RS-232 9-pin D-sub port on your PC.

---

## Connecting to the VS-6464DN-EM via USB (VCOM)

The device's USB port can work as a virtual COM (VCOM) port. Verify that the USB port on the PC that connects to the **VS-6464DN-EM** is configured as a VCOM port. You may need to install a driver to do this. You can use a tool such as Hercules or K-Config to use Protocol 3000 commands over USB (see [Protocol 3000](#) on page 62). You can also use K-Upload to upgrade firmware over USB (see [Upgrading Firmware Using K-Upload](#) on page 53).

---

## Connecting to the VS-6464DN-EM via Ethernet

You can connect to the **VS-6464DN-EM** via Ethernet using either of the following methods:

- Directly to the PC using a crossover cable (see [Connecting the Ethernet Port Directly to a PC](#) on page 14).
- Via a network hub, switch, or router, using a straight-through cable (see [Connecting the Ethernet Port via a Network Hub or Switch](#) on page 16).



If you want to connect via a router and your IT system is based on IPv6, speak to your IT department for specific installation instructions.

### Connecting the Ethernet Port Directly to a PC

You can connect the Ethernet port of the **VS-6464DN-EM** directly to the Ethernet port on your PC using a crossover cable with RJ-45 connectors.



This type of connection is recommended for identifying the **VS-6464DN-EM** with the factory configured default IP address.

After connecting the **VS-6464DN-EM** to the Ethernet port, configure your PC as follows:

1. Click **Start > Control Panel > Network and Sharing Center**.
2. Click **Change Adapter Settings**.
3. Highlight the network adapter you want to use to connect to the device and click **Change settings of this connection**.

The Local Area Connection Properties window for the selected network adapter appears as shown in [Figure 7](#).



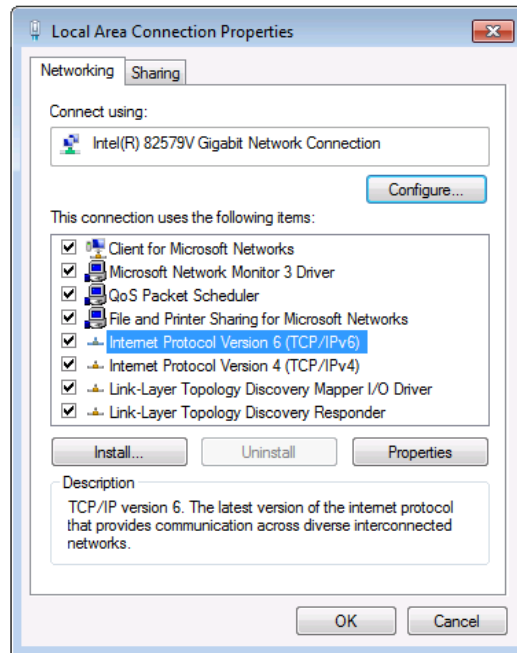


Figure 7: Local Area Connection Properties Window

4. Highlight either **Internet Protocol Version 6 (TCP/IPv6)** or **Internet Protocol Version 4 (TCP/IPv4)** depending on the requirements of your IT system.
5. Click **Properties**.

The Internet Protocol Properties window relevant to your IT system appears as shown in [Figure 8](#) or [Figure 9](#).

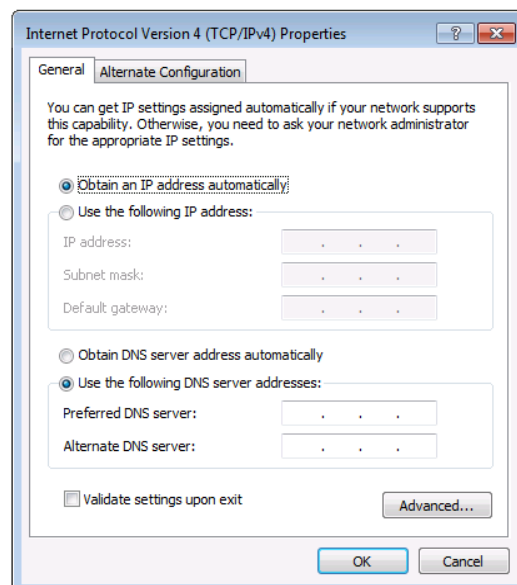


Figure 8: Internet Protocol Version 4 Properties Window

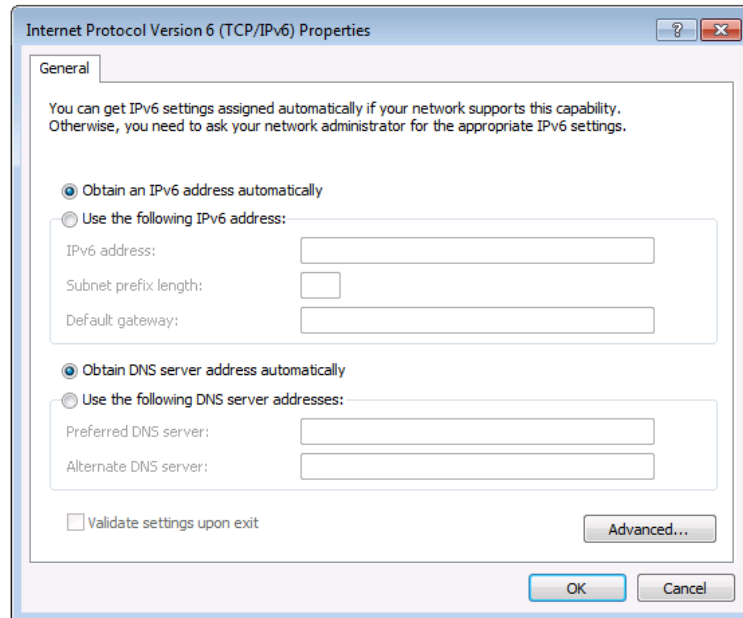


Figure 9: Internet Protocol Version 6 Properties Window

6. Select **Use the following IP Address** for static IP addressing and fill in the details as shown in [Figure 10](#).  
For TCP/IPv4 you can use any IP address in the range 192.168.1.1 to 192.168.1.255 (excluding 192.168.1.39) that is provided by your IT department.

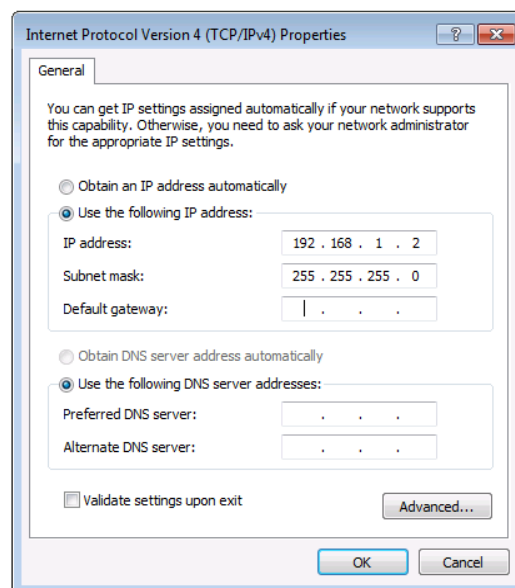


Figure 10: Internet Protocol Properties Window

7. Click **OK**.
8. Click **Close**.

## Connecting the Ethernet Port via a Network Hub or Switch

You can connect the Ethernet port of the **VS-6464DN-EM** to the Ethernet port on a network hub or using a straight-through cable with RJ-45 connectors.

# Operating Your Video Matrix Switcher

This section describes:

- The startup display (see [Startup Display](#) on page [17](#)).
- Using the selector buttons (see [Using the Selector Buttons](#) on page [18](#)).
- Confirming actions (see [Confirming Actions](#) on page [18](#)).
- Switching options (see [Switching Actions](#) on page [19](#)).
- Locking the front panel (see [Locking the Front Panel Buttons](#) on page [21](#)).

---

## Startup Display

After switching on the power, the LCD display shows the following screens in sequence (text in the LCD Display may vary according to machine settings).

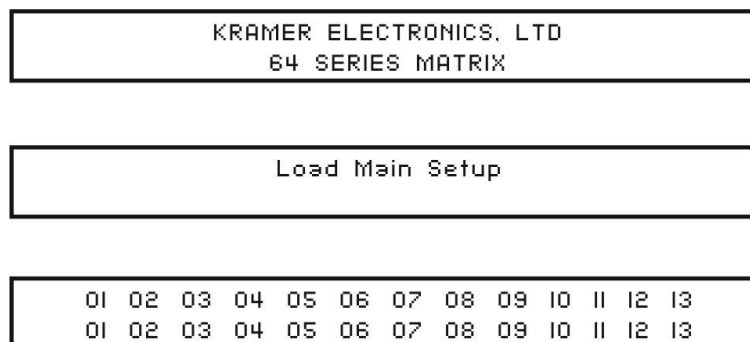


Figure 11: Default Startup Status Display Sequence

The **VS-6464DN-EM** does not have separate output and input buttons. Instead, the front panel includes a numeric keypad within the Selector Buttons area (see [Defining the VS-6464DN-EM 8x8 to 64x64 Modular Multi-Format Managed Digital Matrix Switcher](#) on page [6](#)). This numeric keypad lets you enter both the output and input numbers as well as various numeric configuration values (see [Using the Selector Buttons](#) on page [18](#)).

When the unit is powered-on, the last matrix setup that was used is loaded. Use either the setup recall (records a stored configuration from a preset, see [Setup Menu—6: recall setup XX, Recalling a Preset](#) on page [25](#)) or default setup recall (for quick retrieval of a commonly used programmable default setup, see [Recalling the Default Setup](#) on page [21](#)) functions to retrieve other setups.

## Viewing the Display

[Figure 11](#) shows the output-input matrix on the LCD display. The LCD display can show only 13 out of the 64 available matrix combinations at once. To view any of the matrix combinations use the ◀ or the ▶ buttons on the front panel to shift the sliding window to the right or left.

This sliding window functionality is enabled when:

- The switcher is in between operations (waiting for its next operation while all previous operations are complete or cancelled).
- Recalling a setup using the ◀ or ▶ buttons.



When entering an output/input combination, the contents of the LCD display automatically shift to indicate the current status of the selected output.

---

## Using the Selector Buttons

For numbers between 1 and 9, the **VS-6464DN-EM** can handle two digit numbers as well as single digit numbers. When entering a single digit number (for example 5), you can either press 0 followed by 5, or 5 followed by ENTER.

Pressing 00 (or 0, ENTER) is only relevant for an input and is used to disconnect the currently entered output number from the input.

For example, the following display indicates that outputs 8 and 12 are disconnected from any input (note that the corresponding inputs in the second line are blank):

```

06 07 08 09 10 11 12 13
12 08      10 14 13      06

```

The ESC button is used to cancel an operation without affecting the current status. For example, if you enter an incorrect number by mistake, press the ESC button to cancel the operation.



At any stage, if no button is pressed within approximately 15 seconds, the automatic timeout causes the **VS-6464DN-EM** to exit the operation and revert to the output/input display.

---

## Confirming Actions

You can choose to work in the At Once (default, for all actions except storing/recalling) or the Confirm mode.

In the At Once mode:

- The TAKE button does not light.
- Pressing an OUT-IN combination implements the switch without further user confirmation.
- You save time as execution is immediate and actions require no user confirmation.
- No protection is offered to correct an erroneous action.

In the Confirm mode:

- The TAKE button lights.
- You enter an action and then confirm it by pressing the TAKE button.

- Every action requires user confirmation, protecting against erroneous actions.
- Execution is postponed until you confirm the action.



Failure to press the TAKE button within a few seconds results in the action timing out automatically.

## Toggle Between the At Once and Confirm Modes

**To toggle between the At Once and Confirm modes:**



If the TAKE button is flashing, you cannot toggle between the At Once and Confirm modes. A flashing TAKE button indicates that an action is currently pending confirmation.

1. Press TAKE to toggle between the At Once mode and the Confirm mode.  
The TAKE button lights and actions now require user confirmation.
2. Press the lit TAKE button to toggle from the Confirm mode back to the At Once mode.  
The TAKE button is no longer lit and actions no longer require user confirmation.

## Confirming a Switching Action

Actions only require confirmation when the device is in the Confirm mode.

**To confirm a switching action:**

1. Using the numeric keypad, enter an output-input combination.  
The TAKE button flashes.
2. Press the flashing TAKE button to confirm the action.  
The action is confirmed and the TAKE button lights.

---

## Switching Actions

This section describes how to:

- Switch one input to one output (see [Switching One Input to One Output](#) on page 19).
- Switch several inputs to several outputs (see [Switching Several Inputs to Several Outputs](#) on page 20).
- Turn off several outputs (see [Turning an Output Off](#) on page 20).

### Switching One Input to One Output

**To switch one input to one output:**

1. Using the numeric keypad, enter the required output (in this example, 12).  
The following is displayed:

```
06 07 08 09 10 11 12 13
                        In__ => Out 12
```

The left-hand side of the display shows a section of the output/input display automatically sliding the content to include output 12.

2. Using the numeric keypad, enter the required input (in this example, 14):
  - In the At Once mode, the switching takes place immediately and the LCD display shows a segment of the input-output status that includes the switched input and output (for example, 14-12).  
In the Confirm mode, the LCD display shows the following:  
In 14 => Out 12  
Incomplete actions time out after approximately 15 seconds.
  - In the Confirm mode, press the flashing TAKE button to switch the input to the output.

## Switching Several Inputs to Several Outputs

If you want to switch several inputs to several outputs, you must be in the Confirm mode.

In the Confirm mode you can enter a batch of several actions and then confirm the batch by pressing TAKE once (simultaneously switching several output-input combinations).

### To switch several inputs to several outputs in the Confirm mode:

1. Using the numeric keypad, enter an output-input combination.  
The TAKE button flashes.
2. Enter additional output-input combinations.  
The LCD display can show up to five pending actions (although the batch is not limited to five actions), as follows:  
  
09 => 06    05 => 07  
  
In this example, input 9 is set to switch to output 6 and input 5 is set to switch to output 7.
3. After entering all output/input combinations, press the flashing TAKE button to confirm the actions.  
The inputs switch to the respective outputs as shown on the LCD display and the TAKE LED is lit.

## Turning an Output Off

Turning off an output means that there is no input switched to this output. This is indicated on the display by the Input being blank underneath the relevant Output.

### To turn an output off:

1. Press MENU.  
The Menu buttons light and are enabled.
2. Press OFF (3) on the numeric keypad (see [Figure 2](#)).  
The following message is displayed:  
out\_\_ => OFF
3. Use the numeric keypad to turn the required output off.  
The output is turned off.

**To turn an output off in the Confirm mode:**

- Repeat the steps above and then press the flashing TAKE button to confirm the action.  
Alternatively, you can perform a switching operation (see [Switching One Input to One Output](#) on page 19) and set the input to 00.

**Turning Off Several Outputs**

To turn off several outputs in the Confirm mode, repeat the switching actions described in [Switching Several Inputs to Several Outputs](#) on page 20 but set the inputs to 00.

**Recalling the Default Setup**

You can store a commonly used setup as the default setup (see [Config Menu—Store Default Setup](#) on page 30) which can be recalled at any time.



This is not the setup that is loaded when the unit is turned on. When the unit is turned on, the setup that was last used before the unit was turned off is loaded.

**To recall the default setup:**

1. Press DEFAULT SETUP.

The DEFAULT SETUP button flashes and the following message is displayed:

```
recall DEFAULT setup
press FLASHING button to confirm
```

2. Press DEFAULT SETUP.

The following message is displayed:

```
all Setups and Connections change
press TAKE to confirm
```

The TAKE button flashes.

3. Press TAKE.

The default setup is recalled and the display reverts to the output-input display.

---

**Locking the Front Panel Buttons**

You can lock the **VS-6464DN-EM** to prevent tampering with the unit or prevent the settings from being changed accidentally via the front panel buttons. When the front panel is locked, you can still remotely operate the **VS-6464DN-EM** via RS-232 or Ethernet.

**To lock the front panel buttons:**

- Press and hold LOCK until the button lights.  
The front panel buttons are locked.

**To unlock the front panel buttons:**

- Press and hold LOCK until the button is no longer lit.  
The front panel buttons are unlocked.

# Using the Configuration Menus

The configuration menus let you configure the **VS-6464DN-EM** to best suit your needs. There are two configuration menus:

- Setup Menu—those that are accessed on a regular basis (for example, storing setups and setting the delay), see [Using the Setup Menu](#) on page [22](#).
- Config Menu—those that are accessed only occasionally (for example, setting the interface or communication protocol), see [Using the Config Menu](#) on page [26](#).

The following rules apply to the menu operation:

- If no selection is made within approximately 15 seconds, the operation times-out and the display reverts to the output/input display.
- At any point in the Menu, press ESC to move up one level or press BREAKAWAY to exit the Menu altogether.
- At any point in the Menu, only buttons that are active light or flash.

All of the procedures in this section assume that you are starting the procedure from the standard, operational output/input display.

---

## Using the Setup Menu

The Setup Menu provides access to settings that are regularly changed and comprises the following options:

- **1: inXX=>ALL**, switching one input to all outputs (see [Setup Menu—1: inXX=>ALL, Switching One Input to all Outputs](#) on page [23](#)).
- **3: outXX=OFF**, turning off an output (see [Setup Menu—3: outXX=>OFF, Turning an Output Off](#) on page [23](#)).
- **7: EDID**, assignment to an output (see [Setup Menu—7: EDID, Assignment to an Input](#) on page [23](#)).
- **9: Delay** setting for an output (see [Setup Menu—9: Delay, Setting for an Output](#) on page [24](#)).
- **4: store setup XX**, storing the setup in a preset (see [Setup Menu—4: store setup XX, Storing the Setup in a Preset](#) on page [25](#)).
- **6: recall setup XX**, recalling a preset (see [Setup Menu—6: recall setup XX, Recalling a Preset](#) on page [25](#)).



## Setup Menu—1: inXX=>ALL, Switching One Input to all Outputs

This option switches one input to all outputs.

### To switch one input to all outputs:

1. Press MENU.  
The Setup Menu options are displayed.
2. Press 1 (ALL) on the numeric keypad (see [Figure 2](#)).  
The following is displayed:  
`in__ => ALL`
3. Using the numeric keys, enter the input to be switched to all outputs.  
The TAKE button flashes.
4. Press TAKE.  
The selected input is switched to all outputs. The display reverts to the output/input display showing that the selected input is switched to all outputs.

## Setup Menu—3: outXX=>OFF, Turning an Output Off

This option turns an output off.

### To turn an output off:

1. Press MENU.  
The Setup Menu options are displayed.
2. Press 3 (OFF) on the numeric keypad (see [Figure 2](#)).  
The following is displayed:  
`out__ => OFF`
3. Using the numeric keys, enter the output to be turned off.  
The TAKE button flashes.
4. Press TAKE.  
The selected output is turned off. The display reverts to the output/input display showing that the selected output is turned off with the input being blank.

## Setup Menu—7: EDID, Assignment to an Input

This option assigns an EDID to between one and eight inputs in non-volatile storage. More than eight EDID assignments must be assigned in multiple batches.

Each input on the VS-6464DN-EM has a factory default EDID loaded (see [Factory Default EDID](#) on page 57). The EDID for each input can be changed independently via the menu (described below) or by uploading an EDID binary file to each input via the RS-232 port.



It is necessary to have a display/device connected to the output from which you want to read the EDID. Failure to do so results in the default EDID being written to storage.

**To assign an EDID to between one and eight inputs:**

1. Press MENU.  
The Setup Menu options are displayed.
2. Press 7 (EDID) on the numeric keypad (see [Figure 2](#)).  
The following is displayed:

```

SETUP EDID
ENTER to View EDID and Set EDID

```

3. Press ENT.  
The current EDID matrix configuration is displayed.
4. Using the numeric keys, enter the input in which to store the EDID (in this example, 08), and enter the output (in this example, 05) from which to read the EDID.  
The following is displayed:

```

01 02 03 04 05 06 07 08
                                05 out05 => in08

```

The TAKE button flashes.

5. Repeat Step 4 for up to eight inputs.
6. Press TAKE.  
The EDID is stored and passed through to the input.  
The display reverts to the output/input display.

**To view the EDID assignments:**

1. Press MENU.  
The Setup Menu options are displayed.
2. Press 7 (EDID) on the numeric keypad (see [Figure 2](#)).  
The following is displayed:

```

SETUP EDID
ENTER to View EDID and Set EDID

```

3. Press ENT.  
The current EDID matrix configuration is displayed. In this example, input 07 is assigned to output 05, all other EDID values are default.

```

05 06 07 08 09 10
    05

```

**Setup Menu—9: Delay, Setting for an Output**

This option sets the time delay for an output which lapses between entering a switching action and the execution of the action. This delay can be set for each output independently. The delay is defined in units of 200ms and ranges from 0 to 15, providing delays of between 0 and 3 seconds (15 x 200ms = 3 seconds).

**To set the execution delay for an output:**

1. Press MENU.  
The Setup Menu options are displayed.

2. Press 9 (DELAY) on the numeric keypad (see [Figure 2](#)).  
The output/delay times display is shown.
3. Using the numeric keys, enter the output (in this example, 03).  
The following is displayed:

```

01 02 03 04 05 06 07 08
                                DLY__ =>out03

```

4. Using the numeric keys, enter the number of delay units.
5. Press TAKE.  
The selected output delay is set. The display reverts to the output/input display.

## Setup Menu—4: store setup XX, Storing the Setup in a Preset

This option stores the current setup in a preset (1 to 60).

### To store the current setup in a preset:

1. Press MENU.  
The Setup Menu options are displayed.
2. Press 4 (STO) on the numeric keypad (see [Figure 2](#)).  
The following is displayed:

```
store => __
```

3. Using the numeric keys, enter the preset (1 to 60) in which to store the current setup.  
The following is displayed:

```
Wait ....
```

After a few seconds, if the preset is not empty, the following is displayed:

```

SETUP NOT EMPTY
CONFIRM

```

The TAKE button flashes.

4. Press TAKE.  
The setup is stored in the selected preset for subsequent recall. The display reverts to the output/input display.

## Setup Menu—6: recall setup XX, Recalling a Preset

This option recalls a stored configuration from a preset (1 to 60).

### To recall a stored configuration:

1. Press MENU.  
The Setup Menu options are displayed.
2. Press 6 (RCL) on the numeric keypad (see [Figure 2](#)).  
The following is displayed:

```
recall <= __
```

3. Using the numeric keys, enter the preset (in this example, 02) to recall.  
The following is displayed:

```
Wait ....
```

After a few seconds, the following is displayed on the right hand side:

```
CONFIRM
RECALL <= 02
```

The TAKE button flashes.

4. Press TAKE.

The preset is recalled. The display reverts to the output/input display.

## Using the Config Menu

The Config Menu provides access to configuration settings that are not regularly changed and comprises the following options:

- Input signal detection display ([Config Menu—Input Signal Detection Display](#) on page [27](#))
- Input port parameter setting ([Config Menu—Setting Input Port Parameters](#) on page [27](#)).
- Output load detection display (see [Config Menu—Output Load Detection Display](#) on page [28](#)).
- Output port parameter setting ([Config Menu—Setting Output Port Parameters](#) on page [29](#)).
- Storing the default setup ([Config Menu—Store Default Setup](#) on page [30](#)).
- Total matrix reset ([Config Menu—Total Matrix Reset](#) on page [30](#)).
- Display firmware versions ([Config Menu—Display Firmware Versions](#) on page [31](#)).

### To enter the Config Menu:

- Press MENU twice. The MENU button lights and the following message is displayed:

```
Start configuration menu
MENU to view setups ENTER to change them
```

When browsing through the configuration menu, enabled buttons light or flash.

### Use the Config Menu as follows:

1. Press the MENU button to cycle through the menu items.  
The LCD display shows the current status of the selected menu item.
2. Press the ENT button to enter a submenu.
3. After entering a submenu, you can select between several options.  
Select an option by pressing one of the illuminated buttons in the Selector Buttons area.
4. After selecting the desired option, a description of the desired change is displayed and the TAKE button flashes.
5. Press the flashing TAKE button to confirm the change.  
A description of the current state is displayed for about one second. The unit automatically switches to the next item in the menu.

## Config Menu—Input Signal Detection Display

This option displays a list of inputs and indicates on which of them signals have been detected.

### To display a list of inputs that have detected signals:

1. Press MENU twice.

The following message is displayed:

```
start configuration menu
MENU to view setup ENTER to change them
```

2. Press MENU.

The following is displayed:

```
IN:   01  02  03  04  05  06  07  08  09  10  11
OUT:  o   X   o   o   o   o   X   o   o   o   X
```

o indicates that a signal is detected and X indicates that no signal is detected on the relevant input.

3. Do one of the following:

- Press BREAKAWAY to exit the Config Menu.
- Wait approximately 15 seconds for the operation to time out.
- Press MENU to move to the next Config Menu option.

## Config Menu—Setting Input Port Parameters

This option sets input port-specific parameters. Ports that show an X have no parameters available to modify. Ports that show an o have parameters available to modify. The parameters that are available, such as, audio balance, depend on the type of card installed and whether the card is an input or an output card (see [Using the Input / Output Cards](#) on page 33 for information on the input / output cards and their parameters).

### To set parameters for a port:

1. Press MENU twice.

The following message is displayed:

```
start configuration menu
MENU to view setup ENTER to change them
```

2. Press MENU until a display is shown similar to the following:

```
IN:   01  02  03  04  05  06  07  08  09  10  11
SET:  X   X   X   X   o   o   X   X   o   o   X
```

X indicates that there are no modifiable parameters for the associated port and o indicates that there are modifiable parameters for the associated port.

3. Press TAKE to enter the list of ports.

The cursor flashes on a selected port.

4. Select the required port using the left and right arrow buttons.

5. Press TAKE to enter the parameters list.

A message similar to the following is displayed with the relevant port number in place of 06:

```
IN:    06
SET:   Reset Input
```

6. To select the next parameter press the right arrow button (see [Using the Input / Output Cards](#) on page 33 for available parameters).

Or:

7. To enter the selected parameter press TAKE.  
The parameter options are displayed.
8. Select the required action or number using the keypad numbers and arrows.
9. Press TAKE to save the change.



The parameter change is not implemented on the system until you press TAKE.

10. Repeat from Step 6 to modify additional parameters.

11. Do one of the following:

- Press BREAKAWAY to exit the Config Menu.
- Wait approximately 15 seconds for the operation to time out.
- Press MENU to exit to the parameter list.

## Config Menu—Output Load Detection Display

This option displays a list of outputs and indicates which have loads attached to them.

### To display a list of outputs and attached loads:

1. Press MENU twice.

The following message is displayed:

```
start configuration menu
MENU to view setup ENTER to change them
```

2. Press MENU until the following is displayed:

```
OUT:    01  02  03  04  05  06  07  08  09  10  11
LOAD:   o   X   o   o   o   o   X   o   o   o   X
```

o indicates that a load is attached and X indicates that no load is detected on the relevant output.

3. Do one of the following:

- Press BREAKAWAY to exit the Config Menu.
- Wait approximately 15 seconds for the operation to time out.
- Press MENU to move to the next Config Menu option.

## Config Menu—Setting Output Port Parameters

This option sets port-specific parameters. Ports that show an X have no parameters available to modify. Ports that show an o have parameters available to modify. The parameters that are available, such as, audio balance, depend on the type of card installed and whether the card is an input or an output card. Tables listing output cards and their parameters can be found at the end of this section.

### To set parameters for a port:

1. Press MENU twice.

The following message is displayed:

```
start configuration menu
MENU to view setup ENTER to change them
```

2. Press MENU until a display is shown similar to the following:

```
OUT:  01  02  03  04  05  06  07  08  09  10  11
SET:  o   o   X   X   o   o   o   o   X   X   X
```

X indicates that there are no modifiable parameters for the associated port and o indicates that there are modifiable parameters for the associated port.

3. Press TAKE to enter the list of ports.

The cursor flashes on a selected port.

4. Select the required port to modify using the left and right arrow buttons.

5. Press TAKE to enter the parameters list.

A message similar to the following is displayed with the relevant port number in place of 06:

```
OUT: 06
SET: Reset SubBoard
```

6. To select the next parameter press the right arrow button (see [Using the Input / Output Cards](#) on page 33 for available parameters).

Or:

7. To enter the displayed parameter press TAKE.

The parameter options are displayed.

8. Select the required action or number using the keypad numbers and arrows.

9. Press TAKE to save the change.



The parameter change is not implemented on the system until you press TAKE.

10. Repeat from Step 6 to modify other parameters.

11. Do one of the following:

- Press BREAKAWAY to exit the Config Menu.
- Wait approximately 15 seconds for the operation to time out.
- Press MENU to exit to the parameter list.

## Config Menu—Store Default Setup

This option lets you store the current setup as the default setup. The default setup can be recalled at any time using the DEFAULT SETUP button (see [Recalling the Default Setup](#) on page 21).



This is not the setup that is loaded when the unit is switched on.

### To store the current setup as the default setup:

1. Press MENU twice.

The following message is displayed:

```
start configuration menu
MENU to view setup ENTER to change them
```

2. Press MENU until the following is displayed:

```
store DEFAULT setup
press ENTER to store
```

3. Press ENT to store the current configuration as the default configuration.

The following is displayed:

```
current matrix stage is OKAY?
press TAKE to confirm
```

4. Press TAKE.

The following is displayed:

```
current matrix stage
store as DEFAULT setup
```

This indicates that the current setup is stored as the default setup. After a few seconds the next option on the Config Menu is displayed.

## Config Menu—Total Matrix Reset

This option lets you turn all outputs off or reset the unit to its factory default settings.

### To reset the matrix setup:

1. Press MENU twice.

The following message is displayed:

```
start configuration menu
MENU to view setup ENTER to change them
```

2. Press MENU until the following is displayed:

```
TOTAL MATRIX RESET
ESC: exit    ENT: submenu
```

3. Press ENT to enter the Reset Submenu.

The following is displayed:

```
COMPLETELY MATRIX RESET
1:ALL outputs OFF  2:Factory default
```

4. Press 1 to turn off all outputs or 2 to perform a factory reset of all options.





Selecting option 2 to perform a factory default reset clears all setups, options and configuration.

5. Press TAKE and wait a few seconds.

The following is displayed:

```
Are you Absolutely sure !!!
Once more TAKE to confirm
```

6. Press TAKE.

The following is displayed:

```
Matrix erased!!!
Please, wait ...
```

The matrix and device configuration are erased. After a few seconds the next option on the Config Menu is displayed.

## Config Menu—Display Firmware Versions

This option displays the main and front firmware versions.

### To display the firmware versions:

1. Press MENU twice.

The following message is displayed:

```
start configuration menu
MENU to view setup ENTER to change them
```

2. Press MENU until the following is displayed:

```
Main Firmware Version:      5.0
Front Firmware Version:     5.0
```

3. Either:

- Press BREAKAWAY to exit the Config Menu.
- Wait approximately 15 seconds for the operation to time out.

# Configuring the Number of Installed Input and Output Ports

After installing or removing a module you can set the number of input and output ports so that the VS-6464DN-EM displays only the installed modules. Refer to [Port Numbering](#) on page [12](#) for an explanation of port numbering before setting the number of input and output ports.

## To set the number of input or output ports:

1. Press ESC, ENT and LOCK together.

The following is displayed:

```
Configuration Device
```

2. Press ENT.

The following is displayed:

```
Test Board: 1  MaxInput:65  MaxOutput:65
```



The number of input and output ports can only be set in units of eight, for example, 8 x 8, 64 x 8 or 40 x 16, and not 5 x 4 or 12 x 17.

3. Using the numeric keys, enter the number of input and output ports installed.  
The TAKE button flashes.
4. Press TAKE.  
The number of installed ports is saved and the display reverts to the output/input display.
5. Reboot the device by turning the power off and then on again.



If you customized the number of displayed ports before installing a new module, you may need to re-customize the displayed ports to reflect your hardware change.

# Using the Input / Output Cards

This section defines the input / output cards and their relevant parameters.



Not all options are displayed for every menu selection. Some parameters depend on the specific selection of other parameters.

The volume control provides only attenuation, not gain. Hence, setting volume to 100% provides 0 attenuation.

## Defining the HDCP-IN8-F64 / HDCP-OUT8-F64

The **HDCP-IN8-F64** is an 8-Input DVI (HDCP) Card (F-64):



The **HDCP-OUT8-F64** is an 8-Output DVI (HDCP) Card (F-64):



## HDCP-IN8-F64 / HDCP-OUT8-F64 Configuration

The **HDCP-IN8-F64** configuration table appears as follows:

HDCP-IN8-F64 Input Card		
Parameter	Description	Default
HDCP	Turn HDCP on and off. *1=EN, 0=DIS.	1

The **HDCP-OUT8-F64** configuration table appears as follows:

HDCP-OUT8-F64 Output Card		
Parameter	Description	Default
HDMI	Sets the output signal format (Display, DVI). Display—the output is set automatically based on the EDID of the connected display. DVI—Force the output to be DVI. <b>Note:</b> When selecting the DVI option and fast switching is enabled, you must ensure that the source is DVI compatible.	Display
Deep Color	Sets maximum color bit depth (Auto, 8 bit). Auto—Set the color depth automatically. 8 bit—Limit the color depth to 8 bits.	Auto
Switch Speed	When switching between different sources the switching time can be reduced by setting the fast switch level (Ex-fast Switch, Fast Switch or Normal Switch).	Ex-fast Switch

## HDCEP-IN8-F64 / HDCEP-OUT8-F64 Technical Specifications

The following table defines the technical specifications.

PORTS:	8 DVI-D on a DVI Molex 24-pin (F) connector
BANDWIDTH PER CHANNEL:	2.25Gbps
TOTAL BANDWIDTH:	6.75Gbps
MAXIMUM RANGE:	15m (49ft)
3D PASS THROUGH:	Supported
POWER CONSUMPTION:	Input card: 20.5W Output card: 23W
OPERATING TEMPERATURE:	0° to +40°C (32° to 104°F)
STORAGE TEMPERATURE:	-40° to +70°C (-40° to 158°F)
HUMIDITY:	10% to 90%, RHL non-condensing
DIMENSIONS:	39.5cm x 18cm x 2cm (15.6" x 7.1" x 0.8") W, D, H
SHIPPING DIMENSIONS	47.7cm x 23.5cm x 4.8cm (18.8" x 9.3" x 1.9") W, D, H)
PRODUCT WEIGHT:	0.65 kg (1.43 lbs) approx.
SHIPPING WEIGHT:	0.81 kg (1.79 lbs) approx.
STANDARD COMPLIANCE:	HDCEP, HDMI
SAFETY REGULATORY COMPLIANCE:	CE, FCC
ENVIRONMENTAL REGULATORY COMPLIANCE:	Complies with appropriate requirements of RoHs and WEEE

## Defining the DGKat-IN8-F64 / DGKat-OUT8-F64

The **DGKat-IN8-F64** is an 8-Input HDMI & RS-232 over DGKat Card (F-64):



The **DGKat-OUT8-F64** is an 8-Output HDMI & RS-232 over DGKat Card (F-64):



## DGKat-IN8-F64 / DGKat-OUT8-F64 Configuration


The **DGKat-IN8-F64** configuration table appears as follows:

DGKat-IN8-F64 Input Card		
Parameter	Description	Default
HDCEP	Turn HDCEP on and off. *1=EN, 0=DIS.	1

The **DGKat-OUT8-F64** configuration table appears as follows:

DGKat-OUT8-F64 Output Card		
Parameter	Description	Default
Switch Speed	When switching between different sources the switching time can be reduced by setting the fast switch level (Ex-fast Switch, Fast Switch or Normal Switch).	Ex-fast Switch

## DGKat-IN8-F64 / DGKat-OUT8-F64 Technical Specifications

 DGKat cards must be used with shielded twisted pair cables with RJ-45 connections, such as the Kramer **BC-UNIKAT**. For more information, see the *DGKat Installation Guide*. DGKat cards support Deep Color only at resolutions of 720p and lower.

The following table defines the technical specifications.

PORTS:	8 TP DGKat ports on RJ-45 8 Serial ports on 3-pin terminal blocks
BANDWIDTH PER CHANNEL:	Video: 1.65Gbps Serial Data: 19200
TOTAL BANDWIDTH:	Video: 4.95Gbps Serial Data: 19200
MAXIMUM RANGE:	90m (300ft) – 1080p @60Hz when using BC-UINIKat cable
3D PASS THROUGH:	Supported
POWER CONSUMPTION:	Input card: 12W Output card: 10W
OPERATING TEMPERATURE:	0° to +40°C (32° to 104°F)
STORAGE TEMPERATURE:	–40° to +70°C (–40° to 158°F)
HUMIDITY:	10% to 90%, RHL non-condensing
NET DIMENSIONS:	39.5cm x 18cm x 2cm (15.6" x 7.1" x 0.8") W, D, H
SHIPPING DIMENSIONS	47.7cm x 23.5cm x 4.8cm (18.8" x 9.3" x 1.9") W, D, H)
PRODUCT WEIGHT:	0.65 kg (1.43 lbs) approx.
SHIPPING WEIGHT:	0.81 kg (1.79 lbs) approx.
STANDARD COMPLIANCE:	HDCP 1.4
SAFETY REGULATORY COMPLIANCE:	CE
ENVIRONMENTAL REGULATORY COMPLIANCE:	Complies with appropriate requirements of RoHs and WEEE
INCLUDED ACCESSORIES:	Screw driver

### About the Power Connect™ Feature

The Power Connect™ feature here means that the **VS-6464DN-EM** can supply power to the TP transmitters and receivers (for example, the **TP-573** and **TP-574**).

### Serial Data Flow on DGKat Plus RS-232 Cards

Serial data present on the RS-232 port of a DGKat input /output card is not transmitted via the switcher. This data is transmitted over the TP cable of the same input / output card (see [Figure 12](#)).

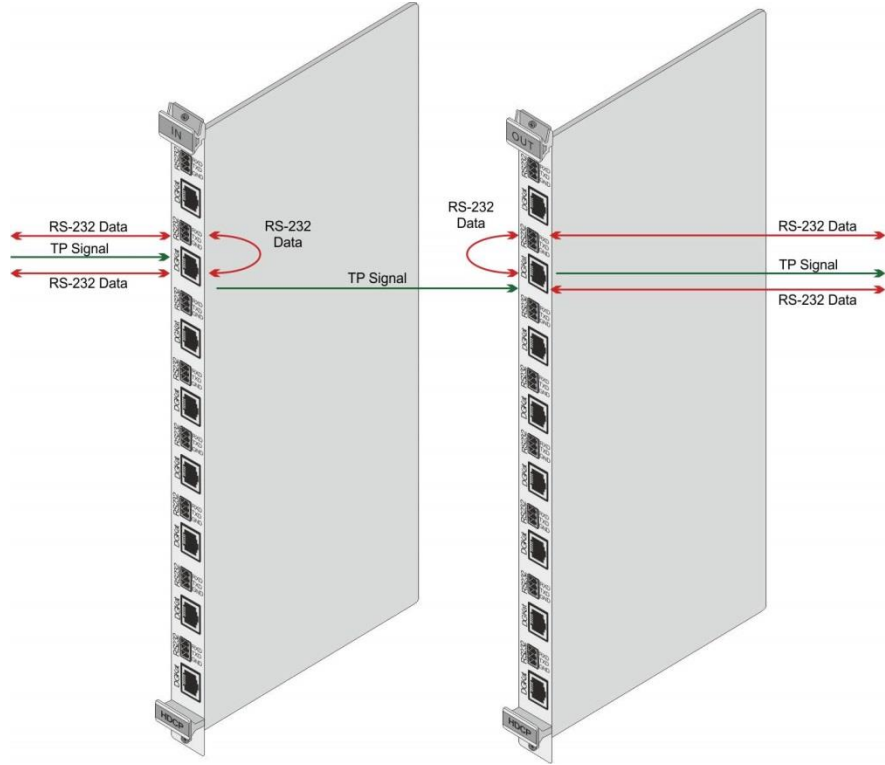


Figure 12: DGKat Card Serial Data Transmission

## Defining the F670-IN8-F64 / F670-OUT8-F64

F670 cards are fully compatible with the Kramer **670T/670R** and **671T/671R** HDMI/DVI transmitters and receivers for non-HDCP content.

The **F670-IN8-F64** is an 8-Input HDMI over OM3 Fiber Card (F-64):



The **F670-OUT8-F64** is an 8-Output HDMI over OM3 Fiber Card (F-64):



## F670-IN8-F64 / F670-OUT8-F64 Configuration

The **F670-IN8-F64** configuration table appears as follows:

F670-IN8-F64 Input Card		
Parameter	Description	Default
HDCCP	Turn HDCCP on and off. *1=EN, 0=DIS.	1

The **F670-OUT8-F64** configuration table appears as follows:

F670-OUT8-F64 Output Card		
Parameter	Description	Default
HDMI	Sets the output signal format (Display, DVI). Display—the output is set automatically based on the EDID of the connected display. DVI—Force the output to be DVI. <b>Note:</b> When selecting the DVI option and fast switching is enabled, you must ensure that the source is DVI compatible.	Display
Deep Color	Sets maximum color bit depth (Auto, 8 bit). Auto—Set the color depth automatically. 8 bit—Limit the color depth to 8 bits.	Auto
Switch Speed	When switching between different sources the switching time can be reduced by setting the fast switch level (Ex-fast Switch, Fast Switch or Normal Switch).	Ex-fast Switch

## F670-IN8-F64 / F670-OUT8-F64 Technical Specifications



F670 cards must be used with multi-mode glass fiber cables with SC connections, such as the Kramer **C-SC/SC/OM3**.

The following table defines the technical specifications.

PORTS:	8 SC
BANDWIDTH PER CHANNEL:	2.25Gbps
TOTAL BANDWIDTH:	6.75Gbps
MAXIMUM RANGE:	1700m (5570ft) – 1080p/60Hz
3D PASS THROUGH:	Supported
POWER CONSUMPTION:	Input / output card: 27W
OPERATING TEMPERATURE:	0° to +40°C (32° to 104°F)
STORAGE TEMPERATURE:	–40° to +70°C (–40° to 158°F)
HUMIDITY:	10% to 90%, RHL non-condensing
DIMENSIONS:	39.5cm x 18cm x 2cm (15.6" x 7.1" x 0.8") W, D, H
SHIPPING DIMENSIONS	47.7cm x 23.5cm x 4.8cm (18.8" x 9.3" x 1.9") W, D, H)
PRODUCT WEIGHT:	0.65 kg (1.43 lbs) approx.
SHIPPING WEIGHT:	0.81 kg (1.79 lbs) approx.
STANDARD COMPLIANCE:	HDCP 1.4
SAFETY REGULATORY COMPLIANCE:	CE
ENVIRONMENTAL REGULATORY COMPLIANCE:	Complies with appropriate requirements of RoHs and WEEE

## Defining the F610-IN8-F64 / F610-OUT8-F64

The **F610-IN8-F64** is an 8-Input DVI over 4LC Fiber Card (F-64):



The **F610-OUT8-F64** is an 8-Output DVI over 4LC Fiber Card (F-64):



### F610-IN8-F64 / F610-OUT8-F64 Configuration

N/A

### F610-IN8-F64 / F610-OUT8-F64 Technical Specifications



F610 cards must be used with multi-mode glass fiber cables with LC connections, such as the Kramer **C-4LC/4LC**.

The following table defines the technical specifications.

PORTS:	8 4 LC ports
BANDWIDTH PER CHANNEL:	1.65Gbps
TOTAL BANDWIDTH:	6.75Gbps
MAXIMUM RANGE:	400m (1310ft) using Multi Mode OM2 fiber
3D PASS THROUGH:	Not supported
POWER CONSUMPTION:	Input card: 14W Output card: 13W
OPERATING TEMPERATURE:	0° to +40°C (32° to 104°F)
STORAGE TEMPERATURE:	-40° to +70°C (-40° to 158°F)
HUMIDITY:	10% to 90%, RHL non-condensing
DIMENSIONS:	39.5cm x 18cm x 2cm (15.6" x 7.1" x 0.8") W, D, H
SHIPPING DIMENSIONS	47.7cm x 23.5cm x 4.8cm (18.8" x 9.3" x 1.9") W, D, H)
PRODUCT WEIGHT:	0.65 kg (1.43 lbs) approx.
SHIPPING WEIGHT:	0.81 kg (1.79 lbs) approx.
STANDARD COMPLIANCE:	DVI 1.0
SAFETY REGULATORY COMPLIANCE:	CE, FCC
ENVIRONMENTAL REGULATORY COMPLIANCE:	Complies with appropriate requirements of RoHs and WEEE



## Defining the DVI-IN8-F64 / DVI-OUT8-F64

The **DVI-IN8-F64** is an 8-Input DVI Card (F-64):



The **DVI-OUT8-F64** is an 8-Output DVI Card (F-64):



### DVI-IN8-F64 / DVI-OUT8-F64 Configuration

N/A

### DVI-IN8-F64 / DVI-OUT8-F64 Technical Specifications

The following table defines the technical specifications.

PORTS:	8 DVI-D on DVI Molex 24-pin (F) connectors
BANDWIDTH PER CHANNEL:	1.65Gbps
TOTAL BANDWIDTH:	4.95Gbps
MAXIMUM RANGE:	15m (49ft)
3D PASS THROUGH:	Not supported
POWER CONSUMPTION:	Input card: 6W Output card: 9W
OPERATING TEMPERATURE:	0° to +40°C (32° to 104°F)
STORAGE TEMPERATURE:	-40° to +70°C (-40° to 158°F)
HUMIDITY:	10% to 90%, RHL non-condensing
DIMENSIONS:	39.5cm x 18cm x 2cm (15.6" x 7.1" x 0.8") W, D, H
SHIPPING DIMENSIONS	47.7cm x 23.5cm x 4.8cm (18.8" x 9.3" x 1.9") W, D, H)
PRODUCT WEIGHT:	0.65 kg (1.43 lbs) approx.
SHIPPING WEIGHT:	0.81 kg (1.79 lbs) approx.
STANDARD COMPLIANCE:	DVI 1.0
SAFETY REGULATORY COMPLIANCE:	CE, FCC
ENVIRONMENTAL REGULATORY COMPLIANCE:	Complies with appropriate requirements of RoHs and WEEE

## Defining the VGAA-IN8-F64 / VGAA-OUT8-F64

The **VGAA-IN8-F64** is an 8-Input VGA with Analog Audio Card (F-64):



The **VGAA-OUT8-F64** is an 8-Output VGA with Analog Audio Card (F-64):



Audio output is accessed by connecting the two supplied Kramer **C-GF/GMAF-30** cables to each VGA port as illustrated in [Figure 13](#).

When a multi-channel audio input signal is routed to a card with stereo analog audio outputs, the analog audio out connectors output the front right and front left audio channels only.

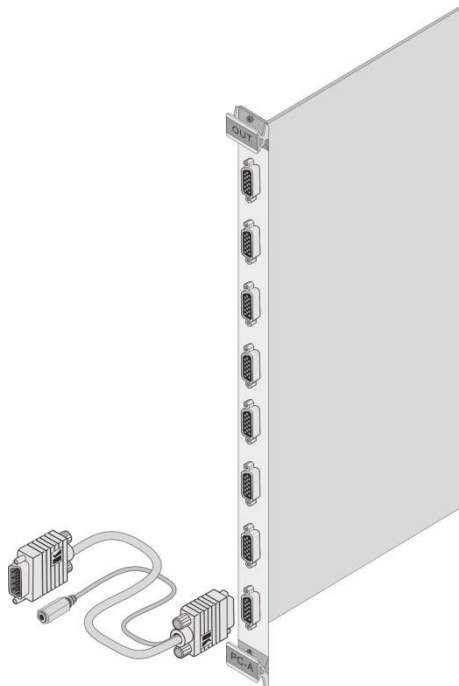


Figure 13: Accessing Audio over VGA

## VGAA-IN8-F64 / VGAA-OUT8-F64 Configuration

The **VGAA-IN8-F64** configuration table appears as follows:

VGAA-IN8-F64 Input Card		
Parameter	Description	Default
Resolution Detect	Auto, User Defined, Auto Adjust, (see note below table).	Auto
Phase Mode	Auto, User Defined, Auto Adjust, (see note below table).	Auto
Brightness	(0–63)	32
Contrast	(0–63)	32
Phase adjustment	(0–63) <b>Note:</b> This adjustment is only valid when Phase Mode Is set to User Defined mode.	As detected
Reset Input	Re-power—Power cycles the port. Factory default—Performs a factory reset of the port to default values.	Re-power

VGAA-IN8-F64 Input Card		
Parameter	Description	Default
Hor-Total Pixels	Set the value for total horizontal pictures. (1–7000)	As detected
Horizontal-Start	Set the value for horizontal start. (1–600)	As detected
Horizontal-Active	Set the value for horizontal active pixels. (1–4000)	As detected
Vertical-Start	Set the value for vertical start. (1–255)	As detected
Vertical-Active	Set the value for vertical active pixels. (1–3000)	As detected
Save Timing Para	(0–31)	N/A
Recall Timing Para	(0–31)	N/A
Volume	Sets the audio output volume (0–70).	50
Audio Balance	Sets the audio output channel balance (0–100).	50
Audio Bass	Sets the audio output bass level (0–15).	7
Audio Treble	Sets the audio output treble level (0–15).	7
Audio Mute	MUTE—Mutes the audio input. Non-MUTE—Unmutes the audio input. <b>Note:</b> When set to Mute, any change to the audio parameters automatically sets this to unmute.	Non-MUTE
R-offset	(0–63)	32
G-offset	(0–63)	32
B-offset	(0–63)	32
R-gain	(0–63)	32
G-gain	(0–63)	32
B-gain	(0–63)	32



The Auto Adjust feature requires the device to recalculate the parameters based on the currently connected source. The result may be different from the standard parameters for the currently set resolution. The result is saved in non-volatile memory and is recalled when the same source is used again. In order to revert to auto predefined parameters, either reset to factory setting with the relevant source connected or connect a different source.

The **VGAA-OUT8-F64** configuration table appears as follows:

VGAA-OUT8-F64 Output Card		
Parameter	Description	Default
Reset Output	Re-power: power cycles the port. Factory default: performs a factory reset of the port to default values.	Re-power
Switch Speed	When switching between different sources the switching time can be reduced by setting the fast switch level (Ex-fast Switch, Fast Switch or Normal Switch).	Ex-fast Switch
Volume	Sets the audio output volume (0–70).	50
Audio Balance	Sets the audio output channel balance (0–100).	50
Audio Bass	Sets the audio output bass level (0–15).	7
Audio Treble	Sets the audio output treble level (0–15).	7
Audio Mute	MUTE: mutes the audio input. Non-MUTE: unmutes the audio input. <b>Note:</b> When set to Mute, any change to the audio parameters automatically sets this to unmute.	Non-MUTE

VGAA-OUT8-F64 Output Card		
Parameter	Description	Default
OUT_HSYNC_INVERT	Sets the H_SYNC invert. (0, 1)	0
OUT_VSYNC_INVERT	Sets the V_SYNC invert. (0, 1)	0

## VGAA-IN8-F64 / VGAA-OUT8-F64 Technical Specifications

The following table defines the technical specifications.

PORTS:	8 VGA on 15-pin HD connectors 2 unbalanced analog audio on 3.5mm mini jack connectors (accessible via <b>C-GF/GMAF-30</b> cables)
BANDWIDTH:	450MHz
MAXIMUM RANGE:	10m (32ft)
POWER CONSUMPTION:	Input card: 35W Output card: 20W
OPERATING TEMPERATURE:	0° to +40°C (32° to 104°F)
STORAGE TEMPERATURE:	-40° to +70°C (-40° to 158°F)
HUMIDITY:	10% to 90%, RHL non-condensing
DIMENSIONS:	39.5cm x 18cm x 2cm (15.6" x 7.1" x 0.8") W, D, H
SHIPPING DIMENSIONS	54.8cm x 27.5cm x 10.6cm (21.6" x 10.8" x 4.2") W, D, H)
PRODUCT WEIGHT:	0.65 kg (1.43 lbs) approx.
SHIPPING WEIGHT:	0.81 kg (1.79 lbs) approx.
STANDARD COMPLIANCE:	-
SAFETY REGULATORY COMPLIANCE:	CE
ENVIRONMENTAL REGULATORY COMPLIANCE:	Complies with appropriate requirements of RoHs and WEEE
INCLUDED ACCESSORIES:	8 <b>C-GF/GMAF-30</b> cables

# Troubleshooting Video and Audio Problems

The **VS-6464DN-EM** includes an AV signal generator that can be used to diagnose video and audio issues in an operating environment.



The test module supports analog audio and can only be used for testing analog audio problems.

## Defining the Controller and Test Card

The **Controller and Test** card is a 2-Input/Output DVI with Analog Audio Card (F-64), preinstalled in the **VS-6464DN-EM** for setup, troubleshooting, and management purposes (see [Figure 3](#) for more information).



## Controller and Test Card Configuration

The **Controller and Test** card configuration table appears as follows when configured as an input card:

Controller and Test Card		
Parameter	Description	Default
Reset Input	Re-power—Power cycles the port. Factory default—Performs a factory reset to default values of the port.	Re-power
Audio Select	Selects the audio source: Auto—Audio signal selection is controlled by the presence or absence of a plug in the 3.5mm mini jack. When present, AUD-Analog is selected, when absent, AUD-Embedded is selected. AUD-Embedded—HDMI audio is selected. AUD-Ex-Analog—Analog audio is selected.	Auto
Volume	Sets the audio output volume (0–70). <b>Note:</b> Not applicable when digital audio is selected.	50
Audio Balance	Sets the audio output channel balance (0–100). <b>Note:</b> Not applicable when digital audio is selected.	50
Audio Bass	Sets the audio output bass level (0–15). <b>Note:</b> Not applicable when digital audio is selected.	7
Audio Treble	Sets the audio output treble level (0–15). <b>Note:</b> Not applicable when digital audio is selected.	7
Audio Mute	MUTE—Mutes the audio input. Non-MUTE—Unmutes the audio input. <b>Note:</b> Not applicable when digital audio is selected.	Non-MUTE

The **Controller and Test** card configuration table appears as follows when configured as an output card:

Controller and Test Card		
Parameter	Description	Default
Reset Output	Re-power—Power cycles the port. Factory default—Performs a factory reset to default values of the port.	Re-power
HDMI	Sets the output signal format (Display, HDMI, DVI). Display—the output is set automatically based on the EDID of the connected display. HDMI—Force the output to be HDMI. DVI—Force the output to be DVI. <b>Note:</b> When selecting the DVI option and fast switching is enabled, you must ensure that the source is DVI compatible.	Display
Switch Speed	When switching between different sources the switching time can be reduced by setting the fast switch level (Ex-fast Switch, Fast Switch or Normal Switch).	Normal Switch
Audio Mute	MUTE—Mutes the audio input. Non-MUTE—Unmutes the audio input.	Non-MUTE
Volume	Sets the audio output volume (0–70).	50
Audio Balance	Sets the audio output channel balance (0–100).	50
Audio Bass	Sets the audio output bass level (0–15).	7
Audio Treble	Sets the audio output treble level (0–15).	7
Audio Mono	OFF— Analog output is stereo. MIX— Analog output is mono.	OFF

## Setting the Resolution of the Generated Video

The video generator produces a range of both PC and HD resolutions which are selected by a combination of DIP-switches and an on-board jumper (labeled **B3**). Install the jumper to select HD resolutions or remove the jumper to select PC resolutions.

The Resolution DIP-switch is used to set the resolution of the generated video:

Available PC Resolutions for Generated Video (Jumper Off)		
DIP-switch Position		Resolution
1	2	
OFF	OFF	1024 x 768 @60Hz
ON	OFF	1280 x 1024 @60Hz
OFF	ON	1600 x 1200 @60Hz
ON	ON	1920 x 1200 @60Hz

Available HD Resolutions for Generated Video (Jumper On, Default)		
DIP-switch Position		Resolution
1	2	
OFF	OFF	480p (default)
ON	OFF	720p
OFF	ON	1080i
ON	ON	1080p

[Figure 14](#) shows the Resolution DIP-switch with both switches off (up, default, 480p).



Figure 14: Resolution DIP-switch

---

## Setting the Pattern of the Generated Video

The Pattern button is used to set the pattern of generated video. There are 32 available patterns. Press the button repeatedly to cycle through the patterns.

---

## Installing the Test Module

By default, the controller and test card is installed in the configuration. If you uninstalled the test module in the configuration, it must be reinstalled before it can be used, that is, the number of configured inputs and outputs must be increased by one. For example:

- If your **VS-6464DN-EM** has eight inputs and eight outputs, you must configure the **VS-6464DN-EM** as 9 x 9
- If your **VS-6464DN-EM** has 64 inputs and 64 outputs, you must configure the **VS-6464DN-EM** as 65 x 65

### To install the test module in the configuration:

1. Press ESC, ENT and LOCK together.

The following is displayed:

```
Configuration Device
```

2. Press ENT.

The following is displayed:

```
Test Board: 0 MaxInput:64 MaxOutput:64
```

where 0 indicates that the test module is not installed.

3. Using the numeric keys, press 1 to indicate that the test module is installed.  
The TAKE button flashes.
4. Press TAKE.
5. Increase the number of configured inputs and outputs by one (see [Configuring the Number of Installed Input and Output Ports](#) on page 32).
6. Power cycle the device.  
The test module is now installed and may be used.

## Troubleshooting Video Problems

The test module may be used in various ways to isolate video problems.

The following examples are based on the video signal paths shown in [Figure 15](#) and a VS-6464DN-EM device installed as follows:

- 64 inputs and 64 outputs.
- The test module is configured (see [Installing the Test Module](#) on page [45](#)).
- 65 configured inputs and 65 configured outputs (see [Configuring the Number of Installed Input and Output Ports](#) on page [32](#)).

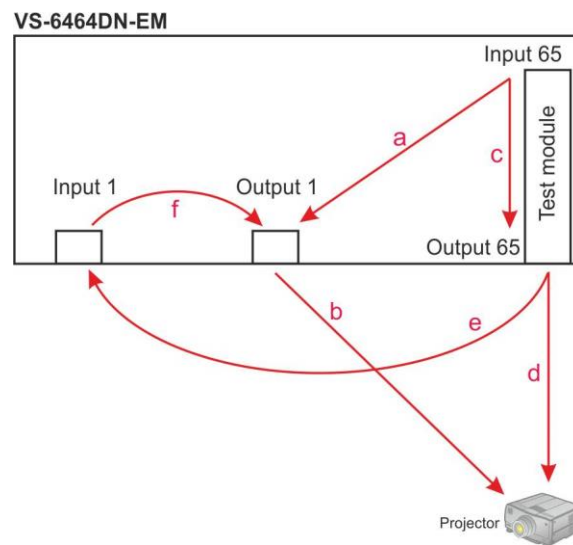


Figure 15: Signal Paths for Isolating Video Problems

### Testing the Projector Output

Signal path: c to d; d to projector.

#### To test the projector output:

1. Configure Input 65 to Output 65 (see [Switching Actions](#) on page [19](#)).
2. Connect Output 65 to the projector.
3. Set the generated video resolution (see [Setting the Resolution of the Generated Video](#) on page [44](#)).
4. Set the pattern for the generated video (see [Section 10.3](#)).
5. Verify that the projector output is as expected.

### Testing the Output Signal Path to the Projector

Signal path: a to b; b to projector

#### To test the output signal path to the projector:

1. Configure Input 65 to Output 1 (see [Switching Actions](#) on page [19](#)).
2. Connect Output 1 to the projector.



3. Set the generated video resolution (see [Setting the Resolution of the Generated Video](#) on page [44](#)).
4. Set the pattern for the generated video (see [Setting the Pattern of the Generated Video](#) on page [45](#)).
5. Verify that the projector output is as expected.

## Testing the Input and Output Signal Path to the Projector

Signal path: c to e; e to f; f to b; b to projector.

### To test the input and output signal path to the projector:

1. Configure Input 65 to Output 65 (see [Switching Actions](#) on page [19](#)).
2. Connect Output 65 to Input 1.
3. Configure Input 1 to Output 1.
4. Connect Output 1 to the projector.
5. Set the generated video resolution (see [Setting the Resolution of the Generated Video](#) on page [44](#)).
6. Set the pattern for the generated video (see [Section 10.3](#)).
7. Verify that the projector output is as expected.

---

## Troubleshooting Audio Problems

The test module may be used in various ways to isolate analog audio problems.

The following examples are based on the audio signal paths shown in [Figure 16](#) and a **VS-6464DN-EM** device installed as follows:

- 64 inputs and 64 outputs.
- The test module is configured (see [Installing the Test Module](#) on page [45](#)).
- 65 configured inputs and 65 configured outputs (see [Configuring the Number of Installed Input and Output Ports](#) on page [32](#)).

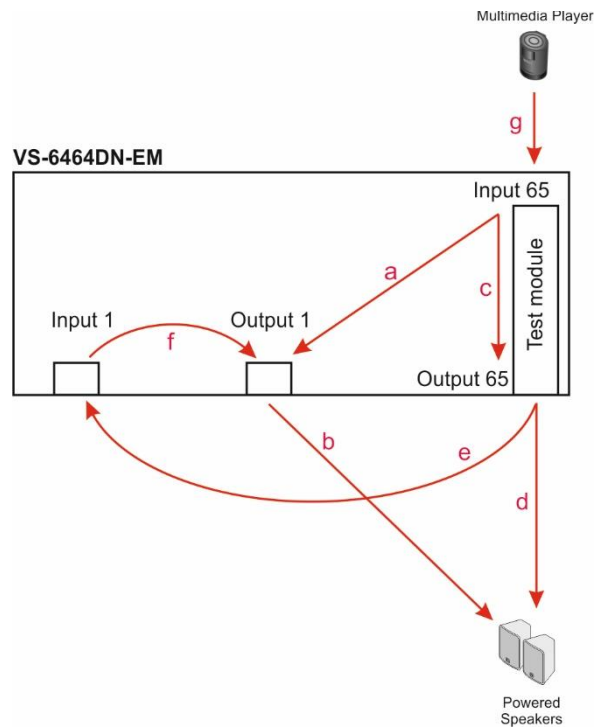


Figure 16: Signal Paths for Isolating Audio Problems

## Testing the Audio Output

Signal path: g to c; c to d; d to an audio acceptor (for example, powered speakers).

### To test the audio output:

1. Connect an analog audio source to Input 65.
2. Configure Input 65 to Output 65 (see [Switching Actions](#) on page 19).
3. Connect Output 65 to the audio acceptor.
4. Verify that the audio output is as expected.

## Testing the Output Signal Path to the Audio Output

Signal path: g to a; a to b; b to an audio acceptor (for example, powered speakers)

### To test the output signal path to the audio output:

1. Connect an analog audio source to Input 65.
2. Configure Input 65 to Output 1 (see [Switching Actions](#) on page 19).
3. Connect Output 1 to the audio acceptor.
4. Verify that the audio output is as expected.

## Testing the Input and Output Signal Path to the Audio Output

Signal path: g to c; c to e; e to f; f to b; b to an audio acceptor (for example, powered speakers)

### To test the input and output signal path to the audio output:

1. Connect an analog audio source to Input 65.
2. Configure Input 65 to Output 65 (see [Switching Actions](#) on page [19](#)).
3. Connect Output 65 to Input 1.
4. Configure Input 1 to Output 1.
5. Connect Output 1 to the audio acceptor.
6. Verify that the audio output is as expected.

# Input / Output Card Hardware Installation Instructions

The VS-6464DN-EM input / output cards mount in one of the 16 slots on the rear of the VS-6464DN-EM chassis. Slots are numbered from left to right (The process for inserting cards is the same for all cards / chassis and the figures below are for illustration purposes only.)



An input card must only be mounted in a slot designated for input cards (slots IN 1 to 32 and IN 33 to 64) and an output card must only be mounted in a slot designated for output cards (slots OUT 1 to 32 and OUT 33 to 64).

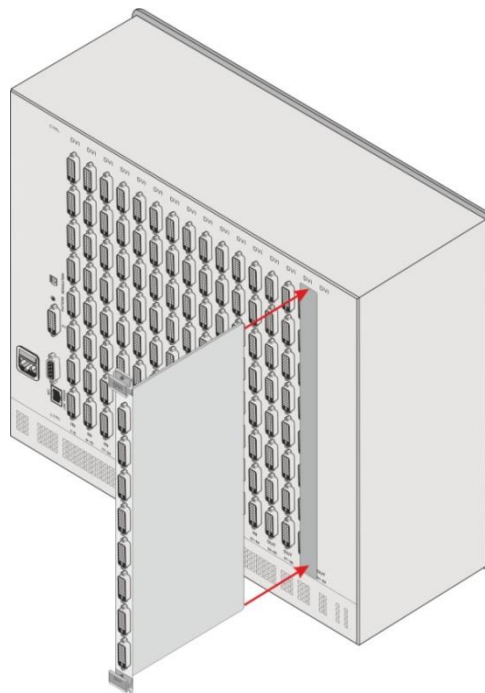


Figure 17: Inserting the Card into a Slot

**To install an input / output card as shown in [Figure 17](#):**

1. Power off the VS-6464DN-EM and all devices connected to it.
2. Using a Phillips screwdriver, loosen the screws at the top and bottom of the blanking plate (see [Figure 18](#)).

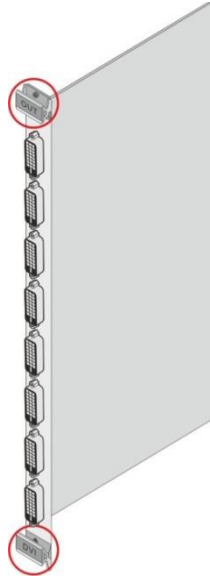


Figure 18: Card Handles

3. Remove the blanking plate from the slot and store it for possible future use.
4. Remove the new card from its shipping box and anti-ESD bag.
5. Holding the card by the lower handle, align the card with the plastic guide rails.
6. Slide the card into the chassis until the front of the card makes contact with the connector inside the chassis.
7. Press the card firmly into the slot until the connector plate is flush with the rear panel of the chassis and the connector is fully seated.
8. Using a Phillips screwdriver, tighten the retaining screws at the top and bottom of the card to secure it to the chassis.
9. Power on the **VS-6464DN-EM** and follow the procedure to configure the new card (see [Configuring the Number of Installed Input and Output Ports](#) on page 32).
10. Power on the peripheral devices.

# Installing a PS-1DN Power Supply

The **VS-6464DN-EM** is equipped with two **PS-1DN** power supply units and includes an optional redundant power supply for mission critical installations. When three power supplies are installed, the **VS-6464DN-EM** distributes the load between the power supplies. Kramer recommends using three power supply units for extending power supply life-span.



The device must have at least two working power supplies to operate correctly.

The **PS-1DN** is a hot-swappable power supply. It is not necessary to power down the chassis in order to install or replace a third power supply.



When installing/replacing a power supply, all normal static discharge precaution measures must be observed to prevent damage to the equipment.

For detailed instructions on installing/replacing a power supply in your **VS-6464DN-EM**, see the **PS-1DN** Power Supply Installation Instructions, available at [www.kramerav.com](http://www.kramerav.com).

The following table describes the behavior of the PS-1 / PS-2 LEDs:

Event	Green POWER LED	Red ERROR LED
Device power on	Lights and remains on	Lights for a few seconds and turns off
Device power off	Remains on for ~20 seconds and then turns off	Lights for ~20 seconds and then turns off

If no LEDs light, verify the following:

- The power supply connector at the rear of the device is connected to the mains power supply (see [Defining the VS-6464DN-EM 8x8 to 64x64 Modular Multi-Format Managed Digital Matrix Switcher](#) on page 6).
- The power switch is switched to the On position.
- The power supply is seated firmly in place – the front panel of the power supply is flush with the front panel of the chassis and the screws are tightly fastened.

If the problem persists, or if the red ERROR LED is always lit, contact Kramer technical support.

# Upgrading VS-6464DN-EM and Input / Output Card Firmware

The **VS-6464DN-EM** enables upgrading both the device's firmware and that of the **VGAA-IN8/OUT8-F64** card. Upgrading the firmware of the remaining input / output cards can only be done by authorized service personnel.

The device and card firmware can be upgraded using:

- K-Upload via RS-232, USB (VCOM), or Ethernet (see [Upgrading Firmware Using K-Upload](#) on page 53).
- Kramer Network via Ethernet (see [Upgrading Firmware Using Kramer Network](#) on page 54).

---

## Upgrading Firmware Using K-Upload

The **VS-6464DN-EM** enables upgrading device and card firmware via RS-232, USB (VCOM) or Ethernet using the K-Upload software application, available at [www.kramerav.com/product/VS-6464DN-EM](http://www.kramerav.com/product/VS-6464DN-EM). For instructions on upgrading the firmware using K-Upload, see the *K-Upload User Manual*.

For information on connecting to the **VS-6464DN-EM** via RS-232, USB (VCOM), or Ethernet, see [Connecting to the VS-6464DN-EM via RS-232](#) on page 14, [Connecting to the VS-6464DN-EM via USB \(VCOM\)](#) on page 14, or [Connecting to the VS-6464DN-EM via Ethernet](#) on page 14, respectively.

Firmware may be available for any of the following components:



The firmware files for each component have different suffixes to help with identification.

- **VS-6464DN-EM Control Module** – Control module firmware files end with `_0`, for example:  
`linux163264_[APP_X_xx.xx_xxxx]_0`
- **VS-6464DN-EM Test Module** – Test module firmware files end with `_200`, for example:  
`64testCard_[OUT8_47_xx.xx_xxxx]_200`
- **VS-6464DN-EM Keypad** – Keypad firmware files end with `_201`, for example:  
`VS-163264Keypad_[APP_X_xx.xx_xxxx]_201`
- **VGAA-IN8/OUT8-F64 Card** – The suffix of card firmware files must be modified before use. Input and output card firmware files all end with `_N`, for example:  
`VGA VGAA_[OUT8_16&18_xx.xx_xxxx]_N`  
 This suffix must be changed according to the slot number in which the card is installed (1-16). For example if the card is installed in slot 7, the firmware file's suffix must be changed to `_7`:  
`VGA VGAA_[OUT8_16&18_xx.xx_xxxx]_7`



Go to [www.kramerav.com/downloads/VS-6464DN-EM](http://www.kramerav.com/downloads/VS-6464DN-EM) to check for up-to-date user manuals, application programs, and to check if firmware upgrades are available (where appropriate).

If necessary, you can downgrade the input/output card firmware by incrementing the previous firmware file's number to higher than the currently installed firmware. For example if you upgraded the card's firmware using the `VGA_VGAA_[OUT8_16&18_01.00_0006]_7` file, to downgrade to the previously installed firmware, rename the previously installed firmware file to `VGA_VGAA_[OUT8_16&18_01.00_0007]_7`.

---

## Upgrading Firmware Using Kramer Network

The **VS-6464DN-EM** enables upgrading device and card firmware via Ethernet using the Kramer Network enterprise management platform, available at [www.kramerav.com/product/VS-6464DN-EM](http://www.kramerav.com/product/VS-6464DN-EM). For instructions on upgrading the firmware using Kramer Network, see the *Kramer Network User Manual*.

For information on connecting to the **VS-6464DN-EM** via Ethernet, see [Connecting to the VS-6464DN-EM via Ethernet](#) on page [14](#).



# Technical Specifications

## VS-6464DN-EM Chassis

PORTS:	1 DVI-D on a DVI Molex 24-pin (F) connector 2 unbalanced analog audio on 3.5mm mini jack connectors 1 RS-232 on an 9-pin D-sub port 1 USB (VCOM) port on a USB Mini-B connector 1 Ethernet on an RJ-45 connector
BANDWIDTH:	Supports up to 3.4Gbps bandwidth per channel (limited by the card installed)
CONTROLS:	Front panel buttons, RS-232, Ethernet, USB (virtual COM)
SWITCHING:	Confirm or At Once for immediate switching
POWER CONSUMPTION:	100-240V AC, 50/60Hz, 4.7A
OPERATING TEMPERATURE:	0° to +40°C (32° to 104°F)
STORAGE TEMPERATURE:	-40° to +70°C (-40° to 158°F)
HUMIDITY:	10% to 90%, RHL non-condensing
COOLING:	Forced air, fan
ENCLOSURE TYPE:	Aluminum
RACK MOUNT:	With supplied rack ears, attached
DIMENSIONS:	19" 10U (48.3cm x 36cm x 44cm W, D, H)
PRODUCT WEIGHT:	24kg (52.9lbs) approx.
SHIPPING WEIGHT:	25.8kg (56.9lbs) approx.
VIBRATION:	ISTA 1A in carton (International Safe Transit Association)
SAFETY REGULATORY COMPLIANCE:	CE
ENVIRONMENTAL REGULATORY COMPLIANCE:	Complies with appropriate requirements of RoHs and WEEE
INCLUDED ACCESSORIES:	Power cord.
Specifications are subject to change without notice at <a href="http://www.kramerav.com">www.kramerav.com</a>	

## Quick VS-6464DN-EM Card Comparison

Card	Ports	BW per Channel	Max. Range	Compliance	3D Pass Thru
HDCP	8 DVI-D on a DVI Molex 24-pin (F) connector	2.25Gbps	15m (49ft)	HDCP, HDMI	Yes
DGKat	8 TP DGKat on RJ-45 8 Serial on 3-pin terminal blocks	Vid: 1.65Gbps Serial: 19200	90m (300ft) – 1080p @60Hz*	HDCP 1.4	Yes
F670	8 SC	2.25Gbps	1700m (5570ft) – 1080p/60Hz	HDCP 1.4	Yes
F610	8 4 LC	1.65Gbps	400m (1310ft) using MM OM2 fiber	DVI 1.0	No
DVI	8 DVI-D on DVI Molex 24-pin (F) connectors	1.65Gbps	15m (49ft)	DVI 1.0	No

Card	Ports	BW per Channel	Max. Range	Compliance	3D Pass Thru
VGAA	8 VGA on 15-pin HD connectors 8 unbalanced analog audio on 3.5mm mini jack connectors**	450MHz	10m (32ft)	-	-
<p>* When using <b>BC-UNIKAT</b> cables.                      ** Accessible via <b>C-GF/GMAF-30</b> cables.                      Specifications are subject to change without notice at <a href="http://www.kramerav.com">www.kramerav.com</a></p>					

# Default Settings

## Default Communication Parameters

EDID	
EDID data is passed between Output 1 and Input 1	
RS-232 / Protocol 3000	
Baud Rate:	115200
Data Bits:	8
Stop Bits:	1
Parity:	None
Command Format:	HEX
Command Example to Switch Input 4 to Output 2:	#VID 4>2
Ethernet	
IP Address:	192.168.1.39
TCP Port #:	5000
UDP Port#:	50000
Concurrent TCP Connections:	32

## Factory Default EDID

### HDCP-IN8-F64 / HDCP-OUT8-F64

```

Monitor
Model name..... VS-64HDCP
Manufacturer..... KMR
Plug and Play ID..... KMR0200
Serial number..... 1
Manufacture date..... 2014, ISO week 19
Filter driver..... None
-----
EDID revision..... 1.3
Input signal type..... Digital (HDMI-a)
Color bit depth..... Undefined
Display type..... RGB color
Screen size..... 700 x 390 mm (31.5 in)
Power management..... Not supported
Extension blocs..... 1 (CEA-EXT)
-----
DDC/CI..... Not supported
Color characteristics
Default color space..... Non-sRGB
Display gamma..... 2.20
Red chromaticity..... Rx 0.640 - Ry 0.341
Green chromaticity..... Gx 0.286 - Gy 0.610
Blue chromaticity..... Bx 0.146 - By 0.069
White point (default)... Wx 0.284 - Wy 0.293
Additional descriptors... None
Timing characteristics
Horizontal scan range... 31-94kHz
Vertical scan range..... 50-85Hz
Video bandwidth..... 170MHz
CVT standard..... Not supported
GTF standard..... Not supported
Additional descriptors... None
Preferred timing..... Yes
Native/preferred timing.. 1280x720p at 60Hz
Modeline..... "1280x720" 74.250 1280 1390 1430 1650 720 725 730 750 +hsync +vsync
Detailed timing #1..... 1920x1080p at 60Hz (16:9)
Modeline..... "1920x1080" 148.500 1920 2008 2052 2200 1080 1084 1089 1125 +hsync +vsync
Standard timings supported
720 x 400p at 70Hz - IBM VGA
720 x 400p at 88Hz - IBM XGA2
640 x 480p at 60Hz - IBM VGA
640 x 480p at 67Hz - Apple Mac II
640 x 480p at 72Hz - VESA
640 x 480p at 75Hz - VESA
800 x 600p at 56Hz - VESA
800 x 600p at 60Hz - VESA
800 x 600p at 72Hz - VESA
800 x 600p at 75Hz - VESA
832 x 624p at 75Hz - Apple Mac II
1024 x 768i at 87Hz - IBM
1024 x 768p at 60Hz - VESA
1024 x 768p at 70Hz - VESA

```

1024 x 768p at 75Hz - VESA  
 1280 x 1024p at 75Hz - VESA  
 1152 x 870p at 75Hz - Apple Mac II  
 1280 x 720p at 60Hz - VESA STD  
 1280 x 800p at 60Hz - VESA STD  
 1440 x 900p at 60Hz - VESA STD  
 1280 x 960p at 60Hz - VESA STD  
 1280 x 1024p at 60Hz - VESA STD  
 1400 x 1050p at 60Hz - VESA STD  
 1680 x 1050p at 60Hz - VESA STD  
 1600 x 1200p at 60Hz - VESA STD  
 EIA/CEA-861 Information  
 Revision number..... 3  
 IT underscan..... Not supported  
 Basic audio..... Supported  
 YCbCr 4:4:4..... Supported  
 YCbCr 4:2:2..... Supported  
 Native formats..... 1  
 Detailed timing #1..... 720x480p at 60Hz (4:3)  
   Modeline..... "720x480" 27.000 720 736 798 858 480 489 495 525 -hsync -vsync  
 Detailed timing #2..... 1920x1080i at 60Hz (16:9)  
   Modeline..... "1920x1080i" 74.250 1920 2008 2052 2200 1080 1084 1094 1124 interlace +hsync +vsync  
 Detailed timing #3..... 1920x1080i at 50Hz (16:9)  
   Modeline..... "1920x1080i" 74.250 1920 2448 2492 2640 1080 1084 1094 1124 interlace +hsync +vsync  
 Detailed timing #4..... 1280x720p at 60Hz (16:9)  
   Modeline..... "1280x720" 74.250 1280 1390 1430 1650 720 725 730 750 +hsync +vsync  
 Detailed timing #5..... 1280x720p at 50Hz (16:9)  
   Modeline..... "1280x720" 74.250 1280 1720 1760 1980 720 725 730 750 +hsync +vsync  
 CE video identifiers (VICs) - timing/formats supported  
   720 x 576p at 50Hz - EDTV (4:3, 16:15)  
   1280 x 720p at 50Hz - HDTV (16:9, 1:1)  
   1920 x 1080i at 60Hz - HDTV (16:9, 1:1)  
   1920 x 1080i at 50Hz - HDTV (16:9, 1:1)  
   1280 x 720p at 60Hz - HDTV (16:9, 1:1) [Native]  
   1920 x 1080p at 60Hz - HDTV (16:9, 1:1)  
   1920 x 1080p at 50Hz - HDTV (16:9, 1:1)  
 NB: NTSC refresh rate = (Hz\*1000)/1001  
 CE audio data (formats supported)  
   LPCM 3-channel, 24-bits at 44/48 kHz  
 CE speaker allocation data  
   Channel configuration.... 3.0  
   Front left/right..... Yes  
   Front LFE..... No  
   Front center..... Yes  
   Rear left/right..... No  
   Rear center..... No  
   Front left/right center.. No  
   Rear left/right center... No  
   Rear LFE..... No  
 CE vendor specific data (VSDB)  
   IEEE registration number. 0x000C03  
   CEC physical address..... 1.0.0.0  
   Maximum TMDS clock..... 165MHz  
 Report information  
   Date generated..... 12/08/2015  
   Software revision..... 2.70.0.989  
   Data source..... Real-time 0x0071  
   Operating system..... 6.1.7601.2.Service Pack 1  
 Raw data  
 00,FF,FF,FF,FF,FF,00,2D,B2,00,02,01,00,00,00,13,18,01,03,82,46,27,78,0A,D5,7C,A3,57,49,9C,25,  
 11,48,4B,FF,FF,80,81,C0,81,00,95,00,81,40,81,80,90,40,B3,00,A9,40,01,1D,00,72,51,D0,1E,20,6E,28,  
 55,00,7E,88,42,00,00,1E,02,3A,80,18,71,38,2D,40,58,2C,45,00,C4,8E,21,00,00,1E,00,00,00,FC,00,56,  
 53,2D,36,34,48,44,43,50,0A,20,20,20,00,00,00,FD,00,32,55,1F,5E,11,00,0A,20,20,20,20,01,62,  
 02,03,1A,71,47,11,13,05,14,84,10,1F,23,0A,06,04,83,05,00,00,65,03,0C,00,10,00,8C,0A,D0,8A,20,E0,  
 2D,10,10,3E,96,00,58,C2,21,00,00,18,01,1D,80,18,71,1C,16,20,58,2C,25,00,C4,8E,21,00,00,9E,01,1D,  
 80,D0,72,1C,16,20,10,2C,25,80,C4,8E,21,00,00,9E,01,1D,00,72,51,D0,1E,20,6E,28,55,00,C4,8E,21,00,  
 00,1E,01,1D,00,BC,52,D0,1E,20,B8,28,55,40,C4,8E,21,00,00,1E,00,00,00,00,00,00,00,00,00,00,90

## DGKat-IN8-F64 / DGKat-OUT8-F64

Monitor  
 Model name..... VS-64HDGKat  
 Manufacturer..... KMR  
 Plug and Play ID..... KMR0200  
 Serial number..... 1  
 Manufacture date..... 2014, ISO week 19  
 Filter driver..... None  
 -----  
 EDID revision..... 1.3  
 Input signal type..... Digital (DVI)  
 Color bit depth..... Undefined  
 Display type..... RGB color  
 Screen size..... 700 x 390 mm (31.5 in)  
 Power management..... Not supported  
 Extension blocs..... 1 (CEA-EXT)  
 -----  
 DDC/CI..... Not supported  
 Color characteristics  
   Default color space..... Non-sRGB  
   Display gamma..... 2.20  
   Red chromaticity..... Rx 0.640 - Ry 0.341  
   Green chromaticity..... Gx 0.286 - Gy 0.610  
   Blue chromaticity..... Bx 0.146 - By 0.069  
   White point (default)... Wx 0.284 - Wy 0.293  
   Additional descriptors... None  
 Timing characteristics  
   Horizontal scan range.... 31-94kHz  
   Vertical scan range..... 50-85Hz  
   Video bandwidth..... 170MHz  
   CVT standard..... Not supported  
   GTF standard..... Not supported  
   Additional descriptors... None  
   Preferred timing..... Yes  
   Native/preferred timing.. 1280x720p at 60Hz

Modeline..... "1280x720" 74.250 1280 1390 1430 1650 720 725 730 750 +hsync +vsync  
Detailed timing #1..... 1920x1080p at 60Hz (16:9)  
Modeline..... "1920x1080" 148.500 1920 2008 2052 2200 1080 1084 1089 1125 +hsync +vsync  
Standard timings supported  
720 x 400p at 70Hz - IBM VGA  
720 x 400p at 88Hz - IBM XGA2  
640 x 480p at 60Hz - IBM VGA  
640 x 480p at 67Hz - Apple Mac II  
640 x 480p at 72Hz - VESA  
640 x 480p at 75Hz - VESA  
800 x 600p at 56Hz - VESA  
800 x 600p at 60Hz - VESA  
800 x 600p at 72Hz - VESA  
800 x 600p at 75Hz - VESA  
832 x 624p at 75Hz - Apple Mac II  
1024 x 768i at 87Hz - IBM  
1024 x 768p at 60Hz - VESA  
1024 x 768p at 70Hz - VESA  
1024 x 768p at 75Hz - VESA  
1280 x 1024p at 75Hz - VESA  
1152 x 870p at 75Hz - Apple Mac II  
1280 x 720p at 60Hz - VESA STD  
1280 x 800p at 60Hz - VESA STD  
1440 x 900p at 60Hz - VESA STD  
1280 x 960p at 60Hz - VESA STD  
1280 x 1024p at 60Hz - VESA STD  
1400 x 1050p at 60Hz - VESA STD  
1680 x 1050p at 60Hz - VESA STD  
1600 x 1200p at 60Hz - VESA STD  
EIA/CEA-861 Information  
Revision number..... 3  
IT underscan..... Not supported  
Basic audio..... Supported  
YCbCr 4:4:4..... Not supported  
YCbCr 4:2:2..... Not supported  
Native formats..... 1  
Detailed timing #1..... 720x480p at 60Hz (4:3)  
Modeline..... "720x480" 27.000 720 736 798 858 480 489 495 525 -hsync -vsync  
Detailed timing #2..... 1920x1080i at 60Hz (16:9)  
Modeline..... "1920x1080i" 74.250 1920 2008 2052 2200 1080 1084 1094 1124 interlace +hsync +vsync  
Detailed timing #3..... 1920x1080i at 50Hz (16:9)  
Modeline..... "1920x1080i" 74.250 1920 2048 2492 2640 1080 1084 1094 1124 interlace +hsync +vsync  
Detailed timing #4..... 1280x720p at 60Hz (16:9)  
Modeline..... "1280x720" 74.250 1280 1390 1430 1650 720 725 730 750 +hsync +vsync  
Detailed timing #5..... 1280x720p at 50Hz (16:9)  
Modeline..... "1280x720" 74.250 1280 1720 1760 1980 720 725 730 750 +hsync +vsync  
CE video identifiers (VICs) - timing/formats supported  
720 x 576p at 50Hz - EDTV (4:3, 16:15)  
1280 x 720p at 50Hz - HDTV (16:9, 1:1)  
1920 x 1080i at 60Hz - HDTV (16:9, 1:1)  
1920 x 1080i at 50Hz - HDTV (16:9, 1:1)  
1280 x 720p at 60Hz - HDTV (16:9, 1:1) [Native]  
1920 x 1080p at 60Hz - HDTV (16:9, 1:1)  
1920 x 1080p at 50Hz - HDTV (16:9, 1:1)  
NB: NTSC refresh rate = (Hz\*1000)/1001  
CE audio data (formats supported)  
LPCM 3-channel, 24-bits at 44/48 kHz  
CE speaker allocation data  
Channel configuration.... 3.0  
Front left/right..... Yes  
Front LFE..... No  
Front center..... Yes  
Rear left/right..... No  
Rear center..... No  
Front left/right center.. No  
Rear left/right center... No  
Rear LFE..... No  
CE vendor specific data (VSDB)  
IEEE registration number. 0x000C03  
CEC physical address..... 1.0.0.0  
Maximum TMDS clock..... 165MHz  
Report information  
Date generated..... 27/05/2015  
Software revision..... 2.90.0.1000  
Data source..... Real-time 0x0061  
Operating system..... 6.1.7601.2.Service Pack 1  
Raw data  
00,FF,FF,FF,FF,FF,FF,00,2D,B2,00,02,01,00,00,00,13,18,01,03,81,46,27,78,0A,D5,7C,A3,57,49,9C,25,  
11,48,4B,FF,FF,80,81,C0,81,00,95,00,81,40,81,80,90,40,B3,00,A9,40,01,1D,00,72,51,D0,1E,20,6E,28,  
55,00,7E,88,42,00,00,1E,02,3A,80,18,71,38,2D,40,58,2C,45,00,C4,8E,21,00,00,1E,00,00,00,FC,00,56,  
53,2D,36,34,48,44,47,4B,61,74,0A,20,00,00,00,FD,00,32,55,1F,5E,11,00,0A,20,20,20,20,20,01,CF,  
02,03,1A,41,47,11,13,05,14,84,10,1F,23,0A,06,04,83,05,00,00,65,03,0C,00,10,00,8C,0A,D0,8A,20,E0,  
2D,10,10,3E,96,00,58,C2,21,00,00,18,01,1D,80,18,71,1C,16,20,58,2C,25,00,C4,8E,21,00,00,9E,01,1D,  
80,D0,72,1C,16,20,10,2C,25,80,C4,8E,21,00,00,9E,01,1D,00,72,51,D0,1E,20,6E,28,55,00,C4,8E,21,00,  
00,1E,01,1D,00,BC,52,D0,1E,20,B8,28,55,40,C4,8E,21,00,00,1E,00,00,00,00,00,00,00,00,00,00,C0

## F670-IN8-F64 / F670-OUT8-F64

Monitor  
Model name..... VS-64F670  
Manufacturer..... KMR  
Plug and Play ID..... KMR0200  
Serial number..... 1  
Manufacture date..... 2014, ISO week 19  
Filter driver..... None  
-----  
EDID revision..... 1.3  
Input signal type..... Digital (HDMI-a)  
Color bit depth..... Undefined  
Display type..... RGB color  
Screen size..... 700 x 390 mm (31.5 in)  
Power management..... Not supported  
Extension blocs..... 1 (CEA-EXT)  
-----

DDC/CI..... Not supported

Color characteristics

Default color space..... Non-sRGB

Display gamma..... 2.20

Red chromaticity..... Rx 0.640 - Ry 0.341

Green chromaticity..... Gx 0.286 - Gy 0.610

Blue chromaticity..... Bx 0.146 - By 0.069

White point (default)... Wx 0.284 - Wy 0.293

Additional descriptors... None

Timing characteristics

Horizontal scan range.... 31-94kHz

Vertical scan range..... 50-85Hz

Video bandwidth..... 170MHz

CVT standard..... Not supported

GTF standard..... Not supported

Additional descriptors... None

Preferred timing..... Yes

Native/preferred timing.. 1280x720p at 60Hz

Modeline..... "1280x720" 74.250 1280 1390 1430 1650 720 725 730 750 +hsync +vsync

Detailed timing #1..... 1920x1080p at 60Hz (16:9)

Modeline..... "1920x1080" 148.500 1920 2008 2052 2200 1080 1084 1089 1125 +hsync +vsync

Standard timings supported

720 x 400p at 70Hz - IBM VGA

720 x 400p at 88Hz - IBM XGA2

640 x 480p at 60Hz - IBM VGA

640 x 480p at 67Hz - Apple Mac II

640 x 480p at 72Hz - VESA

640 x 480p at 75Hz - VESA

800 x 600p at 56Hz - VESA

800 x 600p at 60Hz - VESA

800 x 600p at 72Hz - VESA

800 x 600p at 75Hz - VESA

832 x 624p at 75Hz - Apple Mac II

1024 x 768i at 87Hz - IBM

1024 x 768p at 60Hz - VESA

1024 x 768p at 70Hz - VESA

1024 x 768p at 75Hz - VESA

1280 x 1024p at 75Hz - VESA

1152 x 870p at 75Hz - Apple Mac II

1280 x 720p at 60Hz - VESA STD

1280 x 800p at 60Hz - VESA STD

1440 x 900p at 60Hz - VESA STD

1280 x 960p at 60Hz - VESA STD

1280 x 1024p at 60Hz - VESA STD

1400 x 1050p at 60Hz - VESA STD

1680 x 1050p at 60Hz - VESA STD

1600 x 1200p at 60Hz - VESA STD

EIA/CEA-861 Information

Revision number..... 3

IT underscan..... Not supported

Basic audio..... Supported

YCbCr 4:4:4..... Supported

YCbCr 4:2:2..... Supported

Native formats..... 1

Detailed timing #1..... 720x480p at 60Hz (4:3)

Modeline..... "720x480" 27.000 720 736 798 858 480 489 495 525 -hsync -vsync

Detailed timing #2..... 1920x1080i at 60Hz (16:9)

Modeline..... "1920x1080i" 74.250 1920 2008 2052 2200 1080 1084 1094 1124 interlace +hsync +vsync

Detailed timing #3..... 1920x1080i at 50Hz (16:9)

Modeline..... "1920x1080i" 74.250 1920 2448 2492 2640 1080 1084 1094 1124 interlace +hsync +vsync

Detailed timing #4..... 1280x720p at 60Hz (16:9)

Modeline..... "1280x720" 74.250 1280 1390 1430 1650 720 725 730 750 +hsync +vsync

Detailed timing #5..... 1280x720p at 50Hz (16:9)

Modeline..... "1280x720" 74.250 1280 1760 1980 720 725 730 750 +hsync +vsync

CE video identifiers (VICs) - timing/formats supported

720 x 576p at 50Hz - EDTV (4:3, 16:15)

1280 x 720p at 50Hz - HDTV (16:9, 1:1)

1920 x 1080i at 60Hz - HDTV (16:9, 1:1)

1920 x 1080i at 50Hz - HDTV (16:9, 1:1)

1280 x 720p at 60Hz - HDTV (16:9, 1:1) [Native]

1920 x 1080p at 60Hz - HDTV (16:9, 1:1)

1920 x 1080p at 50Hz - HDTV (16:9, 1:1)

NB: NTSC refresh rate = (Hz\*1000)/1001

CE audio data (formats supported)

LPCM 3-channel, 24-bits at 44/48 kHz

CE speaker allocation data

Channel configuration.... 3.0

Front left/right..... Yes

Front LFE..... No

Front center..... Yes

Rear left/right..... No

Rear center..... No

Front left/right center.. No

Rear left/right center... No

Rear LFE..... No

CE vendor specific data (VSDB)

IEEE registration number. 0x000C03

CEC physical address..... 1.0.0.0

Maximum TMDS clock..... 165MHz

Report information

Date generated..... 26/08/2015

Software revision..... 2.70.0.989

Data source..... Real-time 0x0071

Operating system..... 6.1.7601.2.Service Pack 1

Raw data

00,FF,FF,FF,FF,FF,00,2D,B2,00,02,01,00,00,00,13,18,01,03,82,46,27,78,0A,D5,7C,A3,57,49,9C,25,  
11,48,4B,FF,FF,80,81,C0,81,00,95,00,81,40,81,80,90,40,B3,00,A9,40,01,1D,00,72,51,D0,1E,20,6E,28,  
55,00,7E,88,42,00,01,E,02,3A,80,18,71,38,2D,40,58,2C,45,00,C4,8E,21,00,00,1E,00,00,00,FC,00,56,  
53,2D,36,34,46,36,37,30,0A,20,20,20,00,00,00,FD,00,32,55,1F,5E,11,00,0A,20,20,20,20,20,01,9E,  
02,03,1A,71,47,11,13,05,14,84,10,1F,23,0A,06,04,83,05,00,00,65,03,0C,00,10,00,8C,0A,D0,8A,20,E0,  
2D,10,10,3E,96,00,58,C2,21,00,00,18,01,1D,80,18,71,1C,16,20,58,2C,25,00,C4,8E,21,00,00,9E,01,1D,  
80,D0,72,1C,16,20,10,2C,25,80,C4,8E,21,00,00,9E,01,1D,00,72,51,D0,1E,20,6E,28,55,00,C4,8E,21,00,  
00,1E,01,1D,00,BC,52,D0,1E,20,B8,28,55,40,C4,8E,21,00,00,1E,00,00,00,00,00,00,00,00,00,00,00,90

**VGAA-IN8-F64 / VGAA-OUT8-F64**

```

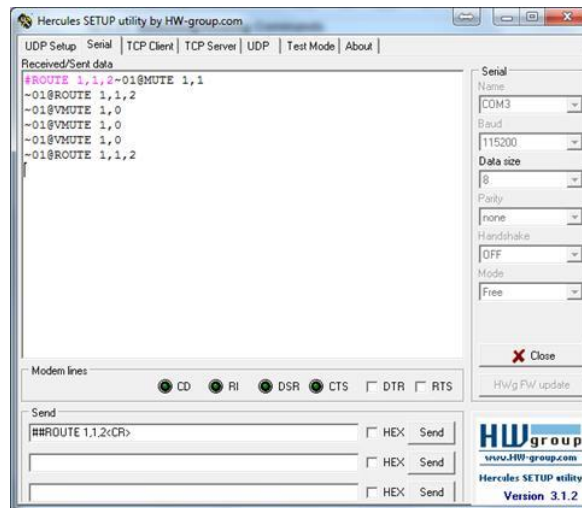
Monitor
Model name..... VS-64VGAA
Manufacturer..... KMR
Plug and Play ID..... KMR03ED
Serial number..... 1
Manufacture date..... 2016, ISO week 20
Filter driver..... None
-----
EDID revision..... 1.3
Input signal type..... Analog 0.700,0.300 (1.0V p-p)
Sync input support..... Not available
Display type..... RGB color
Screen size..... 700 x 390 mm (31.5 in)
Power management..... Not supported
Extension blocs..... None
-----
DDC/CI..... n/a
Color characteristics
Default color space..... Non-sRGB
Display gamma..... 2.20
Red chromaticity..... Rx 0.640 - Ry 0.341
Green chromaticity..... Gx 0.286 - Gy 0.610
Blue chromaticity..... Bx 0.146 - By 0.069
White point (default).... Wx 0.284 - Wy 0.293
Additional descriptors... None
Timing characteristics
Range limits..... Not available
GTF standard..... Supported
Additional descriptors... None
Preferred timing..... Yes
Native/preferred timing.. 640x480p at 60Hz (4:3)
  Modeline..... "640x480" 25.180 640 656 752 800 480 490 492 525 -hsync -vsync
Detailed timing #1..... 1920x1080p at 60Hz (16:9)
  Modeline..... "1920x1080" 148.500 1920 2008 2052 2200 1080 1084 1089 1125 +hsync +vsync
Detailed timing #2..... 1600x1200p at 60Hz (4:3)
  Modeline..... "1600x1200" 162.000 1600 1664 1856 2160 1200 1201 1204 1250 +hsync +vsync
Standard timings supported
720 x 400p at 70Hz - IBM VGA
720 x 400p at 88Hz - IBM XGA2
640 x 480p at 60Hz - IBM VGA
640 x 480p at 67Hz - Apple Mac II
640 x 480p at 72Hz - VESA
640 x 480p at 75Hz - VESA
800 x 600p at 56Hz - VESA
800 x 600p at 60Hz - VESA
800 x 600p at 72Hz - VESA
800 x 600p at 75Hz - VESA
832 x 624p at 75Hz - Apple Mac II
1024 x 768i at 87Hz - IBM
1024 x 768p at 60Hz - VESA
1024 x 768p at 70Hz - VESA
1024 x 768p at 75Hz - VESA
1280 x 1024p at 75Hz - VESA
1152 x 870p at 75Hz - Apple Mac II
640 x 480p at 60Hz - VESA STD
800 x 600p at 60Hz - VESA STD
1024 x 768p at 60Hz - VESA STD
1152 x 864p at 75Hz - VESA STD
1280 x 1024p at 75Hz - VESA STD
1280 x 960p at 60Hz - VESA STD
1280 x 1024p at 60Hz - VESA STD
1360 x 765p at 60Hz - VESA STD
Report information
Date generated..... 07/02/2018
Software revision..... 2.60.0.972
Data source..... File
Operating system..... 6.1.7601.2.Service Pack 1
Raw data
00,FF,FF,FF,FF,FF,00,2D,B2,ED,03,01,00,00,00,14,1A,01,03,00,46,27,78,0B,D5,7C,A3,57,49,9C,25,
11,48,4B,FF,FF,80,31,40,45,40,61,40,71,4F,81,8F,81,40,81,80,8B,C0,D6,09,80,A0,20,E0,2D,10,10,60,
A2,00,04,03,00,00,00,18,02,3A,80,18,71,38,2D,40,58,2C,45,00,10,09,00,00,00,1E,00,00,00,FC,00,56,
53,2D,36,34,56,47,41,41,0A,20,20,20,48,3F,40,30,62,B0,32,40,40,C0,13,00,6F,13,11,00,00,1E,00,CE


```

# Protocol 3000

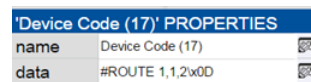
The **VS-6464DN-EM 8x8 to 64x64 Modular Multi-Format Managed Digital Matrix Switcher** can be operated using the Kramer Protocol 3000 serial commands. The command framing varies according to how you interface with the **VS-6464DN-EM**. For example, a basic video input switching command that routes a layer 1 video signal to HDBT out 1 from HDMI input 2 (`ROUTE 1, 1, 2`), is entered as follows:

- Terminal communication software, such as Hercules:

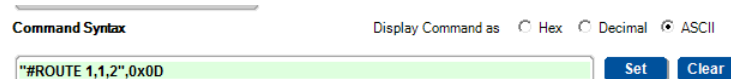



 The framing of the command varies according to the terminal communication software.

- K-Touch Builder (Kramer software):



- K-Config (Kramer configuration software):



 All the examples provided in this section are based on using the K-Config software.

You can enter commands directly using terminal communication software (e.g., Hercules) by connecting a PC to the serial or Ethernet port on the **VS-6464DN-EM**. To enter `CR` press the Enter key (`LF` is also sent but is ignored by the command parser).

Commands sent from various non-Kramer controllers (e.g., Crestron) may require special coding for some characters (such as, `/X##`). For more information, refer to your controller's documentation.



For more information about:

- Understanding Protocol 3000 commands (see [Understanding Protocol 3000 Commands](#) on page [63](#)).
- General syntax used for Protocol 3000 commands (see [Protocol 3000 Syntax](#) on page [64](#)).
- Protocol 3000 commands available for the **VS-6464DN-EM** (see [Protocol 3000 Commands](#) on page [64](#)).
- Using the packet protocol (see [Using the Packet Protocol](#) on page [90](#)).

---

## Understanding Protocol 3000 Commands

Protocol 3000 commands are structured according to the following:

- **Command** – A sequence of ASCII letters (A-Z, a-z and -). A command and its parameters must be separated by at least one space.
- **Parameters** – A sequence of alphanumeric ASCII characters (0-9, A-Z, a-z and some special characters for specific commands). Parameters are separated by commas.
- **Message string** – Every command entered as part of a message string begins with a message starting character and ends with a message closing character.



A string can contain more than one command. Commands are separated by a pipe (|) character. The maximum string length is 64 characters.

- **Message starting character:**
  - # – For host command/query.
  - ~ – For device response.
- **Device address** – K-NET Device ID followed by @ (optional, K-NET only).
- **Query sign** – ? follows some commands to define a query request.
- **Message closing character:**
  - CR – Carriage return for host messages (ASCII 13).
  - CR LF – Carriage return for device messages (ASCII 13) and line-feed (ASCII 10).
- **Command chain separator character** – Multiple commands can be chained in the same string. Each command is delimited by a pipe character (|). When chaining commands, enter the message starting character and the message closing character only at the beginning and end of the string.



Spaces between parameters or command terms are ignored. Commands in the string do not execute until the closing character is entered. A separate response is sent for every command in the chain.

## Protocol 3000 Syntax

The Kramer Protocol 3000 syntax uses the following delimiters:

- **CR** = Carriage return (ASCII 13 = 0x0D).
- **LF** = Line feed (ASCII 10 = 0x0A).
- **SP** = Space (ASCII 32 = 0x20).

Some commands have short name syntax in addition to long name syntax to enable faster typing. The response is always in long syntax.

The Protocol 3000 syntax is in the following format:

- **Host Message Format:**

Start	Address (optional)	Body	Delimiter
#	<i>device_id@</i>	<b>Message</b>	<b>CR</b>

- **Simple Command** – Command string with only one command without addressing:

Start	Address (optional)	Body	Delimiter
#	<i>device_id@</i>	<b>Message</b>	<b>CR</b>

- **Command String** – Formal syntax with commands concatenation and addressing:

Start	Body	Delimiter
#	<b>Command</b> <b>SP</b> <i>Parameter_1,Parameter_2,...</i>	<b>CR</b>

- **Device Message Format:**

Start	Address (optional)	Body	Delimiter
~	<i>device_id@</i>	<b>Message</b>	<b>CR LF</b>

- **Device Long Response** – Echoing command:

Start	Address (optional)	Body	Delimiter
~	<i>device_id@</i>	<b>Command</b> <b>SP</b> [ <i>Param1,Param2,...</i> ] <b>result</b>	<b>CR LF</b>

## Protocol 3000 Commands

This section includes the following commands:

- System Mandatory Commands (see [System Mandatory Commands](#) on page 65).
- System Commands (see [System Commands](#) on page 70).
- Routing Commands (see [Routing Commands](#) on page 76).
- Video Commands (see [Video Commands](#) on page 82).
- Audio Commands (see [Audio Commands](#) on page 86).

# System Mandatory Commands

Command	Description
#	Protocol handshaking
BUILD-DATE	Read device build date
FACTORY	Reset to factory default configuration
HELP	List of commands
MODEL	Read device model
PROT-VER	Read device protocol version
RESET	Reset device
SN	Read device serial number
VERSION	Read device firmware version



Not every command listed by the HELP command is relevant to every matrix configuration.

#

Functions		Permission	Transparency
Set	#	End User	Public
Get	-	-	-
Description		Syntax	
Set	Protocol handshaking	# <code>[CR]</code>	
Get	-	-	
Response			
~nn@SPok <code>[CR LF]</code>			
Parameters			
Response Trigger			
Notes			
Validates the Protocol 3000 connection and gets the machine number			
K-Config Example			
`#",0x0D			

**BUILD-DATE**

Functions		Permission	Transparency
Set	-	-	-
Get	<b>BUILD-DATE?</b>	End User	Public
Description		Syntax	
Set	-	-	
Get	Get device build date	# <b>BUILD-DATE</b> <code>CR</code>	
Response			
~ <code>nn</code> @ <b>BUILD-DATE</b> <code>SP</code> <i>date</i> <code>SP</code> <i>time</i> <code>CR LF</code>			
Parameters			
<i>date</i> – Format: YYYY/MM/DD where YYYY = Year, MM = Month, DD = Day			
<i>time</i> – Format: hh:mm:ss where hh = hours, mm = minutes, ss = seconds			
Response Trigger			
Notes			
K-Config Example			
"#BUILD-DATE?", 0x0D			

**FACTORY**

Functions		Permission	Transparency
Set	<b>FACTORY</b>	End User	Public
Get	-	-	-
Description		Syntax	
Set	Reset device to factory default configuration	# <b>FACTORY</b> <code>CR</code>	
Get	-	-	
Response			
~ <code>nn</code> @ <b>FACTORY</b> <code>SP</code> OK <code>CR LF</code>			
Parameters			
Response Trigger			
Notes			
This command deletes all user data from the device. The deletion can take some time.			
K-Config Example			
"#FACTORY?", 0x0D			

**HELP**

Functions		Permission	Transparency
Set	-	-	-
Get	<b>HELP</b>	End User	Public
Description		Syntax	
Set	-	-	
Get	Get command list or help for specific command	# <b>HELP</b> <input type="checkbox"/>	
Response			
Multi-line: ~ <input type="checkbox"/> <input type="checkbox"/> @Device available protocol 3000 commands: <input type="checkbox"/> <input type="checkbox"/> <input type="checkbox"/> command, <input type="checkbox"/> <input type="checkbox"/> command... <input type="checkbox"/> <input type="checkbox"/>			
Parameters			
Response Trigger			
Notes			
K-Config Example			
`"#HELP",0x0D			

**MODEL**

Functions		Permission	Transparency
Set	-	-	-
Get	<b>MODEL?</b>	End User	Public
Description		Syntax	
Set	-	-	
Get	Get device model	# <b>MODEL?</b> <input type="checkbox"/>	
Response			
~ <input type="checkbox"/> <input type="checkbox"/> @ <b>MODEL?</b> <input type="checkbox"/> <input type="checkbox"/> model_name <input type="checkbox"/> <input type="checkbox"/>			
Parameters			
model_name – String of up to 19 printable ASCII chars			
Response Trigger			
Notes			
K-Config Example			
`"#MODEL?",0x0D			

**PROT-VER**

Functions		Permission	Transparency
Set	-	-	-
Get	<b>PROT-VER?</b>	End User	Public
Description		Syntax	
Set	-	-	
Get	Get device protocol version	# <b>PROT-VER?</b> <input type="checkbox"/> CR	
Response			
~ <input type="checkbox"/> <input type="checkbox"/> @ <b>PROT-VER</b> <input type="checkbox"/> SP3000:version <input type="checkbox"/> CR LF			
Parameters			
Version – XX.XX where X is a decimal digit			
Response Trigger			
Notes			
K-Config Example			
`#PROT-VER?`, 0x0D			

**RESET**

Functions		Permission	Transparency
Set	<b>RESET</b>	Administrator	Public
Get	-	-	-
Description		Syntax	
Set	Reset device	# <b>RESET</b> <input type="checkbox"/> CR	
Get	-	-	
Response			
~ <input type="checkbox"/> <input type="checkbox"/> @ <b>RESET</b> <input type="checkbox"/> SPOK <input type="checkbox"/> CR LF			
Parameters			
Response Trigger			
Notes			
To avoid locking the port due to a USB bug in Windows, disconnect USB connections immediately after running this command. If the port was locked, disconnect and reconnect the cable to reopen the port.			
K-Config Example			
`#RESET`, 0x0D			

**SN**

Functions		Permission	Transparency
Set	-	-	-
Get	<b>SN?</b>	End User	Public
Description		Syntax	
Set	-	-	
Get	Get device serial number	# <b>SN?</b> <code>CR</code>	
Response			
~ <code>nn</code> @ <b>SN</b> <code>SP</code> <i>serial_number</i> <code>CR LF</code>			
Parameters			
<i>serial_number</i> – 11 decimal digits, factory assigned			
Response Trigger			
Notes			
For new products with 14 digit serial numbers, use only the last 11 digits			
K-Config Example			
`#sn?`, 0x0D			

**VERSION**

Functions		Permission	Transparency
Set	-	-	-
Get	<b>VERSION?</b>	End User	Public
Description		Syntax	
Set	-	-	
Get	Get firmware version number	# <b>VERSION?</b> <code>CR</code>	
Response			
~ <code>nn</code> @ <b>VERSION</b> <code>SP</code> <i>firmware_version</i> <code>CR LF</code>			
Parameters			
<i>firmware_version</i> – XX.XX.XXXX where the digit groups are: major.minor.build version			
Response Trigger			
Notes			
K-Config Example			
`#VERSION?`, 0x0D			

## System Commands

Command	Description
CPEDID	Copy EDID data from the output to the input EEPROM
GEDID	Read EDID data
GEDID-EXT	Read EDID data from external device connected to output
HDCP-MOD	Set/Get HDCP mode
HDCP-STAT	Get HDCP signal status
LDEDID	Load EDID data
LOCK-FP	Lock front panel
MODULE-INFO	Get module information
MODULE-TYPE	Set/Get module type, slot location, and status
MODULE-VER	Read module firmware version

### CPEDID

Functions		Permission	Transparency
Set	CPEDID	End User	Public
Get	-	-	-
Description		Syntax	
Set	Copy EDID data from the output to the input EEPROM	#CPEDID[SP]output_id,input_id[CR]	
Get	-	-	
Response			
~nn@CPEDID[SP]output_id,input_id[CR LF]			
Parameters			
<i>output_id</i> – video output ID: 1-64 (varies according to installed output cards, see <a href="#">Port Numbering</a> on page 12) <i>input_id</i> – video input ID: 1-64 (varies according to installed input cards, see <a href="#">Port Numbering</a> on page 12)			
Response Trigger			
Response is sent to the com port from which the Set was received (before execution)			
Notes			
K-Config Example			
Copy the EDID data from output 8 to input 1: "#CPEDID 8,1,0x1",0x0D			



**GEDID**

Functions		Permission	Transparency
Set	<b>GEDID</b>	End User	Public
Get	-	-	-
Description		Syntax	
Set	Read EDID data from device	# <b>GEDID</b> [SP] <i>eprom_id</i> [CR]	
Get	-	-	
Response			
Multi-line response: ~ <b>nn</b> @ <b>GEDID</b> [SP] <i>eprom_id,size</i> [CR LF] <i>Edid_data</i> [CR LF] ~ <b>nn</b> @ <b>GEDID</b> [SP] <i>eprom_id</i> [SP] <b>OK</b> [CR LF]			
Parameters			
<i>eprom_id</i> – Input port EEPROM ID from which to get the EDID: 1-64 (varies according to installed input cards, see <a href="#">Port Numbering</a> on page 12) <i>size</i> - EDID data size sent from the device <i>Edid_data</i> – EDID data, as byte stream			
Response Trigger			
Response is sent to the com port from which the Set (before execution) command was received			
Notes			
K-Config Example			
Read EDID data from a device connected to Input 1: `#GEDID 1",0x0D			

**GEDID-EXT**

Functions		Permission	Transparency
Set	<b>GEDID-EXT</b>	End User	Public
Get	-	-	-
Description		Syntax	
Set	Read EDID data from external device connected to an output	# <b>GEDID</b> [SP] <i>out_id</i> [CR]	
Get	-	-	
Response			
Multi-line response: ~ <b>nn</b> @ <b>GEDID-EXT</b> [SP] <i>out_id,size</i> [CR LF] <i>EDID_data</i> [CR LF] ~ <b>nn</b> @ <b>GEDID-EXT</b> [SP] <i>out_id</i> [SP] <b>OK</b> [CR LF]			
Parameters			
<i>out_id</i> – Output port EEPROM ID from which to get the EDID: 1-64 (varies according to installed output cards, see <a href="#">Port Numbering</a> on page 12) <i>size</i> – EDID data size sent from the device <i>Edid_data</i> – EDID data, as byte stream)			
Response Trigger			
Response is sent to the com port from which the Set (before execution) command was received			
Notes			
K-Config Example			
Read EDID data from a device connected to Output 5: `#GEDID-EXT 5",0x0D			

**HDCP-MOD**

Functions		Permission	Transparency
Set	<b>HDCP-MOD</b>	Administrator	Public
Get	<b>HDCP-MOD?</b>	End User	Public
Description		Syntax	
Set	Set HDCP mode	# <b>HDCP-MOD</b> [SP] <i>inp_id,mode</i> [CR]	
Get	Get HDCP mode	# <b>HDCP-MOD?</b> [SP] <i>inp_id</i> [CR]	
Response			
Set / Get: ~ <i>nn</i> @ <b>HDCP-MOD</b> [SP] <i>inp_id,mode</i> [CR LF]			
Parameters			
<i>inp_id</i> – input number: 1-64 (varies according to installed input cards, see <a href="#">Port Numbering</a> on page 12)			
<i>mode</i> – HDCP mode: 0 (HDCP Off), 1 (HDCP On), 2 (Follow input), 3 (Mirror output – MAC mode)			
Response Trigger			
A response is sent to the com port from which the set (before execution) / get command was received A response is sent to all com ports after command execution if <b>HDCP-MOD</b> was set by any other external control device (device button, device menu or other) or if the HDCP mode changed			
Notes			
Set HDCP working mode on the device input: HDCP not supported - HDCP Off HDCP support changes following detected sink - MIRROR OUTPUT			
K-Config Example			
Disable HDCP mode on input 3: `#HDCP-MOD 3,0",0x0D			

**HDCP-STAT**

Functions		Permission	Transparency
Set	-	-	-
Get	<b>HDCP-STAT?</b>	End User	Public
Description		Syntax	
Set	-	-	
Get	Get HDCP signal status	# <b>HDCP-STAT?</b> [SP] <i>stage,stage_id</i> [CR]	
Response			
~ <i>nn</i> @ <b>HDCP-STAT</b> [SP] <i>stage,stage_id,status</i> [CR LF]			
Parameters			
<i>stage</i> – 0 (input), 1 (output)			
<i>stage_id</i> – input/output number: 1-64 (varies according to installed input/output cards, see <a href="#">Port Numbering</a> on page 12)			
<i>status</i> – signal encryption status: 0 (HDCP Off), 1 (HDCP On), 2 (Follow input), 3 (Mirror output – MAC mode)			
Response Trigger			
Response is sent to the com port from which the Get command was received			
Notes			
Output stage (1) – get the HDCP signal status of the sink device connected to the specified output Input stage (0) – get the HDCP signal status of the source device connected to the specified input			
K-Config Example			
Get the HDCP input signal status of the source device connected to input 9: `#HDCP-STAT? 0,9",0x0D			

**LDEDID**

Functions		Permission	Transparency
Set	<b>LDEDID</b>	End User	Public
Get	-	-	-
Description		Syntax	
Set	Write EDID data from external application to device	Multi-step syntax (see following steps)	
Get	-	-	
Response			
Step 1: <code>#LDEDID[SP]eeprom_ID,size[CR]</code>			
Response 1: <code>~nn@LDEDID[SP]eeprom_id,size[SP]READY[CR LF]</code> or <code>~nn@LDEDID[SP]ERRnn[CR LF]</code>			
Step 2: If <b>READY</b> was received, send <code>[EDID DATA]</code>			
Response 2: <code>~nn@LDEDID[SP]eeprom_id,size[SP]OK[CR LF]</code>			
Parameters			
<i>eeprom_id</i> – Input port EEPROM destination for the EDID data: 1-64 (varies according to installed input cards, see <a href="#">Port Numbering</a> on page 12)			
<i>size</i> – EDID data size			
<code>[EDID DATA]</code> – HEX or KFW file in protocol packets (see <a href="#">Using the Packet Protocol</a> on page 90)			
Response Trigger			
Response is sent to the com port from which the Set (before execution) command was received			
Notes			
When the unit receives the <b>LDEDID</b> command it replies with <b>READY</b> and enters the special EDID packet wait mode. In this mode the unit can receive only packets and not regular protocol commands. If the unit does not receive correct packets for 30 seconds or is interrupted for more than 30 seconds before receiving all packets, it sends timeout error <code>~nn@LDEDID[SP]ERR01[CR LF]</code> and returns to the regular protocol mode. If the unit received data that is not a correct packet, it sends the corresponding error and returns to the regular protocol mode.			
K-Config Example			
Write EDID data from external application to Input 1: `#LDEDID 1,256",0x0D`			

**LOCK-FP**

Functions		Permission	Transparency
Set	<b>LOCK-FP</b>	End User	Public
Get	<b>LOCK-FP?</b>	End User	Public
Description		Syntax	
Set	Lock front panel	<code>#LOCK-FP[SP]lock_mode[CR]</code>	
Get	Get front panel lock state	<code>#LOCK-FP?[CR]</code>	
Response			
Set: <code>~nn@LOCK-FP[SP]lock_mode[SP]OK[CR LF]</code>			
Get: <code>~nn@LOCK-FP[SP]lock_mode[CR LF]</code>			
Parameters			
<i>lock_mode</i> – 0/OFF (unlocks the front panel buttons), 1/ON (locks the front panel buttons)			
Response Trigger			
Notes			
K-Config Example			
Lock the front panel of the <b>VS-6464DN-EM</b> : `#LOCK-FP 1",0x0D`			

**MODULE-INFO**

Functions		Permission	Transparency
Set	-	-	-
Get	<b>MODULE-INFO?</b>	End User	Public
Description		Syntax	
Set	-	-	
Get	Get module information	#MODULE-INFO? <input type="text" value="SP"/> slot_id <input type="text" value="CR"/>	
Response			
~ <input type="text" value="nn"/> @MODULE-INFO <input type="text" value="SP"/> slot_id,m_direction,channel_start,channel_end,m_type,FW_ver,upgradable_f,status <input type="text" value="CR LF"/> ? <input type="text" value="CR LF"/>			
Parameters			
slot_id – Module ID (slot number): 0 (control module), 1-16 (I/O cards), 200 (test module), 201 (keyboard software application), 202 (keyboard hardware)			
m_direction – Transmission direction: 0 (input), 1 (output), 2 (unknown)			
channel_start – Start ID of the port in the device: 1-65			
channel_end – End ID of the port in the device: 1-65			
m_type – Module type: 0 (DVI), 1 (HDCP), 09 (F610), 10 (F670), 12 (DGKat), 18 (VGAA), 47 (control module)			
FW_ver – Module firmware version: XX.XX.XXXX where the digit groups are: major.minor.build version			
upgradable_f – Indicates whether the firmware can be upgraded: 0 (not upgradable), 1 (upgradable)			
status – Module status: 0 (OK), 1 (unknown error), 2 (no communication), 3 (module missing)			
Response Trigger			
Notes			
If m_direction is 2, the channel_start, channel_end and m_type values are irrelevant.			
K-Config Example			
`#MODULE-INFO? 14",0x0D			

**MODULE-TYPE**

Functions		Permission	Transparency
Set	<b>MODULE-TYPE</b>	Admin	Public
Get	<b>MODULE-TYPE?</b>	End User	Public
Description		Syntax	
Set	Set module type and slot location	#MODULE-TYPE <input type="text" value="SP"/> m_id,m_type <input type="text" value="CR"/>	
Get	Get module type and status by slot location	#MODULE-TYPE? <input type="text" value="SP"/> m_id <input type="text" value="CR"/>	
Response			
~ <input type="text" value="nn"/> @MODULE-TYPE <input type="text" value="SP"/> m_id,m_type,status <input type="text" value="CR LF"/>			
Parameters			
m_id – Module ID (slot number): 0 (control module), 1-16 (I/O cards), 200 (test module), 201 (keyboard software application), 202 (keyboard hardware)			
m_type – Module type: 0 (DVI), 1 (HDCP), 09 (F610), 10 (F670), 12 (DGKat), 18 (VGAA), 47 (control module)			
status – Module status: 0 (OK), 1 (unknown error), 2 (no communication), 3 (module missing)			
Response Trigger			
Notes			
K-Config Example			
Set the card (module) installed in slot 4 to VGAA: `#MODULE-TYPE 04,18",0x0D			

**MODULE-VER**

Functions		Permission	Transparency
Set	-	-	-
Get	<b>MODULE-VER?</b>	End User	Public
Description		Syntax	
Set	-	-	
Get	Get module firmware version	#MODULE-VER? SPm_idCR	
Response			
~nn@MODULE-VER SPm_id,FW_versionCR LF			
Parameters			
m_id – Module ID (slot number): 0 (control module), 1-16 (I/O cards), 200 (test module), 201 (keyboard software application), 202 (keyboard hardware)			
FW_version – XX.XX.XXXX where the digit groups are: major.minor.build version			
Response Trigger			
Notes			
K-Config Example			
`#MODULE-VER? 15",0x0D			

## Routing Commands

Command	Description
DISPLAY	Get validity status of output
INFO-IO	Read in/out count
INFO-PRST	Read max preset count
PRST-LST	Read saved presets list
PRST-RCL	Recall saved preset
PRST-STO	Store current connections to preset
PRST-VID	Read video connections from saved preset
SIGNAL	Valid / Invalid input
VID	Switch Video only

### DISPLAY

Functions		Permission	Transparency
Set	-	-	-
Get	<b>DISPLAY?</b>	End User	Public
Description		Syntax	
Set	-	-	
Get	Get validity status of output	# <b>DISPLAY?</b> <code>SP</code> <code>out_id</code> <code>CR</code>	
Response			
~ <code>nn</code> @ <b>DISPLAY</b> <code>SP</code> <code>out_id,validity_flag</code> <code>CR LF</code>			
Parameters			
<i>out_id</i> – output number: 1-64 (varies according to installed output cards, see <a href="#">Port Numbering</a> on page 12)			
<i>validity_flag</i> – validity status of output: 0 (output is invalid – HPD off), 1 (output is valid – HPD on)			
Response Trigger			
A response is sent to the com port from which the Get was received, after command execution and: After every change in output HPD status from on to off (0) After every change in output HPD status from off to on (1)			
Notes			
K-Config Example			
Get the validity status of output 8: `#DISPLAY 8",0x0D`			

**INFO-IO**

Functions		Permission	Transparency
Set	-	-	-
Get	<b>INFO-IO?</b>	End User	Public
Description		Syntax	
Set	-	-	
Get	Get in/out count	# <b>INFO-IO?</b> <code>[CR]</code>	
Response			
~ <code>[nn]</code> @ <b>INFO-IO?</b> <code>[SP]</code> IN <code>[SP]</code> <i>inputs_count</i> ,OUT <code>[SP]</code> <i>outputs_count</i> <code>[CR LF]</code>			
Parameters			
<i>inputs_count</i> – number of inputs in the unit <i>outputs_count</i> – number of outputs in the unit			
Response Trigger			
Notes			
K-Config Example			
"#INFO-IO?", 0x0D			

**INFO-PRST**

Functions		Permission	Transparency
Set	-	-	-
Get	<b>INFO-PRST?</b>	End User	Public
Description		Syntax	
Set	-	-	
Get	Get maximum preset count	# <b>INFO-PRST?</b> <code>[CR]</code>	
Response			
~ <code>[nn]</code> @ <b>INFO-PRST?</b> <code>[SP]</code> VID <code>[SP]</code> <i>preset_video_count</i> ,AUD <code>[SP]</code> <i>preset_audio_count</i> <code>[CR LF]</code>			
Parameters			
<i>preset_video_count</i> – maximum number of video presets in the unit <i>preset_audio_count</i> – maximum number of audio presets in the unit			
Response Trigger			
Notes			
In most units, video and audio presets with the same number are stored and recalled together by commands #PRST-STO and #PRST-RCL			
K-Config Example			
"#INFO-PRST?", 0x0D			

**PRST-LST**

Functions		Permission	Transparency
Set	-	-	-
Get	<b>PRST-LST?</b>	End User	Public
Description		Syntax	
Set	-	-	
Get	Get list of saved presets	# <b>PRST-LST?</b> <code>CR</code>	
Response			
~ <code>nn</code> @ <b>PRST-LST</b> <code>SP</code> preset,preset,... <code>CR LF</code>			
Parameters			
<i>preset</i> - preset number: 1-60			
Response Trigger			
Notes			
In most units, video and audio presets with the same number are stored and recalled together by commands #PRST-STO and #PRST-RCL			
K-Config Example			
`#PRST-LST?`,0x0D			

**PRST-RCL**

Functions		Permission	Transparency
Set	<b>PRST-RCL</b>	End User	Public
Get	-	-	-
Description		Syntax	
Set	Recall (load) a saved preset	# <b>PRST-RCL</b> <code>SP</code> preset <code>CR</code>	
Get	-	-	
Response			
~ <code>nn</code> @ <b>PRST-RCL</b> <code>SP</code> preset <code>CR LF</code>			
Parameters			
<i>preset</i> - preset number: 1-60			
Response Trigger			
Notes			
In most units, video and audio presets with the same number are stored and recalled together by commands #PRST-STO and #PRST-RCL			
K-Config Example			
Recall previously saved connections, volumes, and modes (audio and video routing table) from preset 5: `#PRST-RCL 5`,0x0D			



**PRST-STO**

Functions		Permission	Transparency
Set	<b>PRST-STO</b>	End User	Public
Get	-	-	-
Description		Syntax	
Set	Store current connections, volumes and modes as a preset	# <b>PRST-STO</b> [SP]preset[CR]	
Get	-	-	
Response			
~nn@ <b>PRST-STO</b> [SP]preset[CR LF]			
Parameters			
<i>preset</i> – preset number: 1-60			
Response Trigger			
Notes			
In most units, video and audio presets with the same number are stored and recalled together by commands # <b>PRST-STO</b> and # <b>PRST-RCL</b>			
K-Config Example			
Store the current connections, volumes, and modes (audio and video routing table) to preset 8: `# <b>PRST-STO</b> 8",0x0D			

**PRST-VID**

Functions		Permission	Transparency
Set	-	-	-
Get	<b>PRST-VID?</b>	End User	Public
Description		Syntax	
Set	-	-	
Get	Get video connections from saved preset	# <b>PRST-VID?</b> [SP]preset,out[CR] # <b>PRST-VID?</b> [SP]preset,*[CR]	
Response			
~nn@ <b>PRST-VID</b> [SP]preset,in>out[CR LF] or ~nn@ <b>PRST-VID</b> [SP]preset,in>1,in>2,in>3,...[CR LF]			
Parameters			
<i>preset</i> - preset number: 1-60 <i>in</i> – input number: 0 (if output disconnected), 1-64 (varies according to installed input cards, see <a href="#">Port Numbering</a> on page 12) > – connection character between in and out parameters <i>out</i> – output number: 1-64 (varies according to installed output cards, see <a href="#">Port Numbering</a> on page 12), * (all outputs)			
Response Trigger			
Notes			
In most units, video and audio presets with the same number are stored and recalled together by commands # <b>PRST-STO</b> and # <b>PRST-RCL</b>			
K-Config Example			
Get the source of video output 2 from preset 3: `# <b>PRST-VID?</b> 3,2",0x0D			

**SIGNAL**

Functions		Permission	Transparency
Set	-	-	-
Get	<b>SIGNAL?</b>	End User	Public
Description		Syntax	
Set	-	-	
Get	Get input signal validity status	# <b>SIGNAL?</b> <code>[SP]</code> <i>inp_id</i> <code>[CR]</code>	
Response			
~ <code>[nn]</code> @ <b>SIGNAL</b> <code>[SP]</code> <i>inp_id,validity_flag</i> <code>[CR LF]</code>			
Parameters			
<i>inp_id</i> – input number: 1-64 (varies according to installed input cards, see <a href="#">Port Numbering</a> on page 12)			
<i>validity_flag</i> – validity status according to signal validation: 0 (input is invalid), 1 (input is valid)			
Response Trigger			
After execution, a response is sent to the com port from which the Get was received Response is sent after every change in input signal status valid to invalid, or invalid to valid			
Notes			
K-Config Example			
Get the input signal lock status of input 2: `#SIGNAL? 2",0x0D`			

## VID

Functions		Permission	Transparency
Set	VID	End User	Public
Get	VID?	End User	Public
Description		Syntax	
Set	Set video switch state	#VID[SP]in>out,in>out,...[CR]	
Get	Get video switch state	#VID?[SP]out[CR] #VID?[SP]*[CR]	
Response			
Set: ~nn@VID[SP]in>out[CR LF] ~nn@VID[SP]in>out[CR LF] ... Get: ~nn@VID[SP]in>out[CR LF] ~nn@VID[SP]in>1,in>2,...[CR LF]			
Parameters			
<i>in</i> – input number: 0 (if output disconnected), 1–64 (varies according to installed input cards, see <a href="#">Port Numbering</a> on page 12) > – connection character between in and out parameters <i>out</i> – output number: 1–64 (varies according to installed output cards, see <a href="#">Port Numbering</a> on page 12), * (all outputs)			
Response Trigger			
Notes			
When AFV switching mode is active, this command also switches audio and the unit replies with command ~AV.			
Examples			
Switch video input 2 to output 4	#V 2>4[CR]	~01@VID 2>4[CRLF]	
Switch video input 4 to output 2 in machine 6	#6@VID 4>2[CR]	~06@VID 4>2[CRLF]	
Switch video input 3 to all outputs	#V 3>*[CR]	~01@VID 3>*[CRLF]	
Chaining multiple commands	#AV 1>*   V 3>4,2>2,2>1,0>2   V 3>9   A 0>1   V? *[CR] 1. Switch audio and video from input 1 to all outputs 2. Switch video input 3 to output 4, video input 2 to output 2, video input 2 to output 1 and disconnect video output 2 3. Switch video input 3 to output 9 (non-existent) 4. Disconnect audio output 1 5. Get status of all video links Command processing begins after entering [CR] A response is sent for each command after processing	~AV 1>*[CRLF] ~VID 3>4 [CRLF] ~VID 2>2 [CRLF] ~VID 2>1 [CRLF] ~VID 0>2 [CRLF] ~VID ERR003 [CRLF] ~AUD 0>1[CRLF] ~VID 2>1,0>2,1>3,3>4[CRLF]	
K-Config Example			
Set the video switch state from input 4 to output 2: `#VID 4>2`, 0x0D			

## Video Commands

Command	Description
BRIGHTNESS	Set/get brightness value
CONTRAST	Set/get contrast value
DETAIL-TIMING	Set/get detailed timing parameters
H-PHASE	Set/get H-Phase value

### BRIGHTNESS

Functions		Permission	Transparency
Set	<b>BRIGHTNESS</b>	End User	Public
Get	<b>BRIGHTNESS?</b>	End User	Public
Description		Syntax	
Set	Set brightness value	# <b>BRIGHTNESS</b> [SP]stage, channel, value[CR]	
Get	Get brightness value	# <b>BRIGHTNESS?</b> [SP]stage, channel[CR]	
Response			
~nn@ <b>BRIGHTNESS</b> [SP]stage, channel, value[CR LF]			
Parameters			
stage – 1/IN (input), 2/OUT (output)			
channel – input or output number: 1-64 (varies according to installed input / output cards, see <a href="#">Port Numbering</a> on page 12)			
value – brightness in Kramer units: 0-63, ++ (increase current value), -- (decrease current value)			
Response Trigger			
Notes			
A minus sign precedes negative values			
This command is only valid for VGA cards			
K-Config Example			
Set the brightness value of output 8 to 60: `#BRIGHTNESS 2, 8, 60", 0x0D`			
Increase the brightness value of input 5 by 1 unit: `#BRIGHTNESS 1, 5, ++", 0x0D`			

**CONTRAST**

Functions		Permission	Transparency
Set	<b>CONTRAST</b>	End User	Public
Get	<b>CONTRAST?</b>	End User	Public
Description		Syntax	
Set	Set contrast value	# <b>CONTRAST</b> [SP]stage,channel,value[CR]	
Get	Get contrast value	# <b>CONTRAST?</b> [SP]stage,channel[CR]	
Response			
~nn@ <b>CONTRAST</b> [SP]stage,channel,value[CR LF]			
Parameters			
stage – 1/IN (input), 2/OUT (output)			
channel – input or output number: 1-64 (varies according to installed input / output cards, see <a href="#">Port Numbering</a> on page 12)			
value – contrast in Kramer units: 0-63, ++ (increase current value), -- (decrease current value)			
Response Trigger			
Notes			
A minus sign precedes negative values			
This command is only valid for VGA cards			
K-Config Example			
Set the contrast value of output 8 to 60: `#CONTRAST 2,8,60`,0x0D			
Increase the contrast value of input 5 by 1 unit: `#CONTRAST 1,5,++`,0x0D			

**DETAIL-TIMING**

Functions		Permission	Transparency
Set	<b>DETAIL-TIMING</b>	End User	Public
Get	<b>DETAIL-TIMING?</b>	End User	Public
Description		Syntax	
Set	Set detailed timing parameters	# <b>DETAIL-TIMING</b> [SP]param,channel,value[CR]	
Get	Get detailed timing parameters	# <b>DETAIL-TIMING?</b> [SP]param,channel[CR]	
Response			
~nn@ <b>DETAIL-TIMING</b> [SP]param,channel,value[CR LF]			
Parameters			
<p>param – 1 (H-De-Start – horizontal start position of port video), 2 (H-De-Total – horizontal active pixels of port video), 3 (H-Total – total horizontal pixels of port video), 4 (V-De-Start – vertical start position of port video), 5 (V-De-Total – vertical active lines of port video), 6 (Auto-DE-Adjust – resolution detection mode), 7 (Auto-PHASE-Adjust – phase mode)</p> <p>channel – input number: 1-64 (varies according to installed input cards, see <a href="#">Port Numbering</a> on page 12)</p> <p>value – video parameter value in Kramer units:</p> <ul style="list-style-type: none"> <li>for all param values: ++ (increase current value), -- (decrease current value)</li> <li>for 1 (H-De-Start): 1-600</li> <li>for 2 (H-De-Total): 1-4000</li> <li>for 3 (H-Total): 1-7000</li> <li>for 4 (V-De-Start): 1-255</li> <li>for 5 (V-De-Total): 1-3000</li> <li>for 6 (Auto-DE-Adjust): 0 (auto), 1 (user defined), 2 (auto adjust)</li> <li>for 7 (Auto-PHASE-Adjust): 0 (auto), 1 (user defined), 2 (auto adjust)</li> </ul>			
Response Trigger			
Notes			
<p>A minus sign precedes negative values.</p> <p>The auto adjust feature (in the Auto-DE-Adjust and Auto-PHASE-Adjust parameters) requires the device to recalculate the parameters based on the currently connected source. The result may be different from the standard parameters for the currently set resolution. The result is saved in non-volatile memory and is recalled when the same source is used again. In order to revert to auto pre-defined parameters, either reset to factory setting with the relevant source connected or connect a different source.</p>			
K-Config Example			
<p>Set the total horizontal pixels (H-Total parameter) of input 4 to 6000:</p> <pre>"#DETAIL-TIMING 3,4,6000",0x0D</pre> <p>Set the resolution detection mode (Auto-DE-Adjust parameter) of input 4 to auto adjust:</p> <pre>"#DETAIL-TIMING 6,4,2",0x0D</pre>			

**H-PHASE**

Functions		Permission	Transparency
Set	<b>H-PHASE</b>	End User	Public
Get	<b>H-PHASE?</b>	End User	Public
Description		Syntax	
Set	Set H-Phase value	# <b>H-PHASE</b> [SP]stage, channel, value[CR]	
Get	Get H-Phase value	# <b>H-PHASE?</b> [SP]stage, channel[CR]	
Response			
~nn@ <b>H-PHASE</b> [SP]stage, channel, value[CR LF]			
Parameters			
stage – 1/IN (input), 2/OUT (output)			
channel – input or output number: 1-64 (varies according to installed input / output cards, see <a href="#">Port Numbering</a> on page 12)			
value – H-Phase value in Kramer units: 0-63, ++ (increase current value), -- (decrease current value)			
Response Trigger			
Notes			
A minus sign precedes negative values			
This command is only valid for VGA cards			
K-Config Example			
Set the H-Phase value of output 8 to 60: `#H-PHASE 2, 8, 60`, 0x0D			
Increase the H-Phase value of input 5 by 1 unit: `#H-PHASE 1, 5, ++`, 0x0D			

## Audio Commands

Command	Description
AUD-LVL	Set/get audio level in specific amplifier stage
BALANCE	Set/get balance level
BASS	Set/get audio bass level
MIX	Set/get audio mix setting (stereo / mono)
MUTE	Set/get audio mute setting
TREBLE	Set/get audio treble level
VOLUME	Set/get simple audio volume

### AUD-LVL

Functions		Permission	Transparency
Set	AUD-LVL	End User	Public
Get	AUD-LVL?	End User	Public
Description		Syntax	
Set	Set audio level in specific amplifier stage	#AUD-LVL[SP]stage, channel, volume[CR]	
Get	Get audio level in specific amplifier stage	#AUD-LVL?[SP]stage, channel[CR]	
Response			
~nn@AUD-LVL[SP]stage, channel, volume[CR LF]			
Parameters			
stage – 0/IN (input), 1/OUT (output)			
channel – input or output number: 1–64 (varies according to installed input / output cards, see <a href="#">Port Numbering</a> on page 12)			
volume – audio level in Kramer units: 0–70, ++ (increase current value), -- (decrease current value)			
Response Trigger			
Notes			
The VOLUME command can also be used to set simple output audio volume. A minus sign precedes negative values.			
K-Config Example			
Set the audio level of output 8 to 30: `#AUD-LVL 2, 8, 30`, 0x0D			
Increase the audio level of input 3 by 1 unit: `#AUD-LVL 1, 3, ++`, 0x0D			



**BALANCE**

Functions		Permission	Transparency
Set	<b>BALANCE</b>	End User	Public
Get	<b>BALANCE?</b>	End User	Public
Description		Syntax	
Set	Set the balance level	# <b>BALANCE</b> [SP]out_channel,balance_level[CR]	
Get	Get the current balance level	# <b>BALANCE?</b> [SP]out_channel[CR]	
Response			
~nn@ <b>BALANCE</b> [SP]out_channel,balance_level[CR LF]			
Parameters			
out_channel – output number: 1-64 (varies according to installed output cards, see <a href="#">Port Numbering</a> on page 12)			
balance_level – balance level in Kramer units: 0-100, ++ (increase current value), -- (decrease current value)			
Response Trigger			
Notes			
A minus sign precedes negative values			
K-Config Example			
Set the balance level of output 5 to 50: `#BALANCE 5,50",0x0D			
Increase the balance level of output 5 by 1 unit: `#BALANCE 5,++",0x0D			

**BASS**

Functions		Permission	Transparency
Set	<b>BASS</b>	End User	Public
Get	<b>BASS?</b>	End User	Public
Description		Syntax	
Set	Set the audio bass level	# <b>BASS</b> [SP]channel,bass_level[CR]	
Get	Get the current audio bass level	# <b>BASS?</b> [SP]channel[CR]	
Response			
~nn@ <b>BASS</b> [SP]channel,bass_level[CR LF]			
Parameters			
channel – output number: 1-64 (varies according to installed output cards, see <a href="#">Port Numbering</a> on page 12)			
bass_level – bass level in Kramer units: 0-15, ++ (increase current value), -- (decrease current value)			
Response Trigger			
Notes			
A minus sign precedes negative values			
K-Config Example			
Set the bass level of output 10 to 4: `#BASS 10,4",0x0D			
Decrease the bass level of output 5 by 1 unit: `#BASS 5,--",0x0D			

**MIX**

Functions		Permission	Transparency
Set	<b>MIX</b>	End User	Public
Get	<b>MIX?</b>	End User	Public
Description		Syntax	
Set	Set audio mix (stereo/mono)	# <b>MIX</b> [SP]channel,mix_mode[CR]	
Get	Get audio mix setting (stereo/mono)	# <b>MIX?</b> [SP]channel[CR]	
Response			
~nn@ <b>MIX</b> [SP]channel,mix_mode[CR LF]			
Parameters			
channel – output number: 1-64 (varies according to installed output cards, see <a href="#">Port Numbering</a> on page 12)			
mix_mode – mix mode setting: 0/OFF (analog audio output is stereo), 1/ON (analog audio output is mono)			
Response Trigger			
Notes			
Mix mode is an analog audio parameter used to set mono or stereo output			
K-Config Example			
Set the mix mode of output 3 to off (stereo output): `#MIX 3,0",0x0D			

**MUTE**

Functions		Permission	Transparency
Set	<b>MUTE</b>	End User	Public
Get	<b>MUTE?</b>	End User	Public
Description		Syntax	
Set	Mute the audio output	# <b>MUTE</b> [SP]channel,mute_mode[CR]	
Get	Get audio mute setting	# <b>MUTE?</b> [SP]channel[CR]	
Response			
~nn@ <b>MUTE</b> [SP]channel,mute_mode[CR LF]			
Parameters			
channel – output number: 1-64 (varies according to installed output cards, see <a href="#">Port Numbering</a> on page 12)			
mute_mode – audio mute setting: 0/OFF (audio is enabled), 1/ON (audio is muted)			
Response Trigger			
Notes			
K-Config Example			
Mute the audio of output 8: `#MUTE 8,1",0x0D			

## TREBLE

Functions		Permission	Transparency
Set	<b>TREBLE</b>	End User	Public
Get	<b>TREBLE?</b>	End User	Public
Description		Syntax	
Set	Set the audio treble value	# <b>TREBLE</b> [SP]channel,treble_level[CR]	
Get	Get the audio treble value	# <b>TREBLE?</b> [SP]channel[CR]	
Response			
~nn@ <b>TREBLE</b> [SP]channel,treble_level[CR LF]			
Parameters			
channel – output number: 1-64 (varies according to installed output cards, see <a href="#">Port Numbering</a> on page 12)			
treble_level – treble level in Kramer units: 0-15, ++ (increase current value), -- (decrease current value)			
Response Trigger			
Notes			
A minus sign precedes negative values			
K-Config Example			
Set the audio treble level of output 8 to 7: `#TREBLE 8,7",0x0D			
Decrease the treble level of output 5 by 1 unit: `#TREBLE 5,--,0x0D			

## VOLUME

Functions		Permission	Transparency
Set	<b>VOLUME</b>	End User	Public
Get	<b>VOLUME?</b>	End User	Public
Description		Syntax	
Set	Set simple audio volume	# <b>VOLUME</b> [SP]out_channel,volume[CR]	
Get	Get simple audio volume	# <b>VOLUME?</b> [SP]out_channel[CR]	
Response			
~nn@ <b>VOLUME</b> [SP]out_channel,volume[CR LF]			
Parameters			
out_channel – output number: 1-64 (varies according to installed output cards, see <a href="#">Port Numbering</a> on page 12)			
volume – volume in Kramer units: 0-70, ++ (increase current value), -- (decrease current value)			
Response Trigger			
Notes			
A minus sign precedes negative values			
Use the AUD-LVL command to set / get the input audio level or the audio level in the amplifier stage.			
K-Config Example			
Set the volume of output 8 to 25: `#VOLUME 8,25",0x0D			
Increase the volume of output 5 by 1 unit: `#VOLUME 5,++,0x0D			

## Using the Packet Protocol

The packet protocol is designed to transfer large amounts of data, such as files, IR commands, EDID data, etc.

### To use the packet protocol:

1. Send a command, for example `LDEID`
2. Receive `READY` or `ERR###`
3. If `READY`:
  - Send a packet
  - Receive `OK` on the last packet
  - Receive `OK` for the command
4. Packet structure:
  - Packet ID (1, 2, 3...) (2 bytes in length)
  - Length (data length + 2 for CRC) - (2 bytes in length)
  - Data (data length -2 bytes)
  - CRC - 2 bytes

01	02	03	04	05..	
Packet ID	Length	Data	CRC		

5. Response:

`~NNNN SP OK CR LF`

Where `NNNN` is the received packet ID in ASCII hex digits.



When calculating the CRC, the polynomial for the 16-bit CRC is:

CRC-CCITT:  $0x1021 = x^{16} + x^{12} + x^5 + 1$

Initial value: 0000

Final XOR Value: 0

For a code example, see: [http://sanity-free.org/133/crc\\_16\\_ccitt\\_in\\_csharp.html](http://sanity-free.org/133/crc_16_ccitt_in_csharp.html)

CRC example:

Data = "123456789"

Result => 0x31C3

The warranty obligations of Kramer Electronics Inc. ("Kramer Electronics") for this product are limited to the terms set forth below:

#### **What is Covered**

This limited warranty covers defects in materials and workmanship in this product.

#### **What is Not Covered**

This limited warranty does not cover any damage, deterioration or malfunction resulting from any alteration, modification, improper or unreasonable use or maintenance, misuse, abuse, accident, neglect, exposure to excess moisture, fire, improper packing and shipping (such claims must be presented to the carrier), lightning, power surges, or other acts of nature. This limited warranty does not cover any damage, deterioration or malfunction resulting from the installation or removal of this product from any installation, any unauthorized tampering with this product, any repairs attempted by anyone unauthorized by Kramer Electronics to make such repairs, or any other cause which does not relate directly to a defect in materials and/or workmanship of this product. This limited warranty does not cover cartons, equipment enclosures, cables or accessories used in conjunction with this product.

Without limiting any other exclusion herein, Kramer Electronics does not warrant that the product covered hereby, including, without limitation, the technology and/or integrated circuit(s) included in the product, will not become obsolete or that such items are or will remain compatible with any other product or technology with which the product may be used.

#### **How Long this Coverage Lasts**

The standard limited warranty for Kramer products is seven (7) years from the date of original purchase, with the following exceptions:

1. All Kramer VIA hardware products are covered by a standard three (3) year warranty for the VIA hardware and a standard three (3) year warranty for firmware and software updates; all Kramer VIA accessories, adapters, tags, and dongles are covered by a standard one (1) year warranty.
2. Kramer fiber optic cables, adapter-size fiber optic extenders, pluggable optical modules, active cables, cable retractors, ring mounted adapters, portable power chargers, Kramer speakers, and Kramer touch panels are all covered by a standard one (1) year warranty.
3. All Kramer Cobra products, all Kramer Calibre products, all Kramer Minicom digital signage products, all HighSecLabs products, all streaming, and all wireless products are covered by a standard three (3) year warranty.
4. All Sierra Video MultiViewers are covered by a standard five (5) year warranty.
5. Sierra switchers & control panels are covered by a standard seven (7) year warranty (excluding power supplies and fans that are covered for three (3) years).
6. K-Touch software is covered by a standard one (1) year warranty for software updates.
7. All Kramer passive cables are covered by a ten (10) year warranty.

#### **Who is Covered**

Only the original purchaser of this product is covered under this limited warranty. This limited warranty is not transferable to subsequent purchasers or owners of this product.

#### **What Kramer Electronics Will Do**

Kramer Electronics will, at its sole option, provide one of the following three remedies to whatever extent it shall deem necessary to satisfy a proper claim under this limited warranty:

1. Elect to repair or facilitate the repair of any defective parts within a reasonable period of time, free of any charge for the necessary parts and labor to complete the repair and restore this product to its proper operating condition. Kramer Electronics will also pay the shipping costs necessary to return this product once the repair is complete.
2. Replace this product with a direct replacement or with a similar product deemed by Kramer Electronics to perform substantially the same function as the original product. If a direct or similar replacement product is supplied, the original product's end warranty date remains unchanged and is transferred to the replacement product.
3. Issue a refund of the original purchase price less depreciation to be determined based on the age of the product at the time remedy is sought under this limited warranty.

#### **What Kramer Electronics Will Not Do Under This Limited Warranty**

If this product is returned to Kramer Electronics or the authorized dealer from which it was purchased or any other party authorized to repair Kramer Electronics products, this product must be insured during shipment, with the insurance and shipping charges prepaid by you. If this product is returned uninsured, you assume all risks of loss or damage during shipment. Kramer Electronics will not be responsible for any costs related to the removal or re-installation of this product from or into any installation. Kramer Electronics will not be responsible for any costs related to any setting up this product, any adjustment of user controls or any programming required for a specific installation of this product.

#### **How to Obtain a Remedy Under This Limited Warranty**

To obtain a remedy under this limited warranty, you must contact either the authorized Kramer Electronics reseller from whom you purchased this product or the Kramer Electronics office nearest you. For a list of authorized Kramer Electronics resellers and/or Kramer Electronics authorized service providers, visit our web site at [www.kramerav.com](http://www.kramerav.com) or contact the Kramer Electronics office nearest you.

In order to pursue any remedy under this limited warranty, you must possess an original, dated receipt as proof of purchase from an authorized Kramer Electronics reseller. If this product is returned under this limited warranty, a return authorization number, obtained from Kramer Electronics, will be required (RMA number).

You may also be directed to an authorized reseller or a person authorized by Kramer Electronics to repair the product.

If it is decided that this product should be returned directly to Kramer Electronics, this product should be properly packed, preferably in the original carton, for shipping. Cartons not bearing a return authorization number will be refused.

#### **Limitation of Liability**

THE MAXIMUM LIABILITY OF KRAMER ELECTRONICS UNDER THIS LIMITED WARRANTY SHALL NOT EXCEED THE ACTUAL PURCHASE PRICE PAID FOR THE PRODUCT. TO THE MAXIMUM EXTENT PERMITTED BY LAW, KRAMER ELECTRONICS IS NOT RESPONSIBLE FOR DIRECT, SPECIAL, INCIDENTAL OR CONSEQUENTIAL DAMAGES RESULTING FROM ANY BREACH OF WARRANTY OR CONDITION, OR UNDER ANY OTHER LEGAL THEORY. Some countries, districts or states do not allow the exclusion or limitation of relief, special, incidental, consequential or indirect damages, or the limitation of liability to specified amounts, so the above limitations or exclusions may not apply to you.

#### **Exclusive Remedy**

TO THE MAXIMUM EXTENT PERMITTED BY LAW, THIS LIMITED WARRANTY AND THE REMEDIES SET FORTH ABOVE ARE EXCLUSIVE AND IN LIEU OF ALL OTHER WARRANTIES, REMEDIES AND CONDITIONS, WHETHER ORAL OR WRITTEN, EXPRESS OR IMPLIED. TO THE MAXIMUM EXTENT PERMITTED BY LAW, KRAMER ELECTRONICS SPECIFICALLY DISCLAIMS ANY AND ALL IMPLIED WARRANTIES, INCLUDING, WITHOUT LIMITATION, WARRANTIES OF MERCHANTABILITY AND FITNESS FOR A PARTICULAR PURPOSE. IF KRAMER ELECTRONICS CANNOT LAWFULLY DISCLAIM OR EXCLUDE IMPLIED WARRANTIES UNDER APPLICABLE LAW, THEN ALL IMPLIED WARRANTIES COVERING THIS PRODUCT, INCLUDING WARRANTIES OF MERCHANTABILITY AND FITNESS FOR A PARTICULAR PURPOSE, SHALL APPLY TO THIS PRODUCT AS PROVIDED UNDER APPLICABLE LAW. IF ANY PRODUCT TO WHICH THIS LIMITED WARRANTY APPLIES IS A "CONSUMER PRODUCT" UNDER THE MAGNUSON-MOSS WARRANTY ACT (15 U.S.C.A. §2301, ET SEQ.) OR OTHER APPLICABLE LAW, THE FOREGOING DISCLAIMER OF IMPLIED WARRANTIES SHALL NOT APPLY TO YOU, AND ALL IMPLIED WARRANTIES ON THIS PRODUCT, INCLUDING WARRANTIES OF MERCHANTABILITY AND FITNESS FOR THE PARTICULAR PURPOSE, SHALL APPLY AS PROVIDED UNDER APPLICABLE LAW.

#### **Other Conditions**

This limited warranty gives you specific legal rights, and you may have other rights which vary from country to country or state to state.

This limited warranty is void if (i) the label bearing the serial number of this product has been removed or defaced, (ii) the product is not distributed by Kramer Electronics or (iii) this product is not purchased from an authorized Kramer Electronics reseller. If you are unsure whether a reseller is an authorized Kramer Electronics reseller, visit our web site at [www.kramerav.com](http://www.kramerav.com) or contact a Kramer Electronics office from the list at the end of this document.

Your rights under this limited warranty are not diminished if you do not complete and return the product registration form or complete and submit the online product registration form. Kramer Electronics thanks you for purchasing a Kramer Electronics product. We hope it will give you years of satisfaction.



P/N: 2900-300902



Rev: 5



## SAFETY WARNING

Disconnect the unit from the power supply before opening and servicing

For the latest information on our products and a list of Kramer distributors, visit our Web site where updates to this user manual may be found.

We welcome your questions, comments, and feedback.

The terms HDMI, HDMI High-Definition Multimedia Interface, and the HDMI Logo are trademarks or registered trademarks of HDMI Licensing Administrator, Inc. All brand names, product names, and trademarks are the property of their respective owners.